

# *Mini Close Reading Unit*

## **A Reindeer Freebie!**

### **All About Antlers**



**Differentiated**  
**Informational**  
**Texts & More!**

*By: Sunny and Bright in First Grade*

Please note: This freebie contains portions of 2 larger close reading unit based on reindeer. Pages 3, 4, and 5 present the same article written on 3 different levels of text complexity. These pages along with page 9 are included in my:

[Reindeer Close Reading Unit- Differentiated Texts & Vocabulary](#) which is recommended for grades 1-3.

Pages 6, 7, and 8 contain the same information in a different format. These pages are included in a separate product: [Reindeer Close Reading Unit- Kindergarten and First Grade](#). This product is recommended for grades K-1 as a close reading unit and for pre-k as a shared reading experience. Please consider previewing these products to extend the learning of your students!

**Thank you for your download! I hope you and your students will enjoy learning about reindeer through this nonfiction articles!**

There are 4 versions of this article that are included in this freebie. I hope this will help you to differentiate your instruction and maximize the learning of your students.

-You may have students read the articles independently using the article that best matches their individual reading level.

-You may use the articles for small group instruction

-You may choose to use an article written at a higher level for a Shared Reading experience or Shared Close Read. This is an excellent way to introduce rigorous texts to beginning readers.

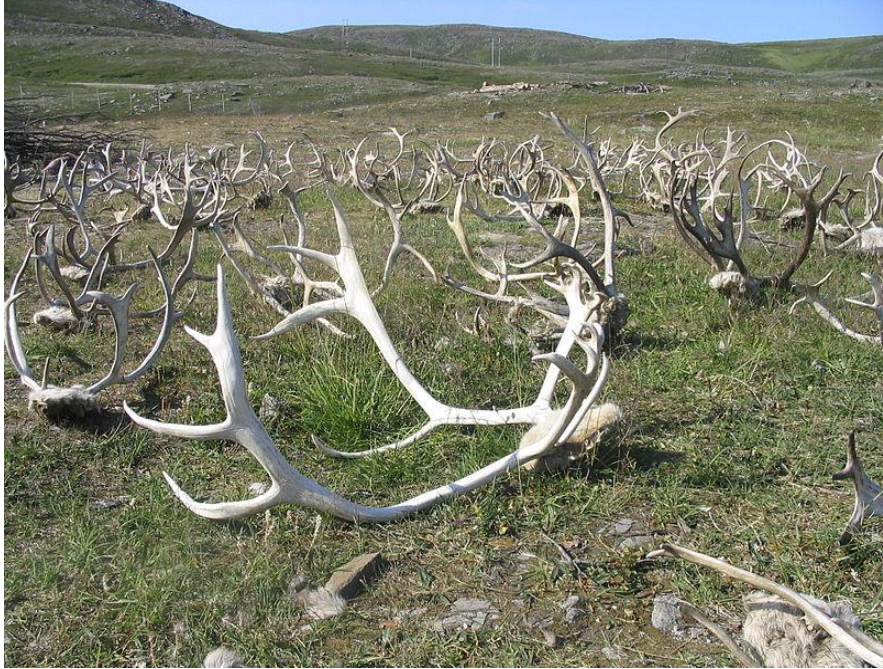
There are text based/close read questions that correspond with the article. They can be used for conversation circles or written responses.



# All About Antlers

Did you know that all reindeer have antlers? This includes males, females, and even reindeer **calves**!

Reindeer shed their antlers each year. Male reindeer lose their antlers every winter. However, female reindeer keep their antlers a little longer. They do not lose their antlers until the spring after they have given birth to their babies. Keeping their antlers a bit longer helps the mother-to-be compete for food and stay safe while she is pregnant.



Reindeer are the only animals that grow new antlers **annually**. Antlers grow very fast and are warm while they are growing.

Just like the fingerprints of humans, the antlers of reindeer are all different. The differences in size and shape of each set of antlers makes it completely unique!



# All About Antlers

Did you know that all reindeer have antlers?  
This includes males, females, and even  
reindeer calves!

Reindeer lose their antlers each year. Male reindeer lose their antlers every winter. Female reindeer do not lose their antlers until the spring. They keep them longer to help them get food and stay safe while they are pregnant.



The antlers of reindeer are all different sizes and shapes. No two are the same.



# All About Antlers

All reindeer have antlers! Males, females, and calves have antlers.

Reindeer shed their antlers each year. Males shed their antlers in the winter. Females shed their antlers in the spring. This helps the females get food and stay safe until after they have a baby.



No two sets of antlers are the same. They are all different.

# What types of reindeer have antlers?



Did you know that all reindeer have antlers? It's true! Males, females, and even baby calves have antlers. Reindeer shed their antlers every year. Then they grow a new set!

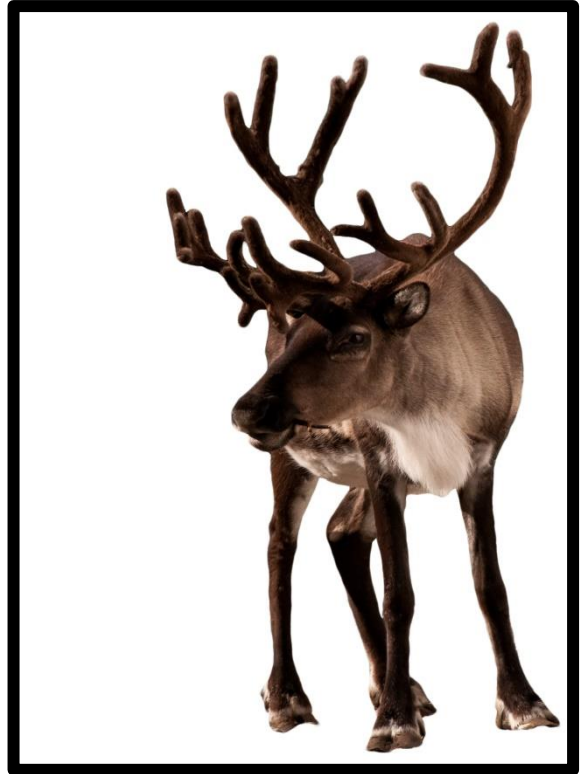


# When do reindeer shed their antlers?



Reindeer shed their antlers every year. Males shed their antlers in the winter. Females keep their antlers a little longer. They shed them in the spring after they have babies.

# What makes reindeer antlers unique?




Each set of reindeer antlers is unique. There are no 2 sets that are the same. Each set is a different size and shape. A reindeer's antlers are unique like a person's fingerprints.



# All About Antlers

## Text Dependent Questions Writing Prompts

- What types of reindeer have antlers?
- How often do reindeer shed their antlers?
- Why is it important for female reindeer to keep their antlers until late spring?
- Name 3 facts you learned about antlers from the text.
- Why are reindeer antlers considered unique?
- Explain what you observed in the photographs. Why do you think these photographs were chosen for this article?
- What is the most interesting fact you learned about reindeer antlers? Cite evidence from the text to support your answer.



Please consider  
following my store for  
more differentiated  
nonfiction units and lots  
of freebies!

Fonts and Graphics by:  
Livin Lit  
Scrappin Doodles  
3am Teacher  
KG Fonts  
+ Hello Literacy

Photographs for this  
product were purchased  
from Shutterstock.com