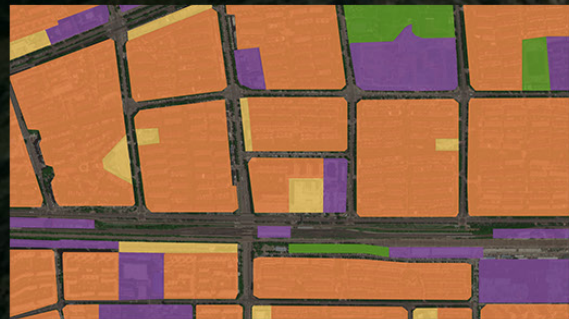


# SETTLEMENT FOR THE YOUTH

Ruochen Ji

## 1 YOUTH IN BEIJING: ERASURE OF SETTLEMENT & TIME

Here in Beijing, young generations are spending 2 hours on average for the daily commute, which affects them negatively in health, psychological and economic ways. They are living in "dormitory cities" in the peripheral areas because urban development over the years has pushed the cost of living in the metropolitan areas to the level that most young generations cannot afford.



Program Distribution in Dormitory Cities



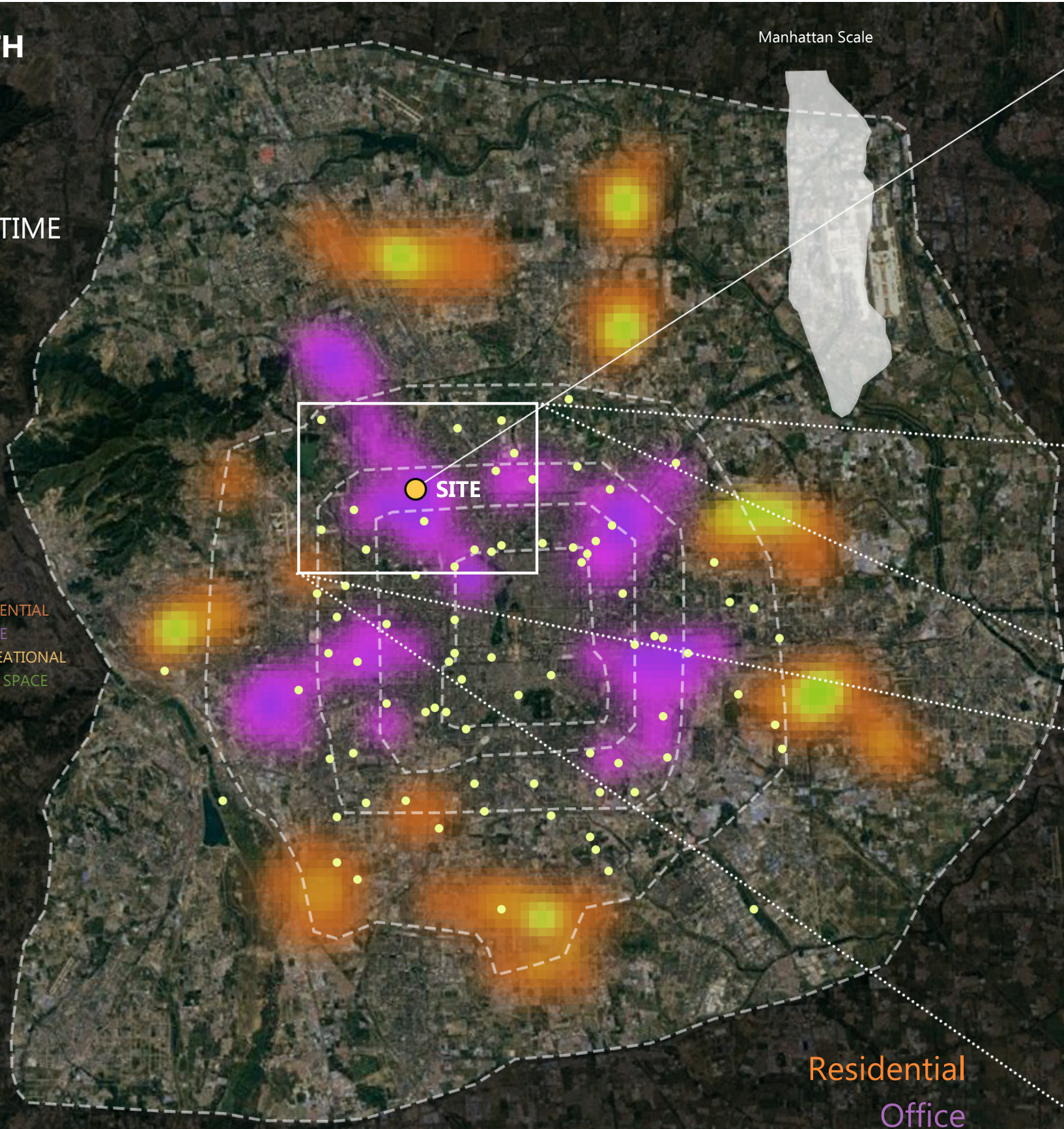
Program Distribution in Central Areas



Typical Timeline

The exhaustion and mental pressure caused by commuting discourages them to seek for other recreational activities.

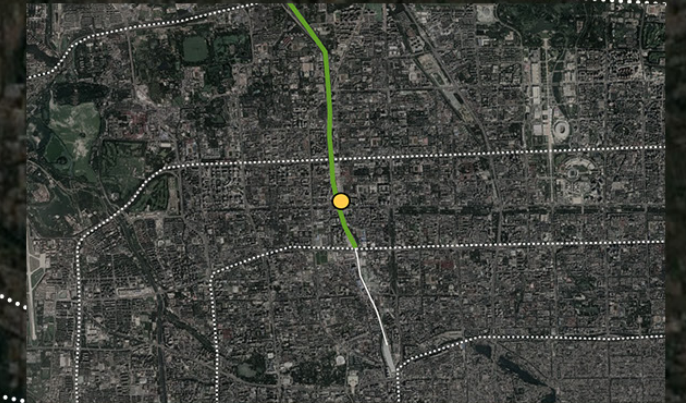
Manhattan Scale



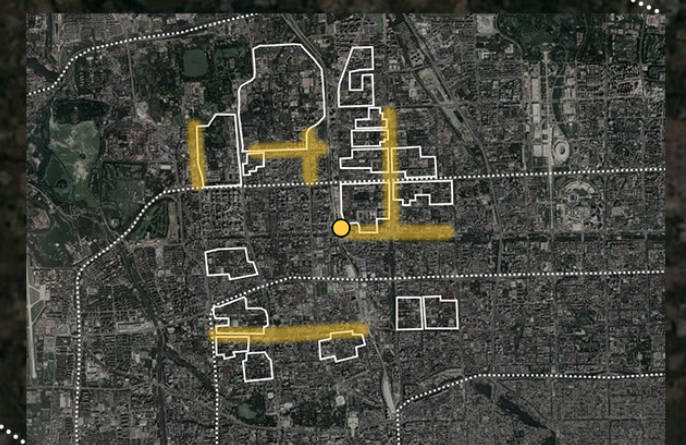
## 2 BUS DEPOT: INFRASTRUCTURE TO RECLAIM

Bus depots have the potentials to be reclaimed and designed to provide settlements for these young generations, while keeping bus depots' original functionality in higher densities.

## 3 SITE SELECTION: ERASURE, LIFESTYLE & GREEN



Next to the site, a city-level green belt is being built on top of dismantled railway site.

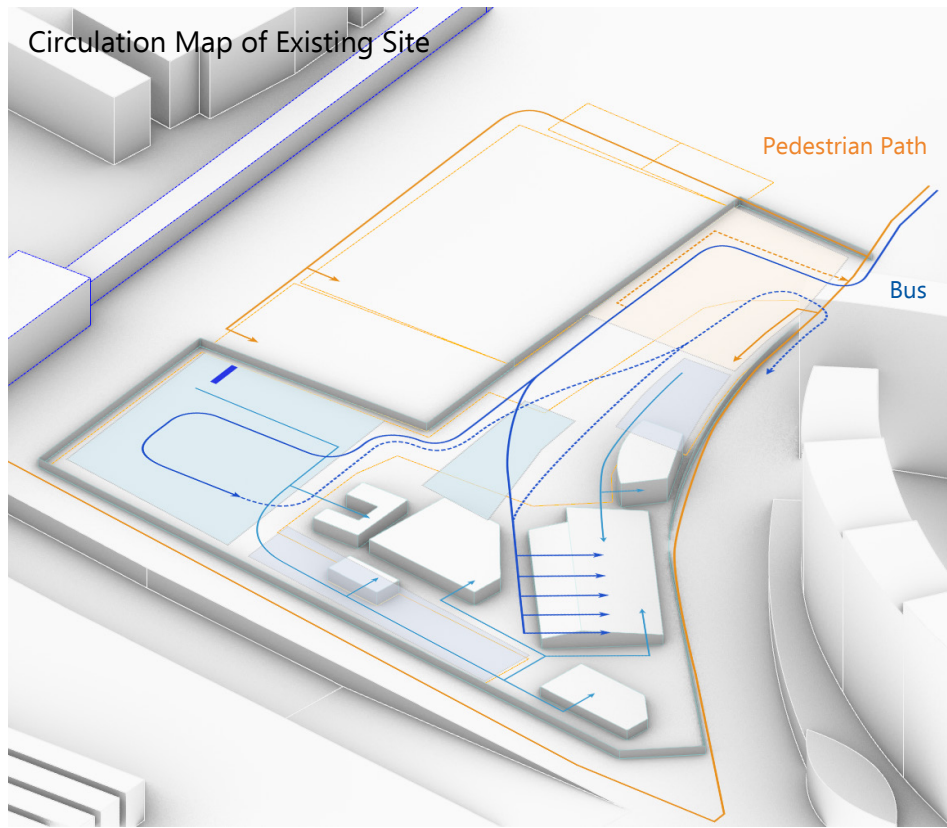


Every block highlighted is an university campus, forming the most cultural-diverse district in Beijing.

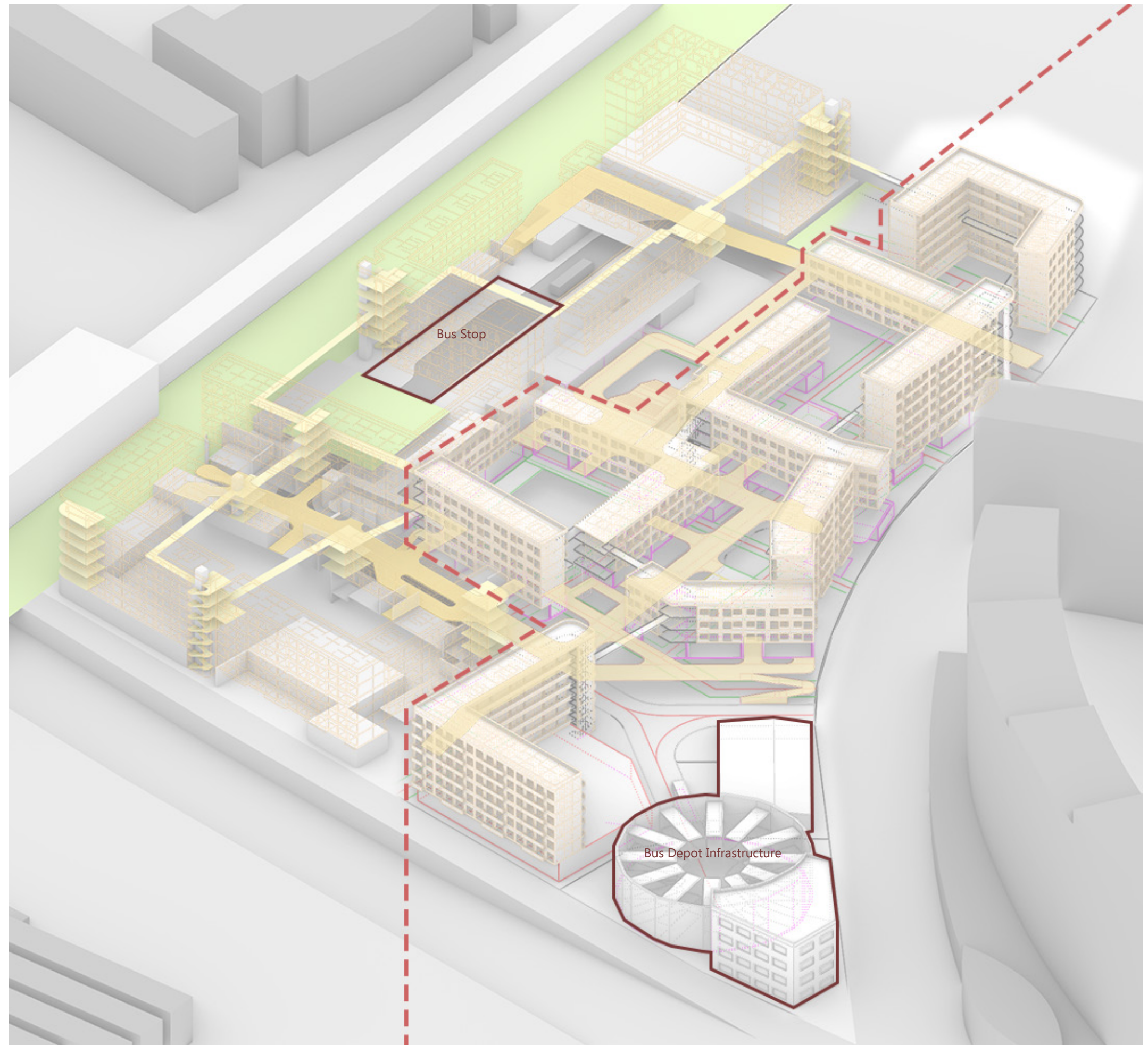
Residential  
Office  
● Bus Depot

## HEATMAP OF URBAN CLUSTERS





BEFORE:  
SITE AS BUS DEPOT



AFTER:  
SITE AS YOUNG GENERATION SETTLEMENT

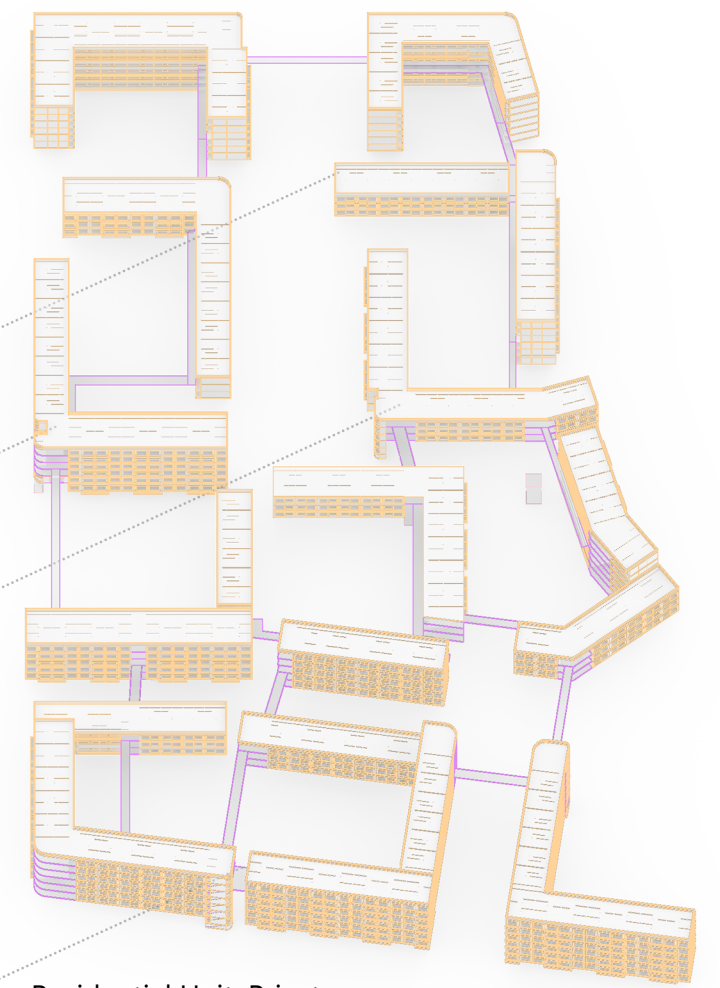
II - BEFORE & AFTER





Pedestrian Network

Ground & Platform: Public



Residential Unit: Private