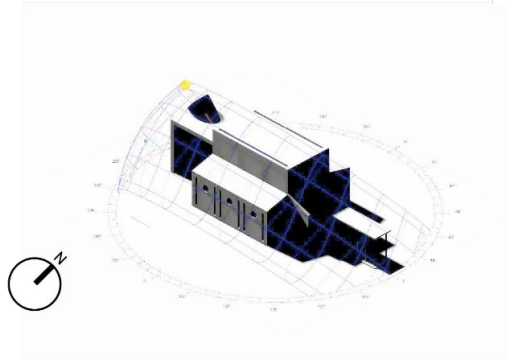
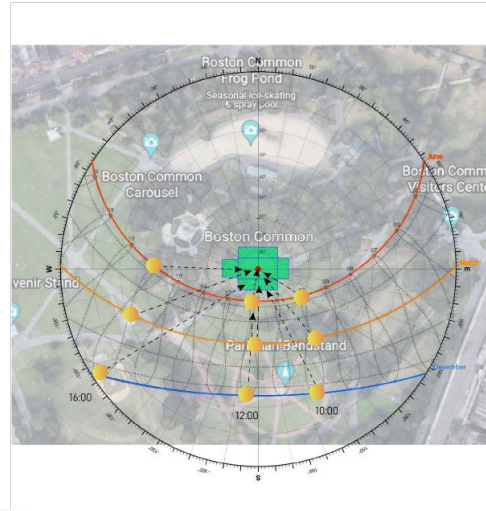


The Immersed Sanctuary

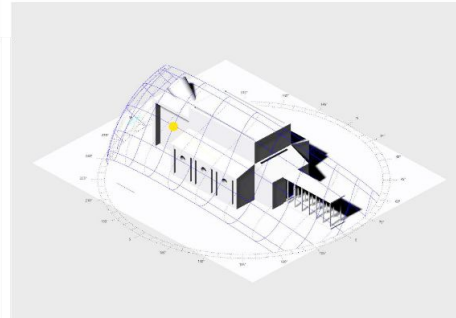
By Kerol Kaskaviqi

BOSTON COMMONS

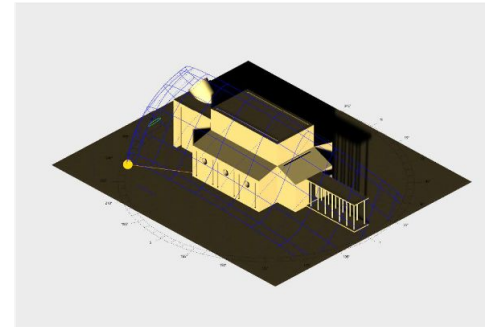
42.37°N, 71.02°W



06.21, 16:00



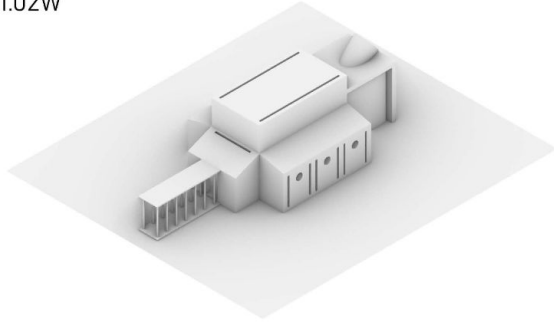
03.21, 12:00



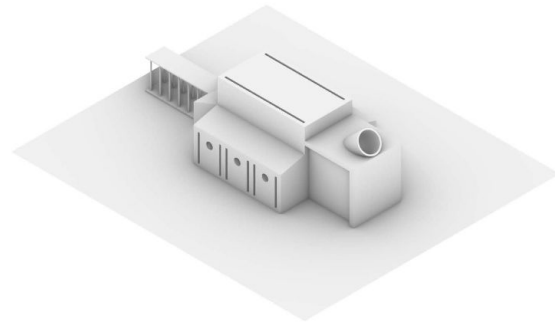
12.21, 09:00



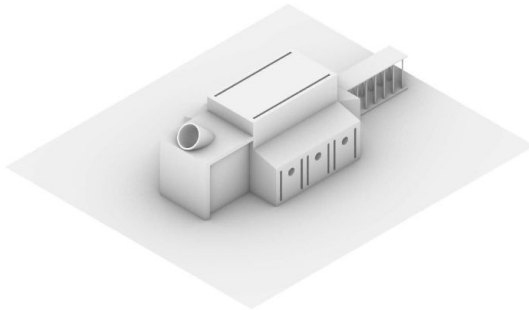
BOSTON COMMONS
42.37°N, 71.02°W



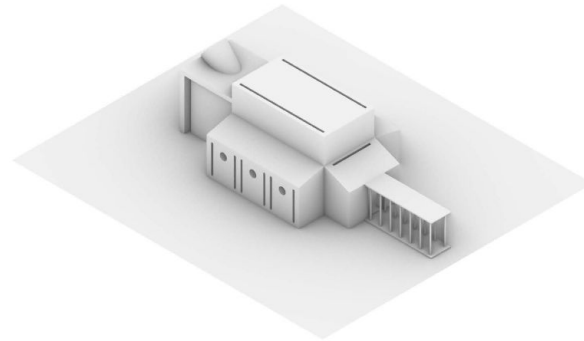
NE PERSPECTIVE



NW PERSPECTIVE



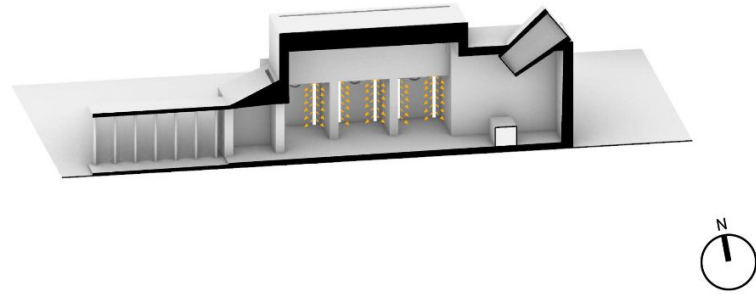
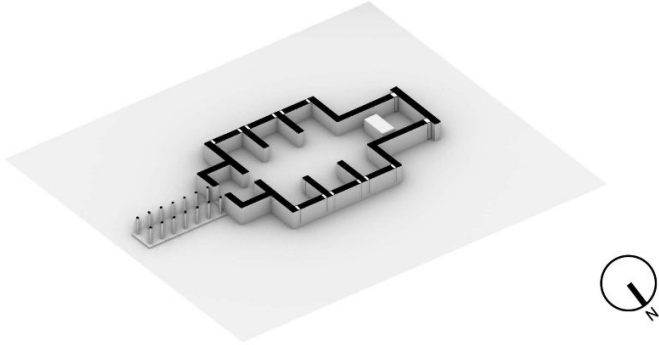
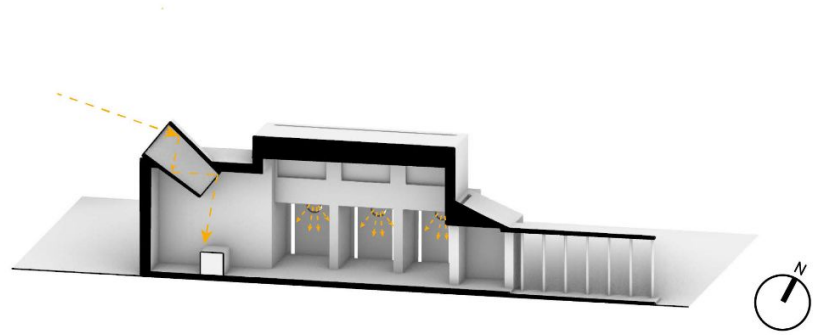
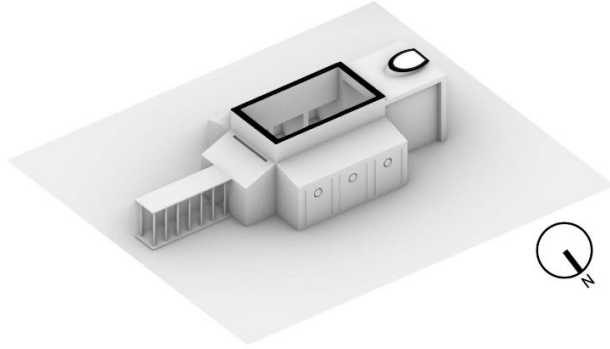
SW PERSPECTIVE

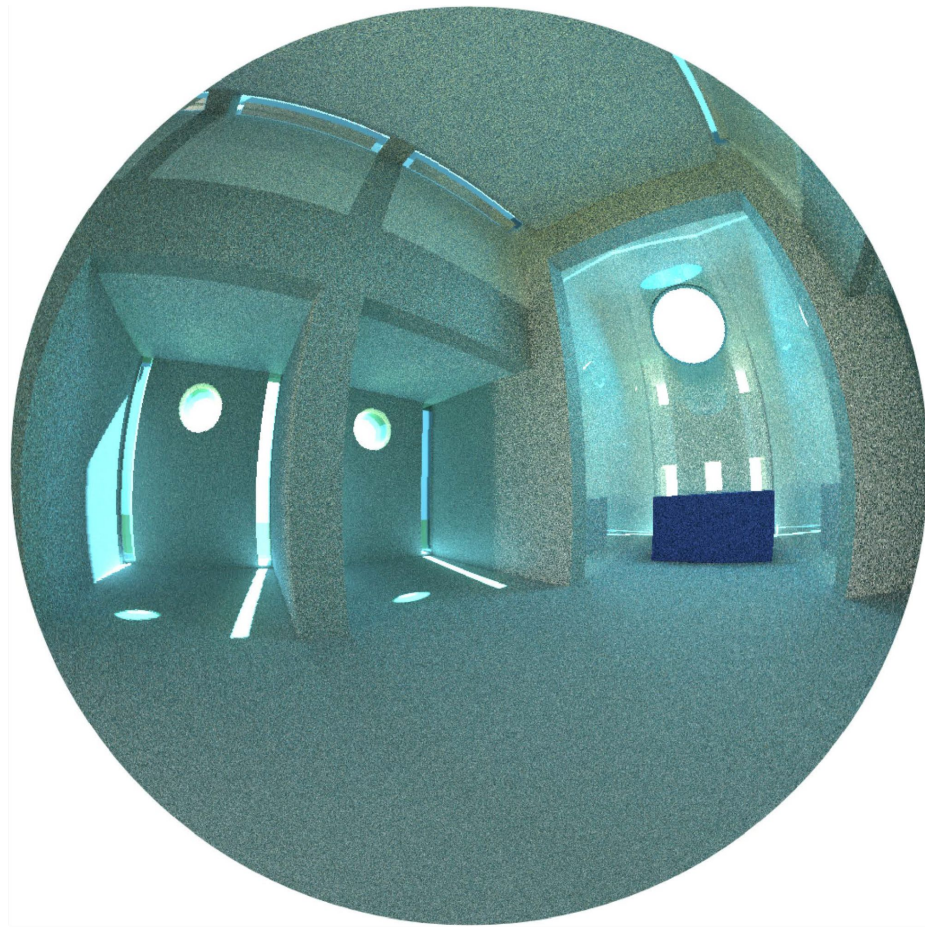
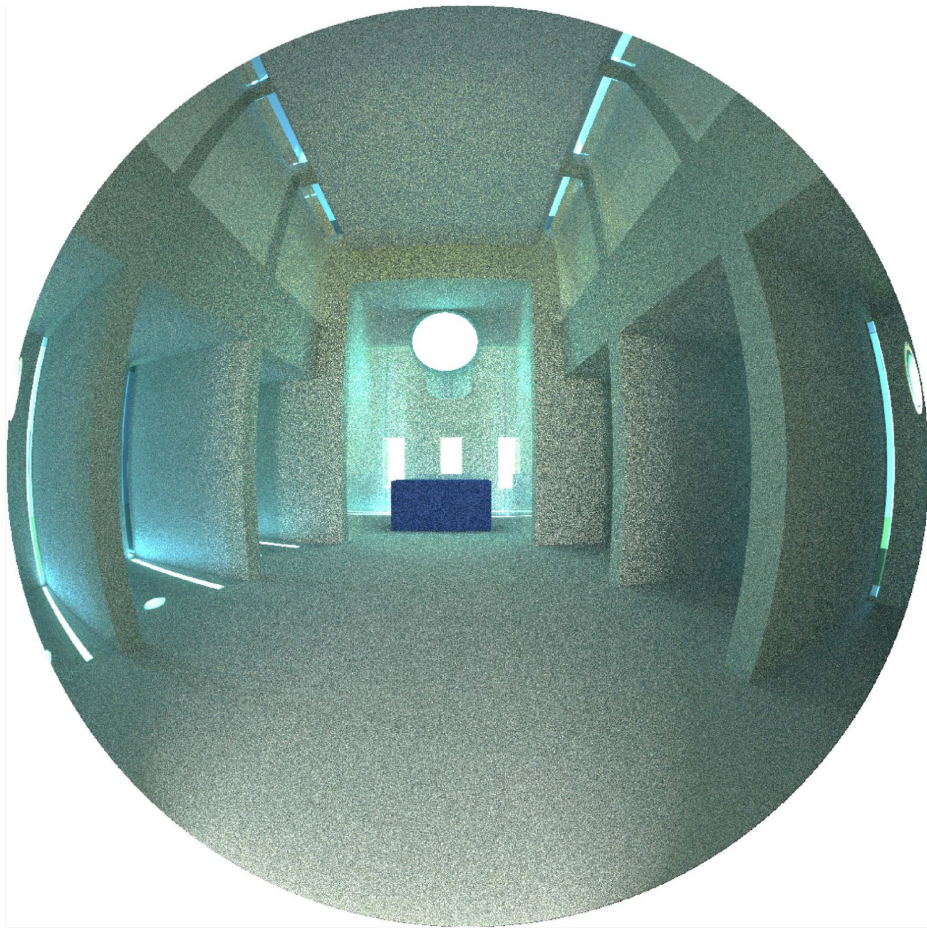


SE PERSPECTIVE

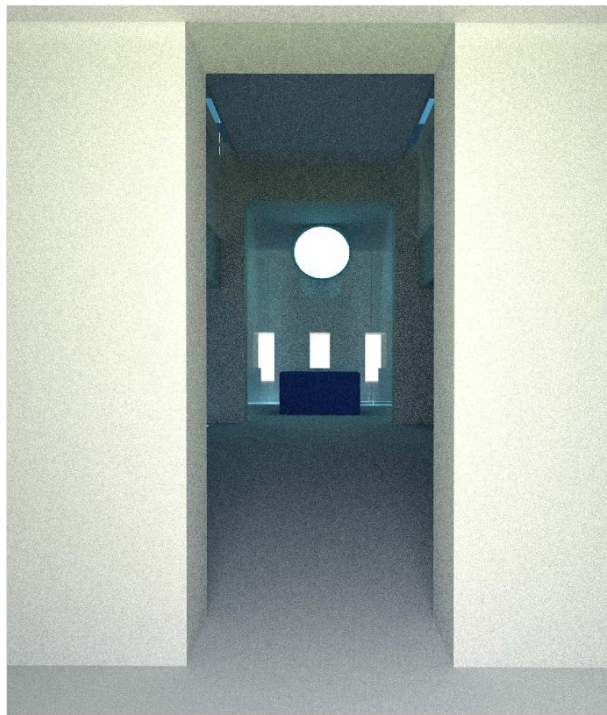


BOSTON COMMONS
42.37°N, 71.02°W

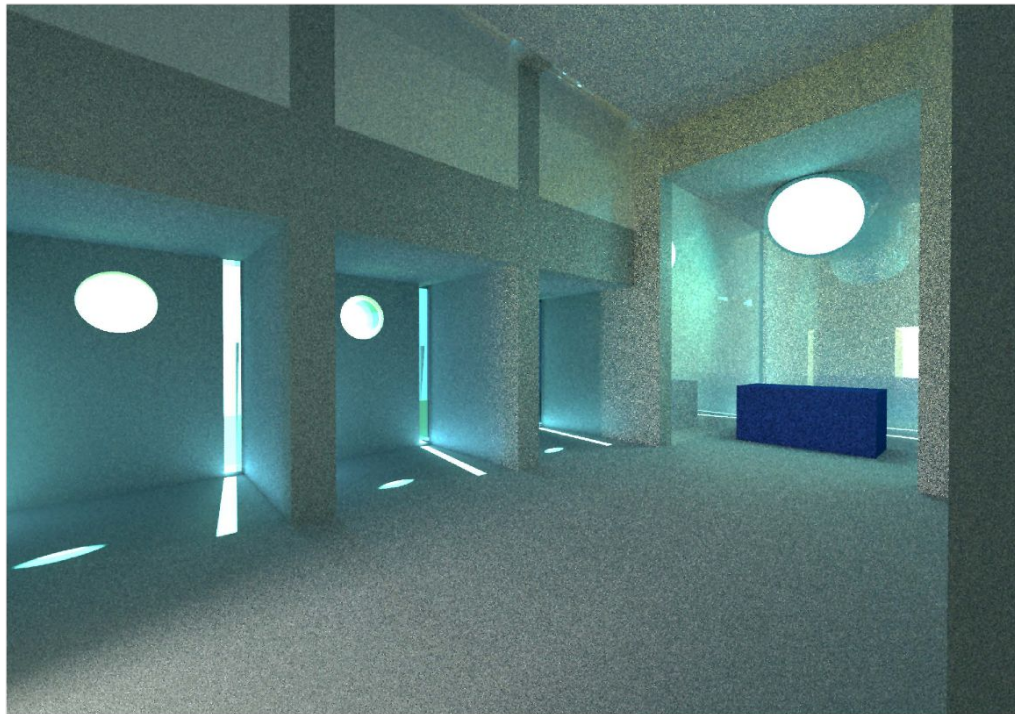




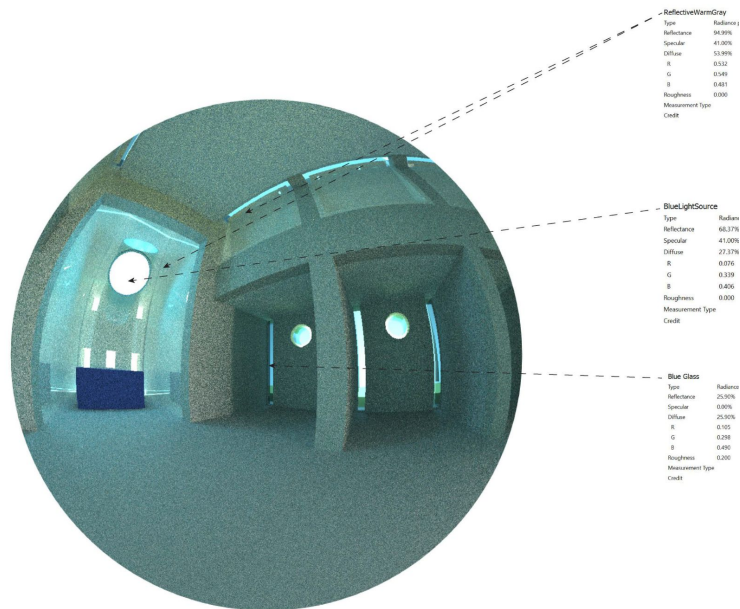
09.21, 12:00



09.21, 12:00
Entrance

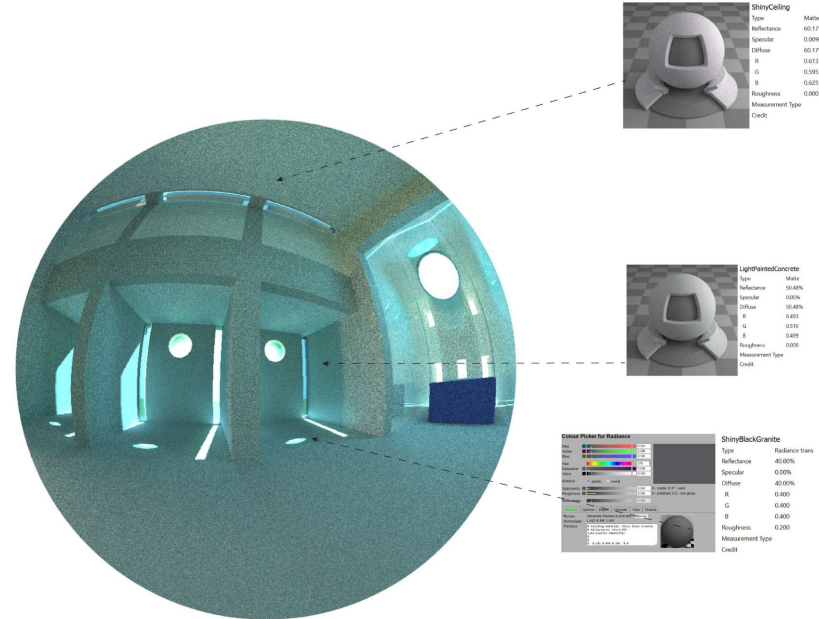


09.21, 12:00
Interior Perspective



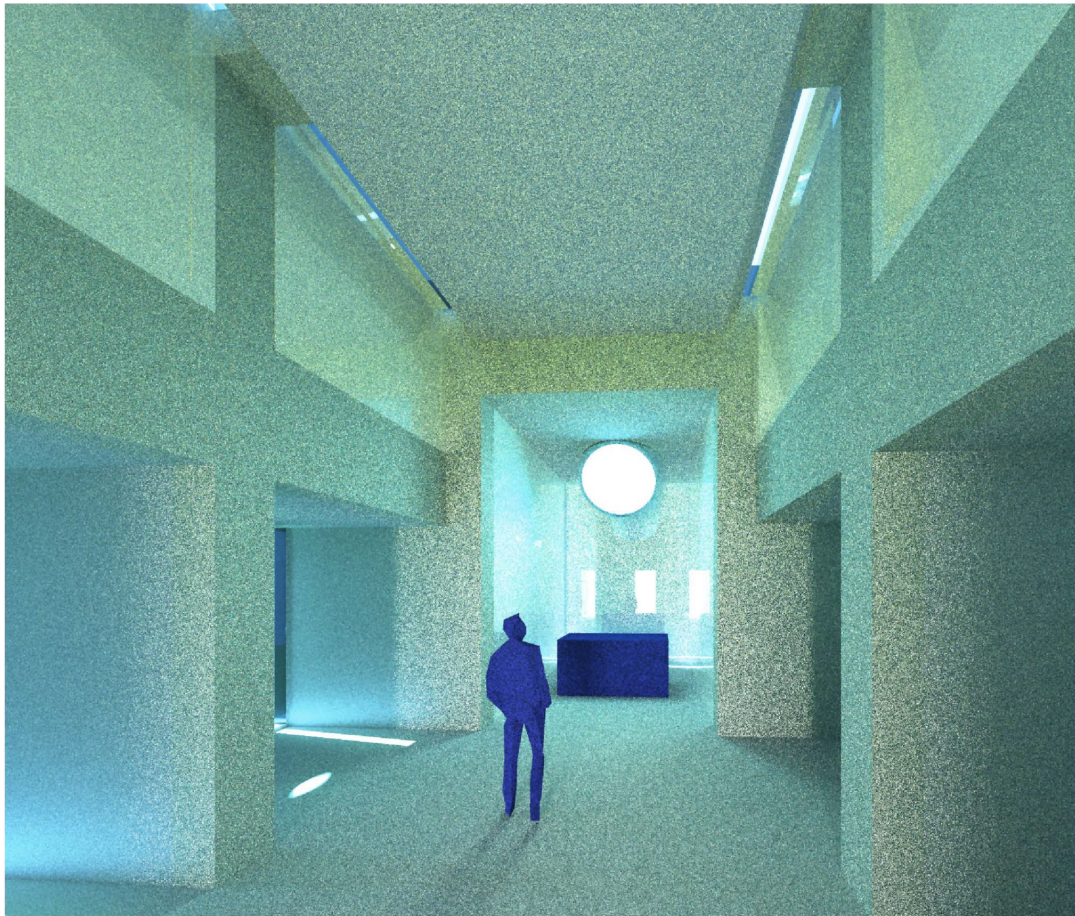
SEPTEMBER 23rd, 12:00 PM

★ ShinyCeiling	Matte	0.00	60.2%	60.2%	0.0%	0.0%	0.0%	0.0%
★ LightPaintedConcrete	Matte	0.00	50.5%	50.5%	0.0%	0.0%	0.0%	0.0%
★ ReflectiveWarmGray	Radiance plastic	0.00	95.0%	54.0%	41.0%	0.0%	0.0%	0.0%
★ BlueLightSource	Radiance plastic	0.00	68.4%	27.4%	41.0%	0.0%	0.0%	0.0%
★ Blue Glass	Radiance trans	0.20	25.9%	25.9%	0.0%	11.1%	10.0%	1.1%
★ ShinyBlackGranite	Radiance trans	0.20	40.0%	40.0%	0.0%	40.0%	36.0%	4.0%
★ Blue Glass2	Radiance trans	0.20	13.1%	13.1%	0.0%	13.1%	11.8%	1.3%



SEPTEMBER 23rd, 12:00 PM

★ ShinyCeiling	Matte	0.00	60.2%	60.2%	0.0%	0.0%	0.0%	0.0%
★ LightPaintedConcrete	Matte	0.00	50.5%	50.5%	0.0%	0.0%	0.0%	0.0%
★ ReflectiveWarmGray	Radiance plastic	0.00	95.0%	54.0%	41.0%	0.0%	0.0%	0.0%
★ BlueLightSource	Radiance plastic	0.00	68.4%	27.4%	41.0%	0.0%	0.0%	0.0%
★ Blue Glass	Radiance trans	0.20	25.9%	25.9%	0.0%	11.1%	10.0%	1.1%
★ ShinyBlackGranite	Radiance trans	0.20	40.0%	40.0%	0.0%	40.0%	36.0%	4.0%
★ Blue Glass2	Radiance trans	0.20	13.1%	13.1%	0.0%	13.1%	11.8%	1.3%



09.21, 12:00
Detail

The soft blue light in the sanctuary wraps around the experience almost like a warm blanket, making the light design quite successful. The experience gets enriched by the fragments of direct light that hits sharply in juxtaposition with the diffused blue lights, create the illusion that one is under water. The reflective surfaces at the nave help create a focal experience that draws the inhabitants while the side chapels help establish a rhythm that culminates at the nave. Light gets refracted from the conic aperture and defines a culminating moment of light which is enhanced for the visitors as you walk in from the roof apertures. The approach towards the sanctuary is rather a traditional one, with light feeling mystical, descending from above, but also embracing you from around through its blue tonalities. This concept is structured around the processional experience of light turning from sharp and direct to diffused, creating a sense of structure and fluidity as you walk through.

Reflecting on design decisions and in bettering the results of this project, I would have spent some more time in the side chapel apertures. During the development of the design, it was challenging to balance the light entering from the chapels and the light coming from the conic aperture. One of the qualities that I would like to challenge is the amount of light that the sanctuary lets in by trying different size apertures. In addition, I decided to make the North and South chapels symmetrical in terms of geometry and apertures. However, due to the orientation of the sanctuary, access to light does not read as symmetrical. Hence, if time permitted, and with the newly acquired skills of understanding and playing with light I would challenge the light symmetry between the northern and southern chapels.