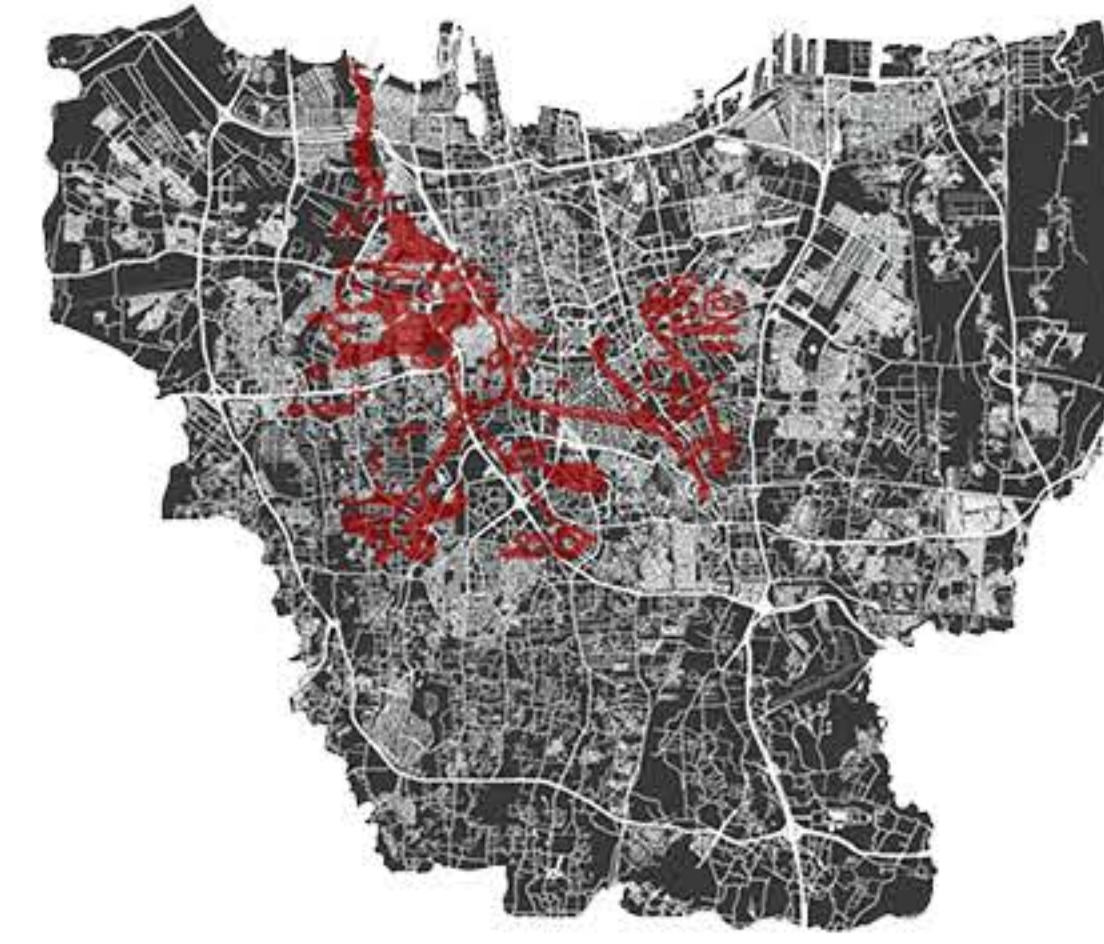
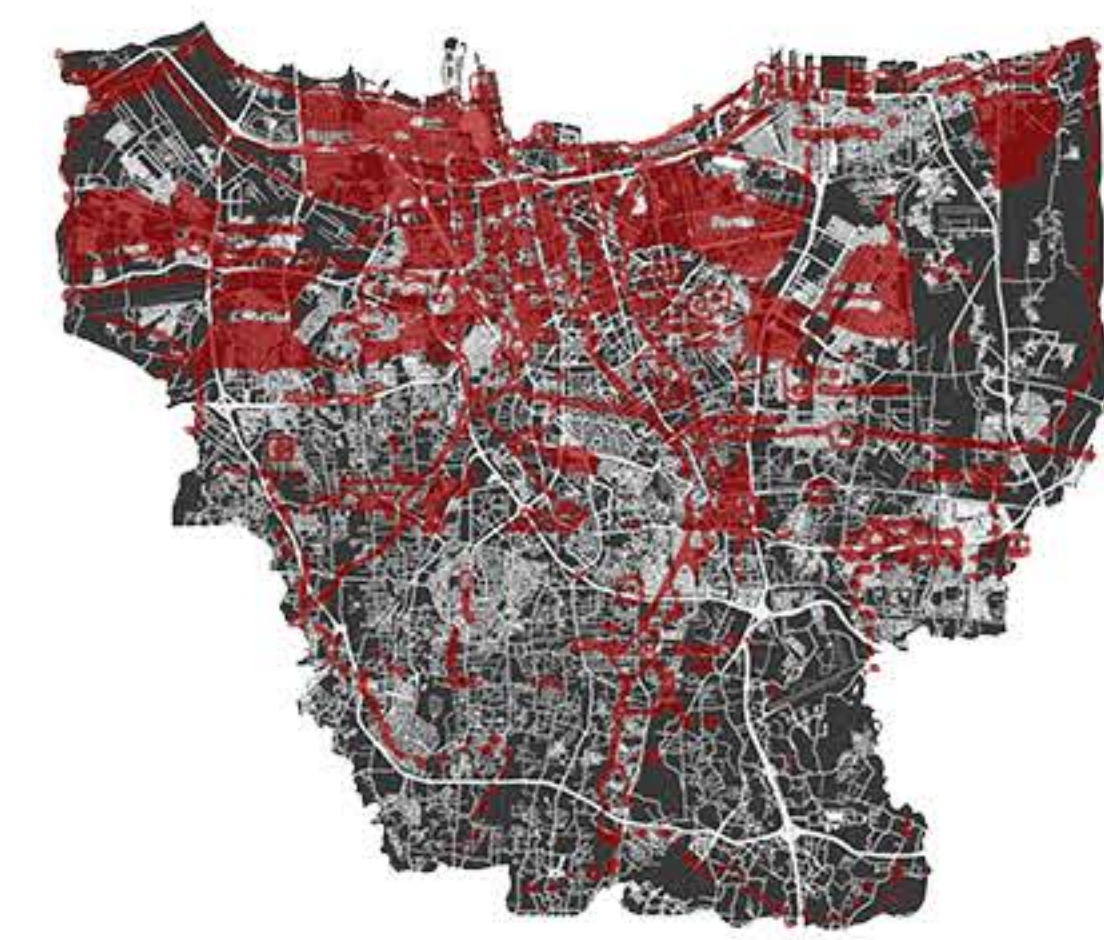


# RECLAIMING RECLAMATION

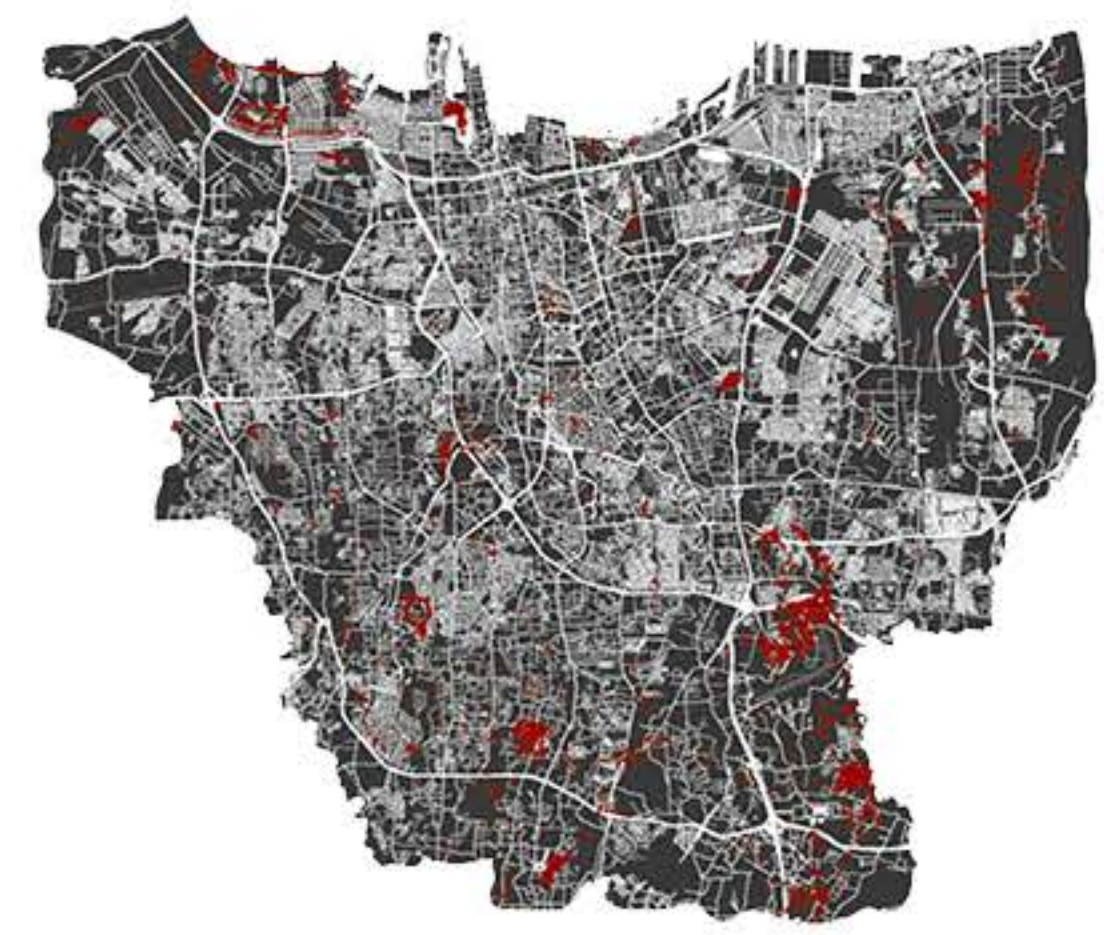
THE INHERITED LEGACY OF COLONIALISM



- **1740** Batavia Massacre on Chinese Descent



- **1984** Tanjung Priok Tragedy



- **1998** Riots of Indonesia



- **Post-Riots** urban sprawl of slum areas



Living in constant disruption of eviction threats throughout the history, Cilincing Fishing Village is one of Jakarta's North Coast inhabitants that will face direct ecological and political erasure in the near future. The ability to manage and distribute these conflicts in strategic timely approach become crucial for aiding the community's exclusion in current development plan. By maintaining its ability to adapt and self-regulate, the fishermen community can reclaim its place, heal the environment and enhance their livelihood.

Reclaiming Reclamation aim to design adaptive urban infrastructure that mainly focuses on mangrove restoration, fish farming through silvofishery, and preserving the activities of the oldest crematorium and columbarium existing on site. Through the ethics of care as a foundational approach, the fishing communities are equipped with the elements to adapt with both political and environmental scenarios. By giving this agency to the fishing community, they can reclaim their place and livelihood while adapting to the government reclamation plan, not to mention, holding an important role as the frontliners of resiliency in Jakarta's North Coast.

## EXISTING CONDITION:

**A.** The coastal line is filled with trash and hadn't been fully cleaned and repurposed.

**B.** Cung Lin Tze is the oldest and largest crematorium in Jakarta since 1975. Part of the procession include corpse-burning and scattering ashes at sea.

**C.** Fish Market located in small roads in between housing area creating some traffics between motorcycle - human.

**D.** Kalibaru river is congested and filled with trash, resulting in cleaning and repurposing the existing dyke.



**SELECTED PLACE:**  
CILINCING FISHING  
VILLAGE (KAMPUNG  
NELAYAN  
CILINCING),  
NORTH JAKARTA



## RECLAIMING RECLAMATION

ERASURE = EVICTION (RECLAMATION PLAN AND SEA LEVEL RISE)

### PROPOSED PLAN:

- A.** Repurposing the coastal line as mangrove restoration area integrated with dyke as a form of protection from the storm and purifying the current water condition
- B.** Designing a specific port for ashes scattering ceremony
- C.** Fish Market located in small roads in between housing area creating some traffics between motorcycle - human.
- D.** Moving the existing activities of fish market to new reclamation land O as aligned with waste processing

1. Creating Mangrove pockets along with dyke
2. Designing a promenade experience oriented towards the silvofishery area
3. Silvofishery as the beginning of fishing ecology transition from fish-hunting to fish-farming
4. Shared space on ground level on existing housing typology

