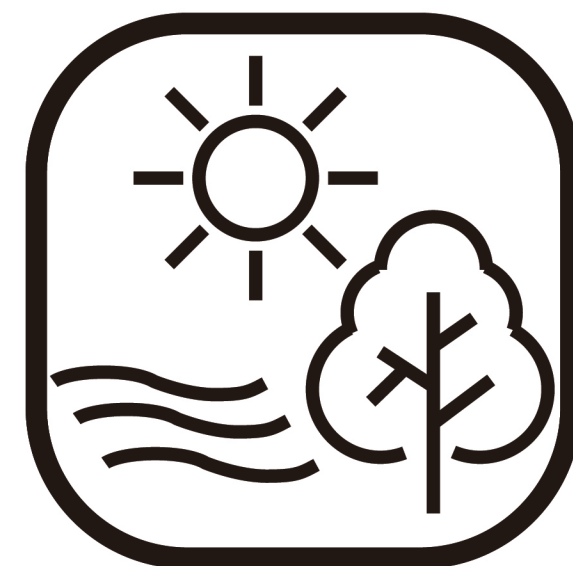
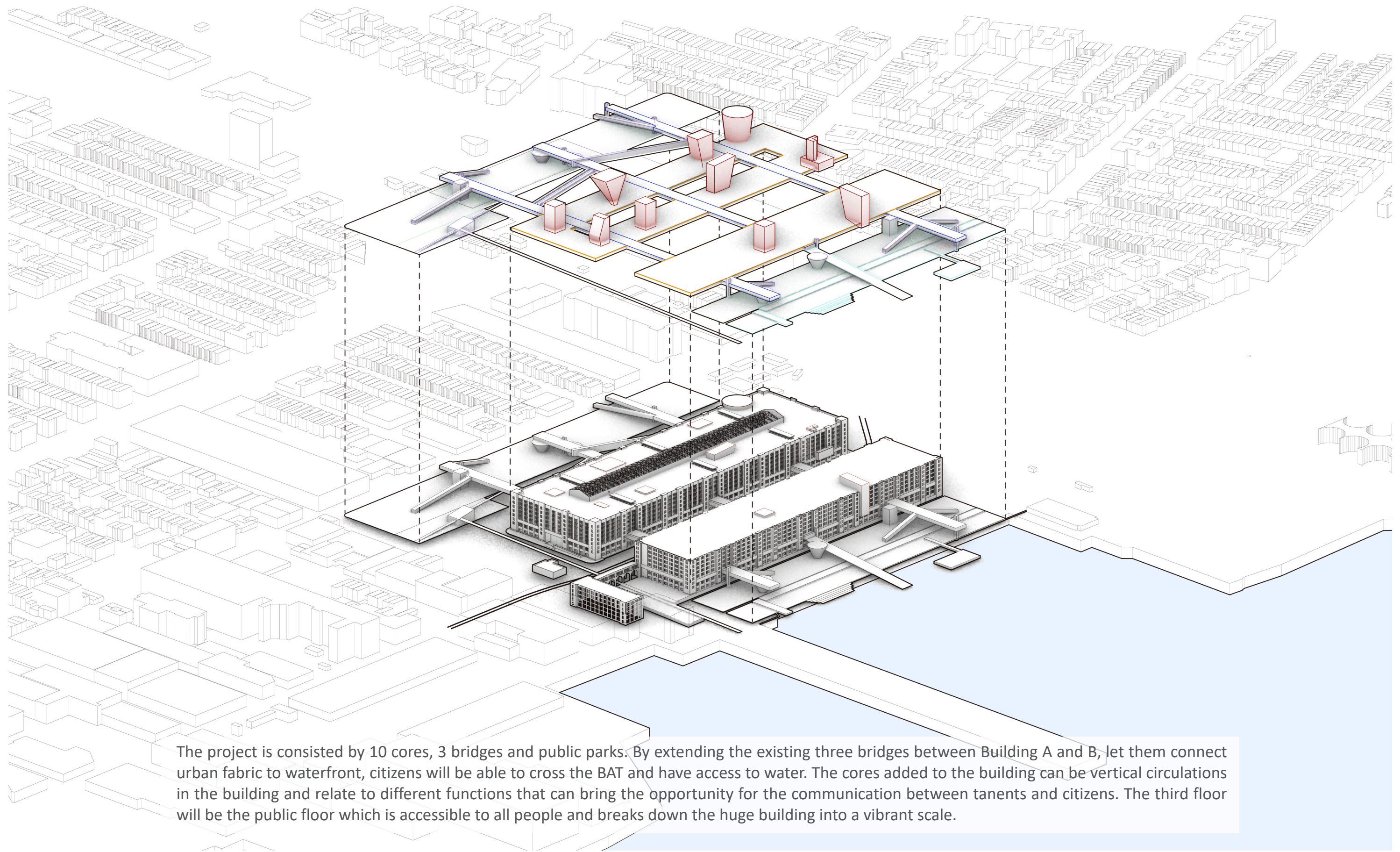


Jiaying Qu
Accessibility to A Vibrant Scale

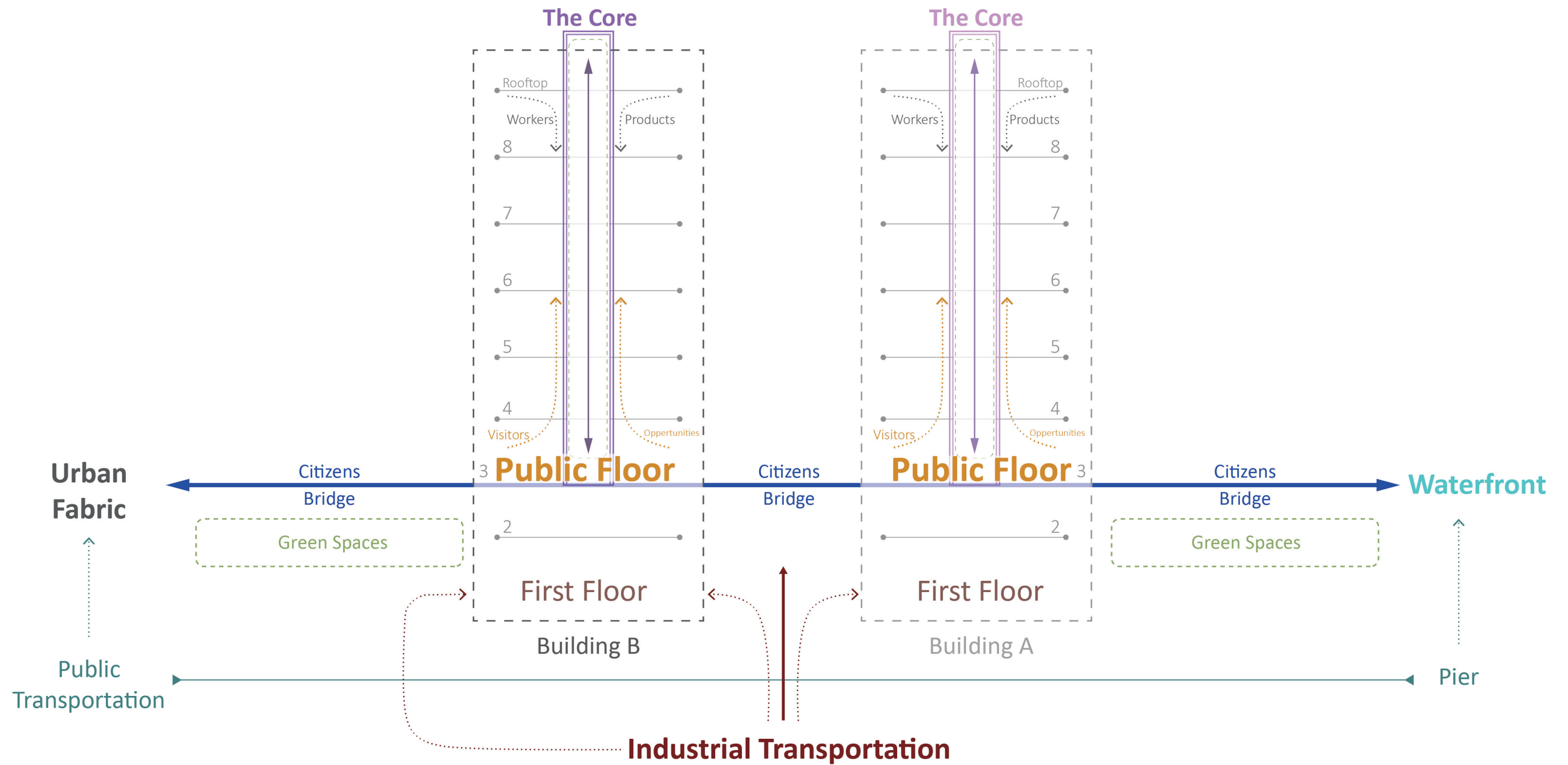




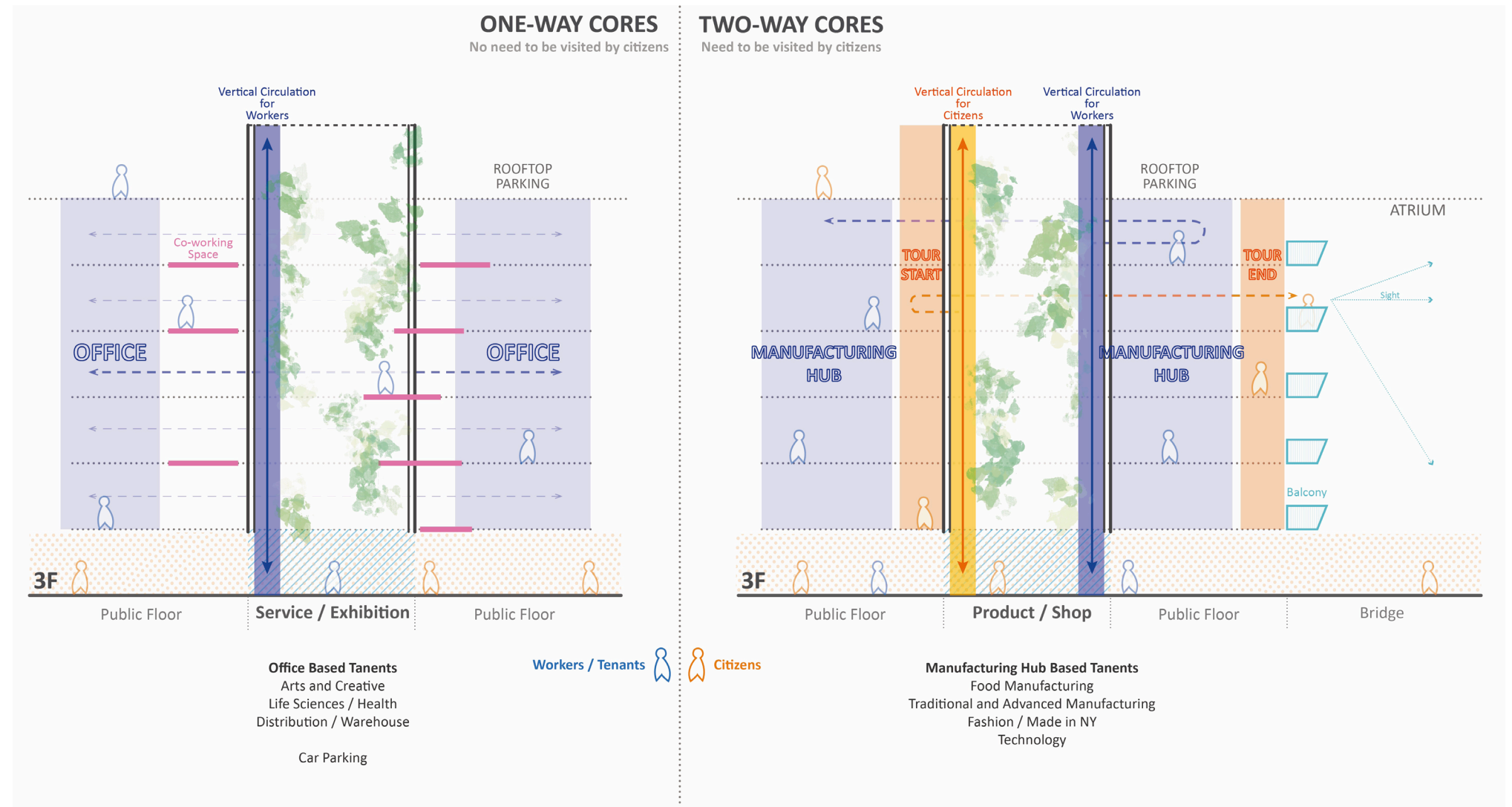
The project is consisted by 10 cores, 3 bridges and public parks. By extending the existing three bridges between Building A and B, let them connect urban fabric to waterfront, citizens will be able to cross the BAT and have access to water. The cores added to the building can be vertical circulations in the building and relate to different functions that can bring the opportunity for the communication between tanents and citizens. The third floor will be the public floor which is accessible to all people and breaks down the huge building into a vibrant scale.



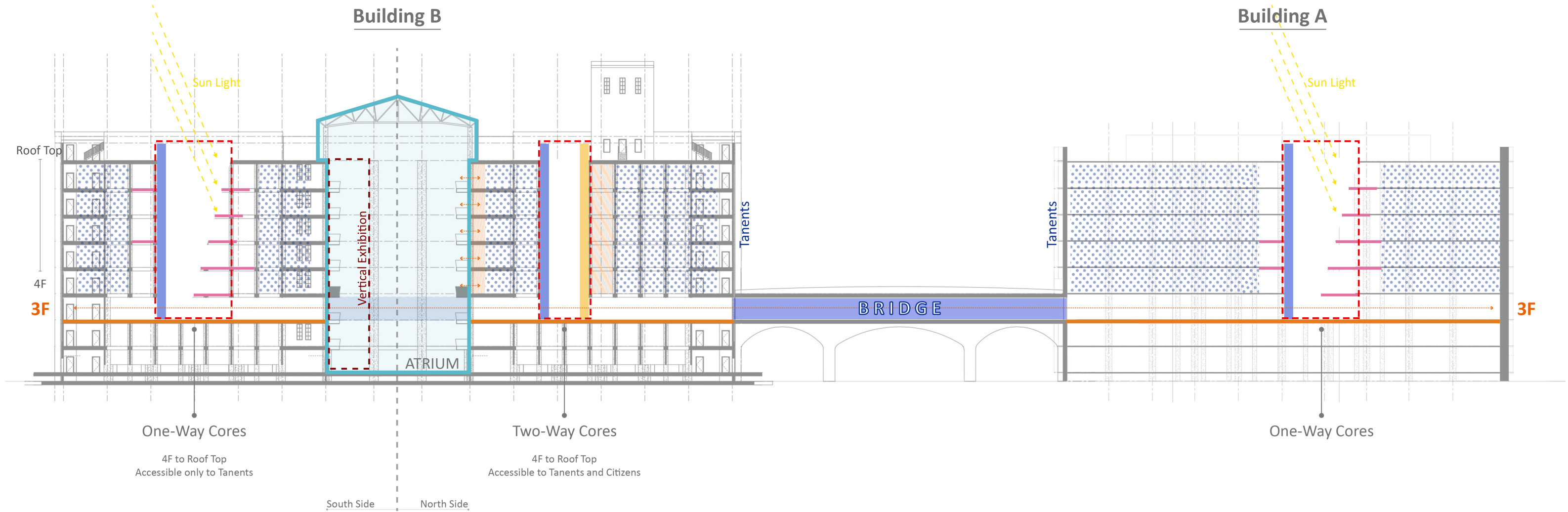
Function Arrangement of the Site



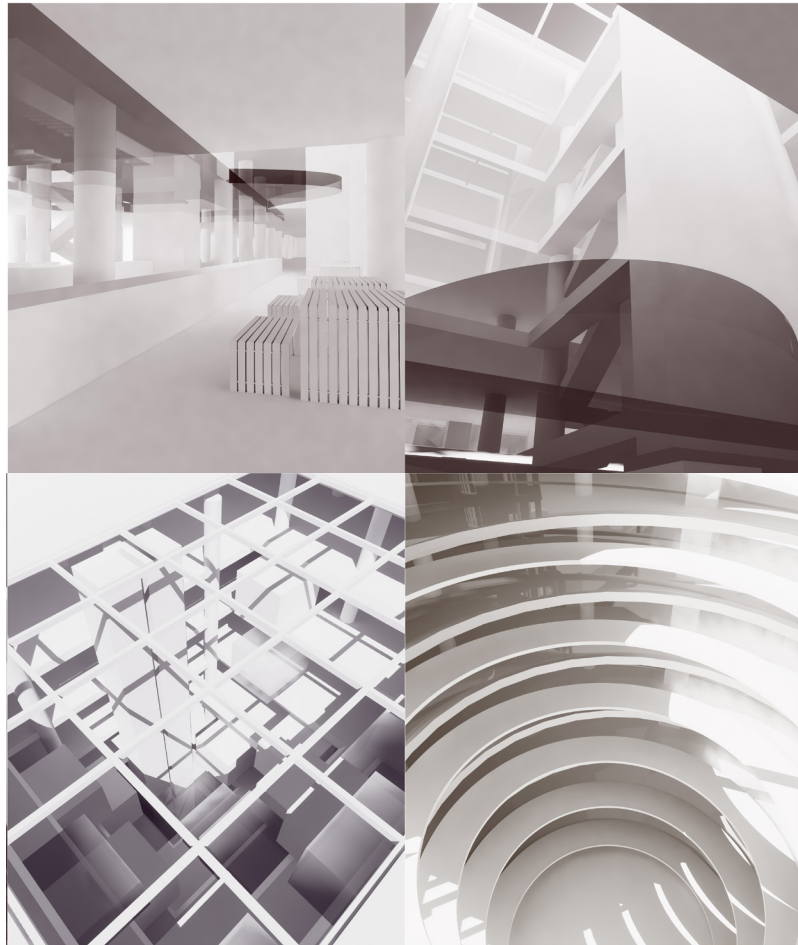
Main Concept - Space Diagram



Categories of the Cores

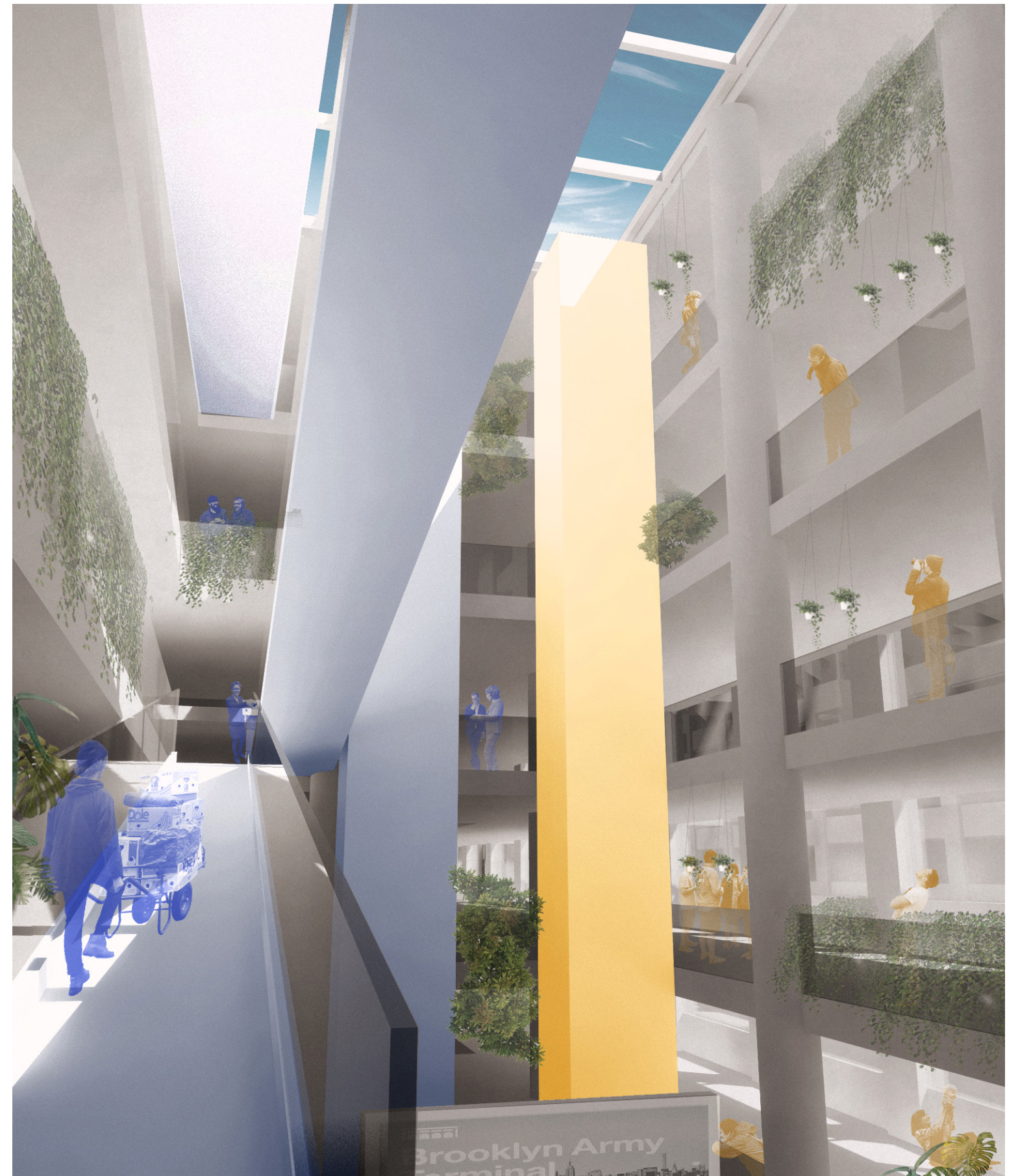


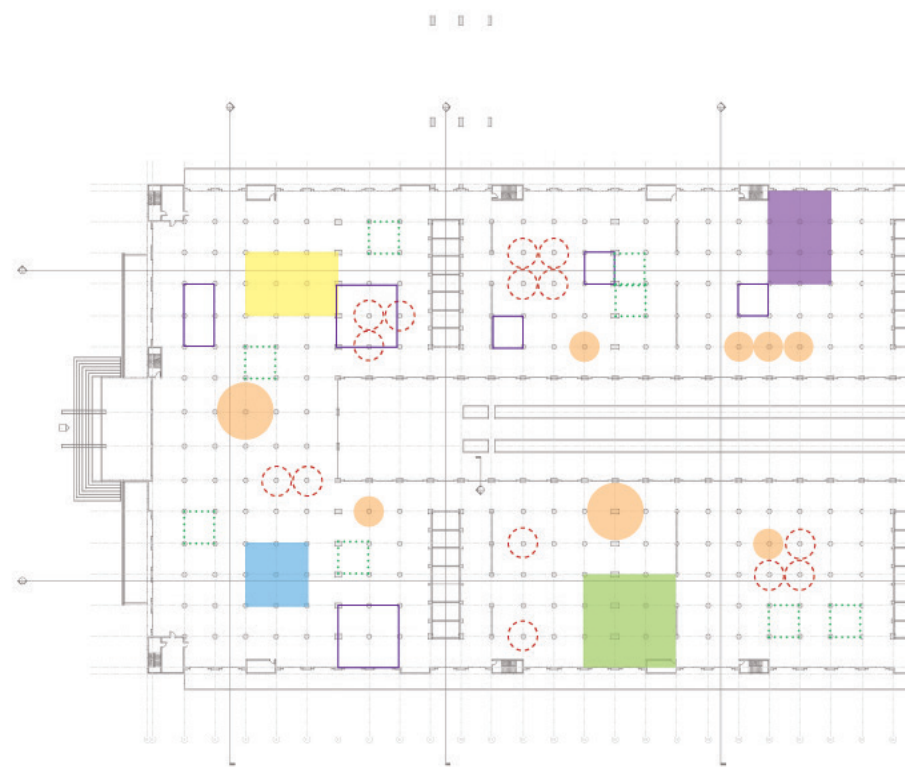
Prototypes of the Cores



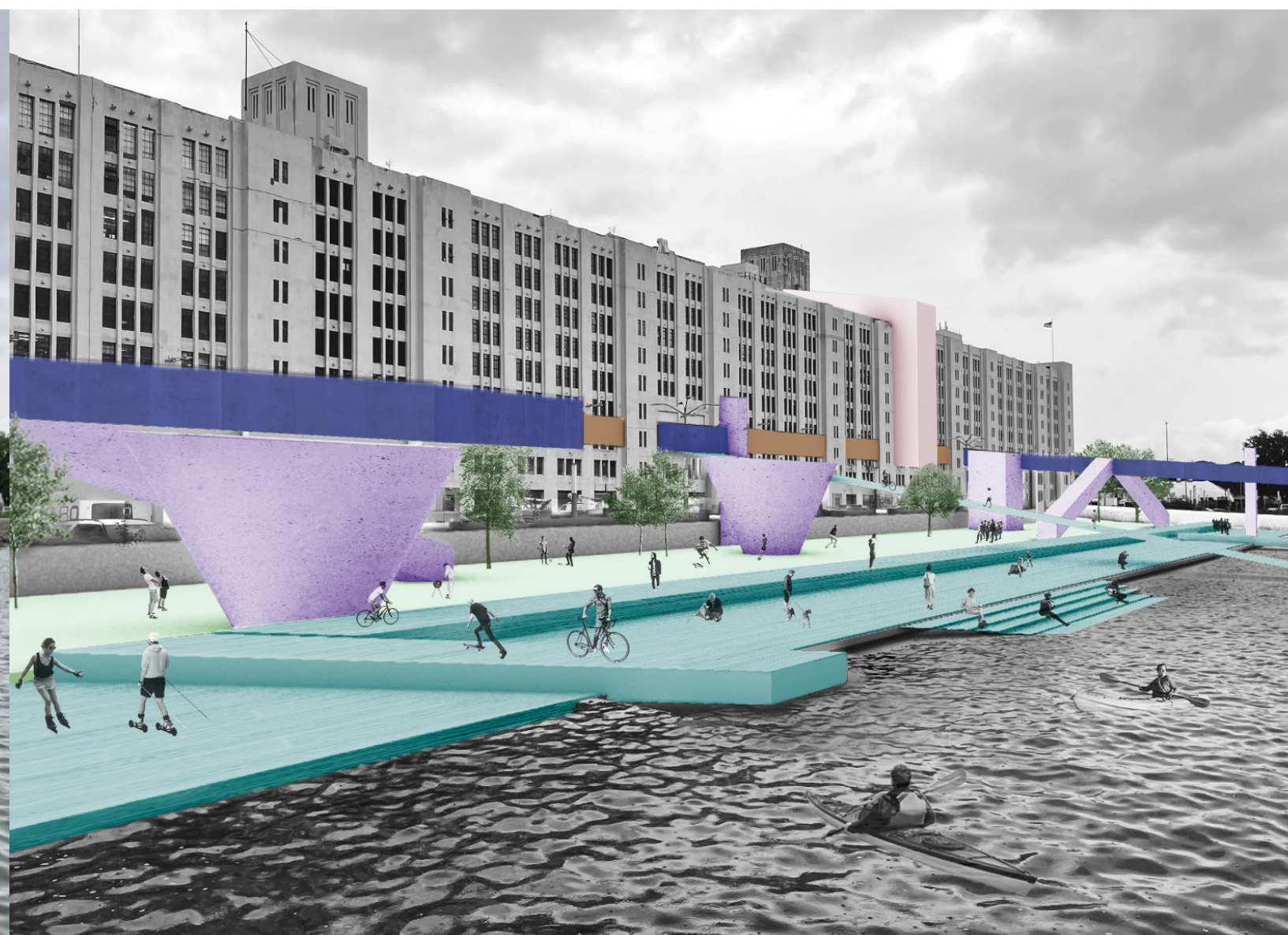
Shadow Relationship in Cores

Manufacturing Core
Perspective





Public Floor - 3rd Floor
Perspective



Waterfront Public Park
Comparison Before and After Renovation