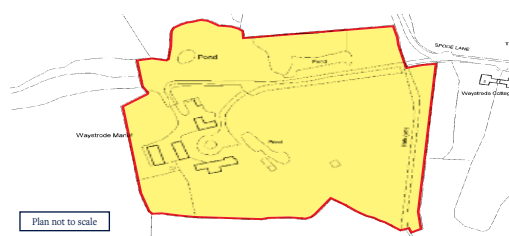
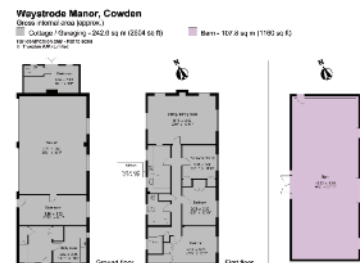
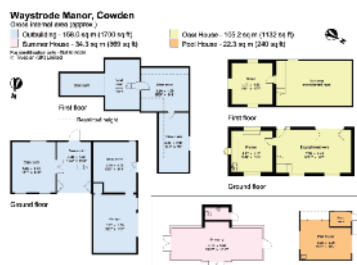


**LOT
169**

Waystrode Manor Spode Lane, Cowden, Kent TN8 7HW



Plan not to scale
Crown Copyright reserved.
This plan is based upon the Ordnance Survey Map with the sanction of the Controller of H M Stationary Office.



A superb Grade II listed Tudor manor house set within grounds of approximately 7.8 acres, with further secondary accommodation including a three bedroom cottage, a Grade II listed barn, oast house, orangery, coach house, pool house, swimming pool and tennis court. Located within an Area of Outstanding Natural Beauty with far reaching views over adjoining countryside on the edge of Cowden village. **Vacant.**

Tenure

Freehold.

Location

- Located on Spode Lane, to the north of Cowden village
- Shopping facilities can be found in the nearby towns of East Grinstead and Tunbridge Wells
- The surrounding countryside provides recreational pursuits to the area

Cowden, Tunbridge Wells

Description

- A three storey detached Grade II listed manor house
- A Grade II listed double vaulted timber barn
- A brick built two storey cottage
- A coach house used for storage
- An oast house arranged as an entertainment room and office
- An orangery

- The properties benefit from landscaped gardens, a swimming pool with pool house and adjoin ponds and gardens

Accommodation

Manor House

- Ground Floor – Four Reception Rooms, Kitchen/Breakfast Room, Utility Room, Separate WC
- First Floor – Three Bedrooms, Two Bathrooms
- Second Floor – Two Bedrooms, Bathroom/WC

Cottage

- Ground Floor – Utility Room, Storage, Garage
- First Floor – Three Bedrooms, Bathroom/WC, Kitchen

Viewing

Please refer to our website savills.co.uk/auctions