



BriceMarden\_ColdMountain

# Specifications System Description

## 1. Building information

The owner of this building is ZTE Corporation. This building is located in the Nanshan District of Shenzhen, a subtropical region. On the other hand, Nanshan District is home to many well-known technology companies. In recent years these companies have been promoting their green determination in various ways. So ZTE decided to transform the façade of this old research center into a green plant wall.

## 2. Inspiration for the painting

Many random and vibrant curves constructed this painting. And the additional transparency of curves gives the painting a sense of space. As a façade design, I wanted the façade to have a different resolution. And like the painting, this façade is spatial. So, I chose to use free curvature steel pipe in a larger scale to imitate the form of the painting. In addition, the façade is planted with natural-growth vines. In this way, the green mass of the vine can give the steel pipe different transparency like the painting, when viewed from a distance. The lines of the vines themselves are also organic like the painting, when viewed from a short distance.

## 3. System Description

The Work of this Section shall include, but is not limited to the following:

- a. Insulating glass units four-side structural silicone glazed onto unitized aluminum frames.
- b. Outrigger for connecting aluminum pipes, fixed by screws to the bracket, directly connected to the anchor by screws.
- c. Planter unit with drain two-side screw onto unitized aluminum frames.
- d. Two-axis joints connect the outrigger and aluminum pipes.

## 4. List of special features of the facade

- a. The plants planted on the façade can shade the sun in summer.
- b. The height lift by the flower pot space can serve as a sill.
- c. System includes external hoses for watering and draining the planters.

## 5. Definition of principal materials

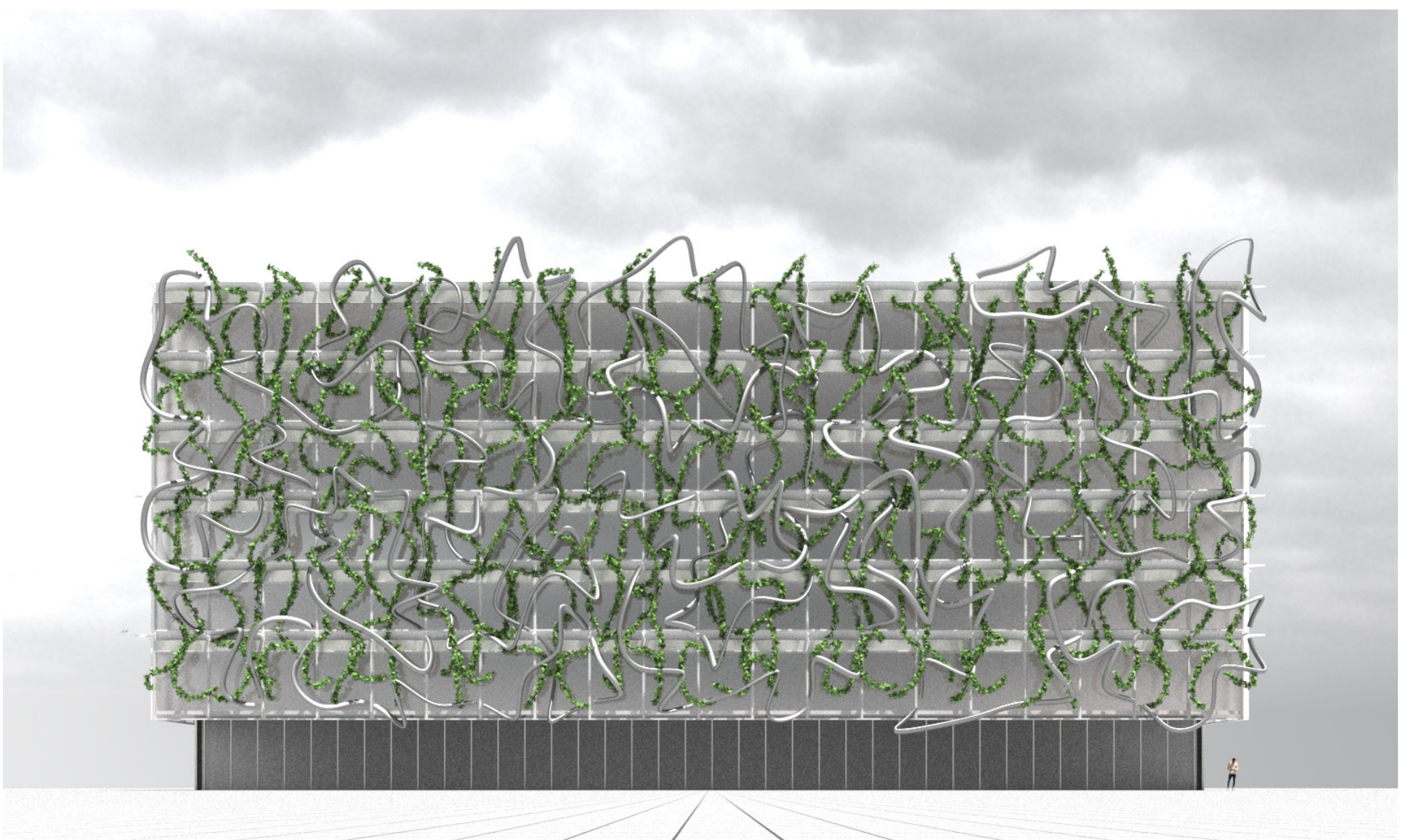
- a. All visible aluminum is silver anodized.
- b. All tear-strip gaskets are made of black sponge EPDM material.



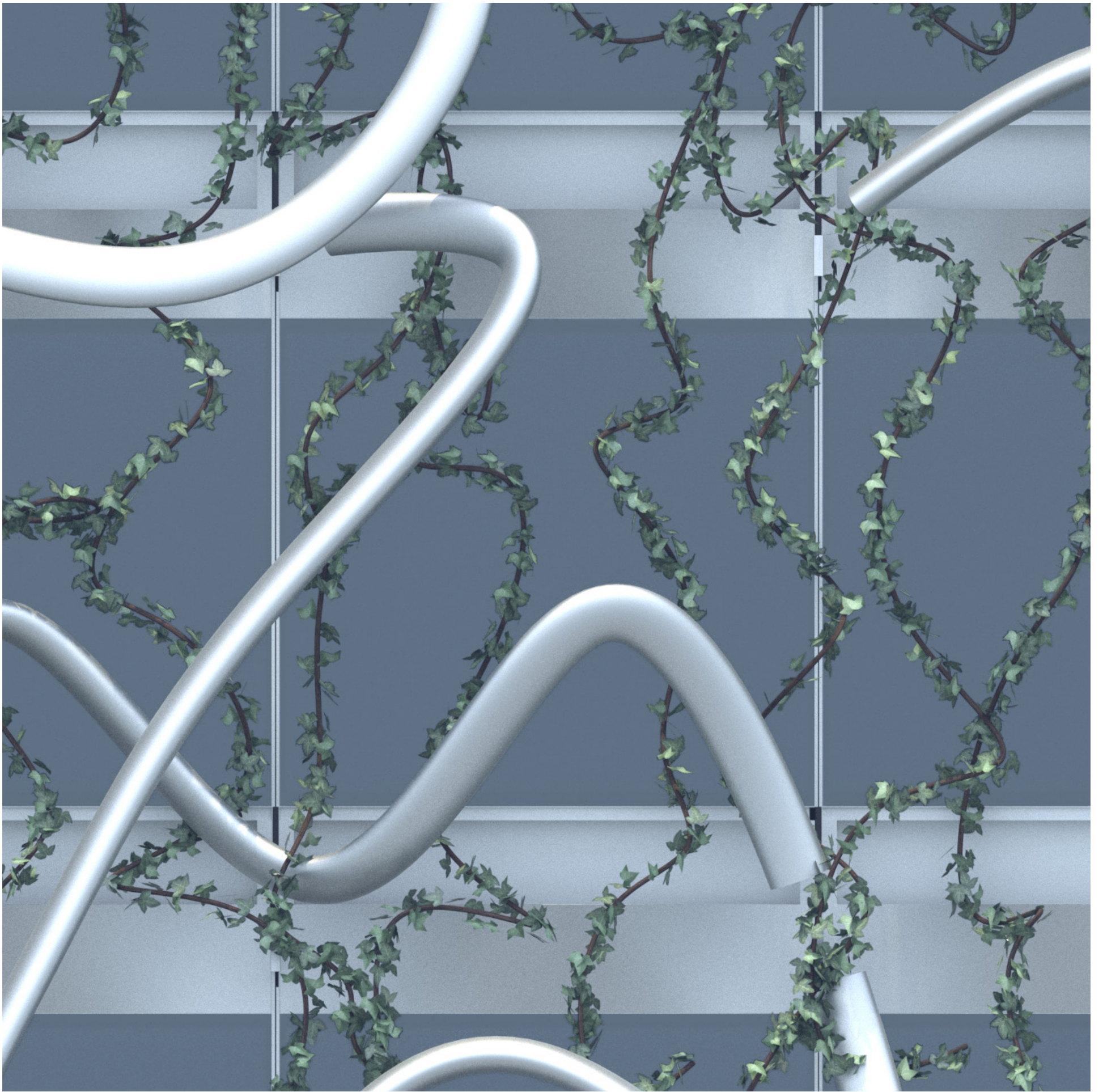
# ZTE Research & Development Building Upgrade

28 Gaoxin Ave 4 S, Nanshan, Shenzhen, Guangdong Province, China

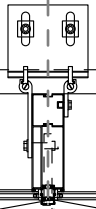
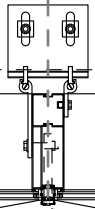
22°32'12.6"N 113°56'48.7"E



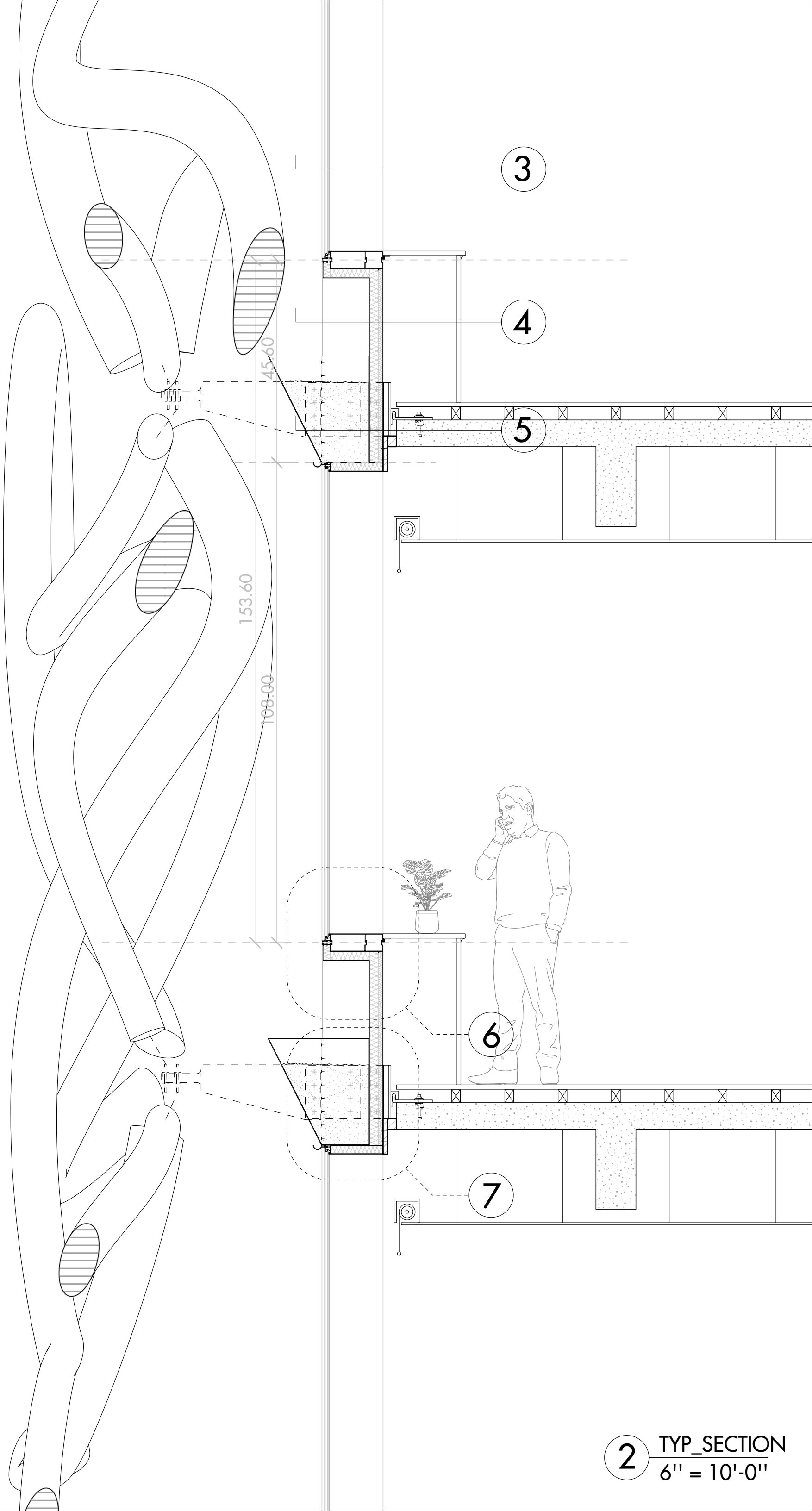




120"



1 PLAN\_A  
1" = 2'-0"



3

4

5

6

7

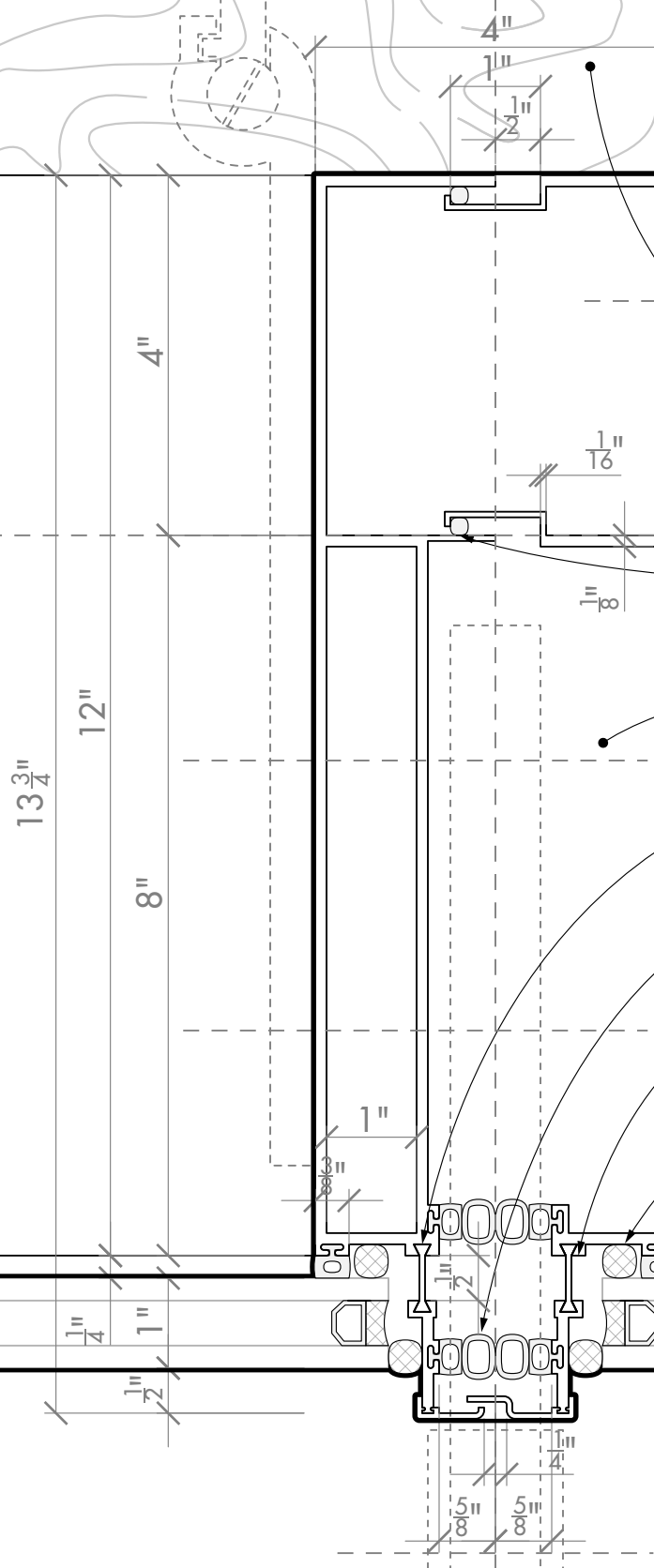
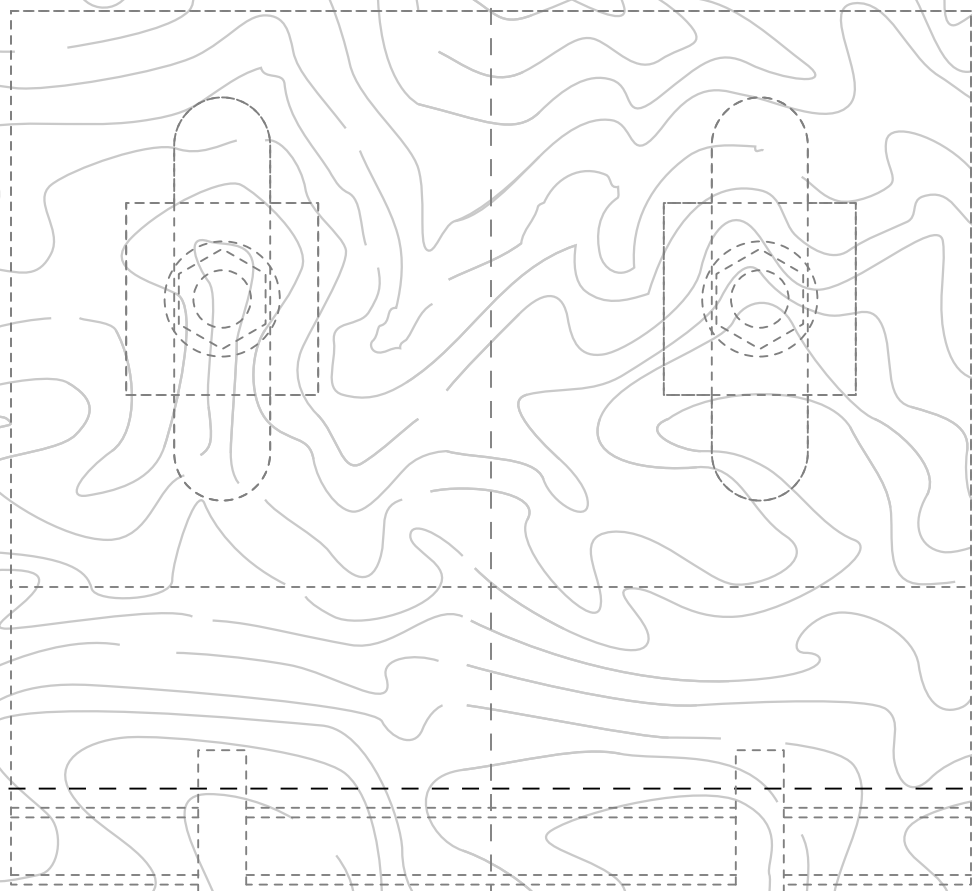
45.60

153.60

108.00

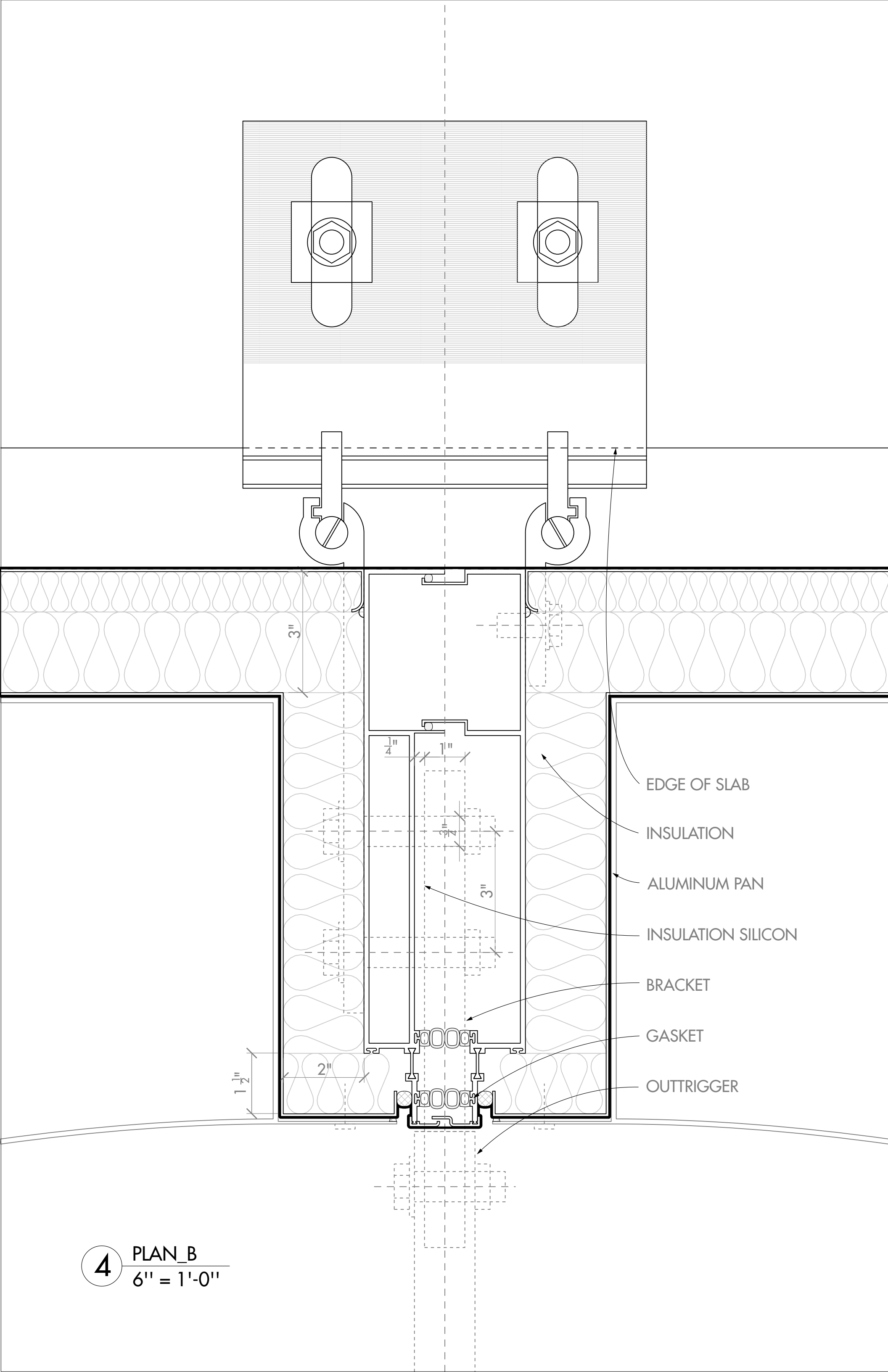
2 TYP\_SECTION  
6" = 10'-0"





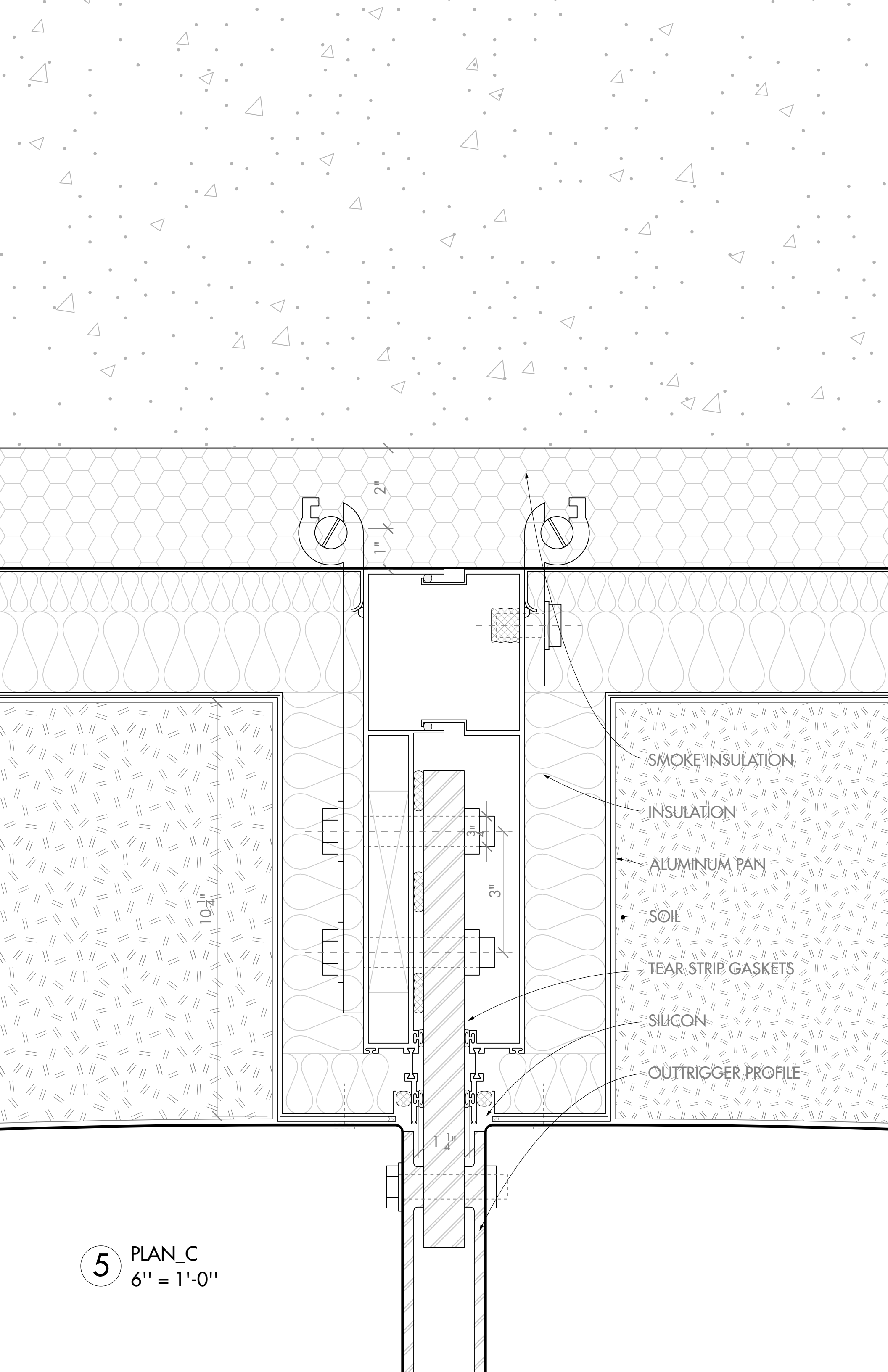
- WOOD SILL
- ALUMINUM MULLION
- AIR SEAL
- PRESSURE EQUALIZED CHAMBER
- POLYAMIDE THERMAL BREAK
- TEAR STRIP GASKETS
- STRUCTURAL SILICONE
- GASKET
- INSULATED GLASS UNIT

3 PLAN\_A  
6" = 1'-0"



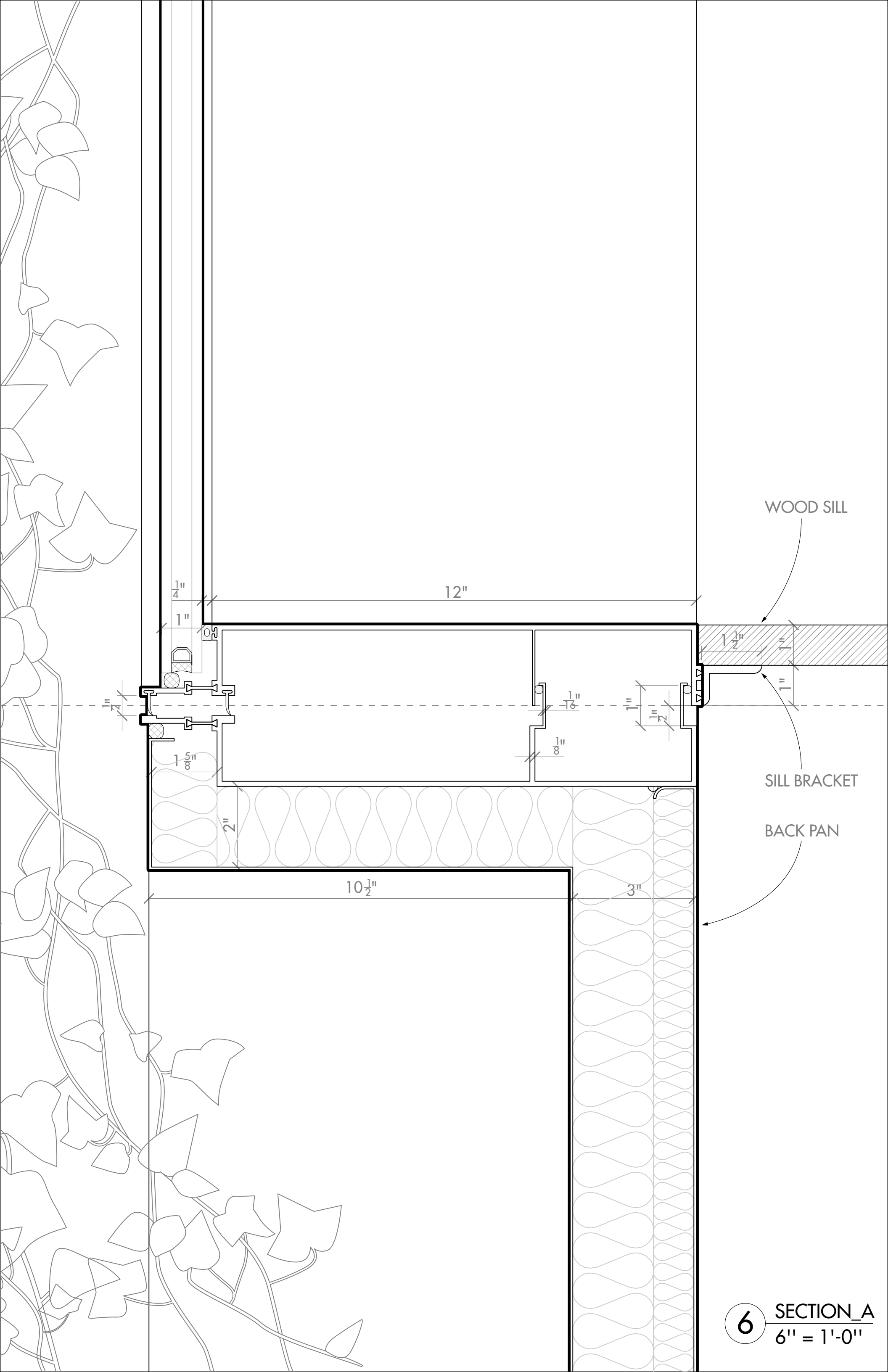
- EDGE OF SLAB
- INSULATION
- ALUMINUM PAN
- INSULATION SILICON
- BRACKET
- GASKET
- OUTRIGGER

4 PLAN\_B  
 6" = 1'-0"



5 PLAN\_C  
6" = 1'-0"





WOOD SILL

12"

1/4"

1"

1 1/4"

1 5/8"

2"

1/16"

1/8"

1"

1/2"

1 1/2"

1"

1"

SILL BRACKET

BACK PAN

10 1/2"

3"



SMOKE SEAL

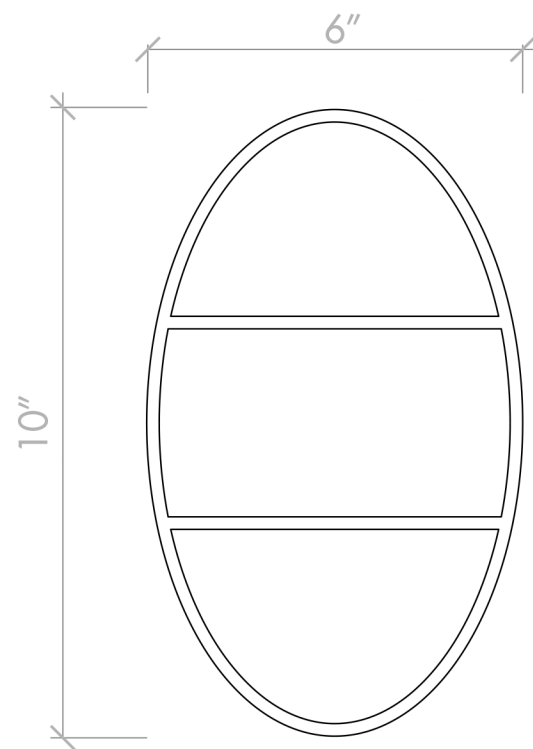
DRAIN PIPE

7 SECTION\_B  
6" = 1'-0"



8

JOINT\_AXON



PIPE PROFILE

