

**Location**

524 E 72nd Street  
New York, NY

**Client**

Two Trees Real Estate

**Type**

Residential

**Concept Description**

The painting is read as a series of rectangular repetitions, distorted and faded at times. A sense of freedom and even organic messiness is generated in the alternations and gradual changes among the rectangular shapes. Embracing the idea of distortion of repeated patterns and messiness coming out of it, the facade design is composed of two layers: the inner layer of rectilinear and operable unitized curtain wall system that functions as the building envelope and the second layer of tilted glass panels that distorts what behind it and reflects the sky and the surroundings. An occupiable balcony takes place between the two layers of the facade and encourages tenants to bring an additional layer of messiness through living with and using the space.

**System description**

**WT-1 A:** *Aluminum, Steel, Glass, and Granite Cladding Unitized Curtain Wall System*

System consists of triple pane insulating glass with low-e coating four-side structural silicone glazed onto unitized frames of thermally broken, custom profile extruded aluminum. Rectangular Carbon steel frame with ¼” thick profile coated in fire-rated intumescent paint and clad under vertical and horizontal aluminum extrusions. Un-glazed spandrel areas are clad with individually supported 1 ½” thick granite panel. Granite rainscreen assembly is backed with integral insulation and galvanized air vapor barrier sheet. System is anchored to building structure at top of concrete slab.

**WT-1 B:** *Aluminum, Steel, Glass, Operable Swing Door, and Granite Cladding. Unitized Curtain Wall System*

System consists of triple pane insulating glass with low-e coating four-side structural silicone glazed onto unitized frames of thermally broken, custom profile extruded aluminum. Rectangular Carbon steel frame with ¼” thick profile coated in fire-rated intumescent paint and clad under vertical and horizontal aluminum extrusions. Thermally broken aluminum swing door that is limited to 90-degree movement and is integrated within the unit’s aluminum frame. Un-glazed spandrel areas are clad with individually supported 1 ½” thick granite panel. Granite rainscreen assembly is backed with integral insulation and galvanized air vapor barrier sheet. System is anchored to building structure at top of concrete slab.

**WT-2 A:** *Aluminum, Steel, Glass, Operable window, and Granite Cladding. Unitized Curtain Wall System*

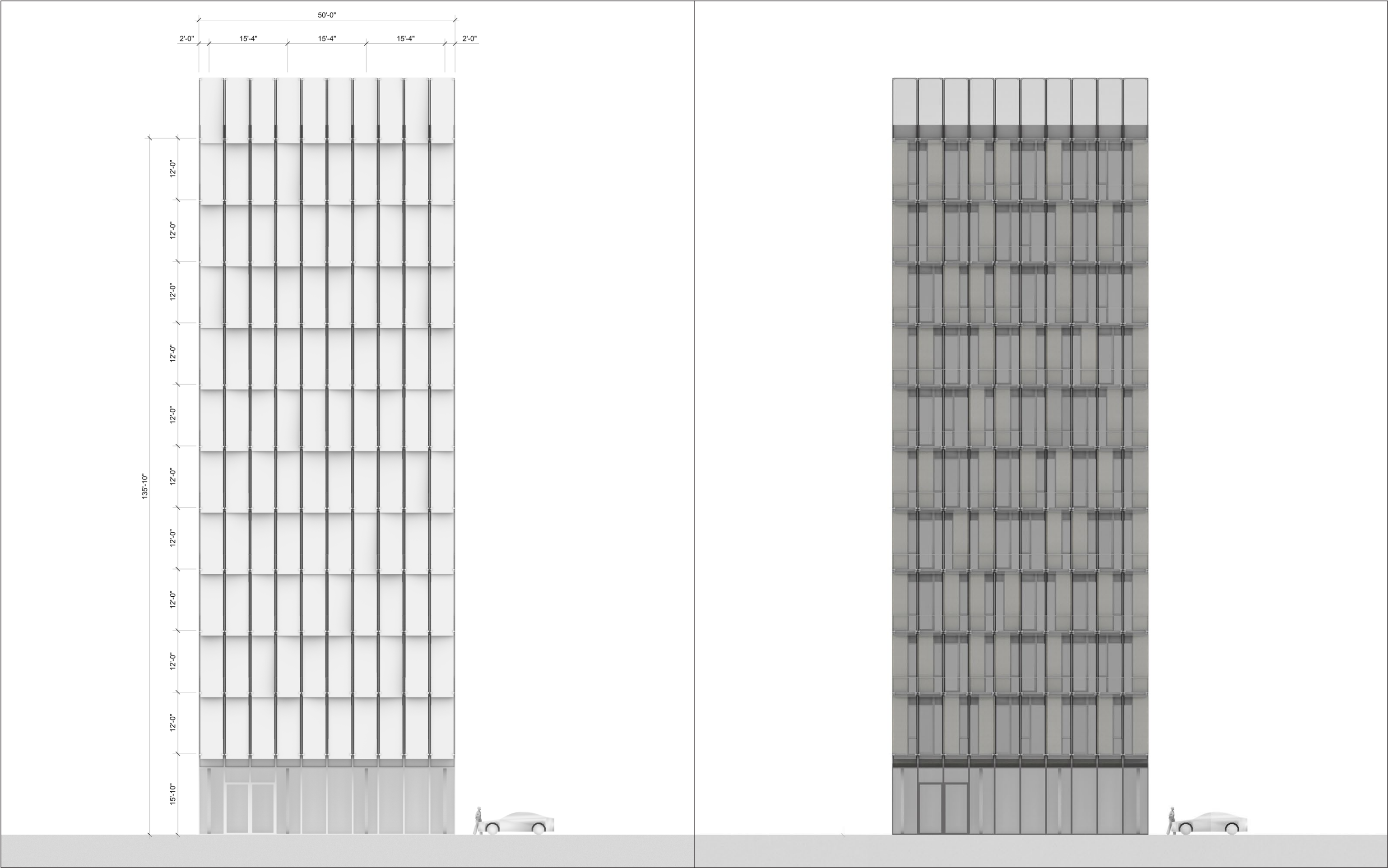
System consists of triple pane insulating glass with low-e coating four-side structural silicone glazed onto unitized frames of thermally broken, custom profile extruded aluminum. Rectangular Carbon steel frame with ¼” thick profile coated in fire-rated intumescent paint and clad under vertical and horizontal aluminum extrusions. Thermally broken aluminum operable awning window that is integrated within the unit’s aluminum frame. System is anchored to building structure at top of concrete slab.

**WT-2 B:** *Aluminum, Steel, Glass, Operable Swing Door, and Granite Cladding. Unitized Curtain Wall System*

System consists of triple pane insulating glass with low-e coating four-side structural silicone glazed onto unitized frames of thermally broken, custom profile extruded aluminum. Rectangular Carbon steel frame with ¼” thick profile coated in fire-rated intumescent paint and clad under vertical and horizontal aluminum extrusions. Thermally broken aluminum swing door that is limited to 90-degree movement and is integrated within the unit’s aluminum frame. System is anchored to building structure at top of concrete slab.

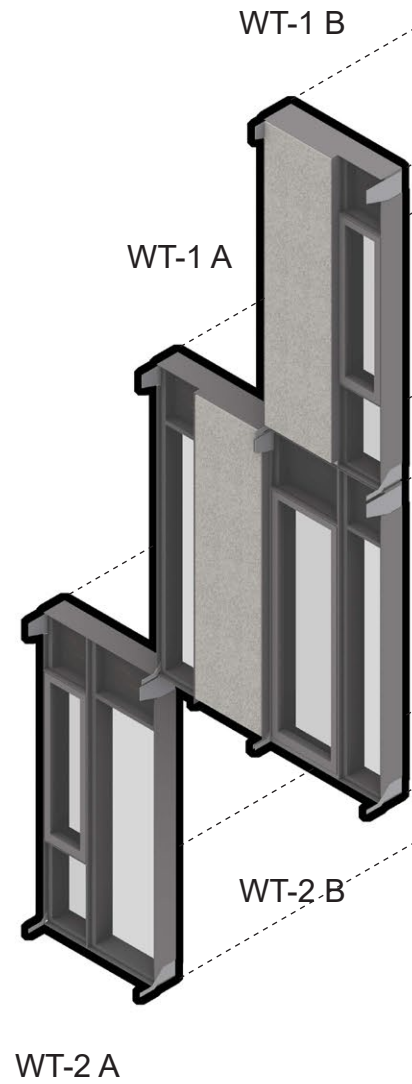
**DS-1 A, B, & C:** *Stainless Steel, Galvanized Steel, Aluminum, and Monolithic Glass. Stick Build System*

System consists of laminated glass with double-sided circular ceramic frits. Glass panels , galvanized walkable metal grating, and stainless steel handrails are attached to WT-1 and WT-2 by angled stainless steel outriggers.

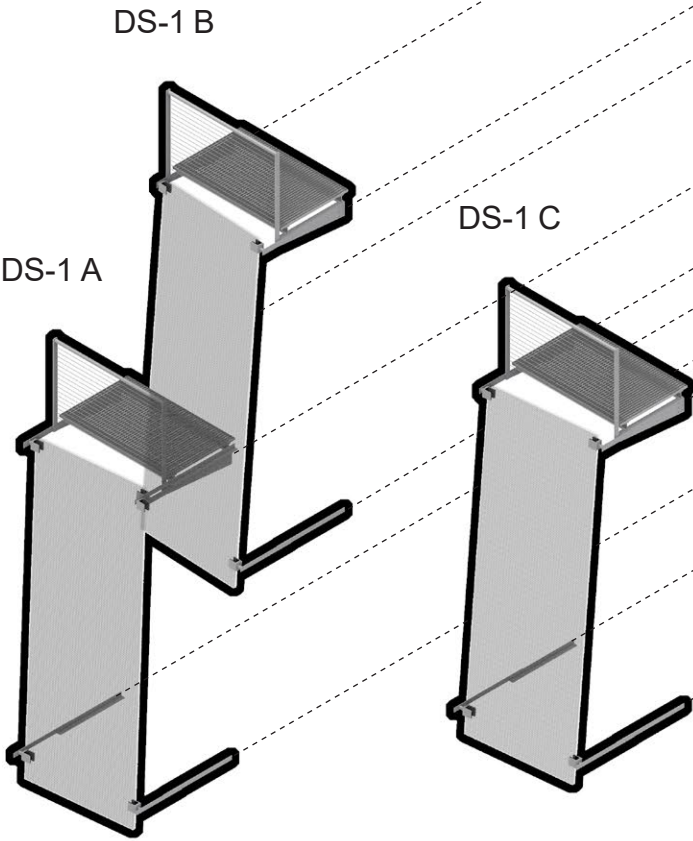


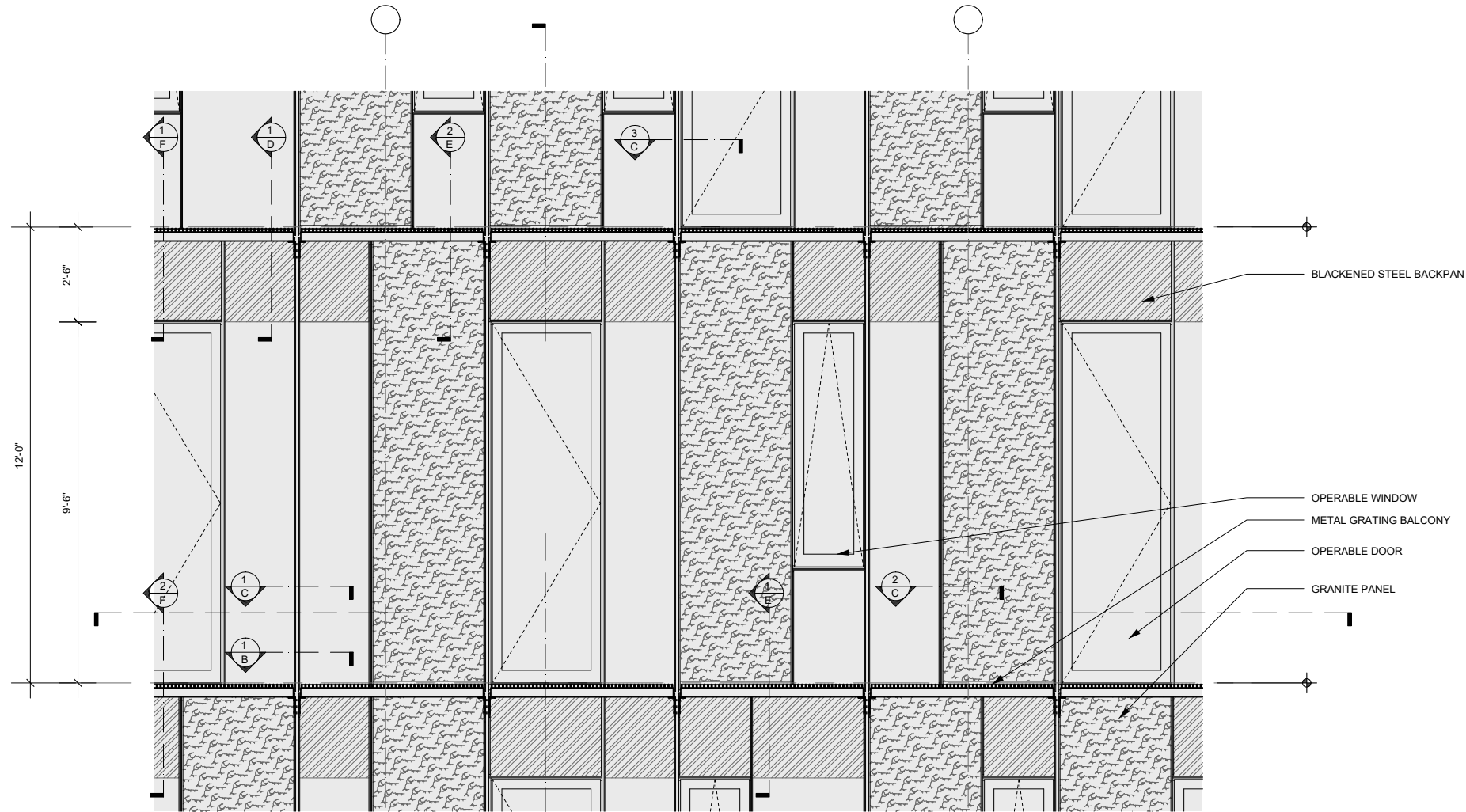


WT-1 & 2 UNITIZED CURTAIN WALL SYSTEM

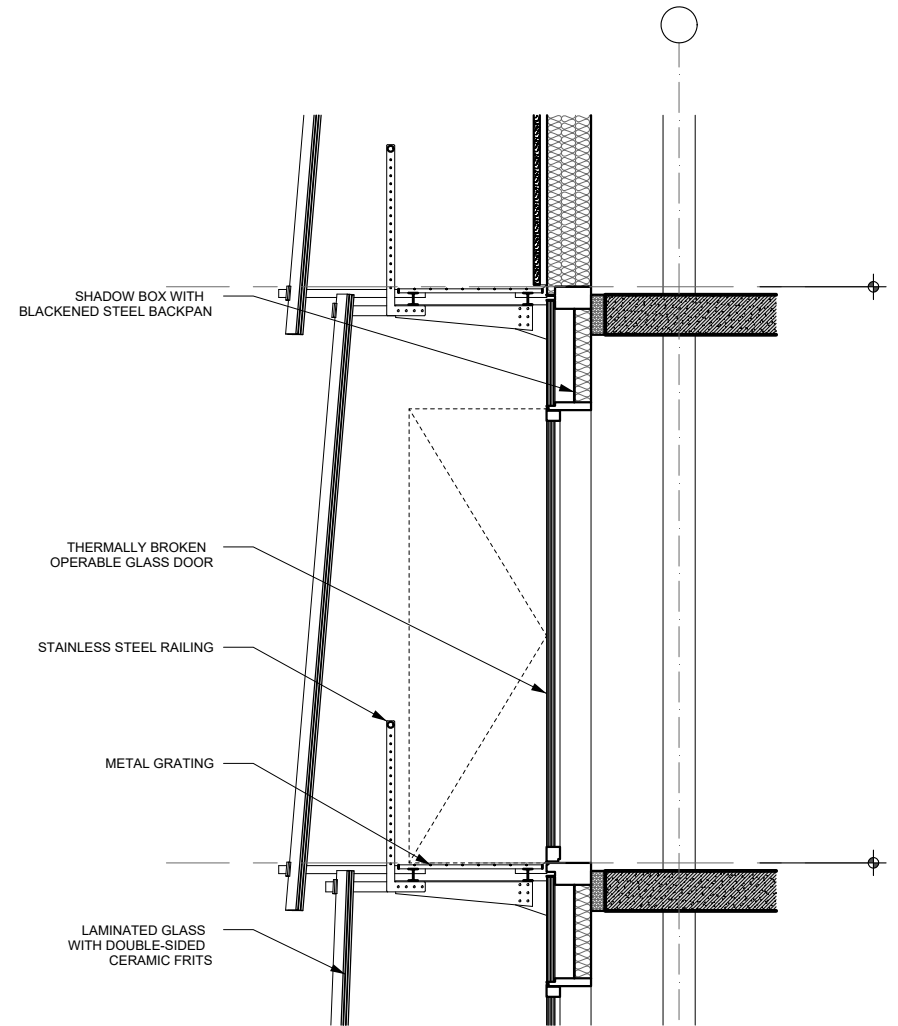


DS-1 DOUBLE SKIN FACADE SYSTEM

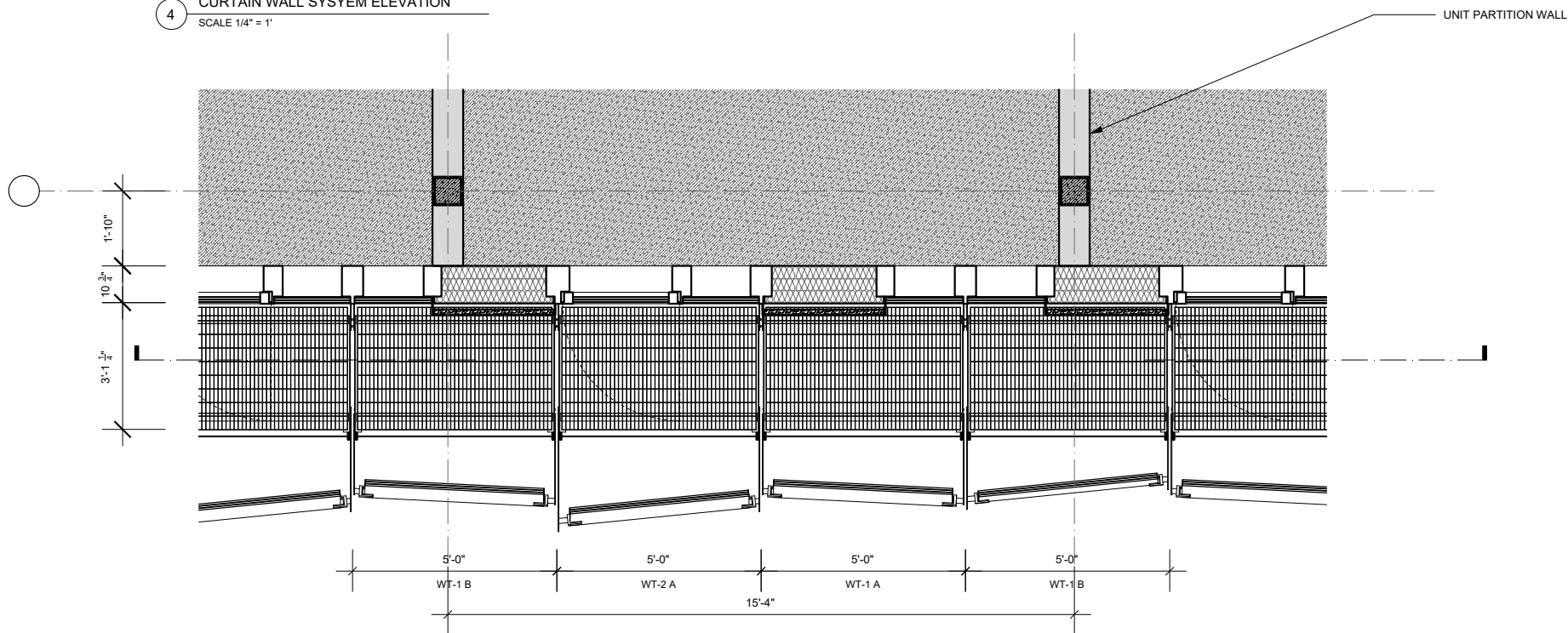




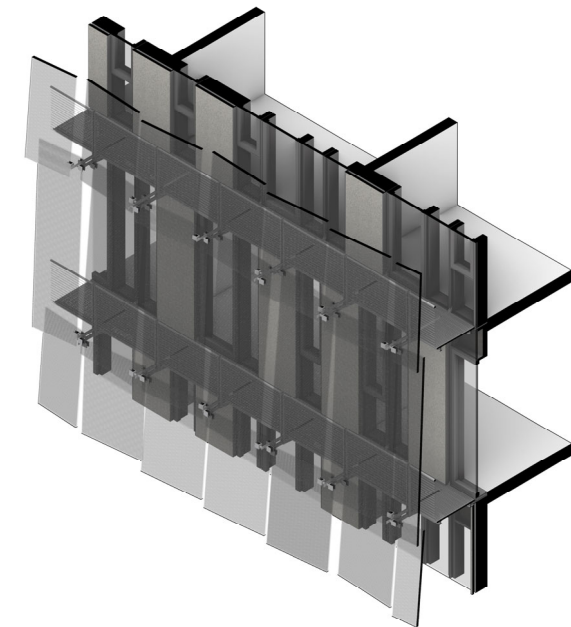
4 CURTAIN WALL SYSEY ELEVATION  
SCALE 1/4" = 1'



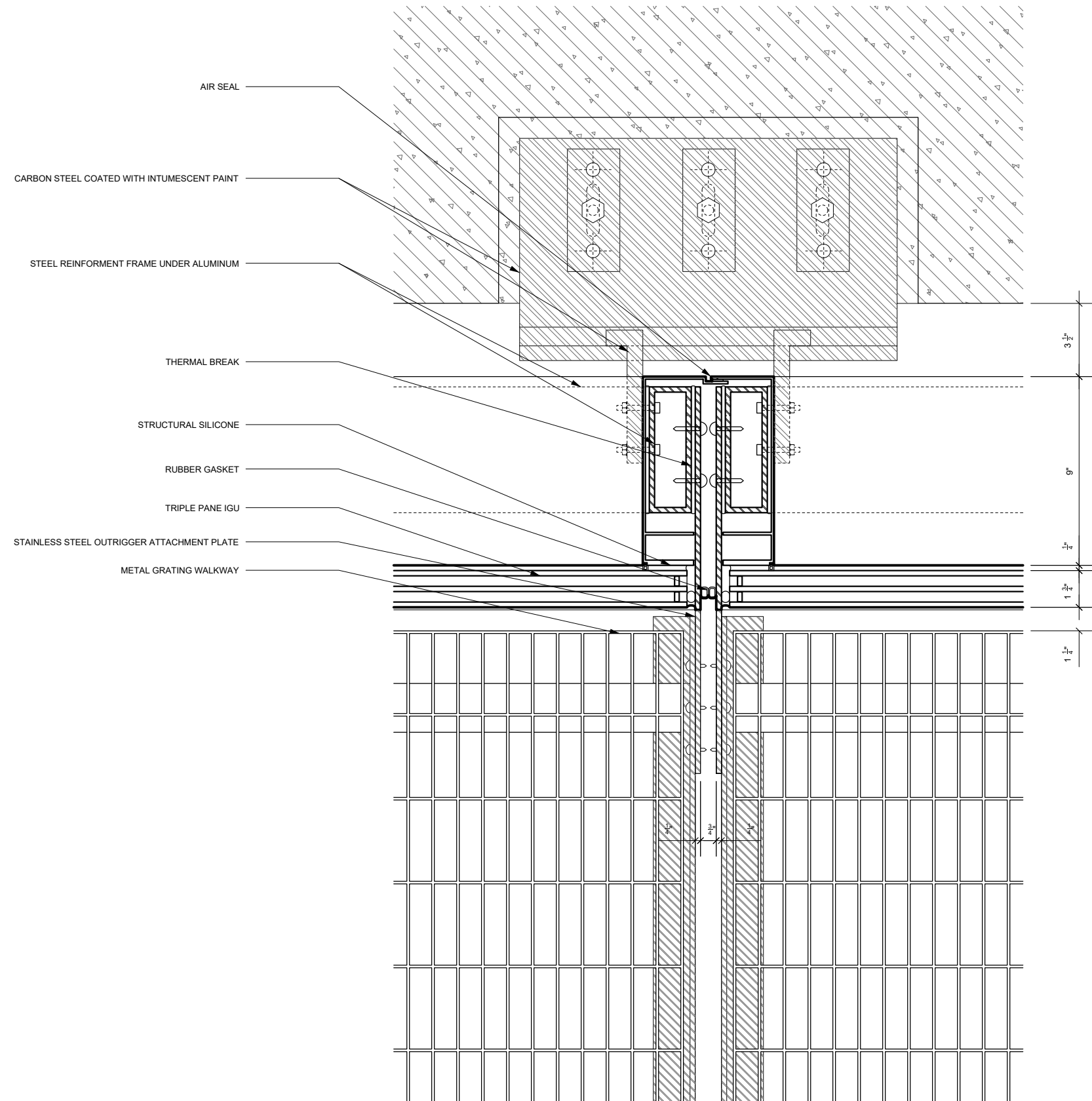
3 CURTAIN WALL SYSEY SECTION  
SCALE 1/4" = 1'



2 CURTAIN WALL SYSEY PLAN  
SCALE 1/4" = 1'

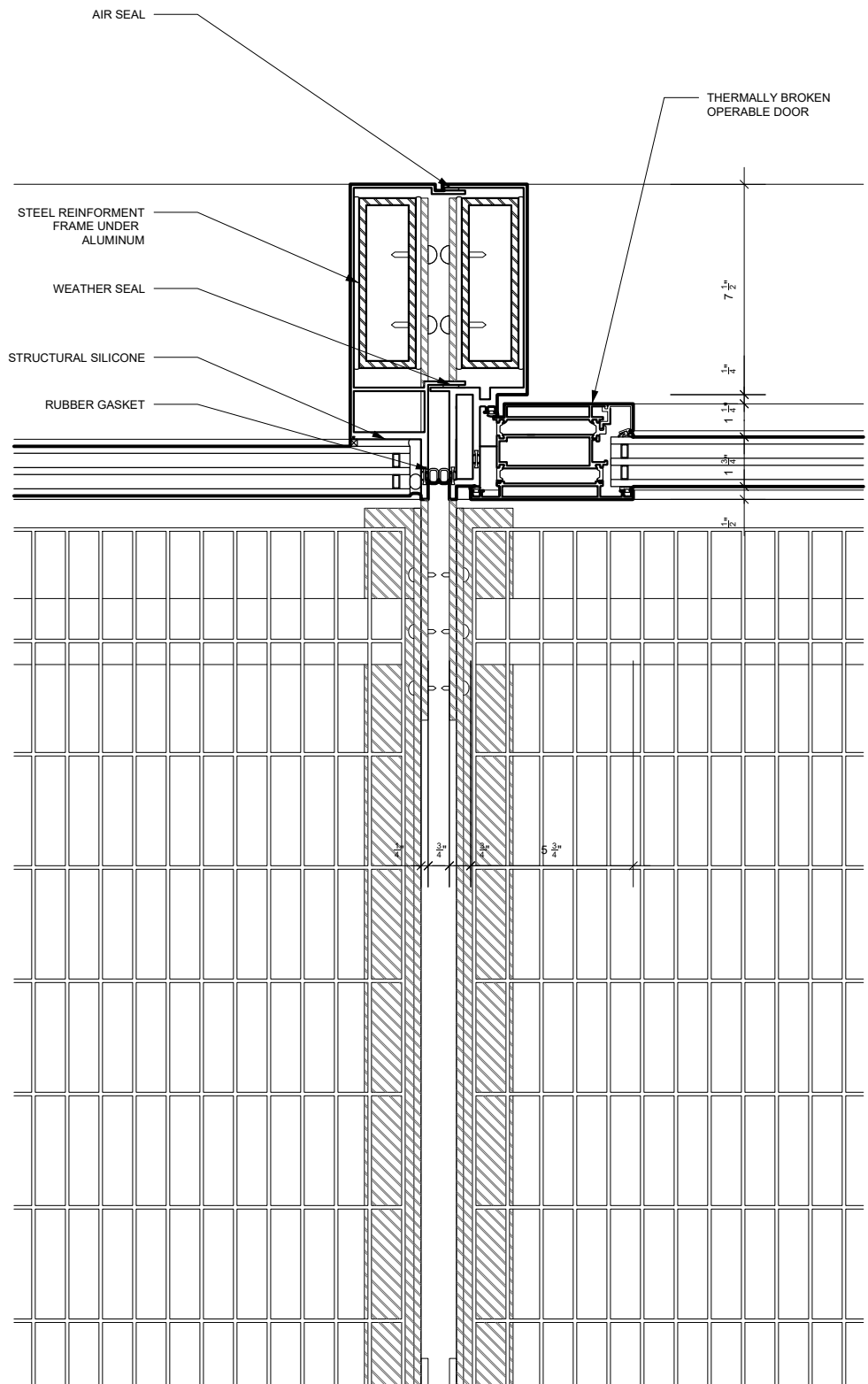


1 CURTAIN WALL SYSEY AXON

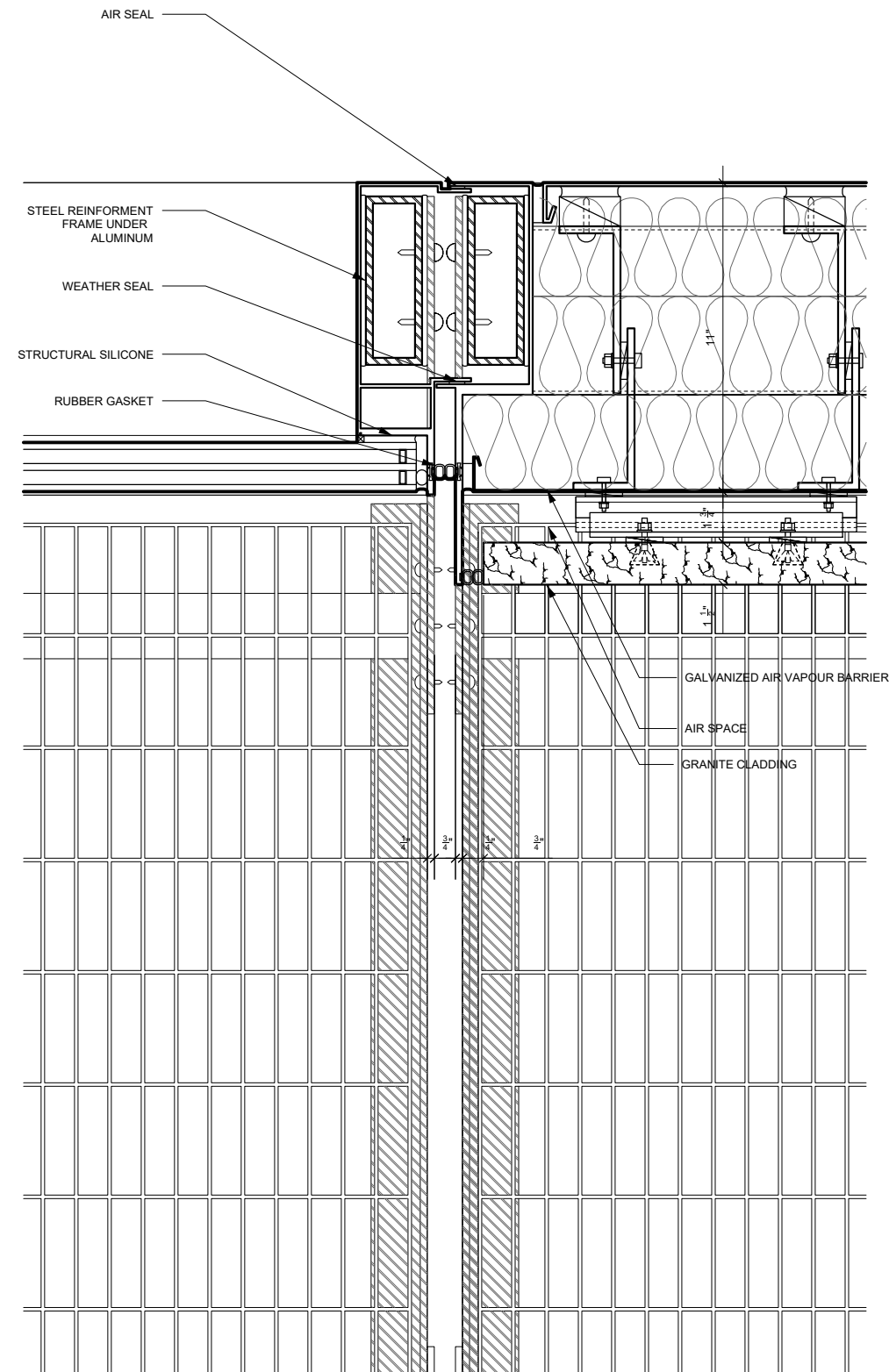


1 TYPICAL SYSTEM MULLION DETAIL AT OUTRIGGER ATTACHMENT POINT  
SCALE 6" = 1'

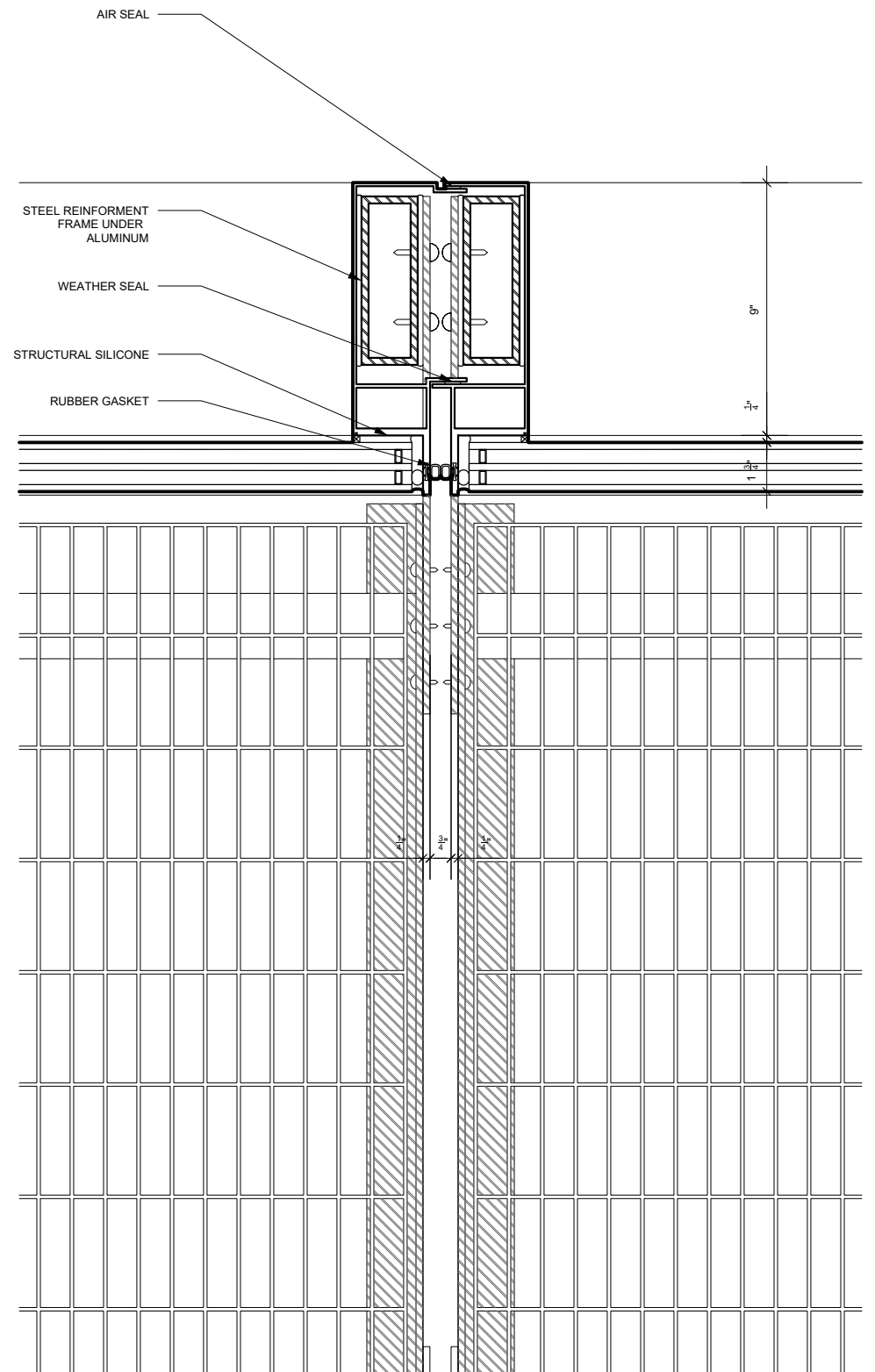




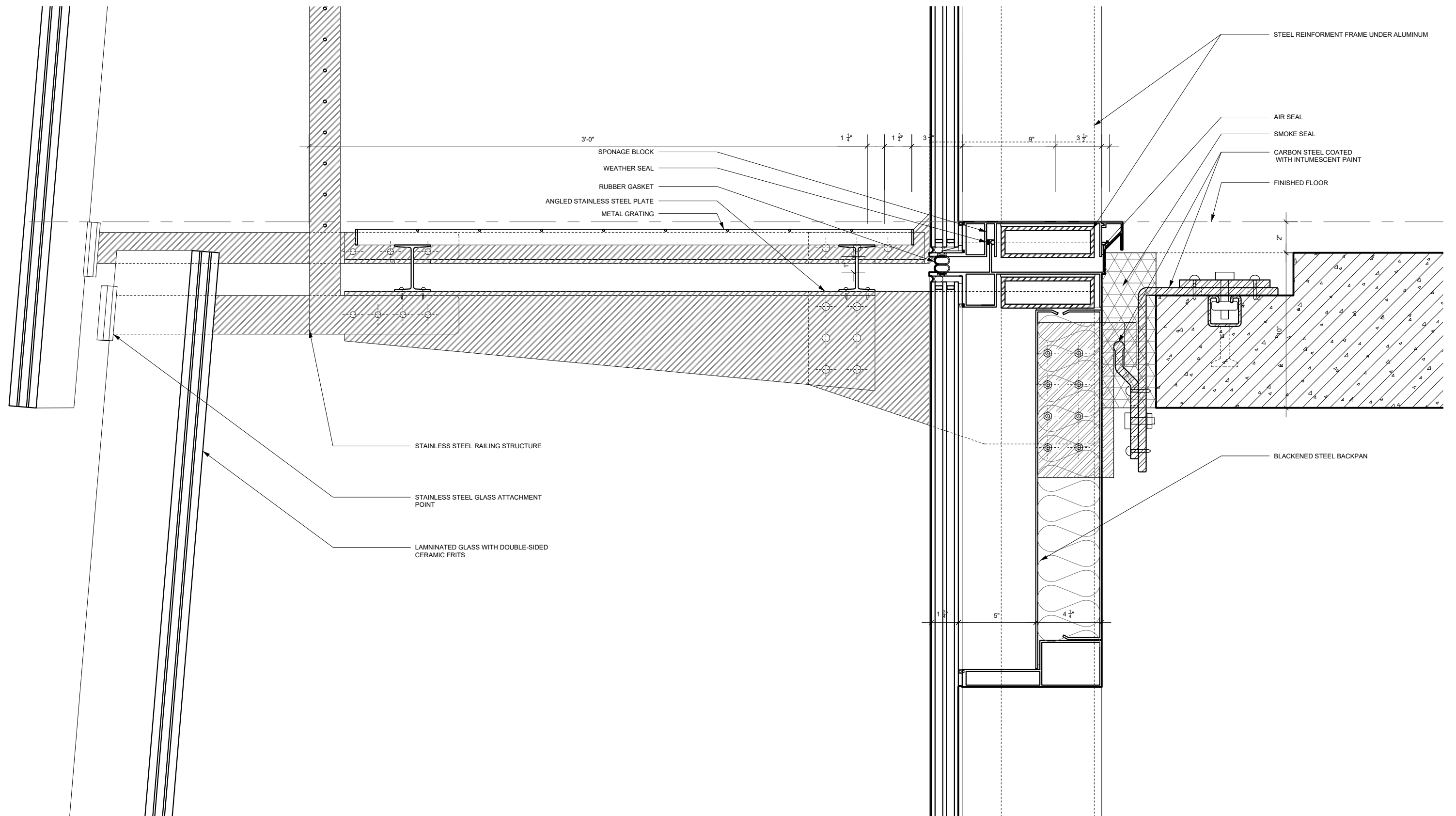
3 TYPICAL MULLION DETAIL AT OPERABLE DOOR  
SCALE 6" = 1'



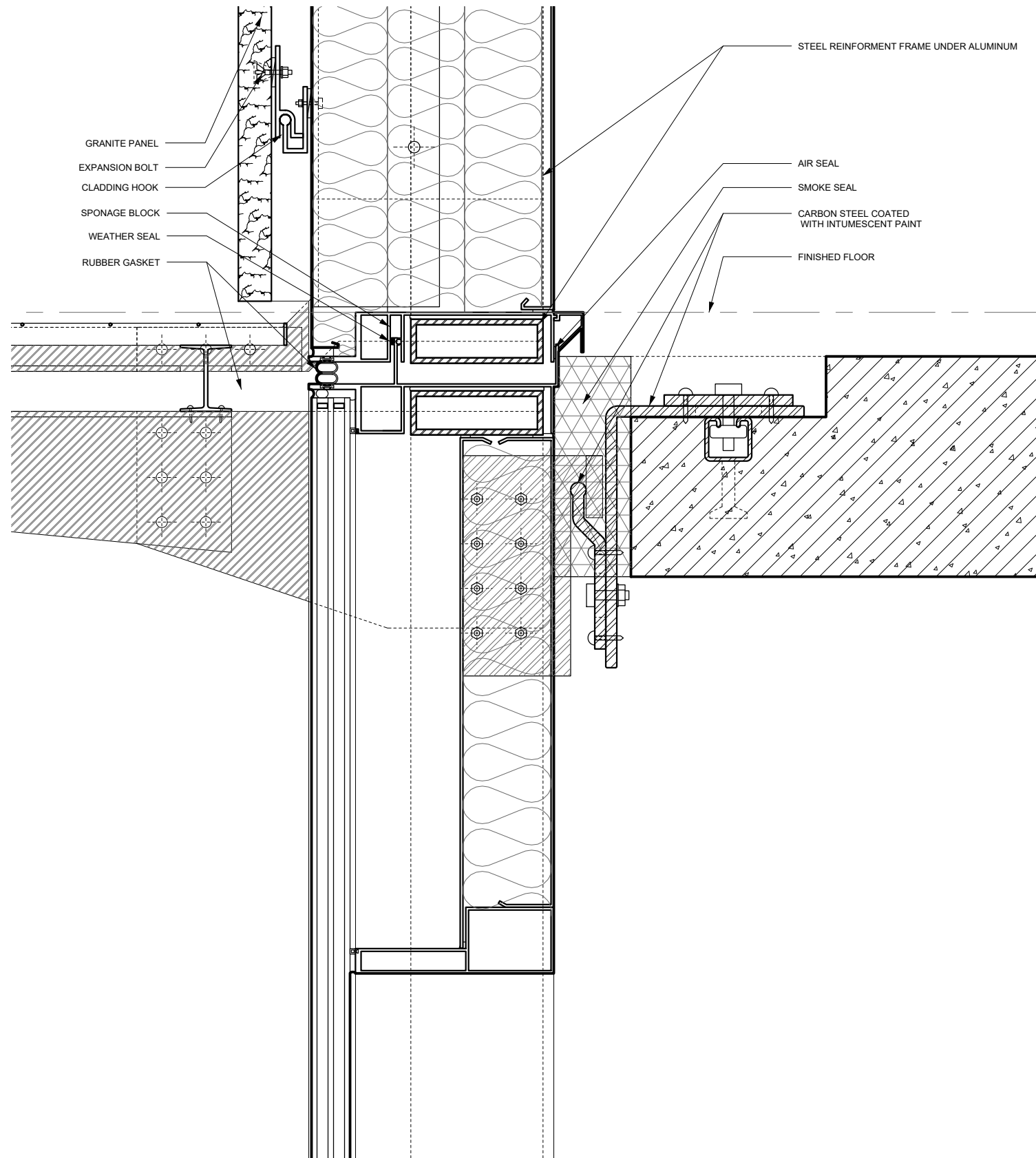
2 TYPICAL MULLION DETAIL AT STONE CLADDING  
SCALE 6" = 1'



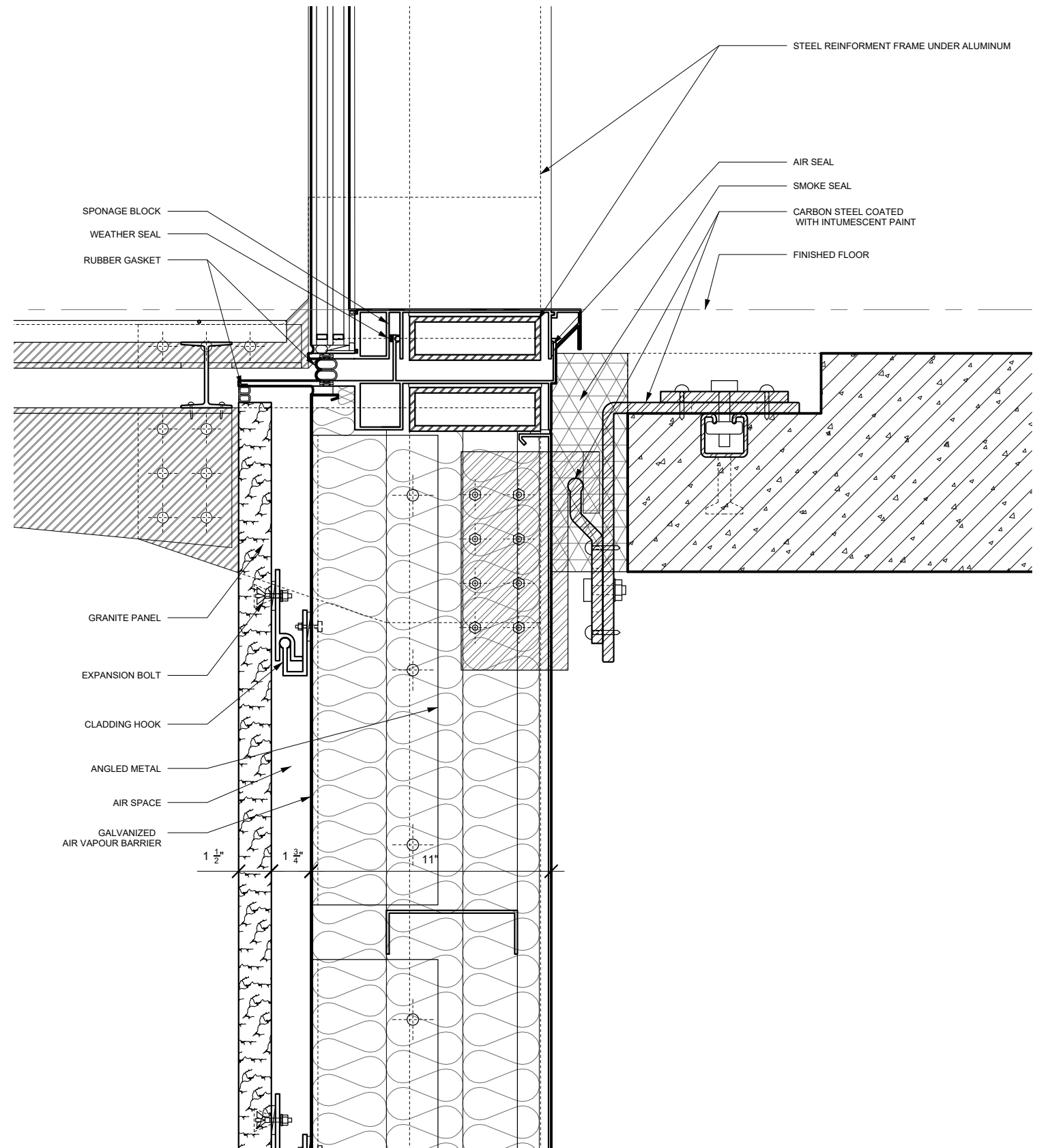
1 TYPICAL MULLION DETAIL AT GLAZING  
SCALE 6" = 1'



1 TYPICAL BALCONY DETAIL  
SCALE 6" = 1'

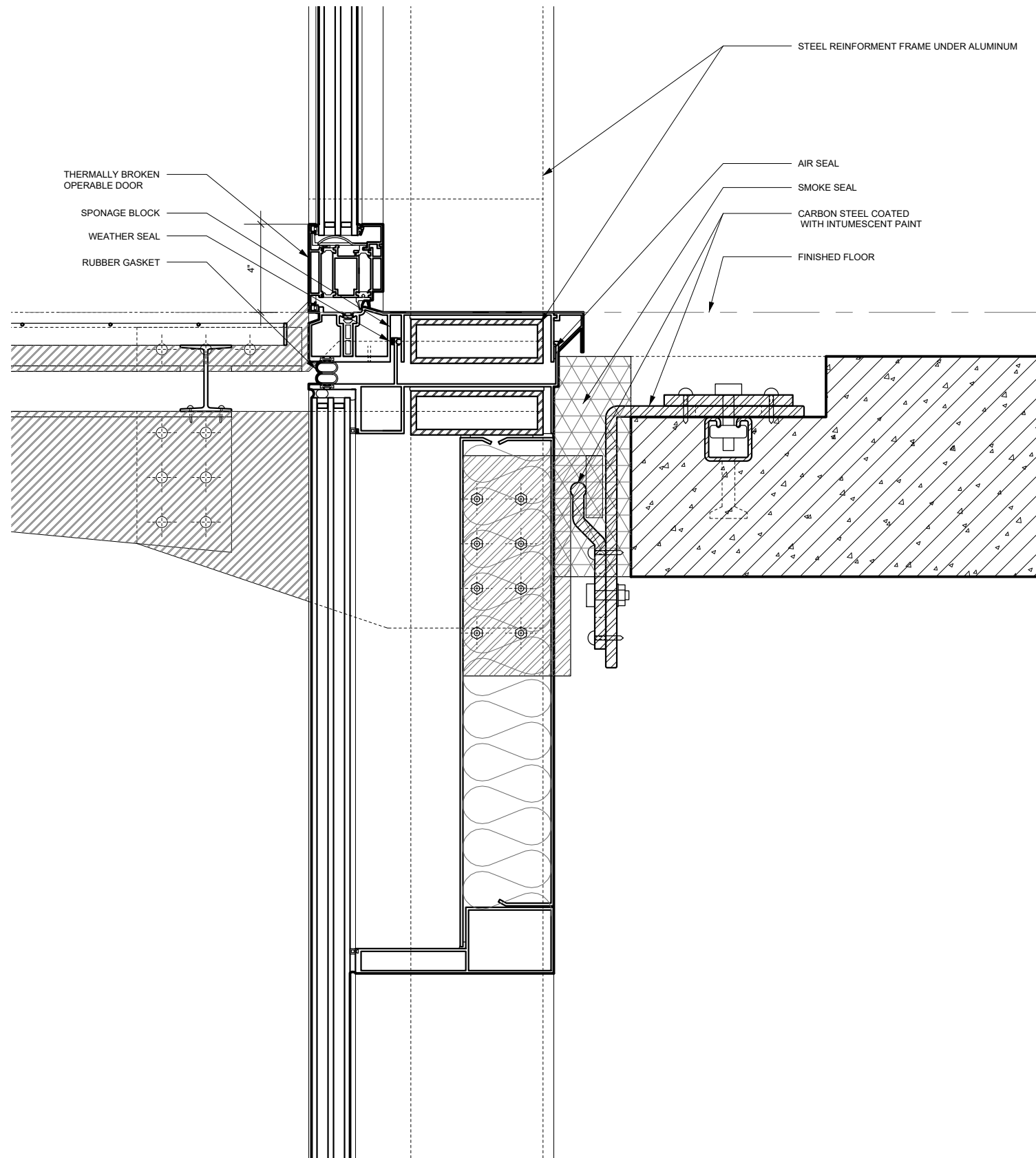


2 TYPICAL SYSTEM STONE CLADDING BOTTOM END DETAIL  
SCALE 6" = 1'

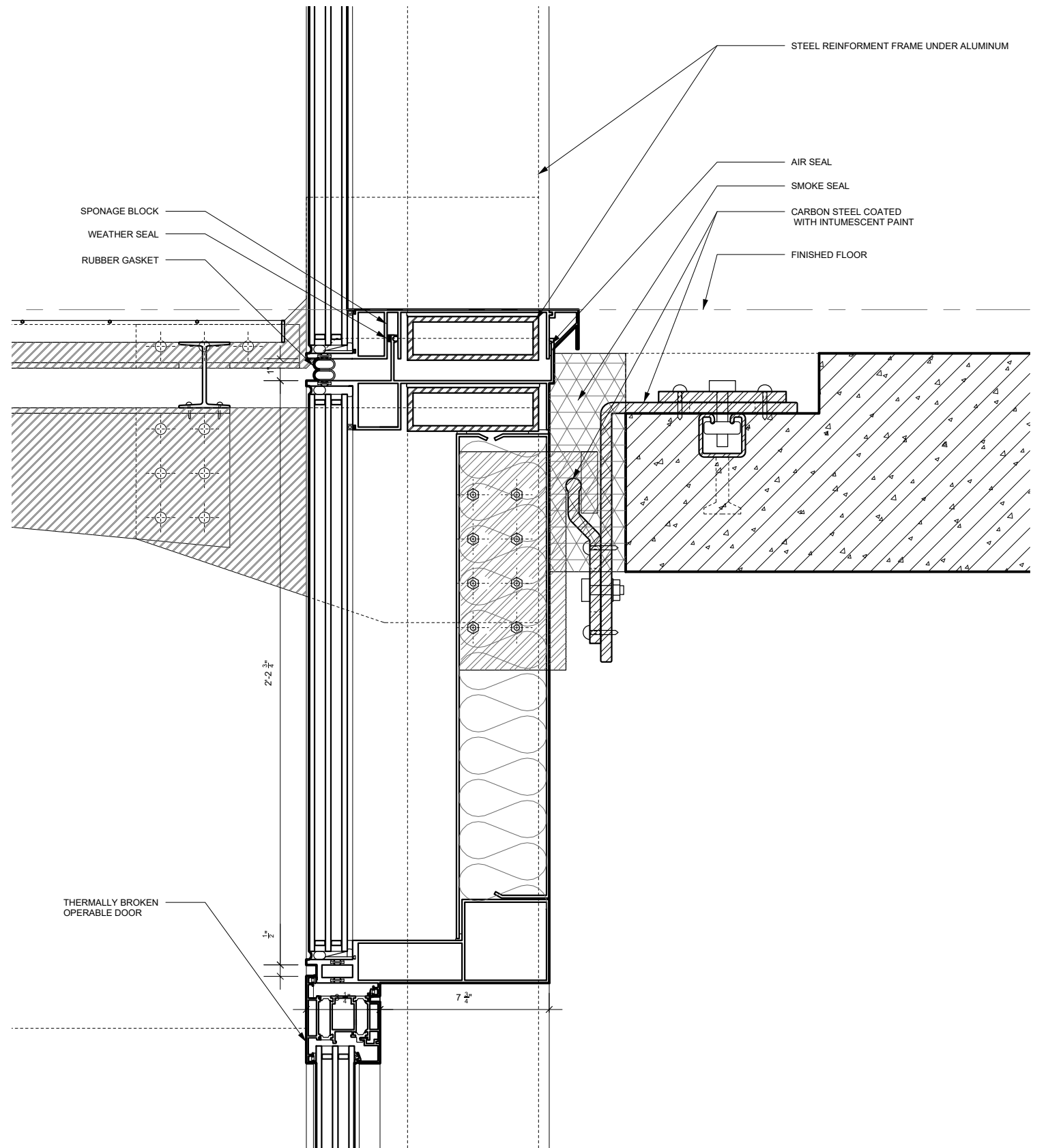


1 TYPICAL SYSTEM STONE CLADDING TOP END DETAIL  
SCALE 6" = 1'





2 TYPICAL SYSTEM OPERABLE DOOR BOTTOM END DETAIL  
SCALE 6" = 1'



1 TYPICAL SYSTEM OPERABLE DOOR TOP END DETAIL  
SCALE 6" = 1'



