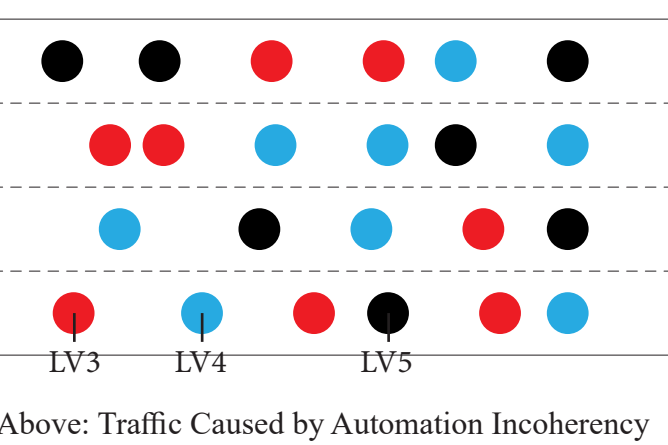
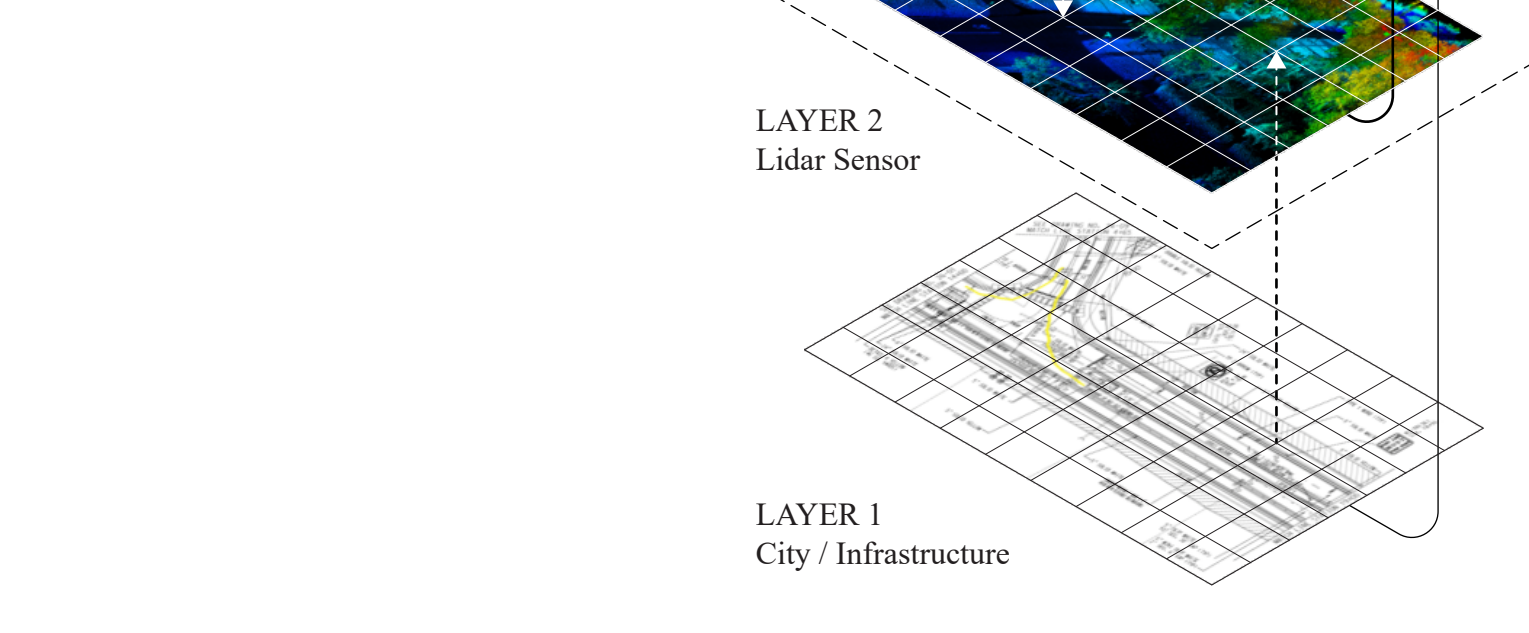


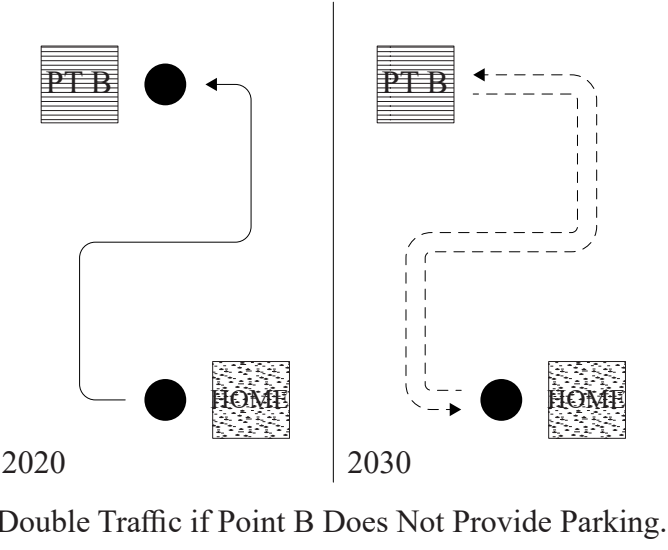
1. A.I. Hegemony

Although Elon Musk once said during a speech “whoever relies on Lidar (to approach full automation) is doomed”, in my opinion the lvl 5 automation will be combining multi-layer data input (Lidar, Machine Vision, Infrastructural Network, etc.) to understand the full image.

API (Application Programming Interface) is probably more important than AI.



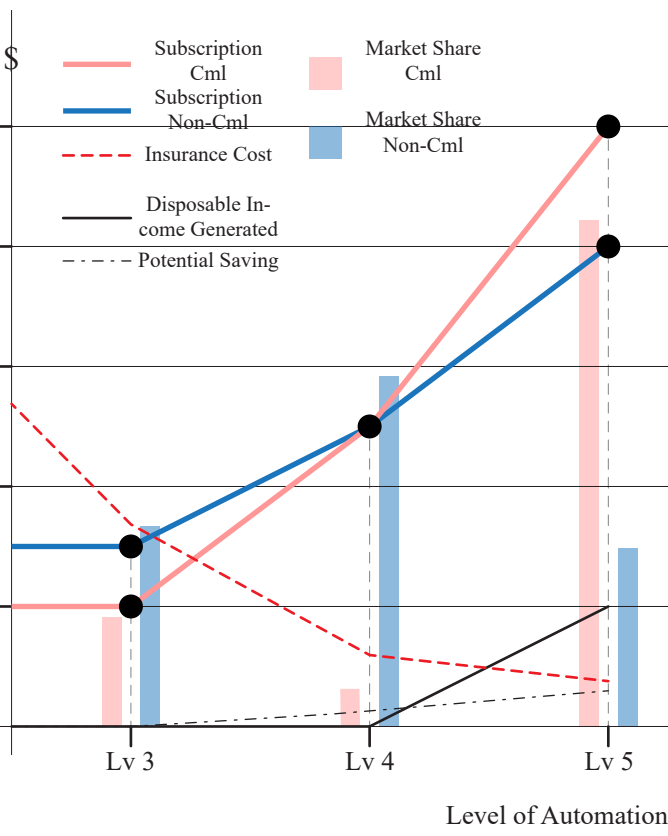
Above: Traffic Caused by Automation Incoherency



3. Policy

Hybridity may also apply to regulation. Human attendance may be omitted depend on hierarchy of roads. For example, freeway is less complex and capricious compare to local route, hence is safe for lower level automation to perform without human presence.

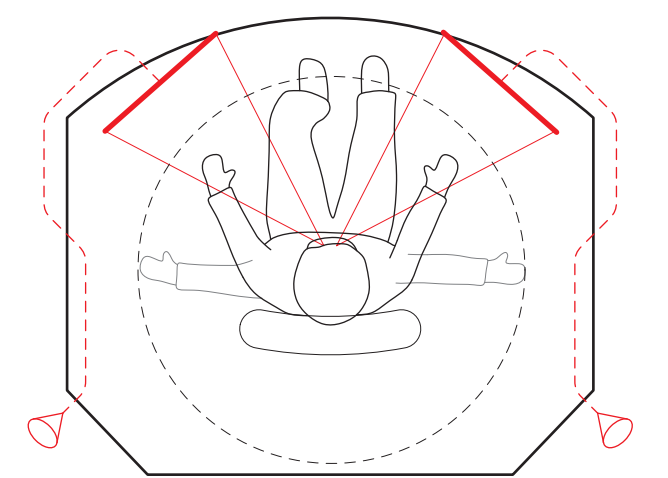
Entering and exiting the freeway is comparable to take off and landing of an airplane.



5. Inside Out

Jacque Tati's Play Time - a scene showing the protagonist asked to be waited in the lobby. What strikes is the cut that contrast the tranquil interior and buzzing exterior (mostly from automobile). The glass panel erased the barrier between int and ext visually, but reinforced it acoustically.

Autopilot together have turned this relationship inside out. In a highway traffic jam, acoustic barrier become dispensable, as outside is as quiet as interior. AI allowed us to shift attention away from immediate surroundings to the point that drivers are seeing the asphalt through interface more than transparent, brittle, tangible surface.



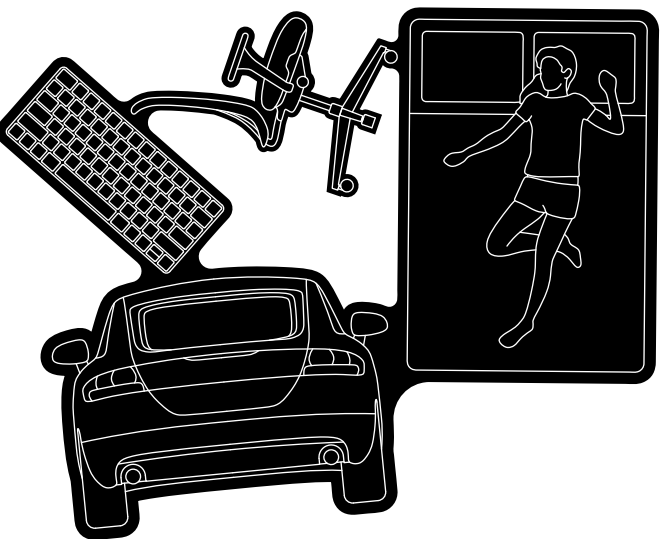
7. UPDATE (Title)

Update, in other words, constant adaptation, is necessary amidst fluid, erratic environment full of dynamic forces. Yet architecture at its core is nothing but against this.

8. Anywhere, Everywhere - What We Talk About When We Talk About Charging Station

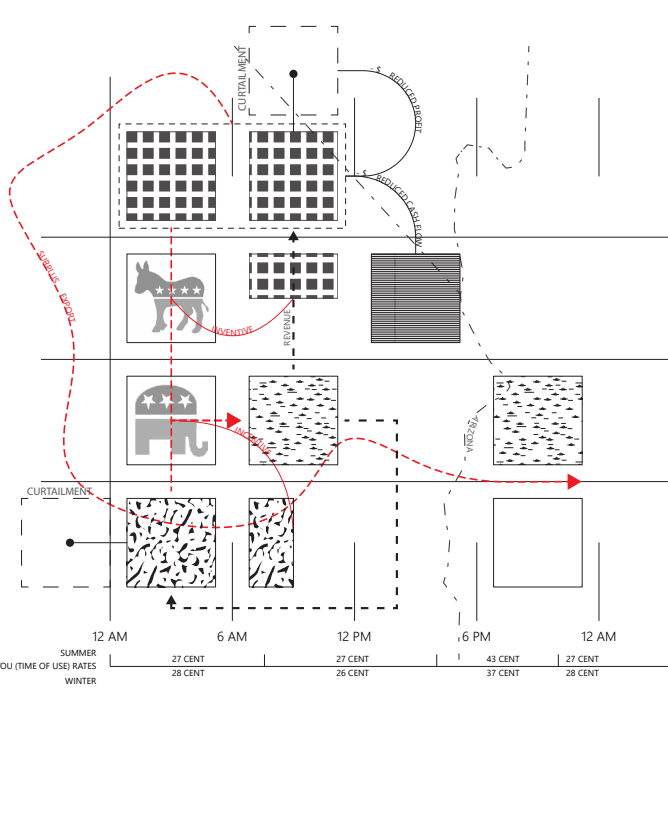
Gas stations carry the quality of being ritual, to which fueling a vehicle through a pump cannot be done without being in the place. Gas refined product from crude oil that is owned by highly capitalized conglomerates. In that sense, gas is not only physical, but also original.

Electric grid, on the other hand, as the outcome of mass production, is ubiquitous. The notion of original/aura disappears as charging can literally happen anytime anywhere along the grid. It is not tied to an "original." The flow of electricity is as, if not more important than that of water.



10. North Bound

Climate change is covertly reshaping the global trade. A melting arctic is already opening up routes for cruises and will certainly impose a geopolitical paradigm shift. But why does it matter to the trucking industry? Traveling through Canada's arctic coastline will likely reduce U.S. cross country long-haul trucking between east and west coast, by discouraging company choosing Marine-Ground option for a cargo ship departing from Northern China or Korea.



2. Future Traffic

The scenario is based on the premises of having a hodgepodge of level 3, 4, and 5 Automation sharing the same road. It is known that level 3 automation (conditional self driving with driver) is indeed dangerous and prone to causing accident, as it requires human constantly monitor the system and be able to take control of it at any time.

It is even possible that Level 0 (no automation) cars still exists on the road.

Traffic may still be prevalent due to the incoherence of automation level.



4. Once a Subscriber, Always a Subscriber

Innovation is continuous. It exists in the smooth space



6. Spaciously Claustrophobic

To some extent, TESLA's Semi is quite impersonal. It's as sleek and high tech as a jet cockpit, but by centering the seat they seal off driver's direct contact with "out side world" - all interaction happens on interface - two screens.

As if it is really an airplane hovering 30,000 ft above ground, as if the air outside is too cold to touch.

UPDATE

INT./EXT. COMPUTER VISION

A screen showing the system frantically detecting and labeling everything surrounds the semi truck.

SYSTEM (AI)
-- Engage. Engage. Engage --

Balck Screen (3s), CUT TO:

INT. TESLA SEMI - I-15 - BORDER OF CALIFORNIA AND NEVADA - DAY

CONTINUE WITH SYSTEM ALERT

PAUL'S (DRIVER/PROTAGONIST) POV

PAUL Startled. Awoken by the system alert as the visual attention tracker failed to detect conscious human being's attendance, only to realize that he is still stuck in the same traffic from half an hour ago.

PAUL
Christ, why did you wake me up? We are still on the highway!

SYSTEM (AI)
We are within 2 miles from Exit(XXX). Nevada State Law requires human attendance in all vehicles while entering and exiting freeway, with the exception applied to vehicles capable of and subscribed to Level 5 Autopilot Package. And it's under our UPDATA's policy that --

PAUL
(irritated, interrupting)
-- Alright, Alright, Stop.

PAUL lowers the window. Even with all the cars piled up in a 3 lanes freeway, you can still discern the sound of deer strolling across wildlife overpass miles ahead. It's a muted hectic bustle.

If it's during the old days, PAUL would lean on the rubber trim. But since the one seater took over the market, truck drivers are constrained by the emptiness around them.

Paul looks into the side mirror on screen. He can tell from the opaque electrochromic glass that nearly a third of the vehicles around him are Lv.5. They are either empty or closed off for privacy reasons.

Some people like to leave the sunroof untinted, like the one to the left of PAUL. Clearly they forget that trucks can be the "highrise" amidst the endless horizontality.

ZOOM IN TO SIDE MIRROR UNTIL FULL SCREEN

EXT. CONTINUED

Camera slowly cruising back, traveling through traffic toward the end of the trailer.

Camera turns and faces the blue logo printed on the white trailer door, which is supposed to say UPDATA. A white plastic bag caught by the top hinge of the right hand door covered a portion of letter A, which is sufficient to trick AI to perceive the word as "UPDATE".

SUPERIMPOSE:
UPDATE (#Film Title)

FADE TO:

INT. SEMI TRUCK - FREEWAY EXIT - DAY

PAUL'S POV

OVER THE LIVE FEED ON SCREEN

ANCHOR
-- The Senate has voted to pass the Auto-Drive Bill over the weekend in a vote of 78 yays to 22 nays in response to the tragic happened at the Coachella Valley Music and Art Festival last October, meaning that companies will soon be required to hire attending drivers on board of the vehicles even with the subscription to full automation package --

-- And it is anticipated that most of the company will downgrade their package to level 4 or even level 3.

Intel and Tesla's share price has slumped 5% and 9% respectively during the market open, as over 80% of premium package subscribers are commercial clients --

EXT. STATION - DAY

Close up against the bottom edge of the right hand door. Door opened, and closed. Paul walked away. The casted aluminum charging post is now blinking in red.

MATCH CUT TO:

A water bottle under a faucet.

EXT. RESERVOIR - CONT'D

Camera centers on a glass capsule that rooms variegated tropical plants. A transparent OLED display embedded within the glass panel wrapped the cell with Ads hovering around the bright yellow shower curtain peaks out of luscious vegetation. Ads:

- Grid decentralization is stripping away your job -
- Cruise tour around northern Canada and the Arctic -
- Save your money, save our planet -

Paul stepped into the room without a glimpse to the screen. As he closed the door behind, the electrochromic glass panel switched to translucent grey tone.

CUT TO:

INT. SHOWER CELL - CONT'D

A yellow vinyl curtain amidst vegetation. Background plays the same radio channel Paul listens to on the truck.

CUT TO:

EXT/INT. DINER - VENDING MACHINE - DAY

Close up shot at Cricket Cereal, the only item left on a seemingly endless powder coated shelf packed with yellow dividers as the camera gradually zooms out.

Paul rolls up the shelves, arised hygroscopic planters incubating cabbages and baby tomatoes under grow lights.

It's a vending wall protruding out of arid soil. The dining area located right behind it, which is sheltered along with cacti and succulents by merely a 24 mm thick corrugated metal sheet.

Paul is sitting on a stool with a stainless steel seat capped rammed-earth base support underneath, eavesdropping the conversation between two guys from afar.

MALE
So how was your interview? Any news?

FEMALE
Not a word since that personality test.

MALE
Personality Test? Can't believe they are still doing that, should've made it illegal a decade ago.

FEMALE
How about you? Weren't you in construction? Canada is looking for people, they are scrambling to build new ports and cities along the arctic.

MALE
Ugh. I can't imagine looking at the midnight sun for three months straight when the weather is warm.

CUT TO:

EXT. STATION - DAY

Camera rolls toward left. Passing a mobile/nomad community consists of recreational vehicles and oversized vans serves as restaurants and "storefronts."

Camera stops in front of Paul's semi truck.

MUSIC FADE IN --

TOP / AERIAL VIEW

Camera zooms out, unveils a grid formed by charging posts adjacent to a solar farm.

Parking line markers and diesel trucks pop up on the ground. As the camera keeps zooming out, it appears to be the graphic on Paul's T-Shirt.

CUT TO:

EXT. FREEWAY - NIGHT

FRONTAL VIEW

Truck cruising on freeway with headlights on. Vehicles overtakes once in a while, varying in speed.

PAUL disappeared from the cockpit.

Cockpit disappeared from the tractor.

FADE TO BLACK.

CLOSING CREDITS.

THE END

