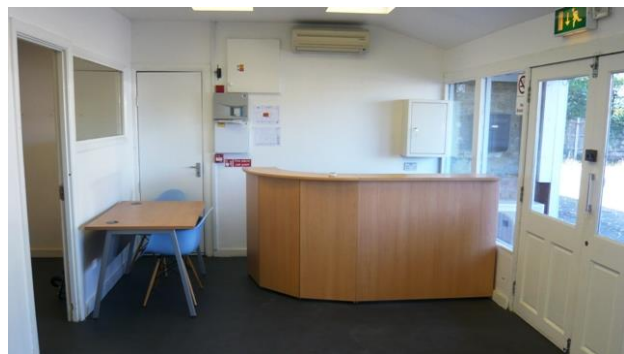


## Airpets, Spout Lane North, Heathrow TW19 6BW



## TO LET

- Self-contained offices
- 860 sq ft (79.9 sq m)
- Close to Terminal 5 and M25
- 5 allocated car parking spaces
- Additional parking available

**Tel: 020 8707 3030**

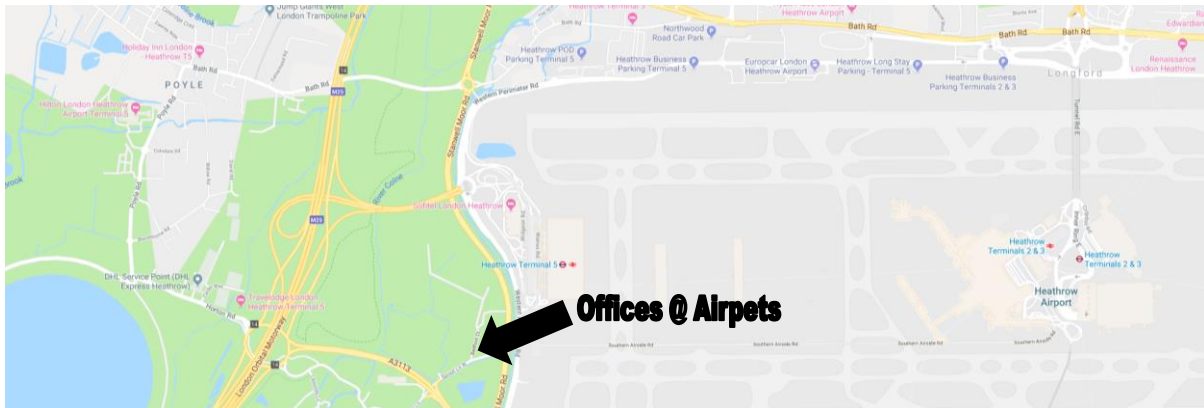
**[www.desouza.co.uk](http://www.desouza.co.uk)**

**Heathrow Office: 3 Maple Grove Business Centre, Lawrence Road, Hounslow TW4 6DR**

These details are intended as a guide only and must not be relied upon as statements of fact. They are not intended to constitute, nor constitute part of, an offer or contract. All prices and rents quoted are exclusive of VAT unless otherwise stated.

## Location

The offices are located on the Airpets site close to Terminal 5 and M25 (J14).



## Description

The property comprises a single storey self-contained office building with comfort cooling and allocated car parking immediately outside. It provides a total of 860 sq ft (net internal area).

## Amenities

- Close to Heathrow Airport
- Fast access to M25
- Self-contained building
- Comfort cooling
- Kitchen
- 5 allocated car parking spaces

## Terms

Available on a new lease direct with the Landlord for a term to be agreed.  
Rent - £17,500 per annum plus VAT. Business rates are included in the rent.

## Contact

**Paul Flannery**

[paulf@desouza.co.uk](mailto:paulf@desouza.co.uk)

**020 8707 3035**

**07946 422920**