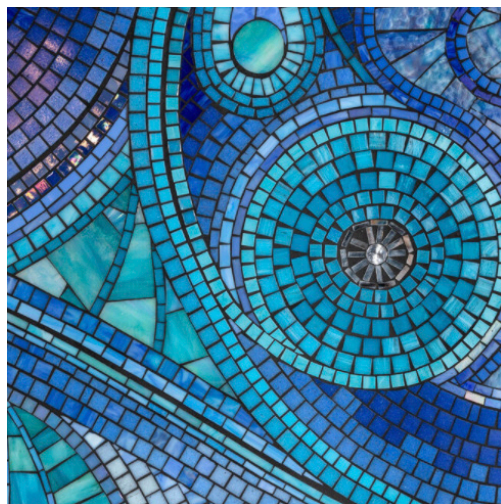
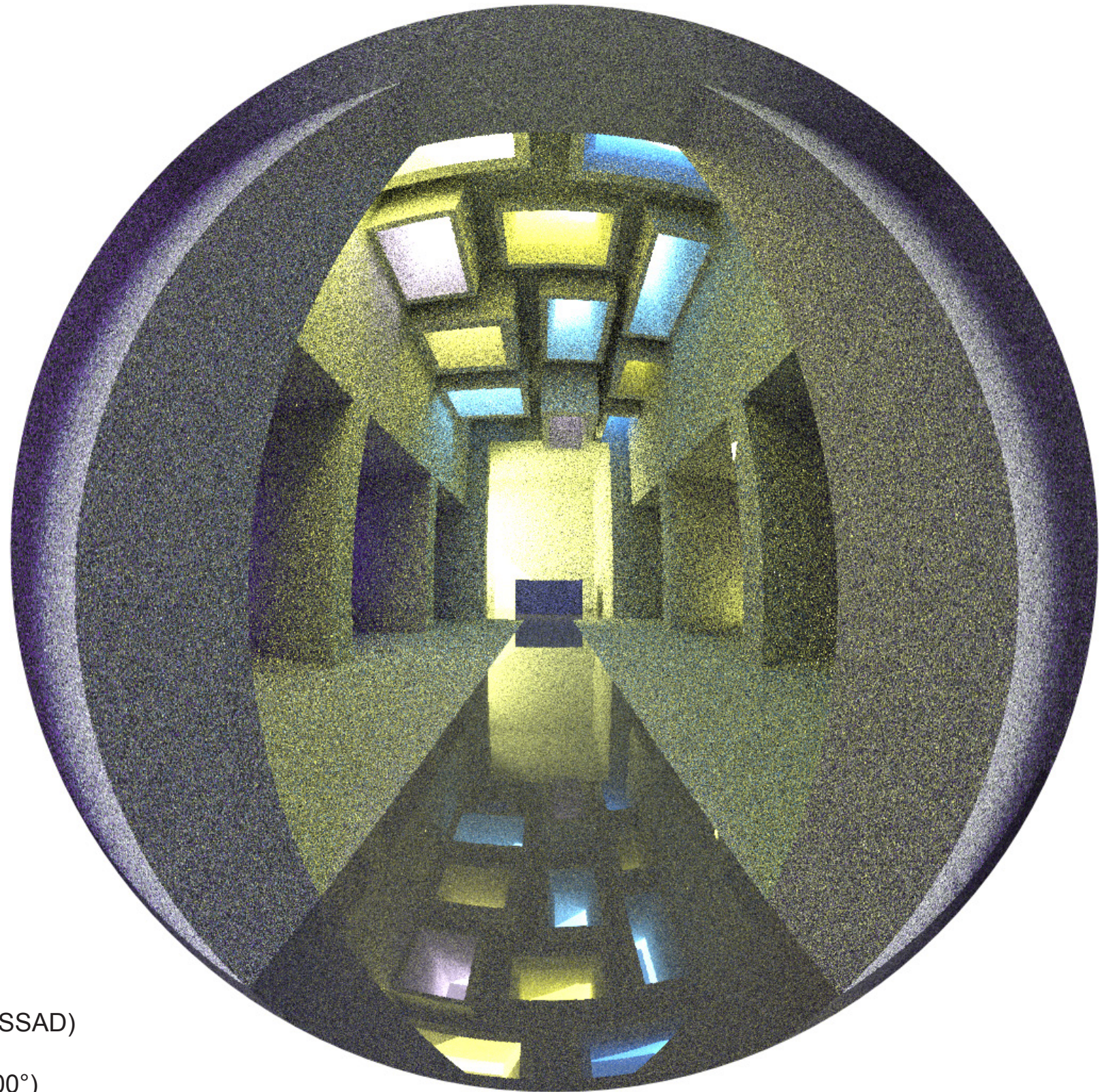


# ATMOSPHERIC SILENCE & CANALIZATION

*Inspired by  
Vincent van Gogh's Starry Night  
& Mosaic Art*

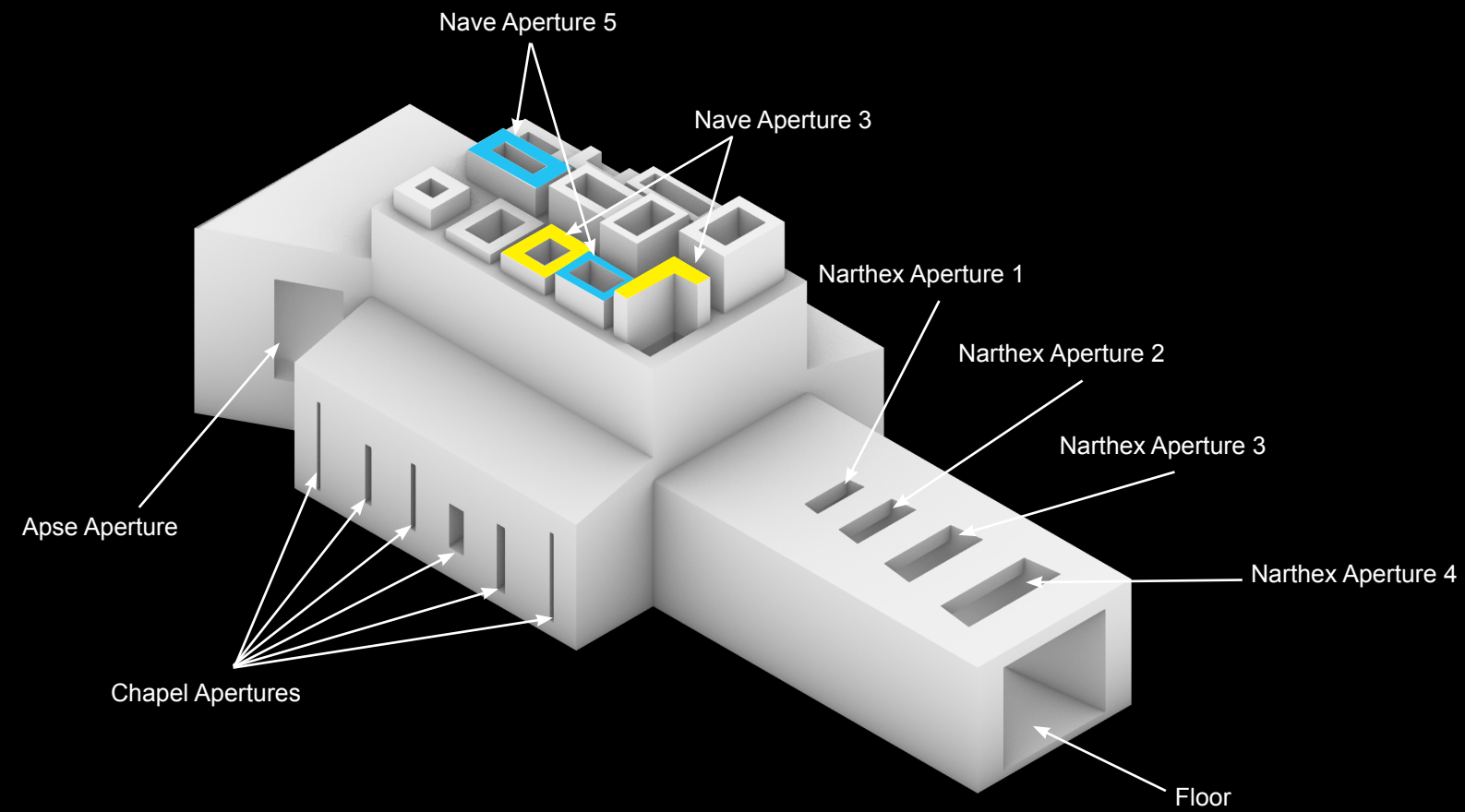


Sanctuary for Spooky Action at a Distance (SSAD)  
Boston Commons  
(Latitude: 42.354853°, Longitude: -71.067500°)  
Date: 03/21  
@ 1000H - CIE clear sky

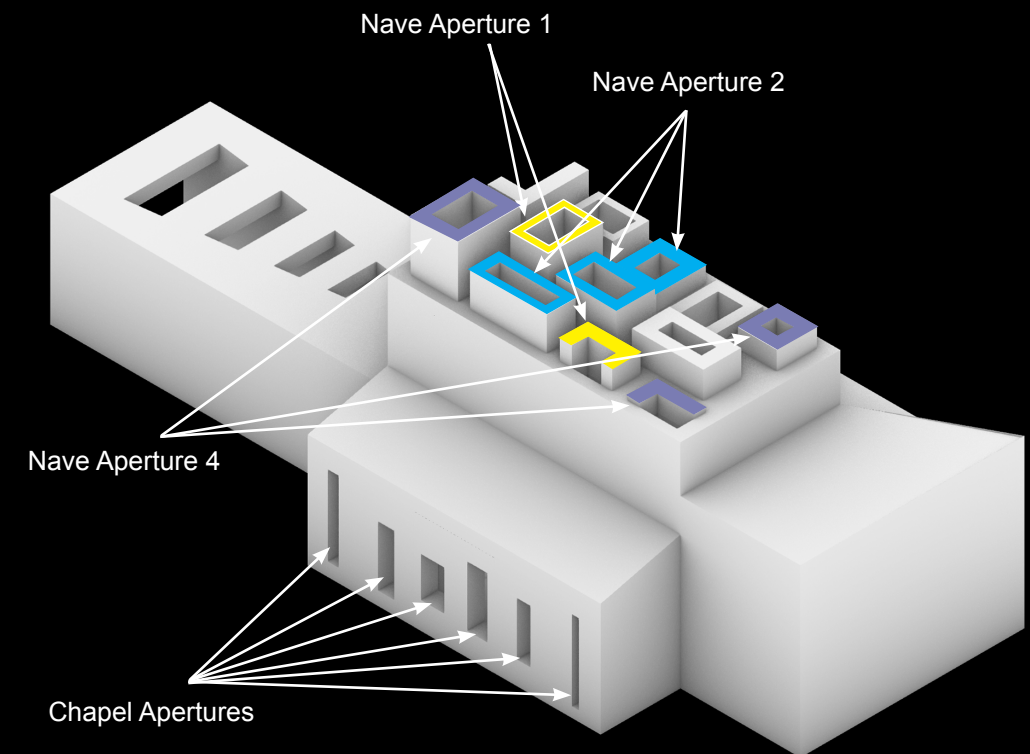


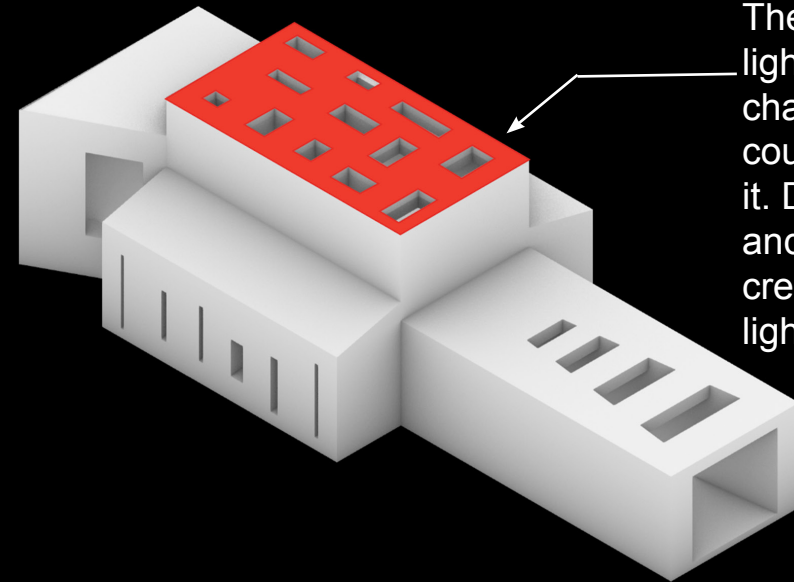


Isometric SE view



Isometric NW view

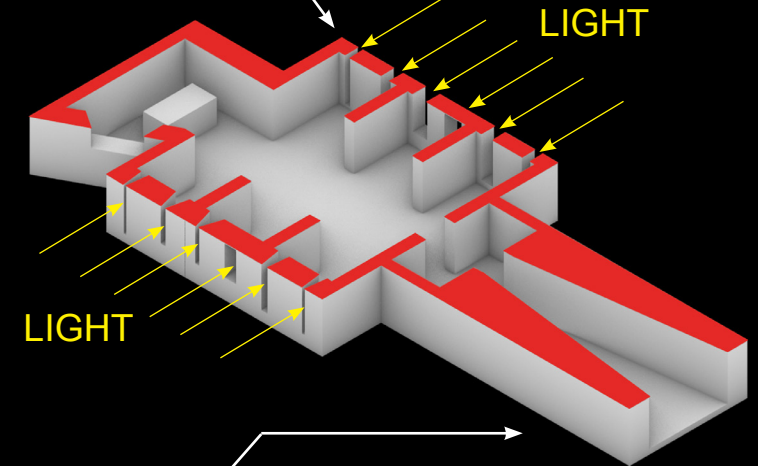




Nave section

The roof of the nave is the major light dance in the sanctuary. Several channels are moulded to guide the course of the light, which canalizes it. Different sizes of the openings and lengths of the channels may create variance in the intensity of light.

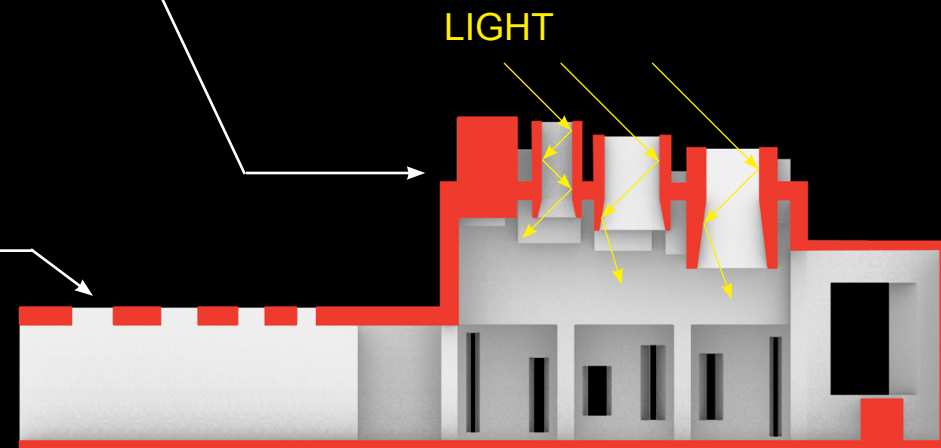
Sunlight will penetrate through vertical slits along the exterior of the chapels. The wall thickness is increased so that the light is also canalized, diffusing into the interior softly.



Narthex / Chapel / Apse section

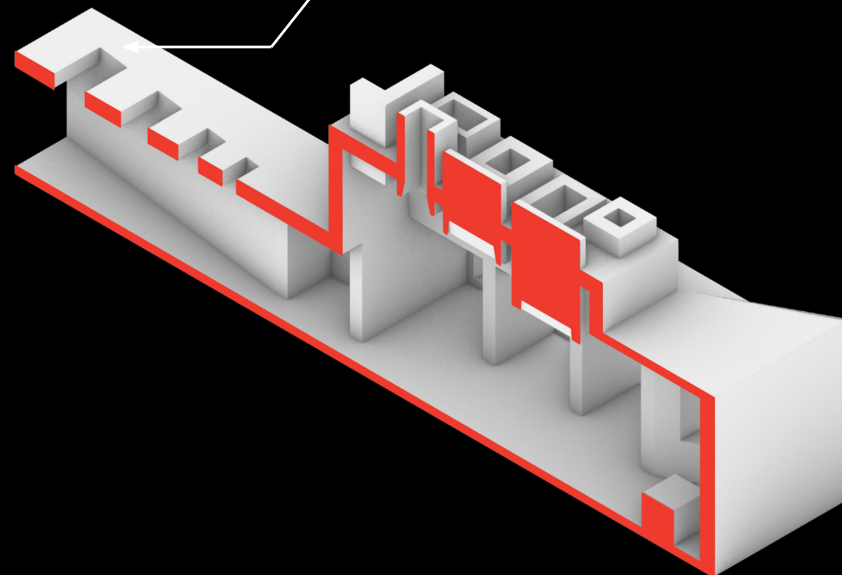
The narthex is elongated and narrowed to the interior, which could block the major lightscape. But the visitor could still see the brighted apse at the entrance, which induces them to ponder what the inside would be like.

Narthex apertures are decreasing in size, which could make a bright-dark-bright rhythm, intending to create a transformative journey towards the apse.

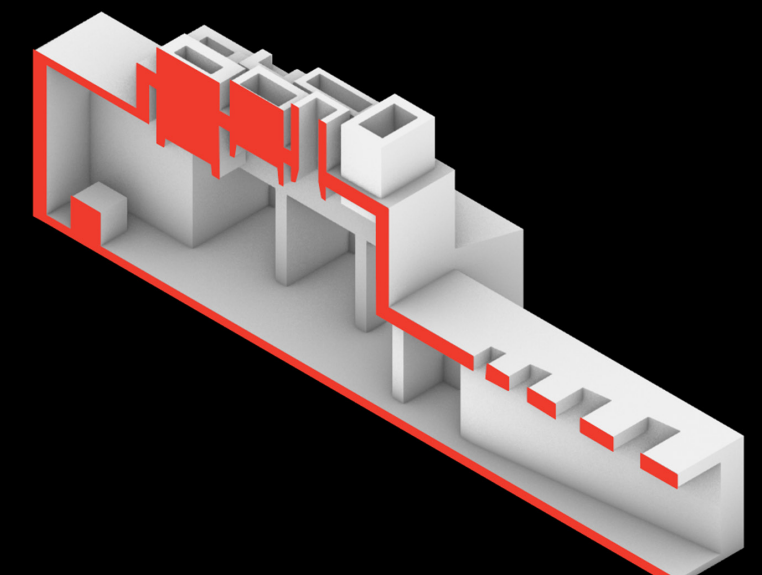


Longitudinal section

Translucent materials are assigned to chapel and apse apertures, which allow light to softly fill in their interiors, creating the atmospheric silence as desired.

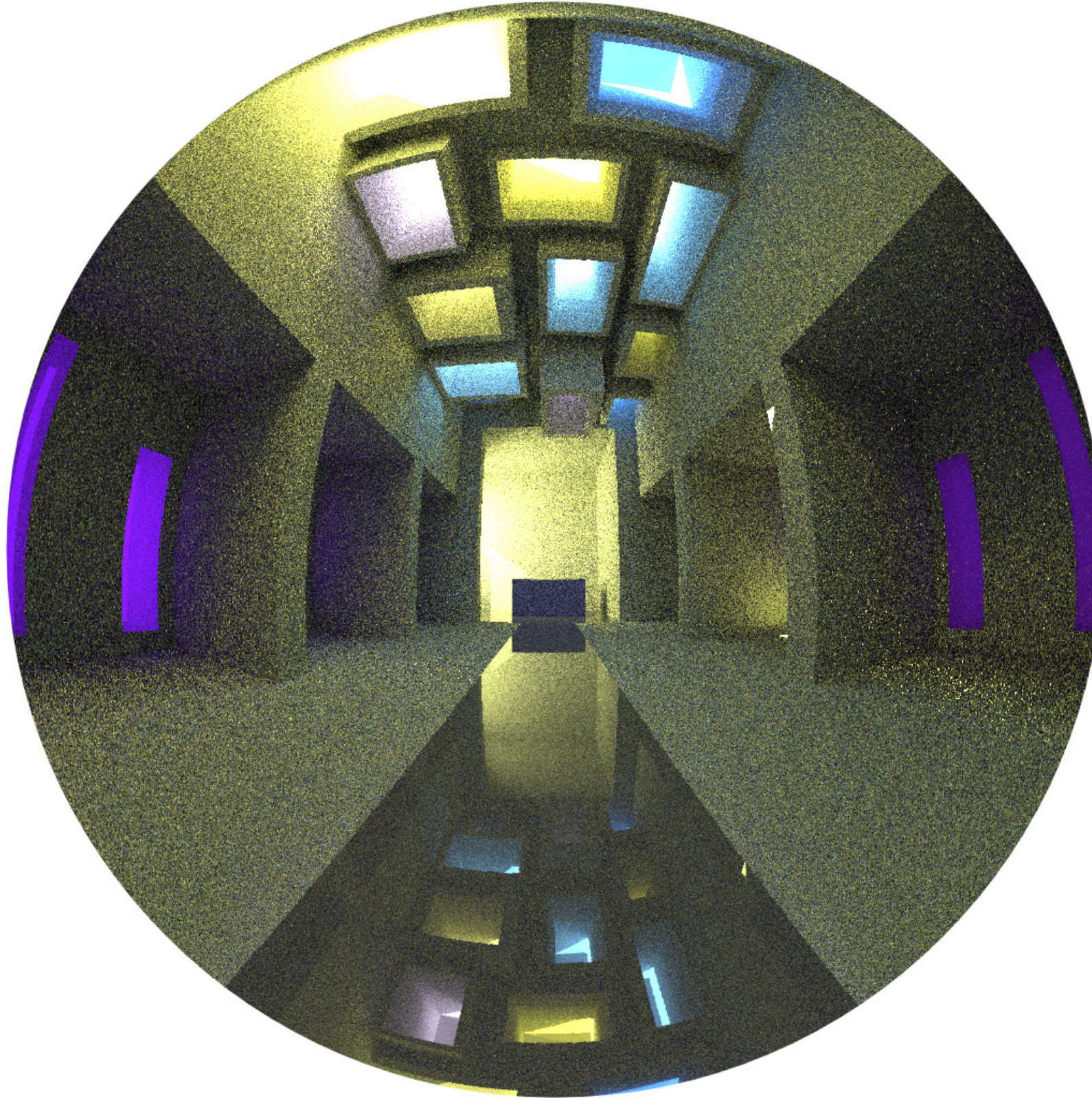


Isometric NW section



Isometric SE section





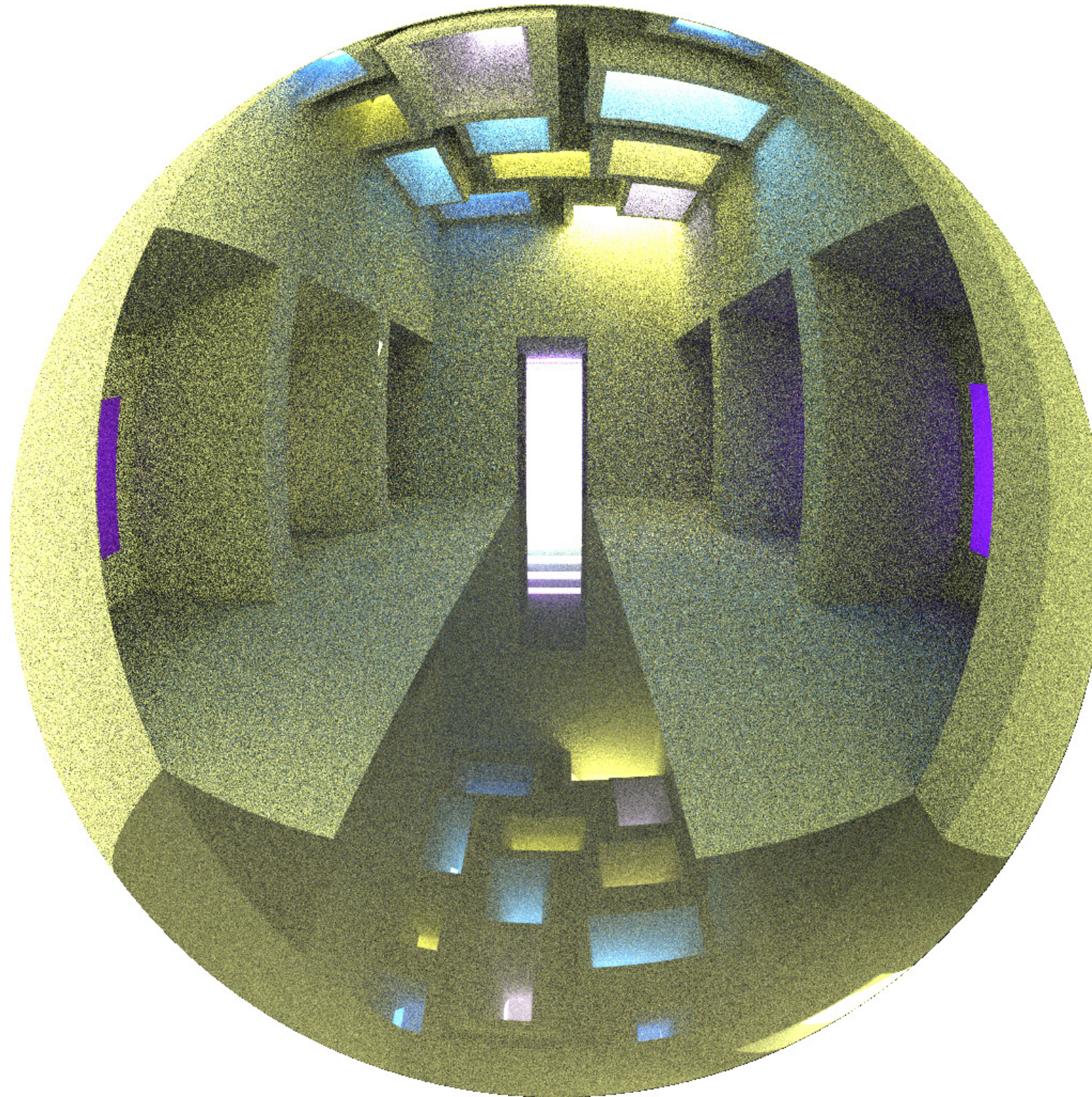
03/21 @ 1000H - CIE clear sky (W)





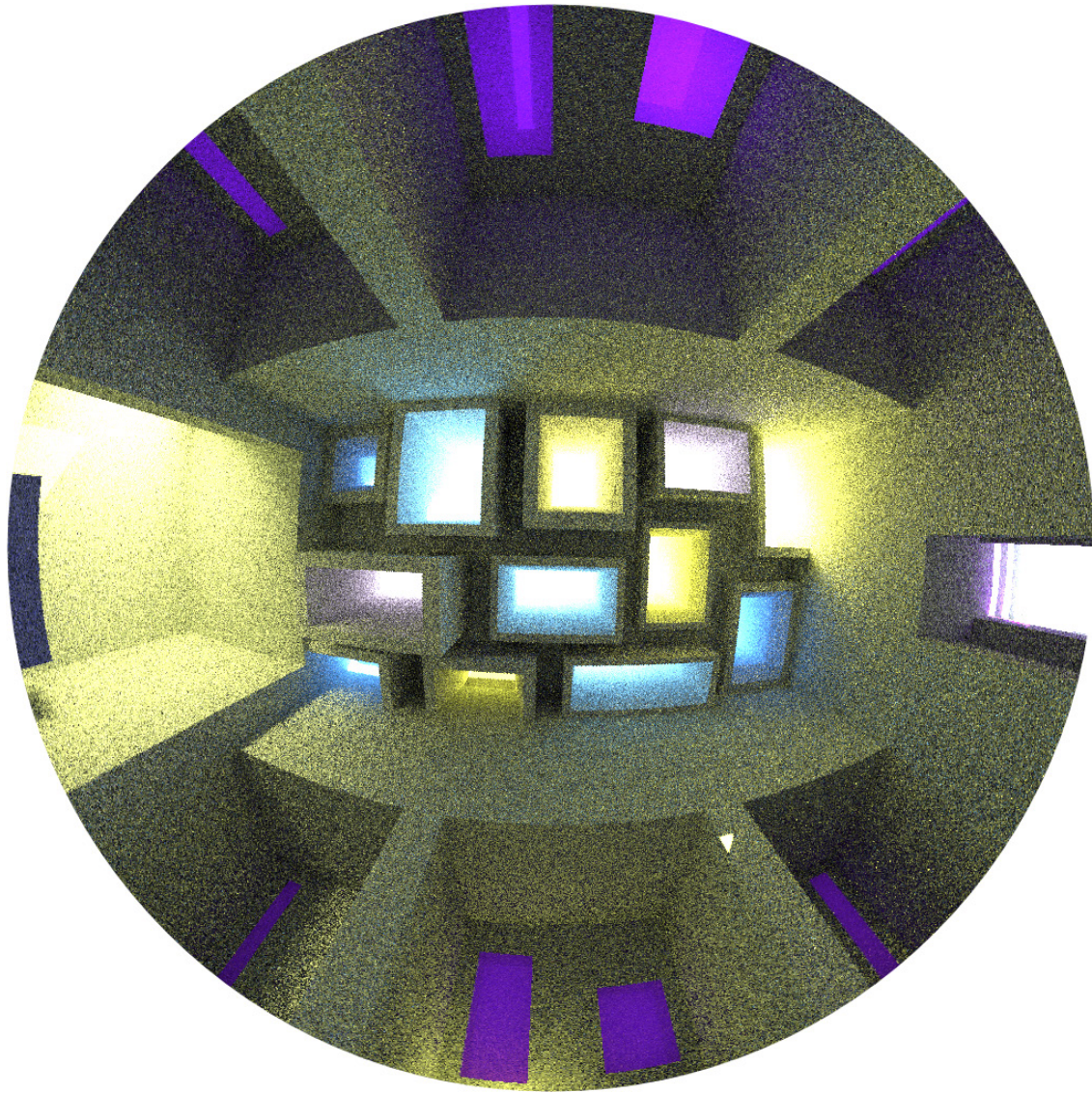
03/21 @ 1000H - CIE clear sky (W)



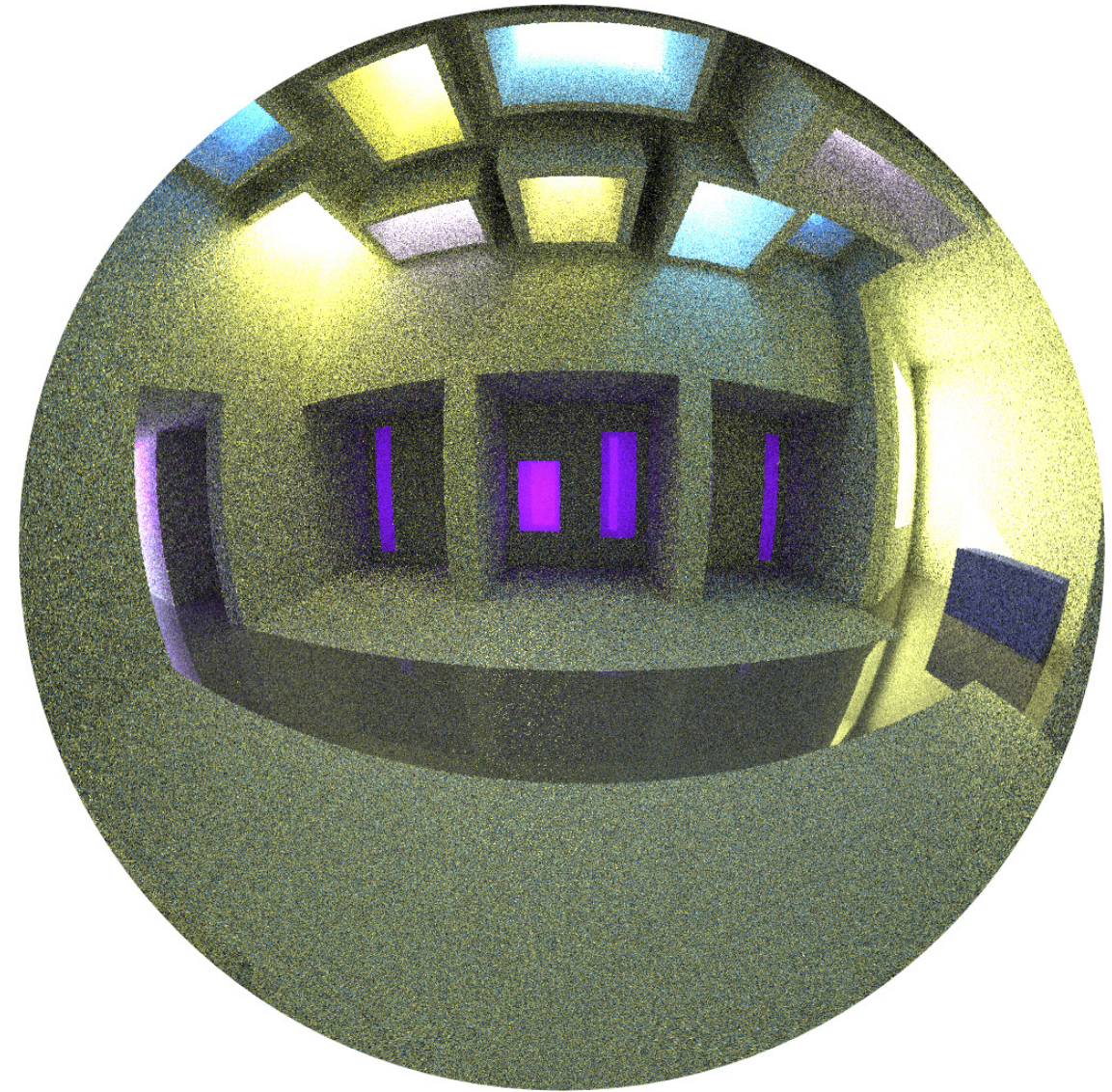


03/21 @ 1000H - CIE clear sky (E)





03/21 @ 1000H - CIE clear sky



03/21 @ 1000H - CIE clear sky (S)