

Question: Could your commute be both beautiful and relaxing?

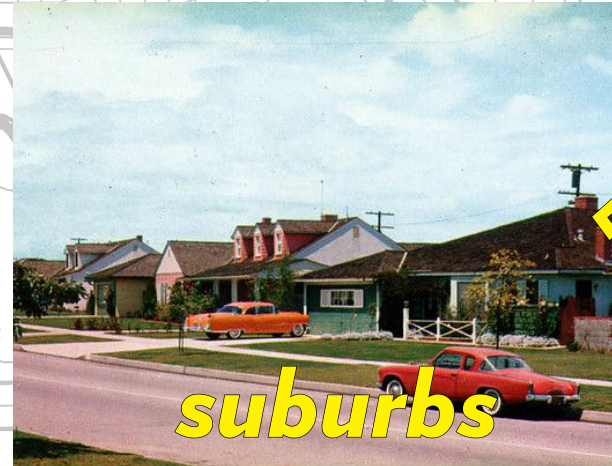
It is no secret that Los Angeles is plagued by traffic, with experts continually planning and attempting to offer viable solutions. The current 'solutions' do not address how people really live today nor plan for the next 100 years.

Inserting an energy generating monorail system connecting the San Fernando Valley with West LA and LAX can open up a new mode of public transport that people would feel good about using, both for work and fun.

Post Single Occupancy Vehicle Los Angeles

The Work/Home Relationship has evolved

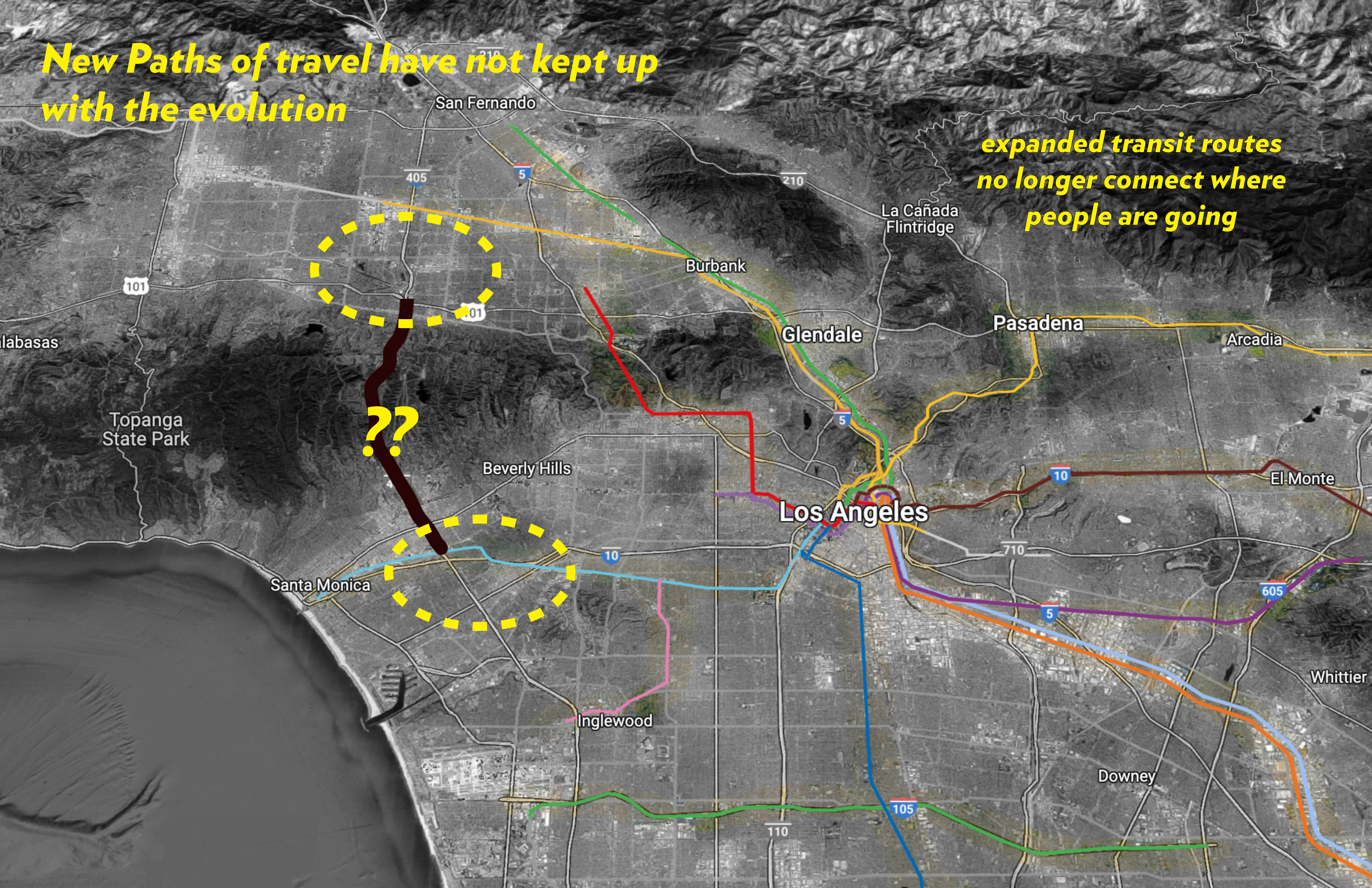
As Los Angeles developed people lived in the suburbs and worked downtown - and public transit options developed to match this dynamic



Current options no longer match people's habits - work from home and shifting job centers changed where people commute to and from

New Paths of travel have not kept up with the evolution

expanded transit routes no longer connect where people are going

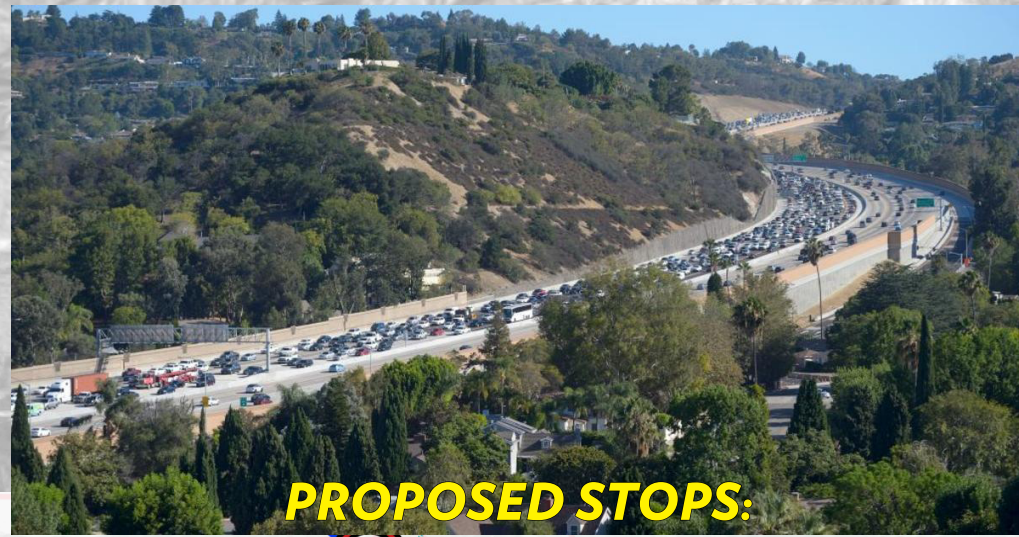


??

There is no place where this is more prevalent than the Sepulveda Pass in West LA



What about a power-generating monorail system flying high above the cars



PROPOSED STOPS:



BUS & PARKING HUB

HIKING TRAIL CONNECTION

MUSEUM CONNECTION

NEW METRO CONNECTION

LAX BEYOND



FINANCIAL SAVINGS

**Current Metro Purple Line Construction :
\$800mil/mile**

**Proposed Metro Monorail Construction :
7% of typ. subway construction
(\$50mil/mile)**

Swiftly take in the views while gliding beneath solar power collecting tracks

Inserted high above existing infrastructure

Energize:

Monorail Engine: 750 volts

Sepulveda pass: 5.5% grade (within 7% monorail max)

22.8 miles of track (x2) for photo-voltaic collection (32 thousand watts/ hour generation potential)

wind turbine inside front of trains to collect addition energy

embedded batteries on-board trains for after-hours use

Inspired by classic observation rail cars

A new connection to home, work & leisure



Net zero demand on grid

*Capitalize on and expand
tourism network*

*Expand transport network
in time for the upcoming
Olympics at a fraction of
the typical cost*

Connecting people where they want to go, sustainably

Fly high above traffic in comfort

An expanded view of LA

Eco-friendly access to walking trails and The Getty Museum

Improving the quality of life and environment for Angelenos & visitors alike



Connecting people where they want to go, beautifully