

# Lakelines - Reviving Bangalore's Water Infrastructure

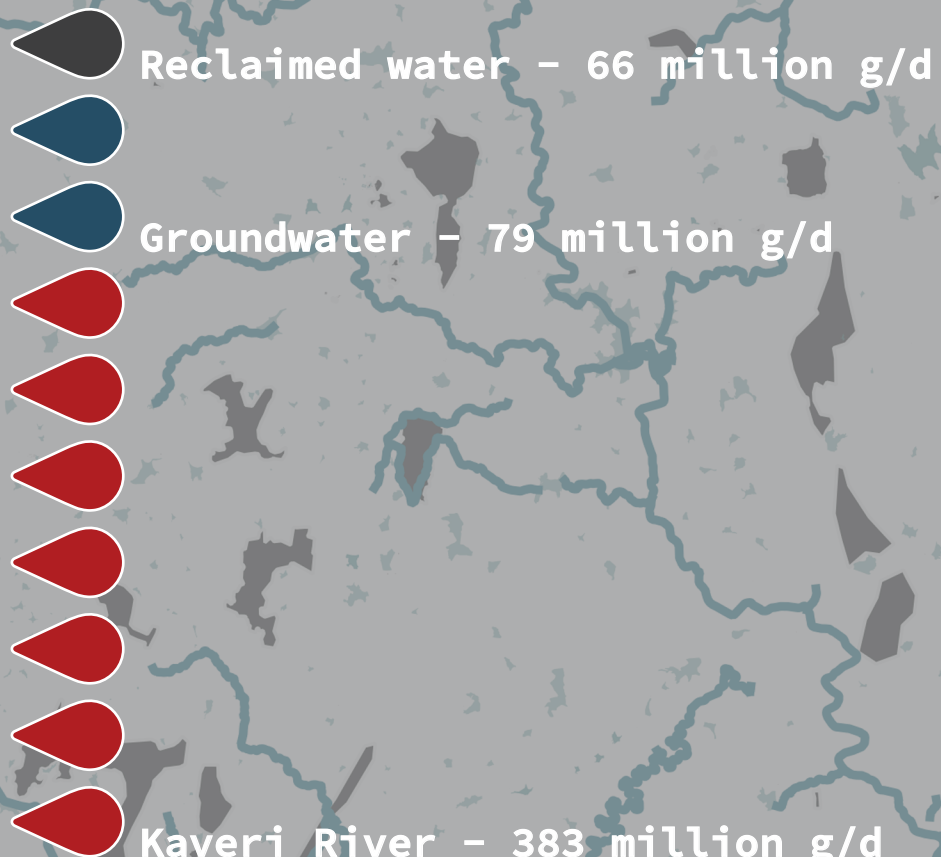
Reimagining the water supply system in Bangalore to reduce dependency on external supply chains, and build inland water resilience in the city.

Reframing the historic urban lake network to provide new avenues of energy conservation, water use, reuse and conservation.

Reweaving the cultural and ecological fabric of the city by creating increased opportunity for traditional forms of urban agriculture, aquaculture



# Bangalore Water Supply Network



528 million  
gallons per day needed

KRS Reservoir

106 km  
downstream

TK Halli Treatment Plant

Shiva Anicut  
Balancing Reservoir

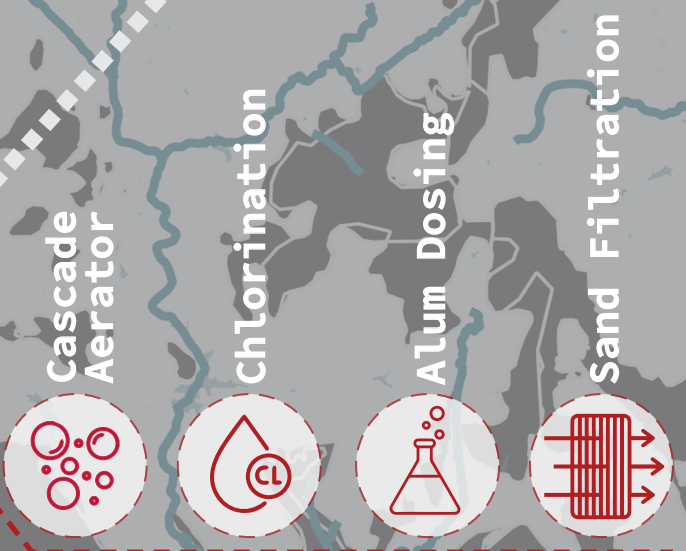
T Narsipura  
Reservoir

81 km  
upstream  
Elevated by  
1500 ft

Tataguni Pumping Station

Harohalli Pumping Station

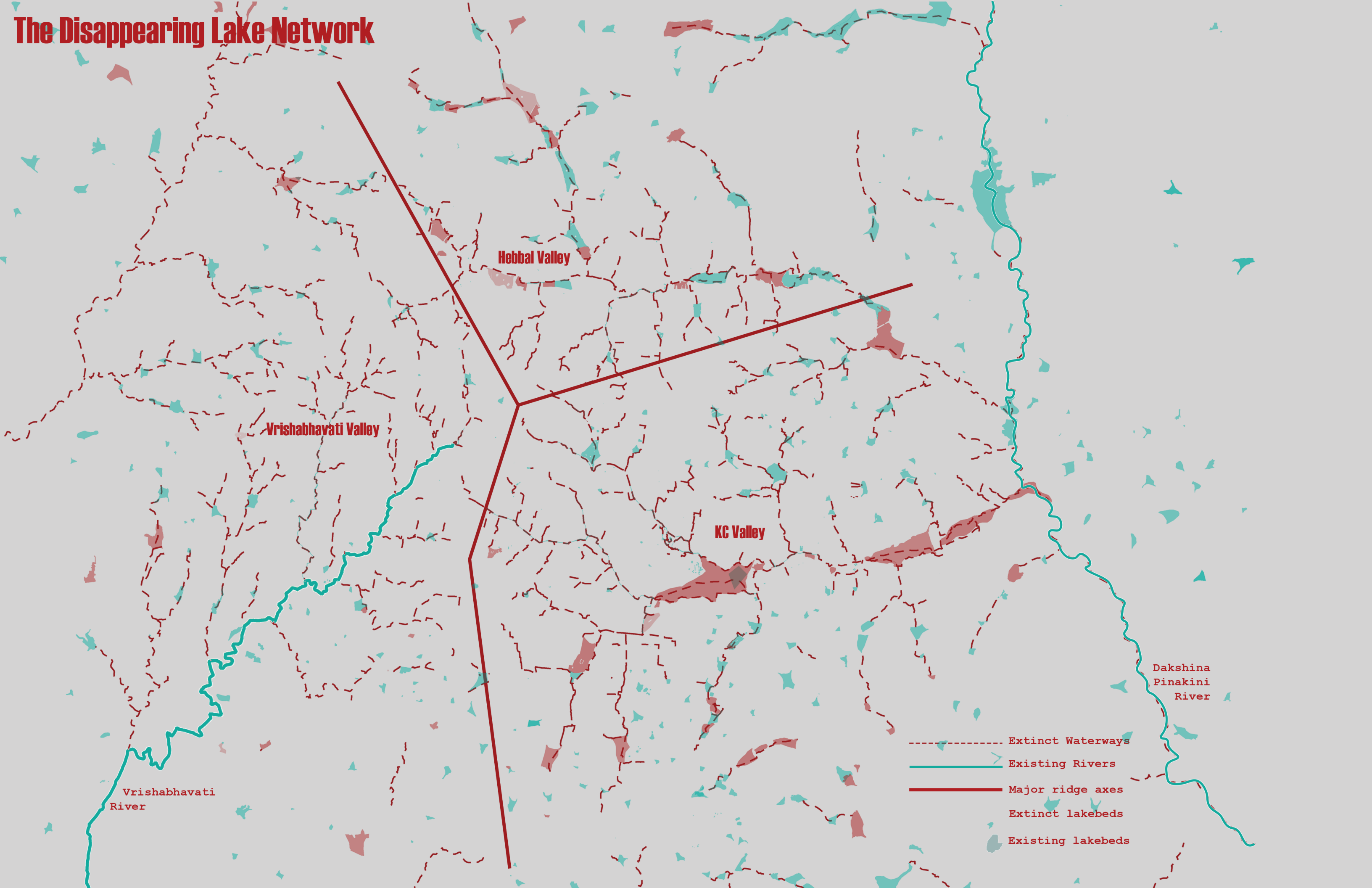
Network of Ground  
Level Reservoirs  
in Bangalore City



Water Purification Process

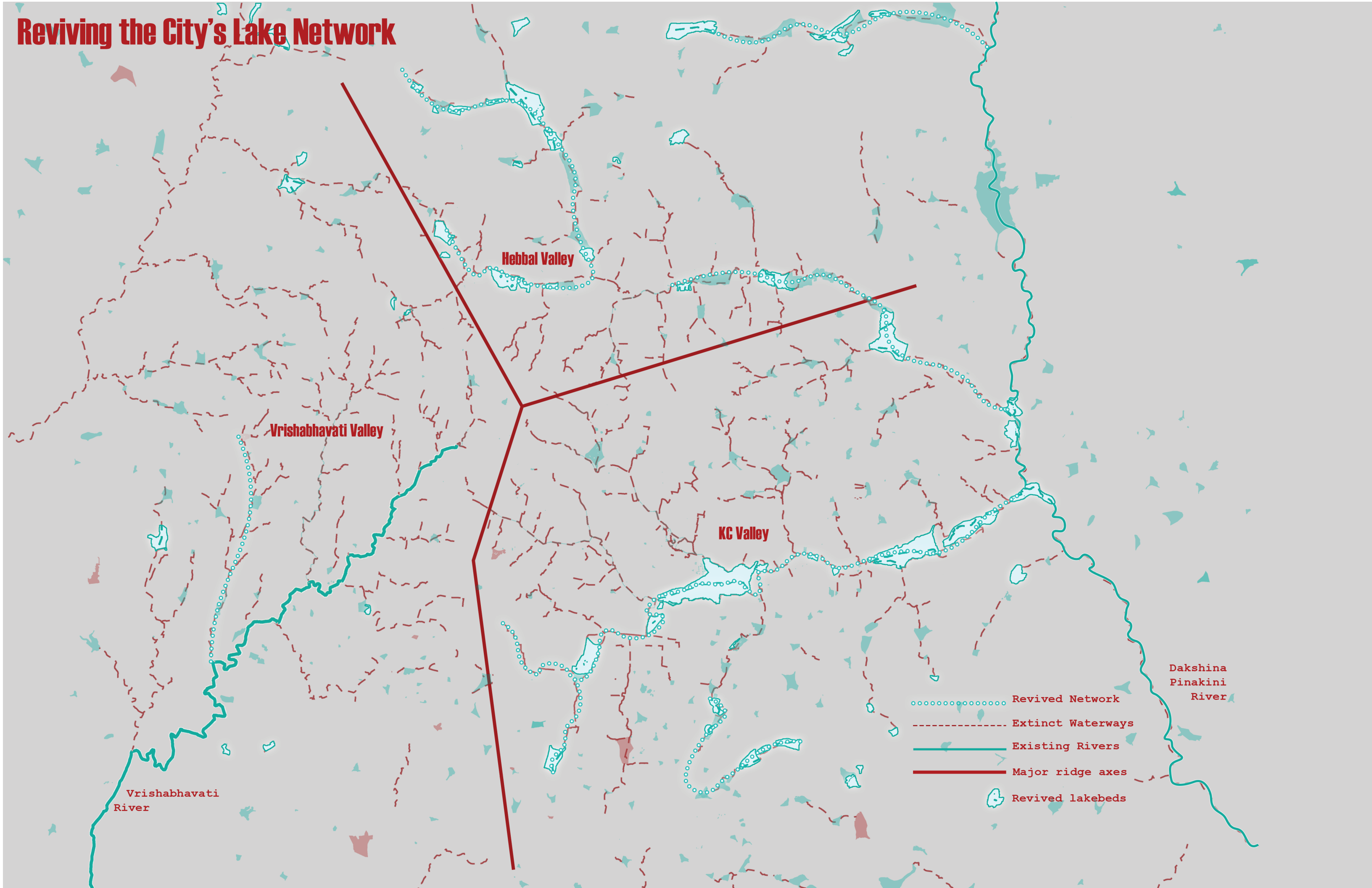


# The Disappearing Lake Network



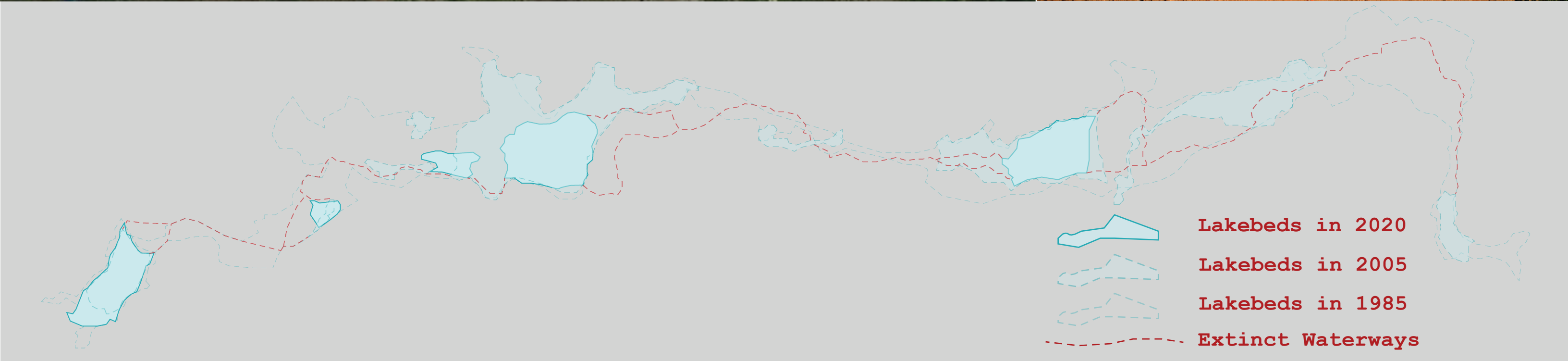


# Reviving the City's Lake Network



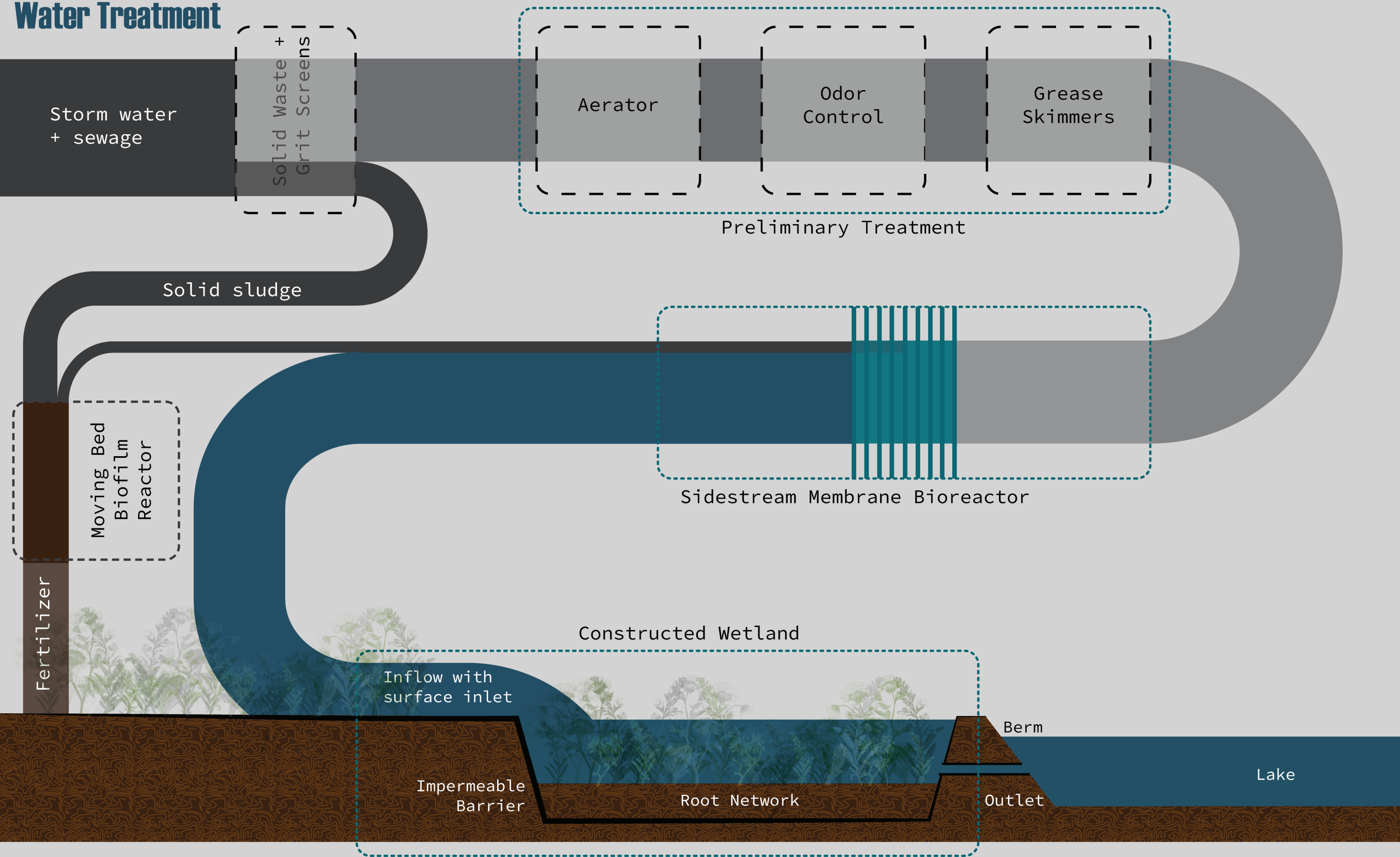


**Cause and Effect**





# Water Treatment





# Towards a Circular Water Economy

