

Name: _____ Period: _____ Date: _____

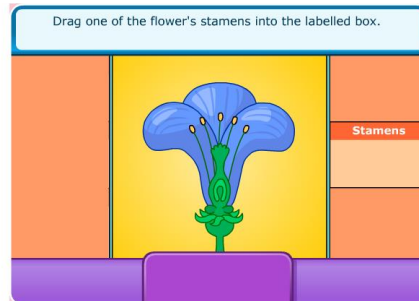
Online Flower Dissection Lab

Pre-Lab Questions:

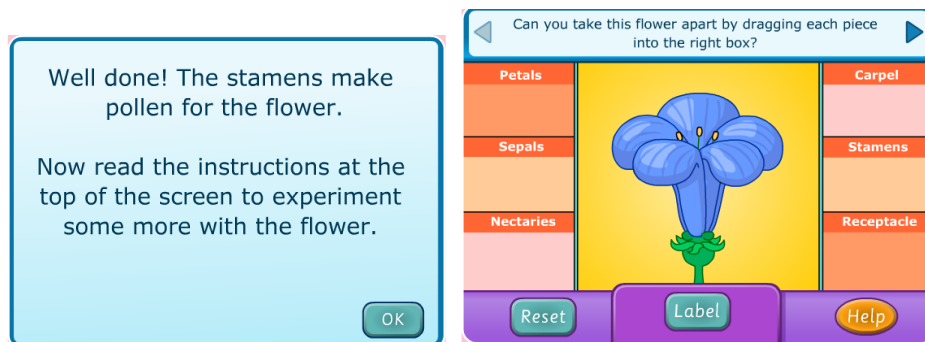
- A. What are 3 things we already know about plants (or plant cells)?
- a.
 - b.
 - c.
- B. What are the 3 main differences between asexual and sexual reproduction?
- a.
 - b.
 - c.
- C. Predict: What kind of reproduction do flowering plants use? Asexual or sexual?

Procedure:

1. Go to the website <http://www.sciencekids.co.nz/gamesactivities/lifecycles.html>
2. Drag one of the stamens into the labeled box.



3. Take the flower apart by dragging all of the pieces into the correct box.



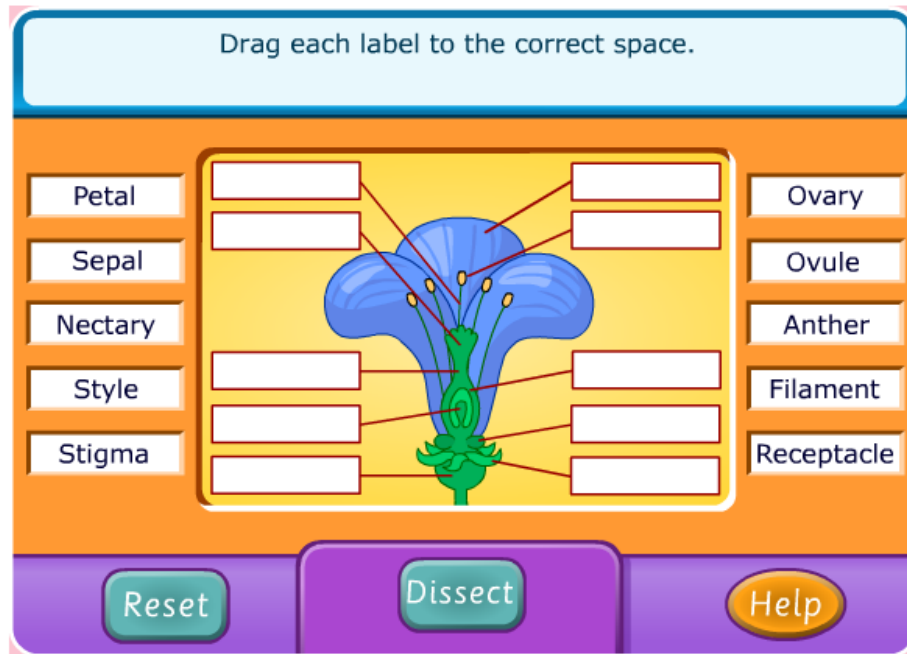
Name: _____ Period: _____ Date: _____

4. Click on the magnifying glass in each box to read the function (job) of each piece. Fill in the table below with the information you learn. (DO NOT just copy the entire paragraph! Summarize!)

Part of the Flower	Draw a picture and label the parts.	SUMMARIZE the Function: What does this part of the flower do? Why is it important?
Petals		
Sepals		
Nectaries		
Carpel (Stigma, Style, Ovule, Ovary)		
Stamens (Anther, filament)		
Receptacle		

Name: _____ Period: _____ Date: _____

5. Once you have filled in the chart, click the blue arrow in the top right. Drag each label to the correct space. Record your answers on your handout in the diagram below.



Conclusion Questions

Answer the following questions based on what you learned in the lab.

- What is pollen? What does it contain?
- How is pollen carried to the stigma?
- What kind of cells are egg and sperm? Somatic cells or gametes?
- Are they diploid or haploid? How do you know?
- What part of the flower develops into the fruit?
- Is this sexual or asexual reproduction? How do you know?