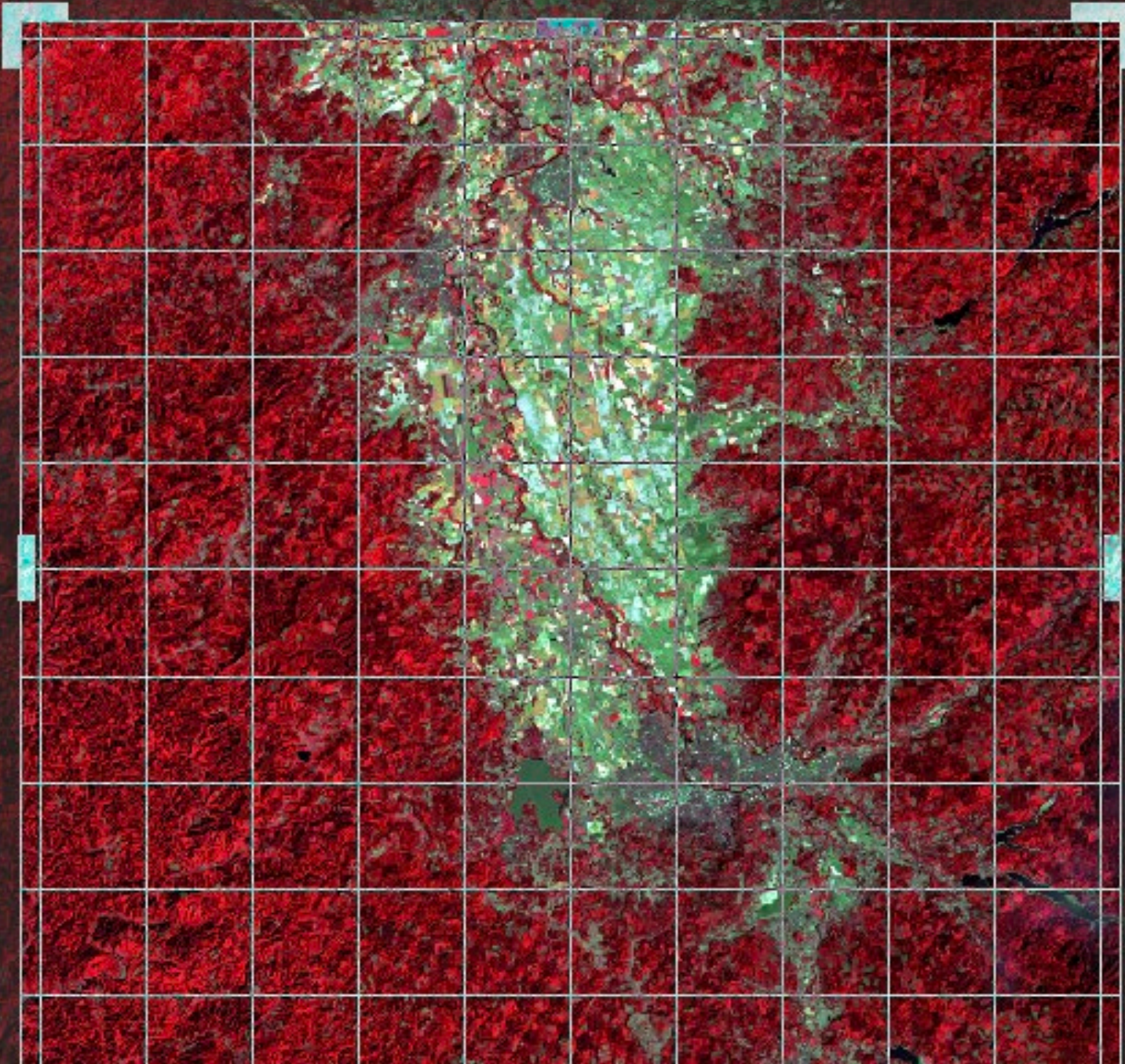
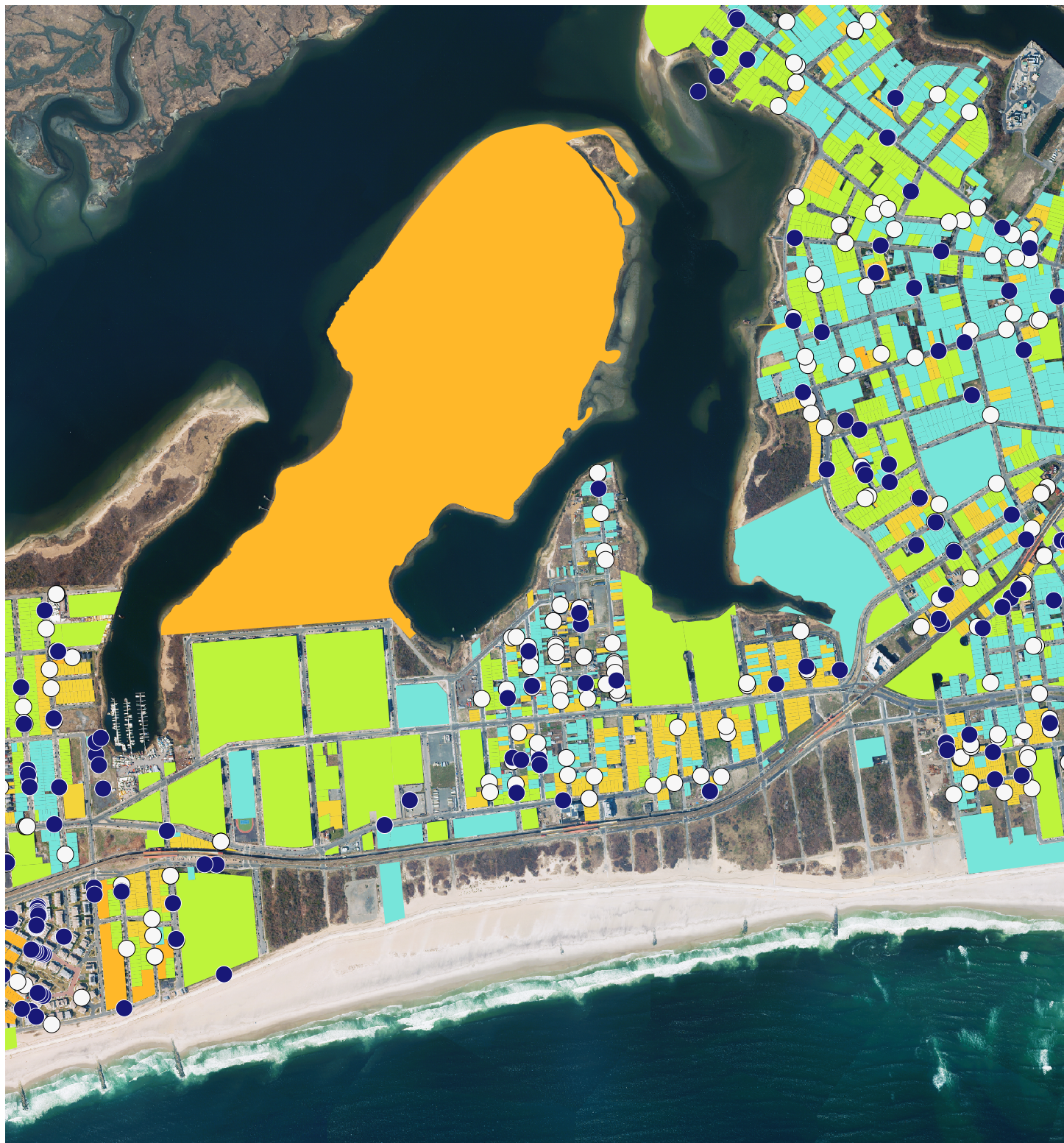


exercises in cropping
panning
selecting
downloading
mapping



adela locsin
methods in spatial
research sp 2021



- property sales, 2013
- property sales, 2018
- built: 1910 – 1950
- built: 1950 – 1997
- built: 1997 – 2008
- built: 2008 – 2013

*Property Sales vs. Building Age in Edgemere, Queens

Projection: WGS 84
Data: Real Estate Sales, New York,
NY (2018 and 2013), Newman Library,
Baruch CUNY / NYC PLUTO Tax Lot
Data / USGS LandSat Aerial Imagery

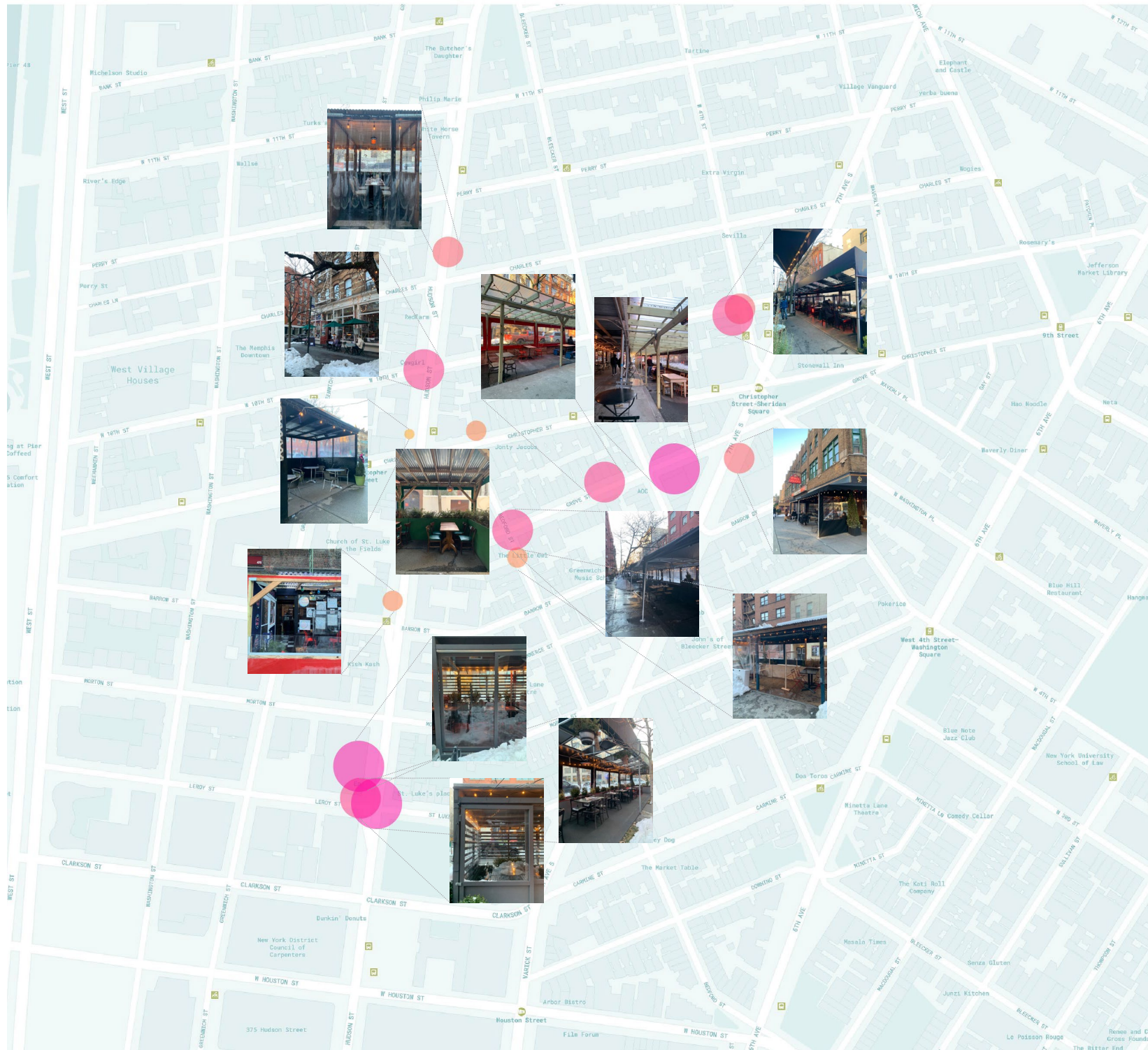
0 0.1 0.2 miles



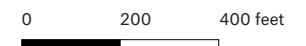
*Mapping Outdoor Dining Availability in West Village, NYC

Projection: WGS 84
Data: Self-collected
Base layer: MapBox

For our self-collected data exercise, I selfishly decided to investigate the state of outdoor dining in my neighborhood, the West Village. I was able to collect data about the number of available chairs at selected restaurants, and collected photographs that I superimposed over the map in a separate step.



OUTDOOR DINING CHAIR COUNT



CHICAGO'S GANGLAND

PREPARED BY
FREDERIC M. THRASHER
1923-26

LEGEND

- Gangs with Chisoms
- Gangs without Chisoms
- Parks, Bodereals, and Cemeteries
- Industrial Property
- Railroad Property

MAP 3 CENSUS TRACTS OF CHICAGO 1934

PERCENTAGE OF
TOTAL HOMES OWNED

LEGEND

- 70-79
- 60-69
- 50-59
- 40-49
- 30-39
- 20-29
- 10-19
- UNDER 10

BLANK AREAS HAVE NO HOMES
DATA FROM TABLE 1, PAGES 1-108

College Library
Oobb Hall

MAP LEGEND

- 1 COMMUNITY BOUNDARIES
- 2 CENSUS TRACT BOUNDARIES
- 3 STREETS FORMING COMMUNITY BOUNDARIES
- 4 RAILROADS FORMING COMMUNITY BOUNDARIES
- 5 PARKS FORMING COMMUNITY BOUNDARIES
- 6 CENSUS TRACT BOUNDARIES
- 7 RAILROAD OR INDUSTRIAL PROPERTY
- 8 PARKS FORMER PRESERVED AND CEMETERIES

NOTE: THE CITY OF CHICAGO
THE UNIVERSITY OF CHICAGO

COPYRIGHT 1934 BY THE UNIVERSITY OF CHICAGO

FROM: "CENSUS DATA OF THE CITY OF CHICAGO-1934"
The University of Chicago Libraries

G4104 .C6 C73 1934 .U54 Map C1

CHICAGO'S GANGLAND

PREPARED BY
FREDERIC M. THRASHER
1923-26

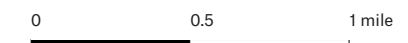
LEGEND

- ▲ Gangs with Clubrooms
- Gangs without Clubrooms
- ▨ Parks, Boulevards, and Cemeteries
- ▨ Industrial Property
- ▨ Railroad Property

Data:
 "Census Tracts of Chicago, 1934",
 University of Chicago:
[https://luna.lib.uchicago.edu/
 luna/servlet/detail/UCHI-
 CAGO-2-2-493-1239907?-Census-
 tracts-of-Chicago,-1934,-P?qvq=q:_
 luna_media_exif_filename%3DGA4104-
 C6E73-1934-U54.tif&mi=0&trs=1#](https://luna.lib.uchicago.edu/luna/servlet/detail/UCHI-CAGO-2-2-493-1239907?-Census-tracts-of-Chicago,-1934,-P?qvq=q:_luna_media_exif_filename%3DGA4104-C6E73-1934-U54.tif&mi=0&trs=1#)

The home ownership overlay on this map is meant to challenge Thrasher's perceived notion that "the gang develops as one manifestation of the economic, moral, and cultural frontier which marks the interstice." (Thrasher, 22, "The Gang: A Study of 1,313 Gangs in Chicago") By using home ownership as a measure of stability and security in neighborhoods, the map seeks to undo Thrasher's argument. Unfortunately, hard data is difficult to find: many other subjective maps exist (some shown on next page) but are not as detailed as this one.

home ownership: < 10%



2.

MAP OF CHICAGO
-SHOWING-
**EXTENSION OF
AREA OCCUPIED
BY
HIGH GRADE RESIDENTIAL
OR
APARTMENT BUILDINGS
1833-1933**

**AREAS OF NEW GROWTH BY PERIODS
LEGEND**

- BEFORE 1857
- 1857 TO 1873
- 1874 TO 1899
- 1900 TO 1933

BASE-MAP LEGEND

- ONE HALF MILE STREETS
- BOULEVARDS
- RAILROAD TRACKS
- RAILROAD PROPERTIES
- PARKS, FOREST PRESERVES, & CEMETERIES

LEGEND

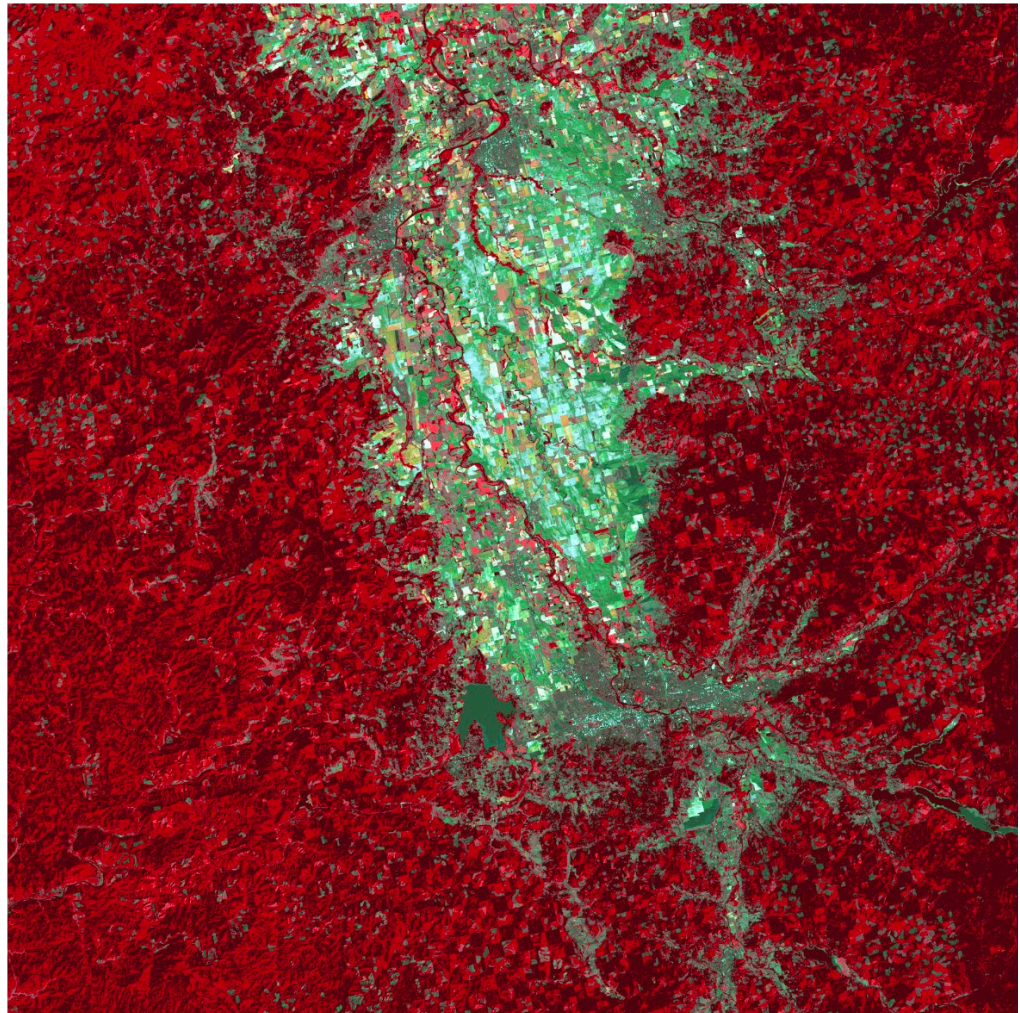
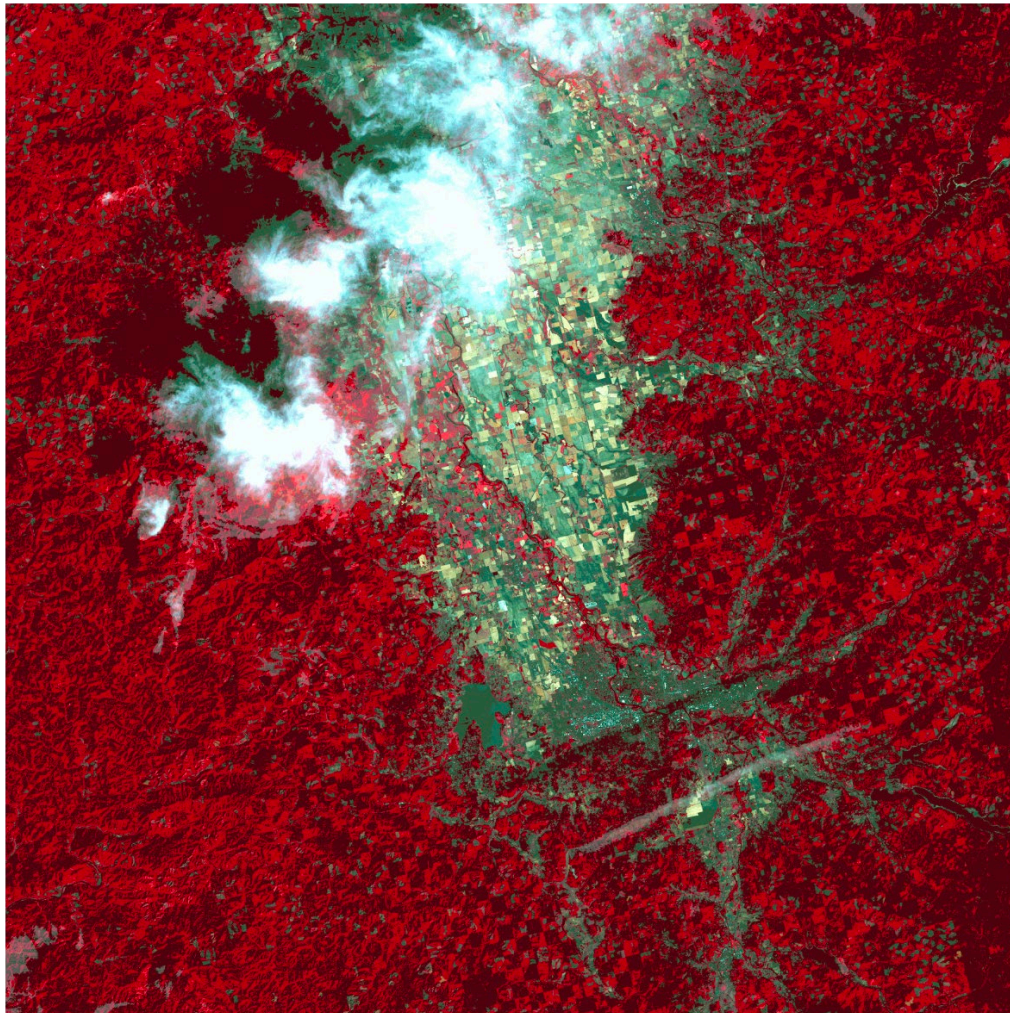
- RENTALS OVER \$60 PER MONTH OR OVER 50% HOMES OWNED
- ROOMING HOUSE AREA
- OVER 50% FOREIGN WHITE STOCK (EXCEPT GERMAN AND SWEDISH)
- OVER 50% NEGRO
- MAJOR RAILROAD AND INDUSTRIAL PROPERTY

ADAPTED FROM MAPS PREPARED BY THE
SOCIAL SCIENCE RESEARCH COMMITTEE,
THE UNIVERSITY OF CHICAGO

ADAPTED FROM MAPS PREPARED BY THE
SOCIAL SCIENCE RESEARCH COMMITTEE
THE UNIVERSITY OF CHICAGO

Checkerboarding in
Northwestern Oregon,
Sept 2015 – 2018

Projection: WGS 84
Data: USGS LandSat 8
Band: 4-3-2 (Infrared)



Checkerboarding in
Northwestern Oregon,
Sept 2015 – 2018

Projection: WGS 84
Data: USGS LandSat 8
Band: 3-2-1 (RGB)

