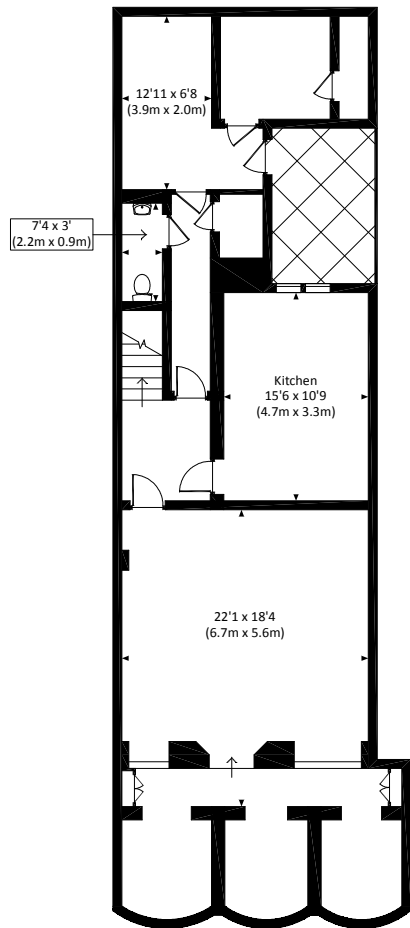


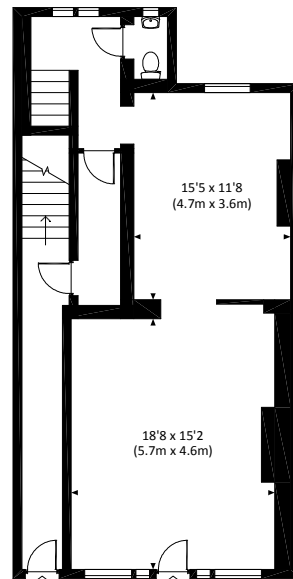
# ROYAL HOSPITAL ROAD, SW3

Approx. gross internal area 4051 Sq Ft. / 376.3 Sq M.

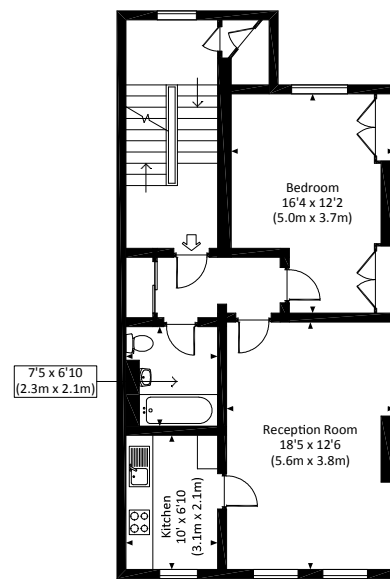
Approx. gross internal area 4079 Sq Ft. / 378.9 Sq M. Inc. Restricted Height



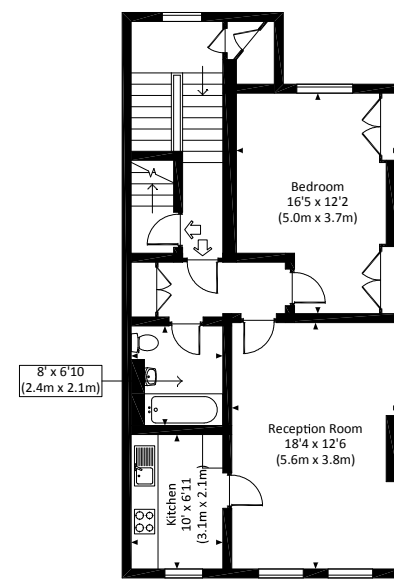
LOWER GROUND FLOOR (COMMERCIAL)



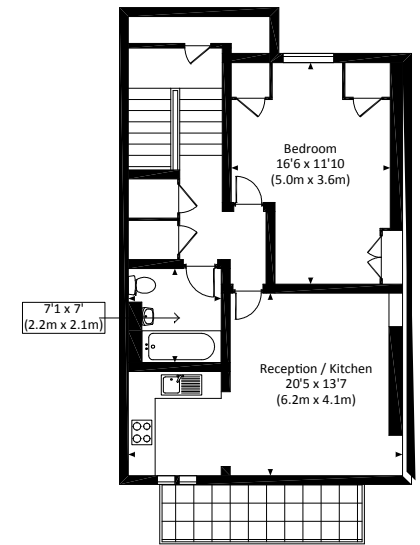
GROUND FLOOR (COMMERCIAL)



FIRST FLOOR (FLAT 1)



SECOND FLOOR (FLAT 2/FLAT 3)



THIRD FLOOR (FLAT 3)



All measurements have been made in accordance with RICS Code of Measuring Practice which are approximate only and only for illustrative purposes. For the avoidance of doubt, Dowling Jones Design shall not be liable for any reliance on these measurements. © 2018 www.dowlingjones.com 020 7610 9933