

# TUNGSTEN PARK // WITHAM

// MORRISONS

// DALEBROOK

// SIMARCO

// HAYMANS

// VELTA LOGISTICS

// HOWDENS

// EUROVIEW

// EAST WAYS

// A12

// CHELMSFORD / LONDON

// COLCHESTER

## TO LET / FOR SALE 11,000 - 45,000 SQ FT AVAILABLE Q2 2020

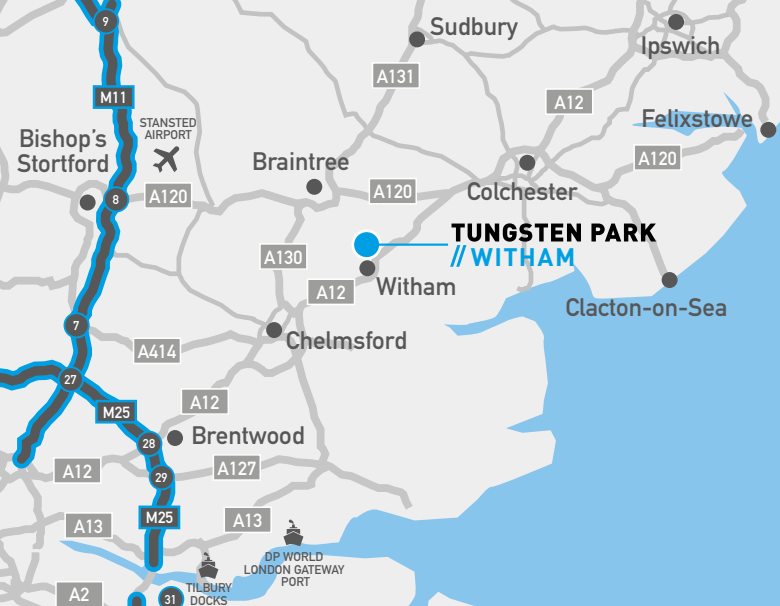
THREE HIGH SPECIFICATION INDUSTRIAL/LOGISTIC UNITS  
TUNGSTEN PARK, EASTWAYS, WITHAM, CM8 3YQ

[www.tungstenpark.com/witham](http://www.tungstenpark.com/witham)

A Development By

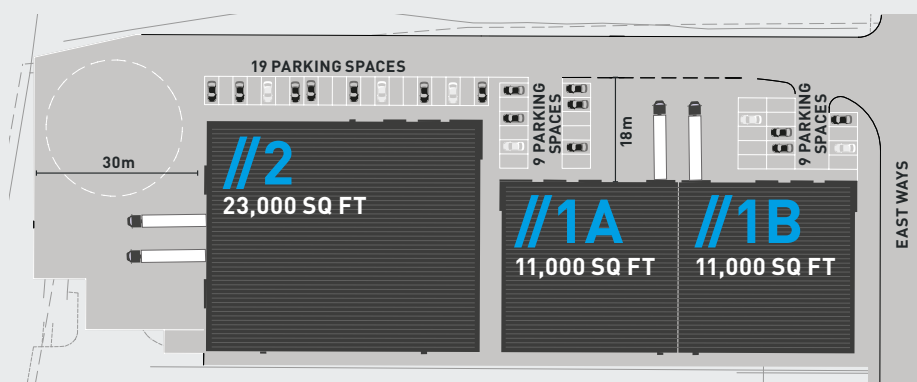
**TUNGSTEN**  
PROPERTIES





	MILES		MILES
A120	6.5	QE2 BRIDGE	36
M25 J29	26	CENTRAL LONDON	60
CHELMSFORD	12	DP WORLD PORT	31
STANSTED AIRPORT	23	PORT OF FELIXSTOWE	42

UNIT 1A	SQ FT
WAREHOUSE	10,000
OFFICES	1,000
TOTAL GIA	11,000
EAVES HEIGHT	8M
LEVEL ACCESS	1
CAR PARKING	9
YARD DEPTH	18M

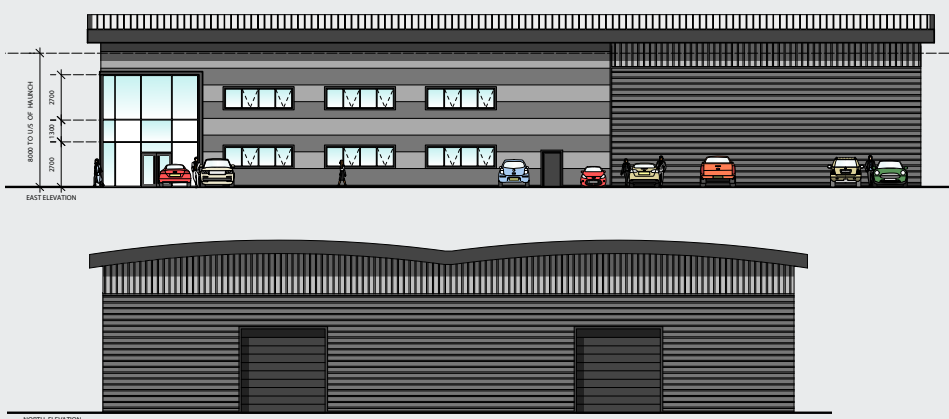


UNIT 1B	SQ FT
WAREHOUSE	10,000
OFFICES	1,000
TOTAL GIA	11,000
EAVES HEIGHT	8M
LEVEL ACCESS	1
CAR PARKING	9
YARD DEPTH	18M

THE SCHEME PROVIDES FOR THREE MID-BOX WAREHOUSE UNITS SUITABLE FOR B1C (LIGHT INDUSTRIAL), B2 (GENERAL INDUSTRIAL) AND B8 (STORAGE & DISTRIBUTION) OPERATIONS.

## UNIT 2

UNIT 2	SQ FT
WAREHOUSE	21,000
OFFICES	2,000
TOTAL GIA	23,000
EAVES HEIGHT	8M
LEVEL ACCESS	2
CAR PARKING	19
YARD DEPTH	30M



PHIL DENNIS  
07799 221 113  
pdennis@savills.com



DANIEL HARNESS  
07887 058 676  
daniel@harwinproperty.co.uk

For the joint agents and the vendors or lessors of this property whose agents they are, give notice that: 1.) The particulars are set out as a general outline only for the guidance of intending purchasers or lessors and do not constitute, nor constitute part of, an offer or contract. 2.) All descriptions, dimensions, references to condition and necessary permission for use and occupation, and other details, are given in good faith and are believed to be correct but any intending purchasers or tenants should not rely on them as statements or representations of fact but satisfy themselves by inspection or otherwise as to the correctness of each of them. 3.) No person in the employment of the joint agents has any authority to make or give any representation or warranty whatever in relation to this property. December 2019 designed & produced by CORMACK - cormackadvertising.com