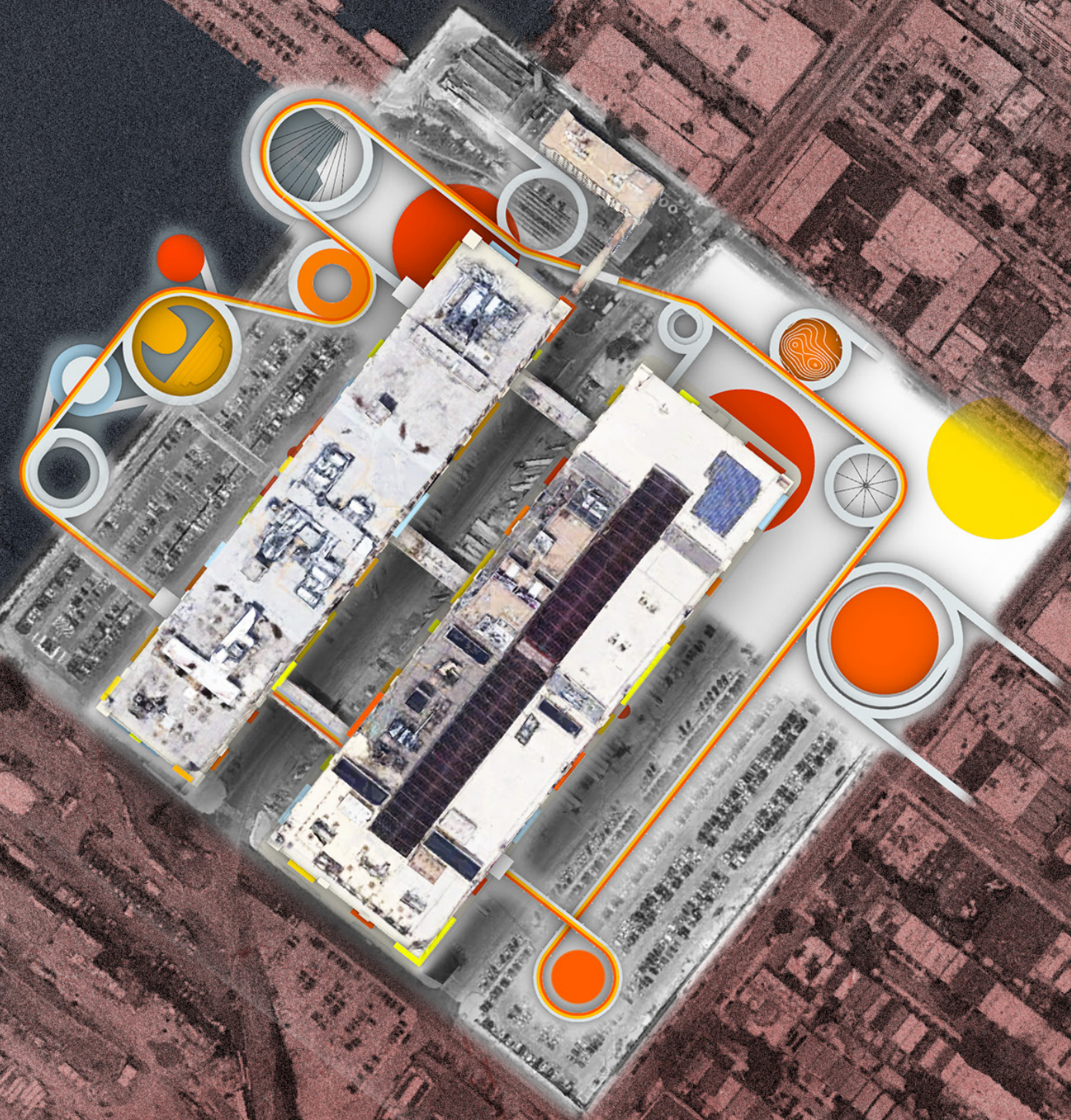


YINING LAI
L.A.T / LUDIC, ABILITIES, TRAVEL





Brooklyn Army Terminal is a waterside treasure for Sunset Park to build the connection between the community and the city. Despite the existing program, the BAT can be a place for families to spend the weekend, adding vitality to the neighborhood. Thus, I proposed to double the program of BAT based on the concept of **L.A.T: Ludic, Abilities, Travel**.

L (Ludic): My proposal is to design a playground not only for kids but also for adults. My definition of the playground in the project is setting entertainment as the beginning point to incorporate art, leisure, and fitness into the playground.

A (Abilities): The project is to build accessibility to the community around as well as the city. So I want to make the project accessible by every kind of ability, whether people are disabled or not, or you on foot, on a bike, on a wheelchair, or even on a boat.

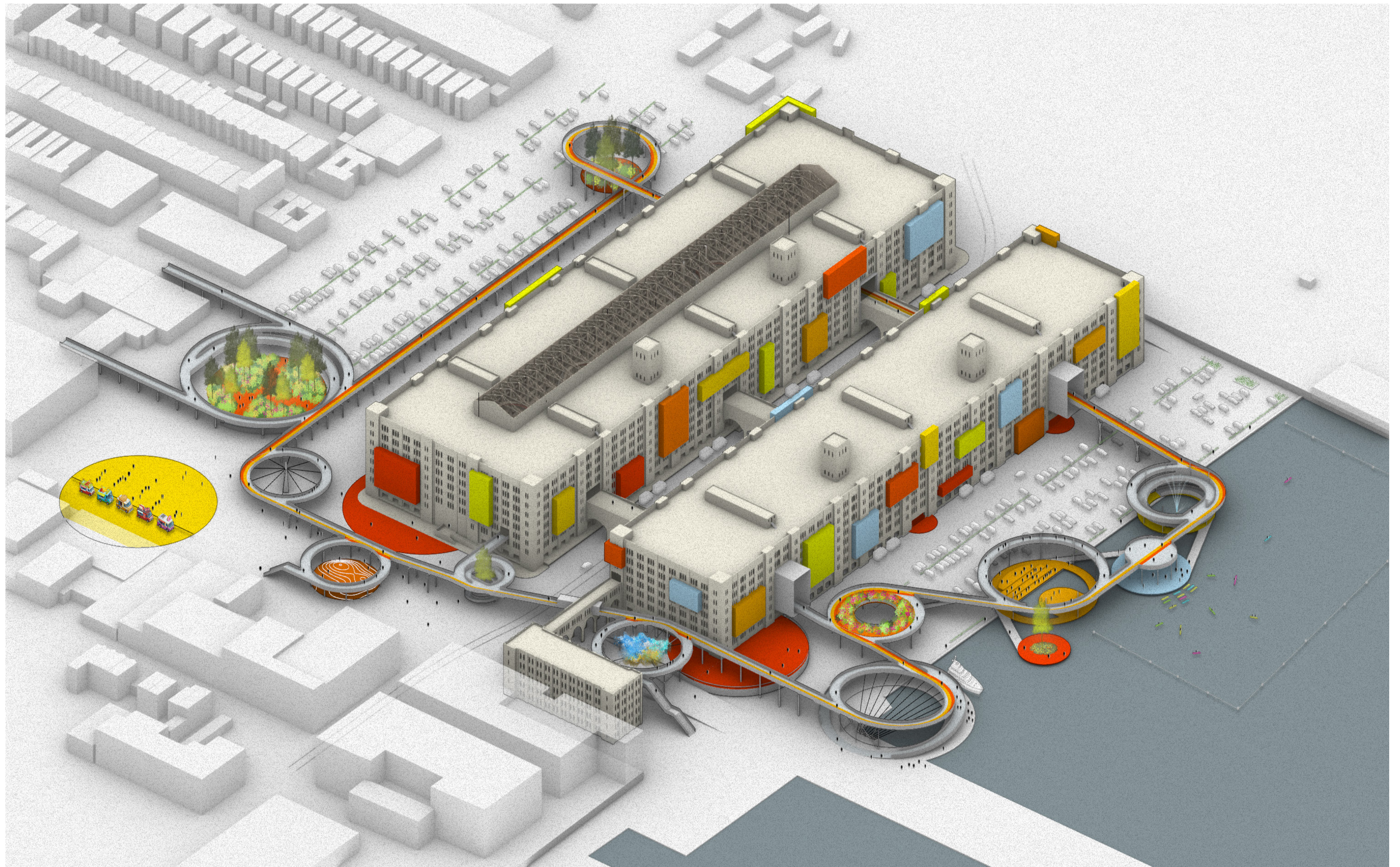
T (Travel): The existing BAT is connected by three bridges, so I want to strengthen this elevated movement further through the site, specifically from the community to the building then to the waterside.

Therefore, I mainly focus on the 3 moments in the project:

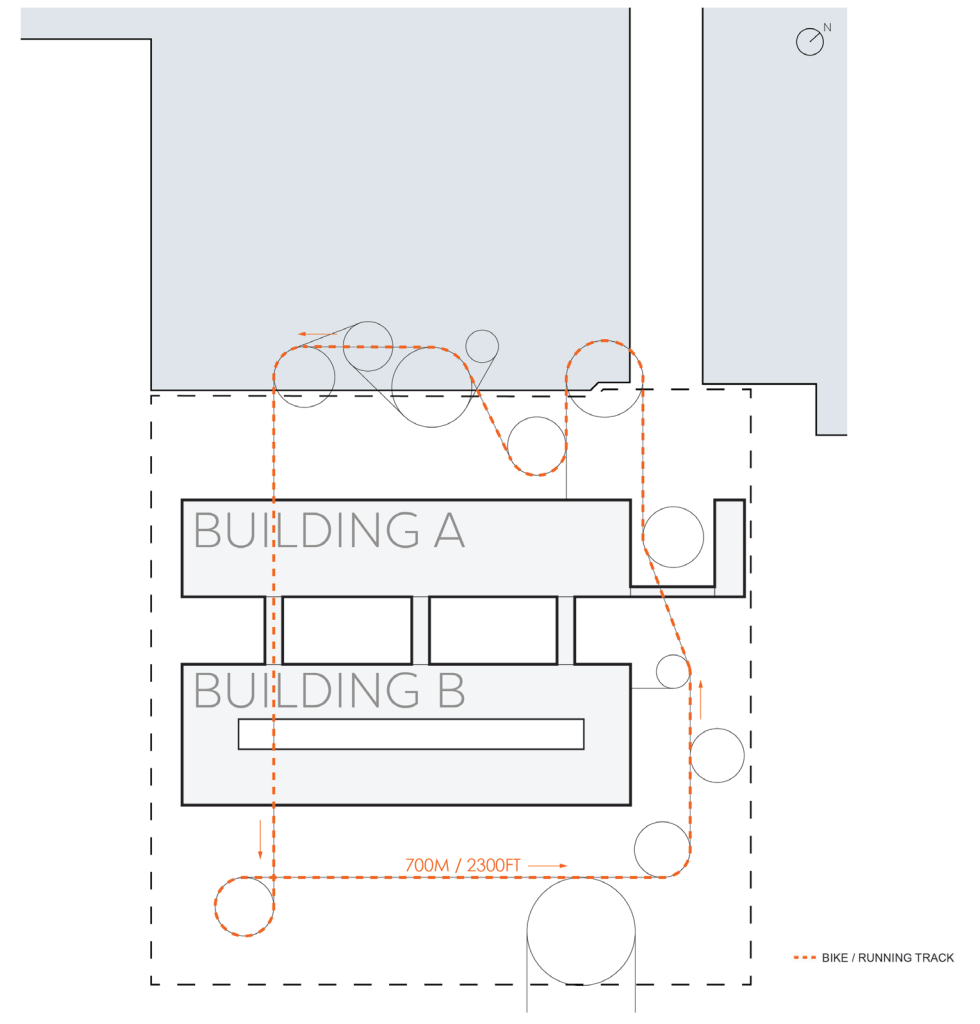
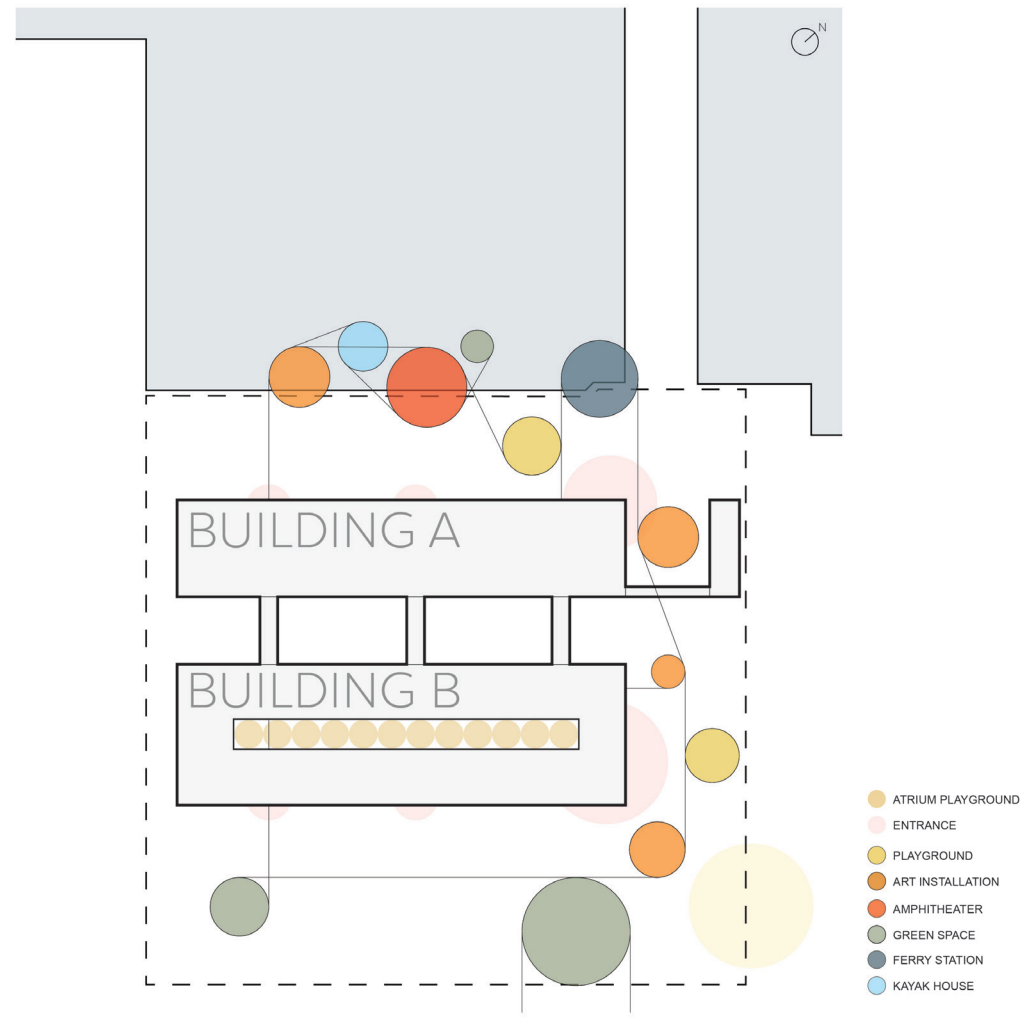
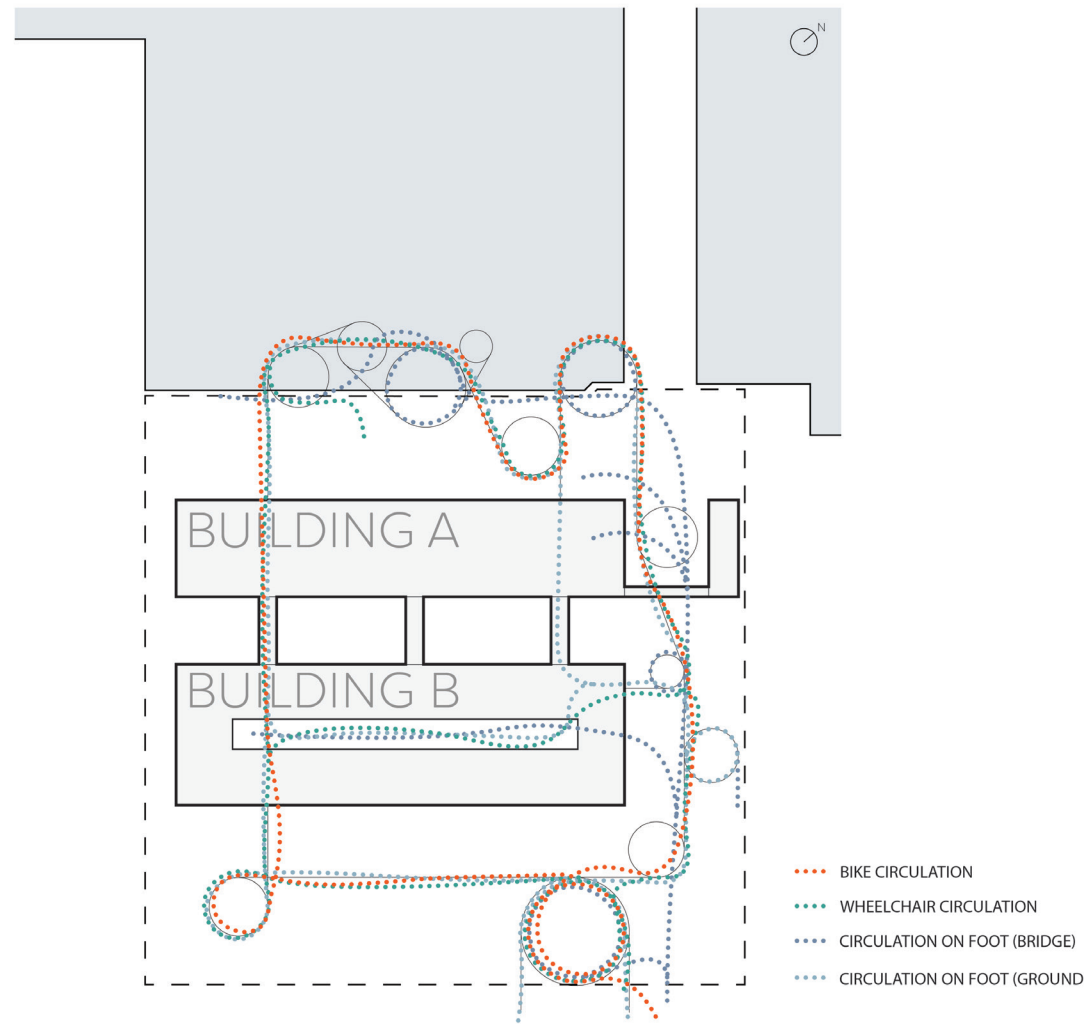
Bridges: Circle, as my main design elements in the site. It has a strong comparison to the BAT building itself, adding much vitality and creating a more continuous and fluid circulation to the project. Each circle is connected tangentially by bridges to create continuous flow for people accessing from the street to the water. The bridges also create a 700m/2300ft bike and running track crossing the building and site. The track has three paths and is 15ft in width totally. Inside each loop, there are different programs, including a ferry station, amphitheater, playground, kayak club, green space, etc.

Balcony: The balcony creates a playful resting area in the tenant space. The floor slabs are extended to the outside to create an outside semi-condition balcony, covered by metal punched panels.

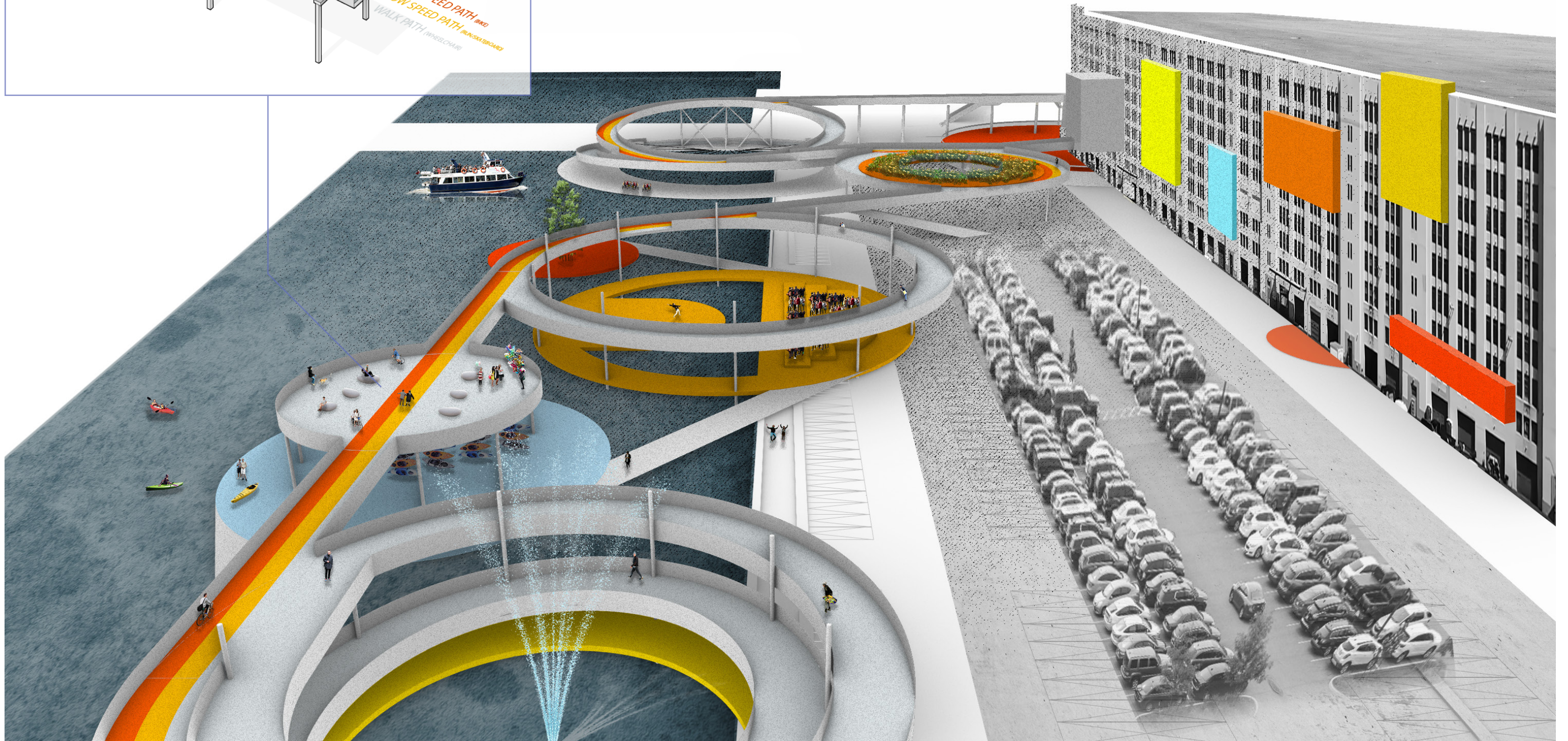
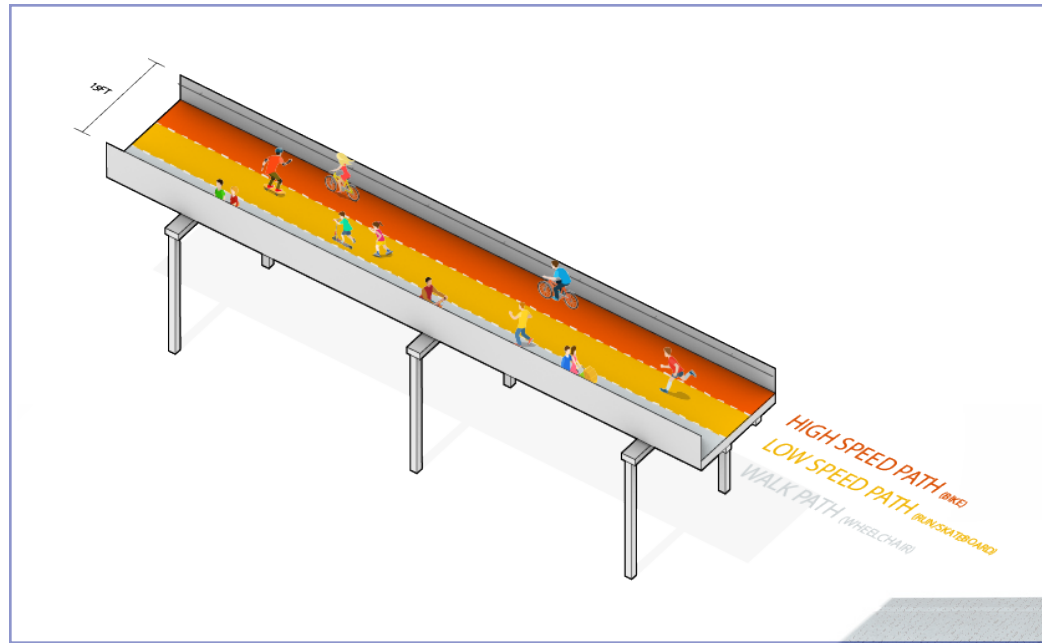
Atrium: In the atrium, there are two slides from the top floor to the ground level. The playground is partially elevated, and under the playground, there are stores and restaurants for the public. The form of the playground is inspired by the adventure playgrounds, in which people are free to climb and move the art pieces on the ground. Also, there is an art installation hanging in the air.



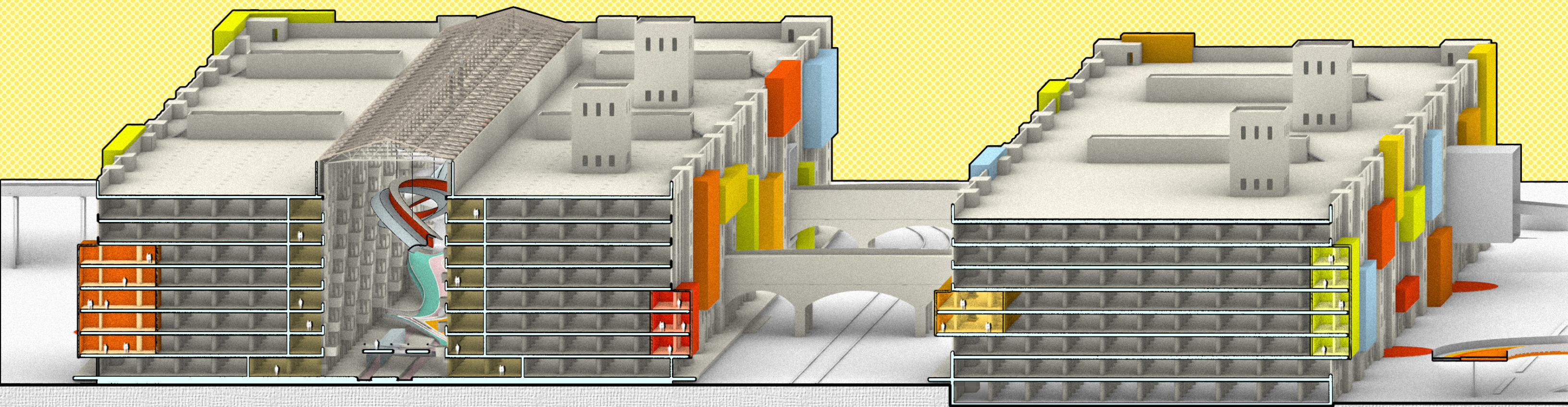
BRIDGES



BRIDGES



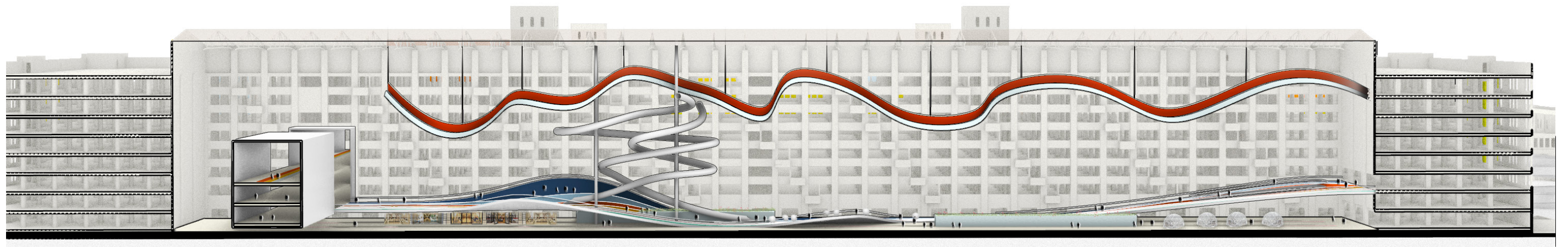
BALCANY



BALCANY



ATRIUM



ATRIUM

