

**AUCTION  
HOUSE**

**COPELANDS**

**AUCTION  
HOUSE**

**SOUTH YORKSHIRE**

**Wednesday 16th October  
2019**

**12.30pm**

The Copthorne Hotel  
Bramall Lane  
Sheffield  
S2 4SU

**Wednesday 16th October  
2019**

**7.00pm**

The Chesterfield Football Club  
The Proact Stadium  
1866 Sheffield Road  
Chesterfield  
S41 8NZ



# AUCTION VENUES

**SOUTH YORKSHIRE**  
**Wednesday**  
**16th October 2019**  
**12.30pm**

The Copthorne Hotel  
Bramall Lane  
Sheffield  
S2 4SU

---



**COPELANDS**  
**Wednesday**  
**16th October 2019**  
**7.00pm**

The Chesterfield Football Club  
The Proact Stadium  
1866 Sheffield Road  
Chesterfield S41 8NZ

---



Now Taking Entries for our next auction

**4th December 2019**

Please call for your free appraisal

**0124 623 2698**

**0114 223 0777**

AUCTION  
HOUSE

COPELANDS

AUCTION  
HOUSE

SOUTH YORKSHIRE

[auctionhouse.co.uk/copelands](http://auctionhouse.co.uk/copelands)  
[auctionhouse.co.uk/southyorkshire](http://auctionhouse.co.uk/southyorkshire)



# MESSAGE FROM THE AUCTIONEERS



**DAVID J TATE**

BSc MRICS

PRINCIPAL & AUCTIONEER



**MARCUS S LINSEY**

MSc BSc (Hons) MRICS

ASSOCIATE



**RICHARD A PRICE**

AUCTION CO-ORDINATOR



**ALEX CHAUNTRY**

AUCTION CO-ORDINATOR

## Our September auctions deliver outstanding results!

Our September auctions delivered a highly impressive set of results – across our two rooms, we had a combined sale success rate of 96.5%, and raised a total of over £925,000. Successful figures were also reported by other Auction House branches nationwide, and this shows that selling by auction continues to deliver outstanding results for our clients, and it is a positive sign that the auction method continues to be popular, despite the uncertainty for the weeks and months ahead.

All our entries in our October sale would make excellent investment opportunities – we have a vast range of entries on offer, including residential properties, commercial buildings, and land. They are all suitable for a wide range of purchasers, including the owner occupier or an investor, some with sitting tenants included.

If you have a property that you are looking to put onto the rental market, our dedicated lettings team would be more than happy to assist. Our lettings department always remains busy, and our Head of Lettings – Richard – can be contacted on 01246 232698, for further information.

Our final auction for 2019 shall be held on the 4th December, and entries are currently being invited. Our highly experienced and professional team specialise in the sale of a wide range of entries. If selling by auction is something that you are interested in, contact our auction team for more information, and to book your FREE market appraisal!

We hope you will be able to join us at our sale, however if you are unable to attend, you can place a proxy bid on any of our lots. Contact the team for further information.

To all our October buyers and sellers, we wish you the best of luck!

David J Tate

BSc MRICS

(Chartered Surveyor) (Registered Valuer) Principal and Auctioneer

**NEXT AUCTION DATE**

**4th December 2019**



# AUCTION INFORMATION



**Administration Charge** Purchasers will be required to pay by cheque or debit/credit card an administration charge of £950 (£791.67 + VAT payable to Copelands) or the fixed figure as stated in the property details, in addition to the deposit. A VAT receipt will be issued after the auction.



**Attending the Auction** It is always wise to allow sufficient time to get to the auction. Legal packs for most of the properties will be available for inspection. It is important you read these and the final addendum/amendment sheet which will also be available as any purchase will be subject to these.



**Bidding** Each property will be offered individually by the Auctioneer. Ensure that your bids are clear and noticed by the Auctioneer. If you are successful in bidding for the property you will be approached by a member of Auction House staff who will request your personal information and identification. You will then be guided to our administration area and then the cashier desk for payment of the deposit.



**Bidding by Proxy or Telephone** If you are unable to attend the auction you are invited to contact us to discuss special arrangements for bidding by proxy or telephone. A Non-Attending Bid or Telephone Bid form and conditions are included in auction catalogues or can be downloaded from the Bidding Form links on our website.



**Buyers Premium** Purchasers of some lots will be required to pay a Buyers Premium to the auctioneer in addition to the deposit – see individual property details.



**Deposit** When you sign the Memorandum of Sale you will be asked to pay a deposit of 10% of the purchase price subject to a minimum deposit of £6,000. Deposits can only be paid by electronic bank transfer, bankers draft, personal cheque, debit card, credit card or building society cheque. Cash payments will not be accepted. Please note, should the cheque have to be represented, a processing charge of £60.00 (£50.00 + VAT) will be charged by deduction from the deposit.



**Disbursements** Some disbursements may become payable by the purchaser on completion, these will be detailed in the Special Conditions of Sale within the property's Legal Pack.



**Disclaimer** Particulars on the website and within our catalogue are believed to be correct but their accuracy is not guaranteed. Information relating to Rating matters has been obtained by verbal enquiry only. Prospective purchasers are advised to make their own enquiries of the appropriate Authority. All measurements, areas and distances are approximate only. Potential purchasers are advised to check them.



**Energy Performance Certificates (EPCs)** Where required we include EPC ratings within Full Details and on the lot page within our catalogue. When available EPC Graphs can be viewed online at [auctionhouse.co.uk](http://auctionhouse.co.uk).



**General Data Protection Regulations (GDPR)** This defines new customer rights and company obligations introduced on 25th May 2018. For full details please refer to the Privacy Policy showing on our website [www.auctionhouse.co.uk/copelands](http://www.auctionhouse.co.uk/copelands) or [www.auctionhouse.co.uk/southyorkshire](http://www.auctionhouse.co.uk/southyorkshire).



**\*Guide Prices** Guide prices quoted online and in the catalogue are provided as an indication of each seller's minimum expectation. They are not necessarily figures which a property will sell for and may change at any time prior to the auction. The sale price will be dependent on bidding in the auction room and on the Vendors' instructions.



**Insurance** On some properties the seller will continue to insure through to completion. Others will need to be insured by the purchaser, and auctioneers advice to all purchasers is that they should consider insuring from the date of exchange.



**Plans, Maps and Photographs** The plans, floorplans, maps, photograph's and video tours published on our website and in the catalogue are to aid identification of the property only. The plans are not to scale.



**Pre Auction Sales** Offers made on property included in this auction may be accepted by the Vendor prior to the auction. In such instances all buyer charges will be payable including the Administration Charge, any Buyers Premium plus all other payments detailed in the Special Conditions of Sale. If you are intending to bid at the auction for a specific lot, we recommend that you keep in contact with the Auctioneer's office.

The Auctioneers or Vendors cannot be held responsible for costs incurred in respect of any lot which is withdrawn or sold prior to auction.



**Post Auction Sales** If a property you are interested in is not sold during the auction please speak to the Auctioneer and make an offer at, above or below the Guide. Your offer will be put forward to the Vendor and if accepted, you will be able to proceed with your purchase under auction rules. Offers should take into account the Administration Charge, any Buyers Premium plus all other payments detailed in the Special Conditions of Sale as all of these are still payable irrespective of the circumstances.



**Proof of Identification** In order to comply with Anti-Money Laundering regulations we ask that all prospective purchasers provide Proof of Identity and Residence. Please bring your passport or photographic UK driving licence and a recent utility bill, bank statement or council tax bill to the auction. If purchasing on behalf of a company you will also need a letter of authority on company letterhead. We will carry out Electronic AML checks on successful buyers and remote bidders. It will include a search with Experian who may check the details you supply against any particulars on any database (public or otherwise) to which they have access. They may also use your details in the future to assist other companies for verification purposes. A record of the search will be retained.



**Reserve Price** Each property will be offered subject to a reserve price which we expect will be set within the guide price range or no more than 10% above a single figure guide. This is a confidential figure set between the Vendor and the Auctioneer just prior to the auction. It is a figure below which the Auctioneer cannot sell the property during the auction. After the auction offers will be sought and considered on Unsold Lots at prices below the reserves.



**Solicitors Details** The name, address and telephone number of the solicitor who will be acting for you in any purchase will be required before you leave the auction room.



**The Catalogue** Details of the property and land to be sold are set out in our catalogue and on our website [auctionhouse.co.uk](http://auctionhouse.co.uk) All lots are sold subject to Special Conditions of Sale. It is important that prospective purchasers satisfy themselves as to the location, boundaries, condition and state of the lots before the auction.



**The Contract** The Memorandum of Sale will be signed in duplicate. One copy will be given to you, which you must give to your solicitor. The second copy will be retained by the Vendors' solicitor. Completion usually takes place after 28 days but this date can vary. The legal pack of each property will state the completion date due. The date may also be announced immediately prior to the commencement of bidding of each lot.



**The Legal Aspect** Buying at auction is a contractual commitment. Before making an offer prior to auction or bidding at the auction or post auction, it is advisable to consult a solicitor regarding the General and Special Conditions of Sale, the local authority search and other legal documentation.



**Viewing** Due to the nature and condition of auction properties we highlight the potential risk that viewing such properties carries and advise all to proceed with caution and take necessary requirements to ensure their own safety whilst viewing any lot in this catalogue. Viewings are conducted entirely at your own risk, these properties are not owned or controlled by Auction House and we cannot be held liable for loss or injury caused while viewing or accessing any Lot.

Due to the nature of some auction properties, electricity may not be turned on therefore viewing times are restricted. Viewers will also have to bring their own lighting/ladders if wanting to inspect cupboards, cellars and roof spaces.

\*\*\*Please refer to the common auction conditions included on our website or at the back of our catalogue\*\*\*

# INTRODUCING PARTNER AGENTS

 **BOTHAMS**  
MITCHELL SLANEY  
ESTATE AGENTS

**Fishwick & Co.**  
BUSINESS TRANSFERS & COMMERCIAL PROPERTY AGENTS

**HUNTERS**  
HERE TO GET YOU THERE

 **limeliving** | ESTATE AGENTS

 The  
**Property**  
**Buying**  
company™

**savills**

**Wilkins-Vardy**  
.co.uk

**md**  
Metcalf David Eyres  
SOLICITORS

J.A. Taft   
conveyancing

**Elliot Mather**  
Solicitors

**bannerjones**  
solicitors

**lupton**  
**fawcett**  
putting you ahead

**AUCTION  
HOUSE**

**COPELANDS**

**AUCTION  
HOUSE**

**SOUTH YORKSHIRE**

Bridge House, Hady Hill, Chesterfield S41 0DT

0124 623 2698 (Chesterfield) • 0114 223 0777 (Sheffield)

[chesterfield@auctionhouse.co.uk](mailto:chesterfield@auctionhouse.co.uk) • [sheffield@auctionhouse.co.uk](mailto:sheffield@auctionhouse.co.uk)

# ORDER OF SALE

**Wednesday 16th October 2019 12.30pm**

The Copthorne Hotel, Bramall Lane, Sheffield S2 4SU

LOT	ADDRESS	*GUIDE PRICE	LOT TYPE
1	21 Stuart Street, Thurnscoe, Rotherham, South Yorkshire	£38,000+	Residential
2	Apartment 904, Metis, 1 Scotland Street, Sheffield, South Yorkshire	£85,000	Residential
3	107 Queen Street, Swinton, Mexborough, South Yorkshire	£35,000	Residential
4	Apartment 905, Metis, 1 Scotland Street, Sheffield, South Yorkshire	£85,000	Residential
5	Laburnums, Barnsley Road, Brierley, Barnsley, South Yorkshire	£180,000	Residential
6	33 Princes Crescent, Edlington, Doncaster, South Yorkshire	£23,000	Residential

# ORDER OF SALE

**Wednesday 16th October 2019 7.00pm**

The Chesterfield Football Club, The Proact Stadium, 1866 Sheffield Road, Chesterfield S41 8NZ

LOT	ADDRESS	*GUIDE PRICE	LOT TYPE
1	30 Guildford Lane, Danesmoor, Chesterfield, Derbyshire	£30,000	Residential
2	131 Market Street, Clay Cross, Chesterfield, Derbyshire	£45,000	Mixed Use
3	Land To The Rear Of 52 Whittington Hill, Old Whittington, Chesterfield, Derbyshire	£3,500	Plots/Building Land
4	128, 130, 130A, 132, 132A, 134 and 134A High Street, Clay Cross, Chesterfield, Derbyshire	£150,000	Mixed Use
5	10 Hardwick House, Heath Road, Holmewood, Chesterfield, Derbyshire	£35,000	Residential
6	126 High Street, Clay Cross, Chesterfield, Derbyshire	£55,000	Commercial
7	138 and 138A High Street, Clay Cross, Chesterfield, Derbyshire	£35,000	Mixed Use

## LEGAL PACKS



We remind all prospective buyers that prior to auction day, the legal documents can be viewed at our offices, or online for free, thus making the process of purchasing at auction much easier and open to everyone.

We also offer a service for non attending bids by way of telephone or proxy if you cannot make the auction day.

Non Attending Bid Forms are included to the rear of this Catalogue.

**AUCTION  
HOUSE**

[auctionhouse.co.uk](http://auctionhouse.co.uk)

\*Description on Auction Information page

**Wednesday 16th October 2019**  
**12.30pm**

**AUCTION  
HOUSE**

**SOUTH YORKSHIRE**

**6 lots for sale by auction**

(unless previously sold or withdrawn)

The Copthorne Hotel  
Bramall Lane  
Sheffield  
S2 4SU





## 21 Stuart Street, Thurnscoe, Rotherham, South Yorkshire S63 0EF

**\*GUIDE PRICE: £38,000+ (plus fees)**



**An excellent opportunity to purchase a three bedroomed mid terraced house.**

The property benefits from uPVC double glazed windows, and gas fired central heating (not tested). The property requires a scheme of modernisation throughout, and is thought to be of interest to the owner occupier or investor, having a potential rental income in the order of £525 per calendar month (£6300 per annum).

### Description:

**Ground Floor:** An entrance porch leads to the kitchen, 4.8m x 2.9m, having front facing double glazed window, and a range of base and wall units with insert sink. Lounge, 4.8m x 3.4m, having front facing double glazed window and radiator. Separate WC, 1.4m x 1.1m, having WC only. A rear lean to leads to the enclosed rear garden.

**First Floor:** Bedroom One, 5.5m x 4.4m (maximum overall dimensions), having front and rear facing double glazed window, together with a radiator. Bedroom Two, 2.8m x 2.4m, having rear facing double glazed window and radiator. Bedroom Three, 3.4m x 2.7m, having front facing double glazed window and radiator. Bathroom, 2.9m x 1.3m, having a suite of sanitary fittings, comprising bath with overhead electric shower, pedestal wash hand basin, and WC.



**Tenure:** See Legal Pack

**Local Authority:** Barnsley Metropolitan Borough Council

**Solicitors:** Richard Pearlman LLP, Patman House, 23-27 Electric Parade, George Lane, London, E18 2LS. Tel: 020 7739 6100. Ref: Anthony Bloom.

**Energy Performance Certificate (EPC):** Current Rating C

### Additional Fees

**Buyer's Premium:** £1950 plus VAT (£2340 inc VAT), payable on exchange of contracts.

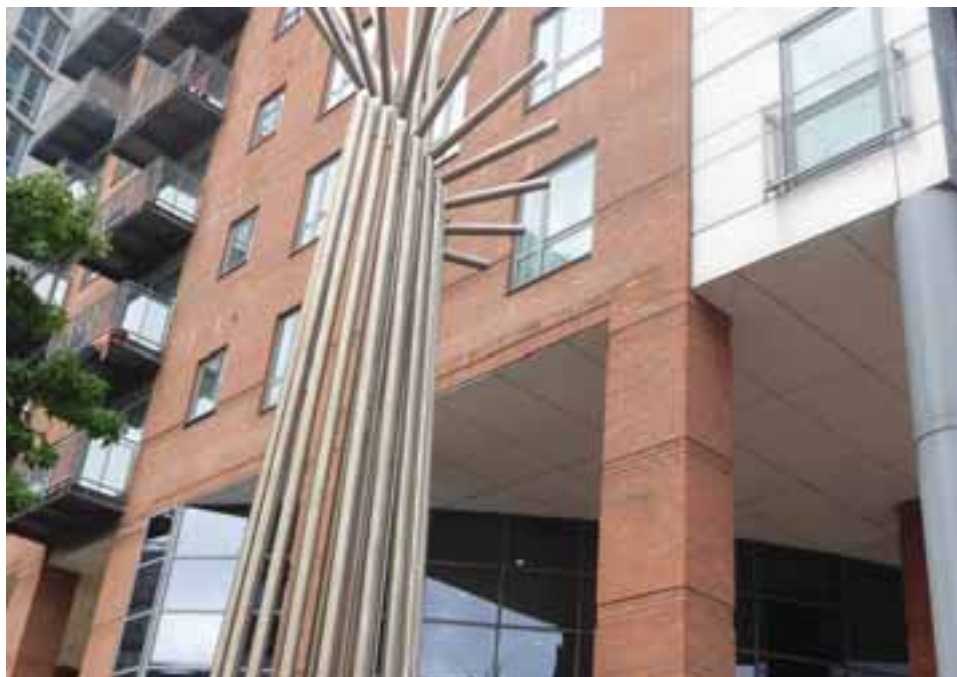
**Administration Charge:** £950 inc VAT payable on exchange of contracts.

**Disbursements:** Please see the legal pack for any disbursements listed that may become payable by the purchaser on completion.



# Apartment 904, Metis, 1 Scotland Street, Sheffield, South Yorkshire S3 7AT

\*GUIDE PRICE: **£85,000** (plus fees)



**A excellent opportunity to purchase a two bedroomed apartment on the ninth floor, of this sought after development in the hear of Sheffield City Centre.**

The apartment is double glazed and benefits from electric heaters (not tested). The property is thought to be of interest to the owner occupier or investor, having a potential rental income in the order of £800 per calendar month (£9600 per annum).

## Description:

**Accommodation:** Ground floor, having lift, and stairs which give access to all floors.

Ninth Floor: A hallway leads to the apartment, having an entrance door which leads to the open plan living space, incorporating the kitchen/dining room and lounge, and a sliding patio door leading to the balcony. There are two bedrooms, one with an en-suite, comprising of a shower cubicle, WC, and wash hand basin. There is also a separate main bathroom, having a suite of sanitary fittings, comprising of a bath with overhead mixer shower, vanity wash hand basin, and low flush WC.

**Outside:** We are informed that the apartment has a car parking space.

**Location:** The apartment is centrally located to Sheffield City Centre, having an excellent array of shopping, cultural, business, and transport facilities. Excellent transport links are easily available, with the super tram, bus and rail link in and out of the city. The apartment is close to the ring road leading to the M1 Motorway.

**Local Authority:** Sheffield City Council

**Solicitors:** TLT Solicitors, 101 Victoria Street, Bristol, BS1 6PU. Tel: 03330060339. Ref: Julia Seavill.

**Energy Performance Certificate (EPC):** Current Rating C

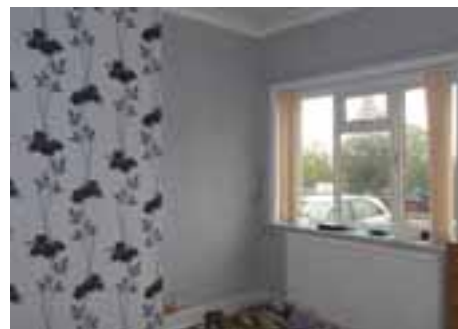
## Additional Fees

**Buyer's Premium:** £950 plus VAT (£1140 inc VAT), payable on exchange of contracts.

**Administration Charge:** £950 inc VAT payable on exchange of contracts.

**Disbursements:** Please see the legal pack for any disbursements listed that may become payable by the purchaser on completion.

## 107 Queen Street, Swinton, Mexborough, South Yorkshire S64 8NF

\*GUIDE PRICE: **£35,000** (plus fees)**An excellent opportunity to purchase a three bedroomed mid terraced house.**

The property benefits from gas fired central heating (not tested), and uPVC double glazed windows. The property requires a scheme of modernisation, and is thought to be of interest to the owner occupier or the investor, having a potential rental income in the order of £475 per calendar month (£5700 per annum).

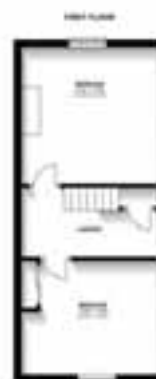
**Description:**

**Ground Floor:** A uPVC entrance door leads to the lounge, 3.8m x 3.8m, having front facing double glazed window and radiator. Dining Room, 3.6m x 3.8m, having rear facing double glazed window and radiator. Kitchen, 4.0m x 2.0m, having side facing double glazed window and side facing door, together with a range of base and wall units, including insert stainless steel sink and space for a gas cooker. Bathroom, 2.0m x 2.0m, having a shower cubicle, wash hand basin, and WC, together with a double glazed window.

**First Floor:** A flight of stairs leads to the first floor. Bedroom One, having front facing double glazed window and radiator. Bedroom Two, having rear facing double glazed window and radiator.

**Second Floor:** A further flight of stairs leads to the second floor, measuring 3.6m x 3.6m.

**Outside:** The outside sees an enclosed rear garden, laid mostly to lawn. There is also an open plan front yard, providing off street vehicular parking.



**Tenure:** See Legal Pack

**Local Authority:** Rotherham Metropolitan Borough Council

**Solicitors:** Wilsons Solicitors, 20 The Grove, Ilkley, LS29 9EG. Tel: 01943 602998. Ref: Roxanne Denton.

**Energy Performance Certificate (EPC):** Current Rating E

**Additional Fees**

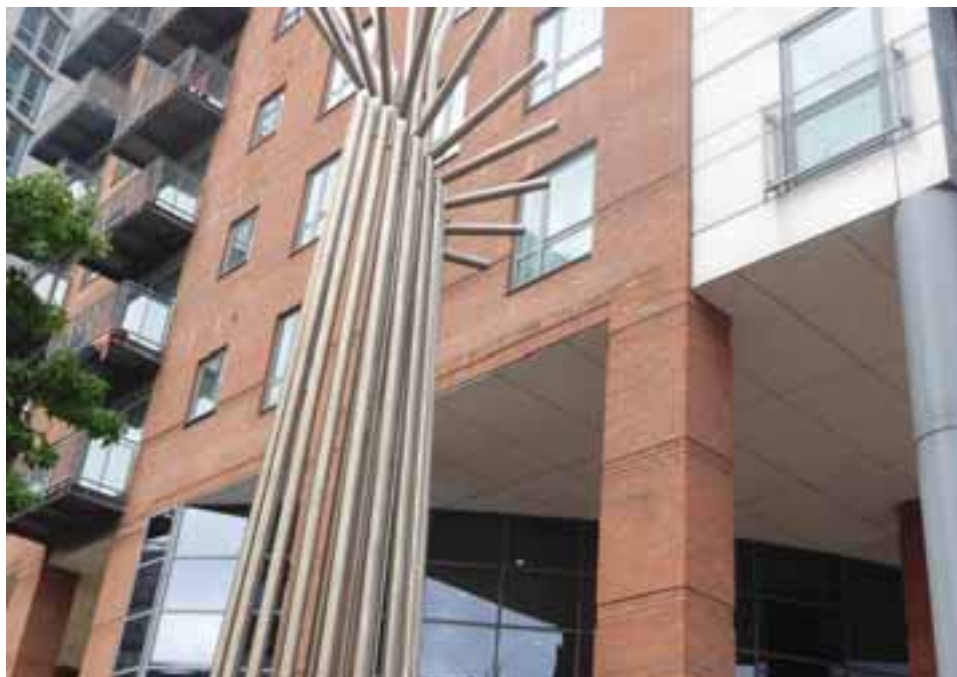
**Buyer's Premium:** £950 plus VAT (£1140 inc VAT), payable on exchange of contracts.

**Administration Charge:** £950 inc VAT, payable on exchange of contracts.

**Disbursements:** Please see the legal pack for any disbursements listed that may become payable by the purchaser on completion.

# Apartment 905, Metis, 1 Scotland Street, Sheffield, South Yorkshire S3 7AT

\*GUIDE PRICE: **£85,000** (plus fees)



**A excellent opportunity to purchase a two bedroomed apartment on the ninth floor, of this sought after development in the hear of Sheffield City Centre.**

The apartment is double glazed and benefits from electric heaters (not tested). The property is thought to be of interest to the owner occupier or investor, having a potential rental income in the order of £800 per calendar month (£9600 per annum).

## Description:

**Accommodation:** Ground floor, having lift, and stairs which give access to all floors.

Ninth Floor: A hallway leads to the apartment, having an entrance door which leads to the open plan living space, incorporating the kitchen/dining room and lounge, and a sliding patio door leading to the balcony. There are two bedrooms, one with an en-suite, comprising of a shower cubicle, WC, and wash hand basin. There is also a separate main bathroom, having a suite of sanitary fittings, comprising of a bath with overhead mixer shower, vanity wash hand basin, and low flush WC.

**Outside:** We are informed that the apartment has a car parking space.

**Location :** The apartment is centrally located to Sheffield City Centre, having an excellent array of shopping, cultural, business, and transport facilities. Excellent transport links are easily available, with the super tram, bus and rail link in and out of the city. The apartment is close to the ring road leading to the M1 Motorway.

**Local Authority:** Sheffield City Council

**Solicitors:** TLT Solicitors, 101 Victoria Street, Bristol, BS1 6PU. Tel: 03330060339. Ref: Julia Seavill.

**Energy Performance Certificate (EPC):** Current Rating C

## Additional Fees

**Buyer's Premium:** £950 plus VAT (£1140 inc VAT), payable on exchange of contracts.

**Administration Charge:** £950 inc VAT payable on exchange of contracts.

**Disbursements:** Please see the legal pack for any disbursements listed that may become payable by the purchaser on completion.



# Laburnums, Barnsley Road, Brierley, Barnsley, South Yorkshire S72 9LH

**\*GUIDE PRICE: £180,000 (plus fees)**



**An excellent opportunity to purchase a spacious four bedroomed detached property, requiring a scheme of modernisation.**

The property benefits from uPVC double glazing, gas fired central heating (not tested), and has the added benefit of a detached garage and off road parking. The property is believed to be of interest to the owner occupier or the investor.

## Description:

**Location :** The property is situated to the Brierley area of Barnsley which has all of the usual local amenities and facilities nearby.

**Ground Floor:** Entrance hall, 3.5m x 1.5m, having a double glazed entrance door leading to the main hall which provides access to the stairs and all rooms. Lounge, 3.5m x 7.4m, having generous space with vinyl finish flooring, gas fire (not tested), feature fire surround, wall mounted radiator, and uPVC double glazed windows. Dining Room, 3.6m x 5.9m, having wall mounted radiator and double glazed window. Kitchen/Dining Room, 5.2m x 5.7m, having a range of base and wall units, including integrated electric oven, four ring gas hob, insert sink and drainer. The walls are partly tiled with vinyl finished flooring, uPVC double glazed windows and a french door leading to the rear elevation. Utility Room, 2.6m x 2.8m, having double glazed window and access to the downstairs WC, being 2.0m x 1.0m.

**First Floor:** A flight of stairs leads to the first floor. Bedroom One, 3.3m x 6.0m, having wall mounted radiator and uPVC double glazed window. Bedroom Two, 3.0m x 5.1m, having vinyl finished flooring, wall mounted radiator, and uPVC double glazed window. Bedroom Three, 2.0m x 3.40m, having fitted carpets, uPVC double glazed window and wall mounted radiator. Bedroom Four, 3.6m x 5.1m, having fully fitted carpets, wall mounted radiator and uPVC double glazed window. Bathroom, 3.2m x 3.7m, having a four piece suite, comprising WC, wash hand basin, corner jacuzzi bath and a walk in shower, together with vinyl finished flooring, partially tiled walls, wall mounted radiator, and uPVC double glazed windows. There is also a separate WC which has vinyl finished flooring, low flush WC, wash hand basin and wall mounted radiator.

**Outside:** The outside sees off road parking to the front with a lawn area and access to the rear garden and a detached garage. To the rear elevation, there is a block paved area,

which leads to a mainly laid to lawn garden.

**Special Conditions of Sale:** Upon exchange of contracts, the purchaser shall pay to Auction House South Yorkshire the sum of £1140 inclusive of VAT, as the buyers premium.



**Tenure:** Freehold

**Local Authority:** Barnsley Metropolitan Borough Council

**Solicitors:** Eversheds LLP, 1 Callaghan Square, Cardiff, CF10 5BT. Tel: 02920 477242. Ref: Becky Wong.

**Energy Performance Certificate (EPC):** Current Rating D

## Additional Fees

**Buyer's Premium:** £950 plus VAT (£1140 inc VAT), payable on exchange of contracts.

**Administration Charge:** £950 inc VAT payable on exchange of contracts.

**Disbursements:** Please see the legal pack for any disbursements listed that may become payable by the purchaser on completion.



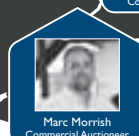
**Auction finance?**  
**Sit back, relax**  
**and we'll...**  
**make it happen**

- ☒ Auction Finance
- ☒ Refurbishment Projects
- ☒ Auction Purchase
- ☒ Development Funding
- ☒ Funds in 5 days
- ☒ 1-18 Month Facilities
- ☒ Investment & Personal Purchase

Call us today on **0151 639 7554** for hassle free fast access to finance  
[info@bridgingfinance-solutions.co.uk](mailto:info@bridgingfinance-solutions.co.uk) | [www.bridgingfinance-solutions.co.uk](http://www.bridgingfinance-solutions.co.uk)

# AUCTION HOUSE COMMERCIAL

Selling Commercial Lots  
at Better Prices to  
the Best Buyers



Call us now on **0345 8731366**

For more information visit our website [auctionhouse.co.uk/commercial](http://auctionhouse.co.uk/commercial)

## 33 Princes Crescent, Edlington, Doncaster, South Yorkshire DN12 1BA

\*GUIDE PRICE: **£23,000** (plus fees)



**An excellent opportunity to purchase a three bedroomed mid terraced house.**

The property requires a comprehensive scheme of refurbishment throughout, and is thought to be of interest to the investor or developer.

### Description:

**Ground Floor:** Open plan lounge/dining room, 7.6m x 3.9m. Kitchen, 3.8m x 1.9m. Bathroom, 2.4m x 1.9m.

**First Floor:** A flight of stairs leads to the first floor. Bedroom One, 4.3m x 3.9m. Bedroom Two, 3.2m x 3.1m. Bedroom Three, 2.7m x 1.9m.

**Outside:** The outside sees a small front yard, together with an enclosed rear yard.

**Location:** The property is located to the village of Edlington, which is ideally situated for local schools, transport links and shops.

**Special Conditions of Sale:** Upon exchange of contracts, the purchaser shall pay to Auction House South Yorkshire the sum of £1140 inclusive of VAT, as the buyers premium.



**Tenure:** See Legal Pack

**Local Authority:** Doncaster Metropolitan Borough Council

**Solicitors:** Shoosmiths LLP, 5-7 The Lakes, Northampton, NN4 7SH. Tel: 03700 863501. Ref: Clare Finn.

**Energy Performance Certificate (EPC):** Current Rating G

### Additional Fees

**Buyer's Premium:** £950 plus VAT (£1140 inc VAT), payable on exchange of contracts.

**Administration Charge:** £950 inc VAT payable on exchange of contracts.

**Disbursements:** Please see the legal pack for any disbursements listed that may become payable by the purchaser on completion.



**Wednesday 16th October 2019**  
**7.00pm**

**AUCTION  
HOUSE**

**COPELANDS**

**7 lots for sale by auction**

(unless previously sold or withdrawn)

The Chesterfield Football Club  
The Proact Stadium  
1866 Sheffield Road  
Chesterfield  
S41 8NZ





## 30 Guildford Lane, Danesmoor, Chesterfield, Derbyshire S45 9BP

\*GUIDE PRICE: **£30,000** (plus fees)



**An excellent opportunity to purchase a very well presented two bedroomed mid terraced house.**

The property is sold as an investment, let at £90 per week (£4680 per annum). The property has been let to the current tenant since April 2013, on an Assured Shorthold Tenancy Agreement. The property is believed to be ideal for the investor. An internal inspection is strongly recommended to appreciate the standards at which the property is being maintained.

### Description:

**Directions:** Enter Clay Cross via the A61 Derby Road, turning left onto Thanet Street and proceed for approximately one mile, and Guildford Lane is situated on the left hand side, and can clearly be identified by the for sale sign board.

**Ground Floor:** Lounge, 3.6m x 3.4m, having radiator. Dining Room, 3.7m x 3.6m, having useful under-stair store. Kitchen, 1.4m x 3.1m, having a range of wall and floor cupboards, stainless steel insert sink, space for cooker, and a rear entrance door.

**First Floor:** A flight of stairs leads to the first floor. Bedroom One, 3.6m x 3.4m. Bedroom Two, 2.8m x 3.7m. Shower Room, 1.9m x 2.0m, comprising WC, wash hand basin, and a shower.

**Outside:** The outside sees a small yard to the front, together with a garden to the rear.



**Tenure:** See Legal Pack

**Local Authority:** North East Derbyshire District Council

**Solicitors:** BRM Solicitors, Gray Court, 99 Saltergate, Chesterfield, S40 1LD. Tel: 01245 555111. Ref: Anna Gray

**Energy Performance Certificate (EPC):** Current Rating TBC

### Additional Fees

**Buyer's Premium:** 1.5% of the purchase price plus VAT, subject to a minimum fee of £1795 plus VAT, payable on completion.

**Administration Charge:** £950 inc VAT payable on exchange of contracts.

**Disbursements:** Please see the legal pack for any disbursements listed that may become payable by the purchaser on completion.

## 131 Market Street, Clay Cross, Chesterfield, Derbyshire S45 9LX

\*GUIDE PRICE: £45,000 (plus fees)



**An excellent opportunity to purchase a five bedroomed end terraced house, together with a substantial workshop to the rear, with a total of 1087 sq.ft.**

The property has previously been held as an investment, and would benefit from a scheme of modernisation, in order to bring it into a suitable condition. An inspection of the property is strongly recommended to appreciate the size of the accommodation on offer.

**Description:**

**Ground Floor:** A rear entrance door leads to the porch, 1.5m x 2.0m. Kitchen, 2.8m x 2.0m, having a range of wall and floor units, gas hob (not tested), and insert sink. Dining Room/Lounge, 3.2m x 5.9m (maximum overall dimensions). Bedroom One, 3.7m x 3.2m. Bedroom Four, 3.7m x 2.8m.

**First Floor:** A flight of stairs leads to the first floor landing, having WC. Bedroom Three, 3.4m x 3.8m. Bedroom Four, 2.9m x 3.7m. Bedroom Five, 3.7m x 4.1m. Bathroom, 3.2m x 1.6m (maximum overall dimensions), having bath, WC, and wash hand basin.

**Outside:** The outside sees an enclosed rear yard, together with a substantial workshop unit being 9.7m x 7.9m (approximately 824 sq.ft). The unit has a roller shutter door to the front, together with a side door. It appears to have a water supply, separate WC, and nine skylights. There are also two substantial steel RSJs. There is a further workshop area, being 4.9m x 5.0m (approximately 263 sq.ft), having window, two skylights, and former car pit. The total of the two outbuilding equates to approximately 1087 sq.ft.

**Special Conditions of Sale:** Upon exchange of contracts, the purchaser shall pay Auction House the sum of £360.00 (inclusive of VAT), for the auction searches.



GROUND FLOOR  
APPROXIMATE AREA  
1087 SQ. FT.  
(26.4 SQ. M.)

FIRST FLOOR  
APPROXIMATE AREA  
1087 SQ. FT.  
(26.4 SQ. M.)  
TOTAL APPROXIMATE FLOOR AREA 2174 SQ. FT.  
(200.8 SQ. M.)  
\*These measurements are approximate and should not be used for legal purposes. The purchaser should verify the measurements by a professional surveyor.

**Tenure:** See Legal Pack

**Local Authority:** North East Derbyshire District Council

**Solicitors:** Mulcahy Smith, 23 Regent Terrace, Gateshead, Tyne and Wear, NE8 1LU. Tel: 01909 490 1000. Ref: Gerard Blackburn.

**Energy Performance Certificate (EPC):** Current Rating D

**Additional Fees**

**Buyer's Premium:** 1.0% of the purchase price plus VAT (1.2% inc VAT), payable on completion.

**Administration Charge:** £950 inc VAT payable on exchange of contracts.

**Disbursements:** Please see the legal pack for any disbursements listed that may become payable by the purchaser on completion.

## Plots/Building Land

**Land To The Rear Of 52 Whittington Hill, Old Whittington, Chesterfield, Derbyshire S41 9HA**

**\*GUIDE PRICE:**

**£3,500** (plus fees)

**An excellent opportunity to purchase a parcel of land with planning permission for the erection of two single and two double concrete garages for personal use.**

This was granted by Chesterfield Borough Council (Planning Application: CHE/18/00492/FUL), in March 2019. It is understood that the consent has been granted for the erection of two single and two double garages. The proposed double garages measure 5.6m x 5.5m. The proposed single garages measure approximately 3.8m x 5.5m.

### Description:

**Directions:** Leave Chesterfield and enter towards Whittington Moor and at Whittington Moor roundabout take the B6052 Whittington Hill, turning left onto Holland Road and the land is immediately on the left hand side, and is accessed via an archway adjacent to 124 Whittington Hill.

### Additional Fees

**Buyer's Premium:** £1495 plus VAT (£1794 inc VAT), payable on completion.

**Administration Charge:** £950 inc VAT payable on exchange of contracts.

**Disbursements:** Please see the legal pack for any disbursements listed that may become payable by the purchaser on completion.



**Tenure:** See Legal Pack

**Local Authority:** Chesterfield Borough Council

**Solicitors:** J A Taft, 42 Clarence Road, Chesterfield, S40 1LQ. Tel: 01246 207101. Ref: Jamie Poole.

**Energy Performance Certificate (EPC):** Current Rating N/A

[auctionhouse.co.uk/copelands](http://auctionhouse.co.uk/copelands)

\*Description on Auction Information page

# Next Auction Date

# 4th December 2019

## NOW TAKING ENTRIES FOR THIS AUCTION

If you are thinking of selling at auction, one of our Auction valuers will be happy to offer you a free market appraisal and advice.

For further information please call Auction House on

# 0124 623 2698

# 0114 223 0777

**AUCTION  
HOUSE**

**COPELANDS**

**AUCTION  
HOUSE**

**SOUTH YORKSHIRE**



**128, 130, 130A, 132, 132A, 134 and 134A High Street, Clay Cross, Chesterfield, Derbyshire S45 9EE**

**\*GUIDE PRICE: £150,000** (plus fees)



**An excellent opportunity to purchase a parade of four former shops together with substantial workshop unit to the rear (approximately 2,000 sqft) with further two first floor flats together with one first floor office suite.**

The ground floor is partly known as 'Pops Attic'. The first floor flat 130A was previously let at £380 pcm. The offices 132A are let at a rental of £250 pcm and the flat 134A currently let at £172 pcm. The property thus has a current rental income in the order of £9,624 per annum. We are aware that some of the services supply differing properties in the parade. The property offers an opportunity for the investor or the owner occupier suitably to refurbish existing accommodation or carry out a suitable comprehensive redevelopment of the site.

### Description:

**128 High Street:** Communal entrance door, Lock-up Sales shop approximately 4.8m x 7.9m (maximum overall dimensions), Rear Store, Male and Female Toilets, Store Room One 3.4m x 2.1m, Store Room Two 3.4m x 2m, Rear Store/Unit 1.6m x 12.8m (maximum overall dimensions), Further Store 4.8m x 10m, Rear Entrance 5.7m x 4.3m having Kitchen area and double doors.

**130 High Street:** Entrance door. Shop front 7.8m x 3.3m, Rear Entrance Corridor leads to door at rear. Inner Hall WC.

**130A High Street:** Ground Floor – Communal entrance door between numbers 128 and 130 High Street. Stairs leads to First Floor Landing, Kitchen having a range of floor cupboards, Lounge, Bedroom One, Inner Corridor, Bedroom Two.

**132 High Street :** Shop 3.6m x 3.9m, Rear Storage Area, 2.7m x 2.1m, Kitchen, WC.

**132A High Street:** Leading to First Floor, Kitchen, separate WC, Four Offices. The property is let at £250 pcm (£3,000 per annum)

**134 High Street:** Fronted Shop 6m x 3.9m, Rear Sales Area 3.9m x 4.7m, Kitchen 2.4m x 1.5m, separate WC.

**134A High Street:** Stairs leads to the First Floor, Kitchen, Shower Room, WC, Basin, Lounge and Bedsitting Room. The property is currently let at £172 pcm. The tenant has been in occupation since 1992.

**Outside :** Sees 4 car parking spaces directly behind 134 High Street and a further 17 spaces of land to the rear of The Parade.





**Tenure:** See Legal Pack

**Local Authority:** North East Derbyshire District Council

**Solicitors:** Banner Jones Solicitors, 24 Glumangate, Chesterfield, S40 1UA. Tel: 01246 560560. Ref: Laura Barlow.

#### Additional Fees

**Buyer's Premium:** 1.5% of the purchase price plus VAT subject to a minimum fee of £1,495 plus vat (£1,794) payable on completion

**Administration Charge:** £950 inc VAT payable on exchange of contracts.

**Disbursements:** Please see the legal pack for any disbursements listed that may become payable by the purchaser on completion.

# 10 Hardwick House, Heath Road, Holmewood, Chesterfield, Derbyshire S42 5PL

**\*GUIDE PRICE: £35,000 (plus fees)**



## An excellent opportunity to purchase a modern ground floor apartment.

The property benefits from uPVC double glazed windows and an allocated parking space. The property is furnished throughout, and the contents of the property shall be included in the purchase price. The property is currently let on an Assured Shorthold Tenancy Agreement at £415 per calendar month (£4980 per annum), and the tenant has indicated that they wish to remain in occupation at the property for the foreseeable future. It is thought that the property will be of interest to the investor.

### Description:

**Accommodation:** A uPVC entrance door leads to the Reception Hallway with built in storage providing access to the Ground Floor Accommodation.

Lounge, 5.2m x 3.7m, being open plan to the kitchen, 2.3m x 2.2m, located to the front of the property having a modern fitted kitchen, including base and wall units, space for a fridge, plumbing for a washer/dryer, stainless steel insert sink and electric hob, front facing double glazed windows and wall mounted electric heaters. Bedroom One, 3.3m x 2.6m, having rear facing double glazed window, and electric mounted heater, and useful storage cupboard. Bathroom, 2.2m x 1.6m, having a partly tiled white suite, comprising bath with overhead mixer shower, wash hand basin, and WC.

**Outside:** The outside sees allocated parking to the rear.

**Location :** The property is located in the village of Holmewood, having all the usually local amenities and facilities having shops, schooling and transport links. The property is ideally situated for access to the M1 motorway network junction 29 providing easy access to Chesterfield Town Centre and neighbouring cities.

Ground Floor



**Tenure:** See Legal Pack

**Local Authority:** North East Derbyshire District Council

**Solicitors:** Waterfields Solicitors, 445 Roman Road, London, E3 5LX. Tel: 020 8981 4460. Ref: Gurmack Singh.

**Energy Performance Certificate (EPC):** Current Rating D

### Additional Fees

**Buyer's Premium:** £950 plus VAT (£1140 inc VAT), payable on completion.

**Administration Charge:** £950 inc VAT payable on exchange of contracts.

**Disbursements:** Please see the legal pack for any disbursements listed that may become payable by the purchaser on completion.

Rates from  
just 0.49%\*,  
with no  
valuation or  
lender legal  
fees?! \*\*



AUCTION  
HOUSE

That's worth shouting about. With more than 15 years' experience in auction finance, we'll work quickly and flexibly so you can complete within your deadline.

Call us on 0371 705 3873  
or find out more at  
[togetherness.co.uk/auction-finance](https://togetherness.co.uk/auction-finance)

Any property used as security, including your home, may be repossessed if you do not keep up repayments on your mortgage or any other debt secured on it.

\*Other fees and charges apply and are variable based on the loan amount. 0.49% pm is applicable for the duration of the loan. 12 months as standard. No exit fee applies. Standard construction only.

\*\*On loans up to £500,000 for residential properties only.

# Have you got a property to sell?

## PROPERTY TYPES IDEAL FOR AUCTION



Properties for  
Improvement



Tenanted  
Properties



Residential  
Investment



Development  
Propositions



Building  
Land



Mixed Use  
Properties



Commercial  
Investments



Unique  
Properties



Amenity Land &  
Other Property

Visit our website for more information on why  
Auction is the best option for your property

[auctionhouse.co.uk](https://www.auctionhouse.co.uk)

**AUCTION  
HOUSE**



## 126 High Street, Clay Cross, Chesterfield, Derbyshire S45 9EE

\*GUIDE PRICE: £55,000 (plus fees)



**An excellent opportunity to purchase a ground floor shop and office, with car parking to the rear, having shared access.**

The property has frontage onto High Street, and has previously been let to The Citizens Advice Bureau at a rent of £8,700 per annum. It is believed that the property would be of interest to the owner occupier or an investor. An internal inspection is highly recommended to appreciate the size of the accommodation on offer.

#### Description:

**Location :** Leave Clay Cross via the A61 Derby Road and proceed for approximately half a mile and the property is situated on the left hand side, and clearly identified by a For Sale sign board.

**Ground Floor :** A fire door provides access from the rear into the entrance corridor, having central heating radiator (not tested throughout), and doors to WC, which comprises of a WC, central heating radiator, electric hand dryer (not tested) and tiled walls. Interview Room 1, having central heating radiator and extractor fan. Training Room, having a blocked off door to the side, central heating radiators and door leading to the cellar. Storage Room 1, having window to the side and central heating radiator, Storage Room 2, having window to the rear and central heating radiator. Main Office/ Sales Area, having windows to the front, central heating radiator, and door opening to the pavement.

**First floor:** A flight of stairs rise from the main internal corridor up to the first floor landing, having radiators. Kitchen, having uPVC double glazed window to the rear, white wall and base units with work surfaces and space for fridge/ freezer, stainless steel single drainer sink unit, and radiator. Main Office, having uPVC double glazed windows to the front and central heating radiators. Office One, having uPVC double glazed windows to the side, and central heating radiator. Office Two, having uPVC double glazed windows to the rear and central heating radiator. Office Three, having uPVC double glazed windows and central heating radiator. Office Four, having central

heating radiator. Gents WC, having obscure window to the side, central heating radiator, electric hand dryer (not tested) WC, and wash hand basin. Ladies WC, having obscure window to the side, central heating radiator, wall mounted combination boiler (not tested), WC and vanity wash hand basin.

**Outside:** The outside sees a large parking area to the rear with shared access through the car park. The property is in reasonable condition throughout, and the property benefits from mains, gas, water, electricity and drainage services.



**Tenure:** See Legal Pack

**Local Authority:** North East Derbyshire District Council

**Solicitors:** Banner Jones Solicitors, 24 Glumangate, Chesterfield, S40 1UA. Tel: 01246 560560. Ref: Laura Barlow.

**Energy Performance Certificate (EPC):** Current Rating TBC

#### Additional Fees

**Buyer's Premium:** 1.5% of the purchase price plus VAT, subject to a minimum fee of £1495 plus VAT, payable on completion.

**Administration Charge:** £950 inc VAT payable on exchange of contracts.

**Disbursements:** Please see the legal pack for any disbursements listed that may become payable by the purchaser on completion.

# 138 and 138A High Street, Clay Cross, Chesterfield, Derbyshire S45 9EG

\*GUIDE PRICE: **£35,000** (plus fees)



**An excellent opportunity to purchase a ground floor lock up sale shop, which is currently let at £4200 per annum, together with a vacant first and second floor two bedroomed apartment, previously let at £4800 per annum.**

The property thus has a potential rental income in the order of £9000 per annum.

## Description:

**138 High Street:** Front sales area, 7.5m x 3.8m, having uPVC double glazed entrance door, window to the front, and central heating radiator. A number of steps leads to the small lobby area and stairs leading to the cellar. Rear storage room, 3.3m x 3.8m, having uPVC double glazed window to the rear and built in storage cupboard, together with a central heating radiator. Kitchen, 3.1m x 2.2m (maximum overall dimensions), having uPVC double glazed window and door to the rear, together with a central heating radiator. WC, having low flush WC and small wash hand basin. The rear entrance door is accessed from the kitchen.

**138A High Street:** A two bedroomed first and second floor residential flat, accessed via the service road to the rear of the shops. A ground floor wooden glazed entrance door leads into a small vestibule with stairs rising to the first floor. Bathroom, 2.1m x 1.5m, having a coloured suite with a small panelled bath with mixer shower over and glass shower screen, pedestal wash hand basin and WC, together with a central heating radiator and tiled splash-backs. Kitchen, 3.3m x 2.5m, having double glazed window to the rear, wall and base cupboards with work surfaces and tiled splash-backs, space for a cooker and fridge/freezer, stainless steel single drainer sink unit, central heating radiator, and laminate wooden flooring.

A flight of stairs leads to the second floor. Landing, having central heating radiator and two built in storage cupboards. Lounge, 5.7m x 3.8m, having uPVC double glazed windows to the front, central heating radiator, TV aerial point, wooden fire surround and hearth (no fire). Bedroom One, 4.8m x

3.8m, having uPVC double glazed window to the front and central heating radiator. Bedroom Two, 3.8m x 2.9m, having uPVC double glazed window to the rear and central heating radiator. The outside sees a small yard to the rear.



**Tenure:** See Legal Pack

**Local Authority:** North East Derbyshire District Council

**Solicitors:** Banner Jones Solicitors, 24 Glumangate, Chesterfield, S40 1UA. Tel: 01246 560560. Ref: Laura Barlow.

## Additional Fees

**Buyer's Premium:** 1.5% of the purchase price plus VAT, subject to a minimum fee of £1495 plus VAT, payable on completion.

**Administration Charge:** £950 inc VAT payable on exchange of contracts.

**Disbursements:** Please see the legal pack for any disbursements listed that may become payable by the purchaser on completion.

# LEGAL PACKS



We remind all prospective buyers that prior to auction day, the legal documents can be viewed at our offices, or online for free, thus making the process of purchasing at auction much easier and open to everyone.

We also offer a service for non attending bids by way of telephone or proxy if you cannot make the auction day. Non Attending Bid Forms are included to the rear of this Catalogue.

**AUCTION  
HOUSE**

[auctionhouse.co.uk](http://auctionhouse.co.uk)

## Want to receive **Newsletter & Property Alerts**



Visit [auctionhouse.co.uk/alerts.aspx](http://auctionhouse.co.uk/alerts.aspx) to register

**AUCTION  
HOUSE**

[auctionhouse.co.uk](http://auctionhouse.co.uk)

DO YOU HAVE A PROPERTY  
SUITABLE FOR AUCTION?

**WE ARE NOW  
TAKING ENTRIES  
FOR OUR NEXT  
AUCTION**

**AUCTION  
HOUSE**

**COPELANDS**

**AUCTION  
HOUSE**

**SOUTH YORKSHIRE**

For all enquiries or a valuation contact

**0124 623 2698 or 0114 223 0777**

[chesterfield@auctionhouse.co.uk](mailto:chesterfield@auctionhouse.co.uk) or [sheffield@auctionhouse.co.uk](mailto:sheffield@auctionhouse.co.uk)



# NON-ATTENDING BID OR TELEPHONE BID

Please also sign and return the reverse side of this form



## AUTHORISATION FOR BIDDING BY PROXY OR TELEPHONE

Full Name (s):

Name of Company (if applicable):

Home or Company (address):  Postcode:

Tel:  Mobile:

Email:

Hereby authorise Auction House to bid on my behalf by proxy / telephone (delete as applicable) bid for the property detailed below.

I confirm that I have read and understood the General Conditions of Sale and signed the Conditions of Bidding by Proxy or Telephone set out overleaf.

## PROPERTY AND BID DETAILS

Lot No.:  Property Address:

My maximum bid (proxy bids only) will be: £

(amount in words):

## DEPOSIT (tick as applicable)

☐

I attach a cheque for 10% of my proxy bid or £6000, whichever is the greater, plus Administration Charge of £950 (£791.67 + VAT payable to Copelands). Plus Buyers Premium if applicable.

OR

☐

I attach a blank cheque to be completed by the Auctioneer if my bid is successful, within which he will include an Administration fee of £950 (£791.67 + VAT).

My cheque of £  payable to COPELANDS (amount if applicable)

I hereby authorise Auction House to undertake Proof of Identification checks using the information provided.

Date of Birth  Period living at current address  NI Number

Passport Number

Driving Licence Number

Previous address if less than 6 months

## SOLICITORS

My solicitors are:

Of (address):

Postcode:

Tel:  Person Acting:

If my bid is successful, I authorise the Auctioneer to sign the Memorandum of Sale on my behalf and recognise that I will be the legally bound purchaser of the property referred to above and must complete the purchase of the property within the time specified in the General/Special Conditions of Sale.

Signed:  Date:

**PLEASE MARK THE ENVELOPE EITHER PROXY OR TELEPHONE BID**

## TERMS AND CONDITIONS FOR TELEPHONE BIDS AND BIDDING BY LETTER

Anyone not able to attend the auction and wishing to make a bid for any property,  
do so on the following terms and conditions:

1. The bidder must complete a separate authority form for each Lot involved, and provide a bankers draft, solicitor's client's account cheque or personal cheque for 10% of the maximum amount of the bid for each Lot. Please note the minimum deposit for any bid is £6,000 PER LOT.
2. The bidder must upload Proof of Identity in the form of a scan of a driving licence or passport, and a scan of a utility bill to the Auctions Passport Service that accesses the property's Legal Pack. Also you authorise Auction House to undertake a search with Experian for the purpose of verifying your identity. To do so Experian may check the details you supply against any particulars on any database (public or otherwise) to which they have access. They may also use your details in the future to assist other companies for verification purposes. A record of the search will be retained.
3. The form must be sent to, or delivered to: Copelands, Bridge House, Hady Hill, Chesterfield S41 0DT to arrive before 6pm two working days prior to the start of the auction. It is the bidders responsibility to check that the form is received by Auction House and this can be done by telephoning the office.
4. In the case of a telephone bid the prospective purchaser should provide a blank cheque in the name of the purchaser which the Auctioneer will complete on behalf of the prospective purchaser if the prospective purchaser is successful in purchasing the relevant property for 10% of the purchase price, plus the administration charge or in accordance with the General or Special Conditions of Sale relating to the lot.
5. The bidder shall be deemed to have read the "Important Notice to be read by all bidders"; the particulars of the relevant Lot in the catalogue the general and special conditions of sale. The bidder shall be deemed to have taken all necessary professional and legal advice and to have made enquiries and have knowledge of any announcements to be made from the rostrum of any amendments relating to the relevant Lot. Announcements can and should be checked by bidders on the day before the auction. However, the Auctioneers will advise the bidders of any announcements as soon as possible prior to the Auction.
6. In the case of a written bid, Auction House staff will compete in the bidding up to the maximum of the authorisation. If no maximum is inserted, Auction House reserve the right not to bid.
7. Auction House reserve the right not to bid on behalf of written bidders, in the event of any error, doubt, omission, uncertainty as to the bid, any failure to validate Proof of Identification, or for any reason whatsoever and give no warranty, or guarantee, that a bid would be made on behalf of the bidder and accept no liability.
8. In the event that the written or telephone bid is successful, the Auctioneer will sign the Memorandum of the Contract on behalf of the bidder (a Contract would have been formed on the fall of the hammer).
9. In the event of a Contract, the deposit monies will be applied so far as necessary to meet the requirement for a 10% deposit (minimum £6,000) and the balance of the deposit (if any) will be held by the vendors solicitor pending completion. An Administration charge of £950 (£791.67 plus VAT payable to Copelands) should be provided on a separate cheque made payable to Copelands.
10. In the event that the bidder is unsuccessful in gaining the Contract, the deposit monies shall be returned to the bidder promptly.
11. The Auctioneer will make no charge to a prospective purchaser for this service and will accept no liability whatsoever for any bid not being made on behalf of the prospective purchaser whether through lack of clarity of instructions or for any other reason whatsoever. Prospective telephone purchasers will not hold Auction House liable for any loss or claims relating to the telephone bidding system. The prospective purchaser will be advised if the relevant lot has been successfully purchased on his behalf as soon as possible after the auction. Where the lot has not been purchased the prospective purchaser will be notified by post and the deposit returned as soon as reasonably possible.
12. Once delivered to the Auctioneers, the authority to bid is binding on the bidder on the day on which the particular Lot is auctioned. This is to allow for the possibility of a Vendor agreeing to sell post auction where the bidding has not reached the reserve.
13. The authority can only be withdrawn by notification in writing delivered to Auction House at their office two hours before the start of the auction on the day the relevant Lot is scheduled to be auctioned, or by delivery into the hands of the Auctioneer in the auction room half-an-hour before the start of that day's auction. It is the bidders responsibility to obtain a receipt on a copy of the withdrawal notification signed by one of the Auctioneers and without such a receipt the authority stands, any successful Contract is binding on the bidder.
14. If the bidder, or an agent, actually bids at the auction without having previously withdrawn the authority, the Auctioneer is at liberty to accept such bid in addition to any bid from Auction House staff as empowered under the written authority. Auction House will have no liability whatsoever if the price achieved is the result only of this competition in bidding without intervention from other bidders.
15. Prospective purchasers are advised in respect of telephone bids should they become disconnected during bidding or are unobtainable, Auction House will not be held responsible or liable for any loss suffered in respect thereof. I hereby confirm that I have read and understood the above terms and conditions to bid by letter.

Signed: ..... Date: .....

Please sign this page and ensure the form overleaf is completed

# MEMORANDUM OF SALE



Property Address:

Lot No.

Price:

The Vendor:

The Purchaser:

Post Code:

Tel:

It is agreed that the Vendor sells and the Purchaser buys the property described in the accompanying particulars and \*conditions of sale subject to their provisions and the terms and stipulations in them at the price above mentioned.

Purchase Price:

£

Less Deposit:

£

Balance:

£

Dated:

Completion Date:

Signed:

Authorised Agent for Vendor

As Agents for the Vendor we acknowledge receipt of the deposit in the form

of:

Dated:

Signed:

The Purchaser

Purchasers Solicitor:

Post Code:

Tel:

Vendors Solicitor:

Post Code:

Tel:

\* For the purpose of this contract, the conditions of sale include the three sections of the RICS Common Auction Conditions, the Glossary, Conduct of the Auction and the General Conditions.

In addition and at the same time, the purchaser is required to pay by cheque or debit/credit card to the Auctioneer an Administration Charge of £950 (£791.67 + VAT plus Buyers Premium if applicable. Please make cheques payable to Copelands.

# COMMON AUCTION CONDITIONS (EDITION 3)

REPRODUCED WITH THE CONSENT OF THE RICS

## INTRODUCTION

The Common Auction Conditions have been produced for real estate auctions in England and Wales to set a common standard across the industry. They are in three sections:

### GLOSSARY

The glossary gives special meanings to certain words used in both sets of conditions..

### AUCTION CONDUCT CONDITIONS

The Auction Conduct Conditions govern the relationship between the auctioneer and anyone who has a catalogue, or who attends or bids at the auction. They cannot be changed without the auctioneer's agreement.

### SALE CONDITIONS

The Sale Conditions govern the agreement between each seller and buyer. They include general conditions of sale and template forms of special conditions of sale, tenancy and arrears schedules and a sale memorandum.

### IMPORTANT NOTICE

A prudent buyer will, before bidding for a lot at an auction:

- take professional advice from a conveyancer and, in appropriate cases, a chartered surveyor and an accountant;
- read the conditions;
- inspect the lot;
- carry out usual searches and make usual enquiries;
- check the content of all available leases and other documents relating to the lot;
- check that what is said about the lot in the catalogue is accurate;
- have finance available for the deposit and purchase price;
- check whether VAT registration and election is advisable;

The conditions assume that the buyer has acted like a prudent buyer.

If you choose to buy a lot without taking these normal precautions you do so at your own risk.

## GLOSSARY

This glossary applies to the auction conduct conditions and the sale conditions.

Wherever it makes sense:

- singular words can be read as plurals, and plurals as singular words;
- a "person" includes a corporate body;
- words of one gender include the other genders;
- references to legislation are to that legislation as it may have been modified or re-enacted by the date of the auction or the contract date (as applicable); and
- where the following words are printed in bold type they have the specified meanings.

### Actual completion date

The date when completion takes place or is treated as taking place for the purposes of apportionment and calculating interest.

### Addendum

An amendment or addition to the conditions or to the particulars or to both whether contained in a supplement to the catalogue, a written notice from the auctioneers or an oral announcement at the auction.

### Agreed completion date

Subject to condition G9.3:

- (a) the date specified in the special conditions; or
  - (b) if no date is specified, 20 business days after the contract date;
- but if that date is not a business day the first subsequent business day.

### Approved financial institution

Any bank or building society that has signed up to the Banking Code or Business Banking Code or is otherwise acceptable to the auctioneers.

### Arrears

Arrears of rent and other sums due under the tenancies and still outstanding on the actual completion date.

### Arrears schedule

The arrears schedule (if any) forming part of the special conditions.

### Auction

The auction advertised in the catalogue.

### Auction conduct conditions

The conditions so headed, including any extra auction conduct conditions.

### Auctioneers

The auctioneers at the auction.

### Business day

Any day except (a) a Saturday or a Sunday; (b) a bank holiday in England and Wales; or (c) Good Friday or Christmas Day.

### Buyer

The person who agrees to buy the lot or, if applicable, that person's personal representatives: if two or more are jointly the buyer their obligations can be enforced against them jointly or against each of them separately.

### Catalogue

The catalogue to which the conditions refer including any supplement to it.

### Completion

Unless otherwise agreed between seller and buyer (or their conveyancers) the occasion when both seller and buyer have complied with their obligations under the contract and the balance of the price is unconditionally received in the seller's conveyancer's client account.

### Condition

One of the auction conduct conditions or sales conditions.

### Contract

The contract by which the seller agrees to sell and the buyer agrees to buy the lot.

### Contract date

The date of the auction or, if the lot is not sold at the auction:

- (a) the date of the sale memorandum signed by both the seller and buyer; or
- (b) if contracts are exchanged, the date of exchange. If exchange is not effected in person or by an irrevocable agreement to exchange made by telephone, fax or electronic mail the date of exchange is the date on which both parts have been signed and posted or otherwise placed beyond normal retrieval.

### Documents

Documents of title (including, if title is registered, the entries on the register and the title plan) and other documents listed or referred to in the special conditions relating to the lot.

### Financial charge

A charge to secure a loan or other financial indebtedness (not including a rentcharge).

### General conditions

That part of the sale conditions so headed, including any extra general conditions.

### Interest rate

If not specified in the special conditions, 4% above the base rate from time to time of Barclays Bank plc. (The interest rate will also apply to judgment debts, if applicable.)

### Lot

Each separate property described in the catalogue or (as the case may be) the property that the seller has agreed to sell and the buyer to buy (including chattels, if any).

### Old arrears

Arrears due under any of the tenancies that are not "new tenancies" as defined by the Landlord and Tenant (Covenants) Act 1995.

### Particulars

The section of the catalogue that contains descriptions of each lot (as varied by any addendum).

### Practitioner

An insolvency practitioner for the purposes of the Insolvency Act 1986 (or, in relation to jurisdictions outside the United Kingdom, any similar official).

### Price

The price that the buyer agrees to pay for the lot.

### Ready to complete

Ready, willing and able to complete: if completion would enable the seller to discharge all financial charges secured on the lot that have to be discharged by completion, then those outstanding financial charges do not prevent the seller from being ready to complete.

### Sale conditions

The general conditions as varied by any special conditions or addendum.

### Sale memorandum

The form so headed (whether or not set out in the catalogue) in which the terms of the contract for the sale of the lot are recorded.

### Seller

The person selling the lot. If two or more are jointly the seller their obligations can be enforced against them jointly or against each of them separately.

### Special conditions

Those of the sale conditions so headed that relate to the lot.

### Tenancies

Tenancies, leases, licences to occupy and agreements for lease and any documents varying or supplemental to them.

### Tenancy schedule

The tenancy schedule (if any) forming part of the special conditions.

### Transfer

Transfer includes a conveyance or assignment (and "to transfer" includes "to convey" or "to assign").

### TUPE

The Transfer of Undertakings (Protection of Employment) Regulations 2006.

### VAT

Value Added Tax or other tax of a similar nature.

### VAT option

An option to tax.

### We (and us and our)

The auctioneers.

### You (and your)

Someone who has a copy of the catalogue or who attends or bids at the auction, whether or not a buyer.

## AUCTION CONDUCT CONDITIONS

### A1 INTRODUCTION

A1.1 Words in bold type have special meanings, which are defined in the Glossary.

A1.2 The catalogue is issued only on the basis that you accept these auction conduct conditions. They govern our relationship with you and cannot be disappplied or varied by the sale conditions (even by a condition purporting to replace the whole of the Common Auction Conditions). They can be varied only if we agree.

### A2 OUR ROLE

A2.1 As agents for each seller we have authority to:

- (a) prepare the catalogue from information supplied by or on behalf of each seller;
- (b) offer each lot for sale;
- (c) sell each lot;
- (d) receive and hold deposits;
- (e) sign each sale memorandum; and
- (f) treat a contract as repudiated if the buyer fails to sign a sale memorandum or pay a deposit as required by these auction conduct conditions.

A2.2 Our decision on the conduct of the auction is final.

A2.3 We may cancel the auction, or alter the order in which lots are offered for sale. We may also combine or divide lots. A lot may be sold or withdrawn from sale prior to the auction.

A2.4 You acknowledge that to the extent permitted by law we owe you no duty of care and you have no claim against us for any loss.

### A3 BIDDING AND RESERVE PRICES

A3.1 All bids are to be made in pounds sterling exclusive of any applicable VAT.

A3.2 We may refuse to accept a bid. We do not have to explain why.

A3.3 If there is a dispute over bidding we are entitled to resolve it, and our decision is final.

A3.4 Unless stated otherwise each lot is subject to a reserve price (which may be fixed just before the lot is offered for sale). If no bid equals or exceeds that reserve price the lot will be withdrawn from the auction.

A3.5 Where there is a reserve price the seller may bid (or ask us or another agent to bid on the seller's behalf) up to the reserve price but may not make a bid equal to or exceeding the reserve price. You accept that it is possible that all bids up to the reserve price are bids made by or on behalf of the seller.

A3.6 Where a guide price (or range of prices) is given that guide is the minimum price at which, or range of prices within which, the seller might be prepared to sell at the date of the guide price. But guide prices may change. The last published guide price will normally be at or above any reserve price, but not always – as the seller may fix the final reserve price just before bidding commences

### A4 THE PARTICULARS AND OTHER INFORMATION

A4.1 We have taken reasonable care to prepare particulars that correctly describe each lot. The particulars are based on information supplied by or on behalf of the seller. You need to check that the information in the particulars is correct.



# COMMON AUCTION CONDITIONS (EDITION 3)

REPRODUCED WITH THE CONSENT OF THE RICS

A4.2 If the **special conditions** do not contain a description of the **lot**, or simply refer to the relevant **lot** number, you take the risk that the description contained in the **particulars** is incomplete or inaccurate, as the **particulars** have not been prepared by a conveyancer and are not intended to form part of a legal contract.

A4.3 The **particulars** and the **sale conditions** may change prior to the **auction** and it is **your** responsibility to check that **you** have the correct versions.

A4.4 If **we** provide information, or a copy of a document, provided by others **we** do so only on the basis that **we** are not responsible for the accuracy of that information or document.

## A5 THE CONTRACT

A5.1 A successful bid is one **we** accept as such (normally on the fall of the hammer). This **condition** A5 applies to **you** if **you** make the successful bid for a **lot**.

A5.2 **You** are obliged to buy the **lot** on the terms of the **sale memorandum** at the **price** **you** bid plus **VAT** (if applicable).

A5.3 **You** must before leaving the **auction**:

- (a) provide all information **we** reasonably need from **you** to enable **us** to complete the **sale memorandum** (including proof of your identity if required by **us**);
- (b) sign the completed **sale memorandum**; and
- (c) pay the deposit.

A5.4 If **you** do not **we** may either:

- (a) as agent for the **seller** treat that failure as **your** repudiation of the **contract** and offer the **lot** for sale again: the **seller** may then have a claim against **you** for breach of contract; or
- (b) sign the **sale memorandum** on **your** behalf.

A5.5 **The deposit**:

- (a) is to be held as stakeholder where **VAT** would be chargeable on the deposit were it to be held as agent for the **seller**, but otherwise is to be held as stated in the **sale conditions**; and
- (b) must be paid in pounds sterling by cheque or by bankers' draft made payable to **us** on an **approved financial institution**. The extra auction conduct conditions may state if **we** accept any other form of payment.

A5.6 **We** may retain the **sale memorandum** signed by or on behalf of the **seller** until the deposit has been received in cleared funds.

A5.7 If the **buyer** does not comply with its obligations under the **contract** then:

- (a) **you** are personally liable to buy the **lot** even if **you** are acting as an agent; and
- (b) **you** must indemnify the **seller** in respect of any loss the **seller** incurs as a result of the **buyer's** default.

A5.8 Where the **buyer** is a company **you** warrant that the **buyer** is properly constituted and able to buy the **lot**.

## A6 EXTRA AUCTION CONDUCT CONDITIONS

A6.1 Despite any **special condition** to the contrary the minimum deposit **we** accept is £3,000 (or the total **price**, if less). A **special condition** may, however, require a higher minimum deposit.

## GENERAL CONDITIONS OF SALE

Words in **bold type** have special meanings, which are defined in the Glossary

### G1. THE LOT

G1.1 The **lot** (including any rights to be granted or reserved, and any exclusions from it) is described in the **special conditions**, or if not so described the **lot** is that referred to in the **sale memorandum**.

G1.2 The **lot** is sold subject to any **tenancies** disclosed by the **special conditions**, but otherwise with vacant possession on **completion**.

G1.3 The **lot** is sold subject to all matters contained or referred to in the **documents**, but excluding any **financial charges**: these the **seller** must discharge on or before **completion**.

G1.4 The **lot** is also sold subject to such of the following as may affect it, whether they arise before or after the **contract date** and whether or not they are disclosed by the **seller** or are apparent from inspection of the **lot** or from the **documents**:

- (a) matters registered or capable of registration as local land charges;
- (b) matters registered or capable of registration by any competent authority or under the provisions of any statute;
- (c) notices, orders, demands, proposals and requirements of any competent authority;
- (d) charges, notices, orders, restrictions, agreements and other matters relating to town and country planning, highways or public health;
- (e) rights, easements, quasi-easements, and wayleaves;
- (f) outgoing and other liabilities;
- (g) any interest which overrides, within the meaning of the Land Registration Act 2002;
- (h) matters that ought to be disclosed by the searches and enquiries a prudent buyer would make, whether or not the **buyer** has made them; and
- (i) anything the **seller** does not and could not reasonably know about.

G1.5 Where anything subject to which the **lot** is sold would expose the **seller** to liability the **buyer** is to comply with it and indemnify the **seller** against that liability.

G1.6 The **seller** must notify the **buyer** of any notices, orders, demands, proposals and requirements of any competent authority of which it learns after the **contract date** but the **buyer** must comply with them and keep the **seller** indemnified.

G1.7 The **lot** does not include any tenant's or trade fixtures or fittings.

G1.8 Where chattels are included in the **lot** the **buyer** takes them as they are at **completion** and the **seller** is not liable if they are not fit for use.

G1.9 The **buyer** buys with full knowledge of:

- (a) the **documents**, whether or not the **buyer** has read them; and
- (b) the physical condition of the **lot** and what could reasonably be discovered on inspection of it, whether or not the **buyer** has inspected it.

G1.10 The **buyer** is not to rely on the information contained in the **particulars** but may rely on the **seller's** conveyancer's written replies to preliminary enquiries to the extent stated in those replies.

### G2. DEPOSIT

G2.1 The amount of the deposit is the greater of:

- (a) any minimum deposit stated in the **auction conduct conditions** (or the total **price**, if this is less than that minimum); and
- (b) 10% of the **price** (exclusive of any **VAT** on the **price**).

G2.2 The deposit

- (a) must be paid in pounds sterling by cheque or banker's draft drawn on an **approved financial institution** (or by any other means of payment that the **auctioneers** may accept); and
- (b) is to be held as stakeholder unless the **auction conduct conditions** provide that it is to be held as agent for the **seller**.

G2.3 Where the **auctioneers** hold the deposit as stakeholder they are authorised to release it (and interest on it if applicable) to the **seller** on **completion** or, if **completion** does not take place, to the person entitled to it under the **sale conditions**.

G2.4 If a cheque for all or part of the deposit is not cleared on first presentation the **seller** may treat

the **contract** as at an end and bring a claim against the **buyer** for breach of contract.

G2.5 Interest earned on the deposit belongs to the **seller** unless the **sale conditions** provide otherwise.

### G3. BETWEEN CONTRACT AND COMPLETION

G3.1 Unless the **special conditions** state otherwise, the **seller** is to insure the **lot** from and including the **contract date** to **completion** and:

- (a) produce to the **buyer** on request all relevant insurance details;
  - (b) pay the premiums when due;
  - (c) if the **buyer** so requests, and pays any additional premium, use reasonable endeavours to increase the sum insured or make other changes to the policy;
  - (d) at the request of the **buyer** use reasonable endeavours to have the **buyer's** interest noted on the policy if it does not cover a contracting purchaser;
  - (e) unless otherwise agreed, cancel the insurance at **completion**, apply for a refund of premium and (subject to the rights of any tenant or other third party) pay that refund to the **buyer**; and
  - (f) (subject to the rights of any tenant or other third party) hold on trust for the **buyer** any insurance payments that the **seller** receives in respect of loss or damage arising after the **contract date** or assign to the **buyer** the benefit of any claim;
- and the **buyer** must on **completion** reimburse to the **seller** the cost of that insurance (to the extent not already paid by the **buyer** or a tenant or other third party) for the period from and including the **contract date** to **completion**.

G3.2 No damage to or destruction of the **lot** nor any deterioration in its condition, however caused, entitles the **buyer** to any reduction in **price**, or to delay **completion**, or to refuse to complete.

G3.3 Section 47 of the Law of Property Act 1925 does not apply.

G3.4 Unless the **buyer** is already lawfully in occupation of the **lot** the **buyer** has no right to enter into occupation prior to **completion**.

### G4. TITLE AND IDENTITY

G4.1 Unless **condition** G4.2 applies, the **buyer** accepts the title of the **seller** to the **lot** as at the **contract date** and may raise no requisition or objection except in relation to any matter that occurs after the **contract date**.

G4.2 If any of the **documents** is not made available before the **auction** the following provisions apply:

- (a) The **buyer** may raise no requisition on or objection to any of the **documents** that is made available before the **auction**.
- (b) If the **lot** is registered land the **seller** is to give to the **buyer** within five **business days** of the **contract date** an official copy of the entries on the register and title plan and, where noted on the register, of all documents subject to which the **lot** is being sold.
- (c) If the **lot** is not registered land the **seller** is to give to the **buyer** within five **business days** an abstract or epitome of title starting from the root of title mentioned in the **special conditions** (or, if none is mentioned, a good root of title more than fifteen years old) and must produce to the **buyer** the original or an examined copy of every relevant document.
- (d) If title is in the course of registration, title is to consist of certified copies of:
  - (i) the application for registration of title made to the land registry;
  - (ii) the **documents** accompanying that application;
  - (iii) evidence that all applicable stamp duty land tax relating to that application has been paid; and
  - (iv) a letter under which the **seller** or its conveyancer agrees to use all reasonable endeavours to answer any requisitions raised by the land registry and to instruct the land registry to send the completed registration documents to the **buyer**.
- (e) The **buyer** has no right to object to or make requisitions on any title information more than seven **business days** after that information has been given to the **buyer**.

G4.3 Unless otherwise stated in the **special conditions** the **seller** sells with full title guarantee except that (and the **transfer** shall so provide):

- (a) the covenant set out in section 3 of the Law of Property (Miscellaneous Provisions) Act 1994 shall not extend to matters recorded in registers open to public inspection; these are to be treated as within the actual knowledge of the **buyer**; and
- (b) the covenant set out in section 4 of the Law of Property (Miscellaneous Provisions) Act 1994 shall not extend to any condition or tenant's obligation relating to the state or condition of the **lot** where the **lot** is leasehold property.

G4.4 The **transfer** is to have effect as if expressly subject to all matters subject to which the **lot** is sold under the **contract**.

G4.5 The **seller** does not have to produce, nor may the **buyer** object to or make a requisition in relation to, any prior or superior title even if it is referred to in the **documents**.

G4.6 The **seller** (and, if relevant, the **buyer**) must produce to each other such confirmation of, or evidence of, their identity and that of their mortgagees and attorneys (if any) as is necessary for the other to be able to comply with applicable Land Registry Rules when making application for registration of the transaction to which the **conditions** apply.

### G5. TRANSFER

G5.1 Unless a form of **transfer** is prescribed by the **special conditions**:

- (a) the **buyer** must supply a draft **transfer** to the **seller** at least ten **business days** before the **agreed completion date** and the engrossment (signed as a deed by the **buyer** if **condition** G5.2 applies) five **business days** before that date or (if later) two **business days** after the draft has been approved by the **seller**; and
- (b) the **seller** must approve or revise the draft **transfer** within five **business days** of receiving it from the **buyer**.

G5.2 If the **seller** remains liable in any respect in relation to the **lot** (or a **tenancy**) following **completion** the **buyer** is specifically to covenant in the **transfer** to indemnify the **seller** against that liability.

G5.3 The **seller** cannot be required to **transfer** the **lot** to anyone other than the **buyer**, or by more than one **transfer**.

### G6. COMPLETION

G6.1 **Completion** is to take place at the offices of the **seller's** conveyancer, or where the **seller** may reasonably require, on the **agreed completion date**. The **seller** can only be required to complete on a **business day** and between the hours of 0930 and 1700.

G6.2 The amount payable on **completion** is the balance of the **price** adjusted to take account of apportionments plus (if applicable) **VAT** and interest.

G6.3 Payment is to be made in pounds sterling and only by:

- (a) direct transfer to the **seller's** conveyancer's client account; and
- (b) the release of any deposit held by a stakeholder.

G6.4 Unless the **seller** and the **buyer** otherwise agree, **completion** cannot take place until both have complied with their obligations under the **contract** and the balance of the **price** is unconditionally received in the **seller's** conveyancer's client account.

G6.5 If **completion** takes place after 1400 hours for a reason other than the **seller's** default it is to be treated, for the purposes of apportionment and calculating interest, as if it had taken place on the next **business day**.

G6.6 Where applicable the **contract** remains in force following **completion**.

# COMMON AUCTION CONDITIONS (EDITION 3)

REPRODUCED WITH THE CONSENT OF THE RICS

## G7. NOTICE TO COMPLETE

G7.1 The seller or the buyer may on or after the agreed completion date but before completion give the other notice to complete within ten business days (excluding the date on which the notice is given) making time of the essence.

G7.2 The person giving the notice must be ready to complete.

G7.3 If the buyer fails to comply with a notice to complete the seller may, without affecting any other remedy the seller has:

- (a) terminate the contract;
- (b) claim the deposit and any interest on it if held by a stakeholder;
- (c) forfeit the deposit and any interest on it;
- (d) resell the lot; and
- (e) claim damages from the buyer.

G7.4 If the seller fails to comply with a notice to complete the buyer may, without affecting any other remedy the buyer has:

- (a) terminate the contract; and
- (b) recover the deposit and any interest on it from the seller or, if applicable, a stakeholder.

## G8. IF THE CONTRACT IS BROUGHT TO AN END

If the contract is lawfully brought to an end:

- (a) the buyer must return all papers to the seller and appoints the seller its agent to cancel any registration of the contract; and
- (b) the seller must return the deposit and any interest on it to the buyer (and the buyer may claim it from the stakeholder, if applicable) unless the seller is entitled to forfeit the deposit under condition G7.3.

## G9. LANDLORD'S LICENCE

G9.1 Where the lot is or includes leasehold land and licence to assign is required this condition G9 applies.

G9.2 The contract is conditional on that licence being obtained, by way of formal licence if that is what the landlord lawfully requires.

G9.3 The agreed completion date is not to be earlier than the date five business days after the seller has given notice to the buyer that licence has been obtained.

G9.4 The seller must:

- (a) use all reasonable endeavours to obtain the licence at the seller's expense; and
- (b) enter into any authorised guarantee agreement properly required.

G9.5 The buyer must:

- (a) promptly provide references and other relevant information; and
- (b) comply with the landlord's lawful requirements.

G9.6 If within three months of the contract date (or such longer period as the seller and buyer agree) the licence has not been obtained the seller or the buyer may (if not then in breach of any obligation under this condition G9) by notice to the other terminate the contract at any time before licence is obtained. That termination is without prejudice to the claims of either seller or buyer for breach of this condition G9.

## G10. INTEREST AND APPORTIONMENTS

G10.1 If the actual completion date is after the agreed completion date for any reason other than the seller's default the buyer must pay interest at the interest rate on the price (less any deposit paid) from the agreed completion date up to and including the actual completion date.

G10.2 Subject to condition G11 the seller is not obliged to apportion or account for any sum at completion unless the seller has received that sum in cleared funds. The seller must pay to the buyer after completion any sum to which the buyer is entitled that the seller subsequently receives in cleared funds.

G10.3 Income and outgoings are to be apportioned at actual completion date unless:

- (a) the buyer is liable to pay interest; and
  - (b) the seller has given notice to the buyer at any time up to completion requiring apportionment on the date from which interest becomes payable by the buyer;
- in which event income and outgoings are to be apportioned on the date from which interest becomes payable by the buyer.

G10.4 Apportionments are to be calculated on the basis that:

- (a) the seller receives income and is liable for outgoings for the whole of the day on which apportionment is to be made;
- (b) annual income and expenditure accrues at an equal daily rate assuming 365 days in a year, and income and expenditure relating to some other period accrues at an equal daily rate during the period to which it relates; and
- (c) where the amount to be apportioned is not known at completion apportionment is to be made by reference to a reasonable estimate and further payment is to be made by seller or buyer as appropriate within five business days of the date when the amount is known.

## G11. ARREARS

### Part 1 Current rent

G11.1 "Current rent" means, in respect of each of the tenancies subject to which the lot is sold, the instalment of rent and other sums payable by the tenant in advance on the most recent rent payment date on or within four months preceding completion.

G11.2 If on completion there are any arrears of current rent the buyer must pay them, whether or not details of those arrears are given in the special conditions.

G11.3 Parts 2 and 3 of this condition G11 do not apply to arrears of current rent.

### Part 2 Buyer to pay for arrears

G11.4 Part 2 of this condition G11 applies where the special conditions give details of arrears.

G11.5 The buyer is on completion to pay, in addition to any other money then due, an amount equal to all arrears of which details are set out in the special conditions.

G11.6 If those arrears are not old arrears the seller is to assign to the buyer all rights that the seller has to recover those arrears.

### Part 3 Buyer not to pay for arrears

G11.7 Part 3 of this condition G11 applies where the special conditions:

- (a) so state; or
- (b) give no details of any arrears.

G11.8 While any arrears due to the seller remain unpaid the buyer must:

- (a) try to collect them in the ordinary course of management but need not take legal proceedings or forfeit the tenancy;
- (b) pay them to the seller within five business days of receipt in cleared funds (plus interest at the interest rate calculated on a daily basis for each subsequent day's delay in payment);
- (c) on request, at the cost of the seller, assign to the seller or as the seller may direct the right to demand and sue for old arrears, such assignment to be in such form as the seller's conveyancer may reasonably require;
- (d) if reasonably required, allow the seller's conveyancer to have on loan the counterpart of any tenancy against an undertaking to hold it to the buyer's order;

(e) not without the consent of the seller release any tenant or surety from liability to pay arrears or accept a surrender of or forfeit any tenancy under which arrears are due; and

(f) if the buyer disposes of the lot prior to recovery of all arrears obtain from the buyer's successor in title a covenant in favour of the seller in similar form to part 3 of this condition G11.

G11.9 Where the seller has the right to recover arrears it must not without the buyer's written consent bring insolvency proceedings against a tenant or seek the removal of goods from the lot.

## G12. MANAGEMENT

G12.1 This condition G12 applies where the lot is sold subject to tenancies.

G12.2 The seller is to manage the lot in accordance with its standard management policies pending completion.

G12.3 The seller must consult the buyer on all management issues that would affect the buyer after completion (such as, but not limited to, an application for licence; a rent review; a variation, surrender, agreement to surrender or proposed forfeiture of a tenancy; or a new tenancy or agreement to grant a new tenancy) and:

- (a) the seller must comply with the buyer's reasonable requirements unless to do so would (but for the indemnity in paragraph (c)) expose the seller to a liability that the seller would not otherwise have, in which case the seller may act reasonably in such a way as to avoid that liability;
- (b) if the seller gives the buyer notice of the seller's intended act and the buyer does not object within five business days giving reasons for the objection the seller may act as the seller intends; and
- (c) the buyer is to indemnify the seller against all loss or liability the seller incurs through acting as the buyer requires, or by reason of delay caused by the buyer.

## G13. RENT DEPOSITS

G13.1 This condition G13 applies where the seller is holding or otherwise entitled to money by way of rent deposit in respect of a tenancy. In this condition G13 "rent deposit deed" means the deed or other document under which the rent deposit is held.

G13.2 If the rent deposit is not assignable the seller must on completion hold the rent deposit on trust for the buyer and, subject to the terms of the rent deposit deed, comply at the cost of the buyer with the buyer's lawful instructions.

G13.3 Otherwise the seller must on completion pay and assign its interest in the rent deposit to the buyer under an assignment in which the buyer covenants with the seller to:

- (a) observe and perform the seller's covenants and conditions in the rent deposit deed and indemnify the seller in respect of any breach;
- (b) give notice of assignment to the tenant; and
- (c) give such direct covenant to the tenant as may be required by the rent deposit deed.

## G14. VAT

G14.1 Where a sale condition requires money to be paid or other consideration to be given, the payer must also pay any VAT that is chargeable on that money or consideration, but only if given a valid VAT invoice.

G14.2 Where the special conditions state that no VAT option has been made the seller confirms that none has been made by it or by any company in the same VAT group nor will be prior to completion.

## G15. TRANSFER AS A GOING CONCERN

G15.1 Where the special conditions so state:

- (a) the seller and the buyer intend, and will take all practicable steps (short of an appeal) to procure, that the sale is treated as a transfer of a going concern; and
- (b) this condition G15 applies.

G15.2 The seller confirms that the seller

- (a) is registered for VAT, either in the seller's name or as a member of the same VAT group; and
- (b) has (unless the sale is a standard-rated supply) made in relation to the lot a VAT option that remains valid and will not be revoked before completion.

G15.3 The buyer confirms that:

- (a) it is registered for VAT, either in the buyer's name or as a member of a VAT group;
- (b) it has made, or will make before completion, a VAT option in relation to the lot and will not revoke it before or within three months after completion;
- (c) article 5(2B) of the Value Added Tax (Special Provisions) Order 1995 does not apply to it; and
- (d) it is not buying the lot as a nominee for another person.

G15.4 The buyer is to give to the seller as early as possible before the agreed completion date evidence:

- (a) of the buyer's VAT registration;
- (b) that the buyer has made a VAT option; and
- (c) that the VAT option has been notified in writing to HM Revenue and Customs; and if it does not produce the relevant evidence at least two business days before the agreed completion date, condition G14.1 applies at completion.

G15.5 The buyer confirms that after completion the buyer intends to:

- (a) retain and manage the lot for the buyer's own benefit as a continuing business as a going concern subject to and with the benefit of the tenancies; and
- (b) collect the rents payable under the tenancies and charge VAT on them

G15.6 If, after completion, it is found that the sale of the lot is not a transfer of a going concern then:

- (a) the seller's conveyancer is to notify the buyer's conveyancer of that finding and provide a VAT invoice in respect of the sale of the lot;
- (b) the buyer must within five business days of receipt of the VAT invoice pay to the seller the VAT due; and
- (c) if VAT is payable because the buyer has not complied with this condition G15, the buyer must pay and indemnify the seller against all costs, interest, penalties or surcharges that the seller incurs as a result.

## G16. CAPITAL ALLOWANCES

G16.1 This condition G16 applies where the special conditions state that there are capital allowances available in respect of the lot.

G16.2 The seller is promptly to supply to the buyer all information reasonably required by the buyer in connection with the buyer's claim for capital allowances.

G16.3 The value to be attributed to those items on which capital allowances may be claimed is set out in the special conditions.

G16.4 The seller and buyer agree:

- (a) to make an election on completion under Section 198 of the Capital Allowances Act 2001 to give effect to this condition G16; and
- (b) to submit the value specified in the special conditions to HM Revenue and Customs for the purposes of their respective capital allowance computations.

## G17. MAINTENANCE AGREEMENTS

G17.1 The seller agrees to use reasonable endeavours to transfer to the buyer, at the buyer's cost, the benefit of the maintenance agreements specified in the special conditions.

G17.2 The buyer must assume, and indemnify the seller in respect of, all liability under such contracts from the actual completion date.

# COMMON AUCTION CONDITIONS (EDITION 3)

REPRODUCED WITH THE CONSENT OF THE RICS

## G18. LANDLORD AND TENANT ACT 1987

G18.1 This condition G18 applies where the sale is a relevant disposal for the purposes of part I of the Landlord and Tenant Act 1987.

G18.2 The seller warrants that the seller has complied with sections 5B and 7 of that Act and that the requisite majority of qualifying tenants has not accepted the offer.

## G19. SALE BY PRACTITIONER

G19.1 This condition G19 applies where the sale is by a practitioner either as seller or as agent of the seller.

G19.2 The practitioner has been duly appointed and is empowered to sell the lot.

G19.3 Neither the practitioner nor the firm or any member of the firm to which the practitioner belongs has any personal liability in connection with the sale or the performance of the seller's obligations. The transfer is to include a declaration excluding that personal liability.

G19.4 The lot is sold:

- (a) in its condition at completion;
  - (b) for such title as the seller may have; and
  - (c) with no title guarantee;
- and the buyer has no right to terminate the contract or any other remedy if information provided about the lot is inaccurate, incomplete or missing.

G19.5 Where relevant:

- (a) the documents must include certified copies of those under which the practitioner is appointed, the document of appointment and the practitioner's acceptance of appointment; and
- (b) the seller may require the transfer to be by the lender exercising its power of sale under the Law of Property Act 1925.

G19.6 The buyer understands this condition G19 and agrees that it is fair in the circumstances of a sale by a practitioner.

## G20. TUPE

G20.1 If the special conditions state "There are no employees to which TUPE applies", this is a warranty by the seller to this effect.

G20.2 If the special conditions do not state "There are no employees to which TUPE applies" the following paragraphs apply:

- (a) The seller must notify the buyer of those employees whose contracts of employment will transfer to the buyer on completion (the "Transferring Employees"). This notification must be given to the buyer not less than 14 days before completion.
- (b) The buyer confirms that it will comply with its obligations under TUPE and any special conditions in respect of the Transferring Employees.
- (c) The buyer and the seller acknowledge that pursuant and subject to TUPE, the contracts of employment between the Transferring Employees and the seller will transfer to the buyer on completion.
- (d) The buyer is to keep the seller indemnified against all liability for the Transferring Employees after completion.

## G21. ENVIRONMENTAL

G21.1 This condition G21 only applies where the special conditions so provide.

G21.2 The seller has made available such reports as the seller has as to the environmental condition of the lot and has given the buyer the opportunity to carry out investigations (whether or not the buyer has read those reports or carried out any investigation) and the buyer admits that the price takes into account the environmental condition of the lot.

G21.3 The buyer agrees to indemnify the seller in respect of all liability for or resulting from the environmental condition of the lot.

## G22. SERVICE CHARGE

G22.1 This condition G22 applies where the lot is sold subject to tenancies that include service charge provisions.

G22.2 No apportionment is to be made at completion in respect of service charges.

G22.3 Within two months after completion the seller must provide to the buyer a detailed service charge account for the service charge year current on completion showing:

- (a) service charge expenditure attributable to each tenancy;
- (b) payments on account of service charge received from each tenant;
- (c) any amounts due from a tenant that have not been received;
- (d) any service charge expenditure that is not attributable to any tenancy and is for that reason irrecoverable.

G22.4 In respect of each tenancy, if the service charge account shows that:

- (a) payments on account (whether received or still then due from a tenant) exceed attributable service charge expenditure, the seller must pay to the buyer an amount equal to the excess when it provides the service charge account;
  - (b) attributable service charge expenditure exceeds payments on account (whether those payments have been received or are still then due), the buyer must use all reasonable endeavours to recover the shortfall from the tenant at the next service charge reconciliation date and pay the amount so recovered to the seller within five business days of receipt in cleared funds;
- but in respect of payments on account that are still due from a tenant condition G11 (arrears) applies.

G22.5 In respect of service charge expenditure that is not attributable to any tenancy the seller must pay the expenditure incurred in respect of the period before actual completion date and the buyer must pay the expenditure incurred in respect of the period after actual completion date. Any necessary monetary adjustment is to be made within five business days of the seller providing the service charge account to the buyer.

G22.6 If the seller holds any reserve or sinking fund on account of future service charge expenditure or a depreciation fund:

- (a) the seller must pay it (including any interest earned on it) to the buyer on completion; and
- (b) the buyer must covenant with the seller to hold it in accordance with the terms of the tenancies and to indemnify the seller if it does not do so.

## G23. RENT REVIEWS

G23.1 This condition G23 applies where the lot is sold subject to a tenancy under which a rent review due on or before the actual completion date has not been agreed or determined.

G23.2 The seller may continue negotiations or rent review proceedings up to the actual completion date but may not agree the level of the revised rent or commence rent review proceedings without the written consent of the buyer, such consent not to be unreasonably withheld or delayed.

G23.3 Following completion the buyer must complete rent review negotiations or proceedings as soon as reasonably practicable but may not agree the level of the revised rent without the written consent of the seller, such consent not to be unreasonably withheld or delayed.

G23.4 The seller must promptly:

- (a) give to the buyer full details of all rent review negotiations and proceedings, including copies of all correspondence and other papers; and
- (b) use all reasonable endeavours to substitute the buyer for the seller in any rent review proceedings.

G23.5 The seller and the buyer are to keep each other informed of the progress of the rent review and have regard to any proposals the other makes in relation to it.

G23.6 When the rent review has been agreed or determined the buyer must account to the seller for any increased rent and interest recovered from the tenant that relates to the seller's period of ownership within five business days of receipt of cleared funds.

G23.7 If a rent review is agreed or determined before completion but the increased rent and any interest recoverable from the tenant has not been received by completion the increased rent and any interest recoverable is to be treated as arrears.

G23.8 The seller and the buyer are to bear their own costs in relation to rent review negotiations and proceedings.

## G24. TENANCY RENEWALS

G24.1 This condition G24 applies where the tenant under a tenancy has the right to remain in occupation under part II of the Landlord and Tenant Act 1954 (as amended) and references to notices and proceedings are to notices and proceedings under that Act.

G24.2 Where practicable, without exposing the seller to liability or penalty, the seller must not without the written consent of the buyer (which the buyer must not unreasonably withhold or delay) serve or respond to any notice or begin or continue any proceedings.

G24.3 If the seller receives a notice the seller must send a copy to the buyer within five business days and act as the buyer reasonably directs in relation to it.

G24.4 Following completion the buyer must:

- (a) with the co-operation of the seller take immediate steps to substitute itself as a party to any proceedings;
- (b) use all reasonable endeavours to conclude any proceedings or negotiations for the renewal of the tenancy and the determination of any interim rent as soon as reasonably practicable at the best rent or rents reasonably obtainable; and
- (c) if any increased rent is recovered from the tenant (whether as interim rent or under the renewed tenancy) account to the seller for the part of that increase that relates to the seller's period of ownership of the lot within five business days of receipt of cleared funds.

G24.5 The seller and the buyer are to bear their own costs in relation to the renewal of the tenancy and any proceedings relating to this.

## G25. WARRANTIES

G25.1 Available warranties are listed in the special conditions.

G25.2 Where a warranty is assignable the seller must:

- (a) on completion assign it to the buyer and give notice of assignment to the person who gave the warranty; and
- (b) apply for (and the seller and the buyer must use all reasonable endeavours to obtain) any consent to assign that is required. If consent has not been obtained by completion the warranty must be assigned within five business days after the consent has been obtained.

G25.3 If a warranty is not assignable the seller must after completion:

- (a) hold the warranty on trust for the buyer; and
- (b) at the buyer's cost comply with such of the lawful instructions of the buyer in relation to the warranty as do not place the seller in breach of its terms or expose the seller to any liability or penalty.

## G26. NO ASSIGNMENT

The buyer must not assign, mortgage or otherwise transfer or part with the whole or any part of the buyer's interest under this contract.

## G27. REGISTRATION AT THE LAND REGISTRY

G27.1 This condition G27.1 applies where the lot is leasehold and its sale either triggers first registration or is a registrable disposition. The buyer must at its own expense and as soon as practicable:

- (a) procure that it becomes registered at Land Registry as proprietor of the lot;
- (b) procure that all rights granted and reserved by the lease under which the lot is held are properly noted against the affected titles; and
- (c) provide the seller with an official copy of the register relating to such lease showing itself registered as proprietor.

G27.2 This condition G27.2 applies where the lot comprises part of a registered title. The buyer must at its own expense and as soon as practicable:

- (a) apply for registration of the transfer;
- (b) provide the seller with an official copy and title plan for the buyer's new title; and
- (c) join in any representations the seller may properly make to Land Registry relating to the application.

## G28. NOTICES AND OTHER COMMUNICATIONS

G28.1 All communications, including notices, must be in writing. Communication to or by the seller or the buyer may be given to or by their conveyancers.

G28.2 A communication may be relied on if:

- (a) delivered by hand; or
- (b) made electronically and personally acknowledged (automatic acknowledgement does not count); or
- (c) there is proof that it was sent to the address of the person to whom it is to be given (as specified in the sale memorandum) by a postal service that offers normally to deliver mail the next following business day.

G28.3 A communication is to be treated as received:

- (a) when delivered, if delivered by hand; or
- (b) when personally acknowledged, if made electronically; but if delivered or made after 1700 hours on a business day a communication is to be treated as received on the next business day.

G28.4 A communication sent by a postal service that offers normally to deliver mail the next following business day will be treated as received on the second business day after it has been posted.

## G29. CONTRACTS (RIGHTS OF THIRD PARTIES) ACT 1999

No one is intended to have any benefit under the contract pursuant to the Contract (Rights of Third Parties) Act 1999.

# Going once...

## The most suitable properties for auction include:

- 🔑 Properties for improvement
- 🔑 Tenanted properties
- 🔑 Residential investments
- 🔑 Development propositions
- 🔑 Building Land
- 🔑 Mixed use properties
- 🔑 Commercial investments
- 🔑 Unique properties
- 🔑 Land (development or greenfield)
- 🔑 Lock up garages

# Auction dates:

**4th December 2019**

**[auctionhouse.co.uk/copelands](https://auctionhouse.co.uk/copelands)  
[auctionhouse.co.uk/southyorkshire](https://auctionhouse.co.uk/southyorkshire)**

Bridge House, Hady Hill  
Chesterfield S41 0DT  
☎ 0124 623 2698 (Chesterfield)  
✉ [chesterfield@auctionhouse.co.uk](mailto:chesterfield@auctionhouse.co.uk)  
☎ 0114 223 0777 (Sheffield)  
✉ [sheffield@auctionhouse.co.uk](mailto:sheffield@auctionhouse.co.uk)



**PROPERTY AUCTION EXPERTS  
LOCALLY REGIONALLY NATIONALLY**