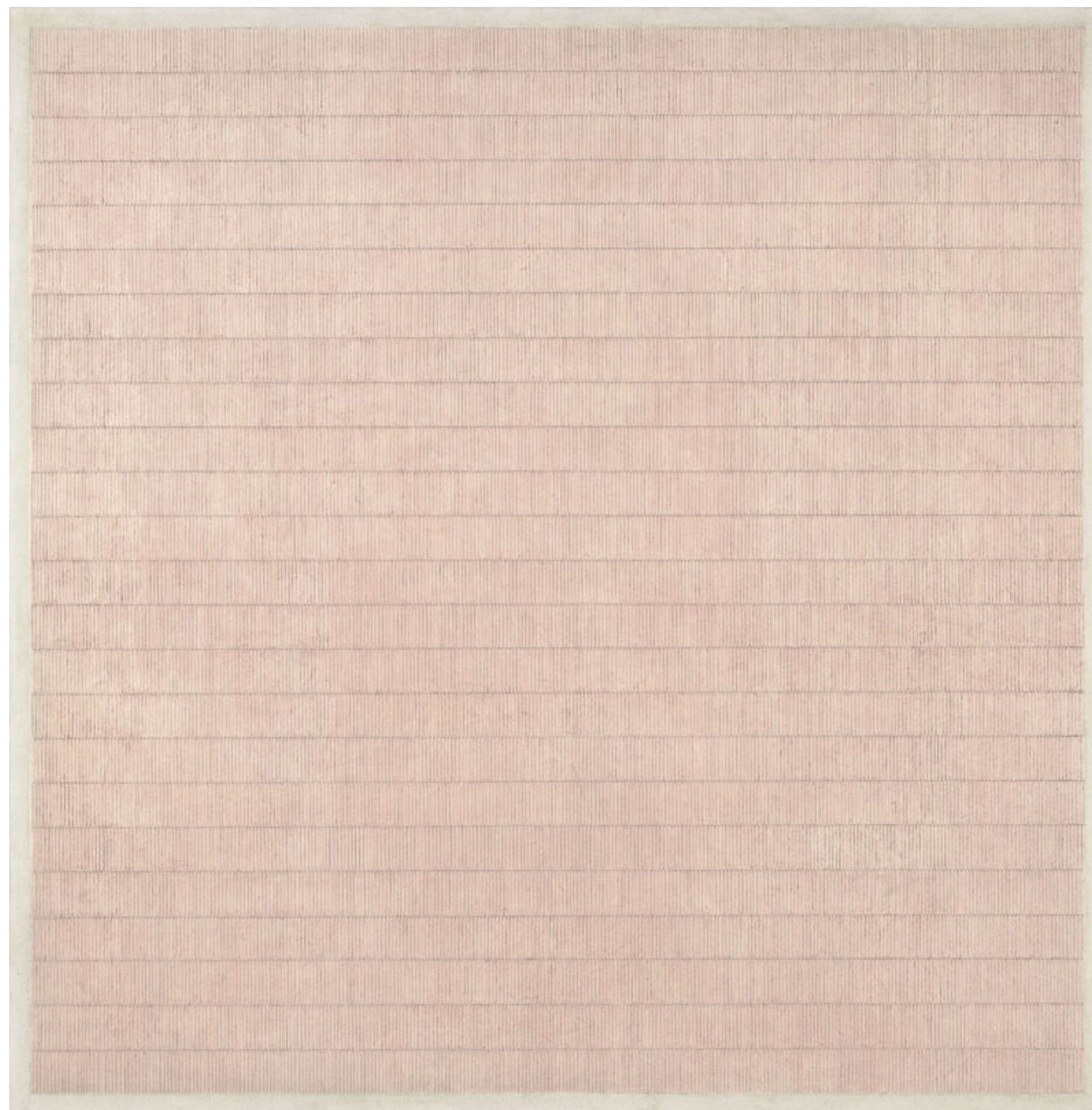


FLOWER IN THE WIND
BY AGNES MARTIN



CONCEPT STATEMENT

The painting that I chose is Flower in the Wind by Agnes Martin. The reason why I am drawn to this artwork is because of its ethereal and spiritual qualities. It has subtle, sun-faded, warm, earthy colors and blurriness that create a calming and serene effect to the viewers. If I look closer to the painting, it also has many slim and organized vertical lines that repeat throughout the whole piece.

I am inspired to create a facade that can create this spiritual and calming experience to the user from both the exterior and interior of the building, by using a repetitive, warm-toned vertical screen. Perhaps the material would be wood. Manipulating the bright and strong sunlight of California, lowering its intensity and creating beautiful shadow effects in the interior. Also creating a blurry glow from the exterior at night.

LOCATION

Southern California

CONTEXT

6 Story Mid-rise infill building facing South West

CLIENT

Art Gallery

SYSTEM DESCRIPTION

WT-1 : Wood Screen, Stainless Steel Frame, Aluminum, Wood, Glass, Unitized Curtain Wall System:

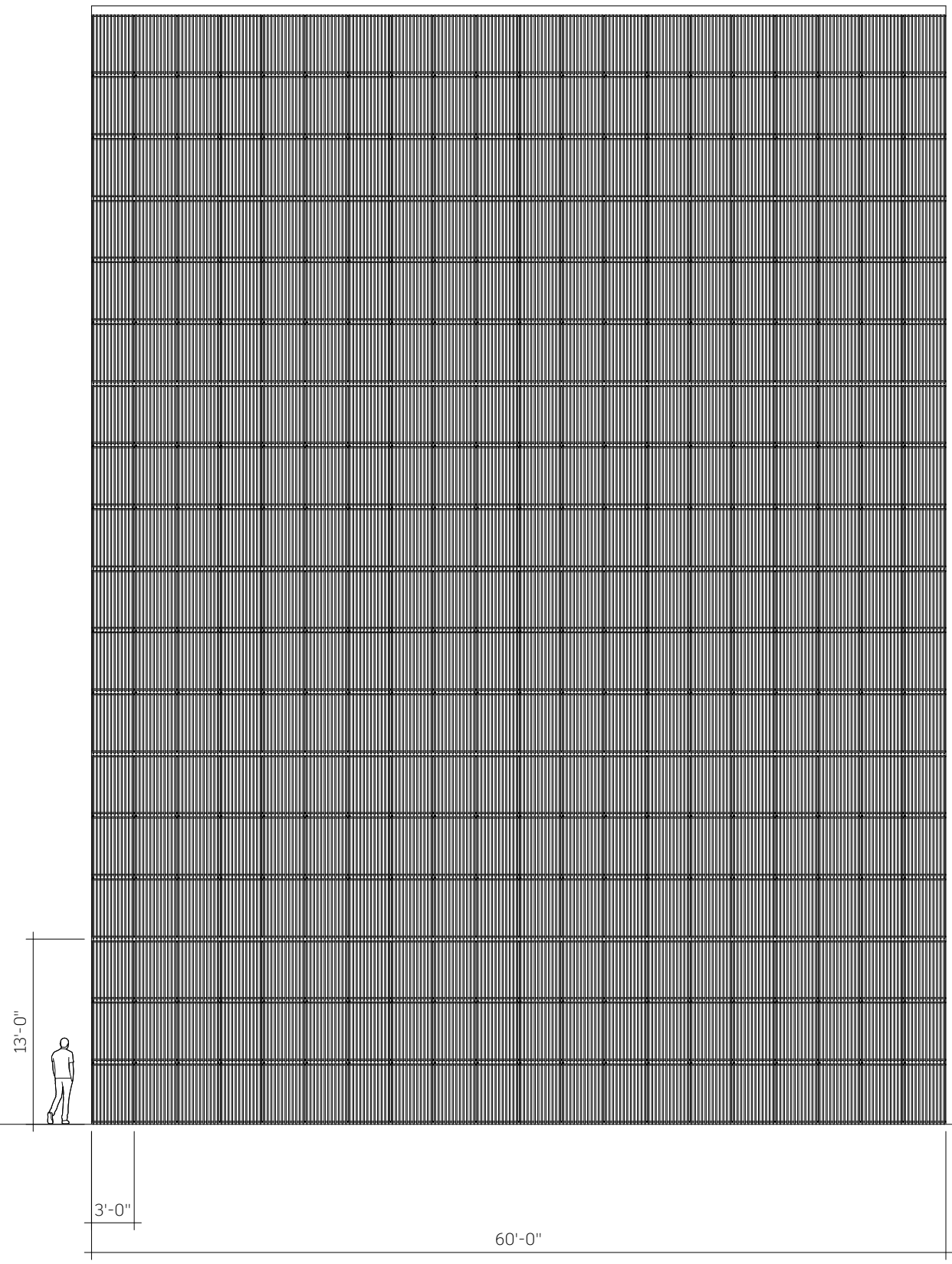
System consists of vertical wood batons attached to operable stainless steel frames, connected to the steel reinforcement within the vertical aluminum mullions of the curtain wall units. Insulating glass is four-sided structural silicone glazed onto unitized aluminum and wood frames of thermally broken, custom profile extruded aluminum attached to wood mullions. Surface two of the glass has a silver appearance low-E coating, with low reflectivity and have color neutrality. Spandrel areas are on the interior of the glazing, clad with wood panels. System is anchored to the building structure at the top of the concrete slab.

LIST OF FACADE FEATURES

System includes hinges on the stainless steel frames that are operable for glass maintenance access.

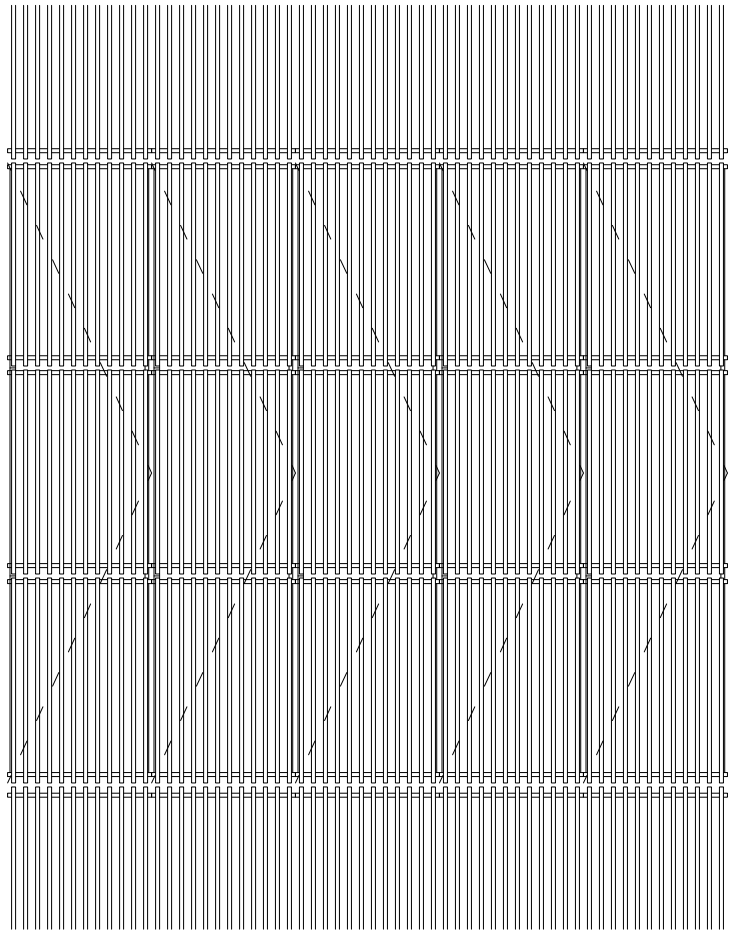
PRINCIPAL MATERIAL FINISHES

All wood on the exterior will be custom treated to prevent degradation from moisture and weather. Aluminum will have anodized coating. Stainless steel will be 304 type with 2B cold rolled finish. All wood visible from the interior shall be coated with clear varnish.

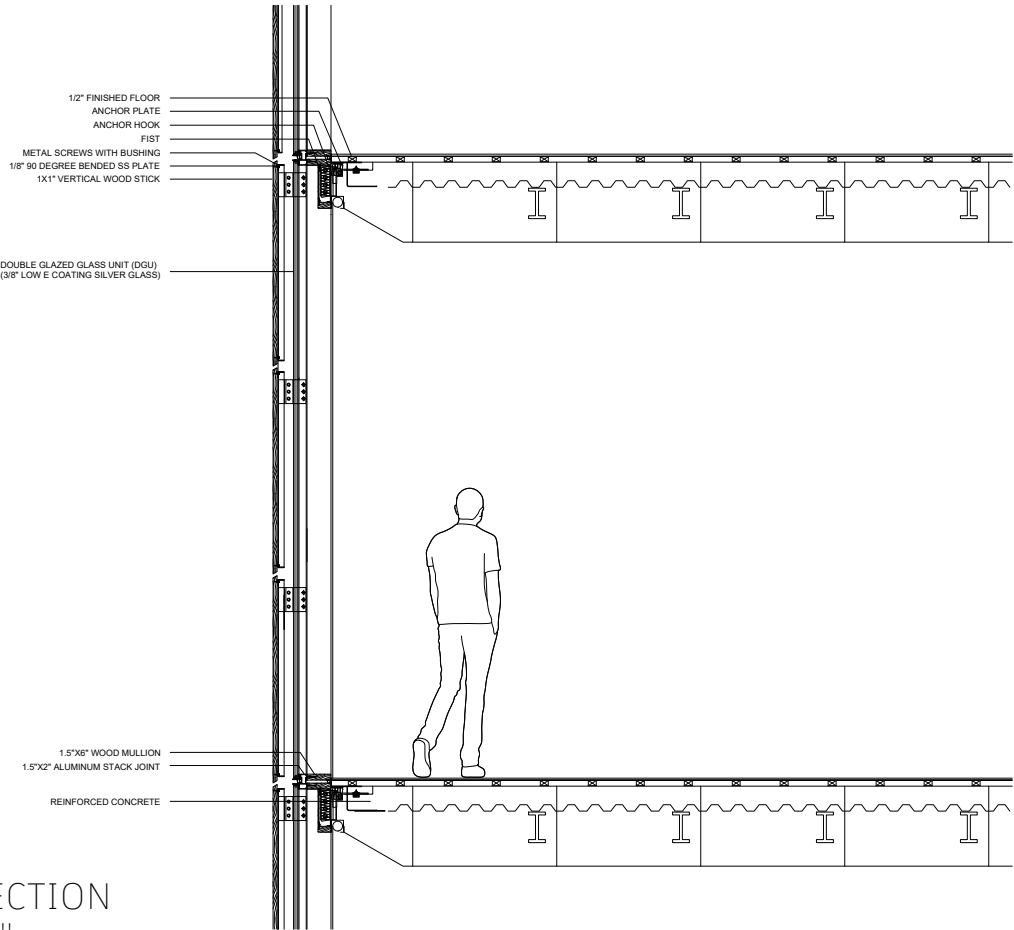


ELEVATION

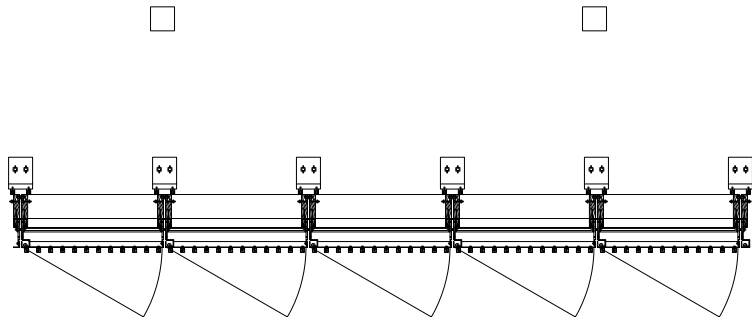
ROADMAP ELEVATION
SCALE 1'=0.5"

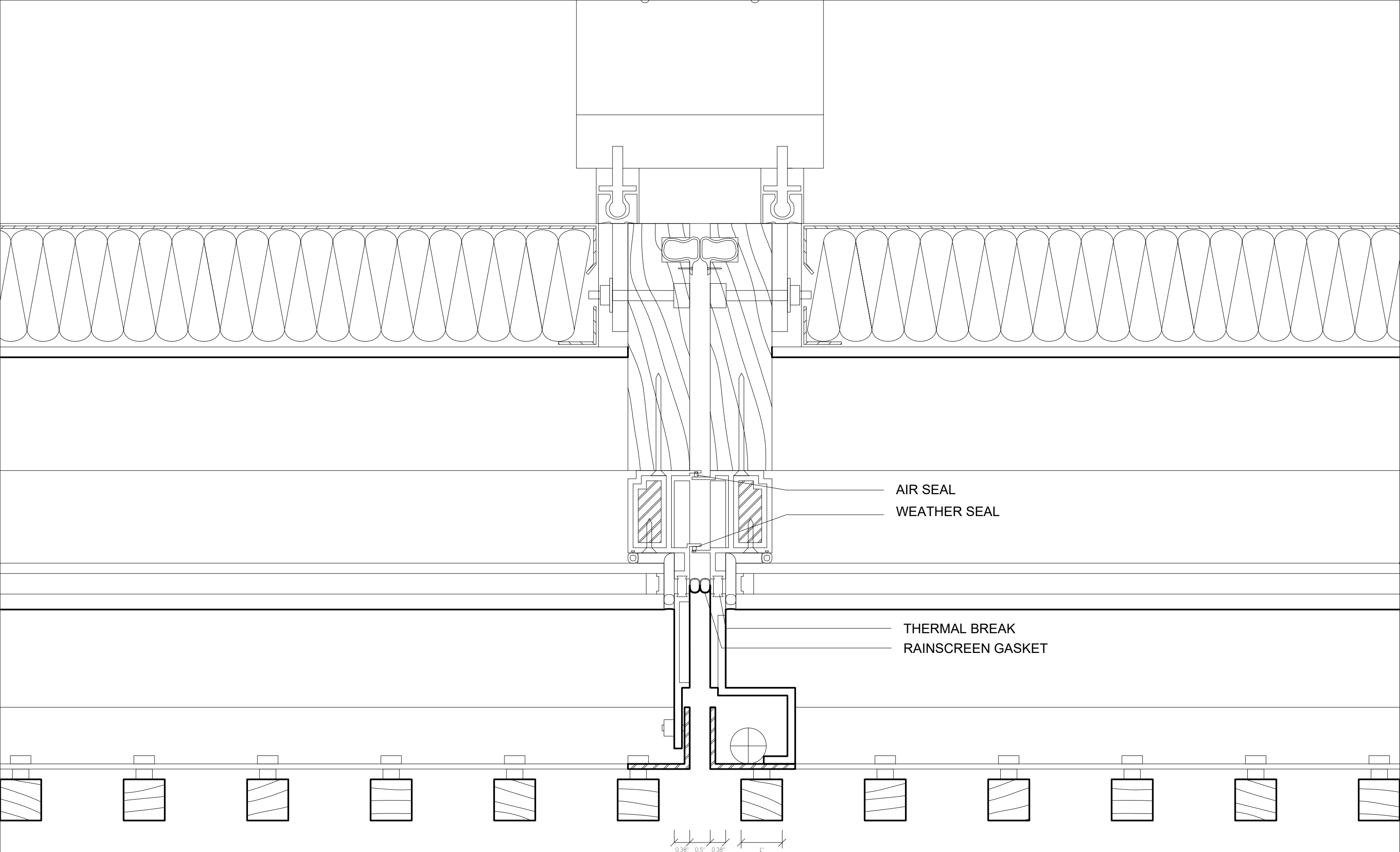


ROADMAP SECTION
SCALE 1'=0.5"



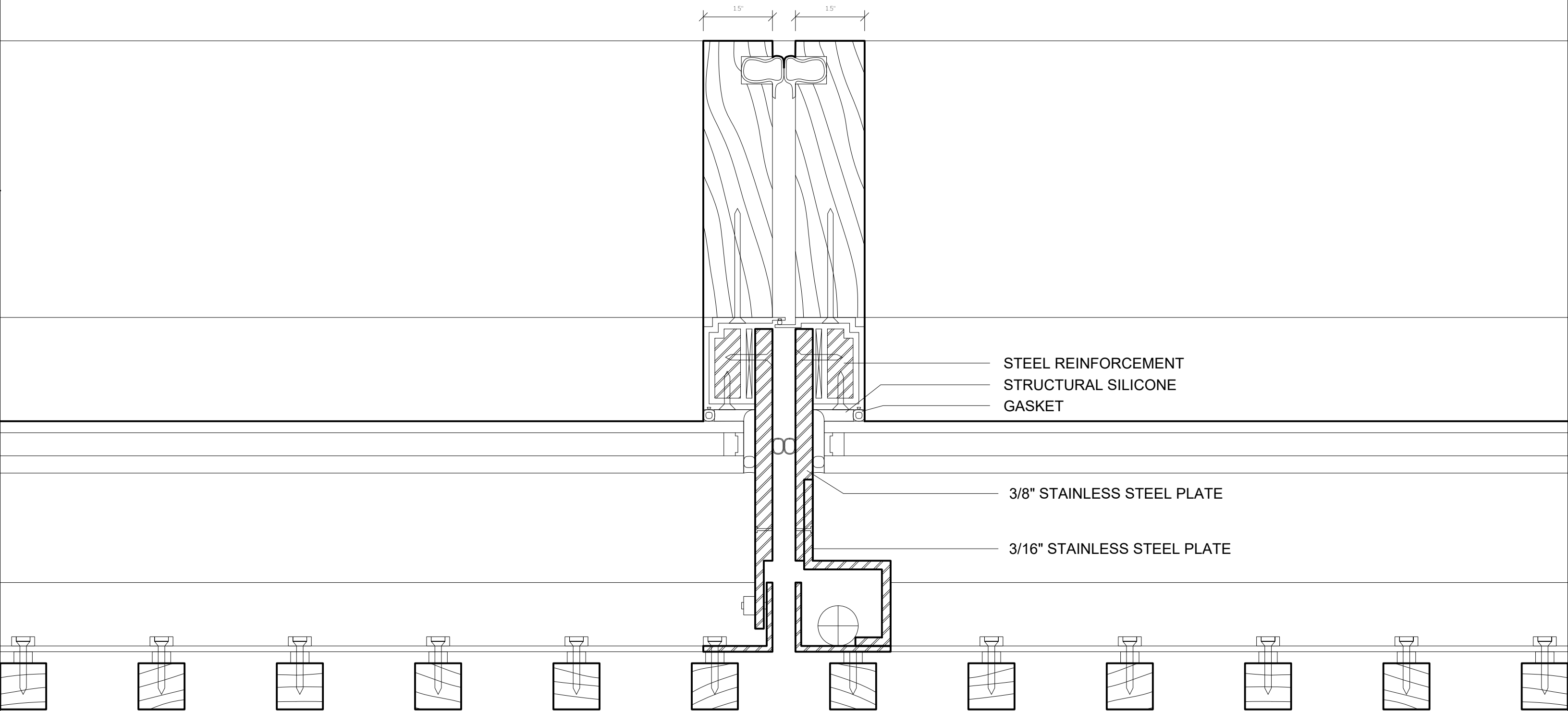
ROADMAP PLAN
SCALE 1'=0.5"



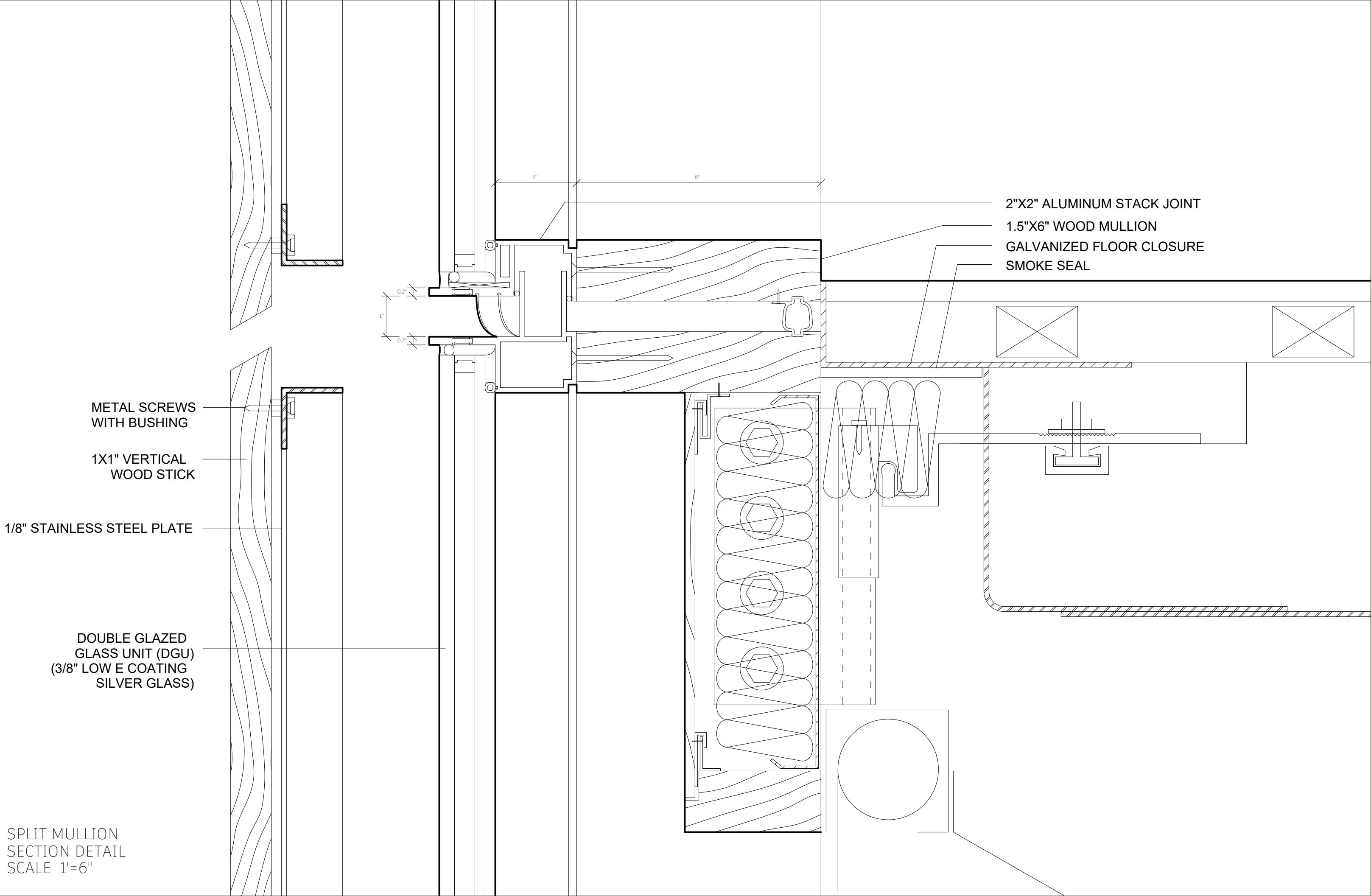


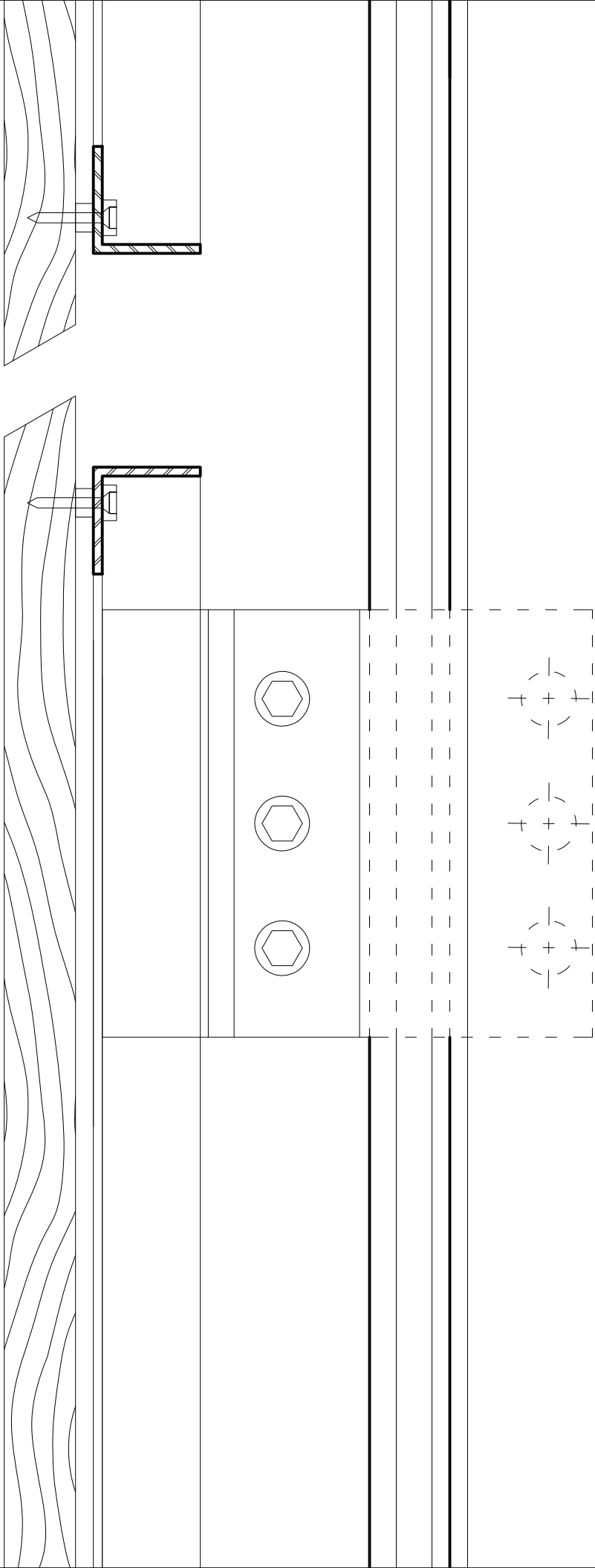
SPLIT MULLION DETAIL
SCALE 1'=6"

0.38" 0.5" 0.38" 1"



WOOD SCREEN HINGE DETAIL
SCALE 1'=6"





HINGE SECTION
SCALE 1'=6"

