

# Chapter 14 – Installing Prerequisites

---

## Terms

This Windows SharePoint Services Operations Guide (WSSOPS) from the Computer Information Agency is provided as is. Every effort has been made by the author to ensure that information provided is correct however this cannot be guaranteed.

By using the Guide you also acknowledge that any work performed on production systems is a potentially dangerous act and may involve significant business risk and downtime. You hereby agree to release, waive and discharge the Computer information Agency and/or the author from any liability incurred to yourself, your business or customers for any and all loss or damage, and any claims or demands therefore on account of problems arising from the use of this Guide.

By using this guide you hereby assume full responsibility for any risk to computer systems, now and forever arising out of, or related to the use of this Guide on any computer system.

## Distribution and Duplication Guidelines

This document is copyright and only available directly from the Computer Information Agency. This work is now licensed under Creative Commons.



<http://creativecommons.org/licenses/by-nc-sa/4.0/>

By using this Guide you agree to these terms.

### Index

- 14.1 Scope**
- 14.2 Creating a self signed SSL Certificate**
- 14.3 Dot Net 3**
- 14.4 Microsoft SQL Server Management Studio Express**
- 14.5 Determining whether the SharePoint instance has been upgraded**
- 14.6 Disabling Full-Text Searching in WSS v2**
- 14.7 Configuring Windows 2008 for WSS v3**
- 14.8 Conclusion**

## Chapter 14 – Installing Prerequisites

### 14.1 Scope

There are number of things that having preinstalled prior to installing or migrating Windows SharePoint Services v3 (WSS v3) is necessary or recommended. This chapter will cover the installation and configuration of these options.

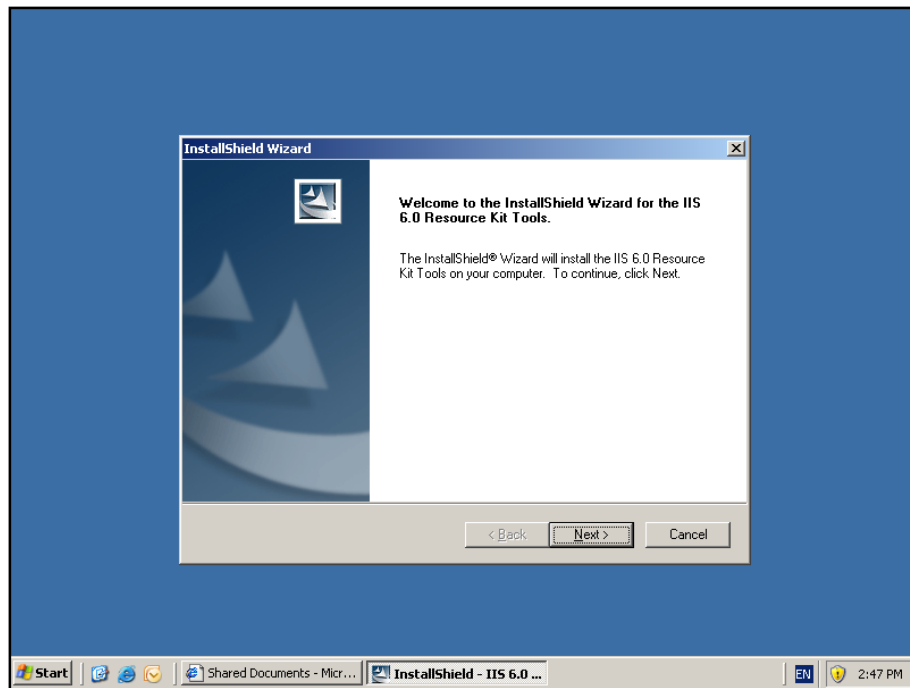
### 14.2 Creating a self signed SSL Certificate

If you wish to have encrypted WSS v3 traffic then you will need to install and configure an SSL certificate on the WSS v3 server. It is possible to purchase a commercial server certificate but it also possible to generate a free one using a tool from Microsoft. If you are installing WSS v3 onto Windows Small Business Server 2003 (SBS) and you have already run the Connect to Internet wizard, a certificate has already been created.

If you don't already have a certificate, then download the Microsoft IIS 6.0 Resource kit from:

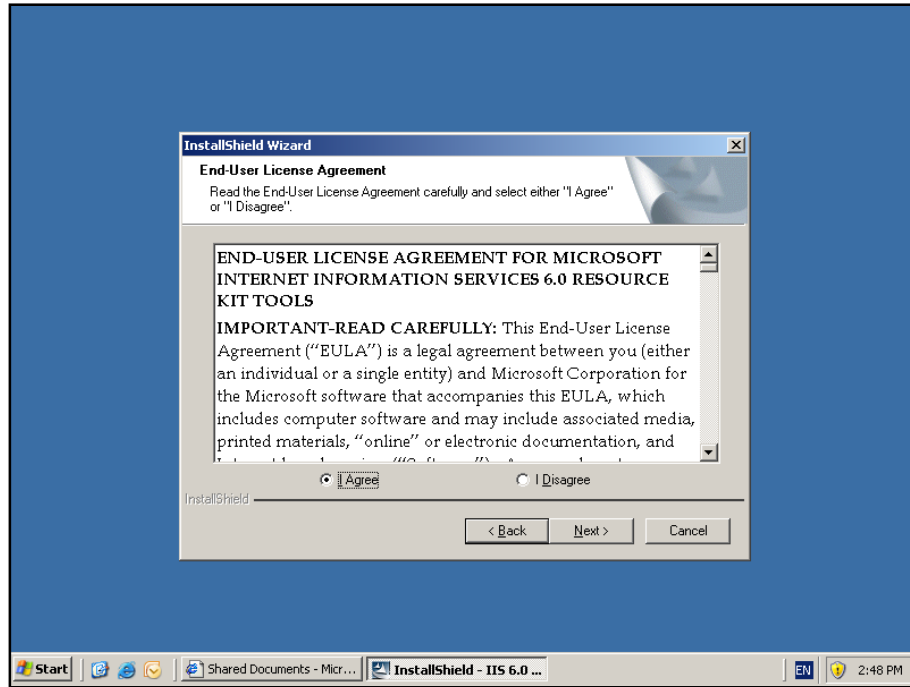
<http://www.microsoft.com/downloads/details.aspx?FamilyID=56fc92ee-a71a-4c73-b628-ade629c89499&DisplayLang=en>

Log onto the WSS v3 server as an administrator.

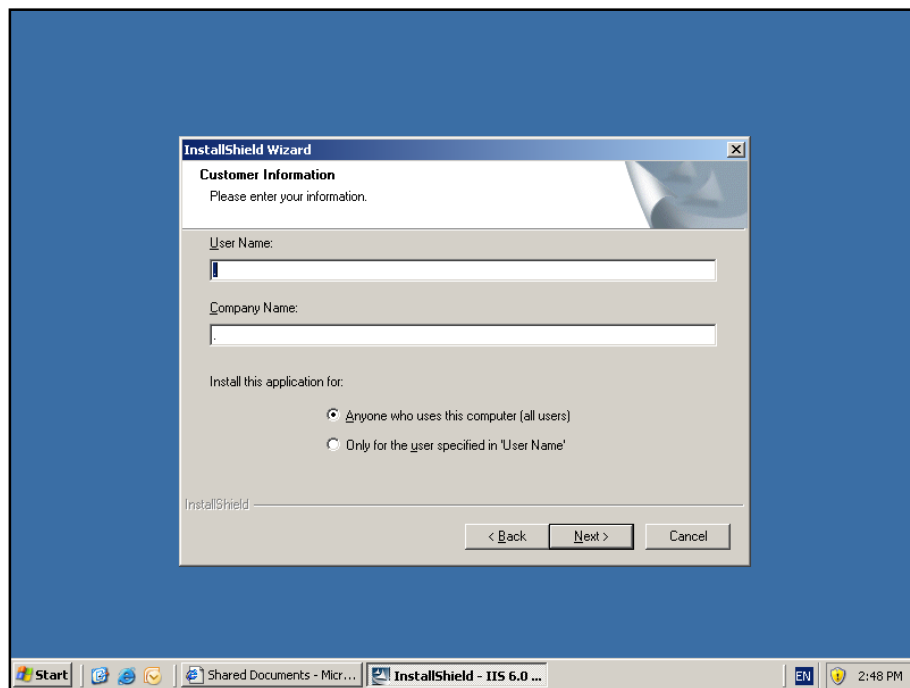


Launch the file to commence the installation of the IIS 6 Resource Kit Tools. Press **Next** to continue.

## Chapter 14 – Installing Prerequisites

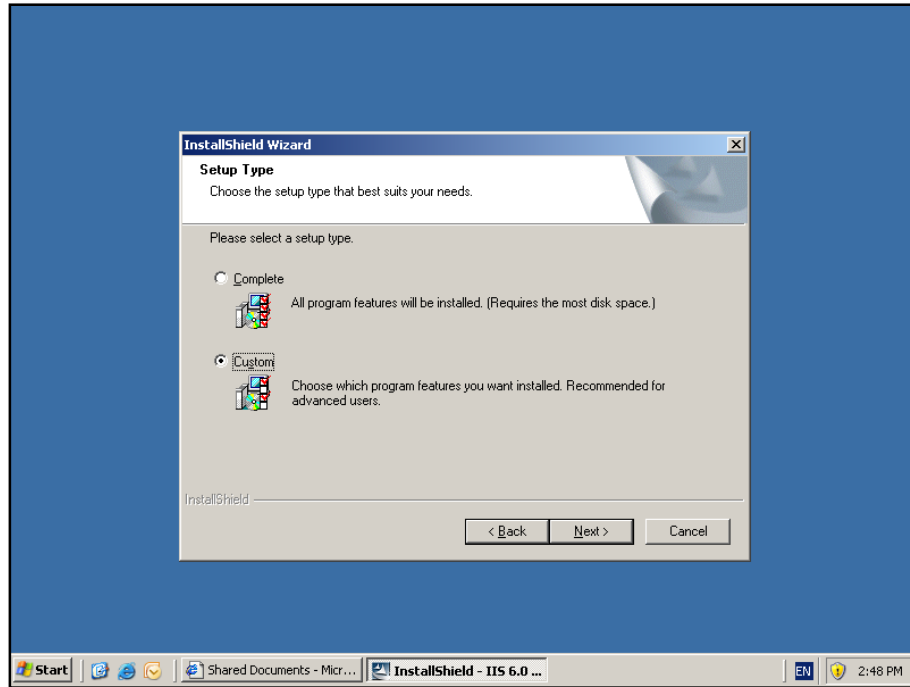


Click **I Agree** to accept the *End-User License Agreement* and press **Next** to continue.

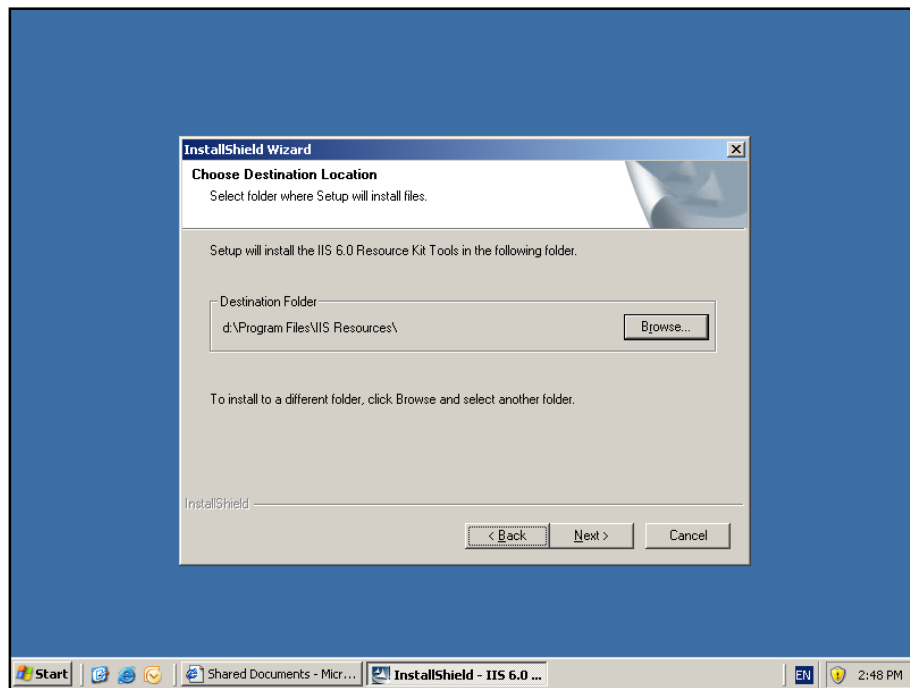


Enter company details and installation option and press **Next** to continue.

## Chapter 14 – Installing Prerequisites

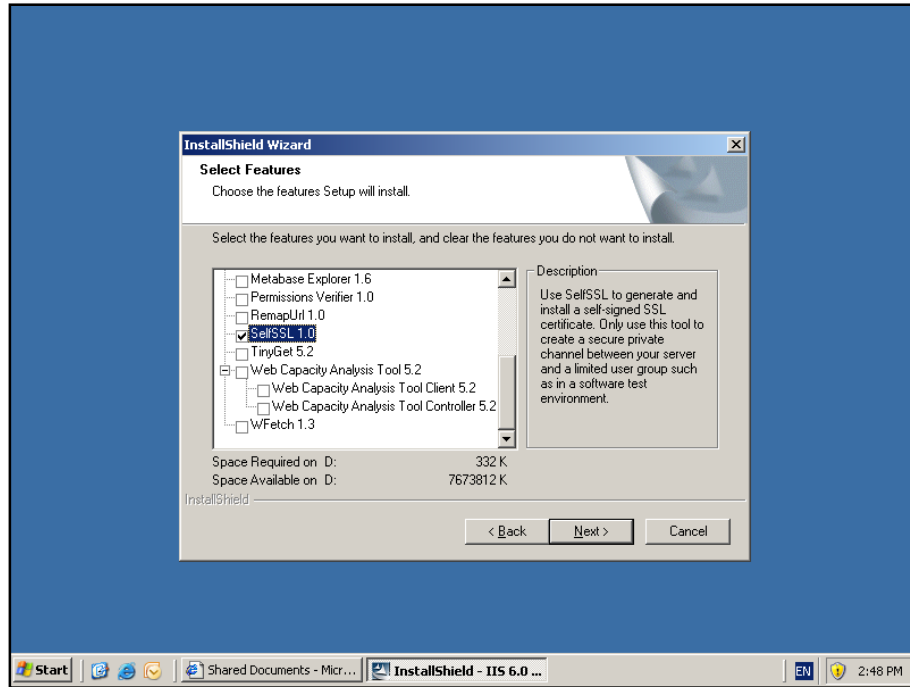


Choose the *Custom* installation option because we only need to install the program to create the SSL certificate. Press **Next** to continue.

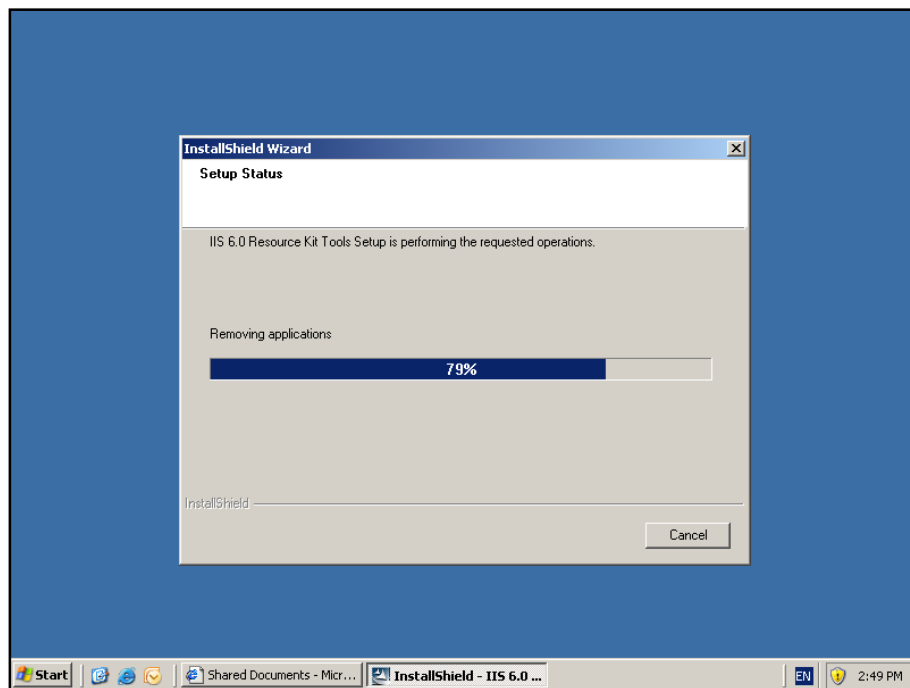


Select the location into which you wish to install the software. Press **Next** to continue.

## Chapter 14 – Installing Prerequisites

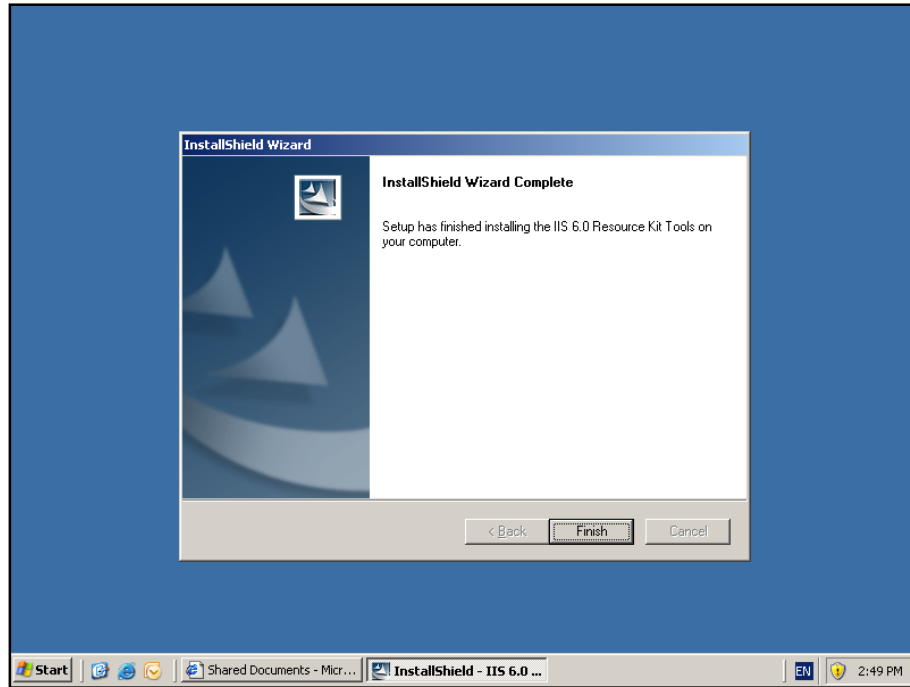


Remove the ticks from all the features except for *SetSSL 1.0*. Press **Next** to continue.

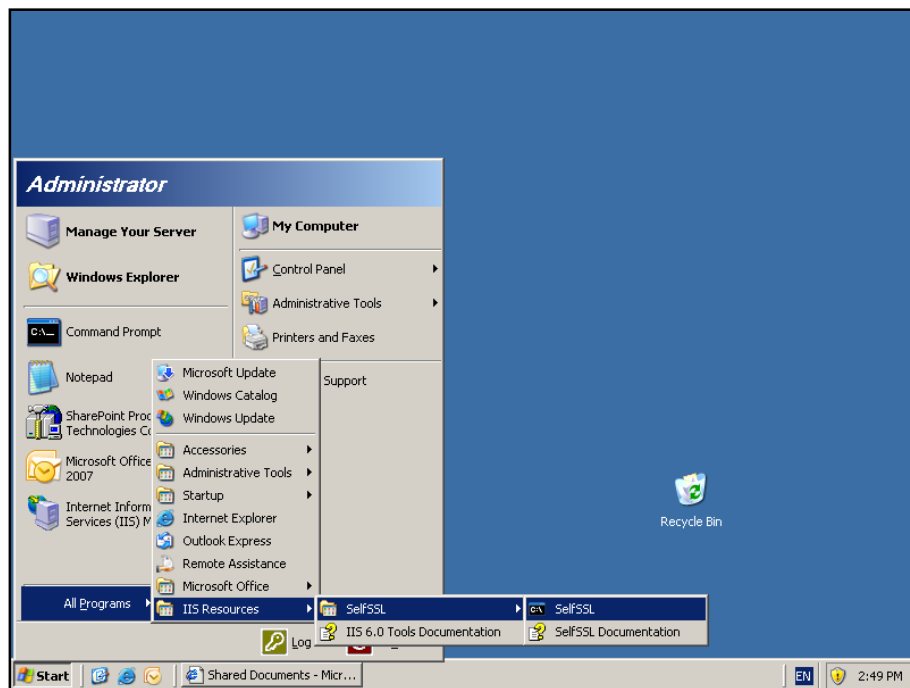


The installation will now copy the required files to your machine.

## Chapter 14 – Installing Prerequisites

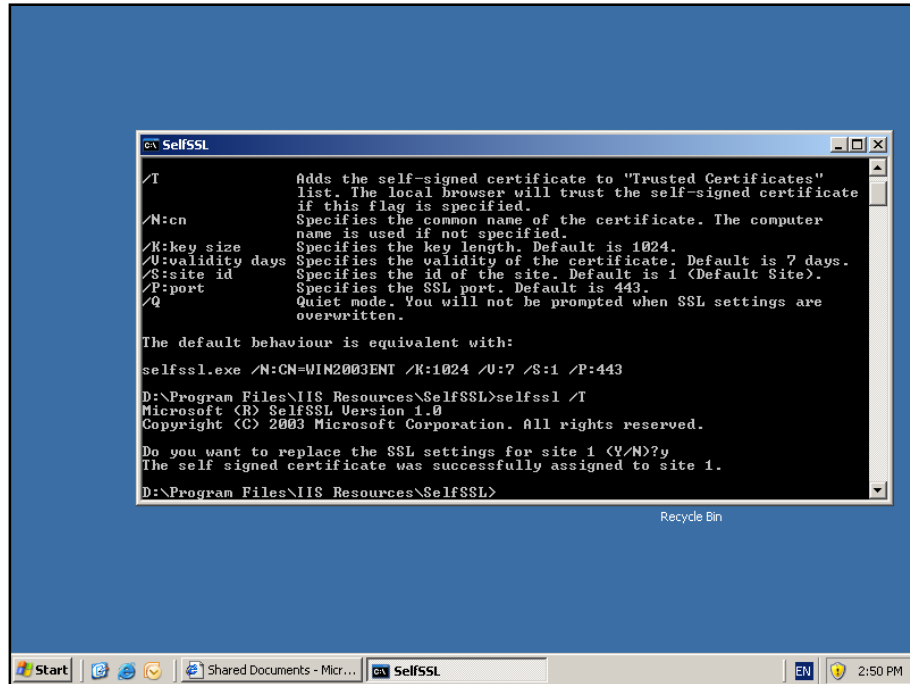


When the installation is complete press the **Finish** button.

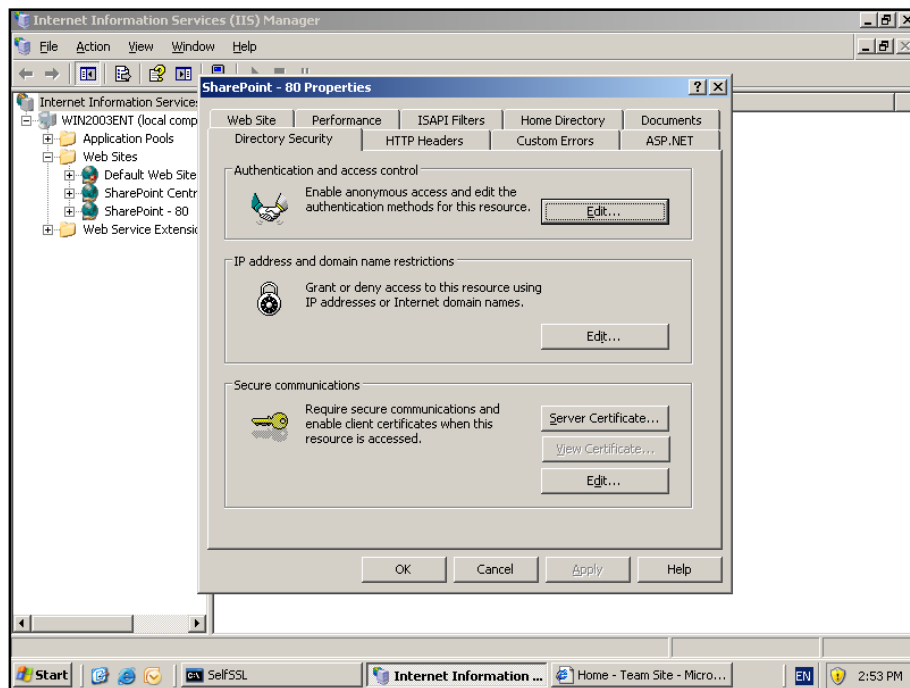


Run *SelfSSL* from **Start | All Programs | IIS Resources | SelfSSL**.

## Chapter 14 – Installing Prerequisites



You will be asked whether you wish to replace the SSL Settings for site 1. Enter **y**.

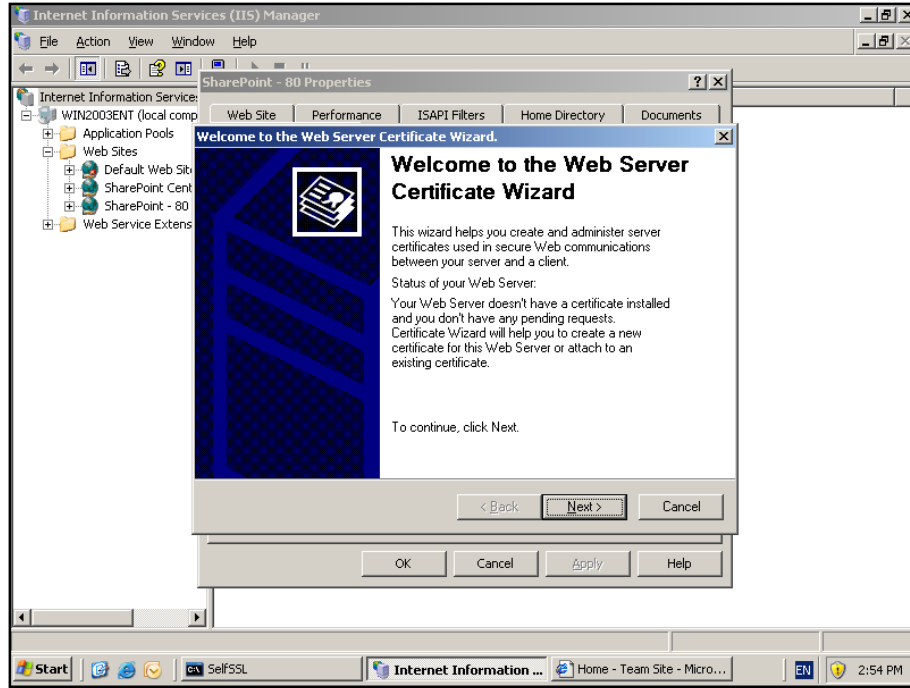


Close the command window and run the *Internet Information Services (IIS) Manager* via **Start | Administrative Tools | Internet Information Services Manager**.

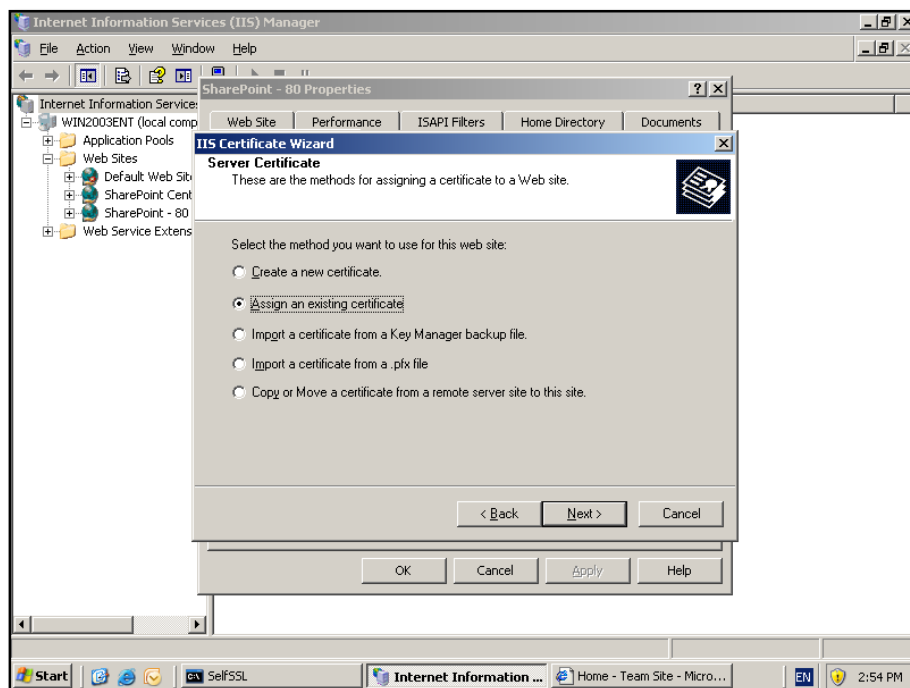


## Chapter 14 – Installing Prerequisites

In IIS Manager locate the WSS v3 site you wish to attach the certificate to. All the web sites are located under the *Web Sites* folder. **Right mouse** click on the site and select properties from the menu that appears. Next locate the *Directory Security* tab and press the *Server certificate* button at the bottom of the window.

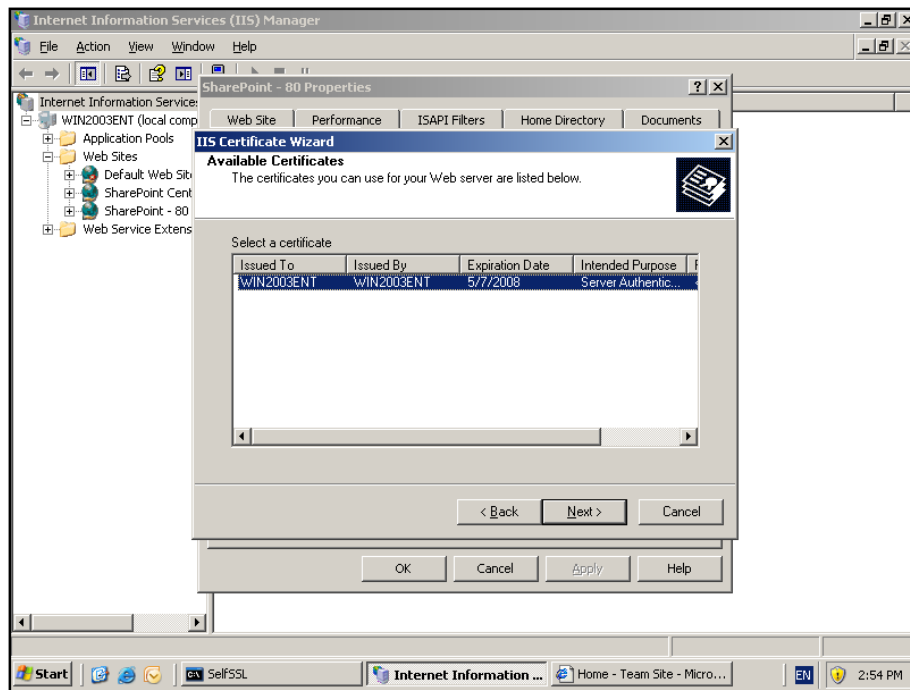


The wizard will now launch. Press the **Next** button to continue.

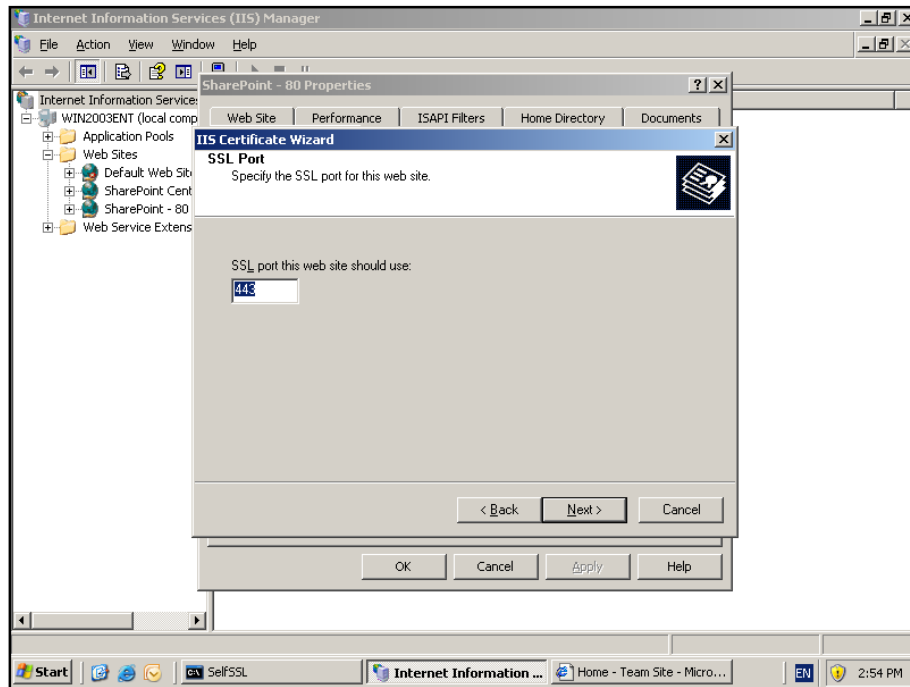


## Chapter 14 – Installing Prerequisites

Select the option to *Assign an existing certificate* and press **Next** to continue.



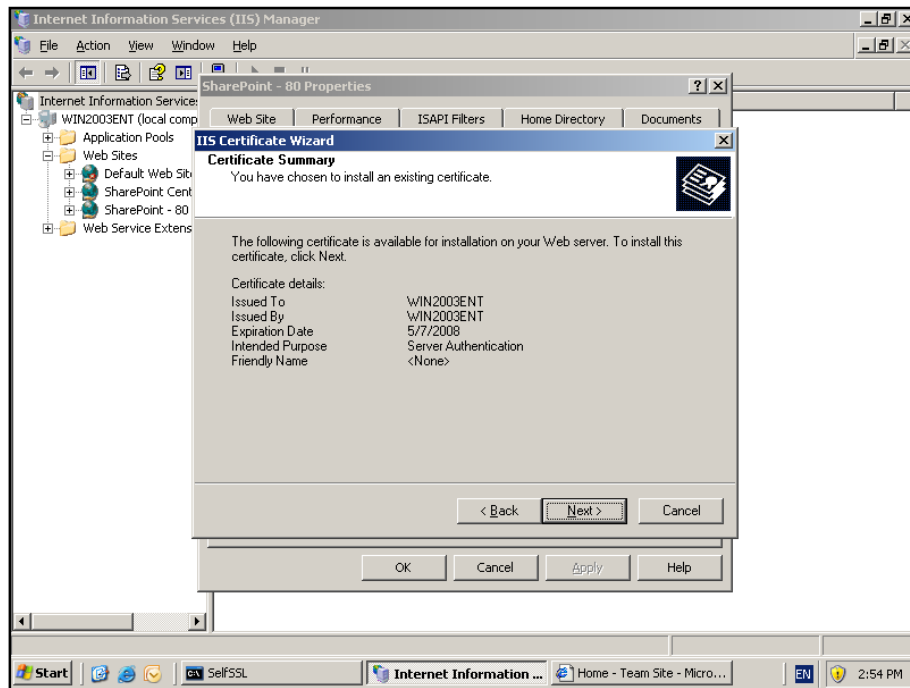
You should now see the certificate you created earlier. Ensure that it is selected and press the **Next** button.



## Chapter 14 – Installing Prerequisites

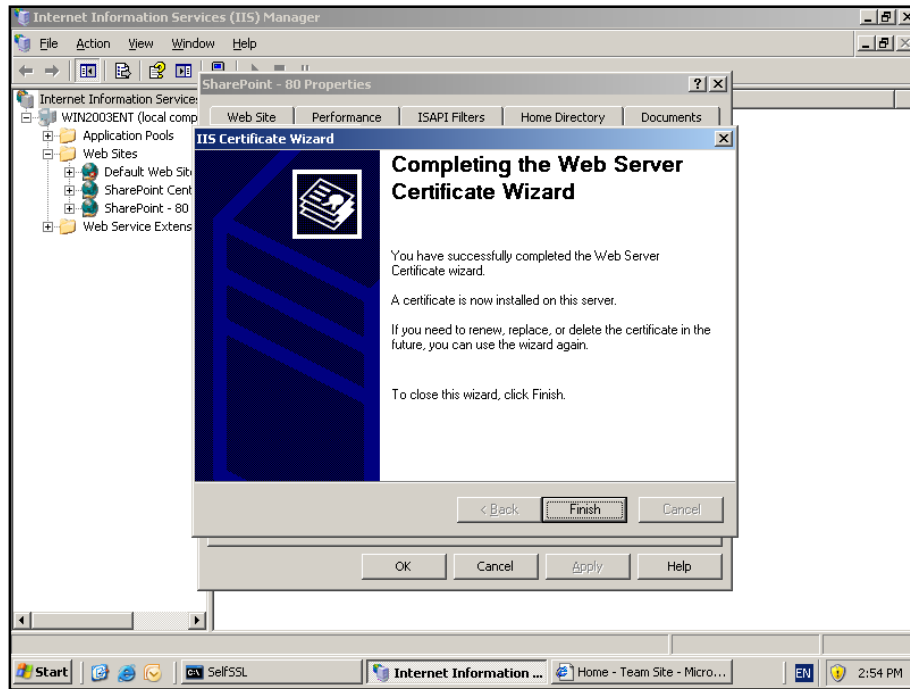
Now enter the port over which you want SSL communications to take place. Normal SSL communications take place over port 443 however you are able to select any port that you have configured your WSS v3 site for. In the case of Windows Small Business Server 2003 (SBS), this will have to be a port other than 443 since SBS already uses SSL for secure communications.

Press the **Next** button to continue.

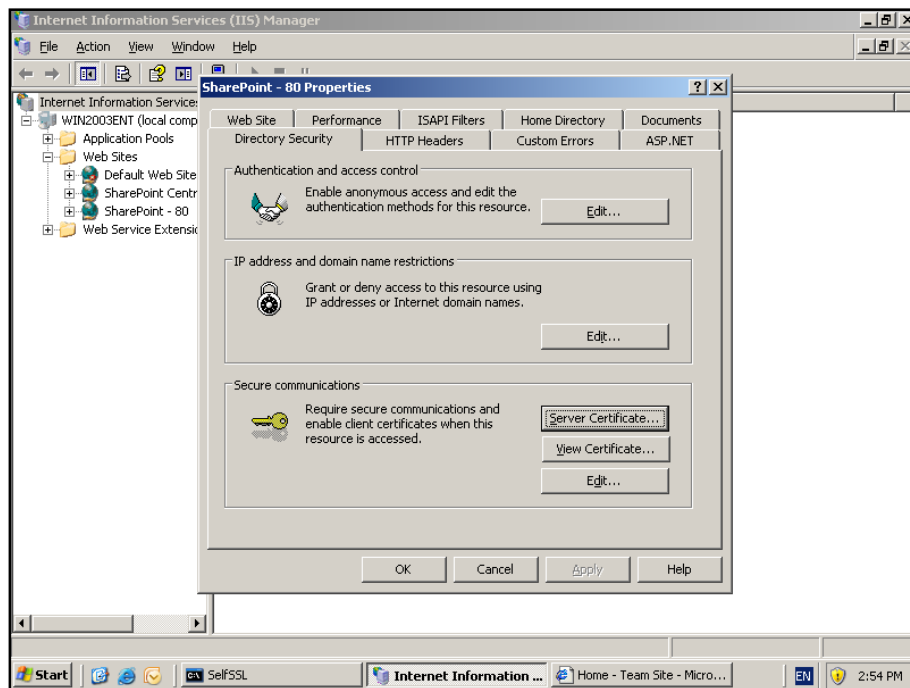


You should now see a summary for the steps you have just completed. Press **Next** to continue.

## Chapter 14 – Installing Prerequisites

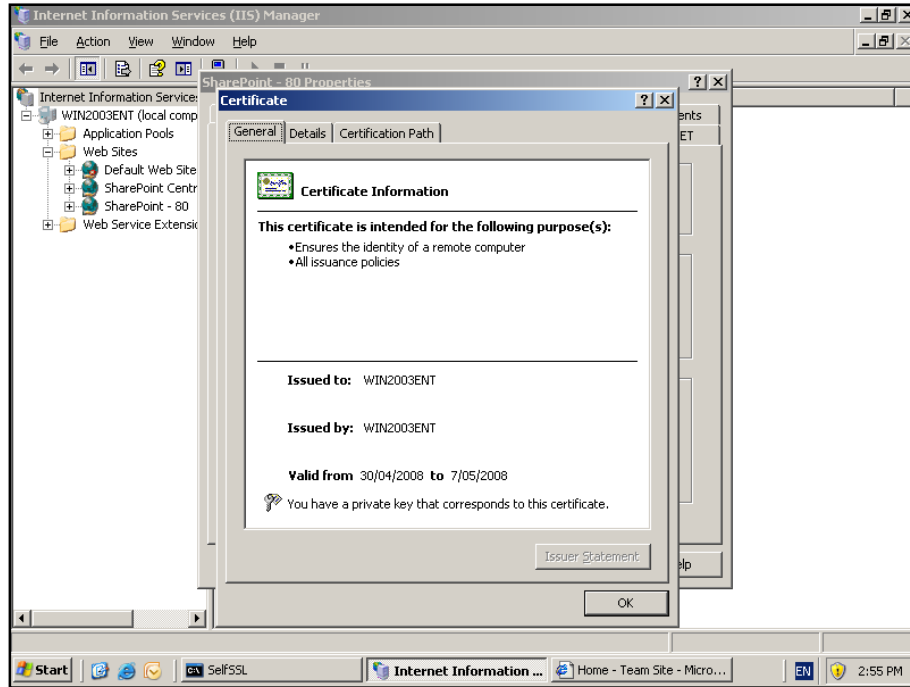


Press **Finish** to complete the wizard.



In the IIS manager you will now see that the *View Certificate* button is available. Click on this to examine the certificate.

## Chapter 14 – Installing Prerequisites



You should now see the details of the certificate. Note that the certificate is issued by the server (in this case WIN2003ENT).

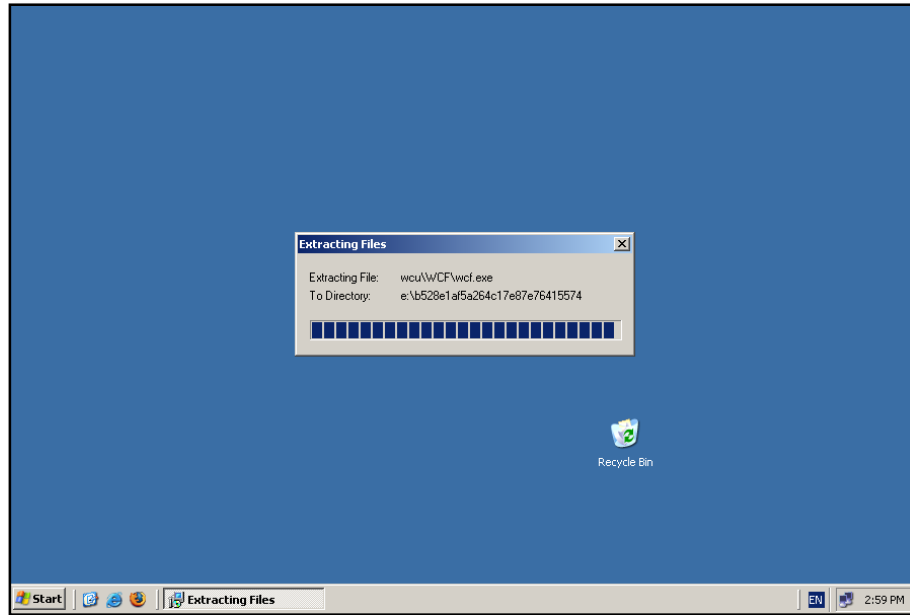
When connecting to this site via SSL in a browser you will normally be warned about a certificate error (because it is self signed) but you can be confident that the information sent between your browser and the server is encrypted.

### 14.3 Dot Net 3

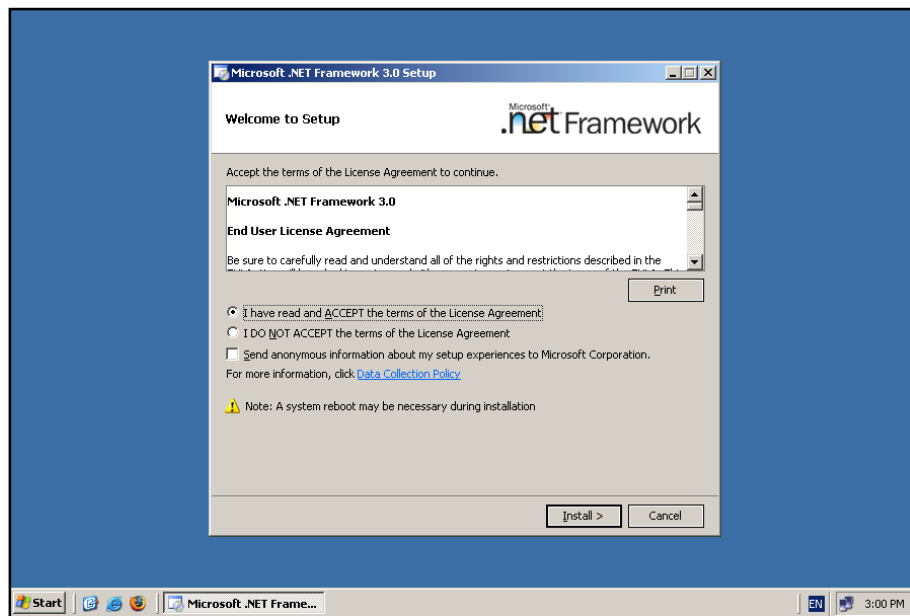
Download full package from:

<http://go.microsoft.com/fwlink/?LinkId=70848>

## Chapter 14 – Installing Prerequisites

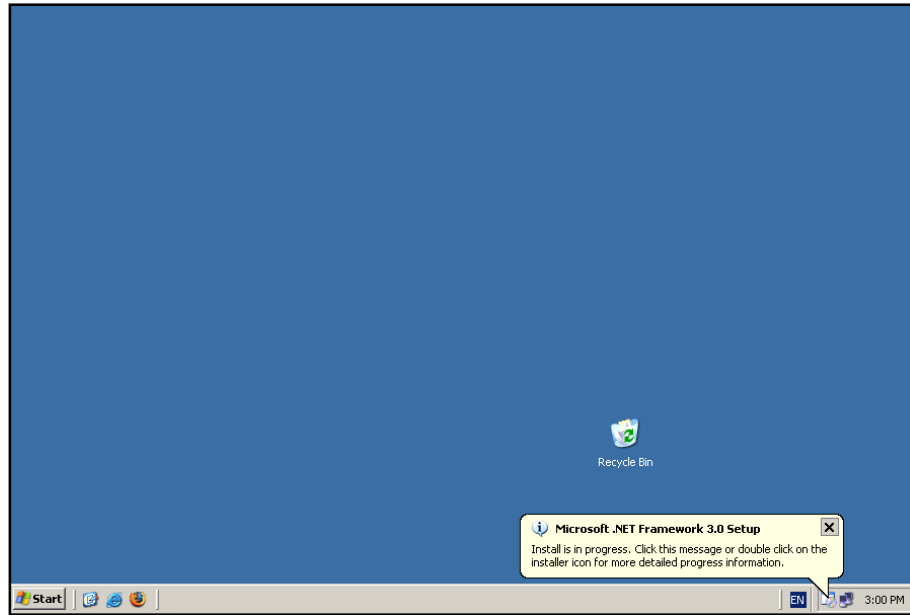


Log onto the WSS v3 server as an administrator and double click the downloaded package to commence the installation. The first step of this process will be the extraction of the files.

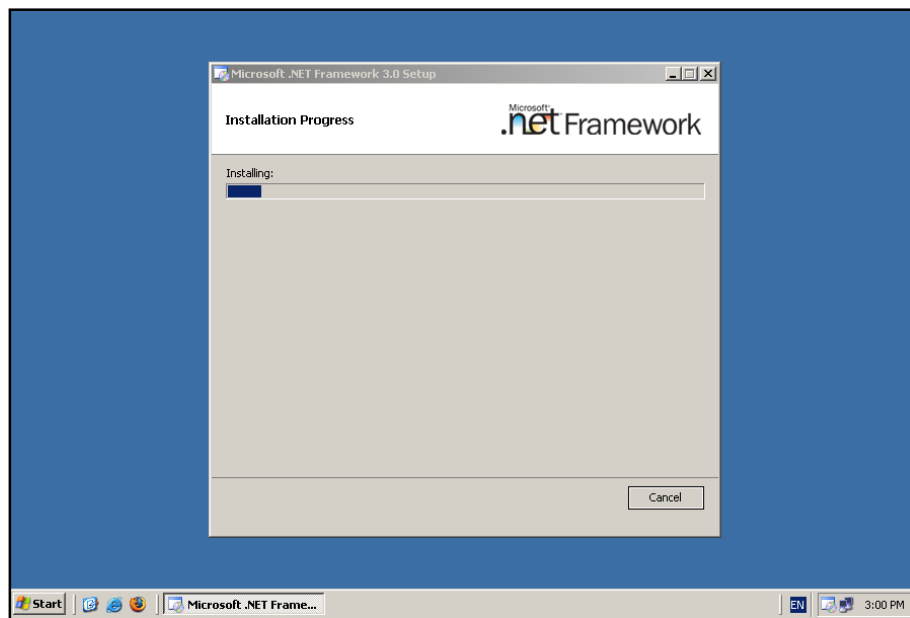


Check the option to accept the license agreement and press the **Install** button.

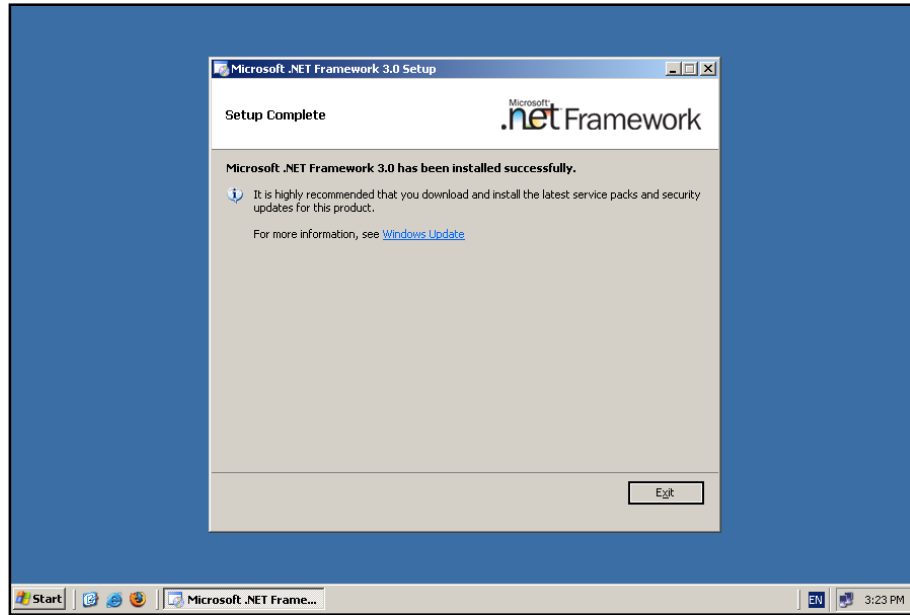
## Chapter 14 – Installing Prerequisites



The installation process will now minimize to the task bar. You can monitor the progress by clicking the bubble that appears in the bottom right of the screen.



The installation will continue.



When complete you should see a window like that shown above. Click the **Exit** button to complete the installation. It is also recommended that you reboot your server after this installation even if the server doesn't prompt you to do this.

Once installation is complete it is also worthwhile to run Windows Update to ensure that all the latest patches for the DotNet software have been applied.

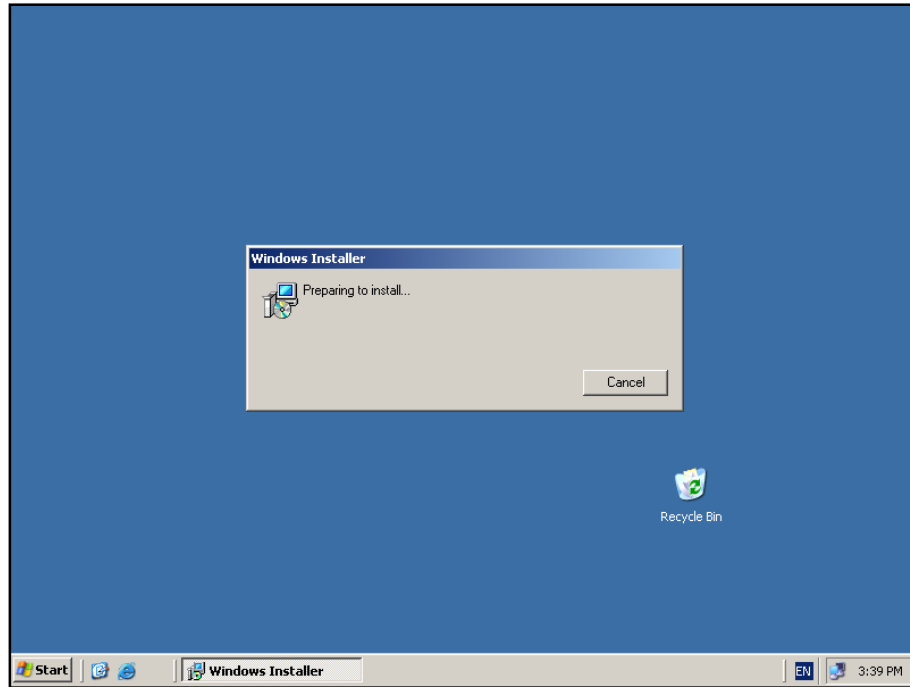
### 14.4 Microsoft SQL Server Management Studio Express

Many of the lower end databases from Microsoft (i.e. SQL Server 2005 Embedded Edition and SQL Server 2005 Express) do not come with any graphical management tools. Working with these databases via a command line is possible but a free graphical management tool is available from Microsoft. You can download it here:

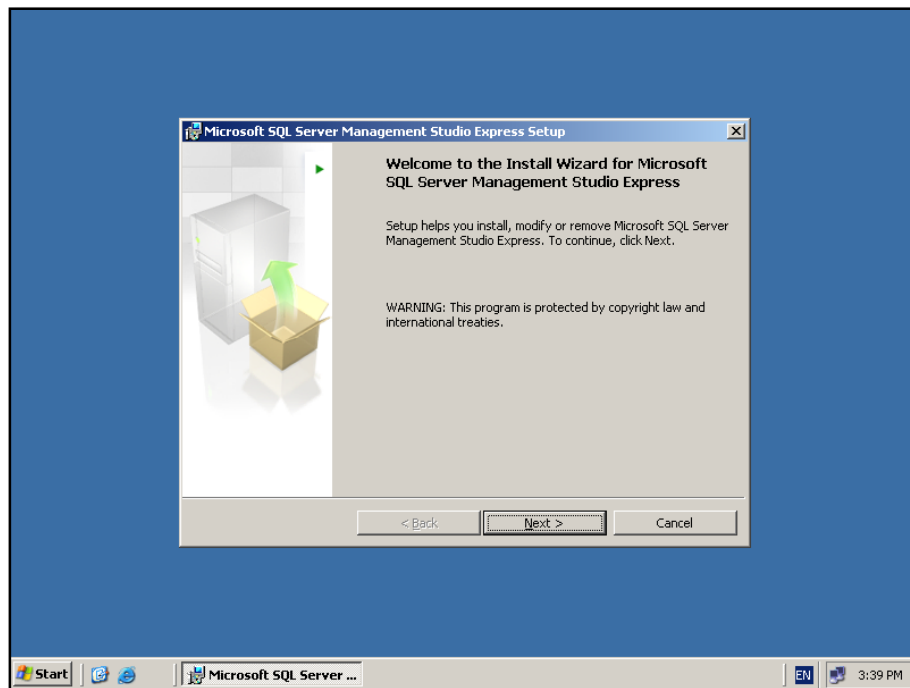
<http://www.microsoft.com/downloads/details.aspx?FamilyID=c243a5ae-4bd1-4e3d-94b8-5a0f62bf7796&DisplayLang=en>



## Chapter 14 – Installing Prerequisites

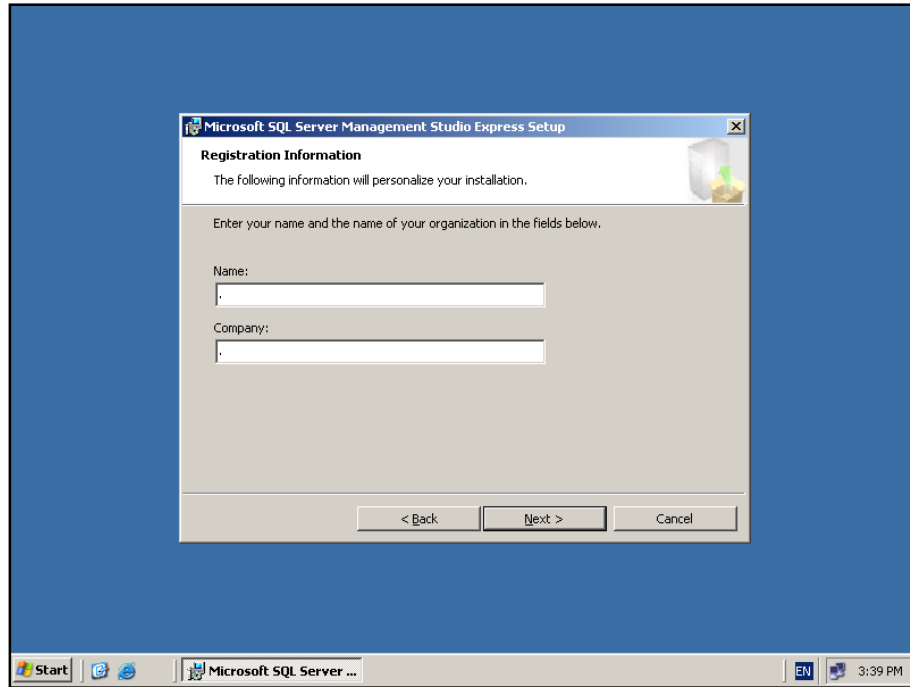


Login to the WSS v3 server as an administrator and launch the downloaded file to commence the installation.

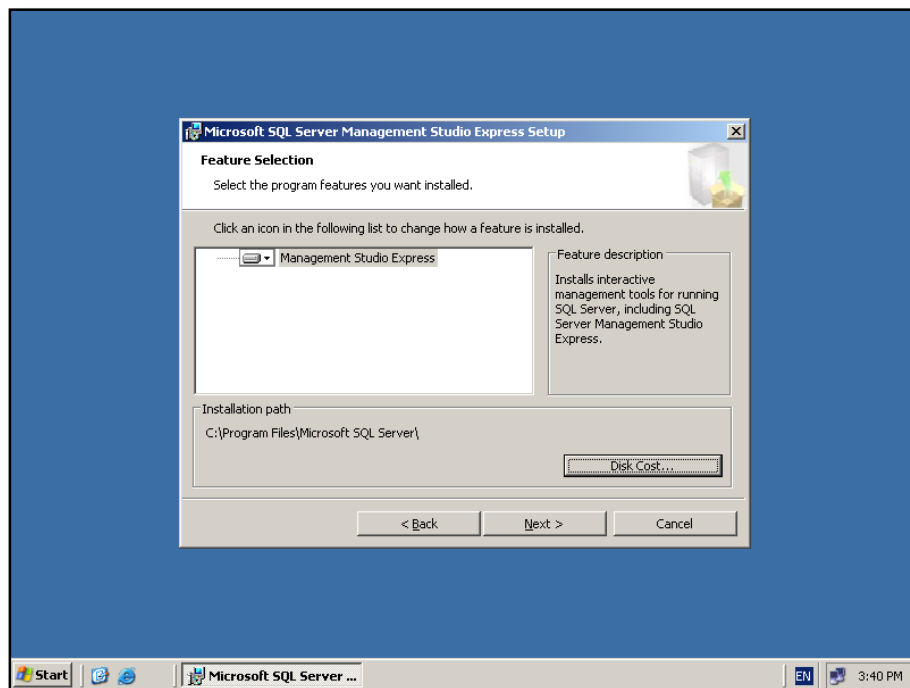


Press **Next** to continue.

## Chapter 14 – Installing Prerequisites

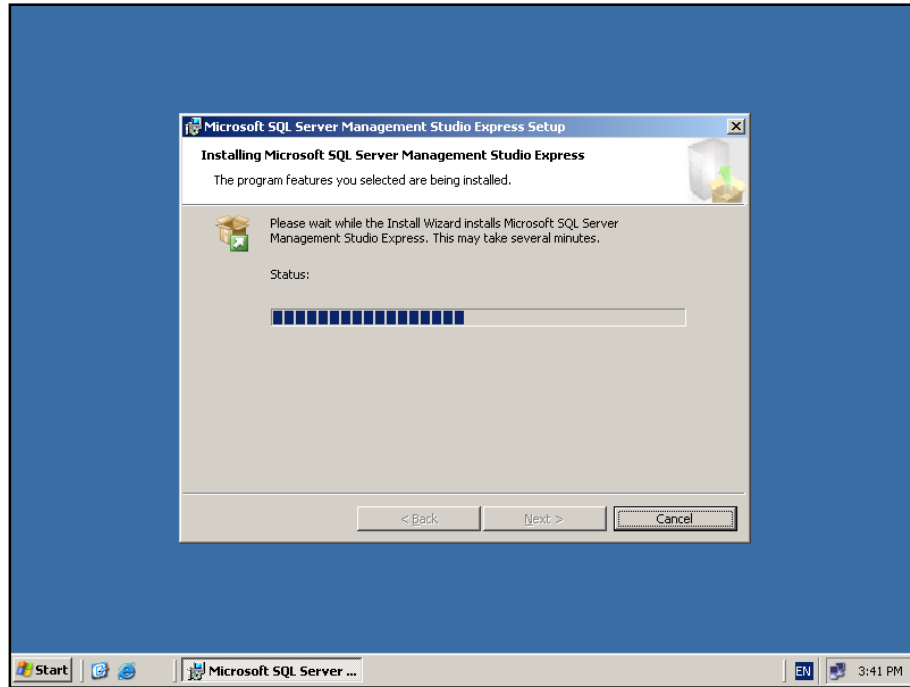


Enter company details and press **Next** to continue.

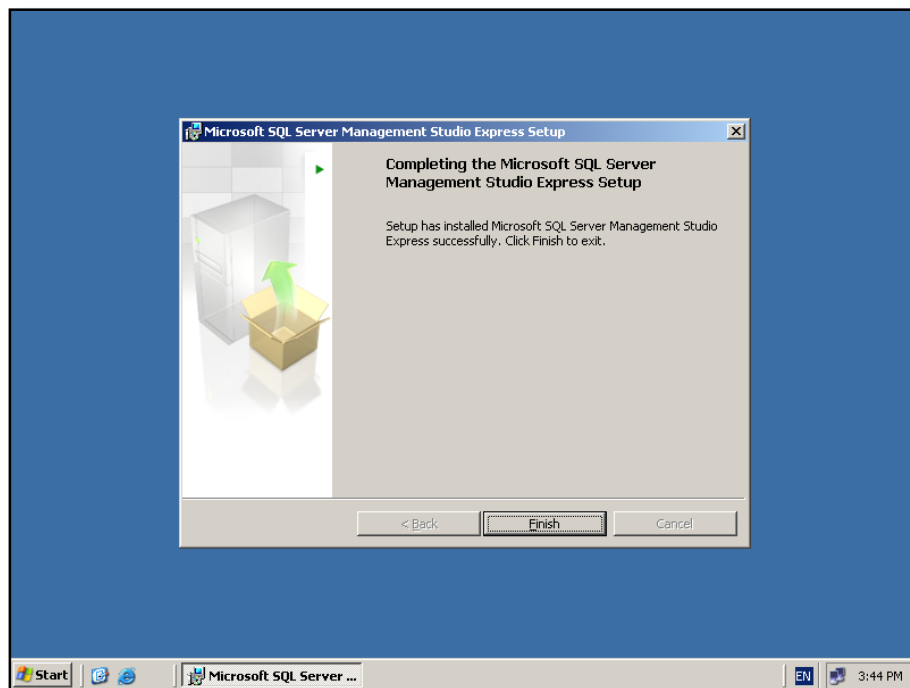


You are not able to nominate an alternate path for the Management tools. They will be installed into *C:\Program Files\Microsoft SQL Server\*. Press **Next** to continue.

## Chapter 14 – Installing Prerequisites

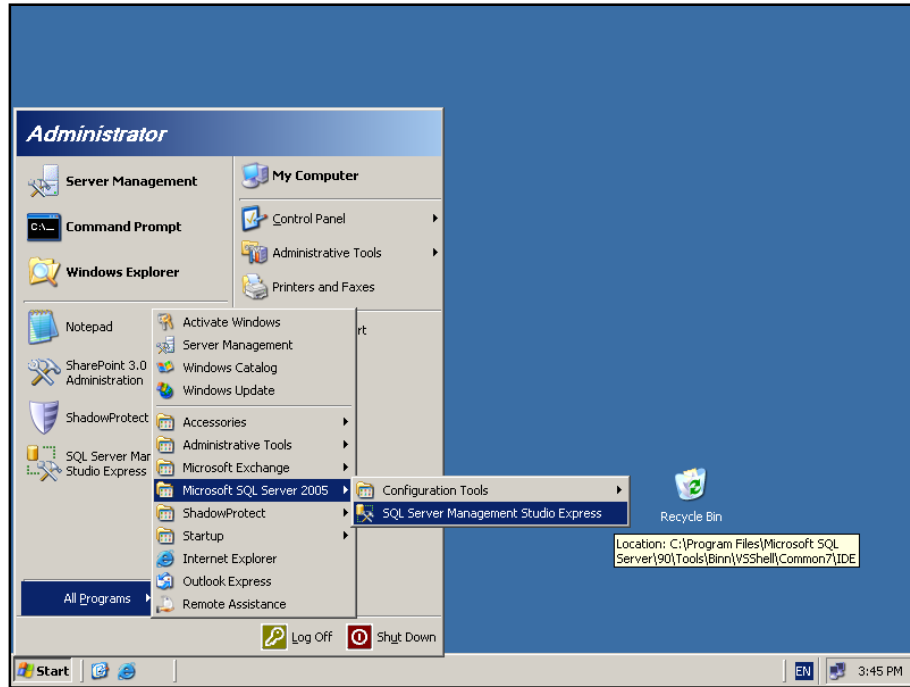


The installation will now copy the required files.

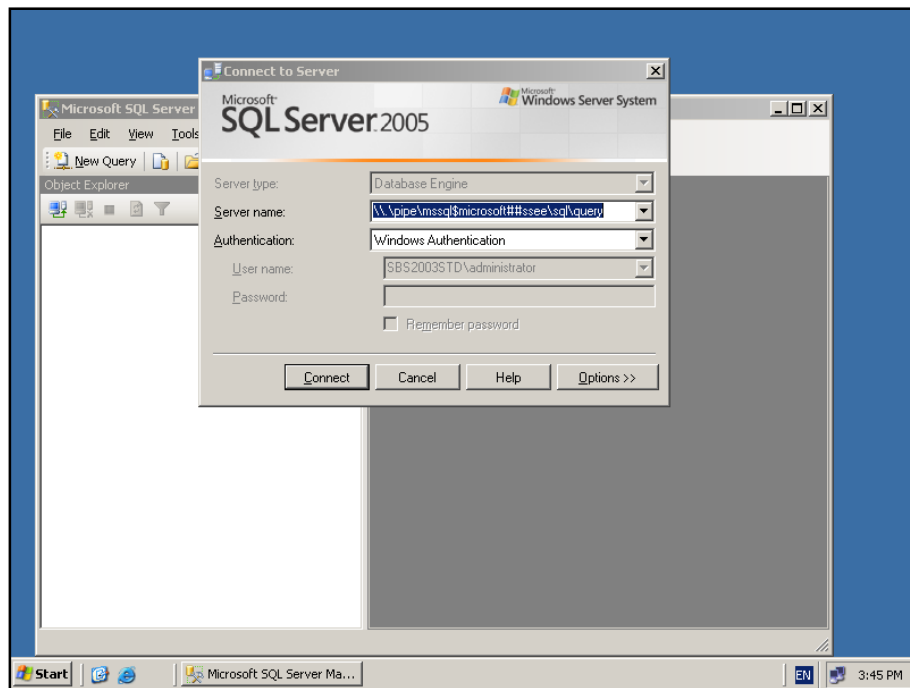


Press **Finish** to complete the installation.

## Chapter 14 – Installing Prerequisites



You can access the Management tools on the WSS v3 server via **Start | All Programs | Microsoft SQL Server 2005 | SQL Server Management Studio Express**.

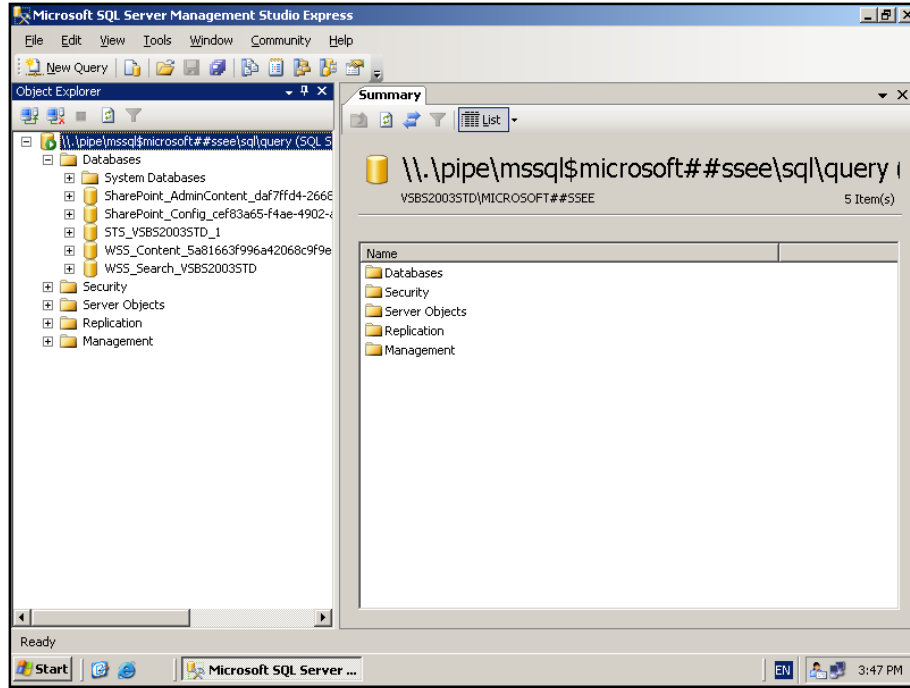


When run you will be prompted to enter the Server name and authentication method. Note for SQL Server 2005 Embedded Edition you will need to enter the following as the Server name:

## Chapter 14 – Installing Prerequisites

\\.\pipe\mssql\$microsoft##ssee\sql\query

Press the **Connect** button to attach to the server.



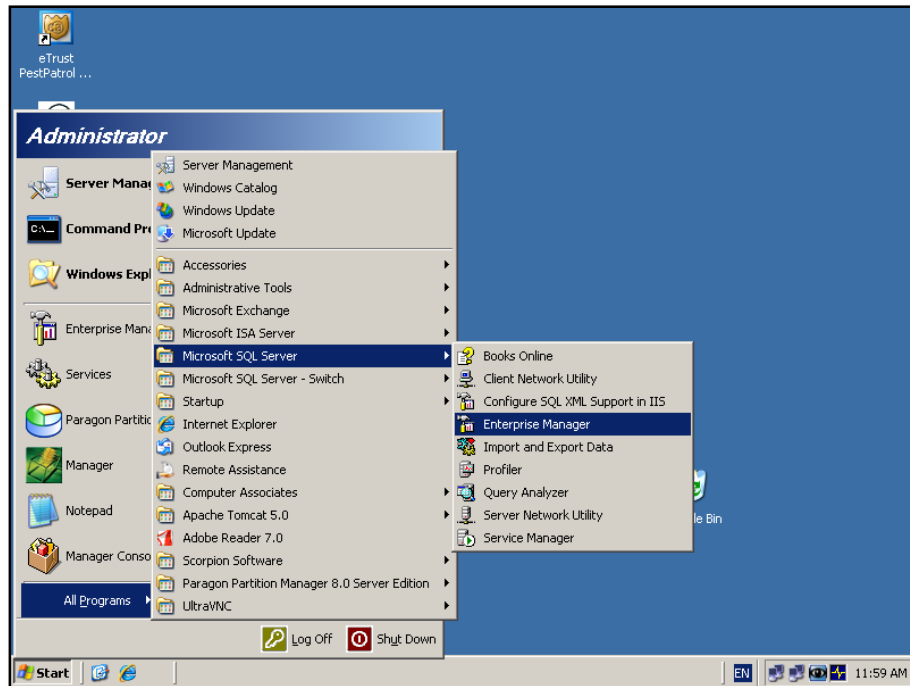
The management screen should now be displayed like shown above.

### 14.5 Determining whether the SharePoint instance has been upgraded

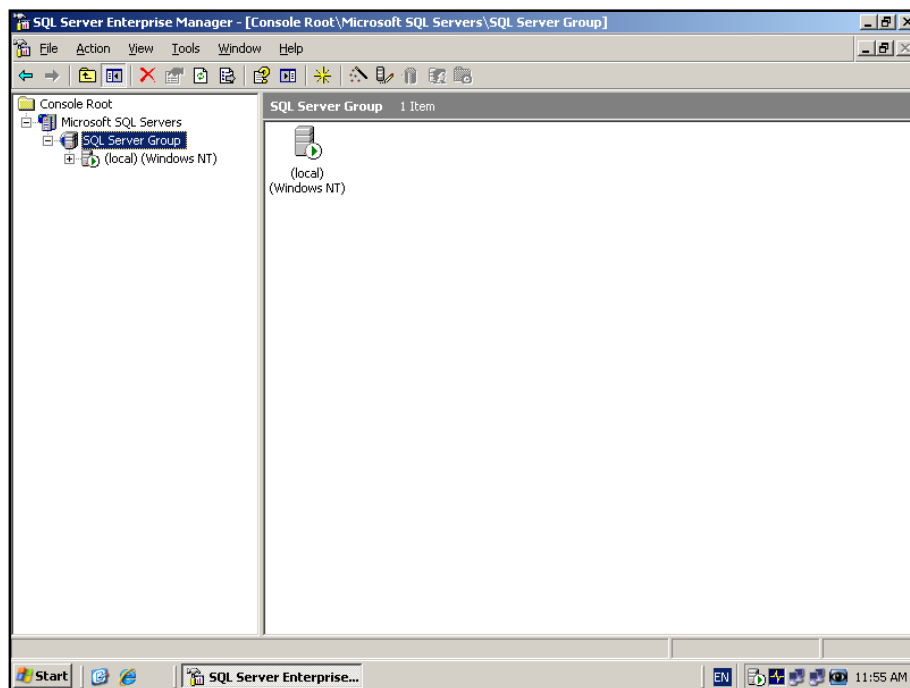
In many instances with WSS v2 that was installed on SBS 2003 Premium the SharePoint instance has been upgraded from WMSDE to full SQL 2000 Server. To ensure a successful migration it is important to ensure this content is ready for migration.

If you have an installation on SBS 2003 Premium the first step is to identify whether the default SharePoint instance has been upgraded to full SQL 2000 Server. To do this open the SQL Enterprise Manager and add the SharePoint instance for viewing.

## Chapter 14 – Installing Prerequisites

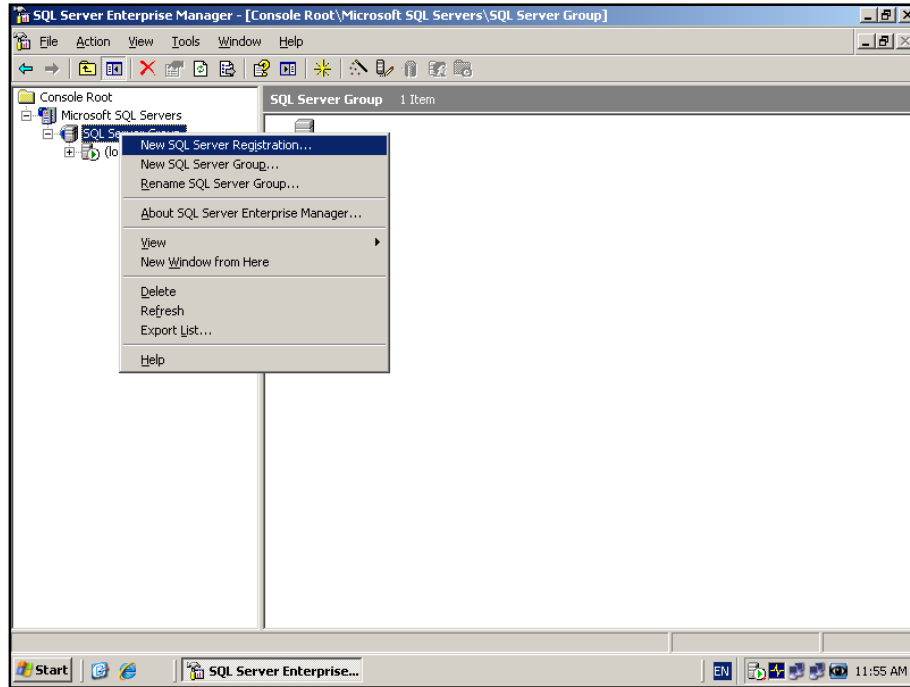


On the SBS 2003 server, login as the administrator and select **Start | All Programs | Microsoft SQL Server | Enterprise Manager**.

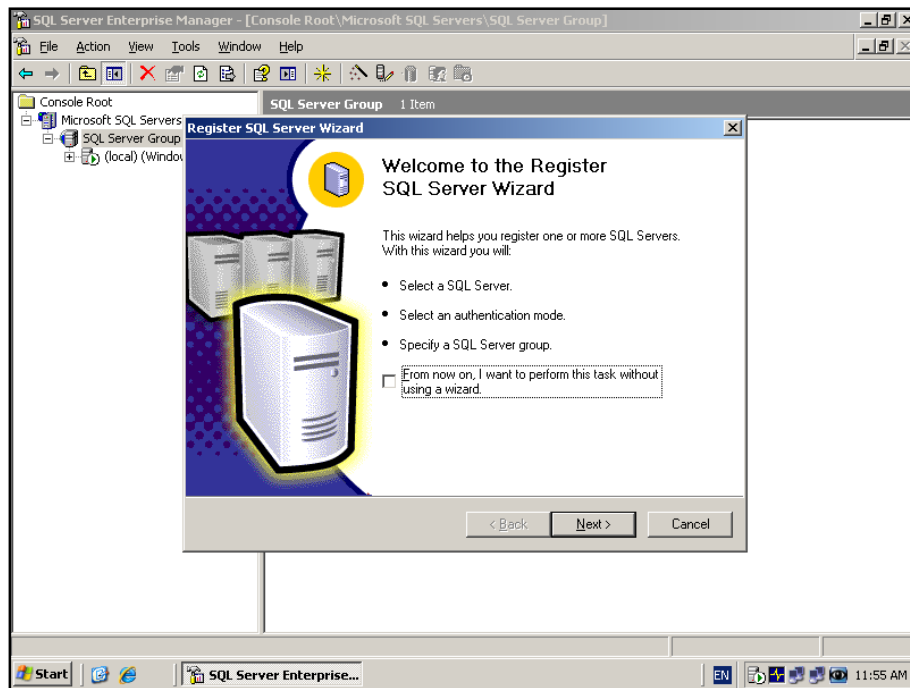


Drill down until you can see *SQL Server Group* in the left hand window.

## Chapter 14 – Installing Prerequisites

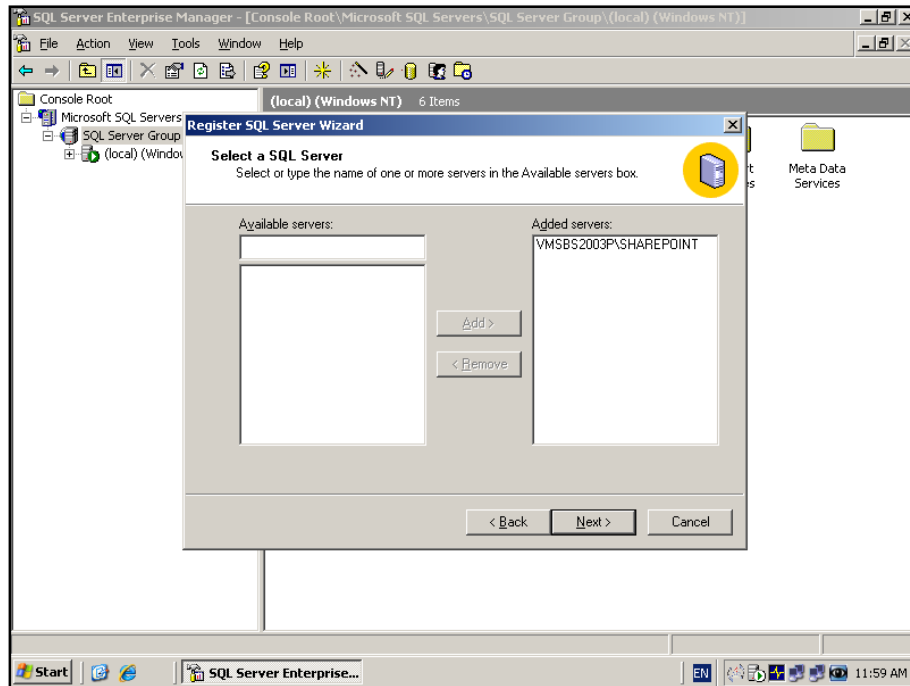


**Right mouse** click on *SQL Server Group* and select **New SQL Registration..** from the menu that appears.



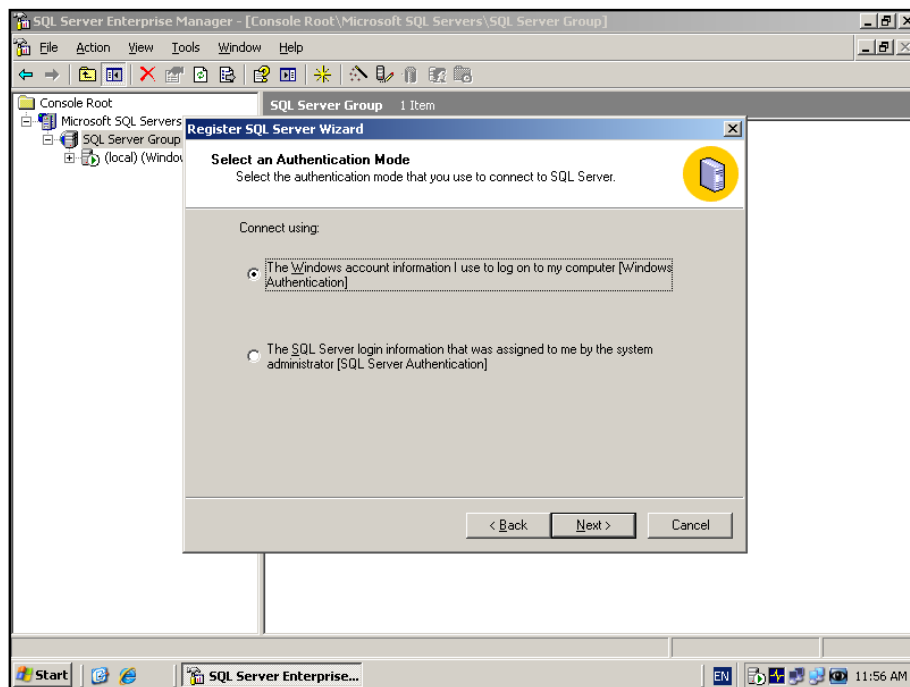
Click **Next** to continue the wizard.

## Chapter 14 – Installing Prerequisites



In the available servers area enter `<SBS_SERVER_NAME>\Sharepoint`, in this case `VMSBS2003P\Sharepoint`.

Press **Next** to continue.

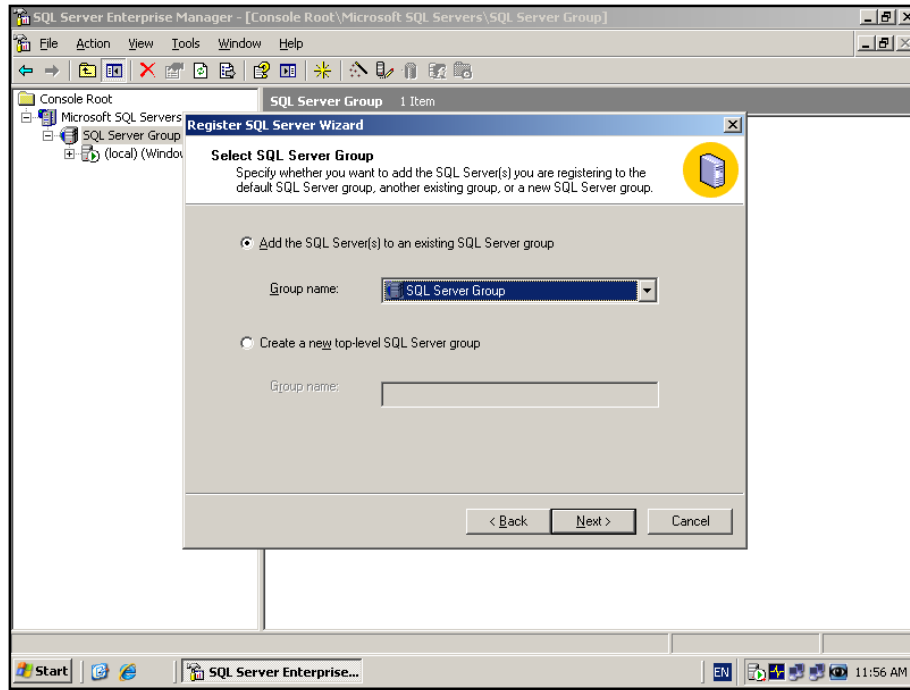




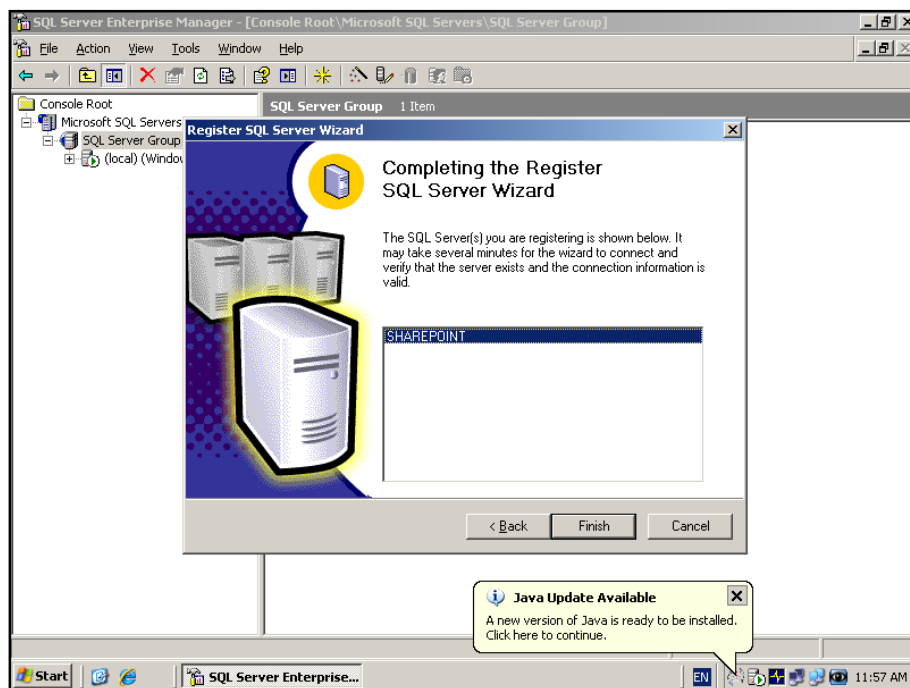
## Chapter 14 – Installing Prerequisites

Select the authentication method to connect to SQL 2000 Server. In most cases this will be top option which is to use the Windows account information.

Select **Next** to continue.

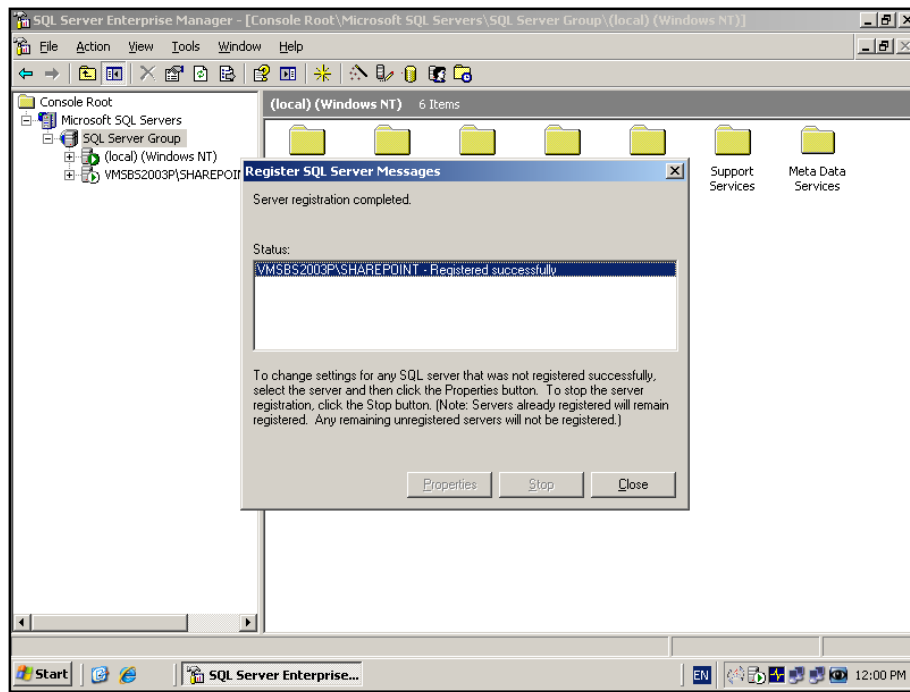


Leave the settings as displayed and press **Next** to continue.



## Chapter 14 – Installing Prerequisites

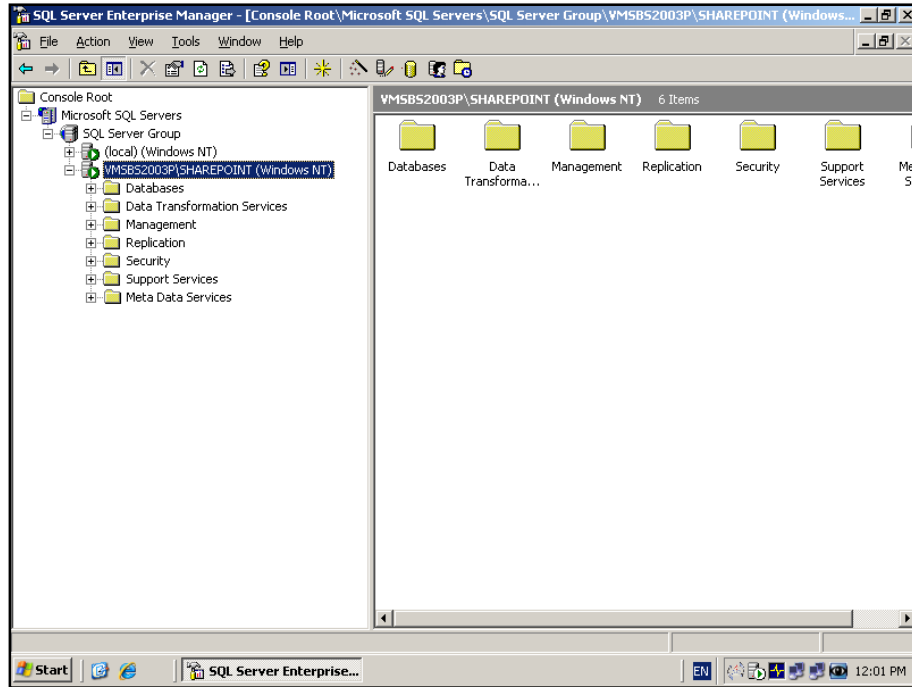
Click **Finish** to complete the wizard.



In a few moments the process should successfully connect to the SQL 2000 Server. If it does not then you need to check the server details and the authentication used to connect to SQL 2000 Server.

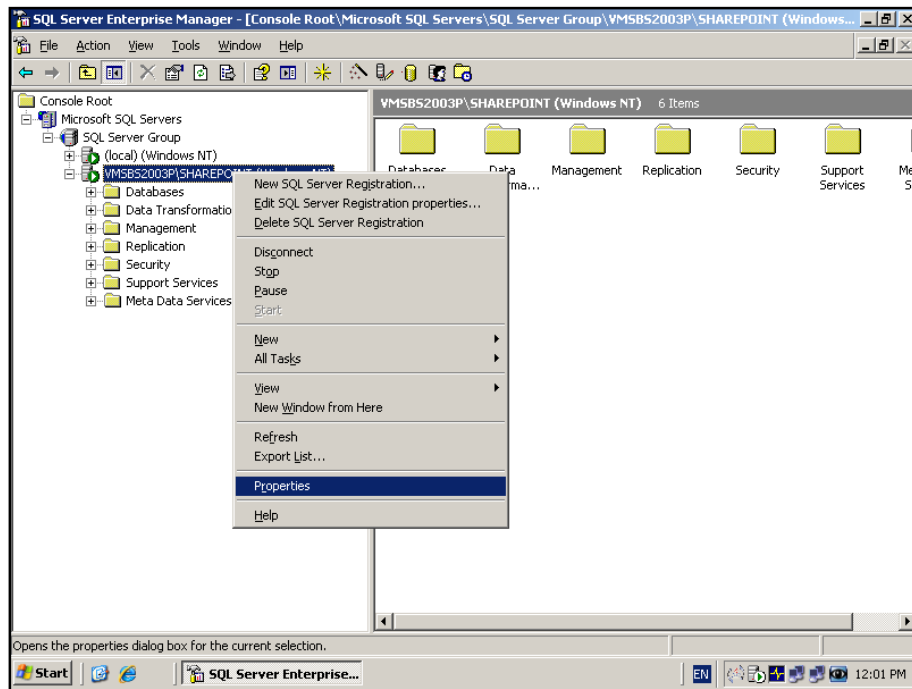
Select **Close** to continue.

## Chapter 14 – Installing Prerequisites



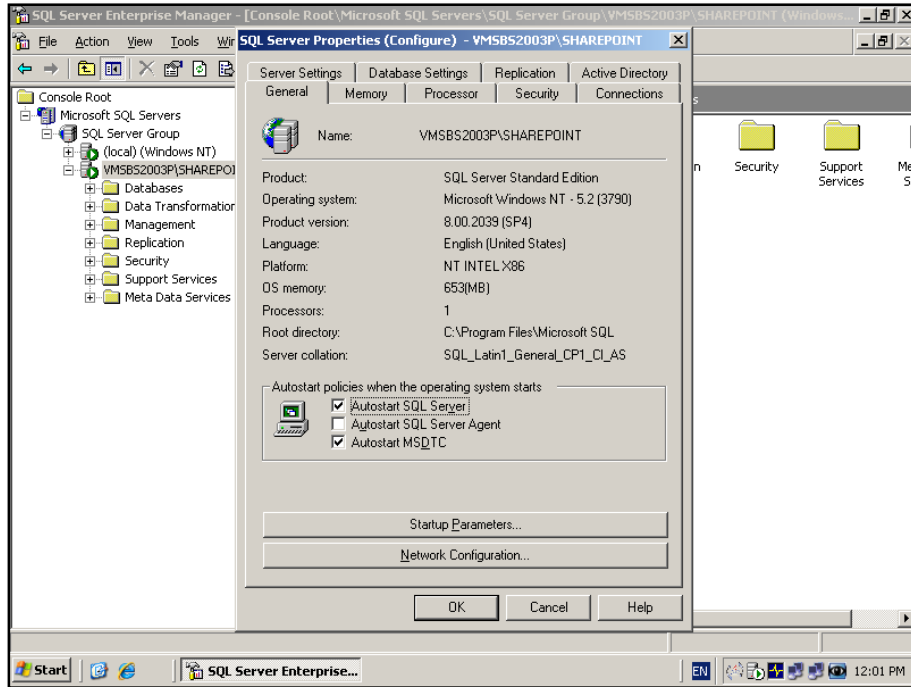
You should now see a new SQL Server under the SQL Server Group. This SQL server should be <SBS\_SERVER\_NAME>\Sharepoint.

Expand the server to see all the elements underneath.



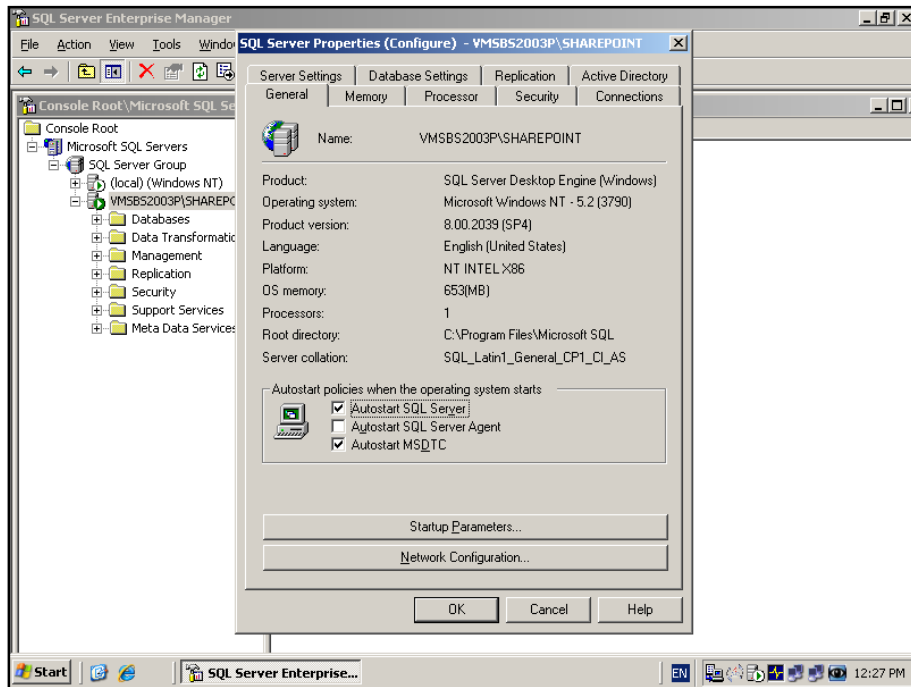
**Right mouse click** on the server and select **Properties** from the menu that appears.

## Chapter 14 – Installing Prerequisites



If you select the *General* tab you should see the Product as *SQL Server Standard Edition* as well as the service pack level further down (in this case SP4).

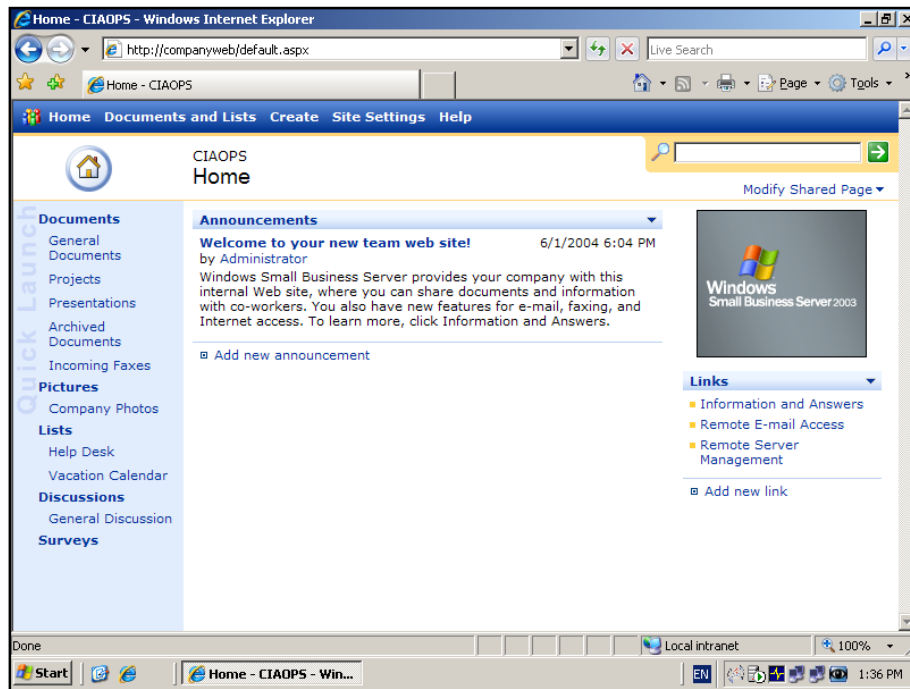
If however the SharePoint instance hasn't been upgraded then you should see something like:



## Chapter 14 – Installing Prerequisites

Note, here that the product reads: *SQL Server Desktop Engine (Windows)* i.e. WMSDE. If this is the case then the WSS v2 install on SBS 2003 hasn't been upgraded and you should be able to proceed as normal.

If however your WSS v2 instance has been upgraded to SQL 200 Server, then you need to ensure that it has all the latest service packs applied. You will then need to check whether Full-Text Indexing has been enabled and if it has, disable it prior to proceeding with the migration.

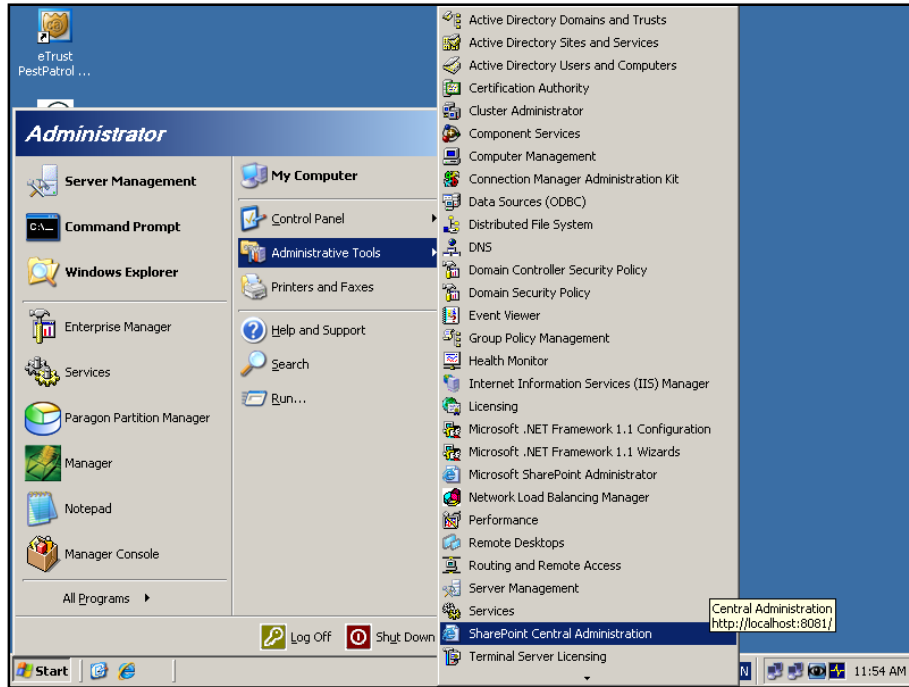


### 14.6 Disabling Full-Text Searching in WSS v2

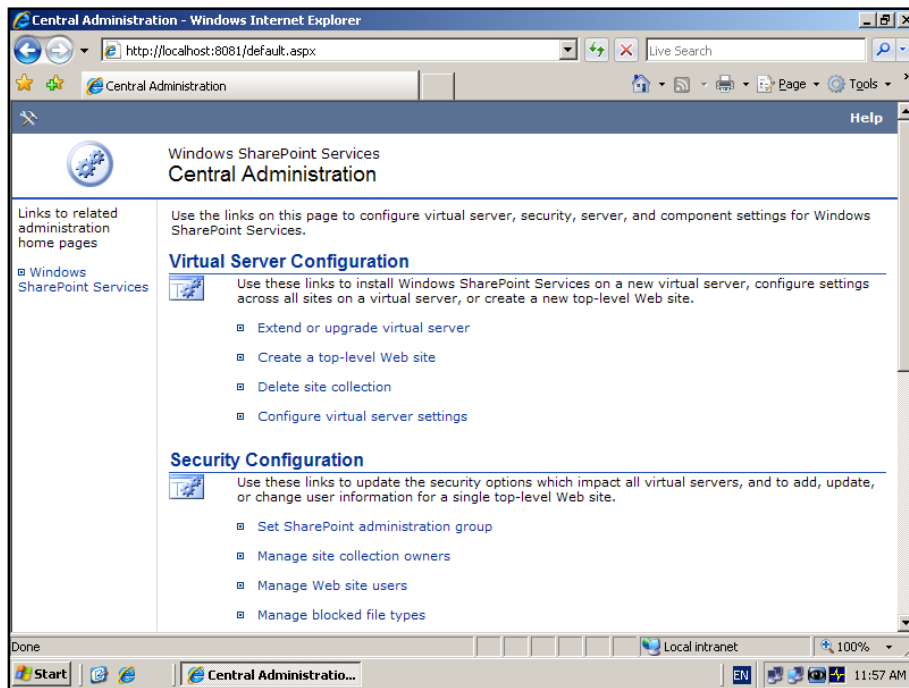
The easiest way to tell whether full text indexing has been enabled on WSS v2 is simply to view the WSS v2 site. To do this, simply open a web browser and type <http://companyweb> into the address. If full text indexing has indeed been enabled you will see the search line in the top right of the window.

Full text indexing on WSS v2 needs to be disabled prior to any migration.

## Chapter 14 – Installing Prerequisites

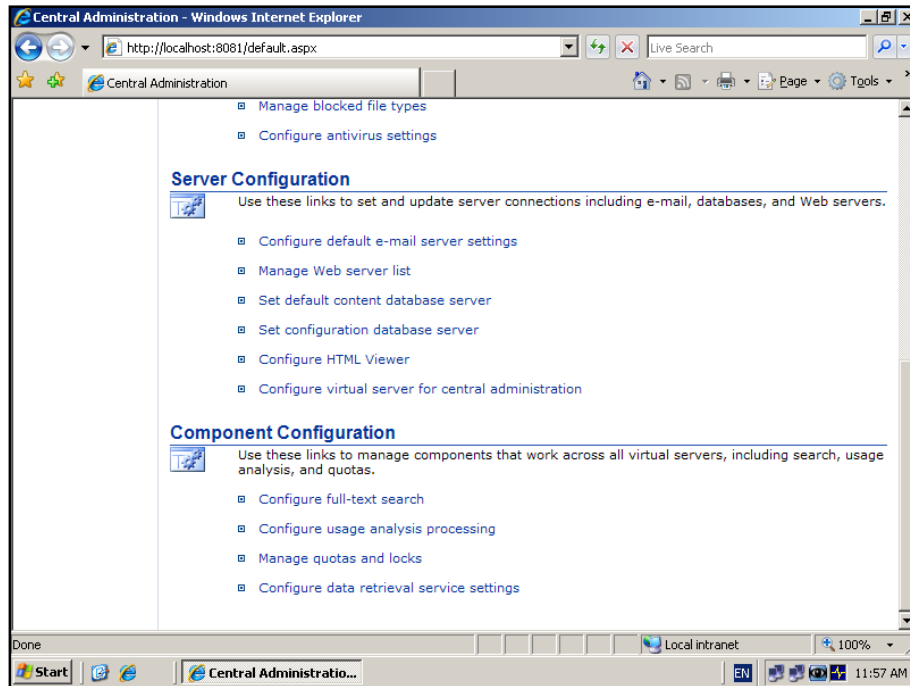


To disable full text indexing on WSS v2 logon to the SBS 2003 server as an administrator and select **Start | Administrative Tools | SharePoint Central Administration**.

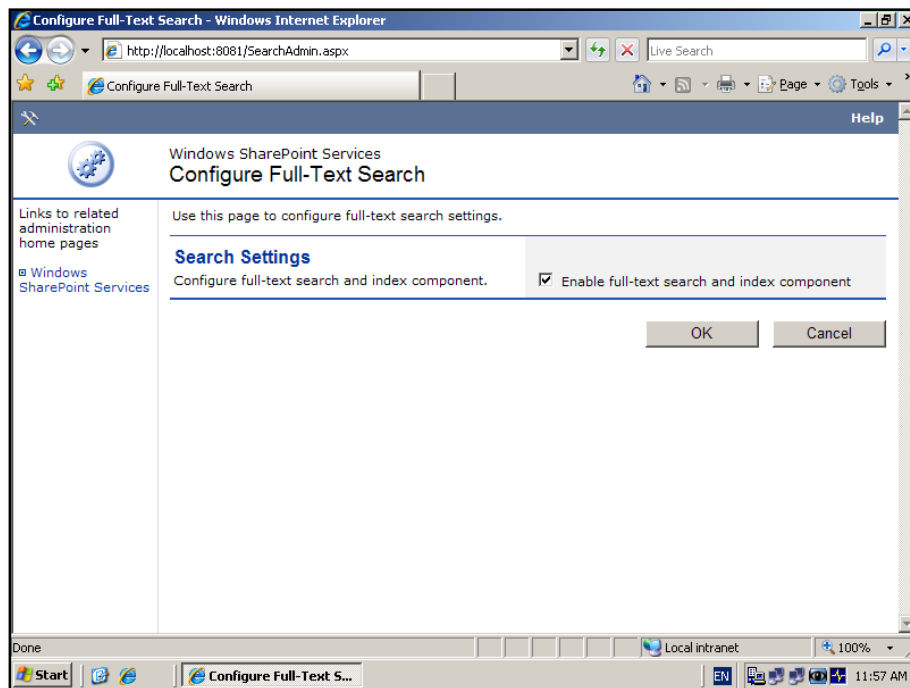


When the *Central Administration* site appears scroll down to the bottom of the screen.

## Chapter 14 – Installing Prerequisites

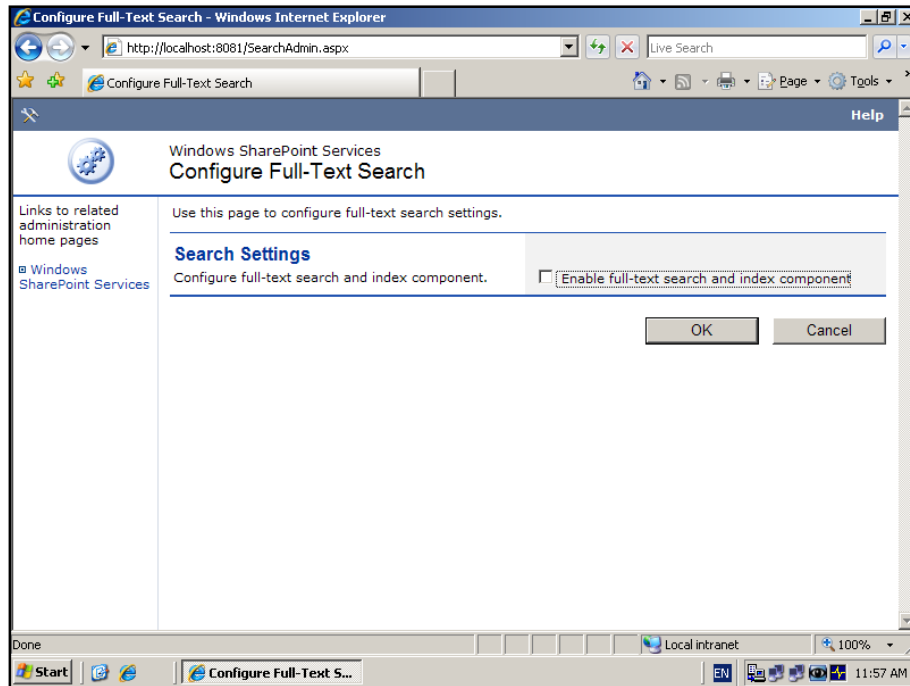


Under the *Component Configuration* section select the **Configure full-text search** link.

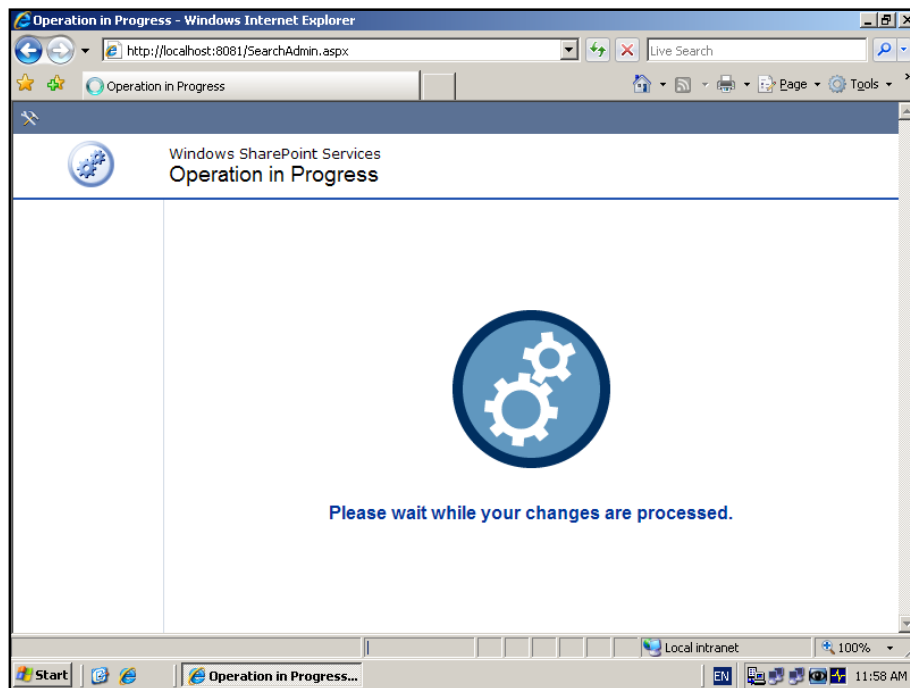


You should now see a check box indicating that full-text search is enabled. Simply **uncheck** this box.

## Chapter 14 – Installing Prerequisites



And press the **OK** button to save the new configuration.

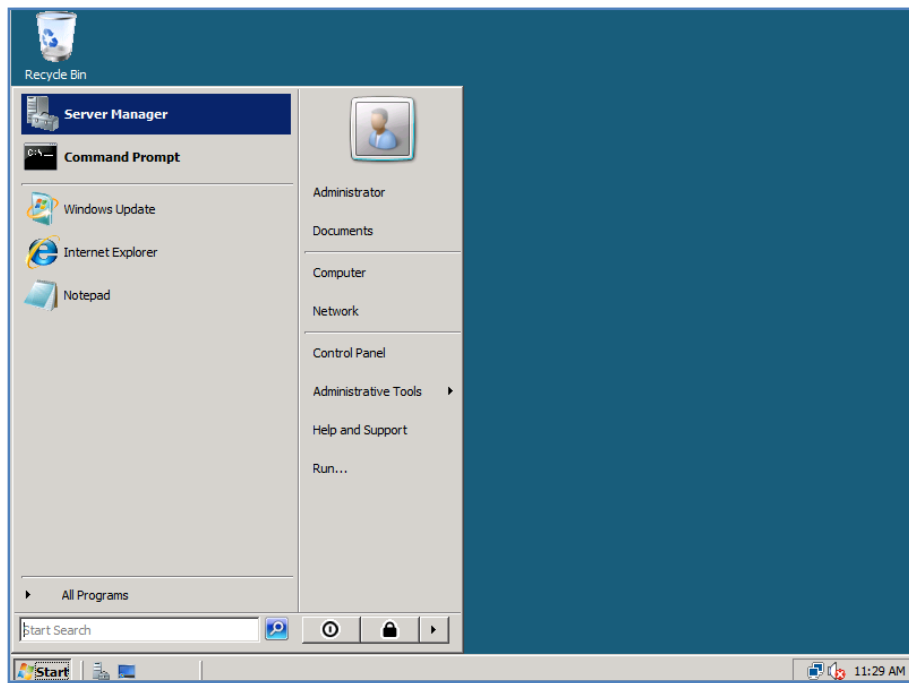


After pressing **OK** the system will now process your changes and return you to the *Central Administration* site.

You can now proceed with the WSS v2 migration.



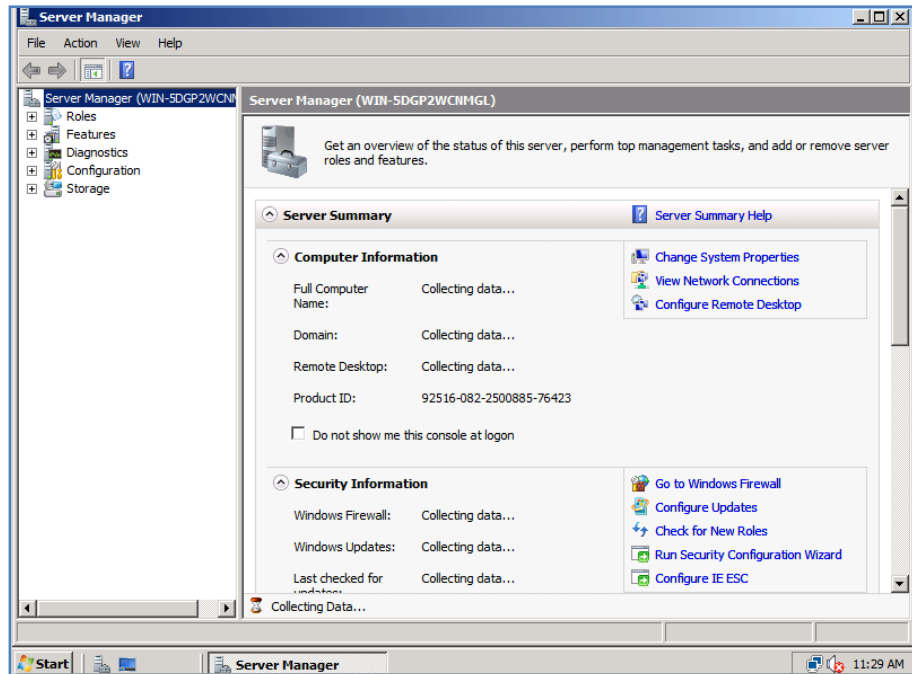
### 14.7 Configuring Windows 2008 for WSS v3



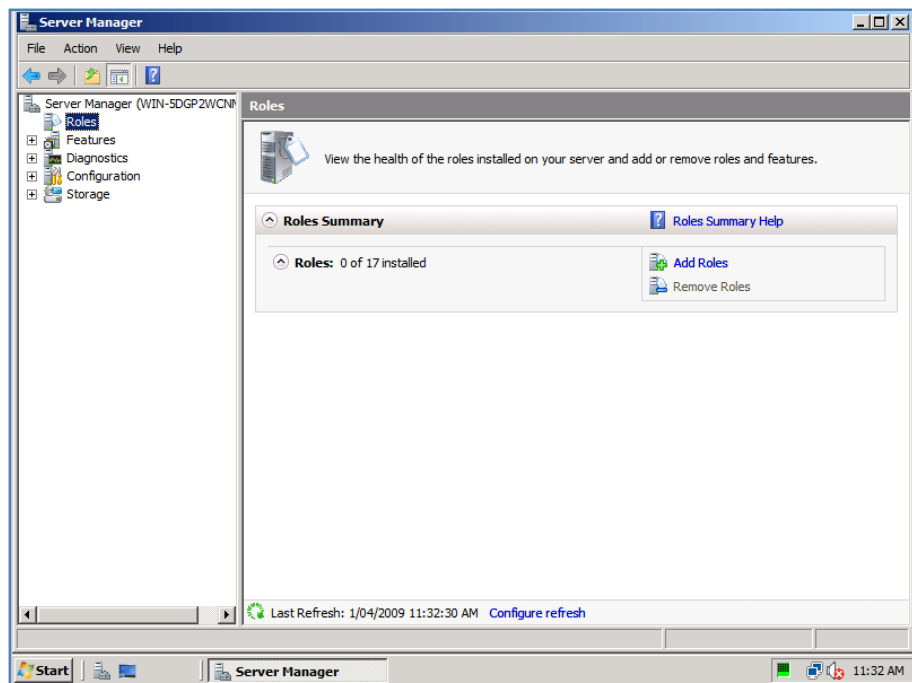
The first step is to configure the appropriate web server role for Windows Server 2008 since it no longer comes enabled by default.

On the Windows 2008 server console select **Start | Server Manager**.

## Chapter 14 – Installing Prerequisites



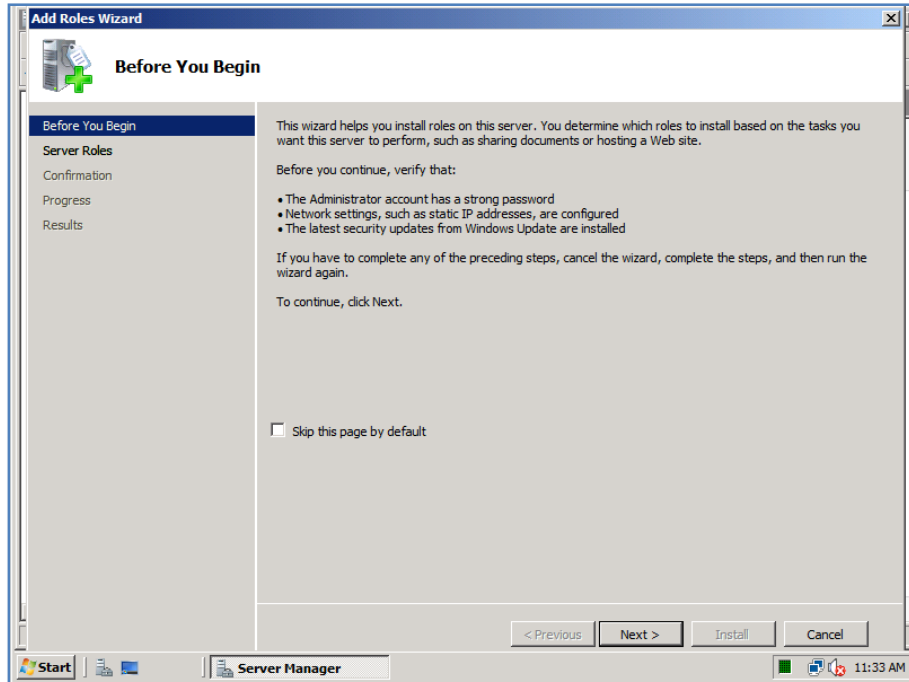
The *Server Manager* window will now appear.



Select the **Roles** sub branch on the left and the right hand side of the screen will update to display the currently enables roles.

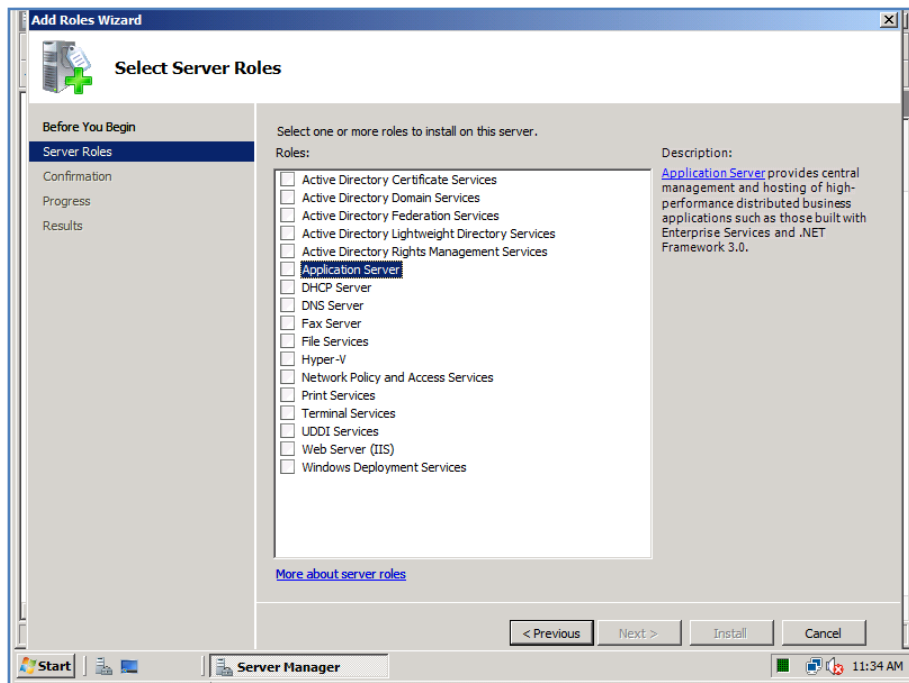
In the above case, there are none, so select the link **Add Roles** on the right.

## Chapter 14 – Installing Prerequisites



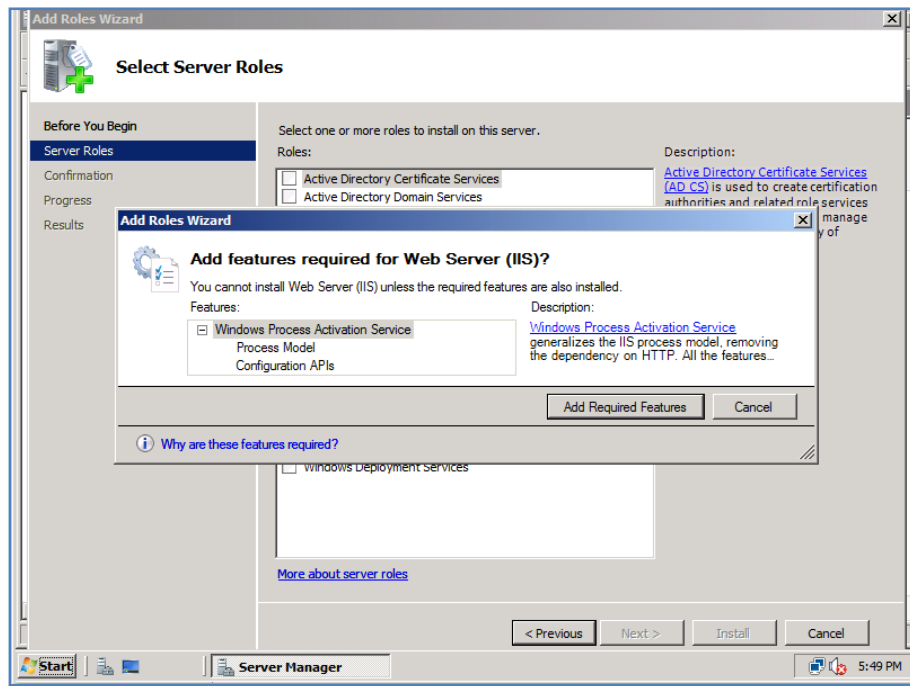
This will launch the *Add Role Wizard* as shown above.

Press the **Next** button to continue.



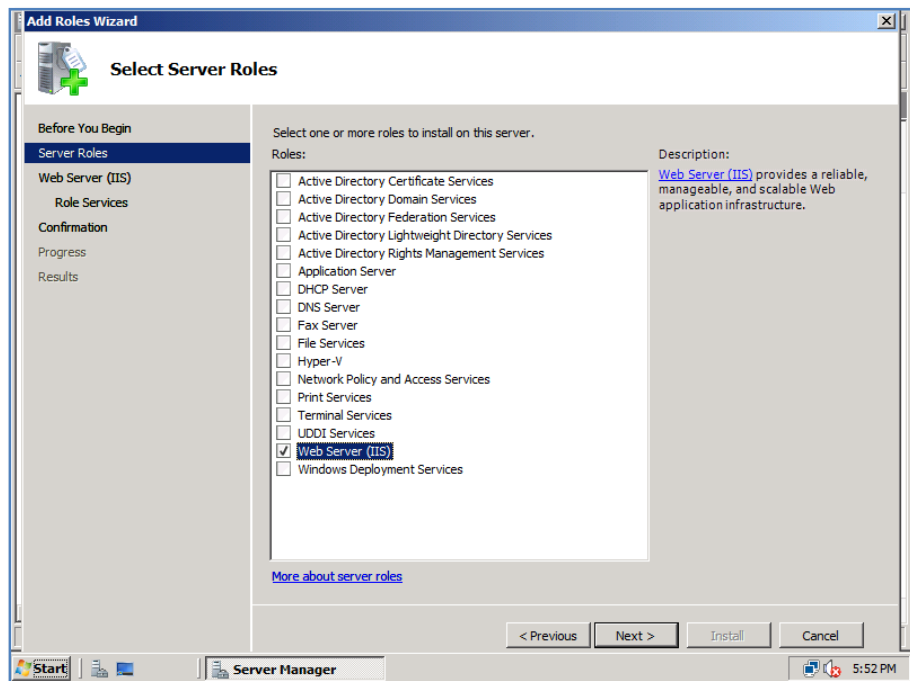
A list of server roles will now be displayed. Select the option **Web Server (IIS)** by placing a tick in the box for this option.

## Chapter 14 – Installing Prerequisites



Immediately upon placing a tick in the *Web Server (IIS)* option, a window like shown above will be presented telling you that a number of required features also have to be added to allow that web server role to function.

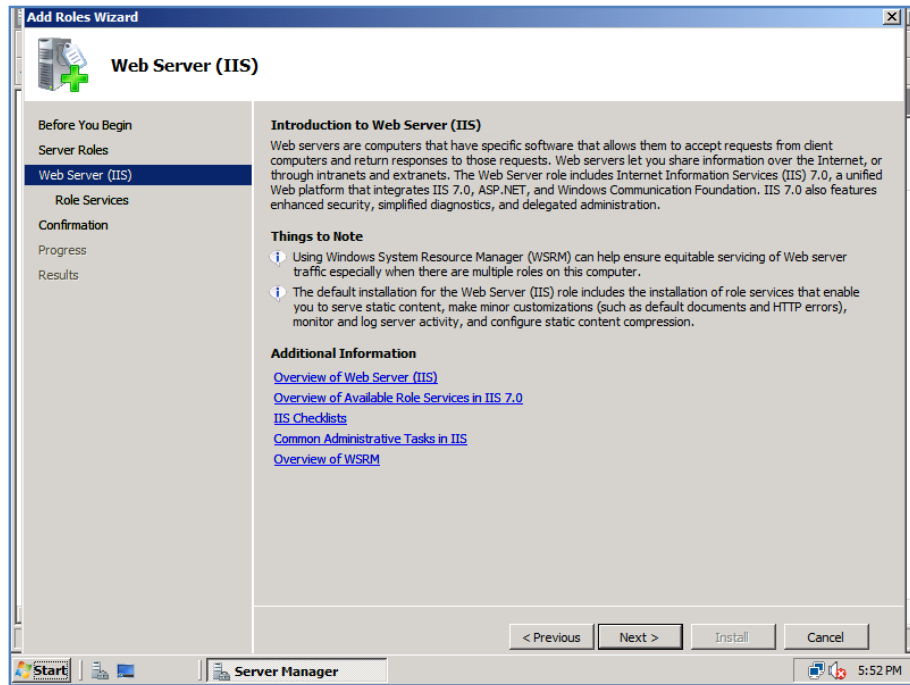
Press the **Add Required Features** button to continue.



## Chapter 14 – Installing Prerequisites

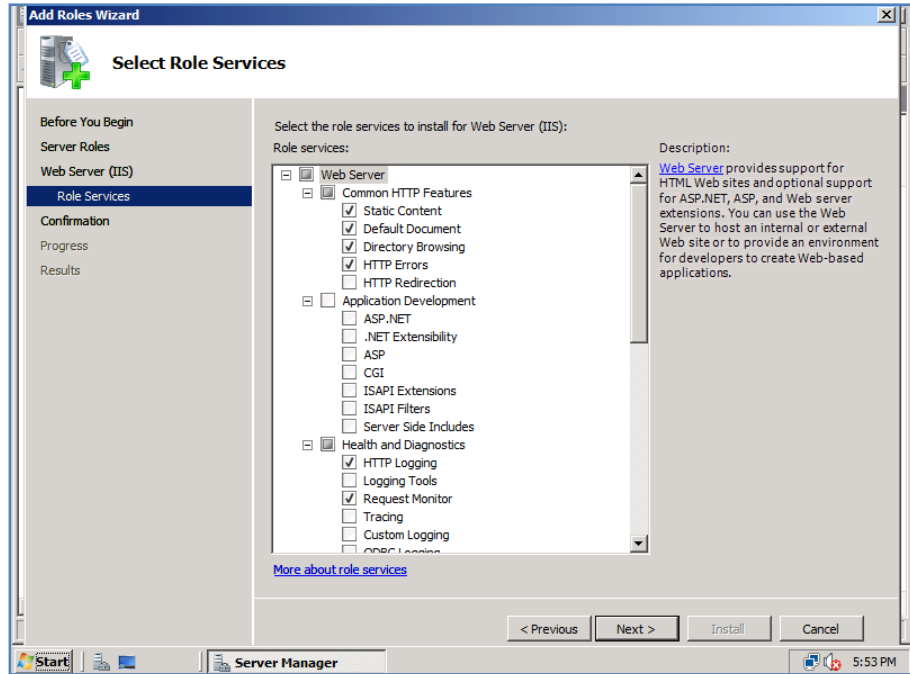
You should now be returned to the previous screen where you should see the *Web Server (IIS)* role is now checked.

Press the **Next** button to continue.



You will now be presented with further information about the Web Server role.

Press the **Next** button to continue.



Now you will see a list of the *Web Server Role Services* displayed. For WSS v3 to function correctly on Windows Server 2008 the following options need to be checked:

### *Web Server*

- Common HTTP Features
  - Static Content
  - Default Document
  - Directory Browsing
  - HTTP Errors

### *Application Development*

- ASP.NET
- .NET Extensibility
- ISAPI Extensions
- ISAPI Filters

### *Health and Diagnostics*

- HTTP Logging
- Logging Tools
- Request Monitor
- Tracing

### *Security*

- Basic Authentication
- Windows Authentication

## Chapter 14 – Installing Prerequisites

- Digest Authentication
- Request Filtering

### Performance

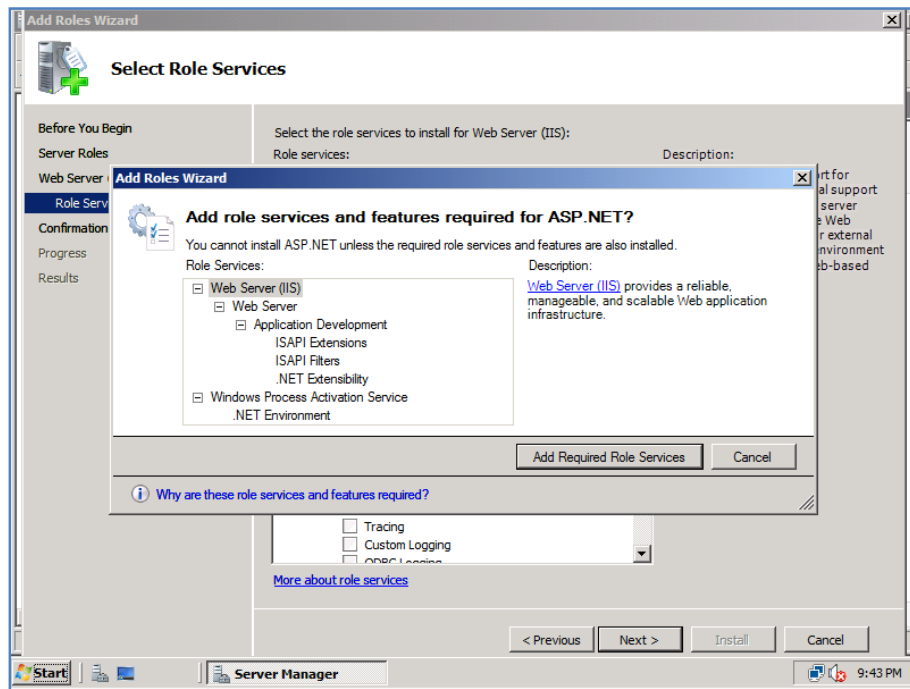
- Static Content Compression
- Dynamic Content Compression

### Management Tools

- IIS Management Console

### IIS 6 Management Compatibility

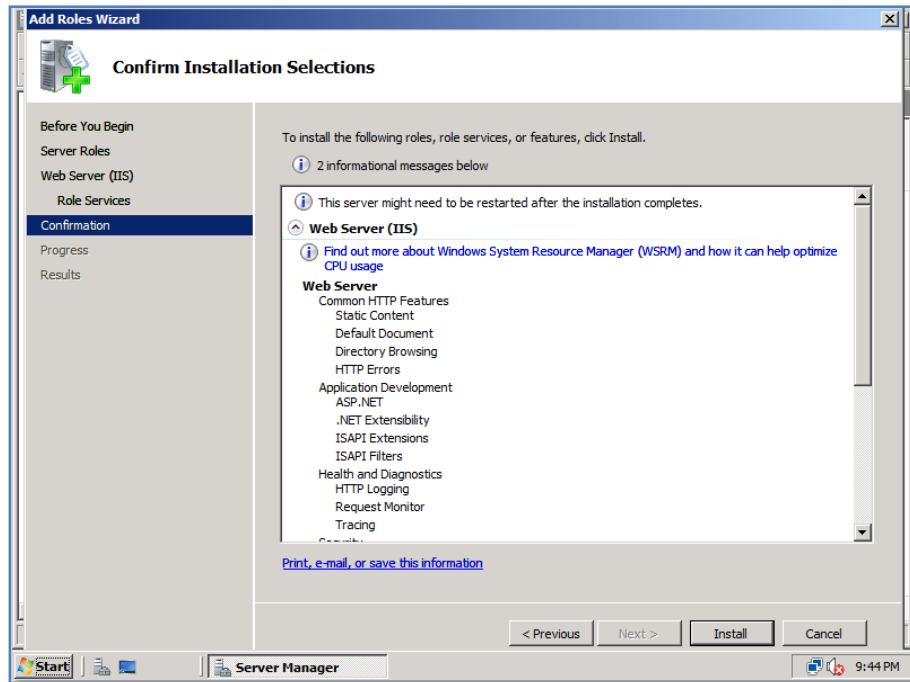
- IIS 6 Metabase Compatibility



Selecting some of these additional *Role Services* may prompt you with a window like shown above, telling you that additional role services and features need to be installed. Select the **Add Required Role Services** button to continue.

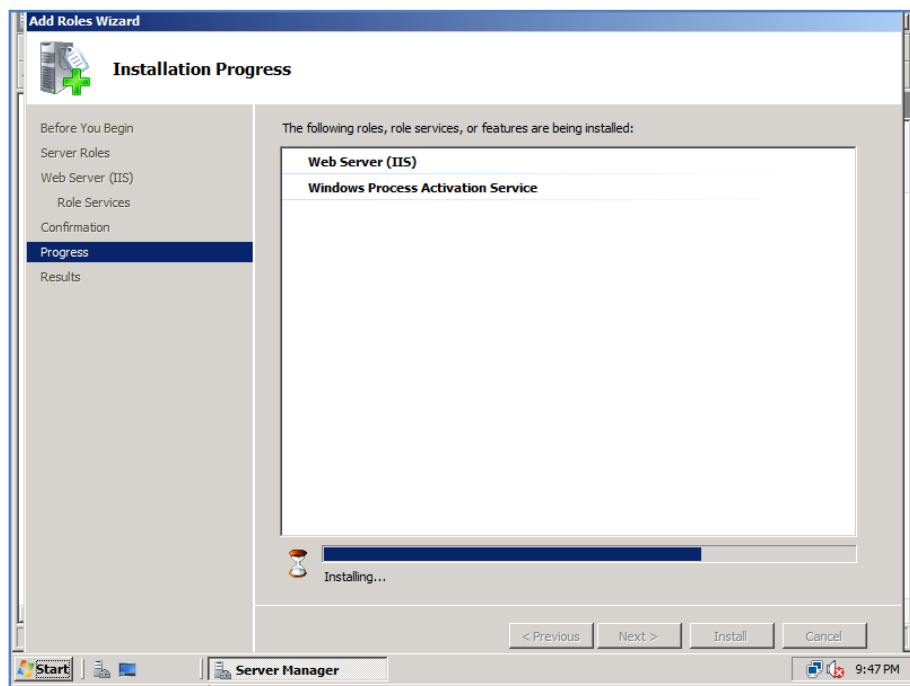
When all the *Role Services* have been added press the **Next** button to continue.

## Chapter 14 – Installing Prerequisites



You will now be presented with a summary screen showing you what items will be installed.

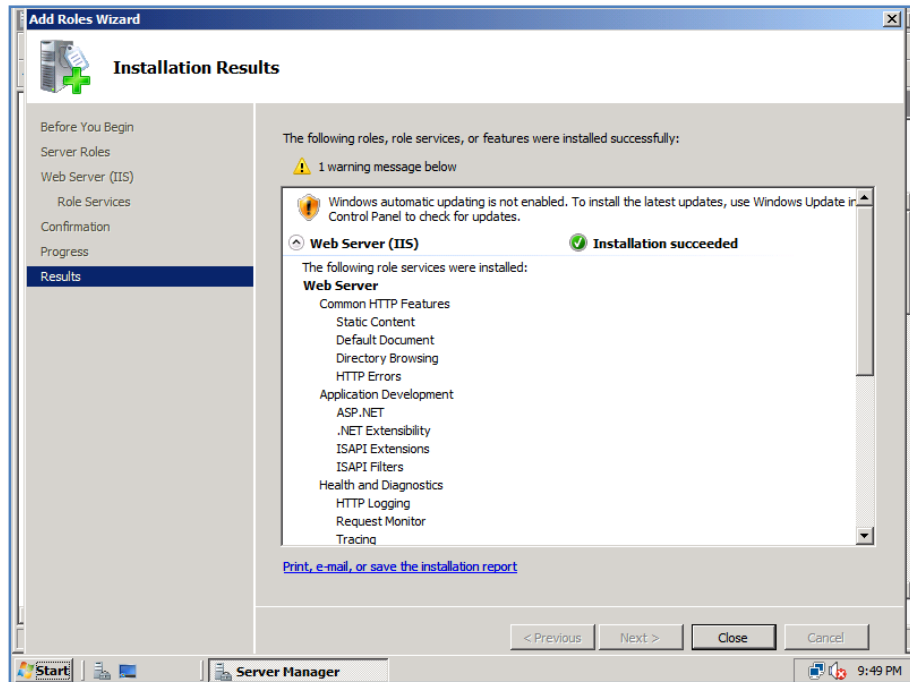
Select the **Install** button to continue.



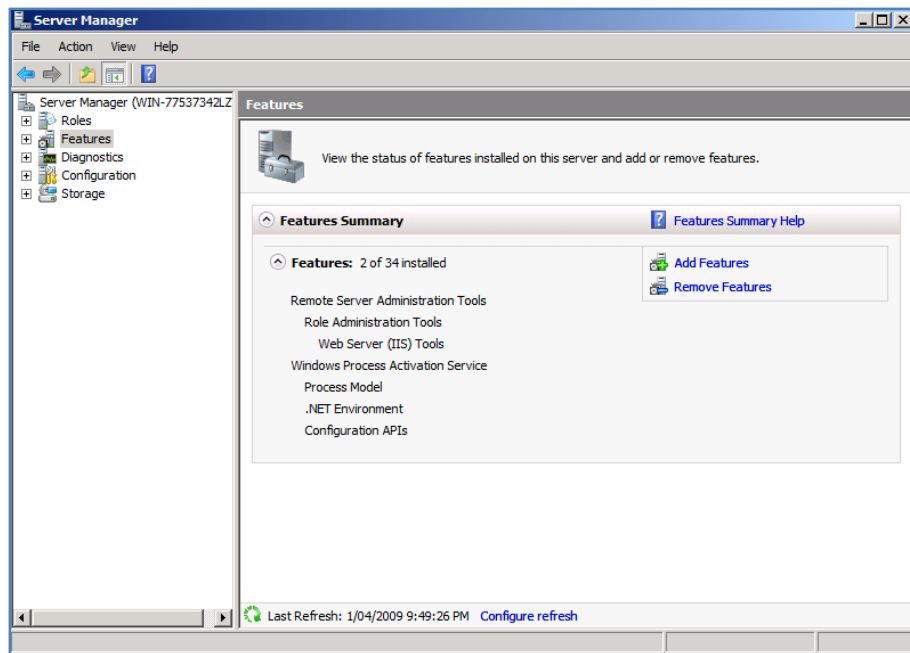
The wizard will now install and configure the features that you previously selected.



## Chapter 14 – Installing Prerequisites



Upon completion, you will be presented with a summary screen. Provided the installation was successful you may now press the **Close** button to complete the process.

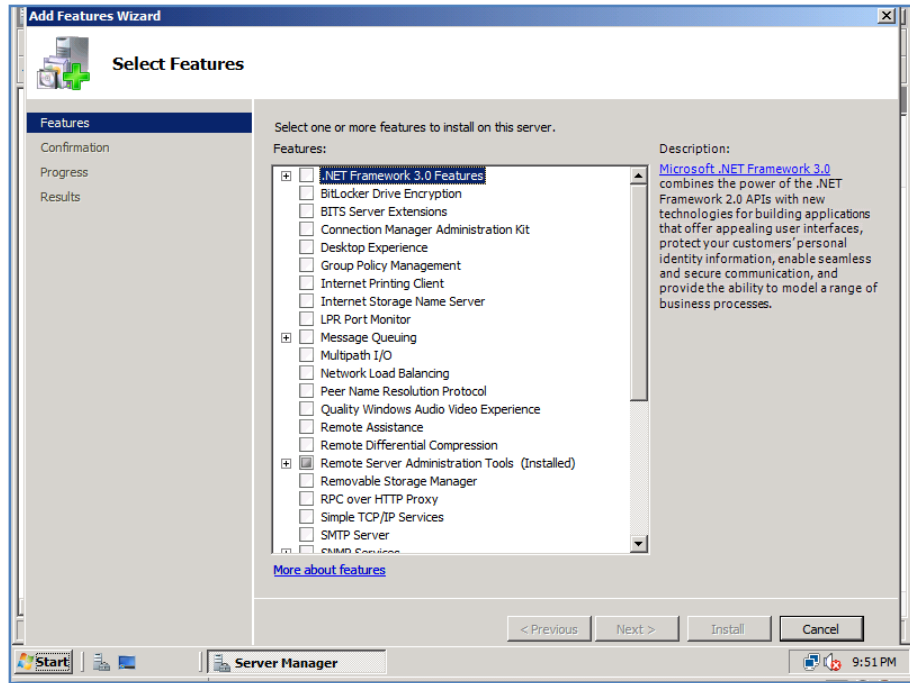


You are then returned to the *Server Manager* window.

## Chapter 14 – Installing Prerequisites

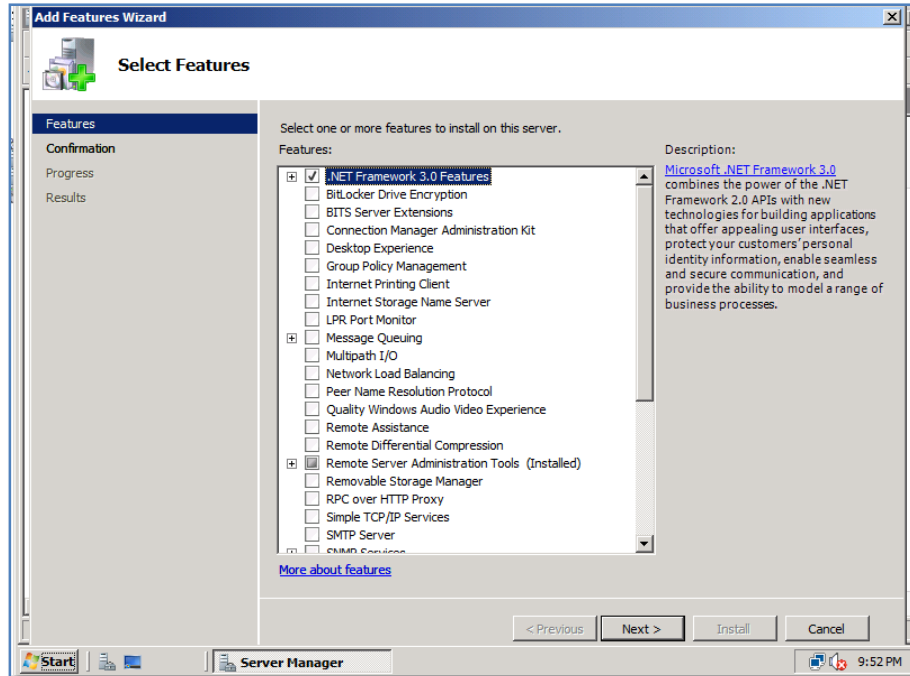
Locate and select the **Features** branch of the tree on the left hand side which appears just under *Roles*. Once selected, you will see a list of the currently installed roles.

Select the **Add Features** links to the right of the screen.

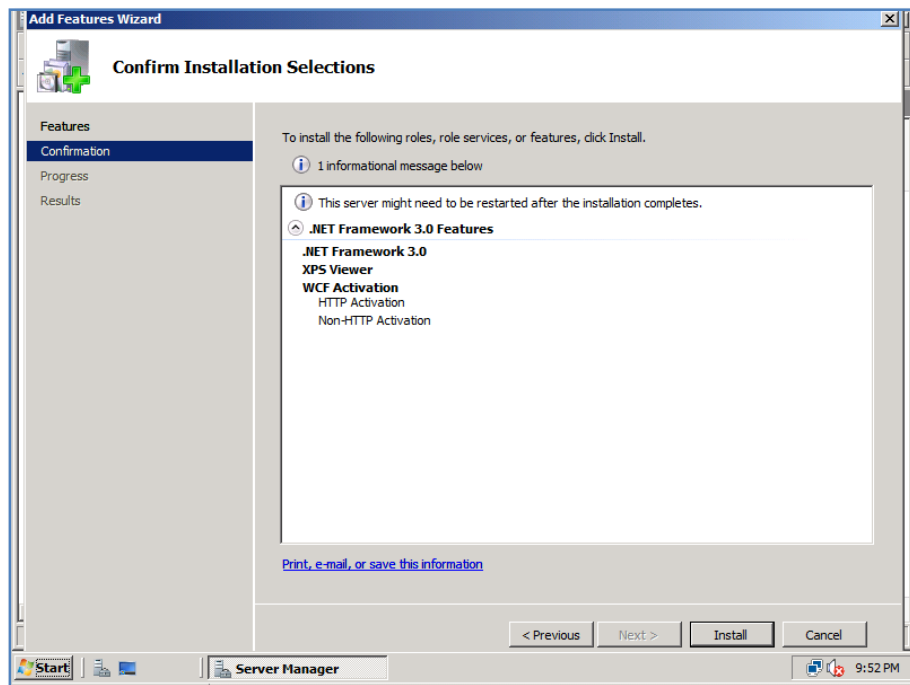


The *Select Features wizard* will now launch. For WSS v3 to operate correctly select the option for **.NET Framework 3.0 Features**.

## Chapter 14 – Installing Prerequisites



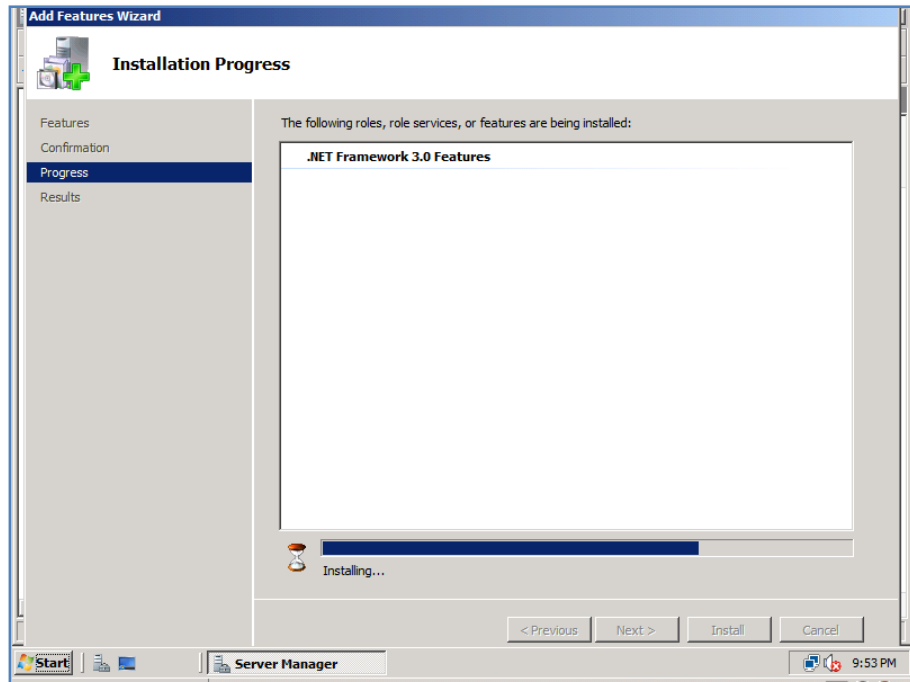
Once selected, like shown above, press the **Next** button to continue.



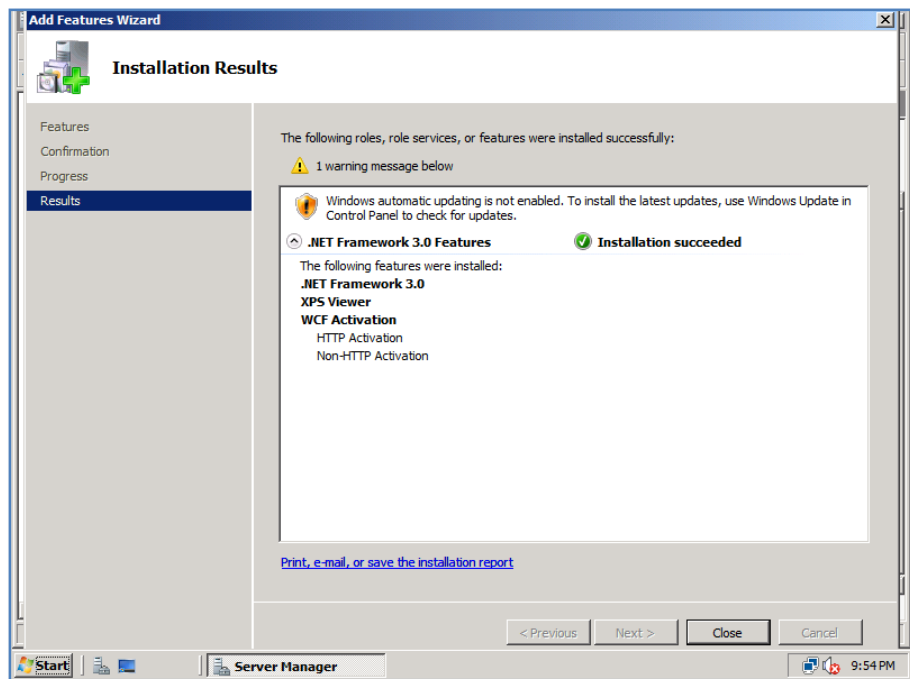
You will be presented with a summary screen showing what will be installed.

Select the **Install** button to continue.

## Chapter 14 – Installing Prerequisites



The wizard will now install and configure the appropriate features.



When the process is complete you will receive a summary screen as shown above. If the installation succeeded you can press the **Close** button to complete the process.

## Chapter 14 – Installing Prerequisites

---

It is strongly recommended that you now complete a Windows Update of the server to ensure that all the components are updated to the latest versions.

The Windows 2008 Server is now ready for WSS v3 to be installed via the standard setup.

### **14.8 Conclusion**

This guide continues to be a work in progress and I encourage comments and feedback of any type. The only way that the Guide will improve if these is continued feedback.

Please send your comments and feedback to [director@ciaops.com](mailto:director@ciaops.com).