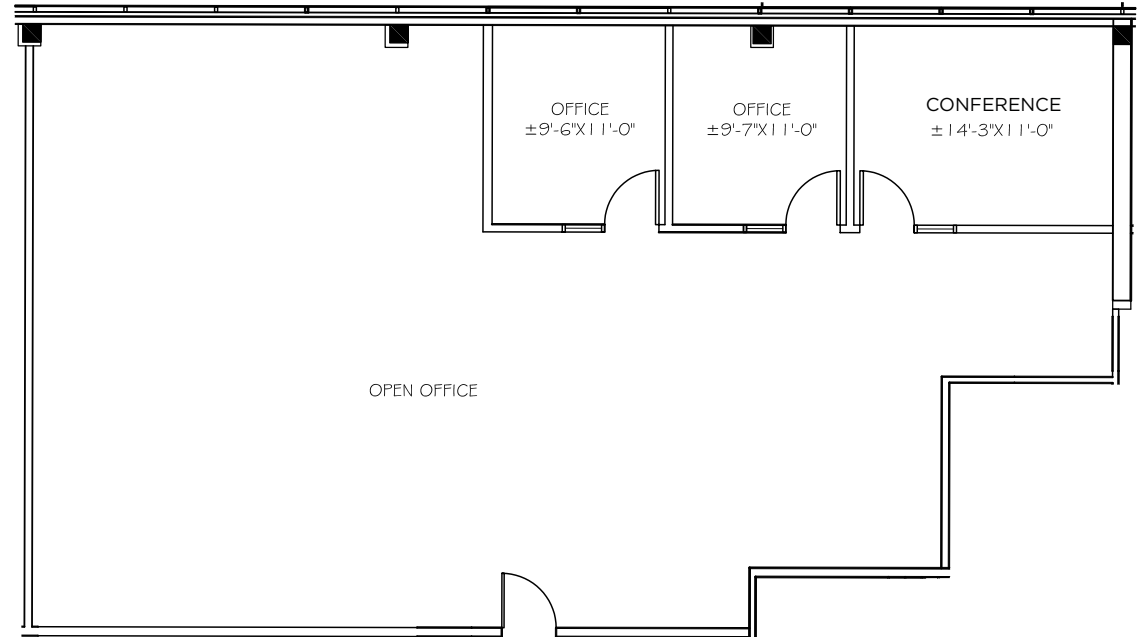
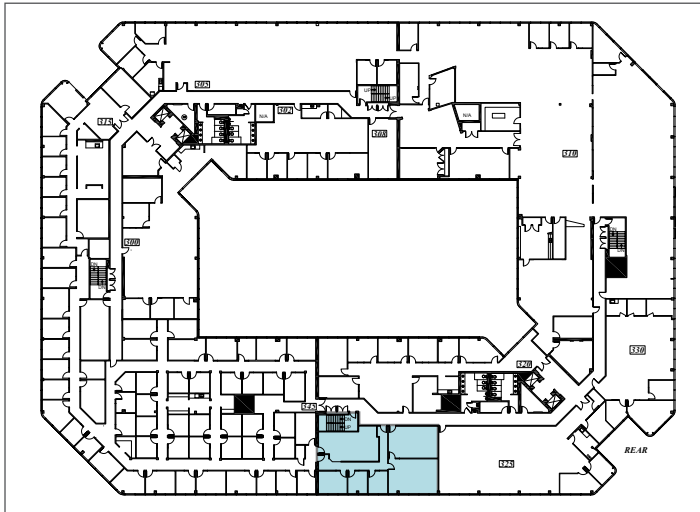


## FLOOR PLANS

Suite 345 ±2,142 SF

Brand New Spec Suite, 2 Private Offices &  
Conference Room



[\[RETURN TO AVAILABILITIES\]](#)

**Ben Paul**  
Executive Managing Director  
+1 650 401 2123  
ben.paul@cushwake.com  
LIC #01210872

**Pat Yaeger**  
Vice President  
+1 650 401 2133  
pat.yaeger@cushwake.com  
LIC #01452294

**Mike Moran**  
Managing Principal  
+1 650 401 2121  
mike.moran@cushwake.com  
LIC #00901003

1350 Bayshore Hwy., Suite 900  
Burlingame, CA  
main +1 650 347 3700  
fax +1 650 347 4307  
[cushmanwakefield.com](http://cushmanwakefield.com)

