

NSW SQUASH LIMITED 2014 - 2015 ANNUAL REPORT



NSW Squash Limited
ABN 52 992 519 238
Office: Sports House
Quad 1 Level 2 8 Parkview Drive
Sydney Olympic Park NSW 2127

PO Box 211
Thornleigh NSW 2120
Telephone: 02 8116 9713
Email: admin@nswsquash.com.au
Website: www.nswsquash.com.au

TABLE OF CONTENTS

LIFE MEMBERS.....	3
NSW SQUASH LTD ORGANISATIONAL STRUCTURE.....	4
NSW SQUASH LTD ORGANISATIONAL CHART.....	5
DIRECTOR PORTFOLIOS	6-7
BOARD OF DIRECTORS APPOINTMENTS	8
MISSION, VISION, VALUES, STRATEGIC DIRECTION.....	9
PRESIDENTS REPORT.....	10-11
FINANCIAL OVERVIEW.....	11
MARKETING REPORT.....	12-13
COACHING and DEVELOPMENT REPORT.....	14-18
MATRIX REPORT.....	19
THORNLEIGH SQUASH CENTRE REPORT.....	20-21
REFEREES REPORT.....	22
PENNANT ADMINISTRATOR REPORT	23
COMPETITION DIVISION COMMITTEE	24-25
SYDNEY JUNIOR PENNANT REPORT.....	25
FINANCIAL STATEMENTS.....	1-29

LIFE MEMBERS

Present

- Mr John Amer
- Mr Ted Barlow
- Mr Dick Best
- Mr John T Cameron
- Mr Dick Carter
- Mr Graham Corderoy
- Mrs Sue Donovan
- Mr Bob Dubois
- Mrs Beverly Gould
- Mrs Helen Hall
- Miss Claire Hands
- Mr Ken Hiscoe
- Mrs Kay Mansfield
- Mr Greg Middleton
- Mrs Dawn Moggach
- Mr Bill Mudford
- Mr John Picone
- Mrs Merle Pym
- Mr Peter Saxby
- Mrs Terry Spiers

Deceased

- Mr John Clerk
- Mrs Kathy Parkins

NSW SQUASH LIMITED ORGANISATIONAL STRUCTURE

AS AT 30 JUNE 2015

PATRON

Mrs Heather McKay AM, MBE

BOARD OF DIRECTORS

Dawn Moggach (President)
Chris Barnes (Vice President)
Scott Johnson
Jason McLauchlan
Jeff O'Donnell
Peter Saxby
Tim Toohey
Tim Wyres

COMPANY SECRETARY

Dawn Moggach

CHIEF EXECUTIVE OFFICER

Garry Somerville

PENNANT ADMINISTRATION

Jo Keegan (Pennant Administrator)
Anne Gleeson (Sydney Junior Pennant Co-ordinator)

FINANCE

Jeff Pails (Honorary Treasurer)
Susie Perenara (Book Keeper)

COMPETITIONS DIVISION COMMITTEE

Pennant Committee	Scott Johnson (Chair)
District Delegates	Carlos Franco (South/East) Peter Pears (West) Vacant (North)
Major Grade Delegates	Jason McLauchlan Sarah Nelson
Referees Delegate	Dawn Moggach
Tribunal Commissioner	Melanie Faithful (Chair)
Tribunal Committee	John Dillon

PLAYER DIVISION COMMITTEE

Peter Saxby (Chair)
Jason McLauchlan
Tim Wyres

SQUASH AUSTRALIA ROLES

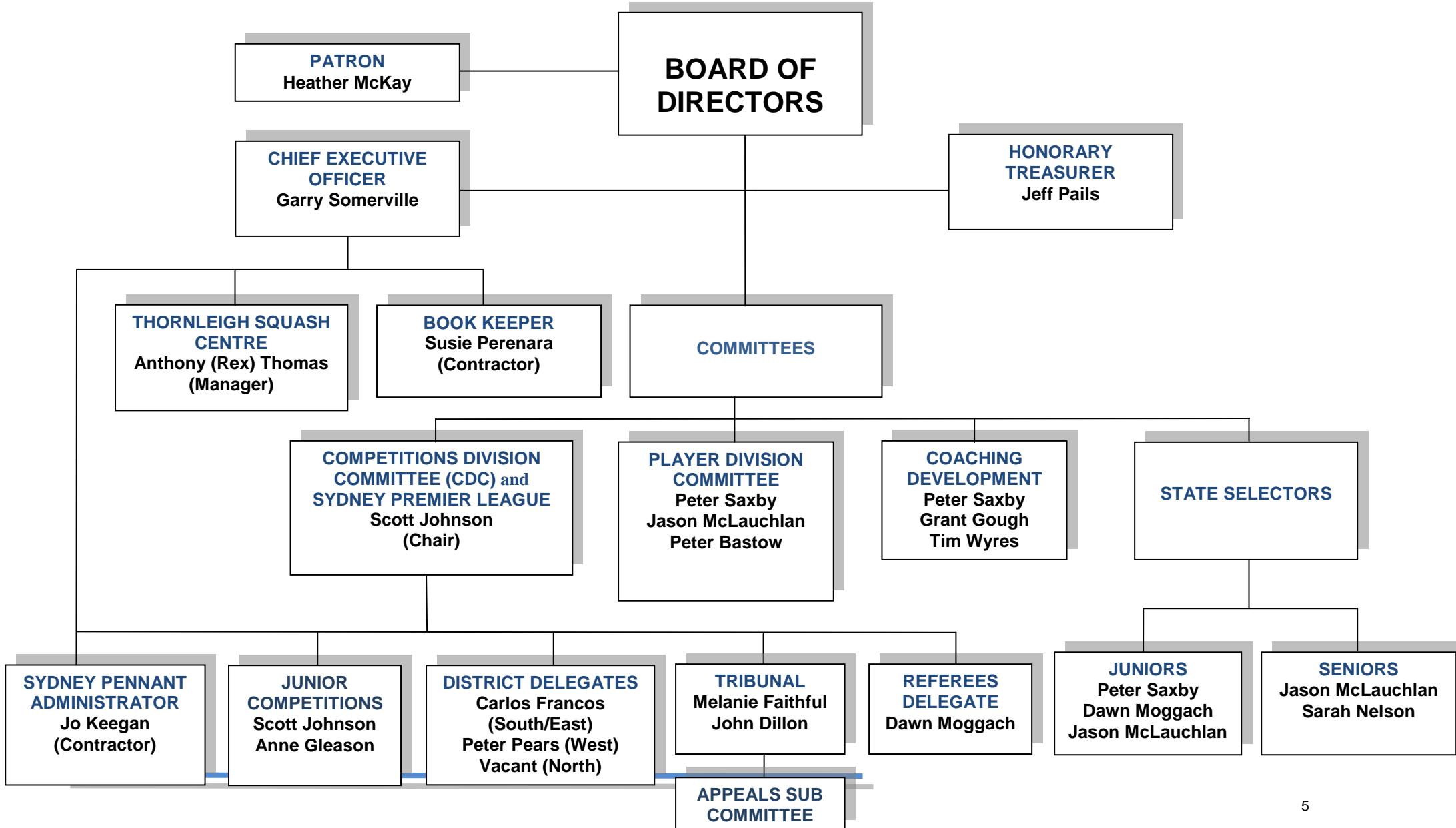
President's Council	Dawn Moggach
Executive Officer Council	Garry Somerville
Squash Development Council	Peter Saxby

AUDITOR

Gruber Beckett Pty Limited

NSW SQUASH LIMITED ORGANISATIONAL CHART

June 2015



DIRECTOR PORTFOLIOS

The name and portfolios of the Directors in office at the date of this report:

Dawn Moggach

Elected 20 November 2013

- President
- Referees Delegate



Chris Barnes

Elected 20 November 2013

- Vice President
- Legal Officer

(Photo not available)

Peter Saxby

Elected 19 November 2014

- Development
- Coaching



Jeff O'Donnell

Appointed 19 November 2014

- Thornleigh Centre
- Joint Ventures



DIRECTOR PORTFOLIOS

Jason McLauchlan

Elected 19 November 2014

- Events and Tournaments
- Join Ventures
- State Selector



Scott Johnson

Appointed 19 November 2014

- Marketing
- Communication
- Competition Development Committee
- Premier League



Tim Wyres

Elected 20 November 2013

- Facilities
- Development
- Coaching



Tim Toohey

Elected 19 November 2014

- Matrix System
- Affiliation
- Project Management



BOARD OF DIRECTORS

The NSW Squash Board comprises of no more than eight (8) Directors being:

- Six (6) Elected Directors elected under rule 21 of the Constitution
- Up to two (2) Appointed Directors appointed under rule 22 of the Constitution.

Elected and Appointed Directors term of office is for two (2) years under the Constitution.

NAME	POSITION	ELECTED / APPOINTED	DATE APPOINTED
Dawn Moggach	President	Elected	20 November 2013
Chris Barnes	Vice President	Elected	20 November 2013
Jason McLauchlan	Director	Elected	19 November 2014
Peter Saxby	Director	Elected	19 November 2014
Tim Wyres	Director	Elected	20 November 2013
Tim Toohey	Director	Elected	19 November 2014
Scott Johnson	Director	Appointed	19 November 2014
Jeff O'Donnell	Director	Appointed	19 November 2014

MISSION STATEMENT

To promote, develop and increase active participation in squash at all levels and for all ages in the sport in NSW.

VISION

NSW Squash's Vision is for a vital and growing sport in NSW, supported by financially successful squash centres, and the recognition nationally for outstanding player and coach development.

This vision encompasses the following strategic themes:

- Support of members and their local communities to attract new players and retain active players
- Represent centres in the promotion of the game to Government and other peak Sporting Organisations
- Represent the sport and its promotion to the Public, Media and the Corporate sector
- Promote and administer competitions in NSW
- Be the centre of excellence in developing elite junior players, senior elite players and world class events
- Advise members on technical developments of squash to coaches, players and referees

VALUES

In our relationship and dealings with our stakeholders and each other, we will be:

- Collaborative - bringing everyone together
- Bold - ambitious, creating the future
- Innovative - embracing change
- Clear - communicating effectively
- Ethical - ensuring a level playing field

STRATEGIC DIRECTION

Over the next three (3) years, NSW Squash will focus its resources on the following Strategic Objectives:

- Improve Board and Committee governance, policies and practices
- Improve the management and conduct of competitions
- Identify and develop junior players for the future success of the sport
- Attract and develop senior players
- Attract and develop coaches and referees
- Continue to upgrade NSW Squash's Thornleigh Squash facility as the opportunity arises to the highest possible standard

PRESIDENT REPORT

2014-2015 has been a year of consolidation for NSW Squash, building on the good things that happened in the previous 12 months.

In April 2015, the NSW Squash office was moved to new premises at Quad 1 Level 2 8 Parkview Drive Sydney Olympic Park with more modern amenities and our hard working CEO has his own office.

Our participation numbers have increased over the past 12 months. This is due to a concerted effort to increase more participants in our programs and services, and that some member clubs are using the matrix to formalise their in-house competitions, which I would like to encourage more clubs to use. We welcome the in-house and social player to the family.

Our junior programs have gone from strength to strength through the hard work being done by our Development Manager Peter Saxby. Peter, also a Board Member does all this in a voluntary capacity for which we all thank him very much. Peter travels 6 hours to Board meetings and then 6 hours back, and yes, we do occasionally get him on the phone! Our junior tournaments have been spread more evenly over all NSW regions. (See the Country report) We have conducted coaching sessions in many centres, with the longest trip undertaken by our Assistant Junior Team Coach Scott Butcher to Leeton. This was very well received by the very enthusiastic junior players. The new Sporting Schools program will be rolled out across NSW in the next 12 months and we have some very enthusiastic people waiting to begin this exciting program. Our Saturday morning junior pennant in Sydney now has over 200 players participating. These players mainly come from local private schools in the North Western area of Sydney but we are gradually encouraging other clubs to join like Willoughby and Elanora. Thank you to all the teachers/coordinators/parents for driving the players around each Saturday morning.

The loss of centres is a continuing worry to all. The Board is in talks with local area Councils to get squash courts included in any new multi sports centres they may be planning. It is a priority for all States and Territories to stop the decline in facilities. We are not the only State facing this problem.

Our affiliated centres remained at 72 for 2014-15. We have introduced a 'discounted' package for clubs to include their in-house competitions on to the matrix. This has meant some 700 players added to the matrix. The Sports Commission is seeking player participation numbers from all sports, including squash. Squash Australia is pushing States and Territories to register 'ALL' players. How do we capture all the social players? Those players who just walk in off the street and book a court for 30 minutes are not interested in registering their names with anyone. It is an open ended problem we are all facing.

Our Honorary Treasurer Jeff Pails continues to give his time to NSW Squash looking after our finances, which we are greatly appreciative.

The re-accreditation of our coaches has begun under the stewardship of Peter Saxby and Grant Gough. Hopefully we can meet the expectations of Squash Australia during this next 12 months in getting our coaches up to date.

Our NSW Squash Blue Tongues did us proud in Perth at the Australian Junior Championships. It was a long trip for some of our "first" time team members but a great learning experience for the future.

2014 was a great year for Laura Moloney from Coutts Crossing, who was seeded 2 in the U13 Girls and went on to win the Championship. Laura then went on to be crowned the 2014 Squash Australia Junior Female Athlete of the Year. Congratulations Laura, you did yourself and NSW Squash proud. We wish you well for your very bright future in squash.

The NSW Open Championships were once again held at Thornleigh Squash Centre. We had a full draw for the PSA events and 120 entries in the graded event. Thank you to our sponsors and also thank you Jason McLauchlan for running the graded event, which he does with minimal paperwork!

No sporting organisation can exist without its volunteers. The Board thanks you for all the time and effort you give to our sport. Our referees are slowly increasing in number. They all work in voluntary roles for which we thank them.

To my fellow Board members, thank you for your support and help. We are very much a working board and you all have done your part extremely well.

Dawn Moggach
President

FINANCE REPORT

During the last financial year total squash and grant income increased slightly. Junior income was stable and pennant income declined slightly.

Accumulated surplus has also increased as shown in the balance sheet as at 30 June 2015.

Thornleigh operations continued to be maintained separately from NSW Squash Limited. Thornleigh Squash operations were through the wholly owned subsidiary company Australian Squash Management Pty Limited. The directors of that separate company are Dawn Moggach and Christopher Barnes.

Thornleigh Squash Centre increased turnover by \$60,000 but still finding trading extremely difficult as shown by the financial statements, which show a loss for the year of \$19,940. It was necessary to provide an additional \$4,889 during the year to cover part of the operating losses of the Centre for the June 2015 year.

In summarising our financial position, it should be noted that NSW Squash has sufficient cash reserves from its bankers to meet the day to day operating costs. The balance sheet reflects this scenario as all major liabilities are owing to the ANZ Bank Limited.

Jeffrey Pails
Honorary Treasurer

MARKETING REPORT

This has been a year where the marketing focus has been building on the digital communication foundations from the past 2 years and to continue to address the legacy financial challenges from within the current business. This year has seen significant growth in the promotion of events, centres and player achievements and has seen most centres improve their communication with the squash community, leveraging our website and Facebook assets.

The marketing strategy this year has focused on:

- enhancing two way communication between the organization of NSW Squash, its members and players;
- improving our product offering to increase participation and improve financial returns;
- providing tools and education to centres to improve local promotion and player engagement.

Enhancing Communication

The NSW Squash website remains the central source of news, coaching resources, regulations, rankings and the squash calendar. It is supplied by Squash Australia but needs to be maintained by the local association. It is great to see the number of event posters and entry forms that now regularly flow to squash administration to be posted on this central resource. Two key initiatives this year in regards to the website have been:

- populating the full calendar online to facilitate player planning of tournaments, training and to access entry forms and in some cases draws and results;
- improving the coaching resources with the partnership with squashskills.com

Online Coaching Tools

Squashskills.com is the most comprehensive online squash coaching resource on the market. NSW Squash has partnered with squashskills.com to bring you their beginners module. This is a great place for any new player or player needing a refresher on the basics of the game to start. All content is presented as streaming video so you can watch them over and over again.

The Beginners Guide to Squash

Squashskills and New South Wales have teamed up to get more people playing squash. This free beginner module will give you all of the knowledge that you need to arrive on court one step ahead of your opponents.

Learn the rules, grip, and correct technique - all for **free**, today!

Share this link with your friends - and help them understand more about the best game on the planet!

[ENTER THE BEGINNER MODULE](#) Share this on:   



The Facebook group continues to grow in usage by NSW Squash members, players and promoters as the most up to date source of information. This has become a convenient and fast place to enter events, squash articles and information, or to voice concerns. Increasingly this is where centres and promoters share photos and now videos from events. The NSW Squash Group now exceeds 1,200 members.

Product Development

The product or services offered by NSW Squash continue to evolve attempting to meet the needs of both our members and funding sources.

The NSW Premier League has been a major innovation providing centres a product to market to attract new and lapsed players to their centre by showcasing our elite players in an event format. This has also had the additional benefit of reconnecting with some of our great players who have not been actively participating in major grades for some time. Two seasons have been completed and the format continues to evolve based on the feedback from centres, sponsors and players.

A new trial program has commenced whereby centres are incentivised to add players to the matrix. Participation numbers are key for our ongoing funding from various Government bodies. The trial program allows members to cost effectively use the matrix for a range of internal competition formats. This allows us to capture participation numbers of regular players that do not play Sydney Pennant or NSW Squash sanctioned tournaments.

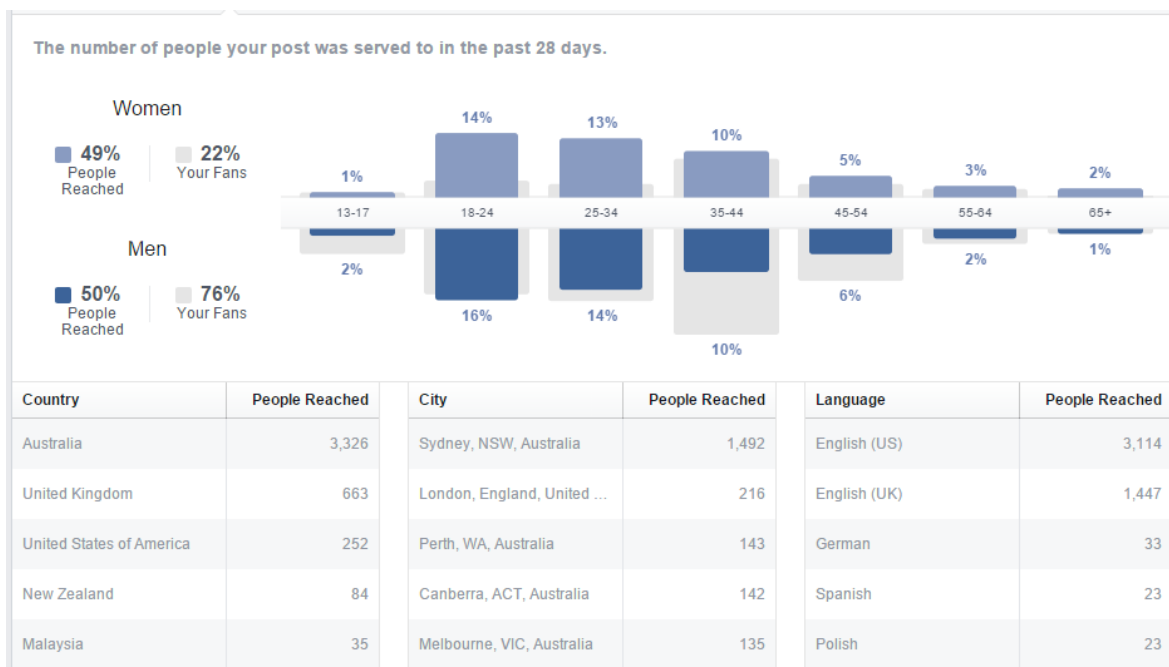
The member benefits program continues to evolve with new offers from Squashskills.com. Although still small in its current scale, this allows players to get reduced prices on accommodation, squashskills.com and beverages while additionally providing new revenue streams to NSW Squash. A framework is now in place to facilitate seeking additional value for members and players in new categories that will look to further leverage new Squash Australia partner relationships.

Promoting member events now happens in 4 areas; via the online squash calendar, NSW Squash website, Facebook and now Instagram. New information including event posters and entry forms, courts for sale etc is generally distributed online within 2 days of receipt. Follow-up and summary news articles or posts are additionally created for the website and Facebook to further promote events and key information.

Next Year

Looking forward into next year I will be looking to expand and leverage the trials in place in terms of Premier League and Internal competitions. I am looking at how to facilitate greater promotion of our affiliated associations. Junior promotion/fund raising needs to be addressed this year as the affordability for families is declining with reduced number of junior able to travel or bearing large costs to “represent” NSW. I look forward to the coming year and continuing to build on the momentum that has been achieved over the past 3 years.

Scott Johnson
 Director
 Marketing



DEVELOPMENT and REGIONAL REPORT

Performance Pathways Program

The NSW Academy Program has gathered strength during the past 12 months through diversification and increased participation numbers. A total of 8 Academy camps have been conducted during the period with 88 juniors taking part at regional and metropolitan camps.

This year the Pathways Program has been expanded with Academy camps conducted in four country regions and several camps at our home of Squash, Thornleigh. Extending the program to Country Regions has helped in promoting the game and activities within those regions and reduced the expenses to families for accommodation and travel to the metropolitan district.

However, future Academy camps need to be promoted better within Regions setting out the opportunities and benefits of programs available to athletes.

With a greater number of players joining the Pathways Program, NSW Squash Junior Development Program was successful in acquiring Squash Australia's Underpinning Grant for 2014/15. This enabled a greater understanding and involvement in the Pathway Programs, which allowed for NSW junior players being successful in selection for the National Travelling Squads and representative teams.

Junior representative selection criteria are a key element of the Pathways Program for anyone seeking State representation and are available on the NSW website.

Regional Services

The first Development Clinic in the Riverina Region took place this year at Leeton. Under the guidance of Scott Butcher, Assistant State Junior Coach 14 juniors took part in the two day clinic at Leeton Squash Centre. The kids enjoyed the two days of activities with prizes awarded on the final day.

In the South East Region, Dapto Squash Centre was host for an Academy camp in May and conducted their first Silver Ranking Tournament for juniors on 30-31 May. A special thank you to Tony Bullman for his assistance with the junior programs and promoting the events in the Illawarra Region.

Schools Program

The Active After Schools Program (Sport and Recreation) was wound up in December 2014. This was to make way for the introduction of the Sporting Schools Program by the Australian Sports Commission to be introduced from 1 July 2015. NSW Squash Centres had been instrumental in leading the Active After Schools Service on a State basis and had 14 active centres taking part to deliver the program to thousands of juniors.

The new Sporting Schools Program enables schools to access grants to pay for equipment and coaches to deliver a sports program (32 sports approved for inclusion in Sporting Schools Program) whether it be during school hours or after hours.

Schools and Squash Coaches need to register to take part in the Government funded service.

Tournaments

The NSW Tournament Calendar continues to advertise sanctioned events, which form part of the Squash Australia Tour. Currently NSW has 21 junior events, which provide categorised ranking points for use in determining State and National Rankings. The Senior Circuit is over populated with events at more than one per week. NSW Squash will explore opportunities to promote better tournament events as part of the NSW Calendar for 2016.

Squash Australia is proceeding with IT systems to gather player data for use such as national rankings but until a satisfactory system is in place, NSW Squash will continue to use its own State Rankings system for State selections.

Details are available on the NSW Squash website for:

Australian Junior Open – Platinum - Geelong Victoria

Under 11 Girls Sydney Johnson - First

Under 13 Girls - Laura Moloney – Second

Under 15 Girls - Vanessa Graham – First

Under 19 Girls – Tiana Saxby - Second

Australian Age Championships – Platinum - Perth Western Australia

The Australia Age Championships were conducted in Perth in 2014.

In the Individual Championships, congratulations to Laura Moloney U/13 Girls Champion.

NSW finished second to Queensland in the Teams event.

The NSW State Team performed strongly under the guidance of State Coaches, Adam Schreiber and Scott Butcher.

NSW Age Championships – Gold - Coffs Harbour NSW

Under 11 Boys - Tom Lacy First

Under 11 Girls - Jemma Besant - First

Under 13 Boys – Haani Quershi – First

Under 13 Girls – Laura Moloney - First

Under 15 Boys – Jamie Patterson TAS – First

Under 15 Girls – Grace Patterson TAS - First

Under 17 Boys – Todd Riches – First

Under 17 Girls – Vanessa Graham - First

Under 19 Boys – Jesse Keegan – First

Under 19 Girls – Rachael Gibson - First

NSW Country Championships – Silver – Dubbo NSW

Under 13 Boys – Elliot Inman	Under 13 Girls – Georgie Lane - First
Under 15 Boys – Ryan Bushell-Keegan	Under 15 Girls – Claire Flannery- Livingstone - First
Under 17 Boys – Ryan Marshall	Under 17 Girls – Georgia Moore - First
Under 19 Boys – Jesse Keegan	Under 19 Girls – Tiana Saxby - First

NSW Academy – Pathways Program

The Academy Program was conducted in Hunter, Western, South East and Northern Regions during 2014/15.

Numbers ranged from 16 to 33 participants at each camp and opened up opportunities for a number of local players to become involved in State Programs. The camps were attended by Adam Schreiber, State Head Coach who spent time on skills development with all players and giving them challenges to work on when back at their own centre.

Adam has been assisted by the 2015 coaching panel and NSW Squash wishes to thank Scott Butcher, Heidi Mather, Brett Hyland and Roy Ollier for their assistance in delivering the Pathways Program.

NSW Travelling Squads – Australian Development Teams

A number of players were selected in Squash Australia Development Squads to compete against countries in the Asia and Oceania Regions. Congratulations to Jesse Keegan, Jacob Ford, Rachael Gibson, Tiana Saxby, Shehana Vithana and Laura Moloney on their selections during the year.

NSW State Calendar

Sanctioned NSW Junior Tournaments were conducted in a number of Regions this year, primarily to bring focus of our sport to Regional areas.

Silver Ranking Tournaments were held in Cardiff Hunter Region, Dubbo Western Region, Coffs Harbour North Coast Region and Willoughby Sydney Region. In meeting the State selection criteria juniors must compete in two Silver events and enables players to take advantage of match ups to determine state rankings.

The continued growth in senior tournaments conducted in the State offers players ample opportunity to find an event nearby, especially in the Sydney. This is impacting on graded numbers in country events with a decline in Sydney players taking part and a marked downturn in player numbers generally in country events.

Events sanctioned by NSW Squash for publication on the Annual Squash Calendar must be reviewed for 2016 with better use of promotional materials and media services to assist our game.

Facilities

The number of centres operating in country regions continues to decline with some closures and more conversions for better utilisation of space by owner/developers. The following

centres were impacted, Urunga loss 1 court with Bellingen 2 courts, Big River 8 courts, Tolland 4 courts are closed. Cardiff Squash Centre is planned for major renovation to an 8 court centre.

Coaching Services

The Australian Sports Commissions move to align sports under the new “Winning Edge” structure has seen Squash Australia implement a new Squash Coaching Structure in 2014/15. Previously coaches were accredited as Level 1 or Level 2 NCAS for a period of 4 years. The new structure of Foundation Coach, Club Development Coach and Talent Development Coach is currently being activated and valid for a period of five years. Current active coaches can transition to the new structure at no cost and for those that accreditation has expired a fee \$30 applies.

NSW Squash is currently working through the register of coaches to inform them of the changes and opportunities to attend updating sessions and complete their transition to the new system. There are more than 90 coaches on record with many already making the switch.

NSW Squash has arranged coaching courses at Willoughby and Thornleigh for new members during the past twelve months. Squash Australia is providing improved online services for coach education including Forms, Community General Principles and Rules Exams all now available online and a pre-requisite to the practical coaching courses when conducted in this State.

Special acknowledgements

A special mention is made to the following people for their untiring support in delivering services and support during the year:

- Trevor Smith – National Development Manager – Squash Australia
- Scott Johnson - Media promotion of services and events NSW Squash
- Adam Schreiber – State Academy – Head Coach
- Tim Wyres – Coach Education Co-ordinator
- Grant Gough – Coach Education Co-ordinator and Assessor.

Peter Saxby
Director
Coaching and Development



Coach
Adam Schreiber
Assistant Coach
Scott Butcher
Manager
Donna Lane
Manager
Nicola Moloney



Front Row: Georgie Lane, Mitchell Black, Laura Moloney, Claire Flannery, Jacob Ford, Elliot Inman, Ethan Bird
Row 2: Gabrielle Lane, Tiana Saxby, Rachael Gibson, Kelly Moloney, Jacob Bird, Georgia Moore
Row 3: Todd Riches, Jesse Keegan, Patrick Hart, Rohan Toole, Dominique Ratcliff, Ryan Marshall, Shehana Vithana

MATRIX REPORT

One of NSW Squash's strategic goals is to increase the number of registered participants. Our main vehicle for the implementation of this goal is to promote the use of The Squash Matrix throughout as many clubs and at all levels of the sport of squash. The reasons for this include:

- Some funding via government grants is tied to participation numbers. By registering players on the Matrix, they are included for the purposes of determining the number of players.
- Increases the 'reach' of NSW Squash and their affiliated members by expanding the database of players. Dissemination of any information or marketing from NSW Squash is made easier because all registered participants have contact details recorded for them. As a bonus, the affiliated Club which uses the Squash Matrix also has a ready-made contact/distribution list.
- Allows standardised rankings within each Club, within each pennant competition, across competitions, and indeed across Australia for all players who have a current matrix ranking. All States and Territories have adopted the Squash Matrix to some degree.
- The Squash Matrix is a flexible scoring and recording system for management of participating clubs for in-house competitions.
- Brings participating clubs onto the national stage and enhances the feeling of 'connectedness' of squash clubs to each other across Australia.

Our progress towards achieving this goal over the last year has been:

- Encouraging use of the Squash Matrix for in-house competitions by reducing the price to \$300 per year. This covers the fees we pay to Squash Australia for use of the Squash Matrix in NSW. Currently 13 clubs are using the Squash Matrix for their in-house competitions and we are looking to expand this number significantly in the next year.
- Changing the Sydney Pennant By-Laws so that clubs who use the Squash Matrix for their in-house competitions are allowed to use any in-house registered player to substitute 4 times into their pennant teams at no extra cost. Previously, each extra player would incur a \$50 registration fee.
- Encouraging the affiliation of other NSW squash associations back under the NSW Squash umbrella represents the sport of squash in NSW as a more united front for the purposes of applying for government grants, and allows for wider promotion of any squash publicity. By encouraging these associations to take up use of the Squash Matrix we further this aim. In the last year, Illawarra Squash, Newcastle Squash and City Business Houses have affiliated with NSW Squash. The City Business Houses competition has signed on to use the Squash Matrix. NSW Masters are soon too affiliated as well.

The signs so far are positive for squash and we look forward to even greater things in the year ahead.

Tim Toohey
Director
Matrix

THORNLEIGH SQUASH CENTRE REPORT

Thornleigh Squash has continued its growth with increased member base and more activities being offered. As you will see squash is not a dying sport in the region. This is a reflection of the Thornleigh team's hard work and innovating new initiatives driving through the hurdles with a continued positive outlook.

We farewelled Bryan Knight an employee of Thornleigh for 7 years. We would like thank him for everything he has contributed to the club and wish him the best in his future travels.

Memberships

The membership system was created and launched February 2015. This has created an excellent stream of regular income whilst providing excellent value for money for customers. Being flexible with month by month contracts and time freezes any time, it has brought in 140 members to take up this option in the 5 months it has been active.

Signing up new members is the main focus points for the club now. This will ensure a continuous income for the club to help pay the fixed costs.

Programs and events

We have launched a number of new initiatives with regular monthly doubles, structured RR and timed events being very popular amongst the members.

Classes have become popular and regular bookings have increased since memberships were introduced.

The NSW Open went well in 2014 with \$5,000 worth of sponsorship given from Briars Foundation and the prospect of QBE coming on as a major sponsor for 2016.

Briars@Thornleigh Christmas party went extremely well with 44 people attending from the club. We met at Thornleigh Club and went to the Briars Club house in Concord for dinner. We then returned back to the club via a party bus to continue the festivities. We look to double these numbers for next year as it creates a greater sense of community in the club.

The Thornleigh Squash club working bee was the first of its kind in a long time. The club was in desperate need of some TLC, and the members did not disappoint. Money was raised from a fundraiser, which bought a club dishwasher, we painted all 9 courts, replaced light fittings in the men's and women's bathrooms,(donated light fittings and installation), along with many other jobs being completed to enhance the club's presentation.

Monday and Tuesday box competition has had an outstanding success rate, with a consistent 72 players in all 8 seasons we have held. We have moved the internal competition onto the matrix, which has been successful in generating interest from players.

Juniors

We now have 40 junior members with most of them playing in one of the seasons junior competitions. We have had tremendous results from Mitchell Black and Elliot Inman, both making the State team. We had 15 of our juniors compete in the NSW Junior State titles. The Junior State Titles saw some of the State's best talent come to gain the title of the State Age Champion. The event was run very well and on time. A big thank you to all those who made it happen.

Over the course of the next year we hope to have 70 junior members. This will be achieved through our new colour levels system that gives the children goals to work towards. We have had a great success and have now brought in wristbands to symbolise the level the children have attained.

Conclusion

Thornleigh is continuing to grow in casual players and a total of 140 members currently. We are aiming to increase to 200 members by the end of 2015-2016 financial year.

Our systems are continually improving to increase efficiency using the latest apps and technology to open more communications with our members.

Financially we are in a better position than the previous year with only a small amount of debt left to be paid. This will allow for increased rent to NSW Squash to ensure a better return on their investment.

Junior development is a primary focus with plans to gain new schools for next year using the Squash Australia "Sporting Schools program" as a tool to do this.

We endeavour to continue working towards our mission of "Making Squashies for Life" and lead Thornleigh into being the premier centre in NSW and Australia.

Rex Thomas
Manager Thornleigh Squash

REFEREE REPORT

NSW Squash Referees officiated at many tournaments in 2015, not only in NSW but all over Australia. Also, a local referee officiated not only in Australia but in the Oceania Region. Chris Sinclair, our WSF Assessor was seen in many venues around the world. It takes a lot of hard work to get to this level but on the way we do have some fun times. The 2015 NSW Open was used to assess some local referees by the visiting National referee John Small, the National Refereeing Manager.

We had 4 people do the examination paper, with one getting assessed through to Club Level. The other 3 are still attempting to gain accreditation and this will happen.

In 2016 Sydney will host the Australian Junior Championships (Individual and Teams). This will require a good number of referees. So we will be working hard to get some more people accredited. Please don't hesitate to contact me if you are interested in helping our junior players and remember, you get the best seat in the house.

I am informed that the e-learning portal is almost ready to be rolled out. This will mean people can do the paper and the 'practical' test all on line. Hopefully this will encourage more people to learn the rules of the game, all without leaving home.

We thank NSW Squash for their continued financial support and hopefully during the next 12 months we will have more names on our list of accredited referees.

Dawn Moggach
Referees Co-ordinator

PENNANT ADMINISTRATOR REPORT

2014 Spring Pennant saw the commencement of the new format for the Premier League Pennant. Eighteen of our top male players and six of our top female players were placed into six teams, which was matrix based. Each team had a sponsor who had provided team shirts. As all six teams played at the same venue on the same night host venues were generous in providing supper for the players and many spectators. This proved to be a very successful competition and still continues to be played under this format.

Spring Pennant

The 2014 Spring Pennant had a total of 1,752 pennant players with the North District having 597 players, South/East 307, West 306, East 241, South 183 and Major Grades 118 players.

Autumn Pennant

The 2015 Autumn Pennant has a total of 1735 pennant players with the North District having 618 players, West 286, South East 282, East 220, South 204 and Major Grades 125 players.

With fewer players again in the Autumn Pennant compared to those in the Spring Pennant resulted in divisions decreasing in the North, East and South East divisions. In the West District it was decided to convert back to an 8 key draw so that teams had a greater opportunity to be competitive in their respective grade hence there were only seven (7) divisions compared to that of ten (10) divisions in the Spring Pennant.

It was sad to see three clubs close their doors after many, many years of hosting squash matches at their centres. South Sydney Juniors Squash Club had to relocate to Mutch Park Squash Centre, University of NSW relocated to Matraville Squash and Hero's Hill relocated to ABC Milperra. The relocation saw a drop in numbers of players in all three clubs.

Junior Pennant

The Junior Pennant once again had an increase in numbers over the two pennants with the Summer Pennant having 200 players and the Winter Pennant having 240 players. Again there have been a few more juniors now filtering through to the senior pennant.

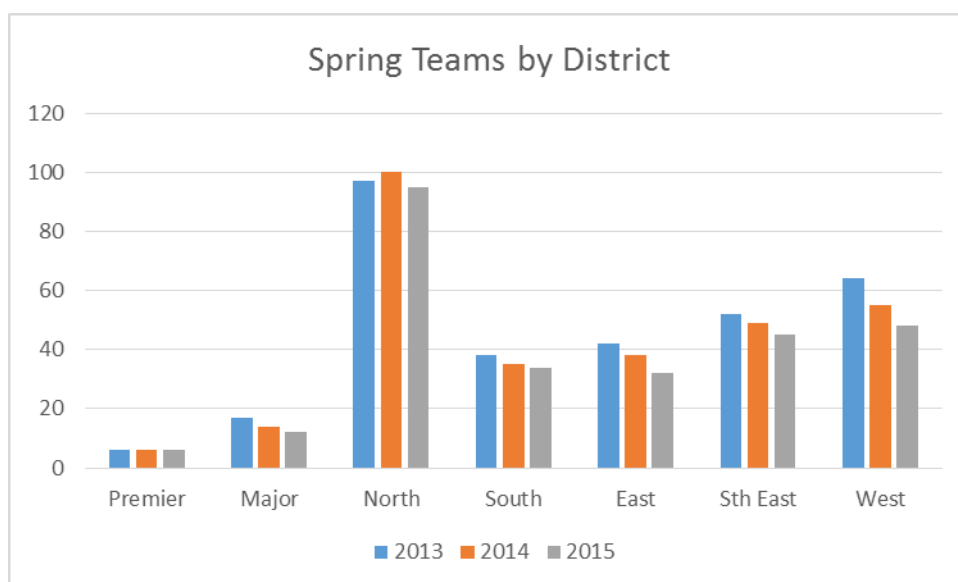
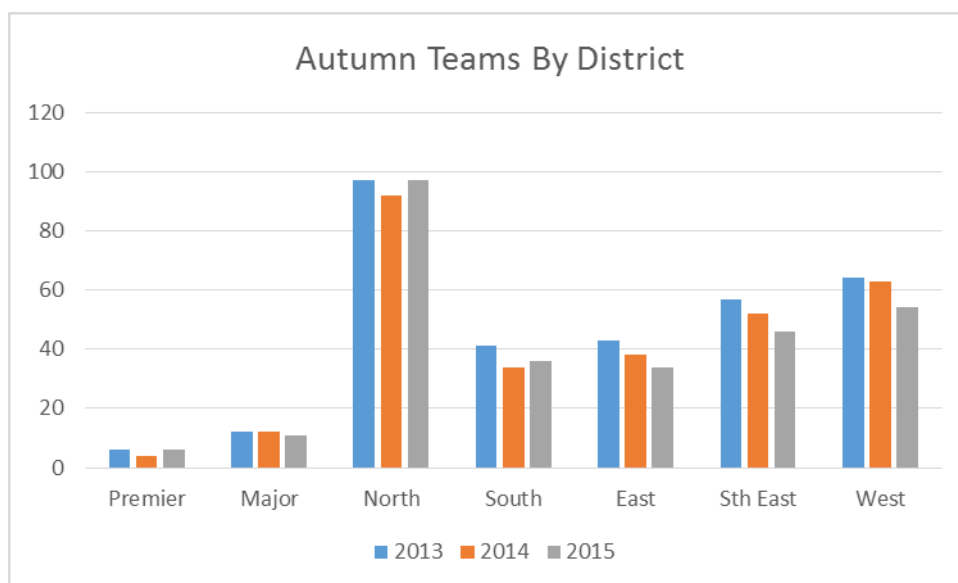
Jo Keegan
Pennant Administrator

COMPETITIONS DIVISION COMMITTEE REPORT

The Competition Division Committee (CDC) has continued to review the operation of the Sydney Pennant and operated several new trials to improve our products.

The changes made to the Sydney Pennant fees structure have been positive for NSW Squash and its member, reducing bad/late debts and providing increased flexibility for team registrations.

Declining numbers in both the Western & East districts remain a concern declining over 3 years by 20%. This is primarily due to a lack of facilities and new players.



Several new trials we undertaken this year including the NSW Premier League and the ability for major grades players to play in District grades. In all, these changes have been positive to the competition but remain under review and refinement. Scheduling remains one of the largest challenges from these initiatives and the cross over of players.

At this stage there is not a CDC delegate for the Northern District with the district primarily co-ordinated through consultation with Willoughby, Lane Cove and Thornleigh.

I would like to thank the efforts of the CDC members Jo Keegan (Pennant Administrator), Dawn Moggah (Referees), Carlos Franco (South/East) and Peter Pears (West).

Scott Johnson
Chairman CDC

SYDNEY JUNIOR PENNANT REPORT

The junior competition has two seasons per year, Summer from October to March and Winter from May to August.

Teams are made up from players from Knox Grammar, Barker College, Bodycourt, Thornleigh Squash and Willoughby Squash. This year we welcomed our first teams from Elanora Squash. The format is 3 player teams (boys and girls) playing on a home and away basis on Saturday mornings.

Participation from the schools and the introduction of the squash club teams are growing the competition. In the Spring competition we had 160 players growing to approximately 230 in Autumn. More teams are expected to join from the growing junior programs run out of Thornleigh and Willoughby. We are always keen for other schools and centres to join this competition.

The success of the junior pennant is the growing number of juniors participating and returning each season. We see distinct improvements across each season though all grades of the competition.

This year NSW Squash has provided additional online coaching support via the partnership with Squashskills.com. Additionally the Grand Final ("Gala Day") event is once again held at Thornleigh Squash allowing greater throughput of teams and BBQ facilities.

I would like to thank the centre managers, coaches, school teachers, school chaperones and parents that get our junior players to their training and Saturday pennant each week. A special thank you must go to our Junior Pennant Co-ordinator, Annie Gleason for her volunteer efforts and support of our junior players.

Scott Johnson
Director
Chairman CDC

Annie Gleason
Junior Pennant Co-ordinator

NSW SQUASH PROUDLY SUPPORTED BY



Supported by the



The Official Ball of Squash Australia



NSW Squash Office:

Sports House
Quad 1 Level 2
8 Parkview Drive
Sydney Olympic Park NSW 2127

PO Box 211
Thornleigh NSW 2120
Phone: 02 8736 1244
Email: admin@nswsquash.com.au
Website: www.nswsquash.com.au