

A VISION FOR OAKDALE LAKE



RAIL TRACK

COLUMBIA

GSAPP

HUDSON VALLEY
INITIATIVE

Friends of Oakdale Lake is working to rejuvenate Oakdale Park by partnering with, and promoting the ideas of, the Hudson community. Friends of Oakdale Lake aims to increase access to nature, improve the health of the lake, improve trail connectivity, and improve recreation infrastructure, strengthening opportunities for community activities, education, and enjoyment in Oakdale Park.

The Hudson Valley Initiative (HVI) at Columbia University's Graduate School of Architecture Planning and Preservation brought students and faculty to Oakdale Lake to lead community design workshops, develop design recommendations, and provide documentation that can be used to consult stakeholders, build strong community-oriented consensus, and raise consciousness.

The 8+1 Design Actions documented here can be used by Friends of Oakdale Lake and other stakeholders to secure funding and form partnerships for the redesign, buildout and renovation of Oakdale Lake.

HUDSON VALLEY INITIATIVE

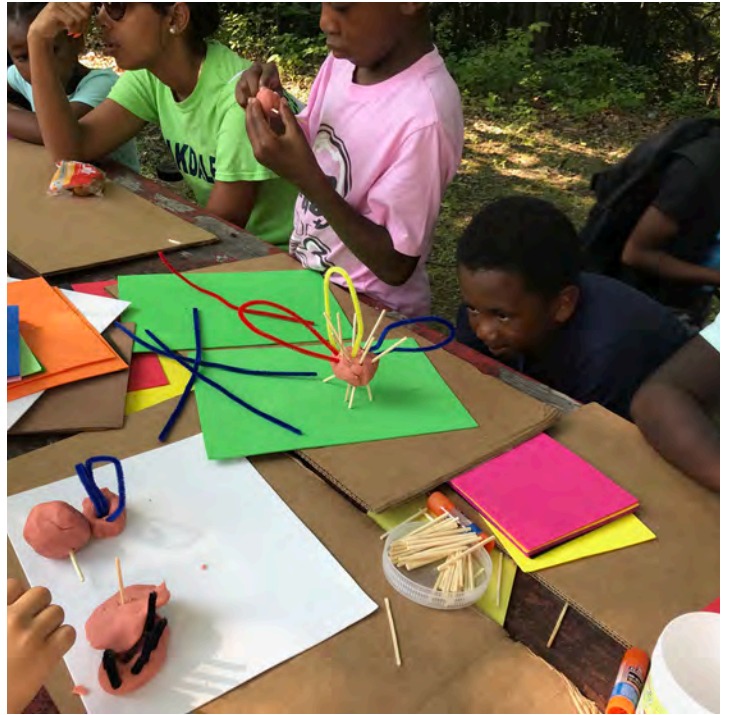
Fall 2018

Kaja Kühl, Director
Lorena Galvao, Research Assistant
Maria Palomares Samper, Research Assistant

Additional support during community workshops was provided by: Lee Altman, Alexandra Burkhardt, Richard Chou, Carolina Godhino, Devaki Handa, Sharvi Jain, Adi Laho, Keju Liu, Alaa Marrawi, David Mauricio, Noah Shaye, and Shou Yang.



AUGUST 2018
WORKSHOP WITH SUMMER CAMP







OCTOBER 2018
COMMUNITY WORKSHOP



REGIONAL CONTEXT AND ACCESS TO OAKDALE



To/From Bliss Towers

20 min
5 min

Future Empire State Trail
Proposed Route

To/From Youth Department

20 min
5 min

To/From JLE

8 min
3 min

propose
new entranc

prop
new entr

Hudson



Greenport

To/From High School

15 min
5 min

To/From Middle School

8 min

Fairview Ave

Glennwood Boulevard

Oakdale

proposed
improved access
from Spring Street

Former Albany Hudson
Electric Trolley ROW

Potential Future
Boston - Albany Trail

8+1 AREAS OF CONCERN

Roadside Bathing

- + North 6th St is very close to swimming area
- + Main pedestrian route between playground and beach is precarious



Fading Beauty

- + Defunct Volleyball & Wading Pool
- + No water access
- + Excess Phragmites at water edge
- + no direct access

Peeling Paint

- + Beach house is cluttered with storage uses
- + Bath rooms and changing area lack dignity
- + Concession caters to summer camp only and lacks space



Too Little Shade

- + Small pavilion provides only covered area and tables
- + Limited to summer camp use during camp hours





Sad Playground

- + Defunct and limited play equipment
- + Summer Camp is in need of covered Area
- + no bathrooms
- + no parking or bicycle parking



Murky Waters

- + Leaves and other debris create excess nutrients that feed algae bloom and sediment at lake bottom
- + Dumping and left over infrastructure (concrete and steel) create uncomfortable swimming conditions

Muddy Trails

- + Unsafe trail conditions
- + Garbage and homeless shelter in forest
- + Lack of Infrastructure



Summer is Too Short

- + Lifeguards are not on duty past 5pm or in most of August
- + Ice Skating and other year-round activities are discouraged/prohibited and lack infrastructure

Asphalt Desert

- + Between Parking, Basketball Courts and Skateboard Area approximately 80,000 sf of asphalt are largely underutilized, but produce a heat island effect
- + Skateboard Area is not usable due to coarse surface
- + Vehicle entrance causes dangerous conflicts with summer camp activities

8+1 DESIGN ACTIONS

8 DIVING BOARD

- + Long Deck for sunbathing
- + Toddler water play area
- + Plant buffer
- + Traffic Calming

7 PICNIC GROVE

- + New Entrance
- + BBQ and Picnic Tables
- + New Dock for swimming
- + "Date Nook" for quiet encounters, storytime

1 BEACH HOUSE & PLAZA


- + Renovated Beach House
- + ADA Access
- + Concessions Bar & Seating
- + New Lifeguard Station
- + Bicycle Parking & Repair

3 LUNCH POINT

- + New Pavilion
- + New Boat Ramp
- + Multi-purpose lawn

2 BOARDS, HOOPS & CARS

- + New Vehicle Entrance
- + New Multi-surface Area for Basketball, Skateboard
- + Improved Stormwater Drainage



+1 ICE SKATING

- + Equipment for skating
- + Warming Hut
- + Operate Beach house in winter

6 NATURE PLAYGROUND

- + Bathrooms and Storage
- + Canopy for Summer Camp
- + Bicycle Parking
- + "Islands" with Play Equipment
- + Additional Play Stations along trail

4 CLEAR WATERS

- + Enzyme Treatment
- + Aquatic plants on edges
- + Floating Gardens
- + Fountain/aeration system

5 FOREST CLASSROOM

- + Improved Access from Spring St
- + Improved Trail Condition
- + Small stations to play, observe, rest, learn
- + Fishing Infrastructure

OAKDALE SITE PLAN



PICNIC GROVE

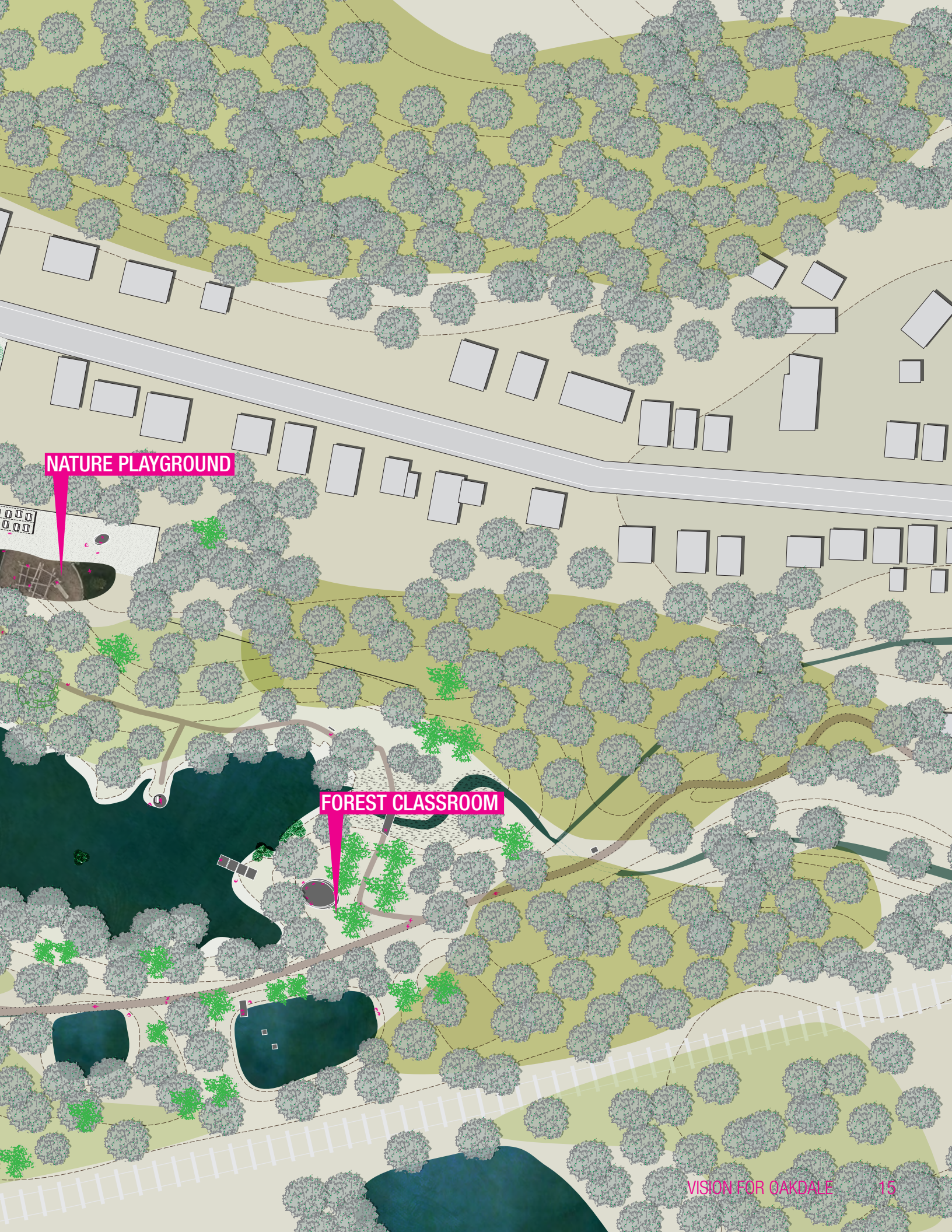
DIVING BOARD

BEACH HOUSE & PLAZA

LUNCH POINT

CLEAR WATERS

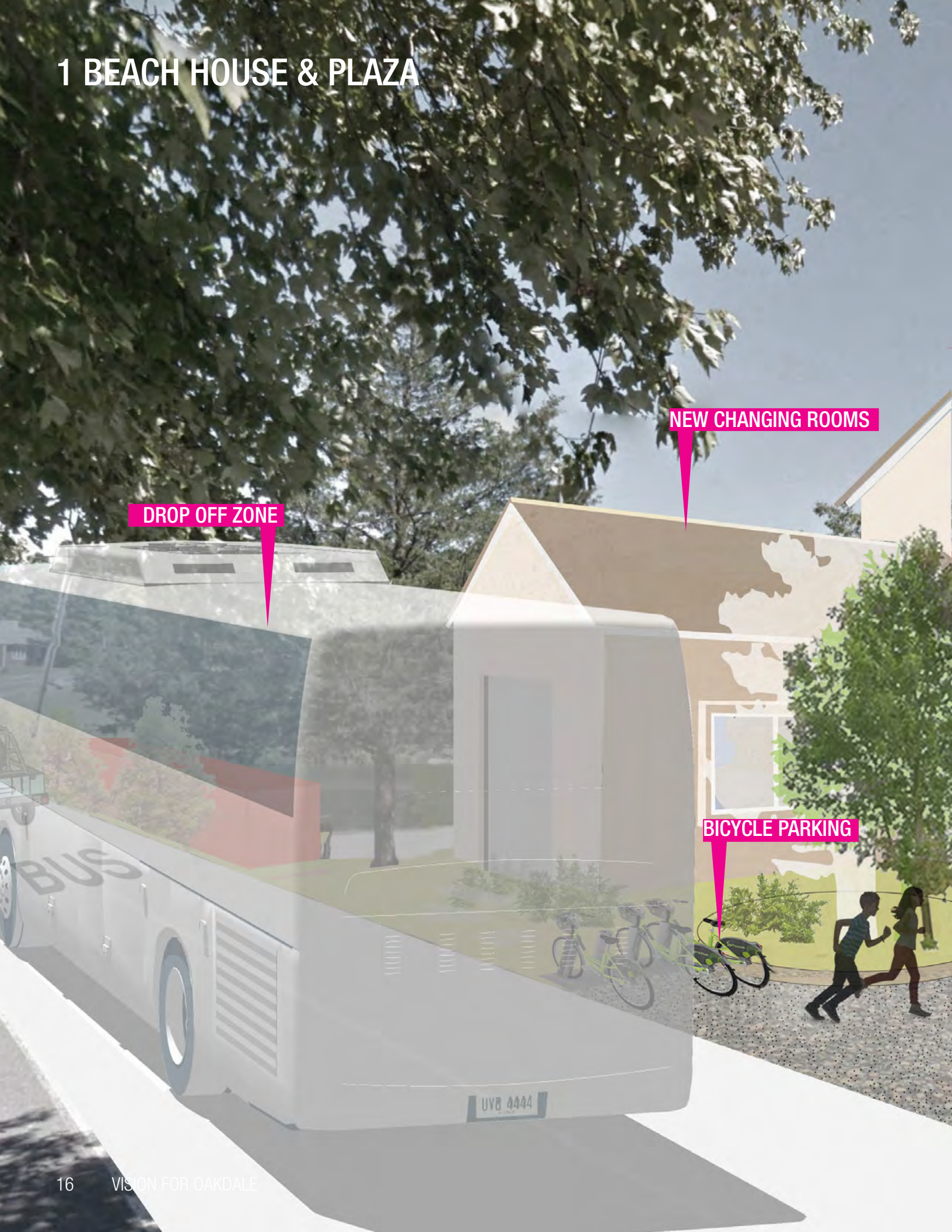
BOARDS, HOOPS & CARS



NATURE PLAYGROUND

FOREST CLASSROOM

1 BEACH HOUSE & PLAZA



DROP OFF ZONE

NEW CHANGING ROOMS

BICYCLE PARKING



OAKDALE LAKE

CONCESSIONS

SUMMER CAMP OFFICES

PICNIC TABLES

1 BEACH HOUSE & PLAZA

Vision:

The 1948 Beach House should be renovated and upgraded to improve bathrooms and locker rooms, provide space for a concessions kitchen, and provide ADA access to bathrooms and dining area. Extension and/or additional windows should be considered to provide optimal space for Youth Department offices and camp supervision.

To improve safety, the entrance should be closed to vehicles and limited to emergency only. Instead, a drop-off zone along North 6th Street allows for morning drop-off. The area in front of the beach house is open to bicycles, planted to provide shade and stormwater management and additional seating near the concessions kitchen. Facing the beach, an outdoor shower as well as seating provide additional amenities for summer camp participants and the general public. All lifeguard equipment (currently stored in the beach house) will be placed in a separate structure on the beach. Movable umbrellas add shade during the day on the beach.

Short Term Actions:

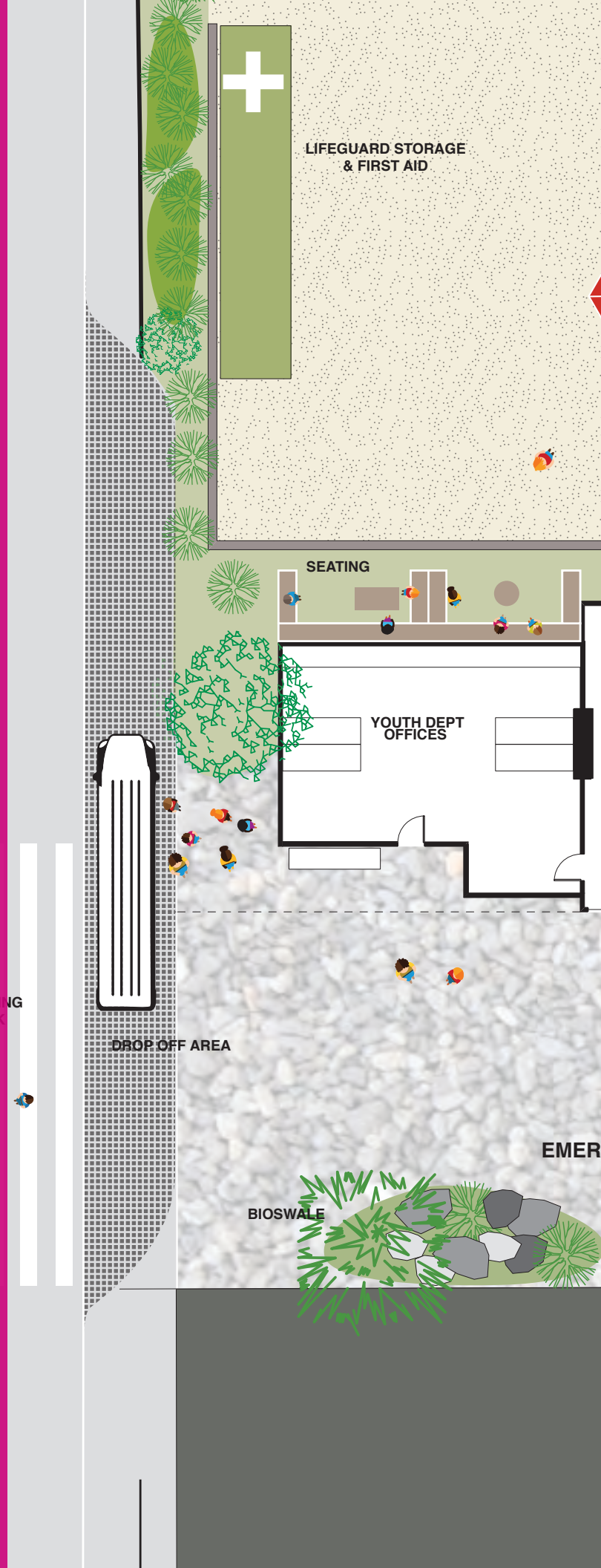
Remove / Relocate existing benches

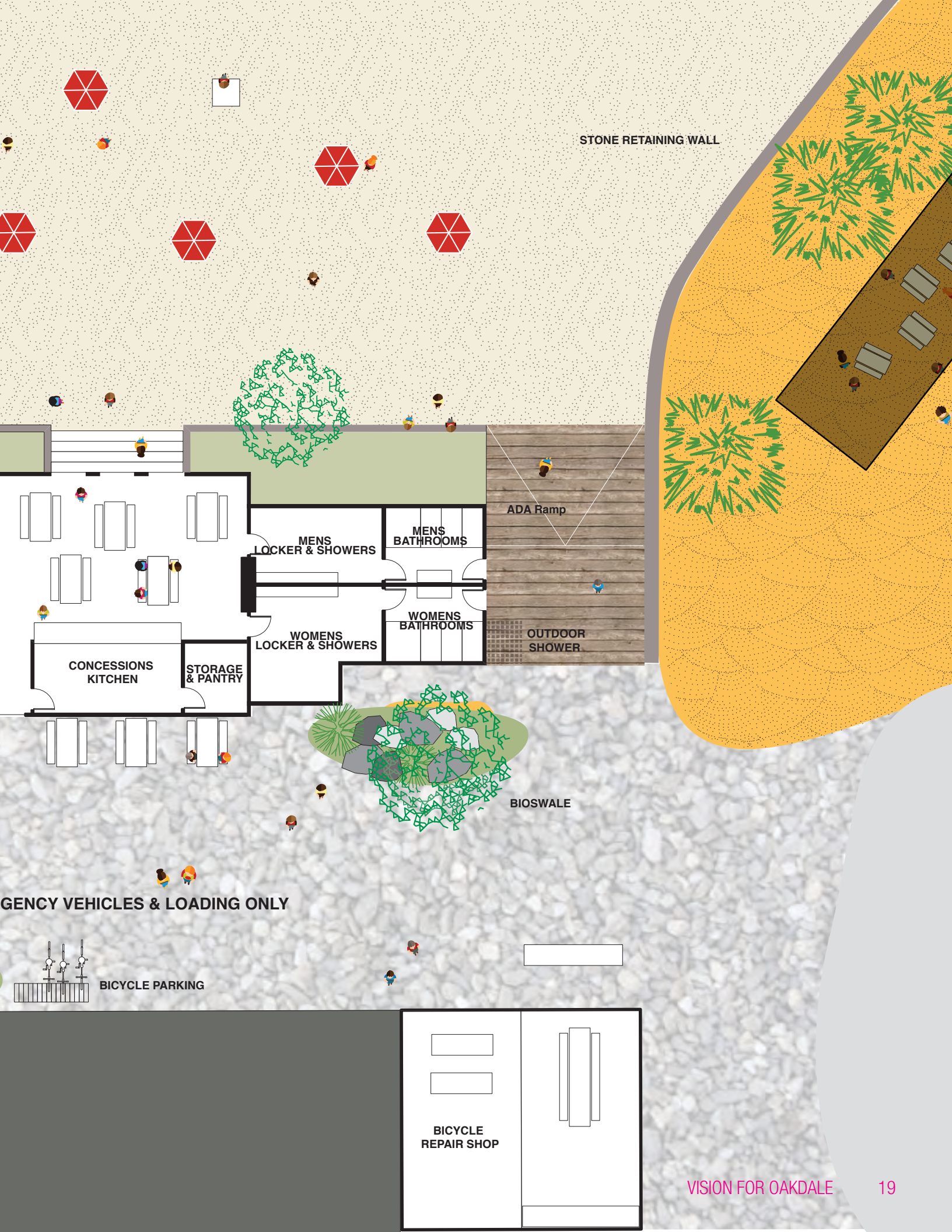
Add movable planters to slow traffic flow in front of beach house

Build seating alongside beach house on beach facing side to provide seating picnic space in the shade

Relocate lifeguard equipment to container storage outside beach house

Add movable umbrellas/tents for shade on the beach





STONE RETAINING WALL

ADA Ramp

MENS
LOCKER & SHOWERS

MENS
BATHROOMS

WOMENS
LOCKER & SHOWERS

WOMENS
BATHROOMS

OUTDOOR
SHOWER

CONCESSIONS
KITCHEN

STORAGE
& PANTRY

BIOSWALE

AGENCY VEHICLES & LOADING ONLY

BICYCLE PARKING

BICYCLE
REPAIR SHOP

2 BOARDS, HOOPS AND CARS

LUNCH POINT PAVILION

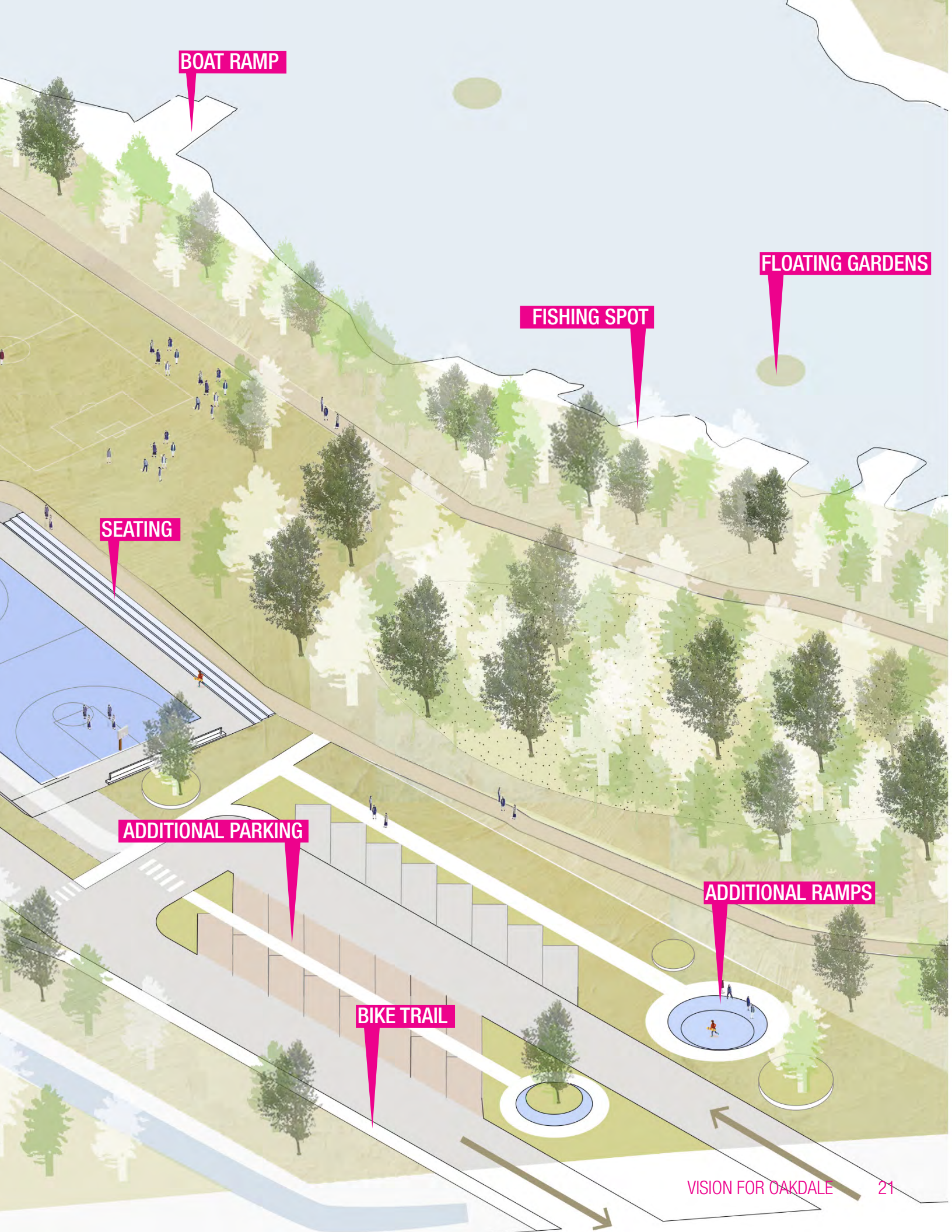
BICYCLE REPAIR

MULTI-PUPOSE LAWN

2 HALF COURTS

STAFF PARKING

STORMWATER FILTER



BOAT RAMP

FLOATING GARDENS

FISHING SPOT

SEATING

ADDITIONAL PARKING

BIKE TRAIL

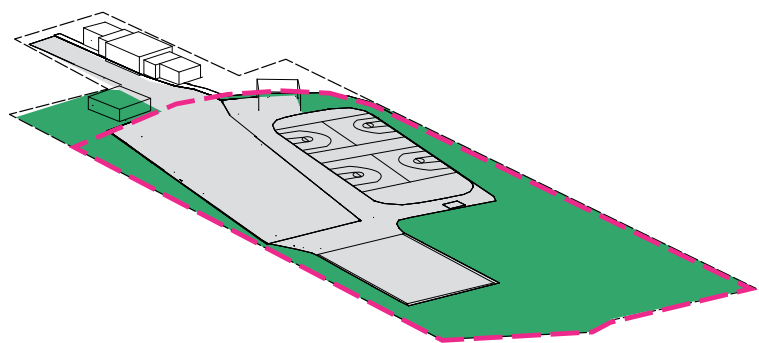
ADDITIONAL RAMPS

VISION FOR OAKDALE

2 BOARDS, HOOPS AND CARS

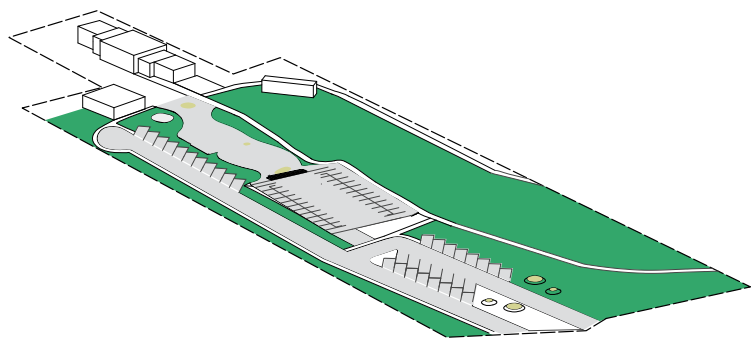
EXISTING

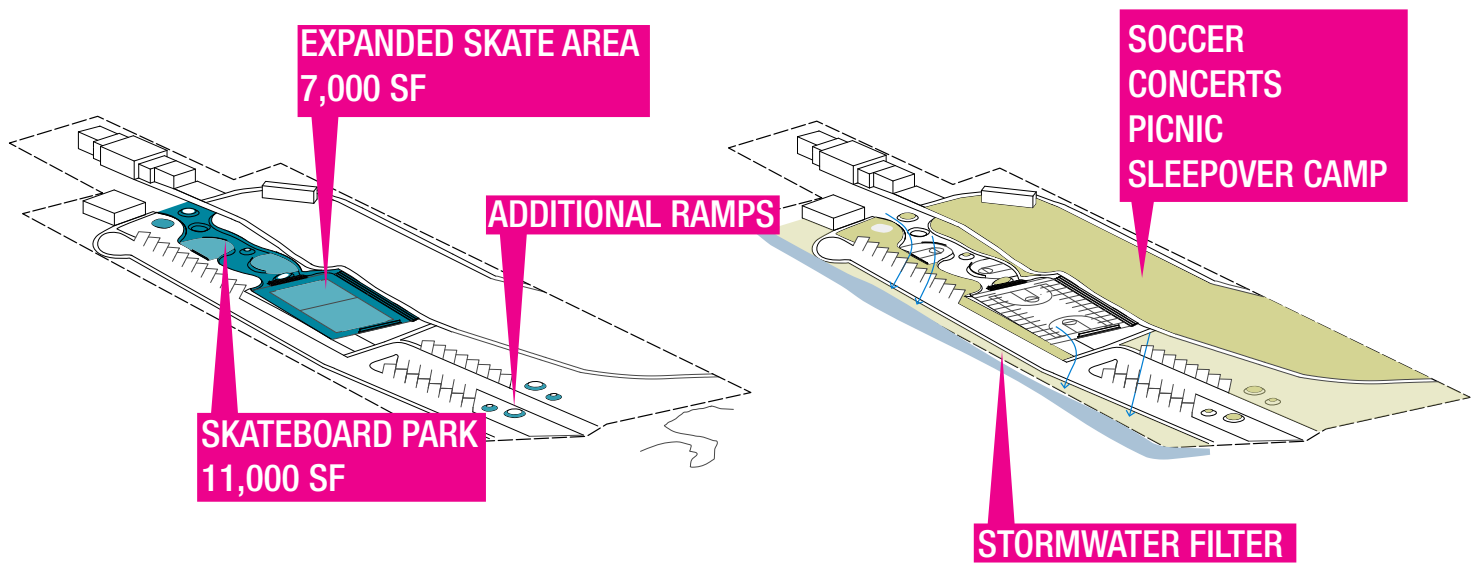
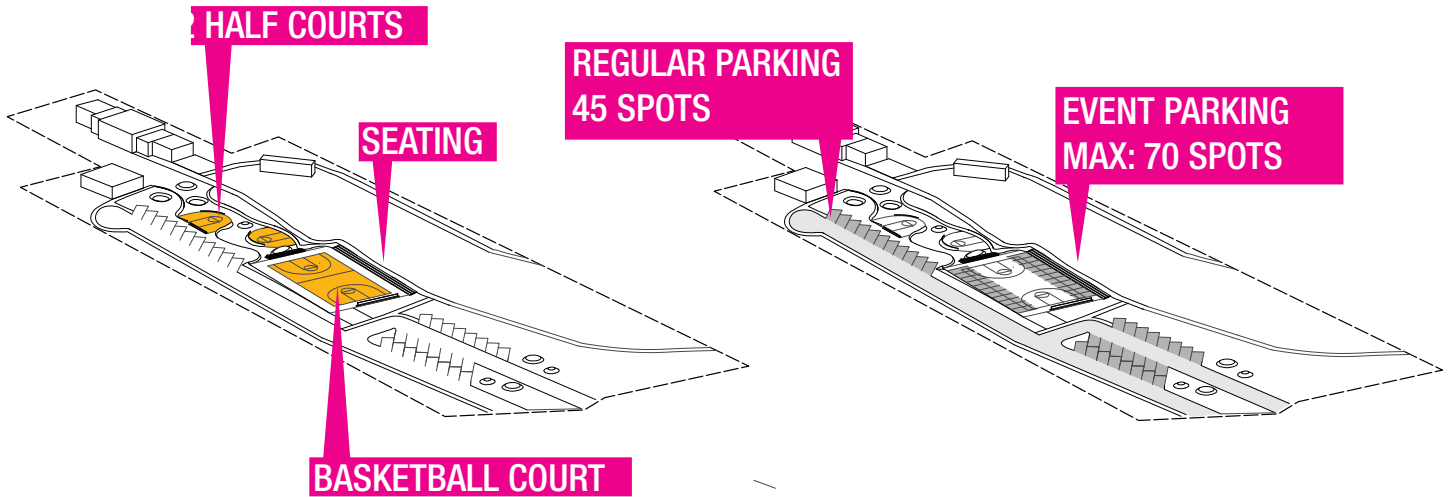
ASPHALT:	56,000 sf
Basketball:	14,500 sf
Skatboard:	8,000 sf
Parking:	33,500 sf (56 cars)
UNUSED GREEN SPACE:	50,000 sf



PROPOSED

ASPHALT:	41,000 sf
Basketball:	8,000 sf
Skateboard:	19,000 sf
Parking:	24,000 sf
GREEN SPACE:	65,000 sf
Multi-purpose lawn:	35,000 sf
Green Infrastructure:	30,000 sf





2 BOARDS, HOOPS AND CARS

Vision:

Currently, approximately 80,000 sf of asphalt are largely underutilized. The full 75 parking spots are needed during events only, the designated skateboard area is not usable because of surface conditions and the two basketball courts -only occupied fully during a few tournament events per year- are surrounded by additional asphalt surface. Left-over asphalt or lawn space surround and separate all three areas.

Consolidating these three uses into a new multi-surface landscape for skateboarding, Basketball, and parking, this arrangement of surfaces allows for flexible use of space and frees up to 35,000sf for a multi-purpose lawn for concerts, soccer or picnics. It adds bleachers to the basketball court, improves stormwater drainage, and moves vehicular traffic to the parking to North 7th Street. Select tree planting in-between spaces provides additional shade and reduces the heat island effect produced by hard surfaces.

Short Term Actions:

Paint parking area and entrance to calm traffic and allow play and skateboarding on unused parking area

Move skateboard ramps to designated areas on parking surface to utilize them.



BIOSWALE, CORNELL UNIVERSITY



BASKETBALL COURT, ALLSANDRIA, ITALY



3 LUNCH POINT

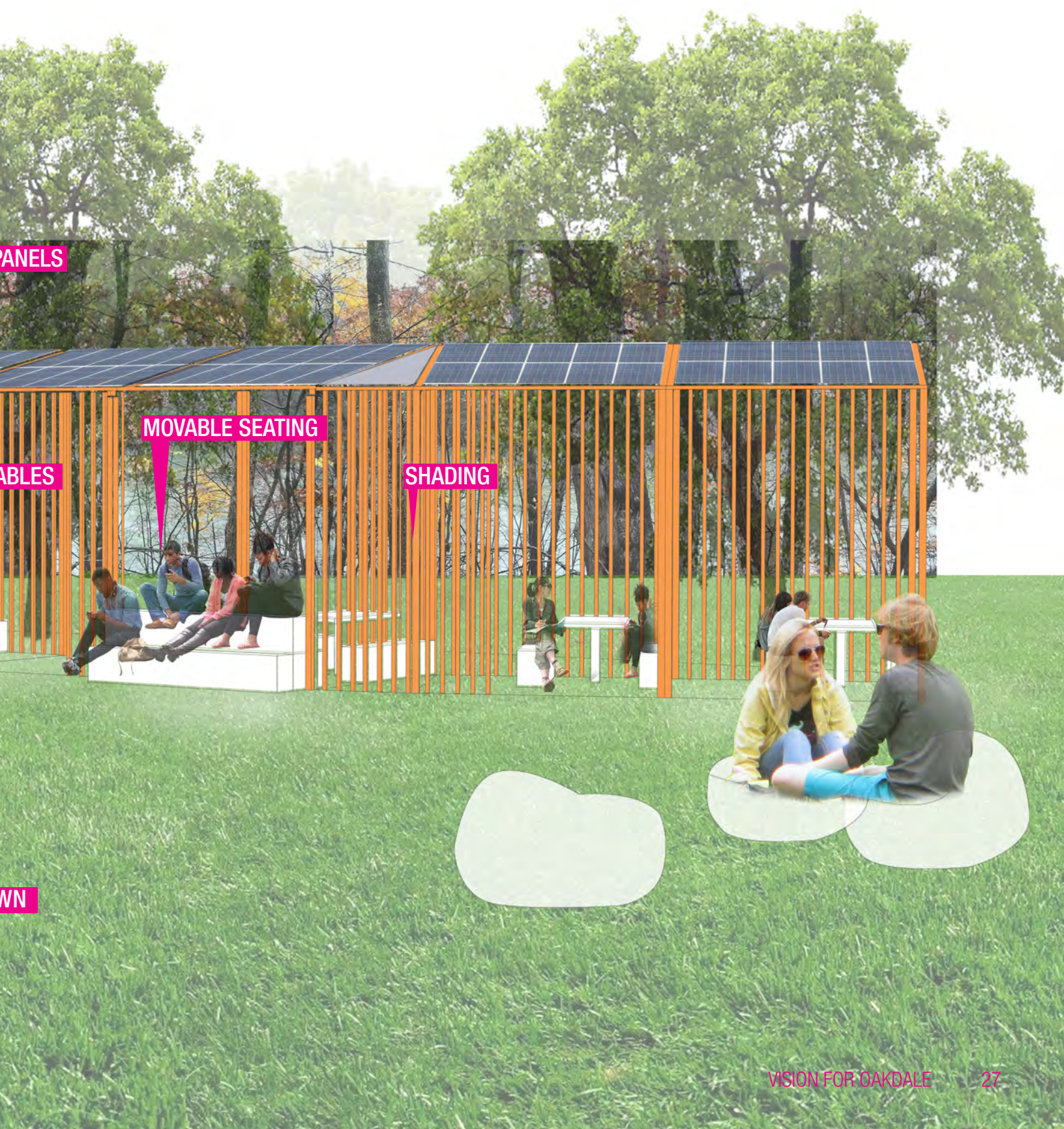


STORAGE UNIT

SOLAR P

MOVABLE TA

PLAY LAV



PANELS

MOVABLE SEATING

ABLES

SHADING

WN

3 LUNCH POINT

Vision:

Overall, there is a lack of covered areas around the lake for shade or to protect against rain or simply to provide designated areas for eating, play activities and gathering. Replacing existing and adding new pavilions throughout the park is an opportunity to highlight sights through special structures, making each pavilion its unique piece in the landscape. Here, a new and larger pavilion should replace the existing structure to provide space for breakfast and lunch for summer camp, and room for table activities and games such as futsal, Jenga, checkers, etc. Proposed as a system of segments that can be combined into varying lengths, it sits at the edge of a new multi-purpose lawn to the south and overlooking the beach to the north. It incorporates storage space for play equipment and flexible seating to allow for different group size and arrangements. Solar panels on its roof provide electricity for the park.

Short Term Action:

Utilize the momentum for already allocated funds to place solar panels on existing pavilion to jumpstart the design and construction of a new pavilion

Modular Design can be enlarged over time





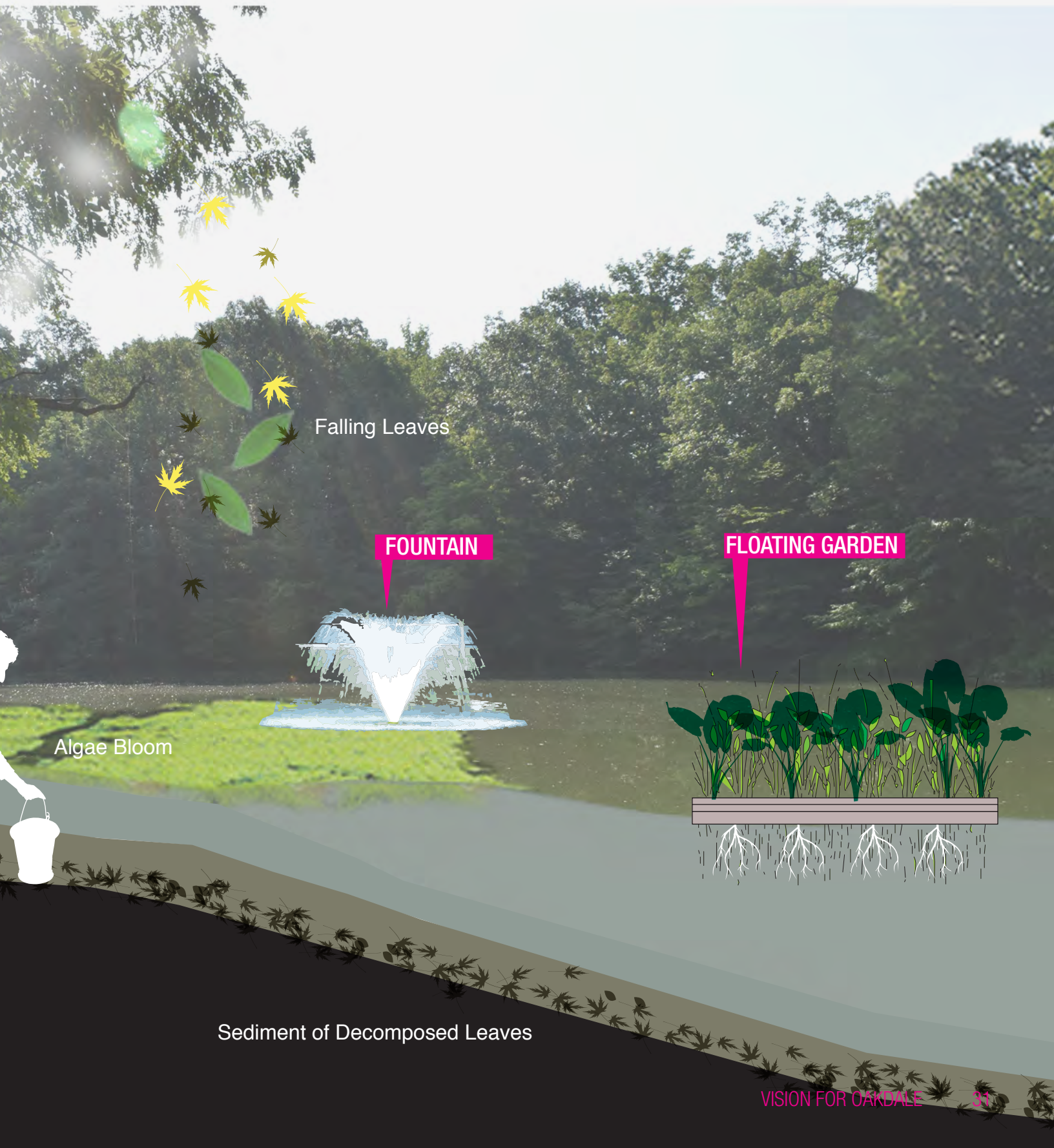
4 CLEAR WATER



AQUATIC PLANTS

ENZYME TREATMENT

Run-off



Falling Leaves

FOUNTAIN

FLOATING GARDEN

Algae Bloom

Sediment of Decomposed Leaves

4 CLEAR WATER

Vision:

Large parts of the lake are covered in algae or appear “murky” despite the excellent pollutant-free quality of the water. Algae blooms are the result of an excess of nutrients (particularly phosphorus and nitrogen) in the water. This is caused by large amounts of leaves and other natural debris falling into the lake every year. In addition, rainwater run-off contaminated with pesticides may also contribute to the excess nitrogen. To provide not only clean, but clear water for swimming, this design action describes a multi-pronged approach using natural processes. The Youth Department should continue its application of enzymes that dissolve algae. In addition, strategic planting at the edges and on floating gardens may support this process by adding plants that “compete” with algae for nutrients.

Installing a pump or fountain in a strategic location may also contribute. Oxygen greatly reduces the growth rate of algae. As a fountain near the swimming area, this can create a visual playful element in the lake surface.

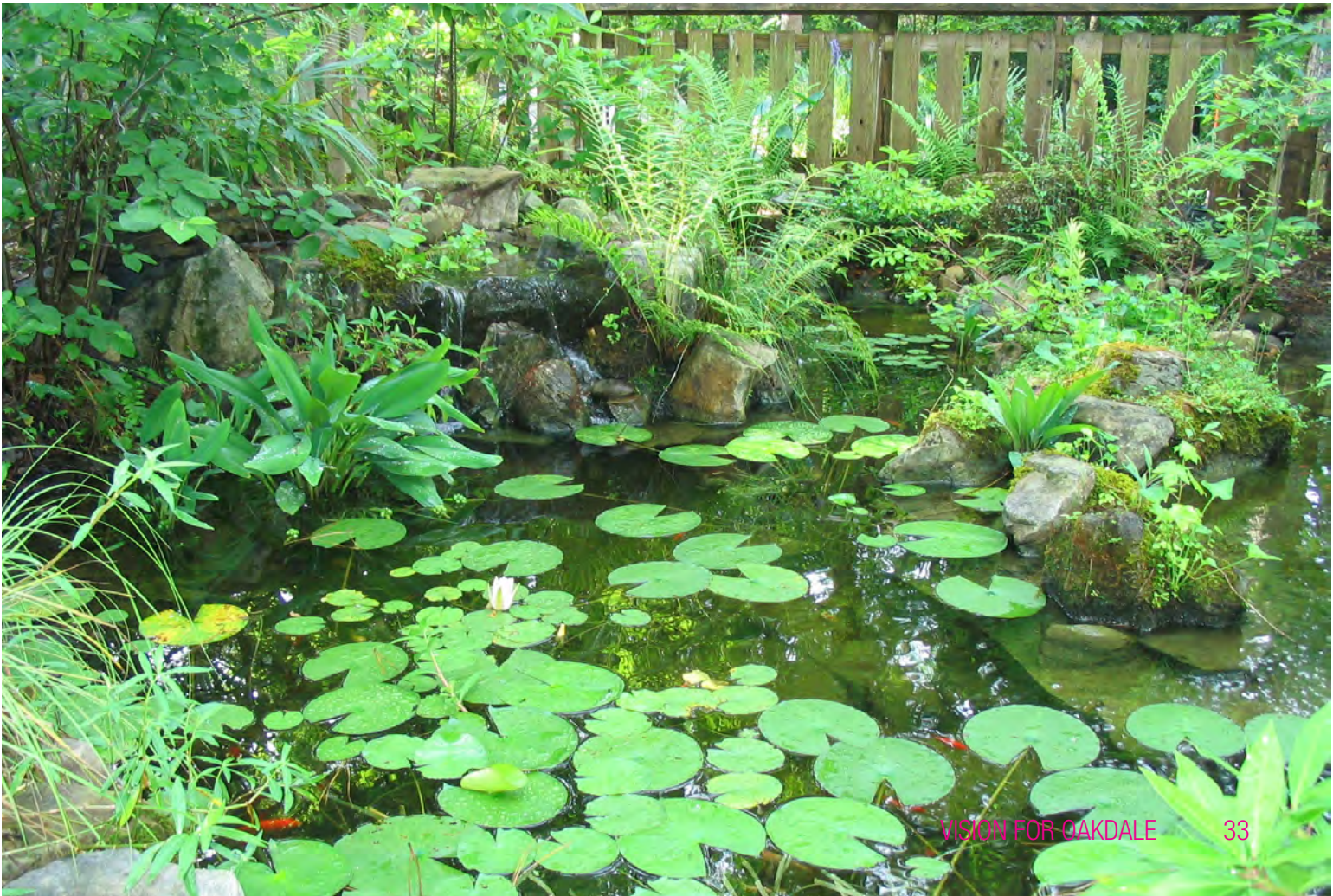
Short Term Action:

Plant edges and floating gardens as part of a summer camp/ Friends of Oakdale volunteer activity

Develop nature and science curriculum for summer camp or Kite's Nest teens and incorporate enzyme treatment and floating gardens

Fundraise for fountain





5 FOREST CLASSROOM



WOOD TABLE

MAPLE SYRUP HARVESTING



LEAF COLLECTION



WOOD STICK NEST



5 FOREST CLASSROOM

Vision:

The trail around the lake is about ½ mile long and lead along a number of interesting points including the old right-of-way of the Albany-Hudson Electric Trolley line, two ponds, a grove of maples, a wetland feeding into the lake and a number of natural fishing spots. The trail needs improvement to be accessible and safe year-round. In addition, small stations can invite to rest, learn or observe and convert the forest into an outdoor classroom. Paired with basic infrastructure such as trash receptacles they invite users to care and maintain the forest and lake.

Short Term Action:

Develop a design language for different stations and infrastructure that creates an identity
Organize volunteer crew for basic trail improvements and installation of stations
Incorporate the building of stations into summer camp activities





BIKE TRAIL



SH CLEANING TABLE



NATURE STATION

NEW BRIDGE

5 FOREST CLASSROOM

FISHING SPOT

FLOATING ISLAND

HISTORY STATION

Frog Pond



T

Wetland

NEW BRIDGE

AQUATIC PLANTS

Maple Trees

FOREST CLASSROOM

WATER ACCESS

Albany-Hudson Electric Trolley Trail

NATURE STATION

Turtle Pond

6 NATURE PLAYGROUND

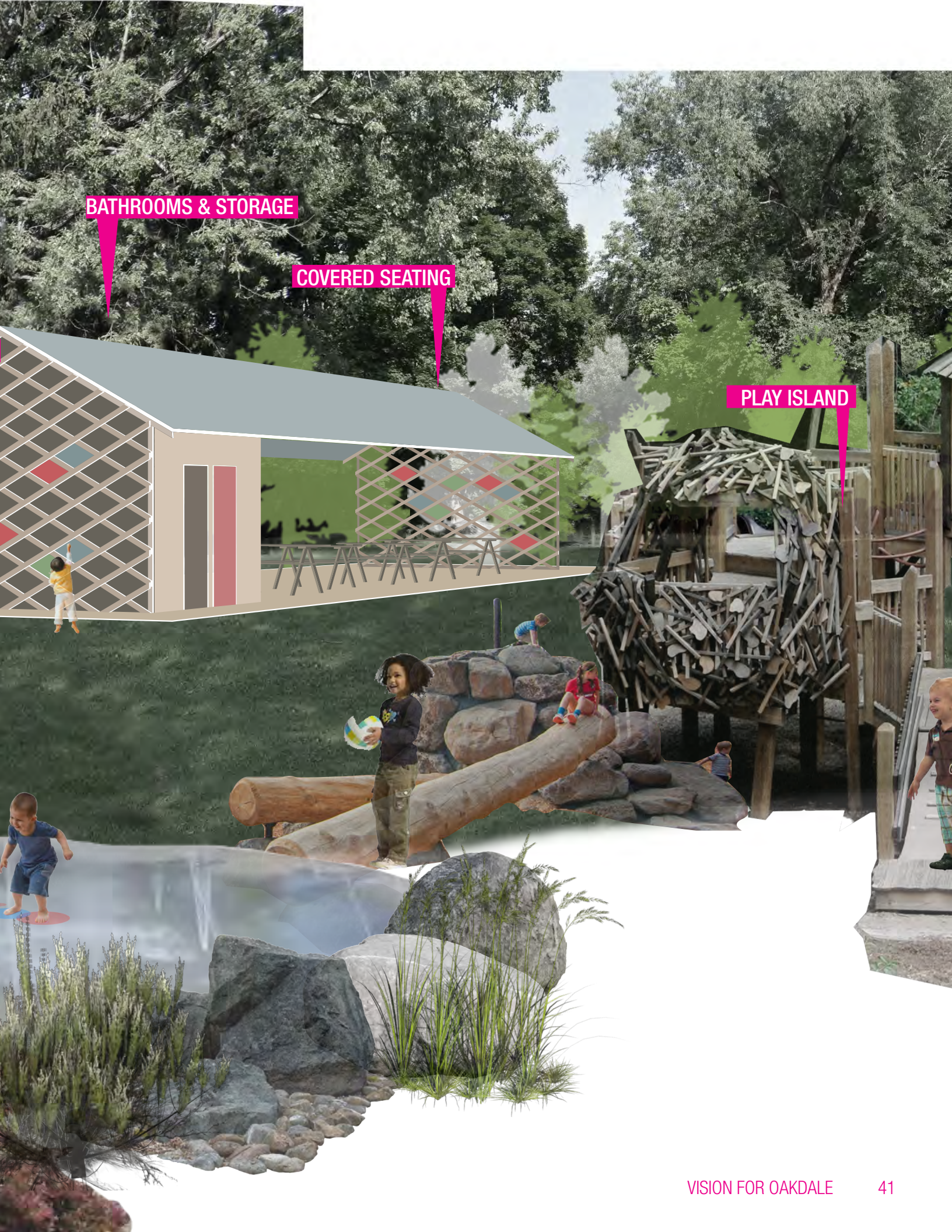


PLANTING BUFFER

PLAY WALL

CLIMBING ROCK

PLAY ISLAND



BATHROOMS & STORAGE

COVERED SEATING

PLAY ISLAND

6 NATURE PLAYGROUND

BUG HOTEL

PLAY STATION

BICYCLE PARKING

CLIMBING

PLAY ISLAND

TIC PLANTS

GLENNWOOD BOULEVARD

RAVEL / PARKING

ROCK

BATHROOM/STORAGE

PLAY STATION

CANOPY / SHADE

PLAY ISLAND

6 NATURE PLAYGROUND

Vision:

The playground at Glennwood Boulevard is the main summer camp location for 5-8 year-olds, where they spend the morning with free play. As a result of deferred maintenance, little play equipment is left and most is dated. A lack of bathrooms and especially a lack of any covered area impose huge challenges on the camp. When rain is forecast, camp has to be cancelled, because there is simply no space to spend the day dry. A new covered area that provides basic bathroom facilities and enough cover to shelter 50 people as well as storage space will be placed at the edge of the playground area along abutting private yards.

Three larger play “islands” containing new play equipment featuring natural materials are placed on either side of the path. They each feature different themes such as water play, rock climbing or wood structures. In addition, smaller play stations provide opportunities for breakout play, imagination or exploration.

Vehicle and bicycle parking along the entrance from Glennwood Boulevard encourage access use by the general public year-round and in addition to the summer camp.

Short Term Action:

Smaller play stations of logs or tree stumps, can be added to the existing equipment

A waterproof sun sail may low-cost temporary protection during rain days

Develop nature and science curriculum for summer camp and incorporate building a bug hotel or nature collecting/observing stations





7 PICNIC GROVE

Vision:

This area opposite the beach has great potential to be a place for a more quiet, private experience of the lake, a place for birthday parties, picnics or for teens and adults to have a little distance from the lively summer camp. To bring its potential to life, new picnic tables and barbeques should be positioned to invite families and small parties. A dock would allow easy access to the lake for swimming away from the beach. The “date nook” is a small pavilion providing views of the lake and the forest that invites quiet activities for small groups or protect a birthday party from a rain shower.

An additional entrance and ramp from Glenwood Boulevard provide direct access to this side of the lake, activating a shortcut through the forest to the nearby middle school.

Short Term Action:

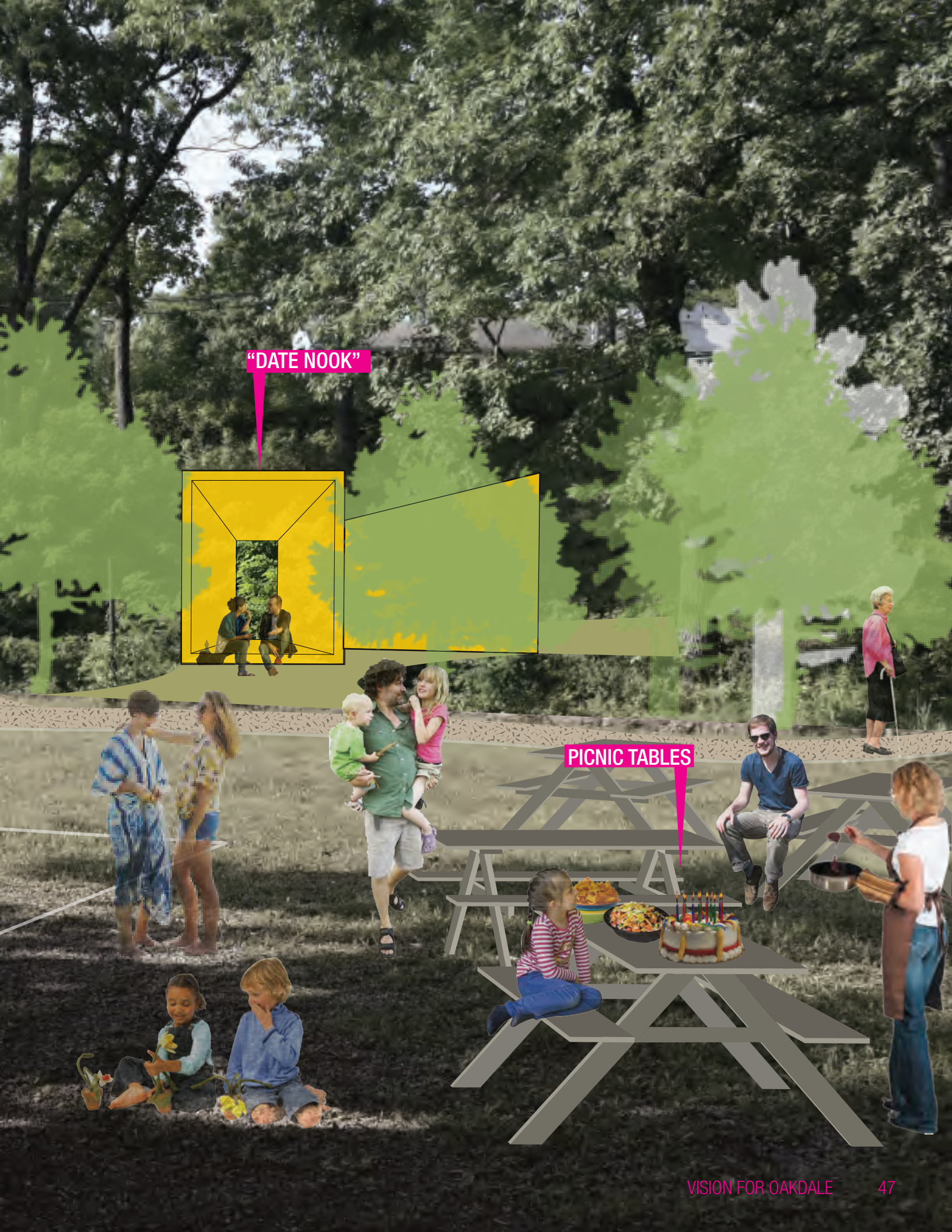
(Re)move existing equipment as needed to activate the area

Build “date nook” as an attraction/destination on this side of the lake

Remove invasive species (especially phragmites at water edge and in former wading pool)

Organize a bond fire event/picnic with existing fire pit



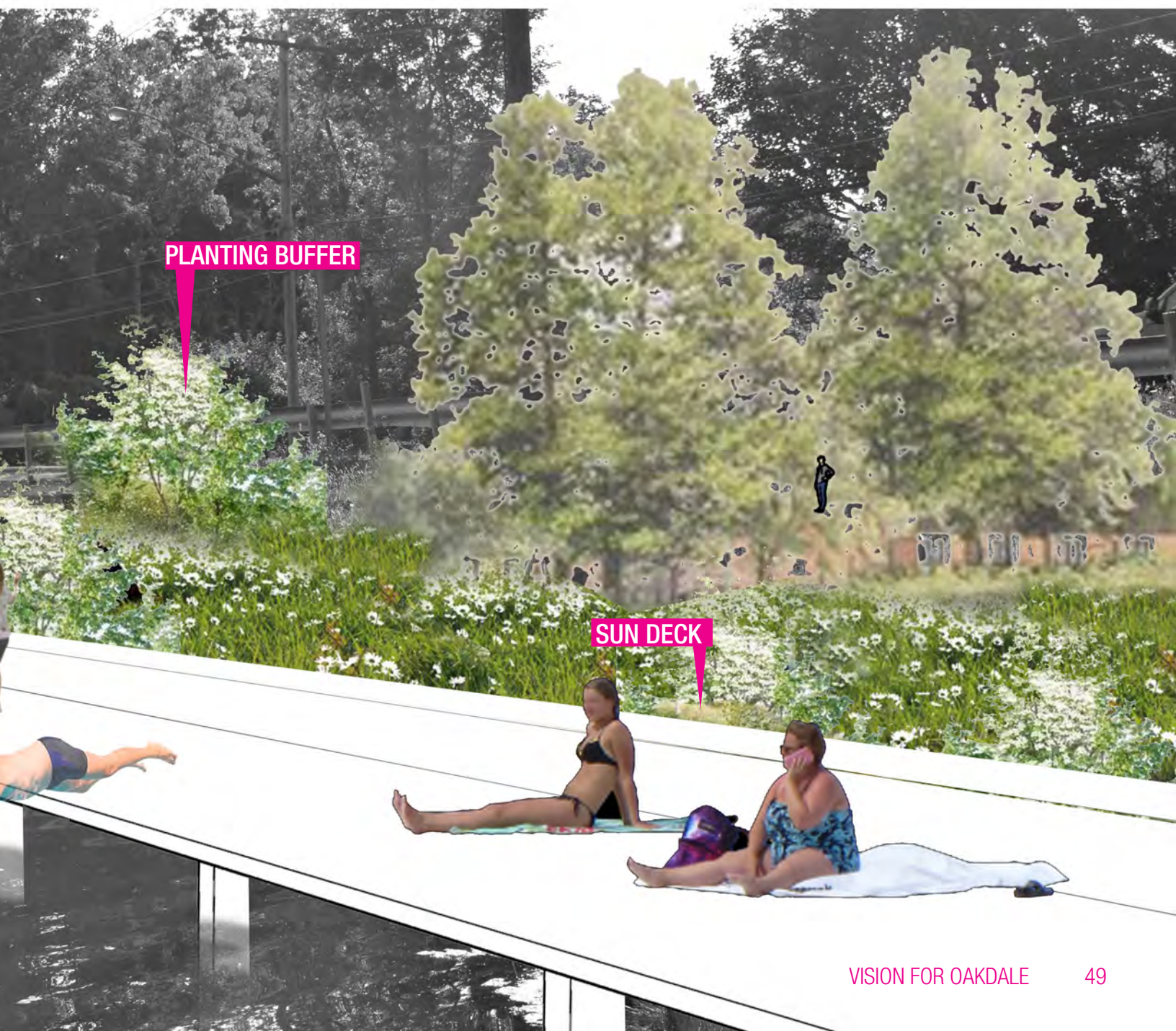


"DATE NOOK"

PICNIC TABLES

8 DIVING BOARD





PLANTING BUFFER

SUN DECK

8 DIVING BOARD

Vision:

The edge along North 6th Street is the main connection between the playground/picnic area and the beach, but very narrow and adjacent to traffic. Historically swimming contests have been held here. This Design Action proposes to improve this linear strip with a deck along the entire length of the lake to provide more space for walking as well as different ways to access the water from a toddler water play area at the southern end to places to sit and sunbath on the deck, to jump in and swim where the water is deep enough. It offers a different experience than sand and is buffered with a line of shrubs and plants that block the direct view from North 6th Street.

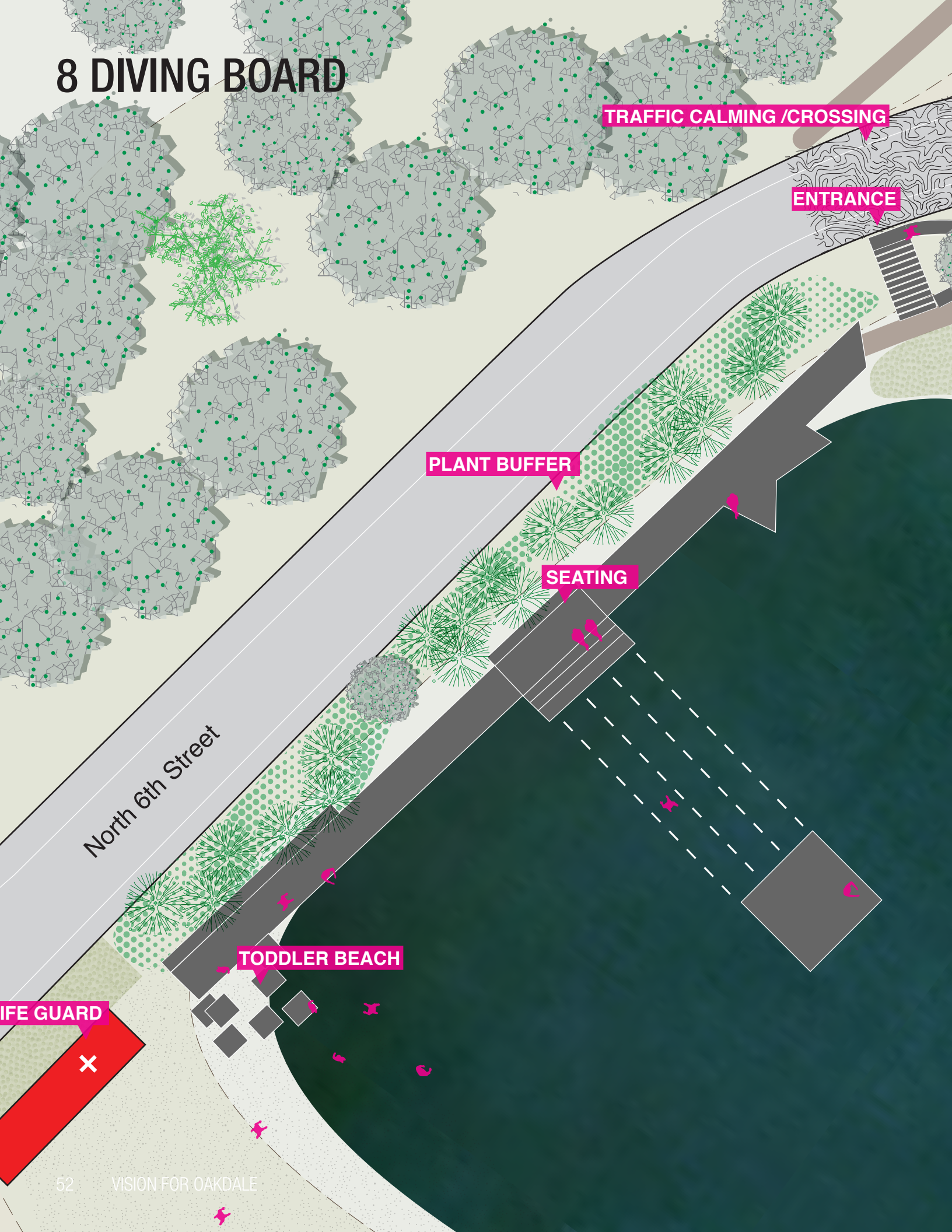
Short Term Action:

Organize volunteer planting of buffer area
Remove existing defunct concrete and steel structures





8 DIVING BOARD



TRAFFIC CALMING /CROSSING

ENTRANCE

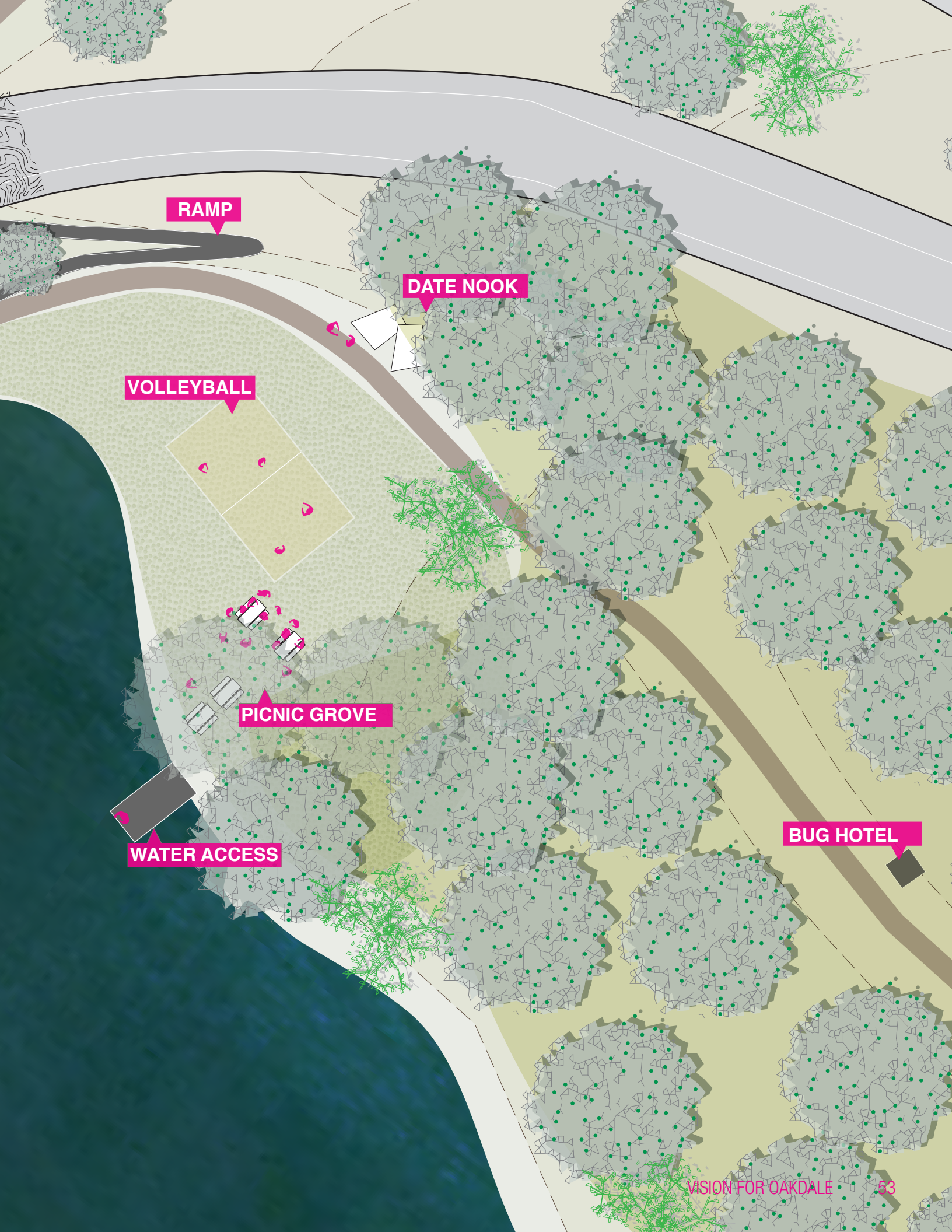
PLANT BUFFER

SEATING

North 6th Street

TODDLER BEACH

LIFE GUARD



RAMP

DATE NOOK

VOLLEYBALL

PICNIC GROVE

WATER ACCESS

BUG HOTEL

+1 ICE SKATING







UNDERHILL POND

Wading
Pool

Run on
trail

Beach
Volleyball

Picnic
Areas

Fishing
Boatwork

Restore that
building
from 1948
& have a dive
inside!

GLENWOOD BLVD

ICE
RINK

Ice Skating

Upgrade
Beach
House -
Use for other
things

Skateboarding

OAKDALE LAKE

Fishing
Pier

Dog Park

FITNESS
Trail

SKATEPARK

Re surfaced
enlarged
Rebuilt

Lifeguards even after
camp ends. The last
2 weeks of August
are often some of the
hottest weeks of the
year & lots of people
have vacation time. The
lake should be open then.

COLUMBIA

GSAPP

HUDSON VALLEY
INITIATIVE

boat races