

# THE EARTH INSTITUTE (LA!)

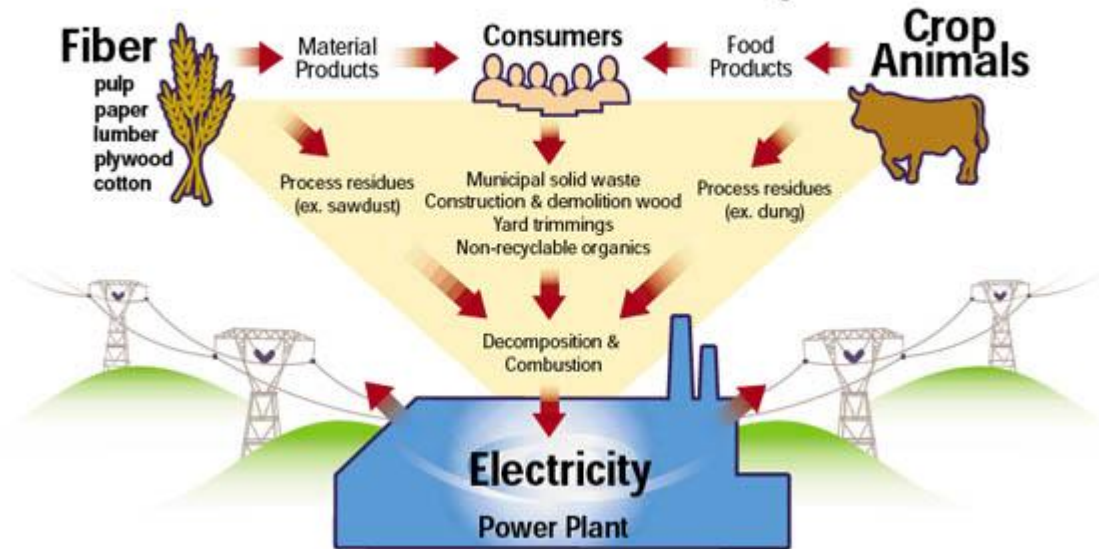


The new Earth Institute building on the hills of Los Angeles is an active campus that brings together multiple disciplines in one place. Taking advantage of the local environment and its proximity to downtown Los Angeles, this think tank is also a place of experimentation for scientists to research issues of air quality, wildfires, and drought in California.

This institution is a place for scientists and students to develop new technologies to capture CO<sup>2</sup> emissions, reduce the use of fossil fuels in power generation, transportation and industrial processes. This is a place to develop change in every aspect of modern life from manufacturing, agriculture, and transportation. Discussions about change in every aspect of the economy would require multiple users from scientists, students, economists, and policy makers.

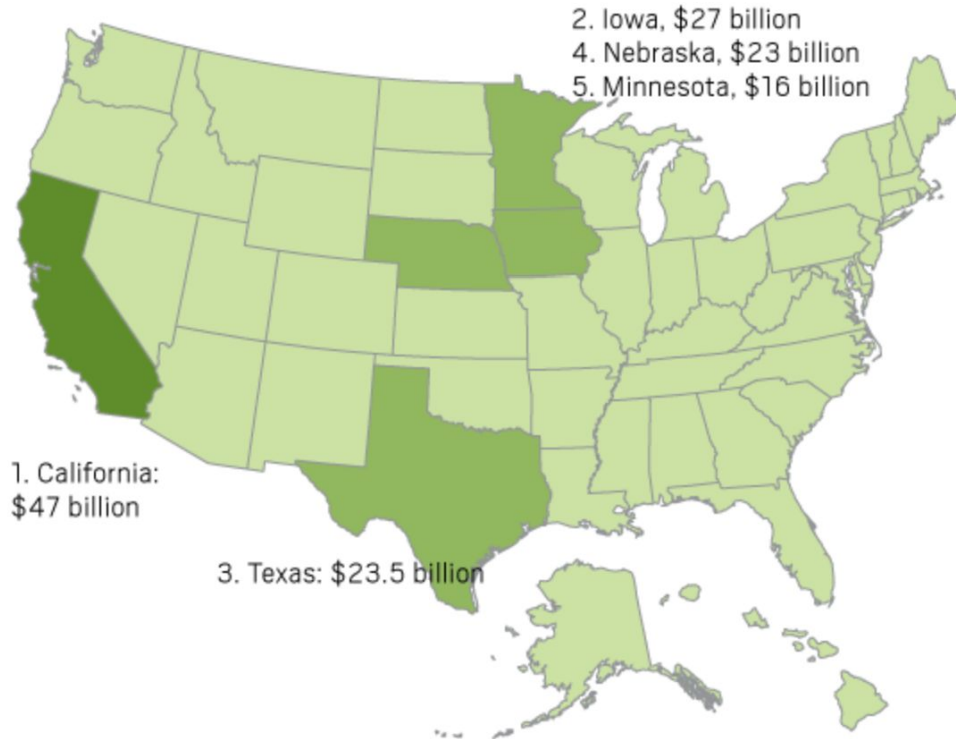
Our proposal introduces multiple circulation routes for these multiple users. As a place of experimentation spaces are flexible and programs overlap both visually and spatially.

# Biomass to Electricity



## Top five states

California's cash receipts in 2015 were first in the nation and \$20 billion more than the second highest ranked state.





## Leading the nation

While California produces 13 percent of the total cash agricultural receipts for the U.S., it is the sole producer (99 percent or more) for the following crops.



Almonds



Figs

Olives



Peaches



Artichokes



Kiwifruit



Dates



Pomegranates



Raisins



Sweet rice



Pistachios



Plums



Walnuts

# California produces...





● KLAMATH NATIONAL FORREST,  
Fire salvage, northern California  
700 Miles



● Walnut shells, Winters, CA  
400 Miles



● Sawmill residues, Sierra Forest  
Products, Terra Bella, CA  
144 Miles

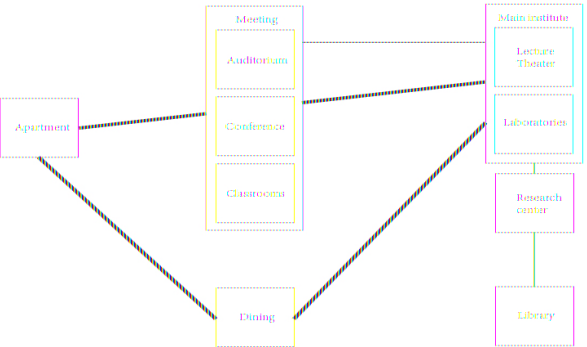


● Farm Waste, Kern, CA  
60 Miles

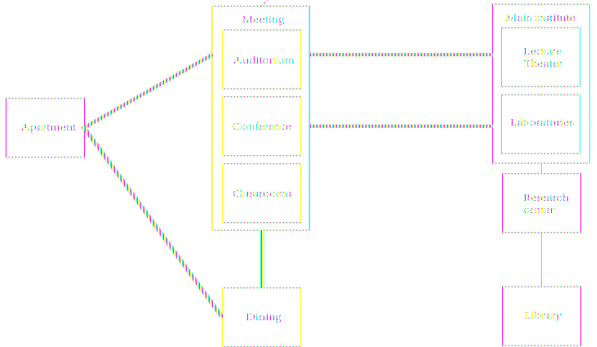


● Municipal waste, Chino, CA  
55 Miles

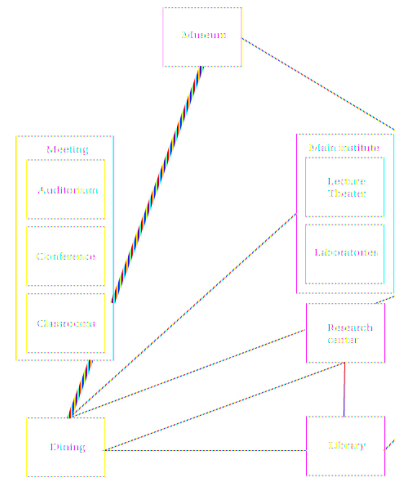




CU Teachers and students

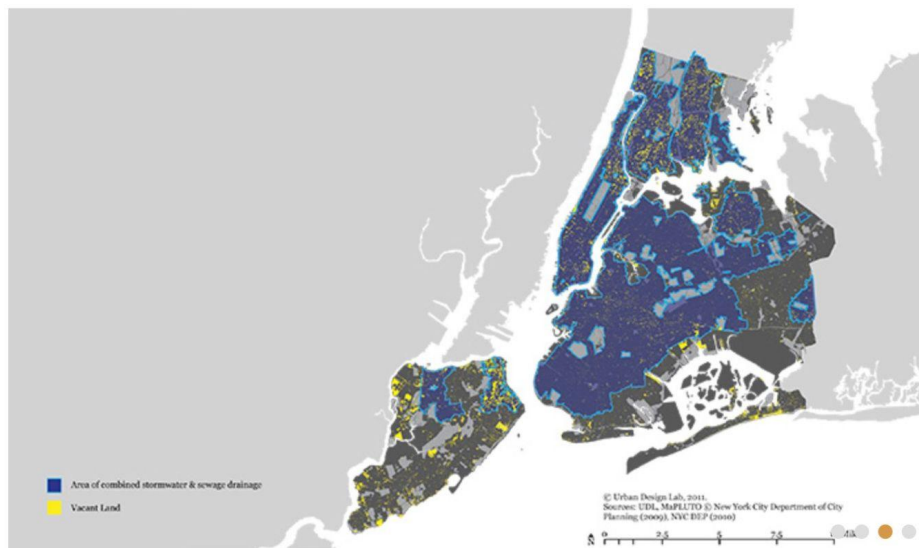


Think tank scholars



Public

## The Potential for Urban Agriculture in New York City



Combined Sewer Areas

### Projects

- + Social Media and the Urban Environment
- + Academic Research
- + Coastal Cities Resiliency
- + Green and Sustainable Infrastructure
- + Climate Change Adaptation
- Food and the Urban Environment

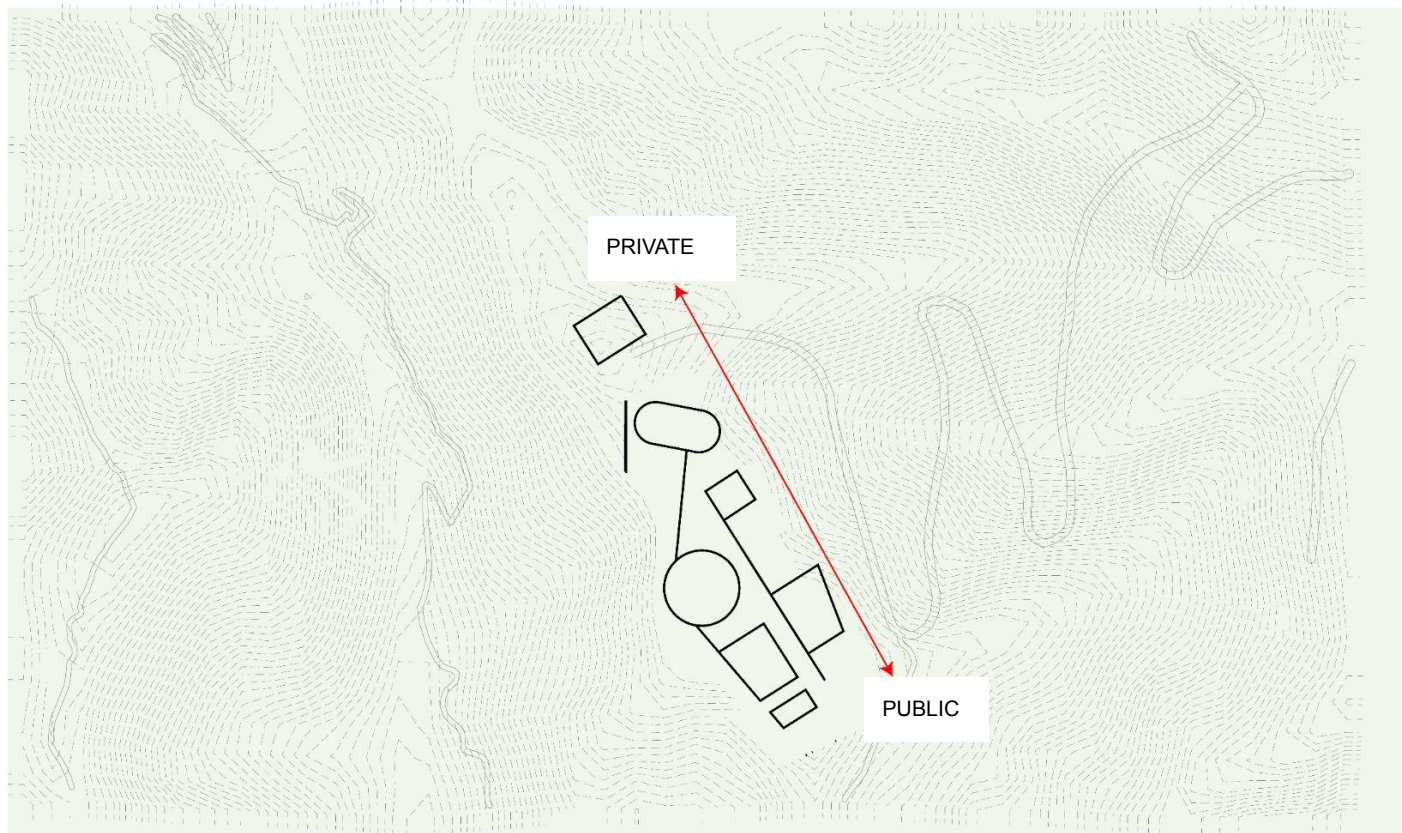
NYC Regional Foodshed Initiative

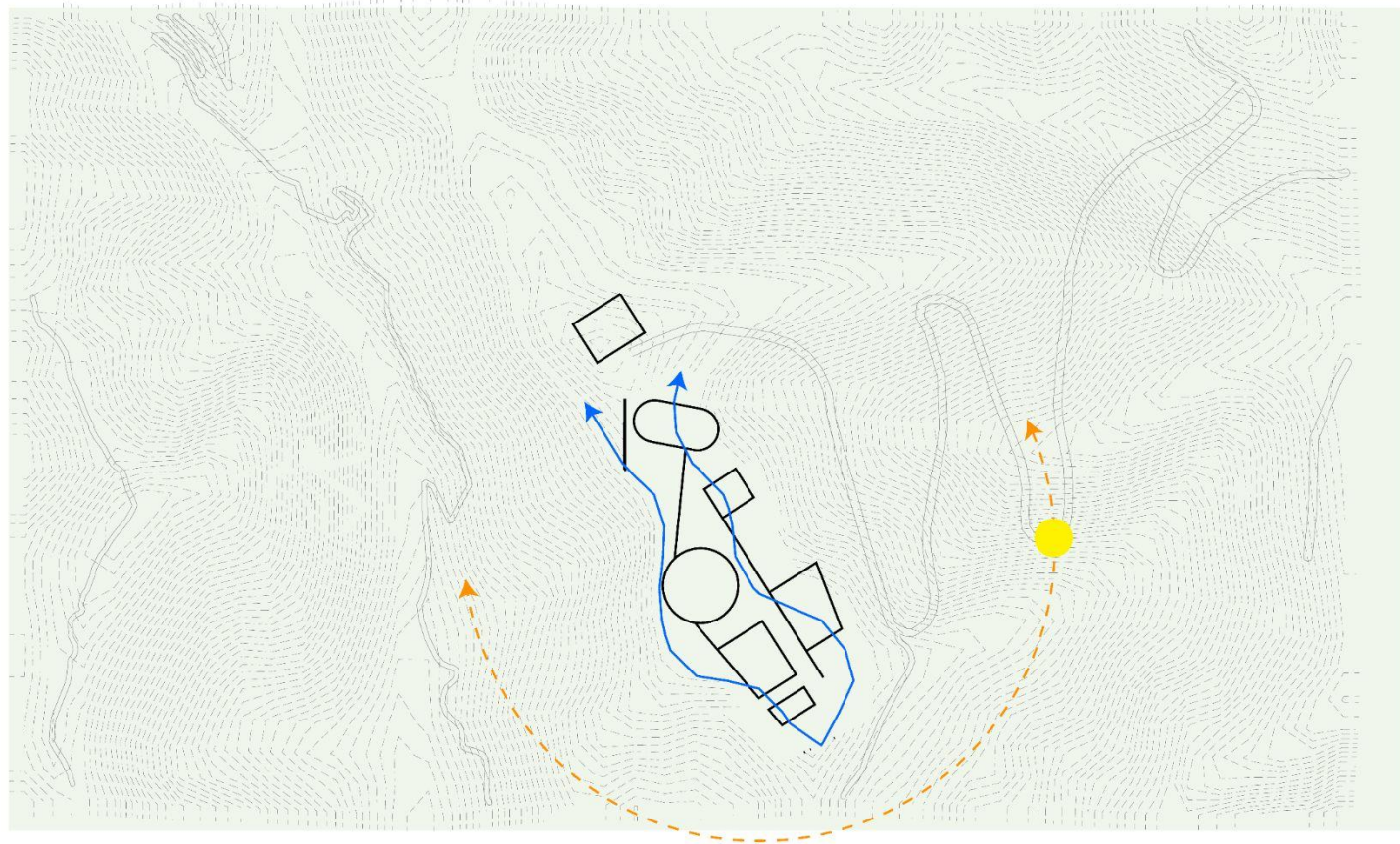
National Integrated Regional Foodshed Model

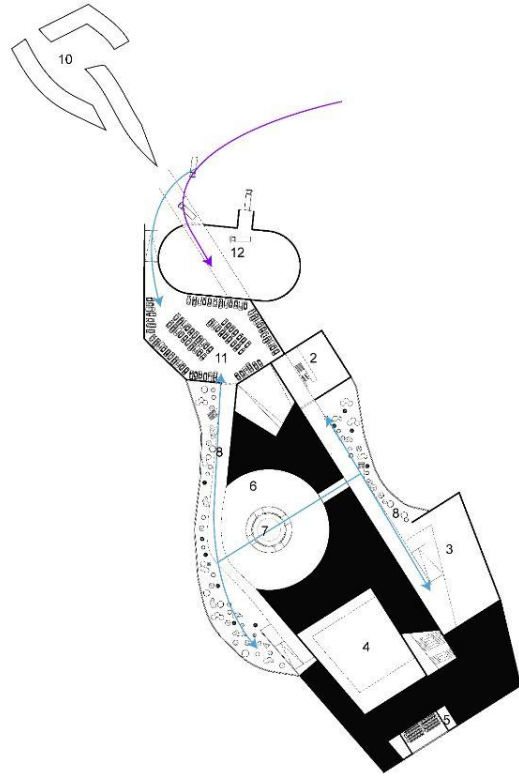
Urban Agriculture: Confirming Viable Scenarios for Production

The Potential for Urban Agriculture in New York City

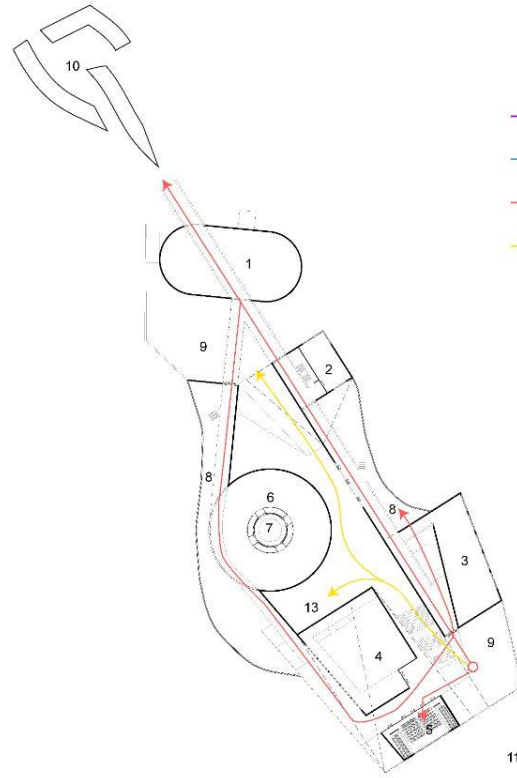
Curbing Childhood Obesity: Searching for Comprehensive Solutions







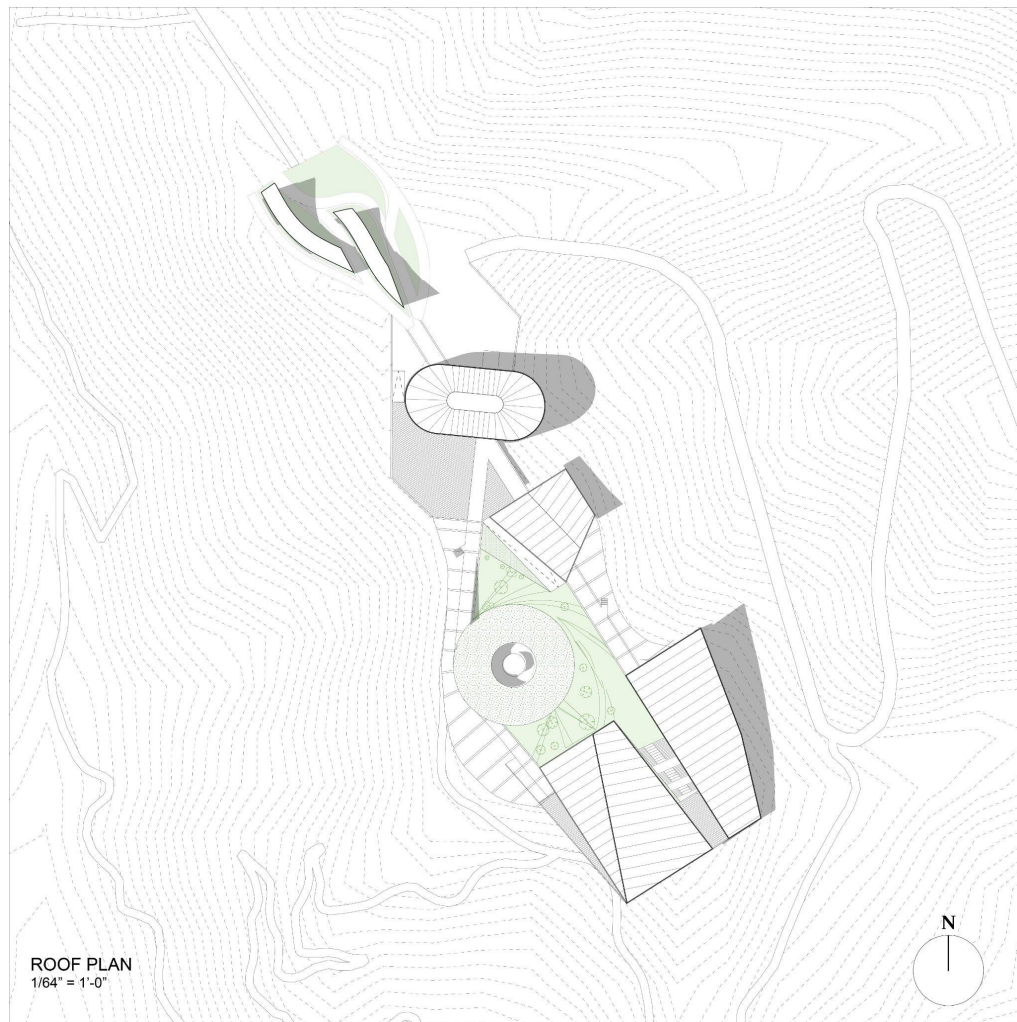
FLOOR 1

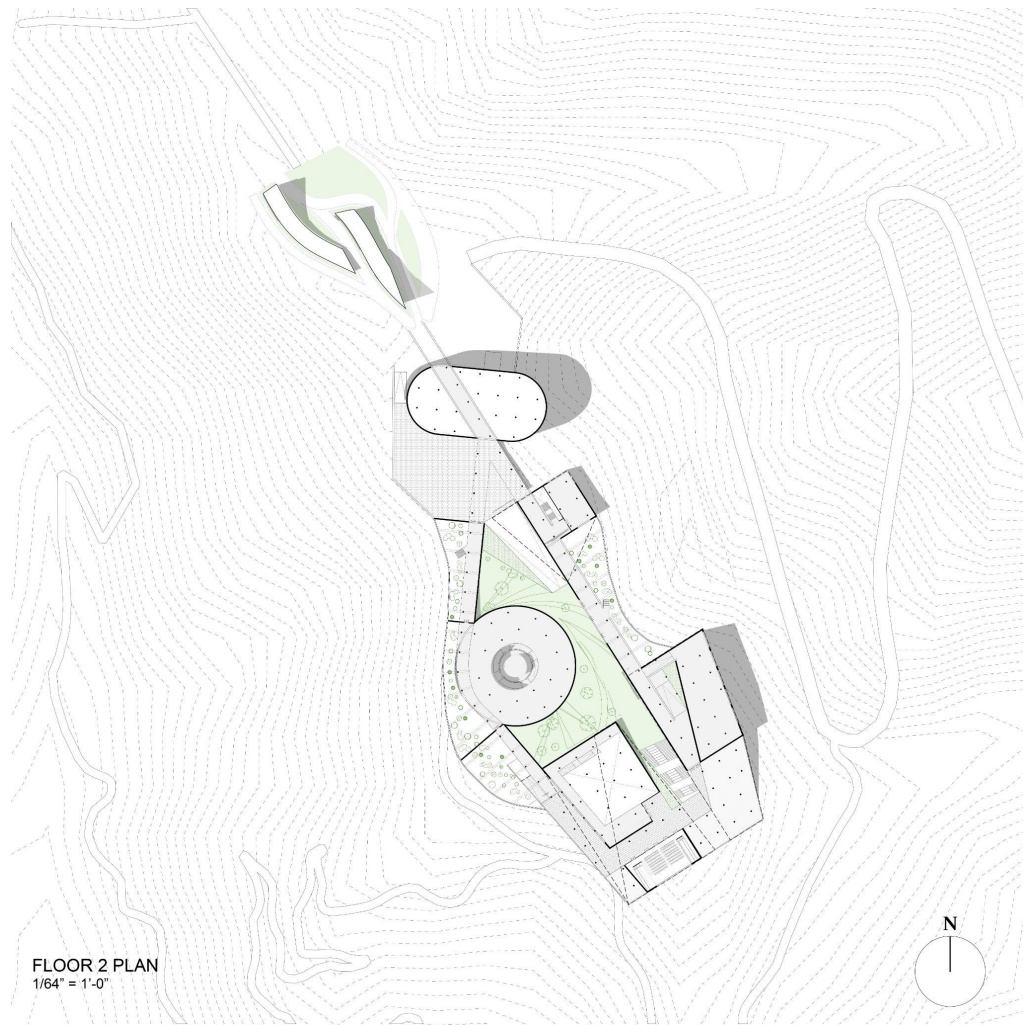


FLOOR 2

- Biomass Truck Circulation
- Scientist/Student Circulation
- Secondary Public Circulation
- Secondary Circulation

- 1. Biomass Plant
- 2. Research Center
- 3. Main Institute
- 4. Conference Hall
- 5. Auditorium
- 6. Library
- 7. Seed Bank
- 8. Greenhouse
- 9. Plaza
- 10. Residences
- 11. Parking Lot
- 12. Loading Dock
- 13. Park

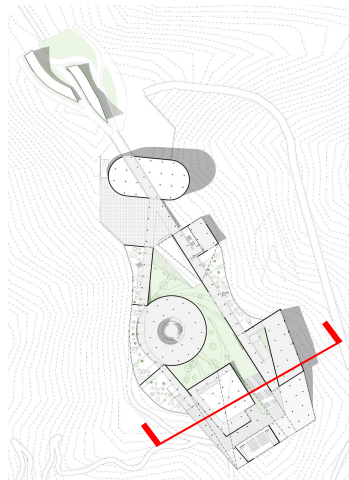




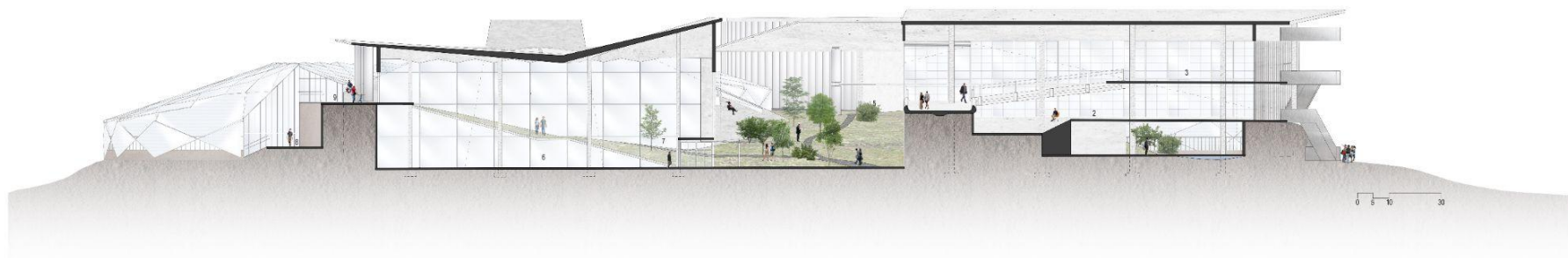
FLOOR 2 PLAN  
1/64" = 1'-0"

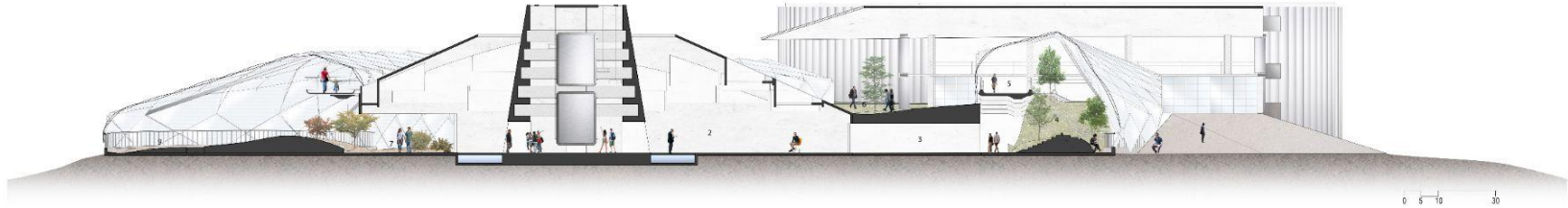
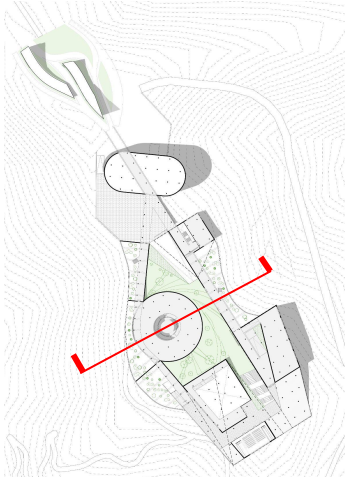


FLOOR 1 PLAN  
1/64" = 1'-0"



1. Laboratories
2. Forum
3. Main Institute
4. Botanical Garden
5. Dining Space
6. Conference Hall
7. Slope
8. Greenhouse Lower Entrance
9. Greenhouse Higher Entrance



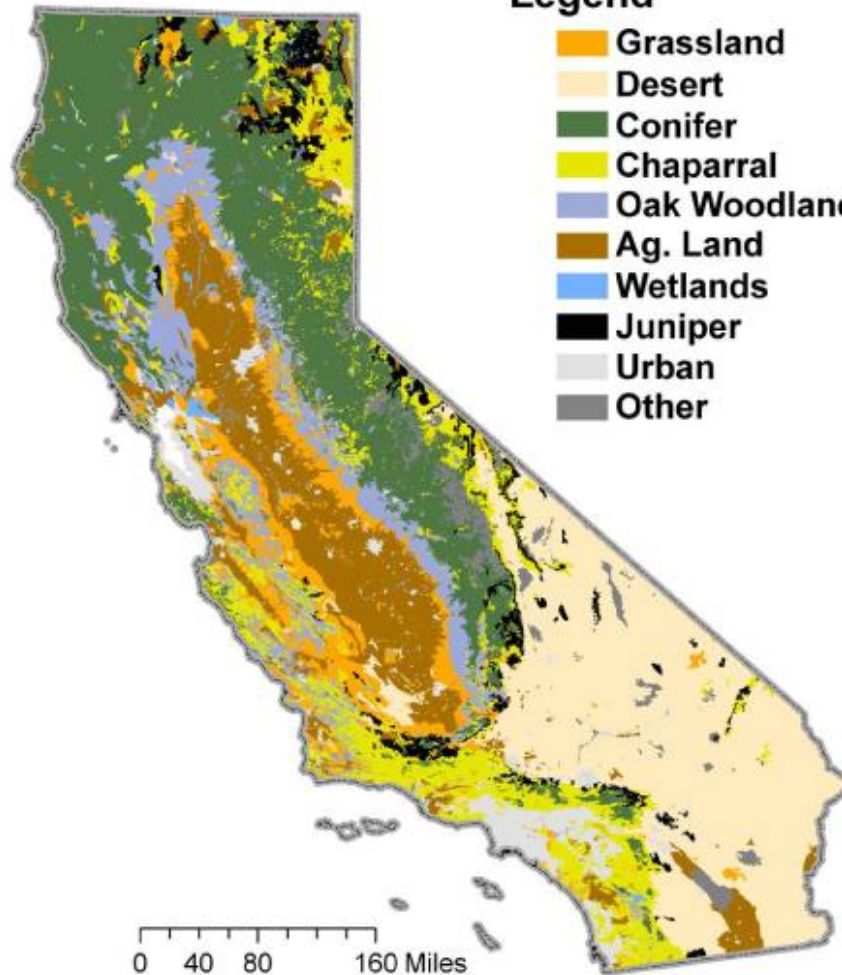


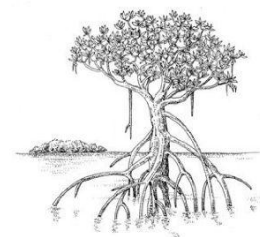
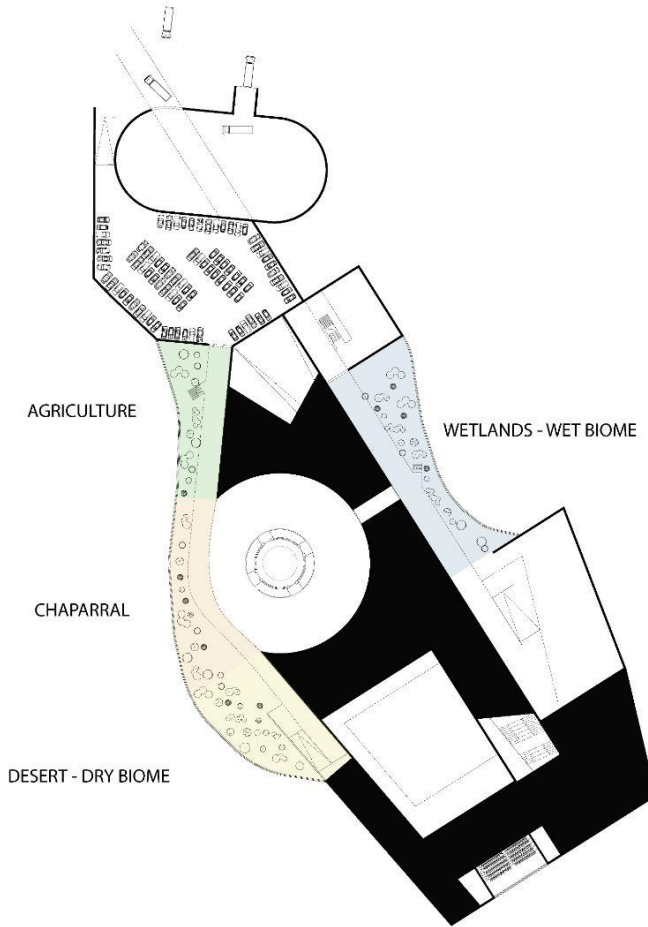
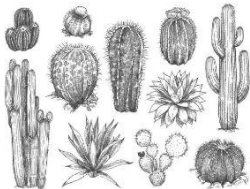
1. Seed Bank
2. Library
3. Tunnel from Greenhouse to Library
4. Greenhouse - Wet climate
5. Greenhouse - Higher Circulation
6. Botanical Garden
7. Greenhouse - Local climate
8. Greenhouse - Higher Circulation
9. Greenhouse - Dry Climate

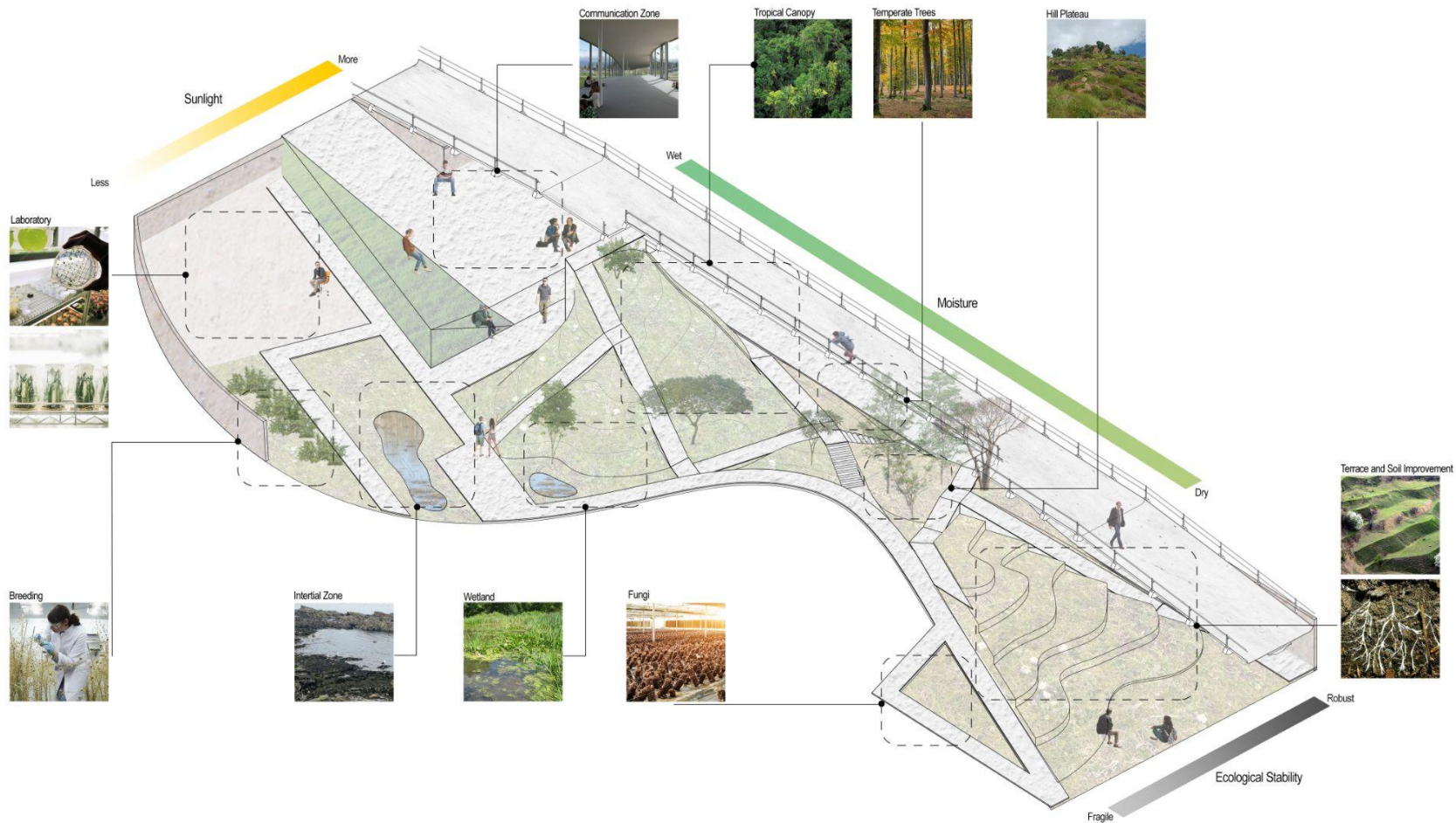


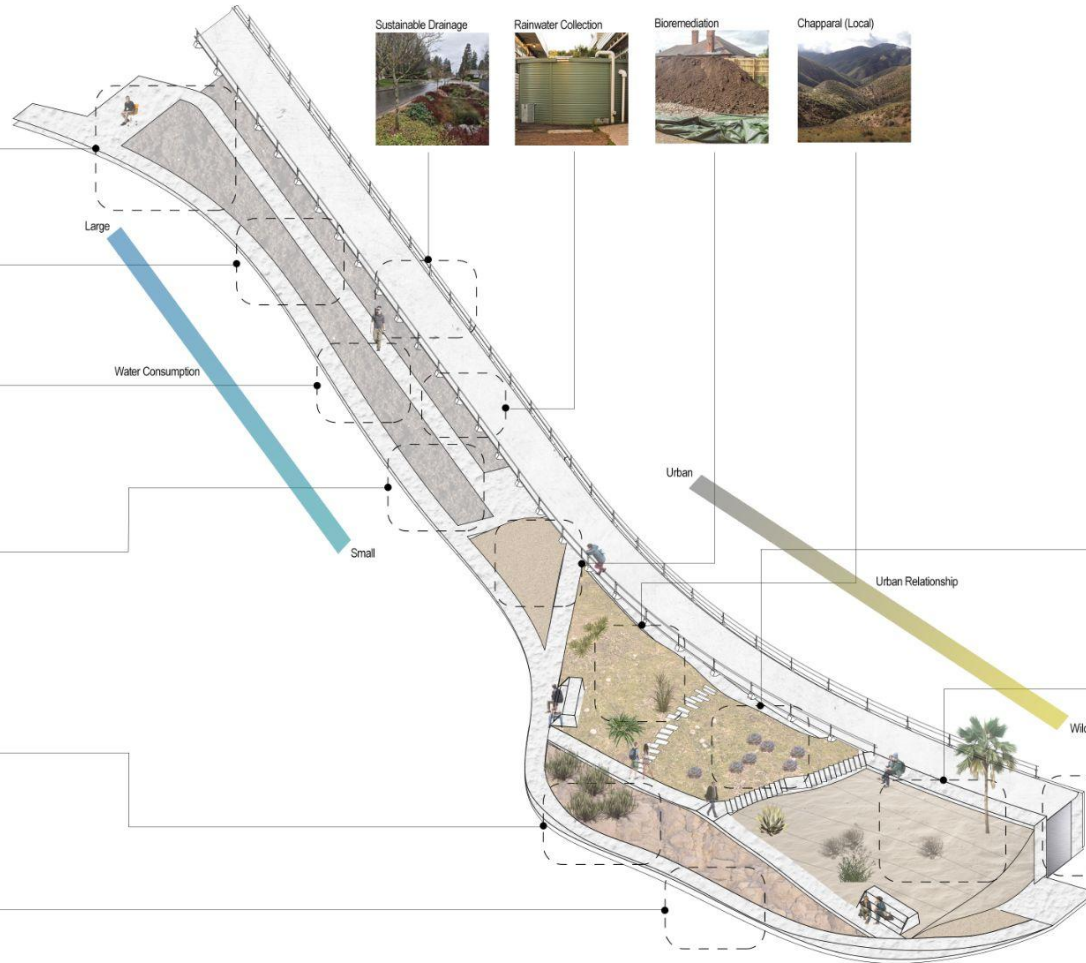
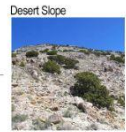
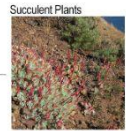
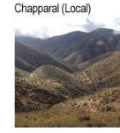
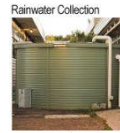
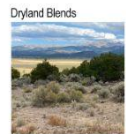
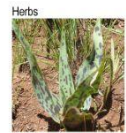
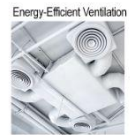
## Legend

- Grassland
- Desert
- Conifer
- Chaparral
- Oak Woodland
- Ag. Land
- Wetlands
- Juniper
- Urban
- Other









Large

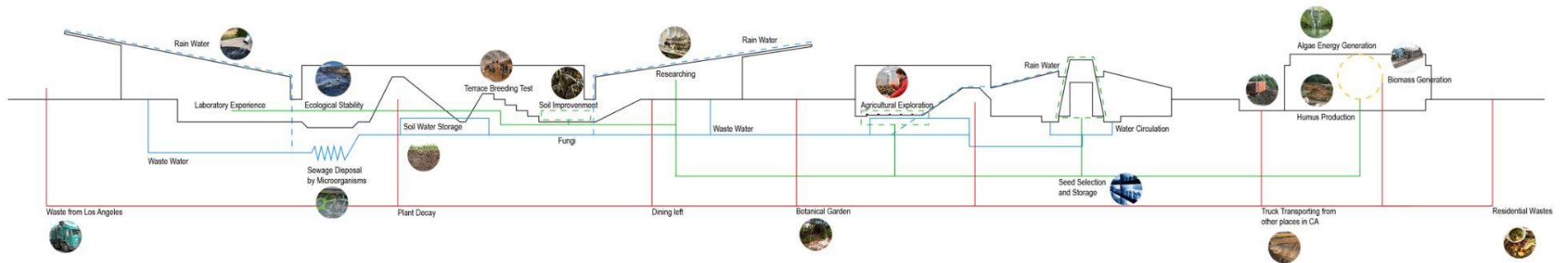
Water Consumption

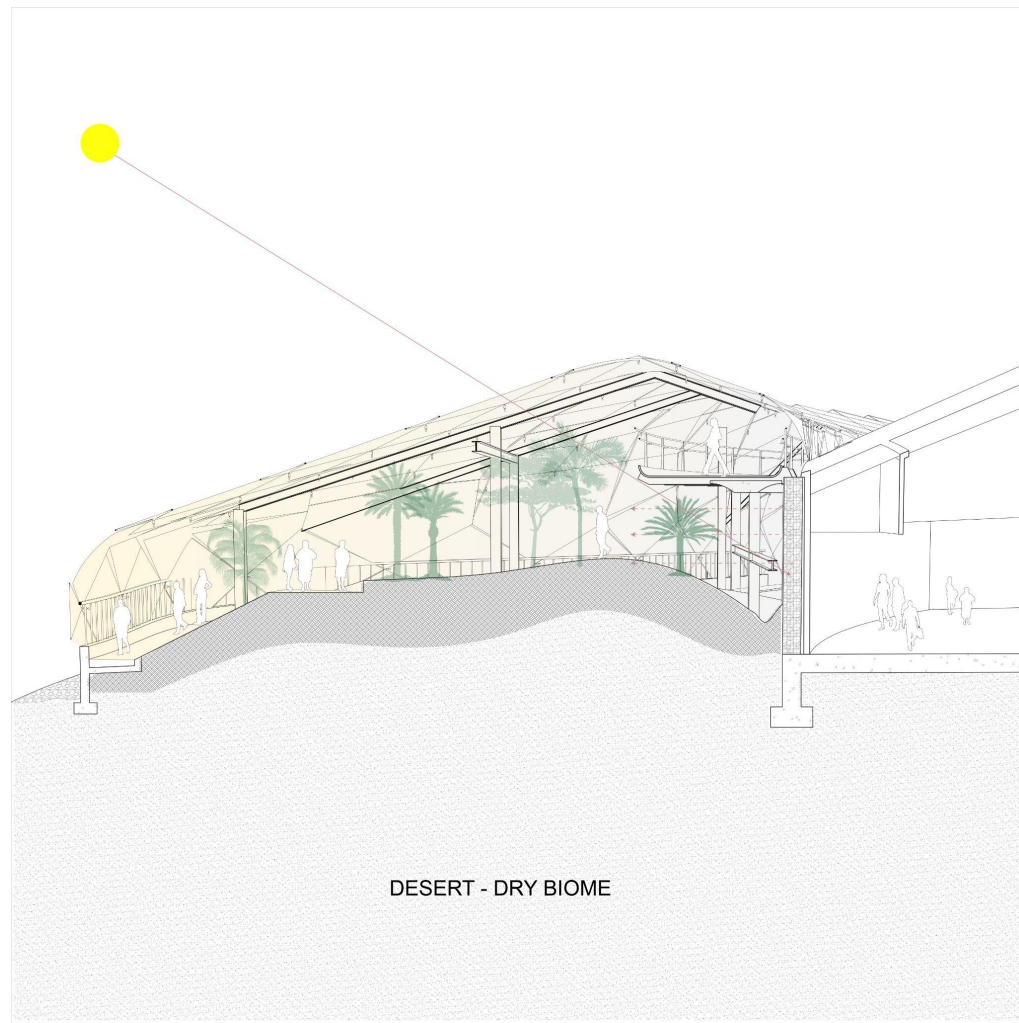
Small

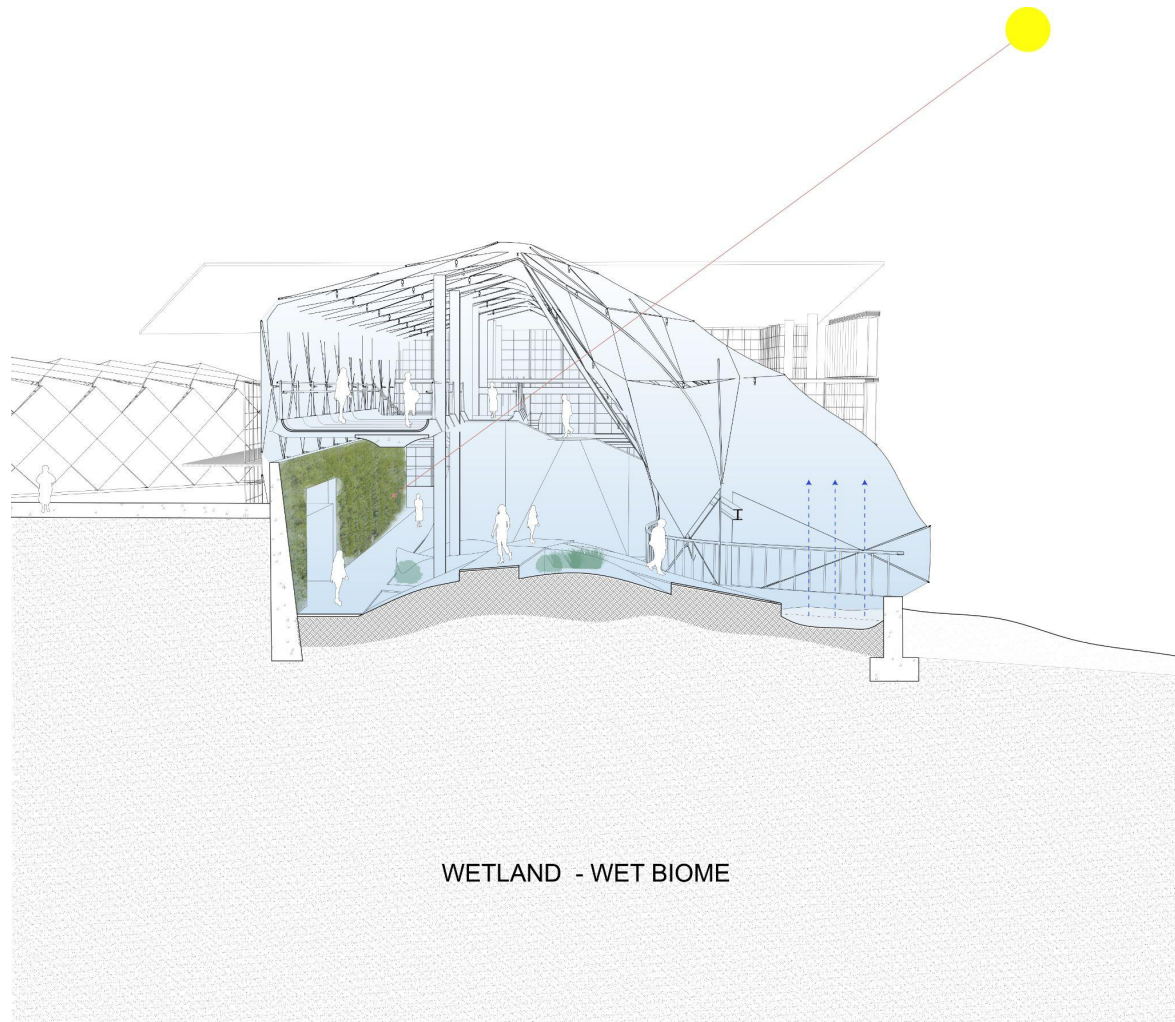
Urban

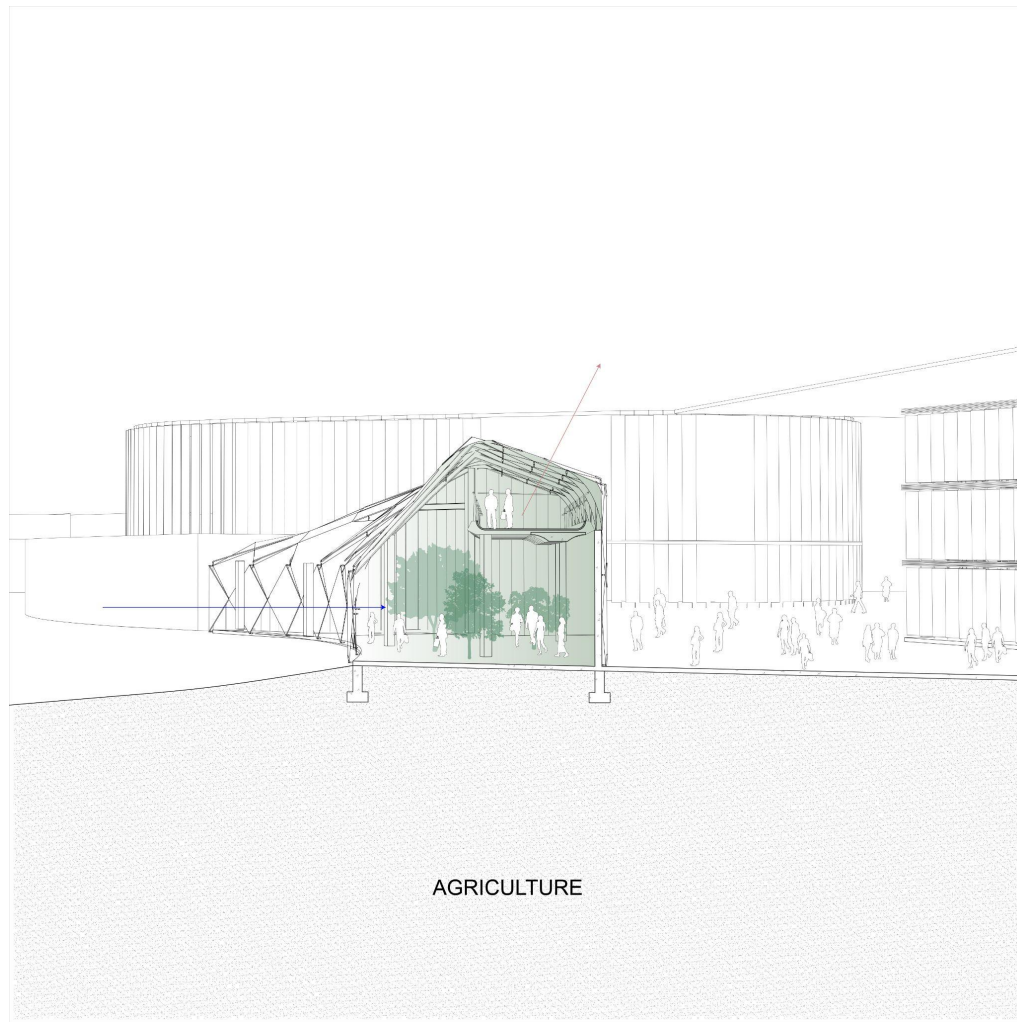
Urban Relationship

Wild









The Earth Institute

