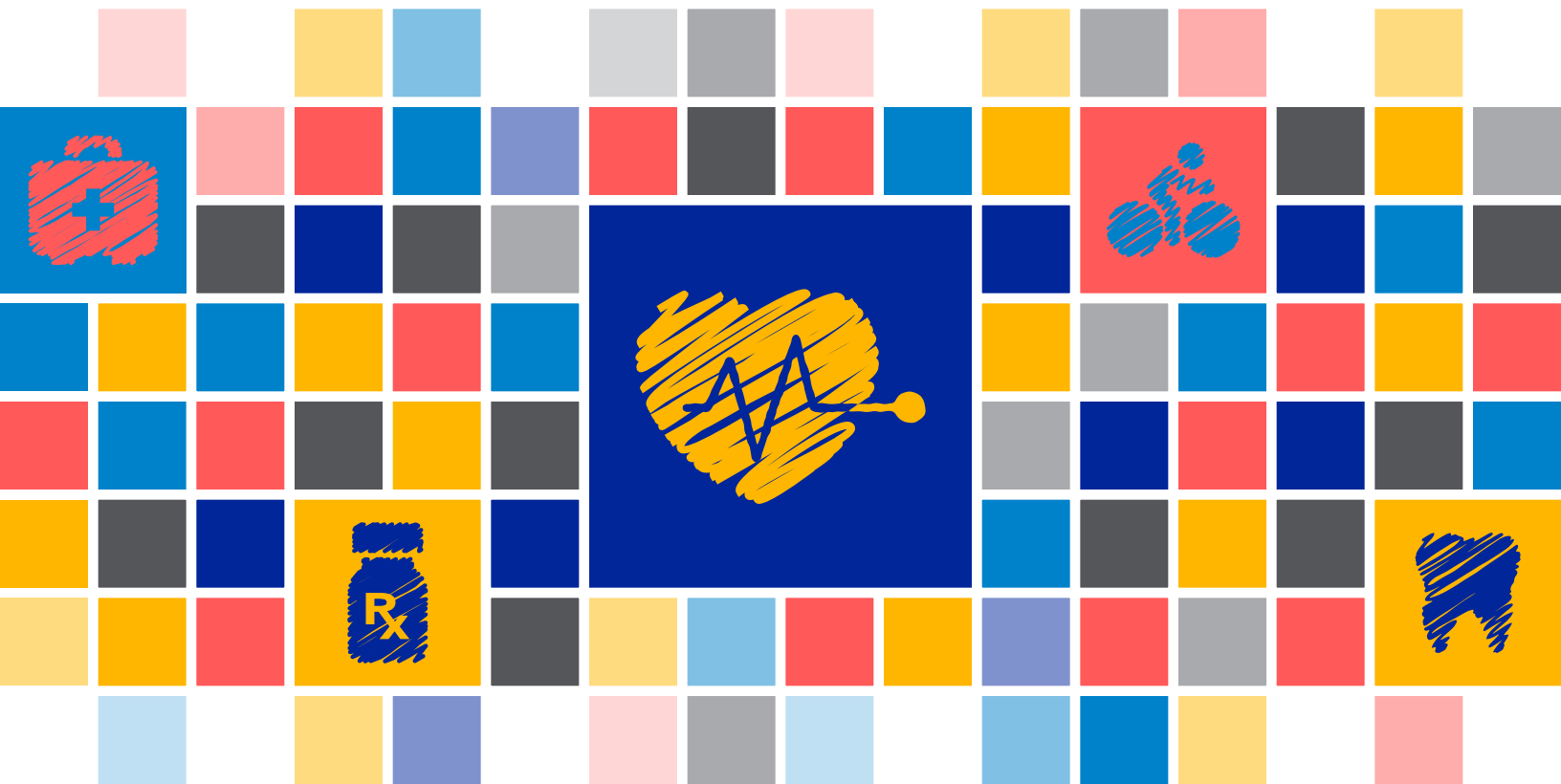


Important
Notices
2019



PERRIS UNION
HIGH SCHOOL DISTRICT

Important Notices

Newborns' and Mothers' Health Protection Act (NMHPA)

Benefits for pregnancy hospital stay (for delivery) for a mother and her newborn generally may not be restricted to less than 48 hours following a vaginal delivery or 96 hours following a cesarean section. Also, any utilization review requirements for inpatient hospital admissions will not apply for this minimum length of stay and early discharge is only permitted if the attending health care provider, in consultation with the mother, decides an earlier discharge is appropriate.

Women's Health and Cancer Rights Act (WHCRA) Annual Notice

Your plan, as required by the Women's Health and Cancer Rights Act of 1998, provides benefits for mastectomy-related services including all stages of reconstruction and surgery to achieve symmetry between the breasts, prostheses, and complications resulting from a mastectomy, including lymphedema. For more information, you should review the Summary Plan Description or call your Plan Administrator at (951) 943-6369 ext. 80283 for more information.

Patient Protections

The medical plan requires the designation of a primary care provider. You have the right to designate any primary care provider who participates in our network and who is available to accept you or your family members. Until you make this designation, the plan will designate one for you. For information on how to select a primary care provider, and for a list of the participating primary care providers, please contact Anthem or Kaiser Customer Service at the phone number on the back of your member ID card.

For children, you may designate a pediatrician as the primary care provider.

You do not need prior authorization from the plan or from any other person (including a primary care provider) in order to obtain access to obstetrical or gynecological care from a health care professional in our network who specializes in obstetrics or gynecology. The health care professional, however, may be required to comply with certain procedures, including obtaining prior authorization for certain services, following a pre-approved treatment plan, or procedures for making referrals. For a list of participating health care professionals who specialize in obstetrics or gynecology, please contact Anthem or Kaiser Customer Service at the phone number on the back of your member ID card.

Networks/Claims/Appeals

The major medical plans described in this booklet have provider networks with Anthem and Kaiser. The listing of provider networks will be available to you automatically and free of charge. A list of network providers can be accessed immediately by using the Internet address found in the Summary of Benefits and Coverage that relates to the Plan. You have a right to appeal denials of claims, and a right to a response within a reasonable amount of time. Claims that are not submitted within a reasonable time may be denied. Please review your Summary Plan Description or contact the Plan Administrator for more details.

COBRA Continuation Coverage

This notice has important information about your right to COBRA continuation coverage, which is a temporary extension of coverage under the Plan. This notice explains COBRA continuation coverage, when it may become available to you and your family, and what you need to do to protect your right to get it. When you become eligible for COBRA, you may also become eligible for other coverage options that may cost less than COBRA continuation coverage.

The right to COBRA continuation coverage was created by federal law, the Consolidated Omnibus Budget Reconciliation Act of 1985 (COBRA). COBRA continuation coverage can become available to you and other members of your family when group health coverage would otherwise end. For more information about your rights and obligations under the Plan and under federal law, you should review the Plan's Summary Plan Description or contact the Plan Administrator.

You may have other options available to you when you lose group health coverage. For example, you may be eligible to buy an individual plan through the Health Insurance Marketplace. By enrolling in coverage through the Marketplace, you may qualify for lower costs on your monthly premiums and lower out-of-pocket costs. Additionally, you may qualify for a 30-day special enrollment period for another group health plan for which you are eligible (such as a spouse's plan), even if that plan generally does not accept late enrollees.

WHAT IS COBRA CONTINUATION COVERAGE?

COBRA continuation coverage is a continuation of Plan coverage when it would otherwise end because of a life event. This is also called a "Qualifying Event." Specific Qualifying Events are listed

Important Notices

later in this notice. After a Qualifying Event, COBRA continuation coverage must be offered to each person who is a “Qualified Beneficiary.” You, your spouse, and your dependent children could become Qualified Beneficiaries if coverage under the Plan is lost because of the Qualifying Event. Under the Plan, Qualified Beneficiaries who elect COBRA continuation coverage must pay for COBRA continuation coverage.

If you are an employee, you will become a Qualified Beneficiary if you lose coverage under the Plan because of the following Qualifying Events:

- Your hours of employment are reduced, or
- Your employment ends for any reason other than your gross misconduct.

If you are the spouse of an employee, you will become a Qualified Beneficiary if you lose your coverage under the Plan because of the following Qualifying Events:

- Your spouse dies;
- Your spouse’s hours of employment are reduced;
- Your spouse’s employment ends for any reason other than his or her gross misconduct;
- Your spouse becomes entitled to Medicare benefits (under Part A, Part B, or both); or,
- You become divorced or legally separated from your spouse.

Your dependent children will become Qualified Beneficiaries if they lose coverage under the Plan because of the following Qualifying Events:

- The parent-employee dies;
- The parent-employee’s employment ends for any reason other than his or her gross misconduct;
- The parent-employee becomes entitled to Medicare benefits (Part A, Part B, or both);
- The parents become divorced or legally separated; or,
- The child stops being eligible for coverage under the Plan as a “dependent child.”

WHEN IS COBRA CONTINUATION COVERAGE AVAILABLE?

The Plan will offer COBRA continuation coverage to Qualified Beneficiaries only after the Plan Administrator has been notified that a Qualifying Event has occurred. The employer must notify the Plan Administrator of the following Qualifying Events:

- The end of employment or reduction of hours of employment;
- Death of the employee; or,
- The employee’s becoming entitled to Medicare benefits (under Part A, Part B, or both).

For all other Qualifying Events (e.g., divorce or legal separation of the employee and spouse, or a dependent child’s losing eligibility for coverage as a dependent child, etc.), you must notify the Plan Administrator within 60 days after the Qualifying Event occurs. You must provide this notice to your employer.

Life insurance, accidental death and dismemberment benefits, and weekly income or long-term disability benefits (if part of the employer’s plan), are not eligible for continuation under COBRA.

NOTICE AND ELECTION PROCEDURES

Each type of notice or election to be provided by a covered employee or a Qualified Beneficiary under this COBRA Continuation Coverage Section must be in writing, must be signed and dated, and must be mailed or hand-delivered to the Plan Administrator, properly addressed, no later than the date specified in the election form, and properly addressed to the Plan Administrator.

Each notice must include all of the following items: the covered employee’s full name, address, phone number and Social Security Number; the full name, address, phone number and Social Security Number of each affected dependent, as well as the dependent’s relationship to the covered employee; a description of the Qualifying Event or disability determination that has occurred; the date the Qualifying Event or disability determination occurred; a copy of the Social Security Administration’s written disability determination, if applicable; and the name of this Plan. The Plan Administrator may establish specific forms that must be used to provide a notice or election.

ELECTION AND ELECTION PERIOD

COBRA continuation coverage may be elected during the period beginning on the date Plan coverage would otherwise terminate due to a Qualifying Event and ending on the later of the following: (1) 60 days after coverage ends due to a Qualifying Event, or (2) 60 days after the notice of the COBRA continuation coverage rights is provided to the Qualified Beneficiary.

If, during the election period, a Qualified Beneficiary waives COBRA continuation coverage rights, the waiver can be revoked at any time before the end of the election period. Revocation of the waiver will be an election of COBRA continuation coverage. However, if a waiver is revoked, coverage need not be provided retroactively (that is, from the date of the loss of coverage until the waiver is revoked). Waivers and revocations of waivers are considered to be made on the date they are sent to the employer or Plan Administrator.

Important Notices

HOW IS COBRA CONTINUATION COVERAGE PROVIDED?

Once the Plan Administrator receives notice that a Qualifying Event has occurred, COBRA continuation coverage will be offered to each of the Qualified Beneficiaries. Each Qualified Beneficiary will have an independent right to elect COBRA continuation coverage. Covered employees may elect COBRA continuation coverage on behalf of their spouses, and parents may elect COBRA continuation on behalf of their dependent children.

COBRA continuation coverage is a temporary continuation of coverage that generally lasts for 18 months due to employment termination or reduction of hours of work. Certain Qualifying Events, or a second Qualifying Event during the initial period of coverage, may permit a beneficiary to receive a maximum of 36 months of coverage.

DISABILITY EXTENSION OF THE 18-MONTH PERIOD OF COBRA CONTINUATION COVERAGE

If you or anyone in your family covered under the Plan is determined by Social Security to be disabled and you notify the Plan Administrator in a timely fashion, you and your entire family may be entitled to get up to an additional 11 months of COBRA continuation coverage, for a maximum of 29 months. This disability would have to have started at some time before the 60th day of COBRA continuation coverage and must last at least until the end of the 18-month period of COBRA continuation coverage.

SECOND QUALIFYING EVENT EXTENSION OF 18-MONTH PERIOD OF COBRA CONTINUATION COVERAGE

If your family experiences another Qualifying Event during the 18 months of COBRA continuation of coverage, the spouse and dependent children in your family can get up to 18 additional months of COBRA continuation of coverage, for a maximum of 36 months, if the Plan is properly notified about the second Qualifying Event. This extension may be available to the spouse and any dependent children receiving COBRA continuation of coverage if the employee or former employee dies; becomes entitled to Medicare (Part A, Part B, or both); gets divorced or legally separated; or if the dependent child stops being eligible under the Plan as a dependent child. This extension is only available if the second Qualifying Event would have caused the spouse or the dependent child to lose coverage under the Plan had the first Qualifying Event not occurred.

OTHER OPTIONS BESIDES COBRA CONTINUATION COVERAGE

Instead of enrolling in COBRA continuation coverage, there may be other coverage options for you and your family through the

Health Insurance Marketplace, Medicaid, or other group health plan coverage options (such as a spouse's plan) through what is called a "special enrollment period." Some of these options may cost less than COBRA continuation coverage. You can learn more about many of these options at www.healthcare.gov.

IF YOU HAVE QUESTIONS

For more information about your rights under the Employee Retirement Income Security Act (ERISA), including COBRA, the Patient Protection and Affordable Care Act, and other laws affecting group health plans subject to ERISA, contact the nearest Regional or District Office of the U.S. Department of Labor's Employee Benefits Security Administration (EBSA) in your area or visit www.dol.gov/ebsa. (Address and phone numbers of Regional and District EBSA Offices are available through EBSA's website.)

For more information about the Marketplace, visit www.healthcare.gov.

The U.S. Department of Health and Human Services (HHS), through the Centers for Medicare & Medicaid Services (CMS), has jurisdiction with respect to the COBRA continuation coverage requirements of the Public Health Service Act (PHSA) that apply to state and local government employers, including counties, municipalities, public school districts, and the group health plans that they sponsor (Public Sector COBRA). COBRA can be a daunting and complex area of federal law. If you have any questions or issues regarding Public Sector COBRA, you may contact the Plan Administrator or email HHS at phig@cms.hhs.gov.

KEEP YOUR PLAN INFORMED OF ADDRESS CHANGES

To protect your family's rights, let the Plan Administrator know about any changes in the addresses of family members. You should also keep a copy, for your records, of any notices you send to the Plan Administrator.

EFFECTIVE DATE OF COVERAGE

COBRA continuation coverage, if elected within the period allowed for such election, is effective retroactively to the date coverage would otherwise have terminated due to the Qualifying Event, and the Qualified Beneficiary will be charged for coverage in this retroactive period.

COST OF CONTINUATION COVERAGE

The cost of COBRA continuation coverage will not exceed 102% of the Plan's full cost of coverage during the same period for similarly situated non-COBRA beneficiaries to whom a Qualifying Event has

Important Notices

not occurred. The “full cost” includes any part of the cost which is paid by the employer for non-COBRA beneficiaries.

The initial payment must be made within 45 days after the date of the COBRA election by the Qualified Beneficiary. Payment must cover the period of coverage from the date of the COBRA election retroactive to the date of loss of coverage due to the Qualifying Event (or date a COBRA waiver was revoked, if applicable). The first and subsequent payments must be submitted and made payable to the Plan Administrator or COBRA Administrator. Payments for successive periods of coverage are due on the first of each month thereafter, with a 30-day grace period allowed for payment. Where an employee organization or any other entity that provides Plan benefits on behalf of the Plan Administrator permits a billing grace period greater than the 30 days stated above, such period shall apply in lieu of the 30 days. Payment is considered to be made on the date it is sent to the Plan or Plan Administrator.

The Plan will allow the payment for COBRA continuation coverage to be made in monthly installments, but the Plan can also allow for payment at other intervals. The Plan is not obligated to send monthly premium notices.

The Plan will notify the Qualified Beneficiary in writing, of any termination of COBRA coverage based on the criteria stated in this Section that occurs prior to the end of the Qualified Beneficiary’s applicable maximum coverage period. Notice will be given within 30 days of the Plan’s decision to terminate.

Such notice shall include the reason that continuation coverage has terminated earlier than the end of the maximum coverage period for such Qualifying Event and the date of termination of continuation coverage.

See the Summary Plan Description or contact the Plan Administrator for more information.

Special Enrollment Rights Notice

CHANGES TO YOUR HEALTH PLAN ELECTIONS

Once you make your benefits elections, they cannot be changed until the next Open Enrollment. Open Enrollment is held once a year.

If you are declining enrollment for yourself or your dependents (including your spouse) because of other health insurance or group health plan coverage, you may be able to enroll yourself and your dependents in this plan if there is a loss of other coverage. However, you must request enrollment no later than 30 days after that other coverage ends.

If you declined coverage while Medicaid or the Children’s Health Insurance Program (CHIP) is in effect, you may be able to enroll yourself and / or your dependents in this plan if you or your dependents lose eligibility for that other coverage. However, you must request enrollment no later than 60 days after Medicaid or CHIP coverage ends.

If you or your dependents become eligible for Medicaid or CHIP premium assistance, you may be able to enroll yourself and / or your dependents into this plan. However, you must request enrollment no later than 60 days after the determination for eligibility for such assistance.

If you have a change in family status such as a new dependent resulting from marriage, birth, adoption or placement for adoption, divorce (including legal separation and annulment), death or Qualified Medical Child Support Order, you may be able to enroll yourself and / or your dependents. However, you must request enrollment no later than 30 days after the marriage, birth, adoption or placement for adoption or divorce (including legal separation and annulment).

For information about Special Enrollment Rights, please contact:

Brenna Dorado
Risk Management
(951) 943-6369 ext. 80283

Important Notices

Medicare Part D – Important Notice About Your Prescription Drug Coverage and Medicare

Please read this notice carefully and keep it where you can find it. This notice has information about your current prescription drug coverage with Perris Union High School District and about your options under Medicare's prescription drug coverage. This information can help you decide whether or not you want to join a Medicare drug plan. If you are considering joining, you should compare your current coverage, including which drugs are covered at what cost, with the coverage and costs of the plans offering Medicare prescription drug coverage in your area. Information about where you can get help to make decisions about your prescription drug coverage is at the end of this notice.

There are two important things you need to know about your current coverage and Medicare's prescription drug coverage:

- **Medicare prescription drug coverage became available in 2006 to everyone with Medicare. You can get this coverage if you join a Medicare Prescription Drug Plan or join a Medicare Advantage Plan (like an HMO or PPO) that offers prescription drug coverage. All Medicare drug plans provide at least a standard level of coverage set by Medicare. Some plans may also offer more coverage for a higher monthly premium.**
- **Perris Union High School District/Express Scripts/Kaiser has determined that the prescription drug coverage offered by Perris Union High School District is, on average for all plan participants, expected to pay out as much as standard Medicare prescription drug coverage pays and is therefore considered Creditable Coverage. Because your existing coverage is Creditable Coverage, you can keep this coverage and not pay a higher premium (a penalty) if you later decide to join a Medicare drug plan.**

WHEN CAN YOU JOIN A MEDICARE DRUG PLAN?

You can join a Medicare drug plan when you first become eligible for Medicare and each year from October 15th to December 7th.

However, if you lose your current creditable prescription drug coverage, through no fault of your own, you will also be eligible for a two (2) month Special Enrollment Period (SEP) to join a Medicare drug plan.

WHAT HAPPENS TO YOUR CURRENT COVERAGE IF YOU DECIDE TO JOIN A MEDICARE DRUG PLAN?

If you decide to join a Medicare drug plan, your current Perris Union High School District coverage will not be affected. If you keep this coverage and elect Medicare, the Perris Union High School District coverage will coordinate with Part D coverage.

If you do decide to join a Medicare drug plan and drop your current Perris Union High School District coverage, be aware that you and your dependents will be able to get this coverage back.

WHEN WILL YOU PAY A HIGHER PREMIUM (PENALTY) TO JOIN A MEDICARE DRUG PLAN?

You should also know that if you drop or lose your current coverage with Perris Union High School District and don't join a Medicare drug plan within 63 continuous days after your current coverage ends, you may pay a higher premium (a penalty) to join a Medicare drug plan later.

If you go 63 continuous days or longer without creditable prescription drug coverage, your monthly premium may go up by at least 1% of the Medicare base beneficiary premium per month for every month that you did not have that coverage. For example, if you go nineteen months without Creditable Coverage, your premium may consistently be at least 19% higher than the Medicare base beneficiary premium. You may have to pay this higher premium (i.e., a penalty) as long as you have Medicare prescription drug coverage. In addition, you may have to wait until the following October to join.

FOR MORE INFORMATION ABOUT THIS NOTICE OR YOUR CURRENT PRESCRIPTION DRUG COVERAGE

Contact the person listed below for further information. NOTE: You will get this notice each year. You will also get it before the next period you can join a Medicare drug plan, and if this coverage through Perris Union High School District changes. You also may request a copy of this notice at any time.

FOR MORE INFORMATION ABOUT YOUR OPTIONS UNDER MEDICARE PRESCRIPTION DRUG COVERAGE

More detailed information about Medicare plans that offer prescription drug coverage is in the "Medicare & You" handbook. You will get a copy of the handbook in the mail every year from Medicare. You may also be contacted directly by Medicare drug plans.

Important Notices

FOR MORE INFORMATION ABOUT MEDICARE PRESCRIPTION DRUG COVERAGE

- Visit www.medicare.gov
- Call your State Health Insurance Assistance Program (see your copy of the Medicare & You handbook for their telephone number) for personalized help.
- Call 800.MEDICARE (800.633.4227). TTY users should call 877.486.2048.

If you have limited income and resources, extra help paying for Medicare prescription drug coverage is available. For information about this extra help, visit Social Security on the web at www.socialsecurity.gov, or call them at 800.772.1213 (TTY 800.325.0778).

REMEMBER

Keep this Creditable Coverage notice. If you decide to join one of the Medicare drug plans, you may be required to provide a copy of this notice when you join to show whether or not you have maintained Creditable Coverage and, therefore, whether or not you are required to pay a higher premium (a penalty).

Date: May 2019

Name of Entity / Sender: Perris Union High School District

Contact: Brenna Dorado

Address: 155 E. 4th Street
Perris, CA 92570

Phone: (951) 943-6369 ext. 80283

Availability of Health Insurance Portability and Accountability Act (HIPAA) Notice of Privacy Practices

Perris Union High School District's Anthem and Kaiser Plans maintain a Notice of Privacy Practices that provides information to individuals whose protected health information (PHI) will be used or maintained by the Plan. If you would like a copy of the Plan's Notice of Privacy Practices, please contact Brenna Dorado (951) 943-6369 ext. 80283.

Important Notices

Important Notice Regarding Wellness Information

The REEP Wellness Program is a voluntary program available to employees who participate in Anthem and Kaiser and is subject to federal law including the Americans with Disabilities Act and the Genetic Information Nondiscrimination Act.

If you choose to participate, you may be asked to complete a voluntary health risk assessment that asks questions about your health-related activities and behaviors and whether you have or had certain medical conditions. You may also be asked to complete a voluntary biometric screening which includes cholesterol, glucose, blood pressure, BMI and Body Fat.

The information gathered from your health risk assessment and/or biometric screening will be used to provide you with information to help you understand your current health, potential risks, and may also be used to offer you services through the wellness program. You are also encouraged to share your results or concerns with your own doctor.

The law requires us to maintain the privacy and security of your personally identifiable health information. Although the wellness program and Perris Union High School District may use aggregate, non-employee specific information to design a program to address health risks in the workplace, your personal identifiable information will never be disclosed publicly or to your employer. Medical information that personally identifies you in connection with the wellness program will not be disclosed to your supervisors or managers and will never be used to make decisions regarding your employment. Anyone (e.g., a registered nurse, a doctor, health coach, etc.) who receives information about you for purposes of providing you services as part of the wellness program will abide by the same confidentiality requirements.

All medical information obtained through the wellness program will be confidential.

If you have any questions or concerns, please contact Brenna Dorado at Perris Union High School District at (951) 943-6369 ext. 80283.

Important Notices

Health Insurance Marketplace Coverage Options and Your Health Coverage

PART A: GENERAL INFORMATION

This notice provides you with information about Perris Union High School District in the event you wish to apply for coverage on the Health Insurance Marketplace. All the information you need from Human Resources is listed in this notice. If you wish to have someone assist you in the application process or have questions about subsidies that you may be eligible to receive, (for California residents only) you can contact KeenanDirect at 855.653.3626 or at www.KeenanDirect.com, or (for everyone) contact the Health Insurance Marketplace directly at www.Healthcare.gov.

WHAT IS THE HEALTH INSURANCE MARKETPLACE?

The Marketplace offers “one-stop shopping” to find and compare private health insurance options. You may also be eligible for a tax credit that lowers your monthly premium right away. Open Enrollment for health insurance coverage through Covered California begins October 15, 2018 and ends on January 15, 2019. Open Enrollment for most other states will close on December 15, 2018.

CAN I SAVE MONEY ON MY HEALTH INSURANCE PREMIUMS IN THE MARKETPLACE?

You may qualify to save money and lower your monthly premium, but only if your employer does not offer you coverage, offers medical coverage that is not “Affordable,” or does not provide “Minimum Value.” If the lowest cost plan from your employer that would cover you (and not any other members of your family) is more than 9.56% (for 2018) and 9.86% (for 2019) of your household income for the year, then that coverage is not Affordable. Moreover, if the medical coverage offered covers less than 60% of the benefits costs, then the plan does not provide Minimum Value.

DOES EMPLOYER HEALTH COVERAGE AFFECT ELIGIBILITY FOR PREMIUM SAVINGS THROUGH THE MARKETPLACE?

Yes. If you have an offer of medical coverage from your employer that is both Affordable and provides Minimum Value, you will not be eligible for a tax credit through the Marketplace and may wish to enroll in your employer’s medical plan.

Note: If you purchase a health plan through the Marketplace instead of accepting health coverage offered by your employer, then you may lose the employer contribution (if any) to the employer-offered medical coverage. Also, this employer contribution, as well as your employee contribution to employer-offered coverage, is often excluded from income for federal and state income tax purposes. Your payments for coverage through the Marketplace are made on an after-tax basis.

PART B: EXCHANGE APPLICATION INFORMATION

In the event you wish to apply for coverage on the Exchange, all the information you need from Human Resources is listed below. If you are located in California and wish to have someone assist you in the application process or have questions about subsidies that you may be eligible to receive, you can contact KeenanDirect at 855.653.3626 or at www.KeenanDirect.com.

3. Employer name Perris Union High School District	4. Employer Identification Number (EIN) 95-6000929	
5. Employer address 155 E. 4 th Street	6. Employer phone number (951) 943-6369 ext. 80283	
7. City Perris	8. State CA	9. ZIP code 92570
10. Who can we contact about employee health coverage at this job? Brenna Dorado, Risk Management		
11. Phone number (if different from above)	12. Email address Brenna.Dorado@puhsd.org	

Important Notices

Premium Assistance Under Medicaid and the Children's Health Insurance Program (CHIP)

If you or your children are eligible for Medicaid or CHIP and you're eligible for health coverage from your employer, your State may have a premium assistance program that can help pay for coverage, using funds from their Medicaid or CHIP programs. If you or your children aren't eligible for Medicaid or CHIP, you won't be eligible for these premium assistance programs, but you may be able to buy individual insurance coverage through the Health Insurance Marketplace. For more information, visit www.healthcare.gov.

If you or your dependents are already enrolled in Medicaid or CHIP and you live in a State listed below, contact your State Medicaid or CHIP office to find out if premium assistance is available.

If you or your dependents are NOT currently enrolled in Medicaid or CHIP, and you think you or any of your dependents might be eligible for either of these programs, contact your State Medicaid or CHIP office or dial 877.KIDS.NOW or www.insurekidsnow.gov to find out how to apply. If you qualify, ask your State if it has a program that might help you pay the premiums for an employer-sponsored plan.

If you or your dependents are eligible for premium assistance under Medicaid or CHIP, as well as eligible under your employer plan, your employer must allow you to enroll in your employer plan if you aren't already enrolled. This is called a "special enrollment" opportunity, and you must request coverage within 60 days of being determined eligible for premium assistance. If you have questions about enrolling in your employer plan, contact the Department of Labor at www.askebsa.dol.gov or call 866.444.EBSA (3272).

If you live in one of the following States, you may be eligible for assistance paying your employer health plan premiums. The following list of states is current as of January 31, 2018. Contact your State for more information on eligibility.

ALABAMA – Medicaid
Website: <http://myalhipp.com/>
Phone: 855.692.5447

ALASKA – Medicaid
The AK Health Insurance Premium Payment Program
Website: <http://myakhipp.com/>
Phone: 866.251.4861
Email: CustomerService@MyAKHIPP.com
Medicaid Eligibility:
<http://dhss.alaska.gov/dpa/Pages/medicaid/default.aspx>

ARKANSAS – Medicaid
Website: <http://myarhipp.com/>
Phone: 855.MyARHIPP (855.692.7447)

COLORADO – Health First Colorado (Colorado's Medicaid Program) & Child Health Plan Plus (CHP+)
Health First Colorado Website:
<https://www.healthfirstcolorado.com/>
Health First Colorado Member Contact Center:
800.221.3943/ State Relay 711
CHP+: <https://colorado.gov/HCPF/Child-Health-Plan-Plus>
CHP+ Customer Service: 800.359.1991/ State Relay 711

FLORIDA – Medicaid
Website: <http://flmedicaidprecovery.com/hipp/>
Phone: 877.357.3268

GEORGIA – Medicaid
Website: <http://dch.georgia.gov/medicaid>
Click on Health Insurance Premium Payment (HIPP)
Phone: 404.656.4507

INDIANA – Medicaid
Healthy Indiana Plan for low-income adults 19-64
Website: <http://www.in.gov/fssa/hip/>
Phone: 877.438.4479
All other Medicaid
Website: <http://www.indianamedicaid.com>
Phone 800.403.0864

IOWA – Medicaid
Website:
<http://dhs.iowa.gov/ime/members/medicaid-a-to-z/hipp>
Phone: 888.346.9562

KANSAS – Medicaid
Website: <http://www.kdheks.gov/hcf/>
Phone: 785.296.3512

KENTUCKY – Medicaid
Website: <http://chfs.ky.gov/agencies/dms>
Phone: 800.635.2570

LOUISIANA – Medicaid
Website: <http://dhh.louisiana.gov/index.cfm/subhome/1/n/331>
Phone: 888.695.2447

MAINE – Medicaid
Website: <http://www.maine.gov/dhhs/ofi/public-assistance/index.html>
Phone: 800.442.6003
TTY: Maine relay 711

MASSACHUSETTS – Medicaid and CHIP
Website:
<http://www.mass.gov/eohhs/gov/departments/masshealth/>
Phone: 800.862.4840

MINNESOTA – Medicaid
Website: <http://mn.gov/dhs/people-we-serve/seniors/health-care/health-care-programs/programs-and-services/medical-assistance.jsp> | Phone: 800.657.3739

MISSOURI – Medicaid
Website:
<https://www.dss.mo.gov/mhd/participants/pages/hipp.htm>
Phone: 573.751.2005

MONTANA – Medicaid
Website: <http://dphhs.mt.gov/MontanaHealthcarePrograms/HIPP>
Phone: 800.694.3084

Important Notices

NEBRASKA – Medicaid

Website: <http://www.ACCESSNebraska.ne.gov>
Phone: 855.632.7633
Lincoln: 402.473.7000
Omaha: 402.595.1178

NEVADA – Medicaid

Medicaid Website: <https://dwss.nv.gov/>
Medicaid Phone: 800.992.0900

NEW HAMPSHIRE – Medicaid

Website: <http://www.dhhs.nh.gov/oii/documents/hippapp.pdf>
Phone: 603.271.5218
NH Medicaid Service Center Hotline: 888.901.4999

NEW JERSEY – Medicaid and CHIP

Medicaid Website:
<http://www.state.nj.us/humanservices/dmahs/clients/medicaid/>
Medicaid Phone: 609.631.2392
CHIP Website: <http://www.njfamilycare.org/index.html>
CHIP Phone: 800.701.0710

NEW YORK – Medicaid

Website: https://www.health.ny.gov/health_care/medicaid/
Phone: 800.541.2831

NORTH CAROLINA – Medicaid

Website: <https://dma.ncdhhs.gov/>
Phone: 919.855.4100

NORTH DAKOTA – Medicaid

Website: <http://www.nd.gov/dhs/services/medicalserv/medicaid/>
Phone: 844.854.4825

OKLAHOMA – Medicaid and CHIP

Website: <http://www.insureoklahoma.org>
Phone: 888.365.3742

OREGON – Medicaid

Websites: <http://healthcare.oregon.gov/Pages/index.aspx>
<http://www.oregonhealthcare.gov/index-es.html>
Phone: 800.699.9075

PENNSYLVANIA – Medicaid

Website:
<http://www.dhs.pa.gov/provider/medicalassistance/healthinsurancemypremiumpaymenthippprogram/index.htm>
Phone: 800.692.7462

RHODE ISLAND – Medicaid

Website: <http://www.eohhs.ri.gov/>
Phone: 855.697.4347

SOUTH CAROLINA – Medicaid

Website: <https://www.scdhhs.gov>
Phone: 888.549.0820

SOUTH DAKOTA - Medicaid

Website: <http://dss.sd.gov>
Phone: 888.828.0059

TEXAS – Medicaid

Website: <http://gethipptexas.com/>
Phone: 800.440.0493

UTAH – Medicaid and CHIP

Medicaid Website: <https://medicaid.utah.gov/>
CHIP Website: <http://health.utah.gov/chip>
Phone: 877.543.7669

VERMONT– Medicaid

Website: <http://www.greenmountaincare.org/>
Phone: 800.250.8427

VIRGINIA – Medicaid and CHIP

Medicaid Website:
http://www.coverva.org/programs_premium_assistance.cfm
Medicaid Phone: 800.432.5924
CHIP Website:
http://www.coverva.org/programs_premium_assistance.cfm
CHIP Phone: 855.242.8282

WASHINGTON – Medicaid

Website: <http://www.hca.wa.gov/free-or-low-cost-health-care/program-administration/premium-payment-program>
Phone: 800.562.3022 ext. 15473

WEST VIRGINIA – Medicaid

Website: <http://mywvhipp.com/>
Toll-free phone: 855.MyWVHIPP (855.699.8447)

WISCONSIN – Medicaid and CHIP

Website:
<https://www.dhs.wisconsin.gov/publications/p1/p10095.pdf>
Phone: 800.362.3002

WYOMING – Medicaid

Website: <https://wyequalitycare.acs-inc.com/>
Phone: 307.777.7531

To see if any other states have added a premium assistance program since January 31, 2018, or for more information on special enrollment rights, contact either:

U.S. Department of Labor

Employee Benefits Security Administration
www.dol.gov/agencies/ebsa
866.444.EBSA (3272)

U.S. Department of Health and Human Services

Centers for Medicare & Medicaid Services
www.cms.hhs.gov
877.267.2323, Menu Option 4, Ext. 61565