

# LIST OF MATERIALS YOU WILL NEED

**Paper** – Cartridge paper is good for practicing on, but not great if you are producing something that you spend lots of time on. You can also use hot press watercolour paper. If you would like to use better quality paper, then I recommend Pergamenata. Below is a link to a supplier in the US if you cannot purchase this locally  
[https://www.johnnealbooks.com/prod\\_detail\\_list/s?keyword=pergamenata](https://www.johnnealbooks.com/prod_detail_list/s?keyword=pergamenata)

**Pencil** – I prefer a mechanical pencil with 2B leads, but a regular sharp pencil will do

**Eraser** – a clean white eraser or a kneadable one can be purchased from art or office supply stores

**Ruler** – a regular 30cm ruler is perfect

**Paint** – either watercolours or gouache.

I like to use Winsor & Newton, but these can be expensive for beginners as they are sold as individual colours. You can purchase cheaper sets for practicing on, but they may not come with the exact colours that I am using and will give you slightly different results.

For this project I am using the following colours, White, black, cobalt blue, cadmium red, golden yellow, alizarin crimson, brilliant green, gold

**Brushes** – sable brushes will give you the best result, but if you do not have them, just make sure that they come to a nice point. Synthetic hair brushes are much more affordable but will not last as long. You will need about a size two for the larger areas and a triple zero for the fine lines.

**An old china plate or paint palette**

Ceramic plates or palettes work better than plastic

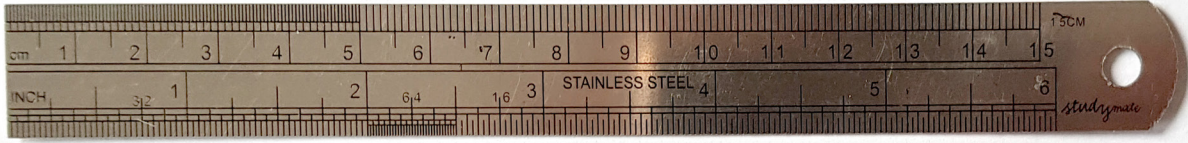
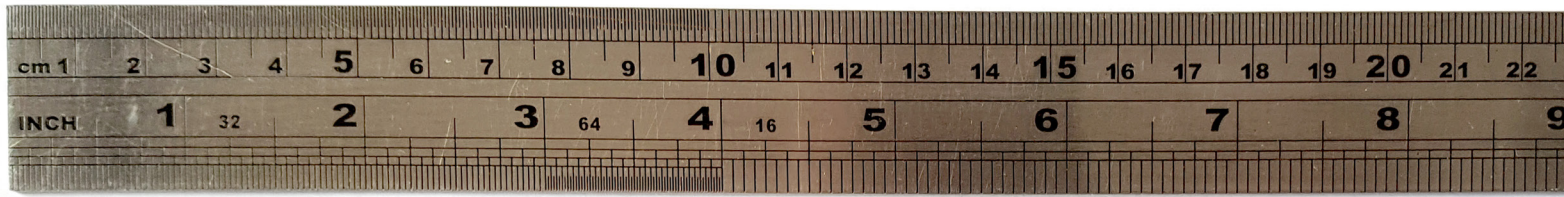
**Jar with water**

**Some paper towel**



EARTHWISDOM

# My favourite equipment



steel rulers



set square

soft kneadable eraser



compass

mechanical  
eraser

mechanical  
pencils

## Brushes

larger brush for filling in big sections of colour

general painting brush

details brush

fine liner, for painting outlines and long straight lines



## Nibs

Good for using with ink or watered down gouache to create fine lines. The finer the tip on the nib, the finer the line. I use the larger nib for outlines on borders or filling in areas.

