

**QUESTIONING
BRAZILIAN
LANDSCAPES**

**This Atlas aims to raise questions
rather than answering them.**

4 - 5

**Critical Cartography Through
Intentional Re/Misuse**

*Indigenous Communities
and COVID-19*

6 - 9

Collecting & Mapping

*Trash Bins in
Parque Jardim das Perdizes*

10 - 13

Selective Digitization

*Comparison of Urban Densities in Analog Map
and Today's Satellite Image*

14 - 15

Multispectral Satellite Imagery

Urbanization of Sao Paulo City's Region

Indigenous Communities and COVID-19

The map aims to explore how widespread COVID-19 infections are in indigenous communities in Brazil. This data shows that the intersection of these parameters is not often shared. I wonder if in April, the pandemic was not widespread or if COVID-19 infections data collection is not as available in indigenous communities.

Location: Brazil
Time: April 2020



SOURCES:
IBGE Mapas
Dagnino, Ricardo; Freitas, Marcos., 2020, "Coronavírus (Covid-19) nos municípios do Brasil.", <https://doi.org/10.7910/DVN/RTAZZG>, Harvard Dataverse, V5

Trash Bins in *Parque Jardim das Perdizes*

The Jardim das Perdizes Park is known for its cleanness and well-maintained amenities. The map visualizes the quantity and frequency of trash bins around the park. I question if other neighborhoods have the same care considering that most visitors are from mid-and high-income families.

*Location: Sao Paulo, Brazil
Time: February 5, 2021*

Filter by title

View	Delete	Edit	Title	Created At	Location	Quantity per location	Photo
			c29850d3-e893-4738-...	5th Feb, 2021	-23.520485, -46.681401	2	
			d3372504-82fc-4cd3-...	5th Feb, 2021	-23.520721, -46.681399	6	
			2c04f791-37eb-4c9a-...	5th Feb, 2021	-23.52105, -46.681506	4	
			a8d6d553-f229-49a9-...	5th Feb, 2021	-23.521147, -46.681465	2	
			70d94815-8aeb-447c-...	5th Feb, 2021	-23.521386, -46.681415	10	
			8a572d08-7bf4-4e29-...	5th Feb, 2021	-23.521383, -46.681539	4	
			f4d6603e-2789-42ea-...	5th Feb, 2021	-23.52024, -46.682976	2	
			af008f76-1b73-4694-9...	5th Feb, 2021	-23.519944, -46.683098	2	
			dd9d8bba-d8e2-4cf1-...	5th Feb, 2021	-23.519721, -46.683223	2	
			578a59e3-4082-487b-...	5th Feb, 2021	-23.519074, -46.683285	2	
			28d24895-a65b-4d27-...	5th Feb, 2021	-23.518511, -46.683172	2	
			f2a82313-dc15-425b-...	5th Feb, 2021	-23.518091, -46.683316	2	
			cd0a2076-346c-4c8a-...	5th Feb, 2021	-23.518165, -46.682742	2	
			20e9444a-9a02-403b-...	5th Feb, 2021	-23.521189, -46.68277	2	
			acbfecf6-6767-41ac-8...	5th Feb, 2021	-23.520736, -46.682866	2	
			f70beb21-8d8c-4d96-...	5th Feb, 2021	-23.520235, -46.683089	2	
			d750678b-3745-45a8-...	5th Feb, 2021	-23.519875, -46.683173	2	
			37e3f1fe-ef30-41ce-8...	5th Feb, 2021	-23.5199, -46.682932	2	
			86b15f1b-bb6d-4d92-...	5th Feb, 2021	-23.51957, -46.683493	1	
			819c00f7-5d84-4a5f-a...	5th Feb, 2021	-23.519715, -46.68353	1	



Number of bins per location

- 1
- 2
- 4
- 6
- 10

Bin Types

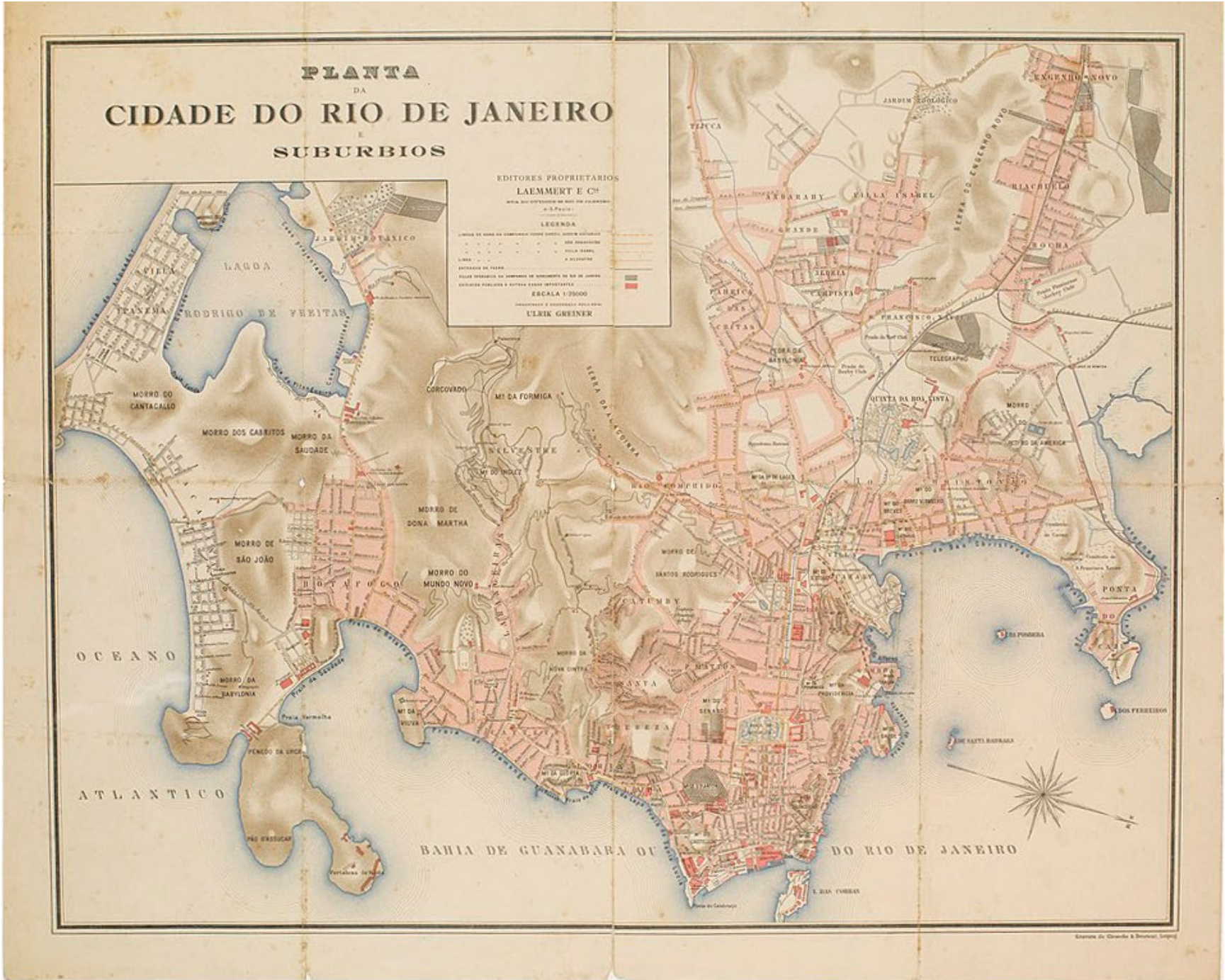
- Common
- Recycling
- + Temporary



Comparison of Urban Densities in Analog Map and Today's Satellite Image

Comparing the analog mapping from Greiner Ulrik and today's Google Satellite image creates visibility friction. The 1892 map traces the "formal" urban densities composed of the mid-and high-income population. However, it fails to acknowledge the displaced communities pushed towards the Rio de Janeiro hills.

Location: Rio de Janeiro, Brazil
Time: 1892 & 2021





Urban Density from "Planta da Cidade do Rio de Janeiro e Suburbio," 1892



0 1 2 km

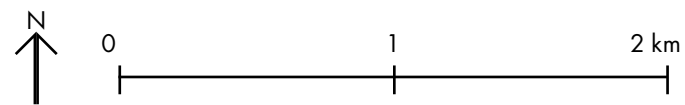
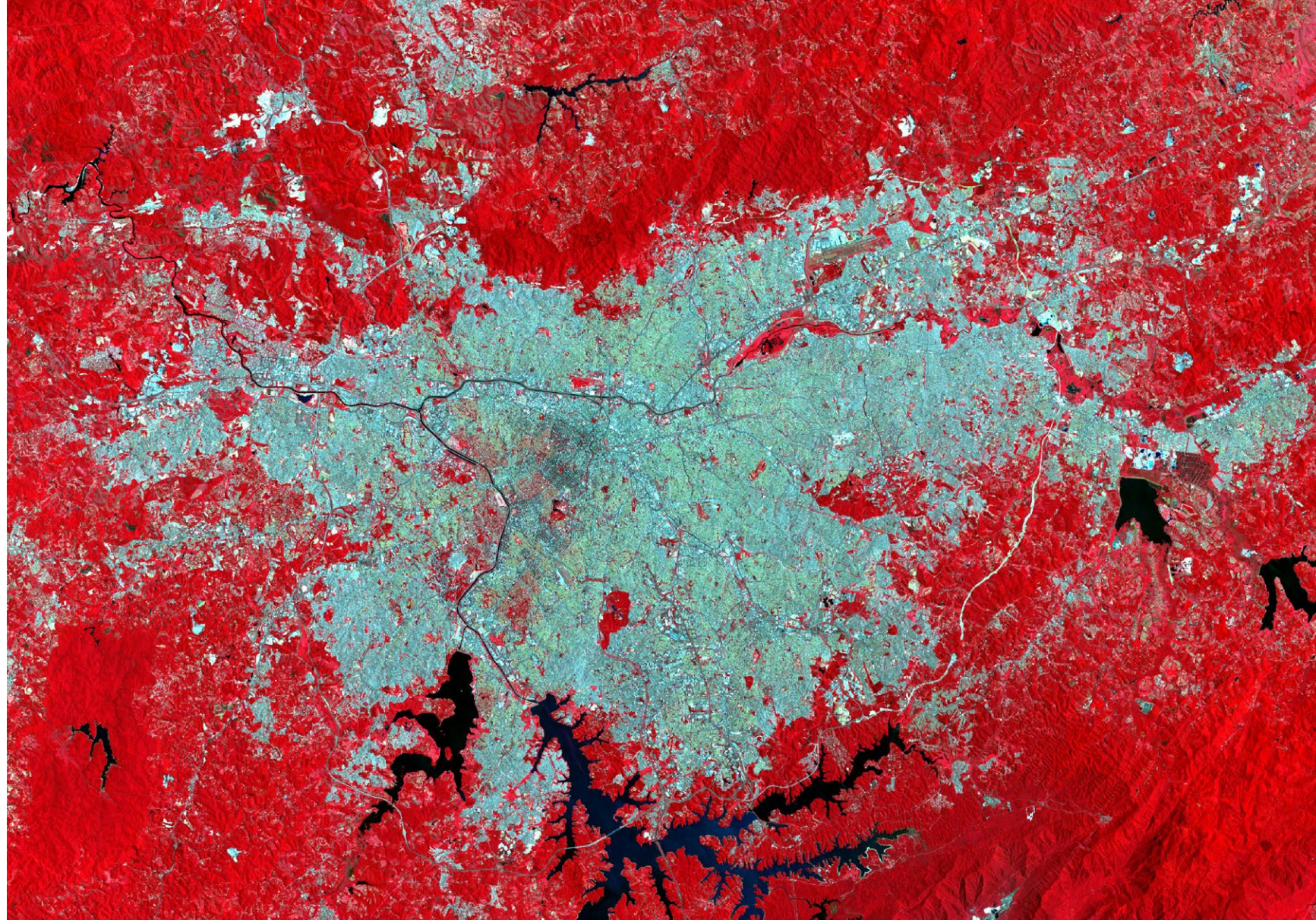
WGS84/Pseudo-Mercator
Google Satellite
Greiner, Ulrik. Planta da Cidade do Rio de Janeiro e Suburbios. 1892. Museu Paulista, Sao Paulo.

Urbanization of Sao Paulo City's Region

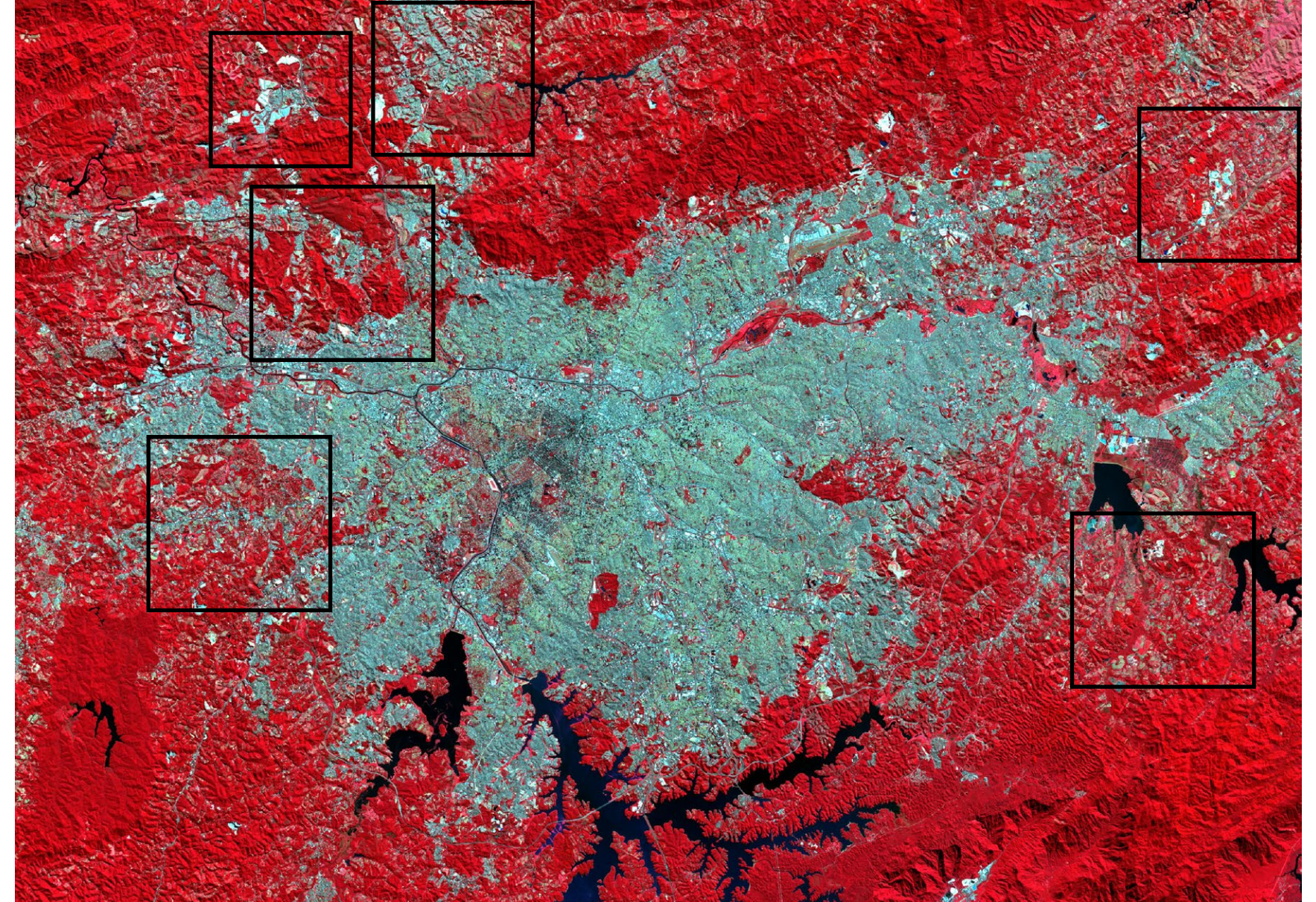
Through the creation of false color composites, the maps analyze the change in population densities around the Sao Paulo city area. The maps seem to indicate subtle changes on the edges of the metropolitan area, specially towards the northern edge.

*Location: Sao Paulo, Brazil
Time: 2014 & 2020*

FEBRUARY 8TH, 2014



MAY 31ST, 2020



WGS 84 UTM ZONE 22N

- NEW DEVELOPMENT
- GREEN AREA
- URBAN AREA