

Disconnected Spaces, Saida's Historic Seafront

Ziad Jamaledine

TRAVEL: Beirut/Saida, Lebanon

DATES: July 21 to August 11

PARTNER :

- SAIDA'S OBSERVATORY FOR SOCIAL IMPACT (SOSI)





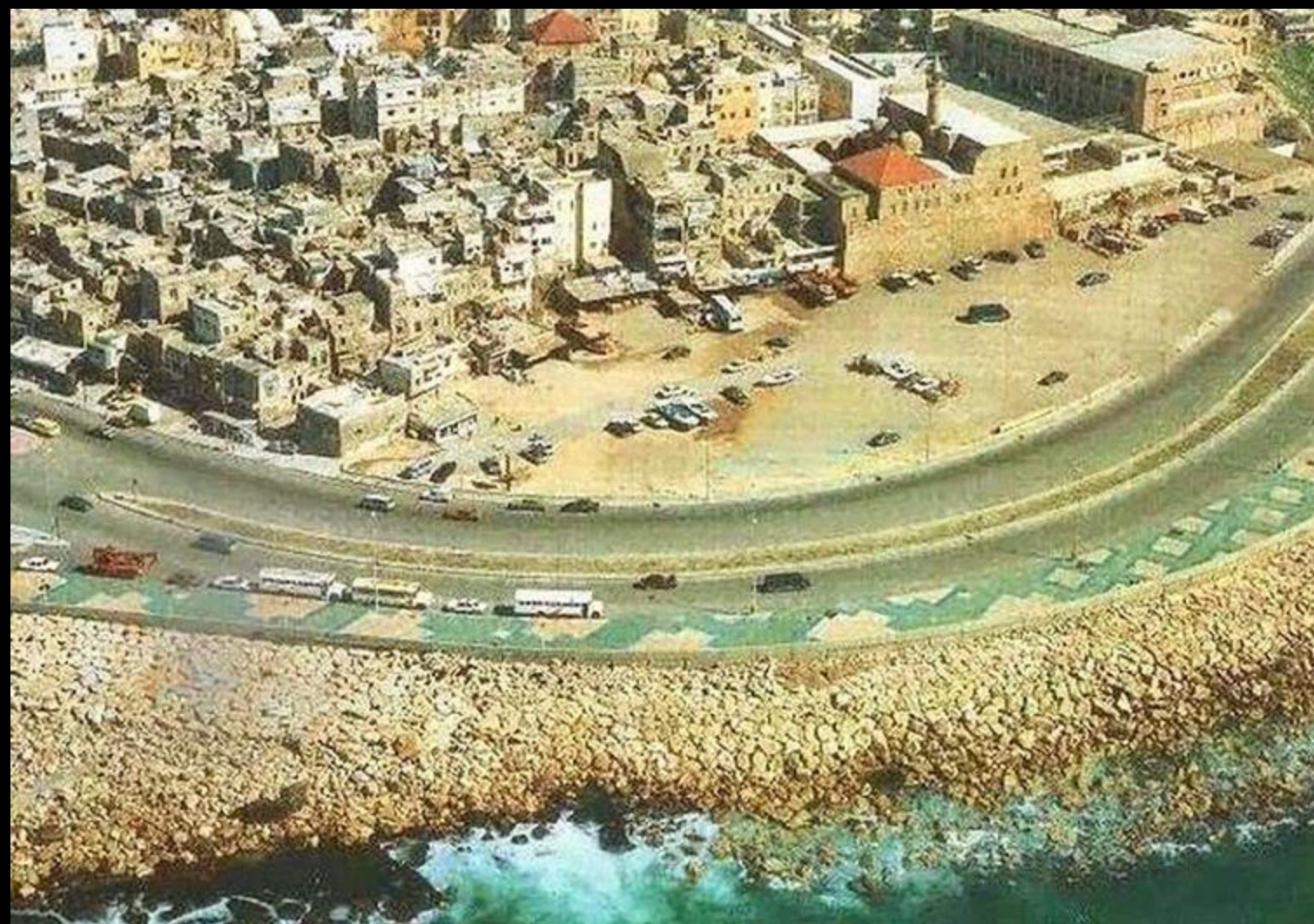


2. 10. 1934

SAIDA. PORT INTÉRIEUR 1934

A.P.

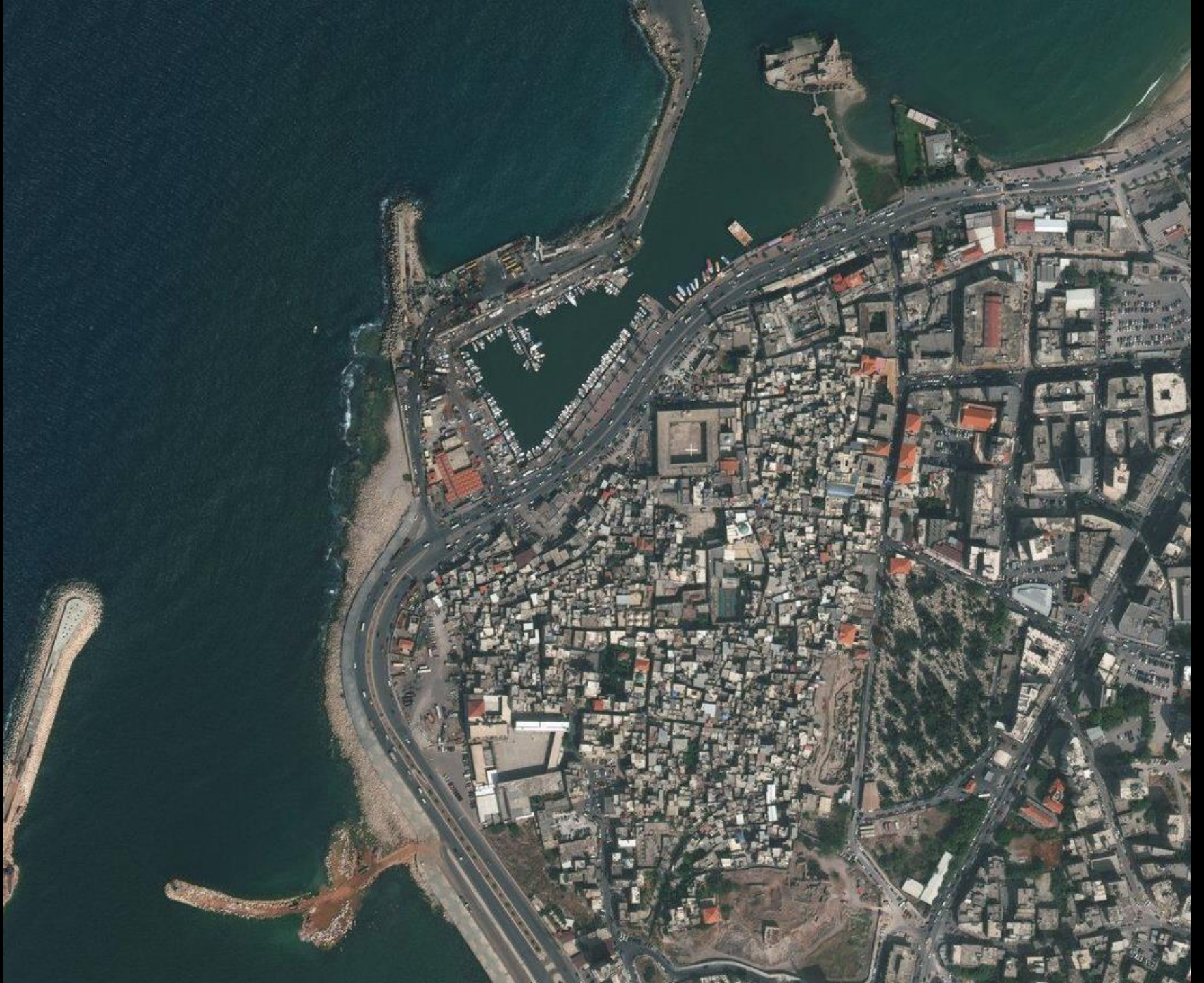










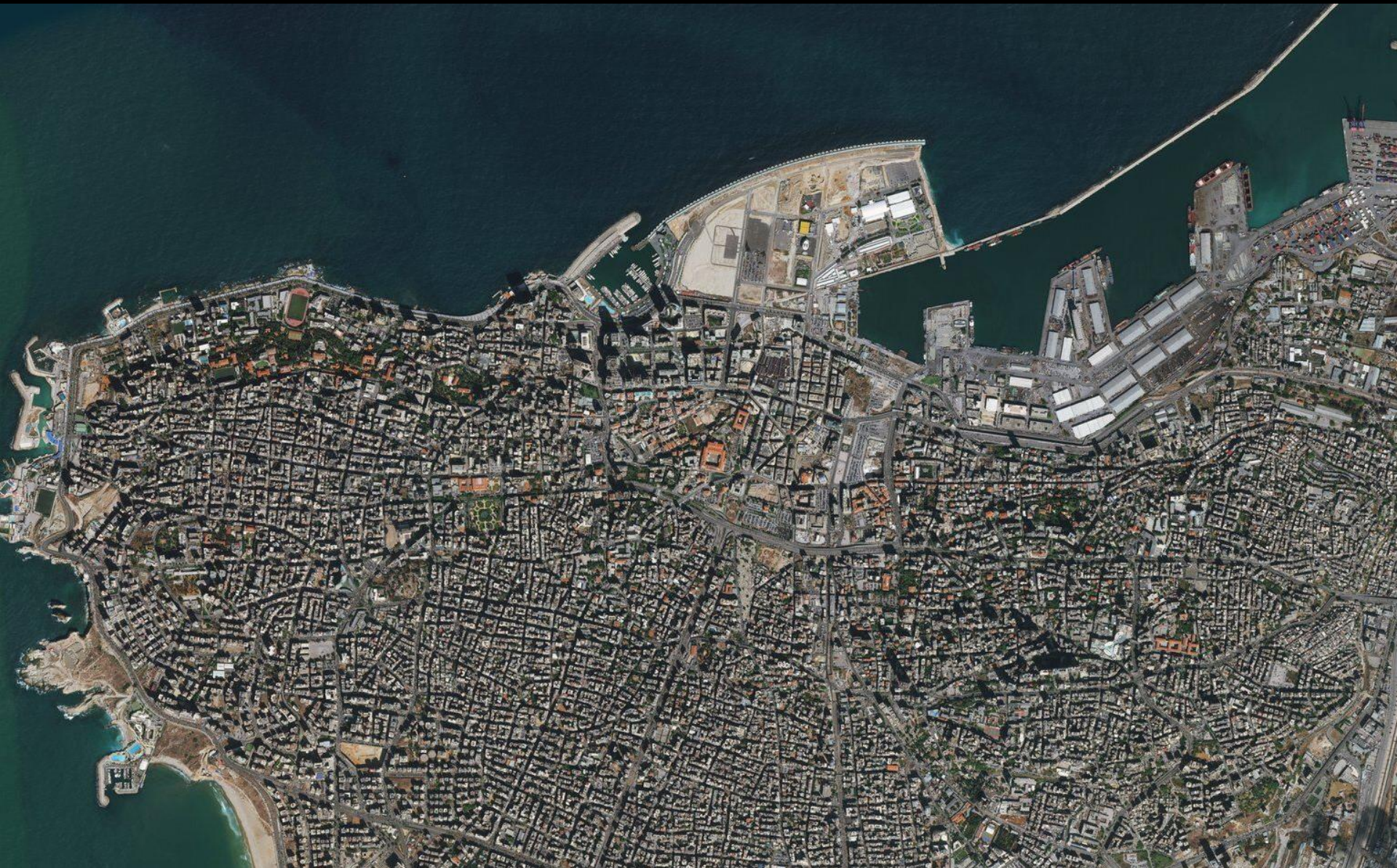






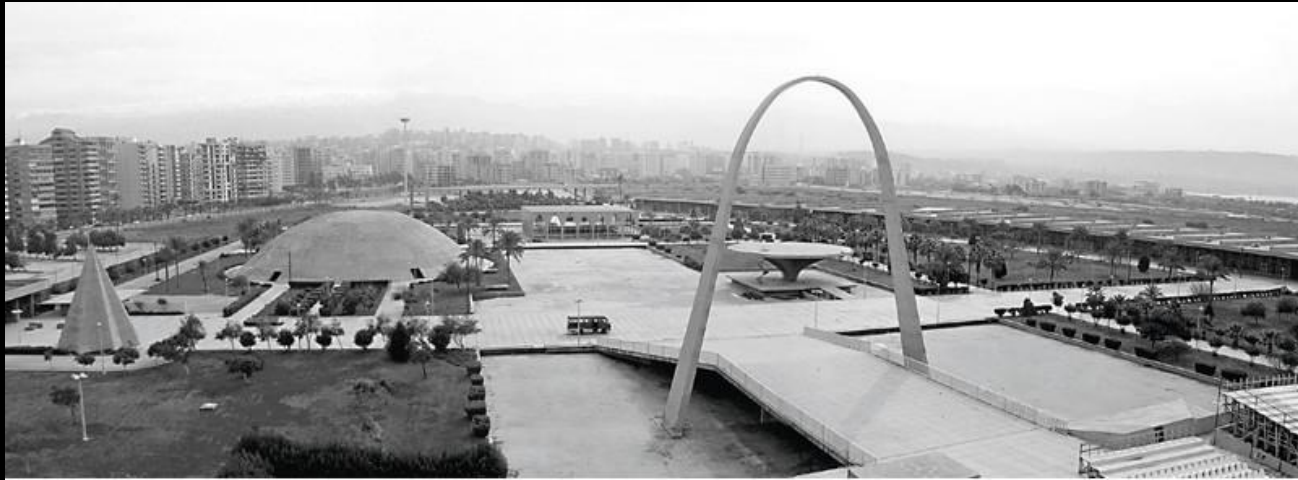












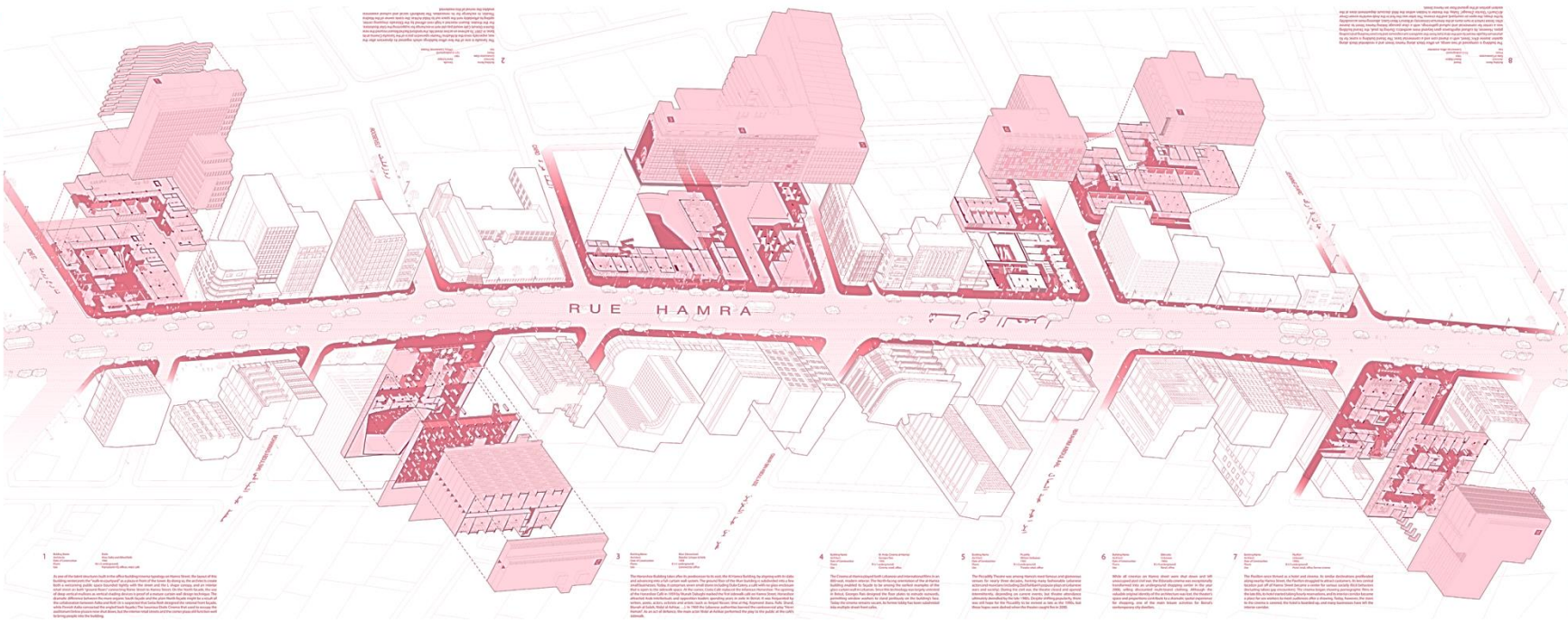


© 2014 The University of Chicago Press. All rights reserved. No part of this publication may be reproduced, stored in a retrieval system, or transmitted, in any form or by any means, electronic, mechanical, photocopying, recording, or by any information storage and retrieval system, without permission in writing from the University of Chicago Press.

Ground Play
A Case of Urban Resilience on Hamra Street

Ground Play is a case study of urban resilience on Hamra Street in Beirut, Lebanon. The project is a collaboration between the University of Chicago and the Lebanese Ministry of Urban Planning and Construction. The project aims to improve the resilience of the city's infrastructure and to create a more sustainable and resilient urban environment. The project is a collaboration between the University of Chicago and the Lebanese Ministry of Urban Planning and Construction. The project aims to improve the resilience of the city's infrastructure and to create a more sustainable and resilient urban environment.

Ground Play is a case study of urban resilience on Hamra Street in Beirut, Lebanon. The project is a collaboration between the University of Chicago and the Lebanese Ministry of Urban Planning and Construction. The project aims to improve the resilience of the city's infrastructure and to create a more sustainable and resilient urban environment. The project is a collaboration between the University of Chicago and the Lebanese Ministry of Urban Planning and Construction. The project aims to improve the resilience of the city's infrastructure and to create a more sustainable and resilient urban environment.



Ground Play

A Case of Urban Resilience on Hamra Street

University of Chicago
Department of Architecture
Ground Play is a case study of urban resilience on Hamra Street in Beirut, Lebanon. The project is a collaboration between the University of Chicago and the Lebanese Ministry of Urban Planning and Construction. The project aims to improve the resilience of the city's infrastructure and to create a more sustainable and resilient urban environment. The project is a collaboration between the University of Chicago and the Lebanese Ministry of Urban Planning and Construction. The project aims to improve the resilience of the city's infrastructure and to create a more sustainable and resilient urban environment.

