



**PERRIS UNION**  
HIGH SCHOOL DISTRICT

# HIGH SCHOOL ATTENDANCE BOUNDARIES TOWN HALL MEETING

**FEBRUARY 4, 2020**



PUHSD.ORG



@puhsd



PerrisUnionHSD



PerrisUnionHSD



# TOWN HALL AGENDA

5:00pm-7:00pm

- **Welcome and Introductions**

*Grant Bennett, Superintendent*

- **School District and City Boundaries in Our Area**

*Candace Reines, Deputy Superintendent, Business Services*

- **Liberty High School Project Overview**

*Hector Gonzalez, Director of Facilities*

- **Presentation of the Four Current Liberty High School Boundary Alternatives**

*Fred Good, Facilities Consultant*

- **Questions, Input and Discussion by the Community**

- **Closing/Next Steps**

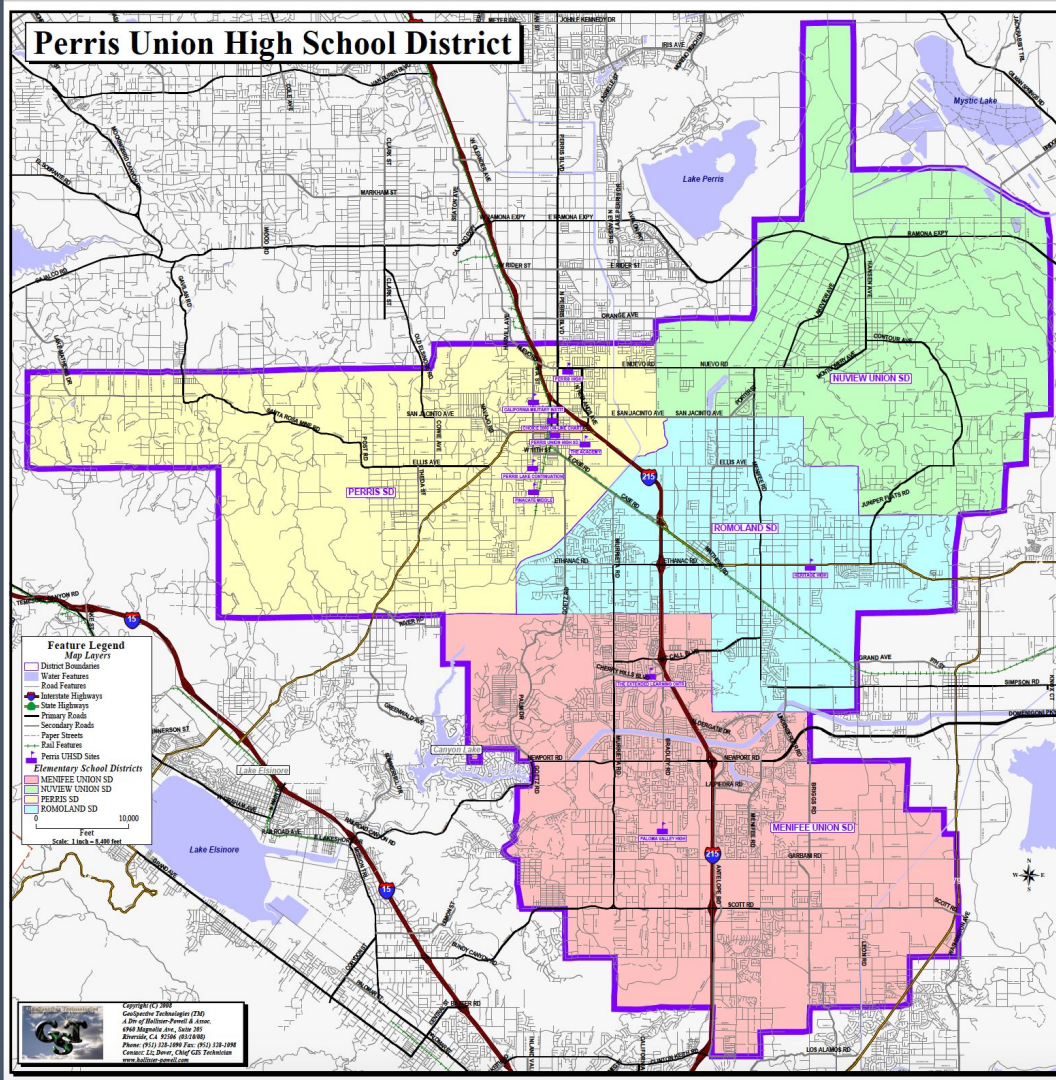
*Grant Bennett, Superintendent*





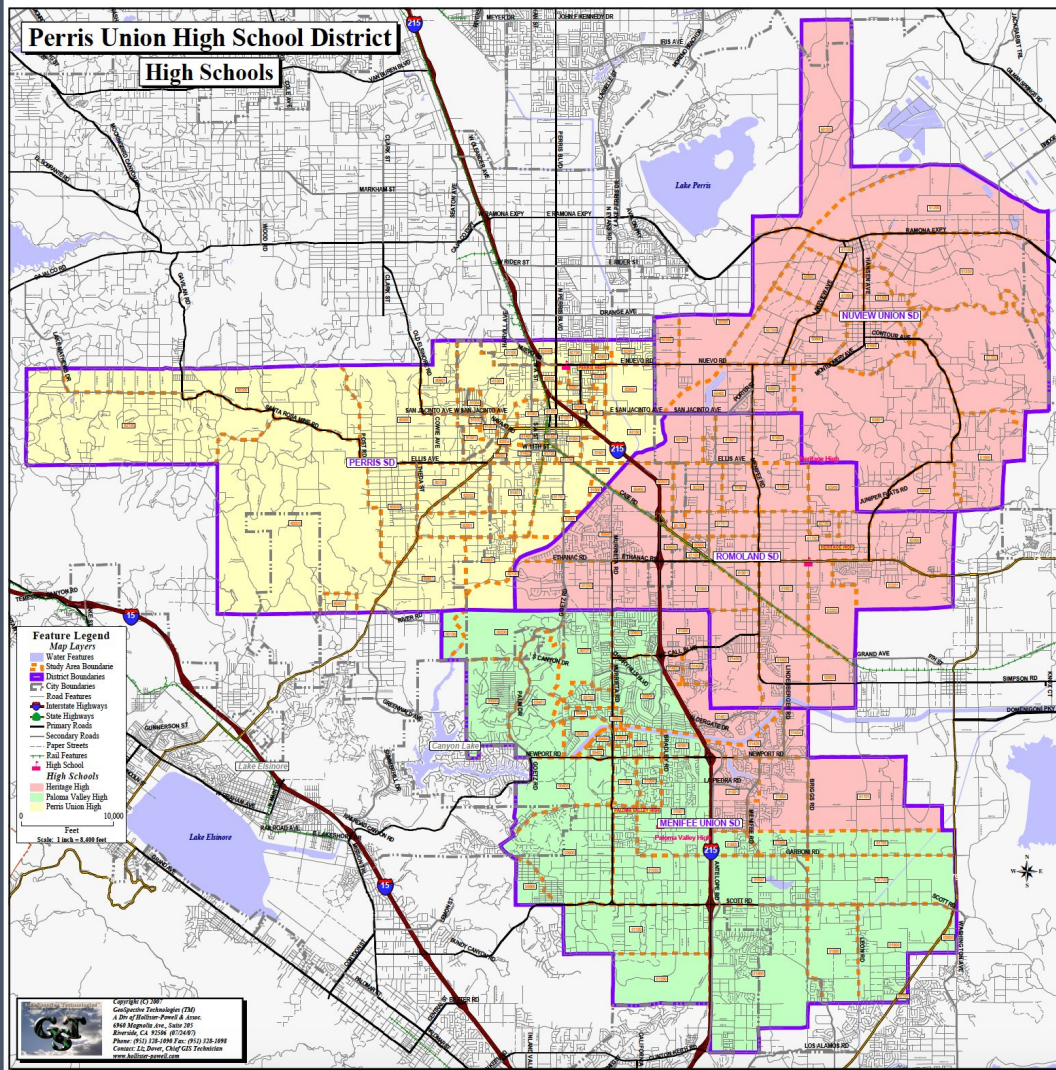
# SCHOOL DISTRICT AND CITY BOUNDARIES IN OUR AREA

# SCHOOL DISTRICT BOUNDARIES

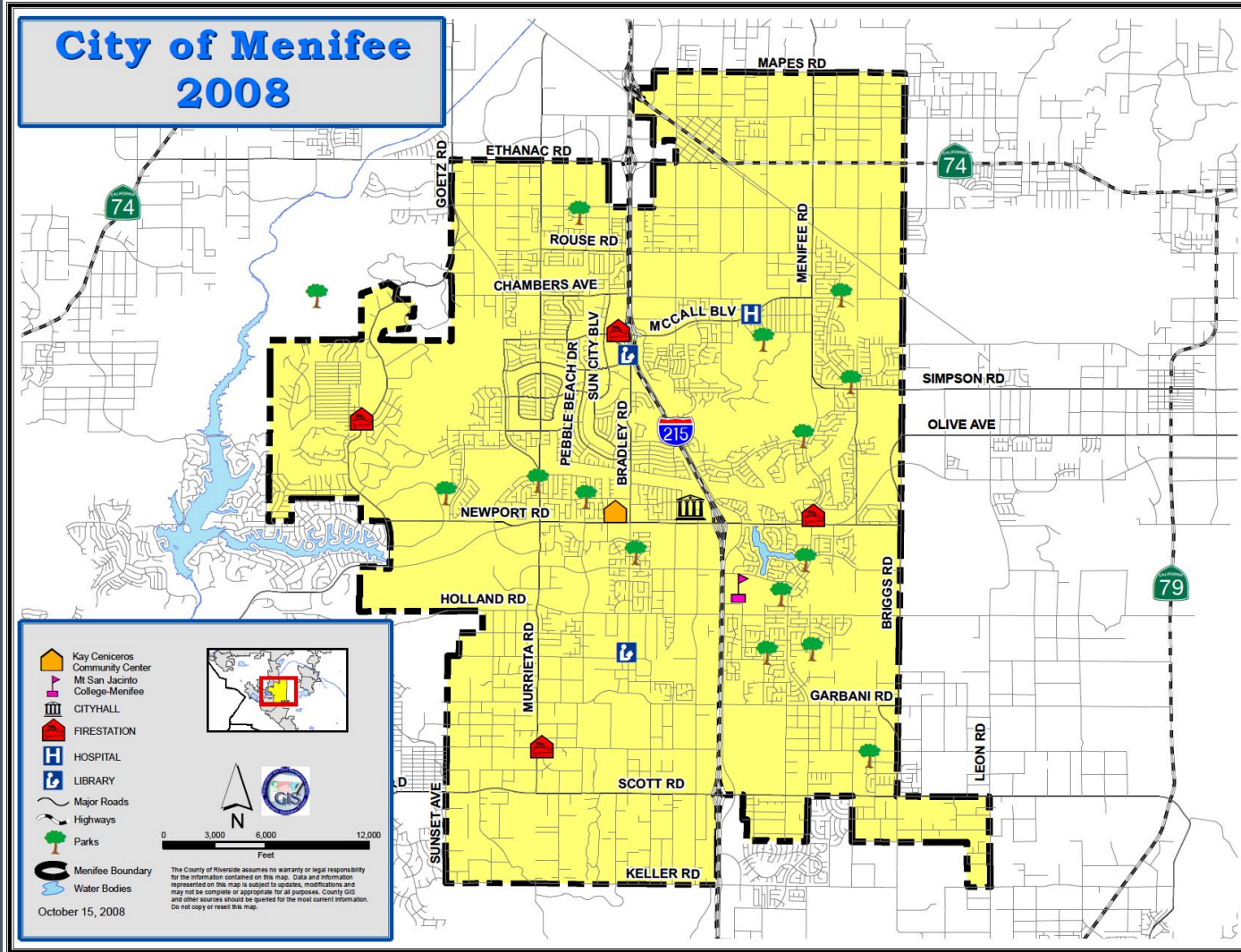




# CURRENT HIGH SCHOOL ATTENDANCE BOUNDARIES

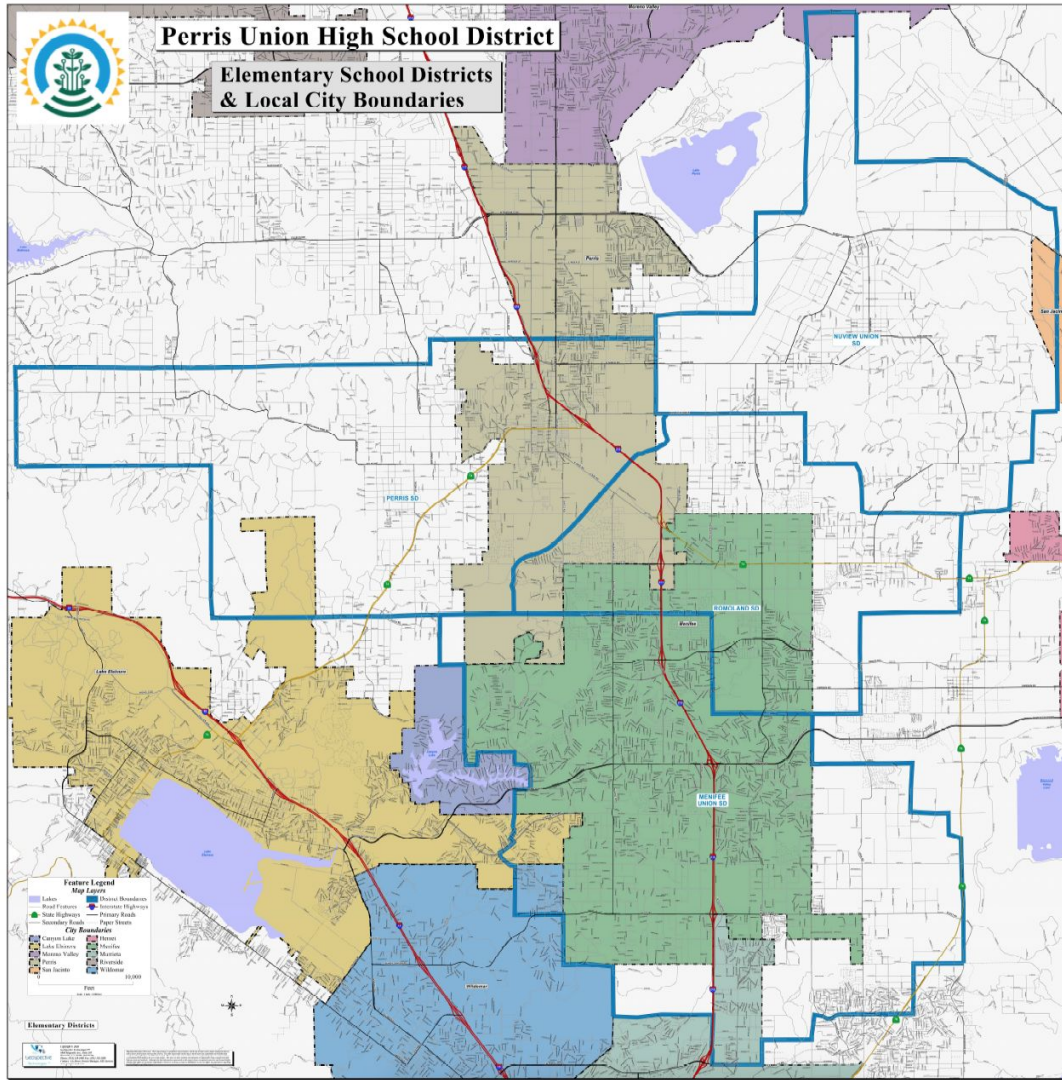


# CITY OF MENIFEE BOUNDARIES





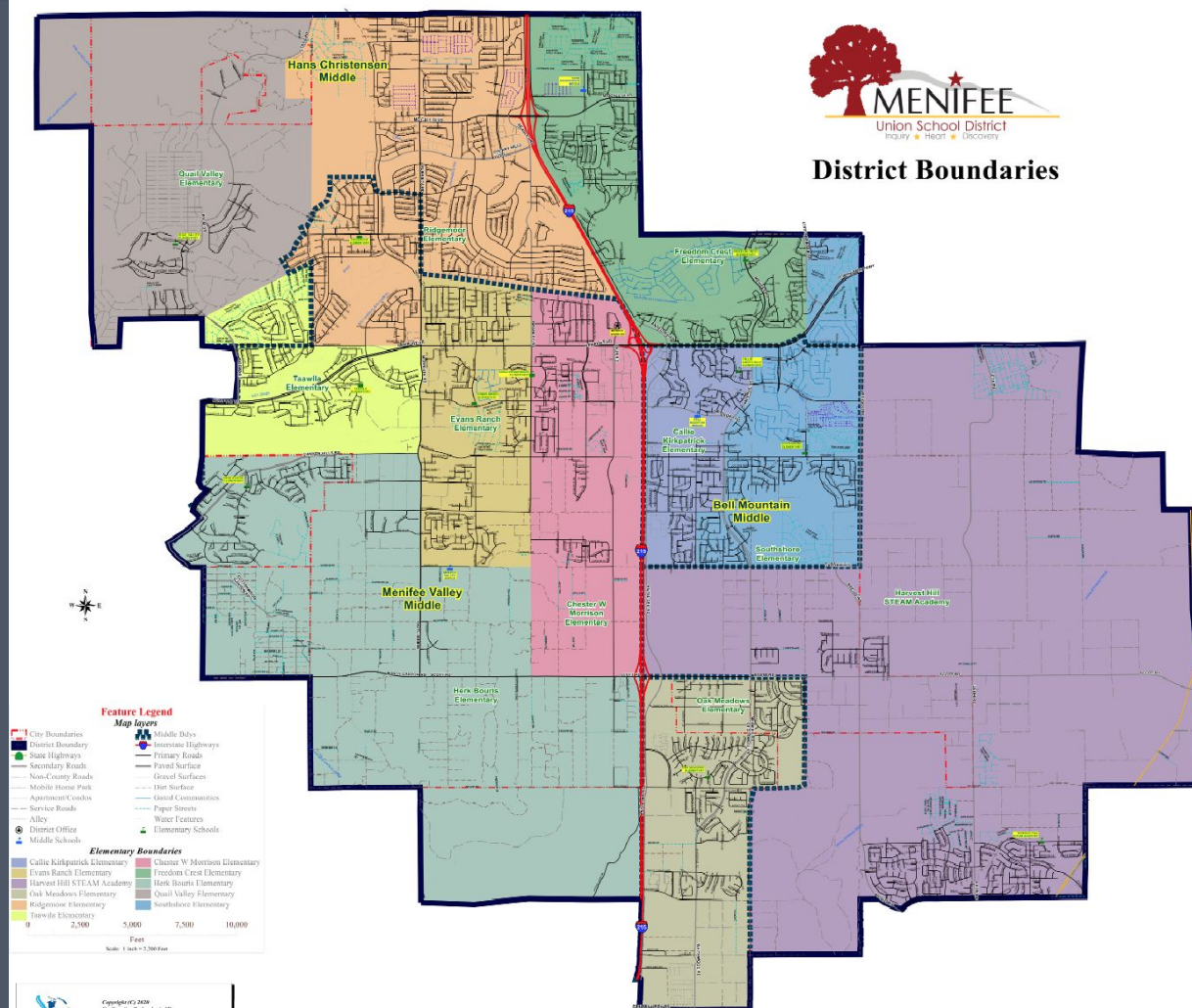
# SCHOOL DISTRICT AND CITY BOUNDARIES



# MENIFEE UNION SCHOOL DISTRICT ELEMENTARY AND MIDDLE SCHOOL ATTENDANCE BOUNDARIES



## District Boundaries







# LIBERTY HIGH SCHOOL PROJECT OVERVIEW



# LIBERTY HIGH SCHOOL

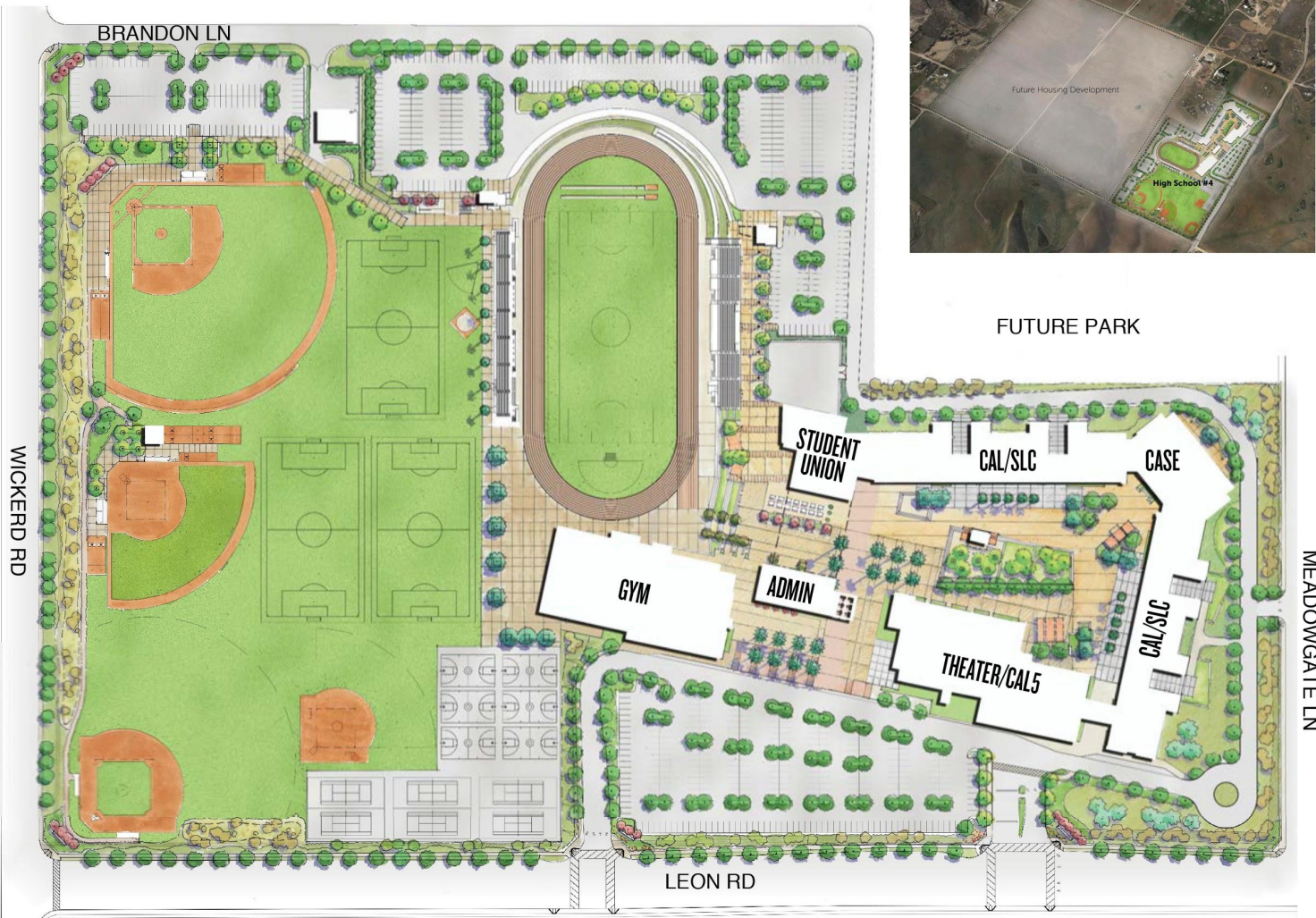
- Land for this high school was purchased in 2009
- Voters approved Measure W in November 2018, and along with Measure T, paved the way for construction to begin in February 2019
- Construction is well underway
- Liberty High School will open in August 2021





# LIBERTY HIGH SCHOOL SITE PLAN

FUTURE PARK







**LIBERTY  
HIGH  
SCHOOL  
SITE  
TODAY**







# LIBERTY HIGH SCHOOL CONSTRUCTION PROGRESS

ARTS BUILDING EXTERIOR



CLASSROOM BUILDINGS COLUMNS







# LIBERTY HIGH SCHOOL CONSTRUCTION PROGRESS

EXTERIOR OF GYMNASIUM



INTERIOR OF GYMNASIUM







# LIBERTY HIGH SCHOOL CONSTRUCTION PROGRESS

FRONT OF STAGE IN THEATER



STADIUM TICKET BOOTH AND CONCESSION





# LIBERTY HIGH SCHOOL RENDERINGS







# LIBERTY HIGH SCHOOL RENDERINGS



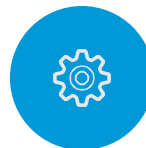


# LIBERTY HIGH SCHOOL RENDERINGS





# GRADE LEVEL OPENING PLAN



**2021-22**

9th and 10th Grades



**2022-23**

9th through 11th Grades



**2023-24**

9th through 12th Grades



**June 2024**

1st Graduating Class!





# DEVELOPMENT OF BOUNDARY ALTERNATIVES





# PLANNING CONSIDERATIONS FOR NEW BOUNDARIES

- Utilize logical geographic defining elements - i.e., the 215 as the east/west dividing boundary between LHS and PVHS.
- Identify the future impacts and opportunities for students at PHS, PVHS and HHS through the creation of the LHS boundary.
- Recognize and take advantage of the uniqueness of the four PUHSD high school campuses and programs.
- Carefully analyze impacts from future development - where, when, how much, etc. - collaborate with all local planning agencies.
- Analyze student attendance “intangibles” - intradistrict transfers, LHS “newness factor,” etc.
- Seek to maintain the “Open Enrollment Policy” for students/families.

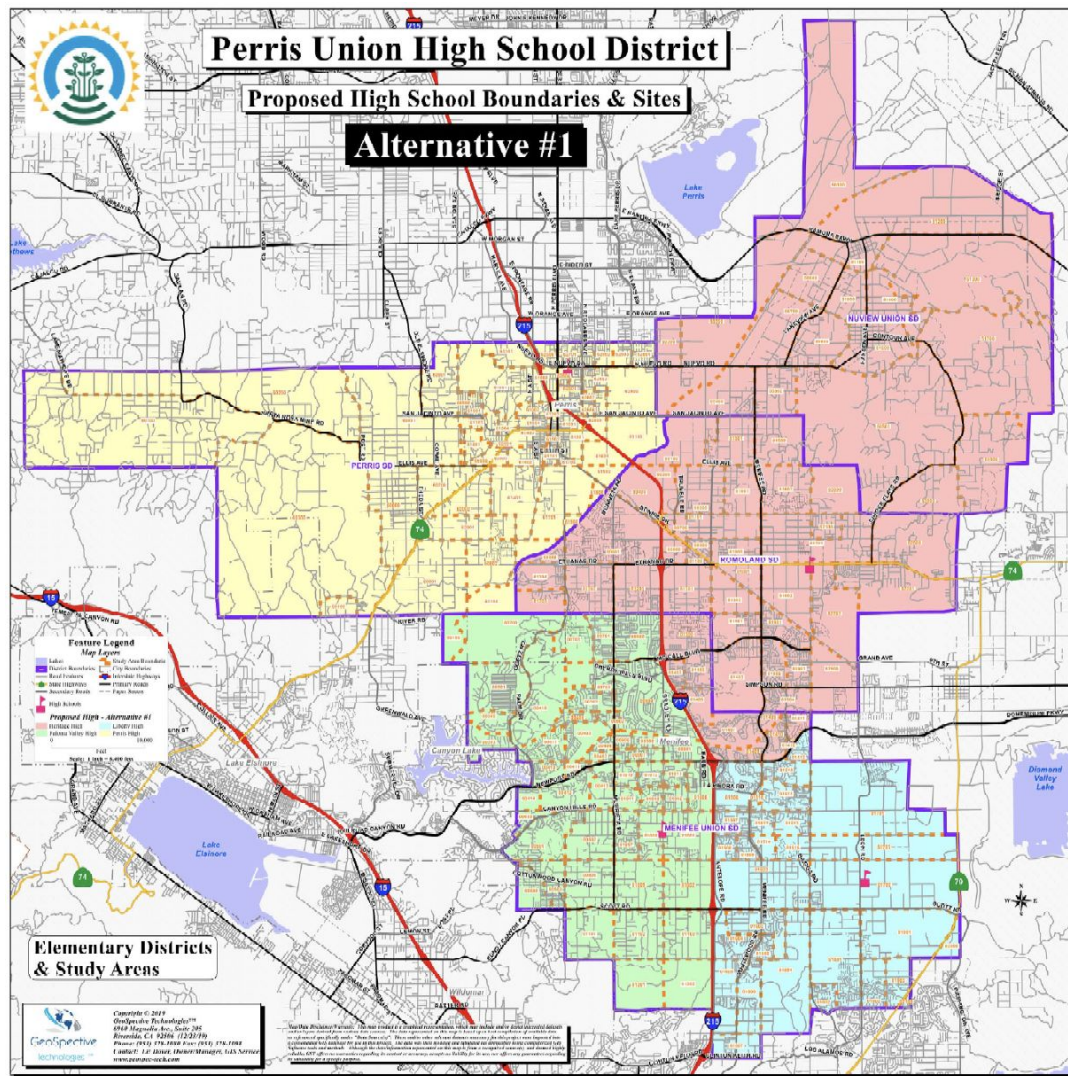


# BOUNDARY ALTERNATIVE #1

## Newport Road



# NEWPORT ROAD BOUNDARY





# ALTERNATIVE #1

## Enrollment Impacts & Implementation Considerations

### NEWPORT BOUNDARY

Northern Boundary: Newport/Domenigoni

Western Boundary: 215 Freeway

### Liberty Opening Plan

	2021-22	2022-23	2023-24
9th Grade	553	570	587
10th Grade	454	564	581
11th Grade		463	576
12th Grade			473
<b>Total</b>	<b>1,008</b>	<b>1,598</b>	<b>2,217</b>

### All High School Projections

	2023-24	10 year +/-	Open Seats
Perris HS	2,176	2,388	113
Heritage HS	2,442	2,757	183
Paloma Valley HS	2,219	2,502	338
Liberty HS	2,217	2,392	208
<b>Total</b>	<b>9,054</b>	<b>10,038</b>	<b>842</b>

### IMPLEMENTATION CONSIDERATIONS

- Results in available future capacity at all 4 high schools after 2023-24
- This alternative allows for more paced enrollment growth at LHS, as well as better opportunities for program development and refinement as enrollment grows and student program desires are more fully understood
- Allows for continued utilization of the Open Enrollment Policy
- No additional bus routes are required



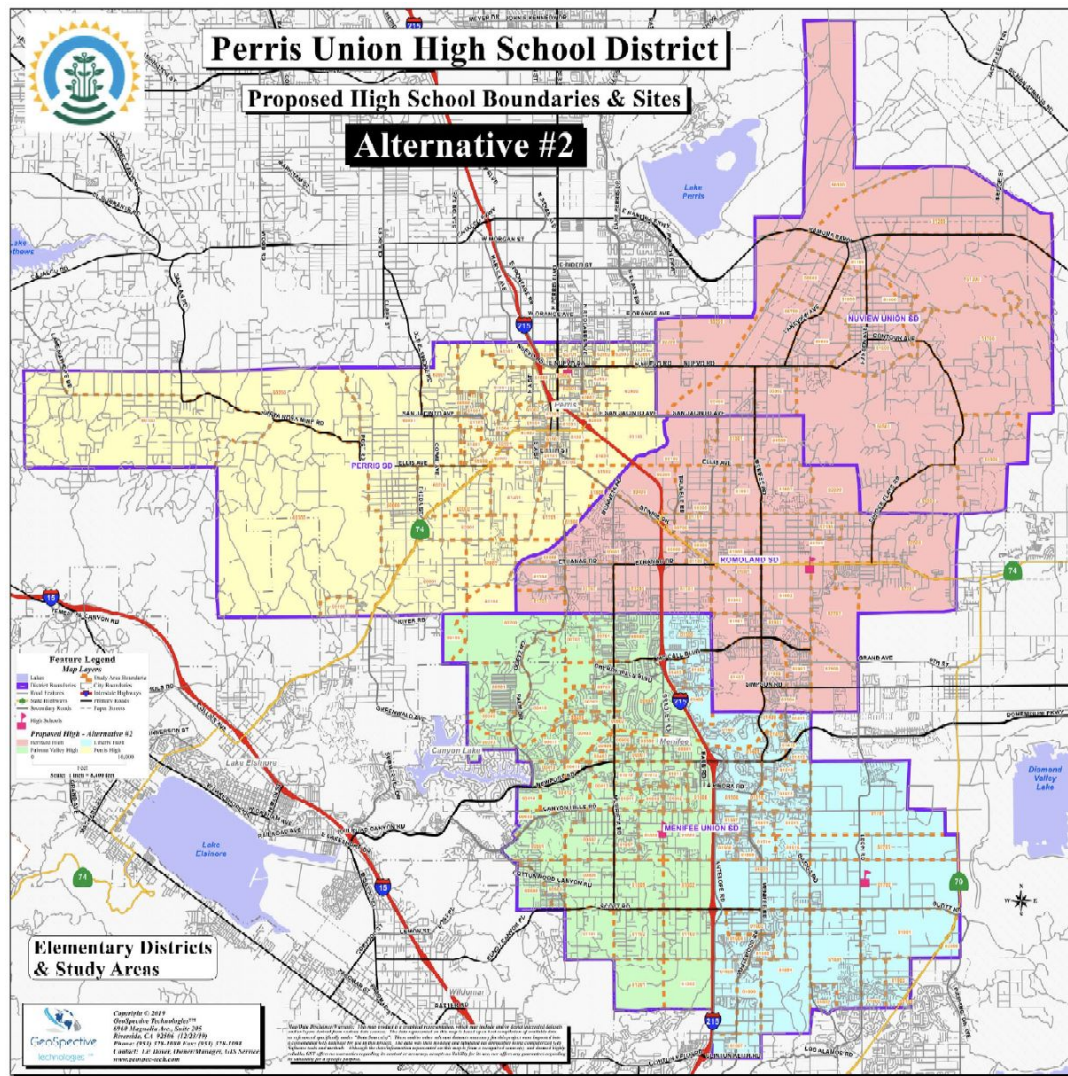


# BOUNDARY ALTERNATIVE #2

## Menifee Union School District Boundary

## ALTERNATIVE #2

**MENIFEE  
UNION  
SCHOOL  
DISTRICT  
BOUNDARY**







# ALTERNATIVE #2

## Enrollment Impacts & Implementation Considerations

### MUSD BOUNDARY

Northern Boundary: MUSD boundaries

Western Boundary: 215 Freeway

### Liberty Opening Plan

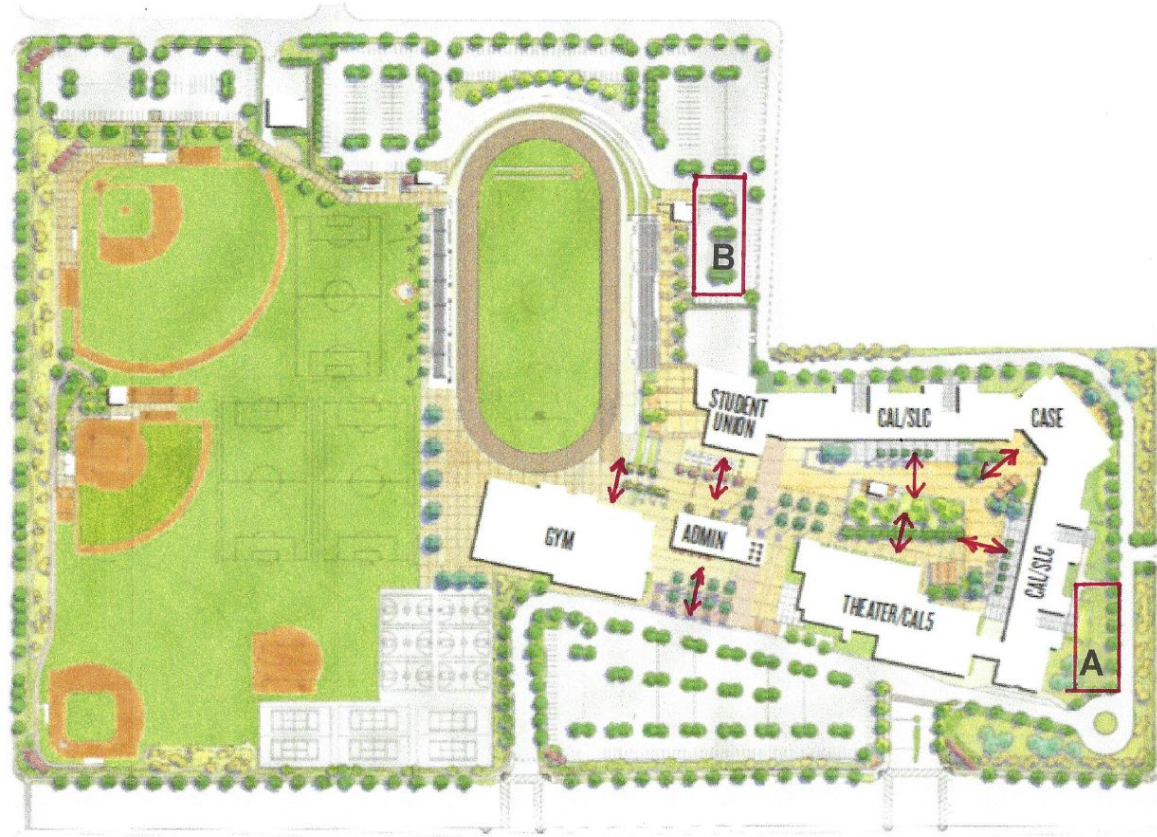
	2021-22	2022-23	2023-24
9th Grade	640	659	679
10th Grade	522	653	673
11th Grade		533	666
12th Grade			543
<b>Total</b>	<b>1,162</b>	<b>1,845</b>	<b>2,561</b>

### All High School Projections

	2023-24	10 year +/-	Open Seats
Perris HS	2,176	2,388	113
Heritage HS	2,098	2,400	540
Paloma Valley HS	2,219	2,502	338
Liberty HS	2,561	2,749	-149
<b>Total</b>	<b>9,054</b>	<b>10,038</b>	<b>842</b>

### IMPLEMENTATION CONSIDERATIONS

- This alternative responds to community input that was received at the 12/18 Public Hearing
- LHS capacity is exceeded within the 10-year period
- The District's use of its Open Enrollment Policy may be compromised through use of this alternative
- Additional bus routes will be required (projected cost of \$90,000/each new route)
- This alternative facilitates the MUSD expressed desire to reorganize as a K-12 district as no additional boundary adjustment would be required if/when reorganization occurs



HS4 Perris Union High  
School District

OVERALL PLAN

**A** and **B** identify locations for potential installation of additional classrooms

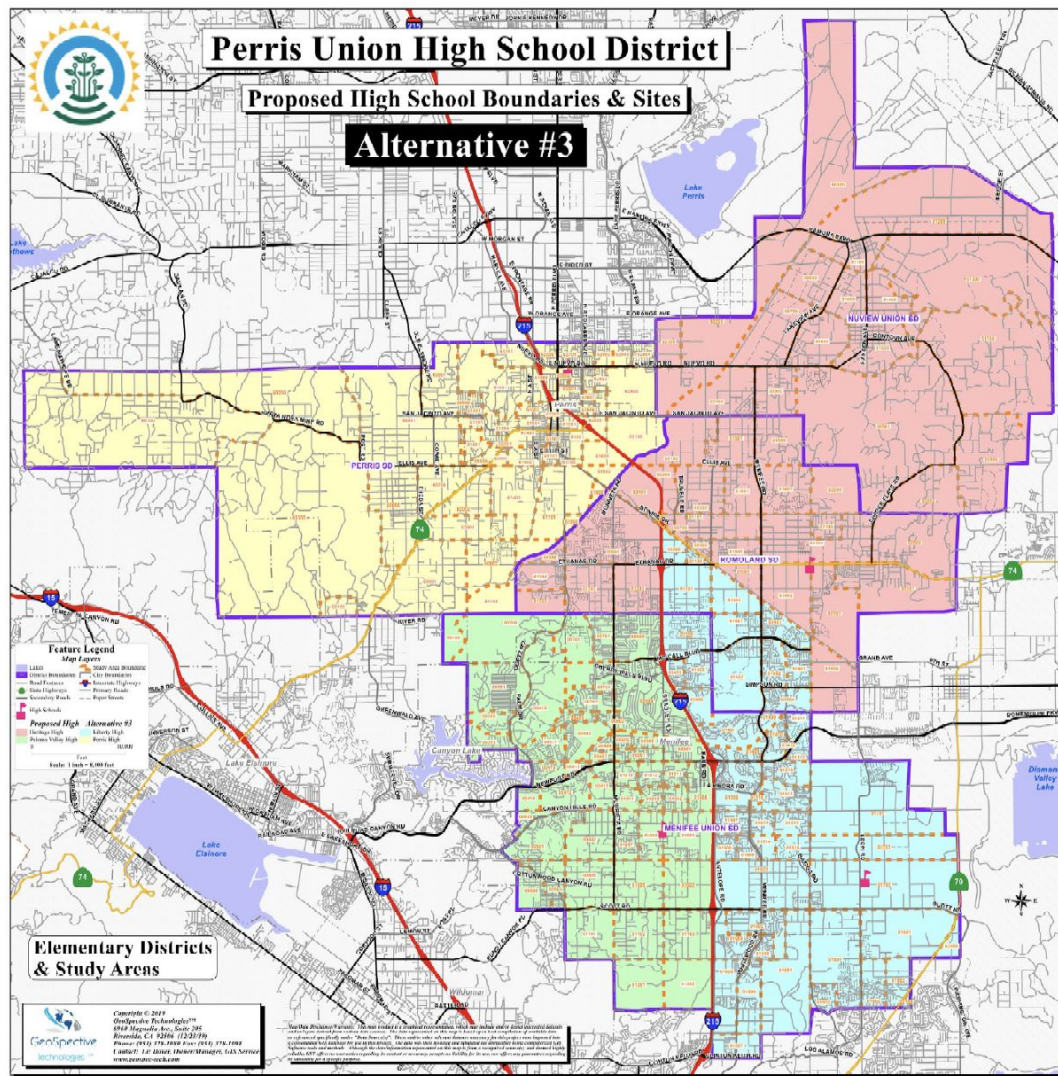




# BOUNDARY ALTERNATIVE #3

## Heritage Lake Boundary

# HERITAGE LAKE BOUNDARY





# ALTERNATIVE #3

## Enrollment Impacts & Implementation Considerations

### HERITAGE LAKE BOUNDARY

Northern Boundary: Rail Line

Western Boundary: 215 Freeway

**Eliminates all Intradistrict Transfers**

### Liberty Opening Plan

	2021-22	2022-23	2023-24
9th Grade	637	669	702
10th Grade	621	663	696
11th Grade		646	689
12th Grade			672
<b>Total</b>	<b>1,258</b>	<b>1,978</b>	<b>2,759</b>

### All High School Projections

	2023-24	10 year +/-	Open Seats
Perris HS	2,176	2,388	113
Heritage HS	1,800	1,895	1,045
Paloma Valley HS	2,319	2,602	238
Liberty HS	2,759	3,154	-554
<b>Total</b>	<b>9,054</b>	<b>10,039</b>	<b>842</b>

### IMPLEMENTATION CONSIDERATIONS

- This alternative responds to community input that was received at the 12/18 Public Hearing
- LHS capacity is significantly exceeded within the 10-year period
- The District's use of its Open Enrollment Policy will no longer be available through use of this alternative
- Facility utilization at HHS becomes underutilized
- The center of this expanded attendance area is approximately 6.5 miles from LHS while only 2.5 miles from HHS
- Additional bus routes will be required (projected cost of \$90,000/each new route)
- This alternative is not feasible due to enrollment impacts to both LHS and HHS





# BOUNDARY ALTERNATIVE #4

## City of Menifee Boundary

# CITY OF MENIFEE BOUNDARY





# ALTERNATIVE #4

## Enrollment Impacts & Implementation Considerations

### CITY OF MENIFEE BOUNDARY

Northern Boundary: City of Menifee boundaries

Western Boundary: 215 Freeway

**Eliminates all Intradistrict Transfers**

### Liberty Opening Plan

	2021-22	2022-23	2023-24
9th Grade	828	870	913
10th Grade	801	861	904
11th Grade		833	896
12th Grade			866
<b>Total</b>	<b>1,629</b>	<b>2,564</b>	<b>3,579</b>

### All High School Projections

	2023-24	10 year +/-	Open Seats
Perris HS	2,176	2,388	113
Heritage HS	980	1,017	1,923
Paloma Valley HS	2,319	2,602	238
Liberty HS	3,579	4,033	-1,433
<b>Total</b>	<b>9,054</b>	<b>10,040</b>	<b>842</b>

### IMPLEMENTATION CONSIDERATIONS

- This alternative responds to community input that was received at the 12/18 Public Hearing
- LHS capacity is significantly exceeded within the 10-year period, HHS enrollment is tremendously reduced and the HHS facility is severely underutilized
- The District's use of its Open Enrollment Policy will no longer be available through use of this alternative
- The center of this expanded attendance area is approximately 7 miles from LHS while only 2 miles from HHS
- Additional bus routes will be required (projected cost of \$90,000/each new route)
- This alternative is impractical due to enrollment impacts to both LHS and HHS, as well as the fact that the HHS campus would be within the revised boundary area





**QUESTIONS, INPUT AND  
DISCUSSION BY THE COMMUNITY**



## NEXT STEPS

- The Perris Union High School District Board of Trustees will meet on February 12th at their regularly scheduled meeting to continue their discussions related to the finalization of boundaries for all high schools
- Community input from tonight's meeting will be shared with the Board of Trustees
- New high school attendance boundaries will be effective for the 2021-22 school year
- We are hopeful the District's Open Enrollment policy will remain in effect so that regardless of the final decision on boundaries, families within PUHSD will still have a choice of school to attend



# THANK YOU

PERRIS UNION HIGH SCHOOL DISTRICT

---

Please connect with us online:



[PUHSD.ORG](http://PUHSD.ORG)



[@puhsd](https://twitter.com/puhsd)



[PerrisUnionHSD](https://www.facebook.com/PerrisUnionHSD)



[PerrisUnionHSD](https://www.instagram.com/PerrisUnionHSD)