

TWITCH FOR MUSICIANS

PART ONE – UNDERSTANDING TWITCH

1.7 – GO WATCH STREAMERS ON TWITCH

Before moving on to the next part, spend a couple hours on Twitch watching streams in the Music & Performing Arts category. Pay attention to what the streamer is doing, what tools they are using, and how the audience is responding to them. Read the streamer's Panels. Participate in their stream by chatting, following, and if you're so inclined, donating or subscribing.

There is a Twitch mobile app, but watch on the website first. You'll have easier access to all the features. They can be a bit hidden on the app.

SET UP YOUR ACCOUNT

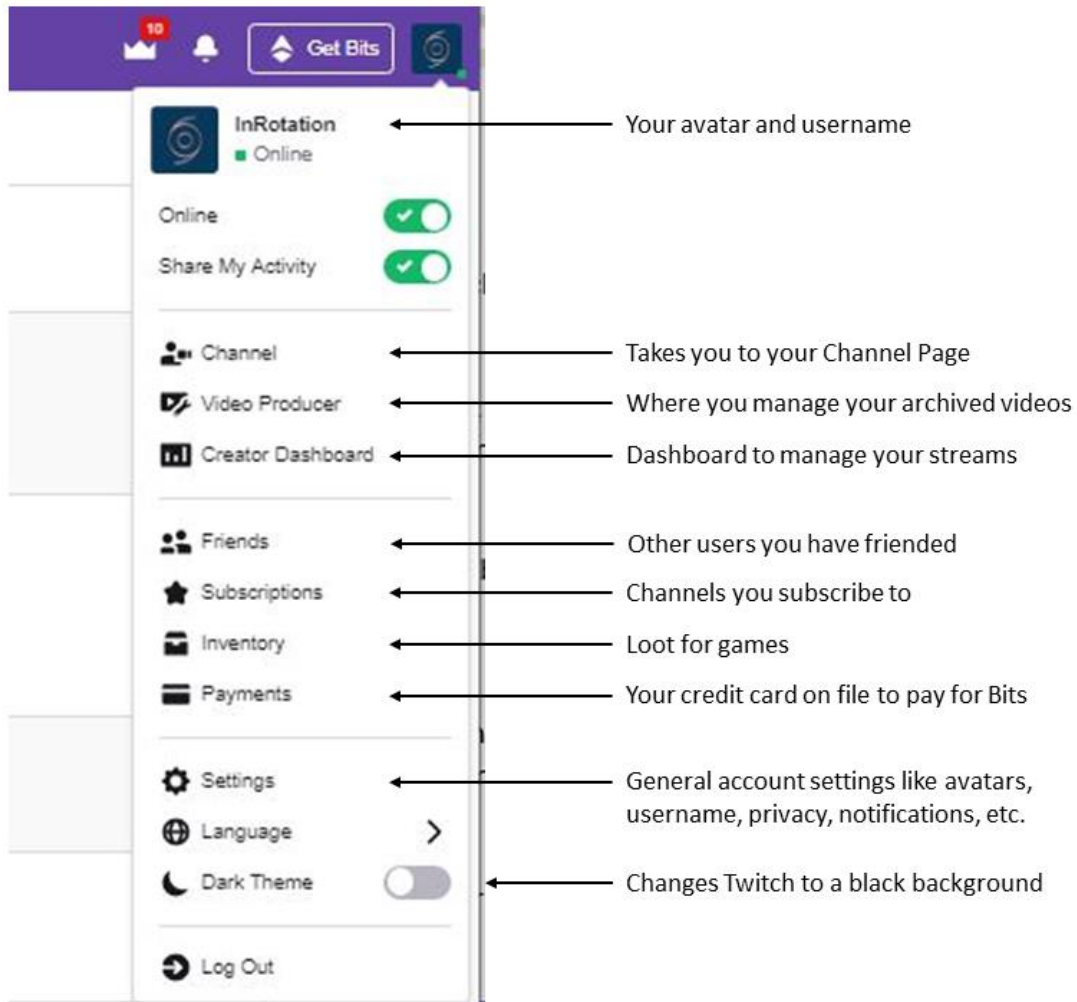
Go to <https://www.twitch.tv>, click Sign Up in the top right corner of the page, and create an account.

Your username is also your channel name, so really think about what that should be and try to match it to the usernames of your social media accounts.

Don't worry about setting up your Channel Page. For now, set your privacy preferences, avatar, and payment method (if you want to try subscribing and buying Bits now).

SETTING YOUR AVATAR, DISPLAY NAME, BIO AND PROFILE BANNER

Click your avatar at the top right of the website, and you'll get this menu:





Select Settings and you'll see where to customize your Profile.

Settings


Profile Twitch Prime Channel and Videos Security and Privacy Notifications Connections Recommendations

Profile Picture

Must be JPEG, PNG, or GIF and cannot exceed 10MB.


Profile Banner



File format: JPEG, PNG, GIF (recommended 1200x480, max 10MB)

Profile Settings

Change identifying details for your account.

Username 

You may update your username

Display Name

Customize capitalization for your username

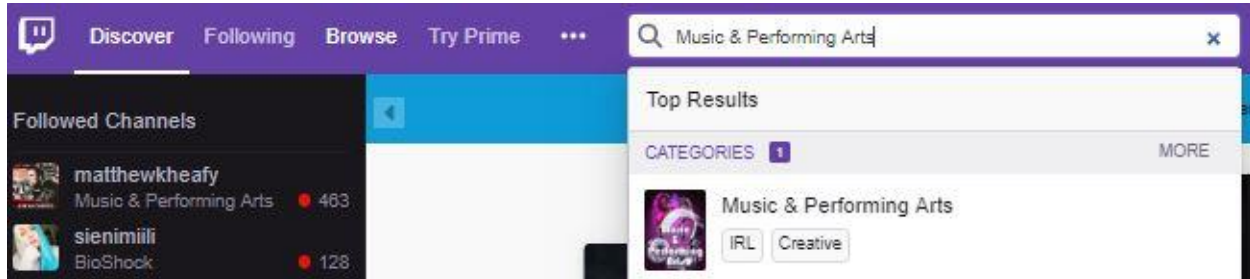
Bio

Who you are in fewer than 300 characters

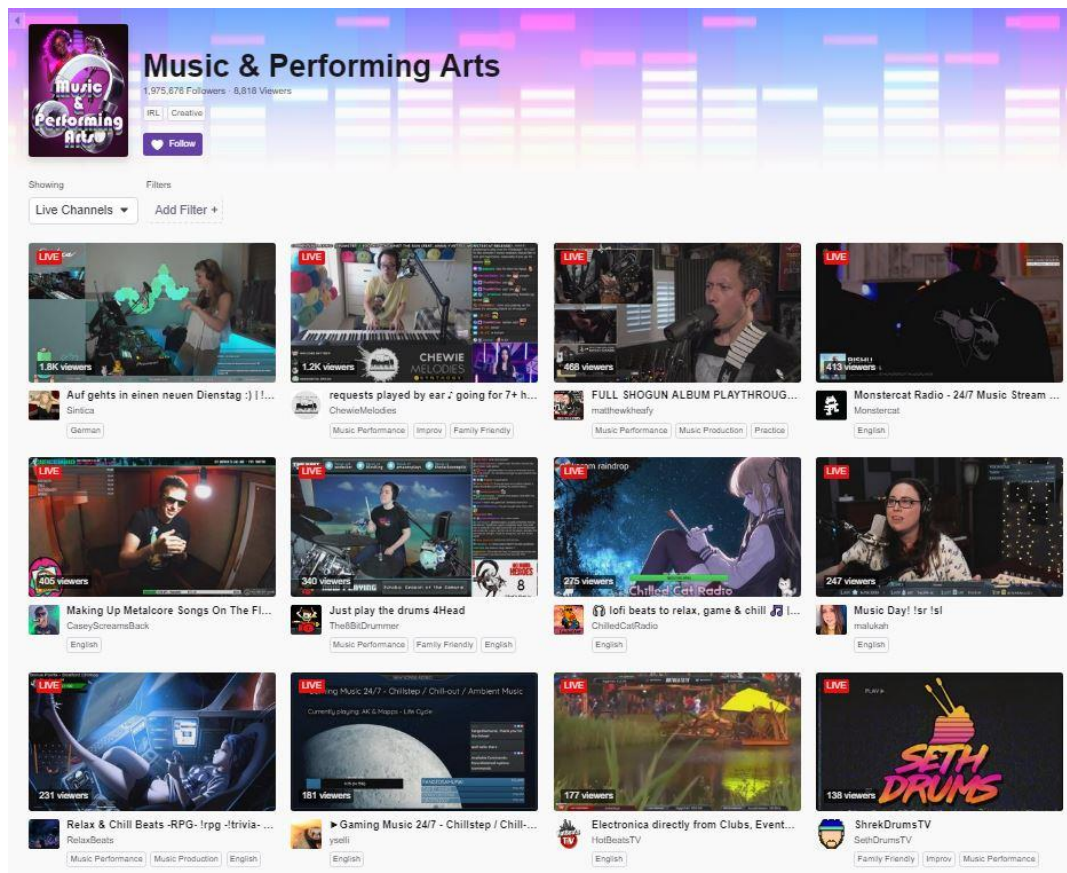
Your username is your channel name, but you can customize your Display Name with capitalization. You can add a bio to your profile, a profile picture (avatar), and Profile Banner. The Profile Banner will appear when someone clicks your username on your Channel Page. It's hardly ever used, but it's good to have it set.

BROWSE THE MUSIC CATEGORY

Enter “Music & Performing Arts” in the search to find the music category or go to <https://www.twitch.tv/directory/game/Music%20%26%20Performing%20Arts>.



You'll see all the music streamers who are live right now. Click on a few, hang out with people, have some fun. I'll tell you how they're doing everything in the coming sections.



PARTICIPATING IN THE STREAM

While you're watching a stream, try participating.

Chatting

Most channels are set so that anyone can chat. The bigger ones sometimes require a follow or a minimum amount of time after following before chatting. Be sure to read the Chat Rules on the streamer's Channel Page, if they have any listed.

Making a Donation

There is another way, outside of Twitch, to give money to a streamer. Streamlabs and StreamElements are two companies that will process monetary donations through Paypal or a credit card and use a chatbot or an alert to notify the streamer in real time that a donation has been made. Neither company takes a percentage of the donation. Paypal and the credit card processor charge their normal fees.

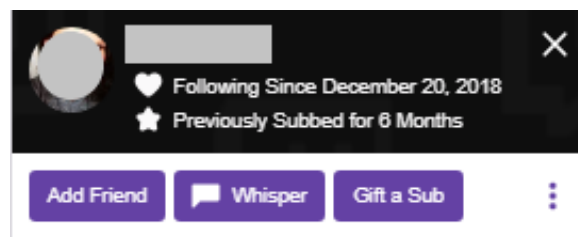
Because no percentage is taken from the donation and the streamer doesn't need to be an Affiliate or Partner to use this form of donation, lots of streamers use this.

Donating will take you off Twitch and onto the Streamlabs site (streamlabs.com/twitchchannelname) or the StreamElements site (streamelements.com/twitchchannelname) and then to Paypal or a credit card to process, so it's not as friction-free as donating money using Bits and Cheermotes.

Look at the streamer's Panels to see how they prefer to take donations. You could try entering the chat command "!donate" to see if the chatbot will return a message with a donation link.

Friending and Whispering to Other Users

You can click on a user's name in the chat and get a pop-up window to see when they joined Twitch, get a link to their Channel Page, gift them a subscription to a channel you're both watching, friend them, and to whisper to them.



Friending is not particularly popular on Twitch, probably because there's no newsfeed to see what your friends are up to or any other way to meaningfully interact with them.

Whispering means having a private, off-chat conversation. Start a whisper by clicking the user's name in the chat, then click Whisper. A private chat box will open at the bottom of your screen. If you get a whisper from someone, a notification will appear in the message icon at the bottom of your screen. Click the message icon to open the chat.

