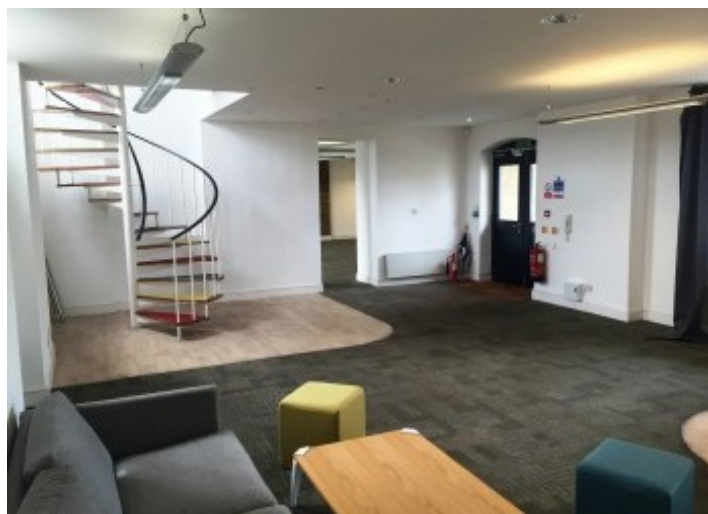
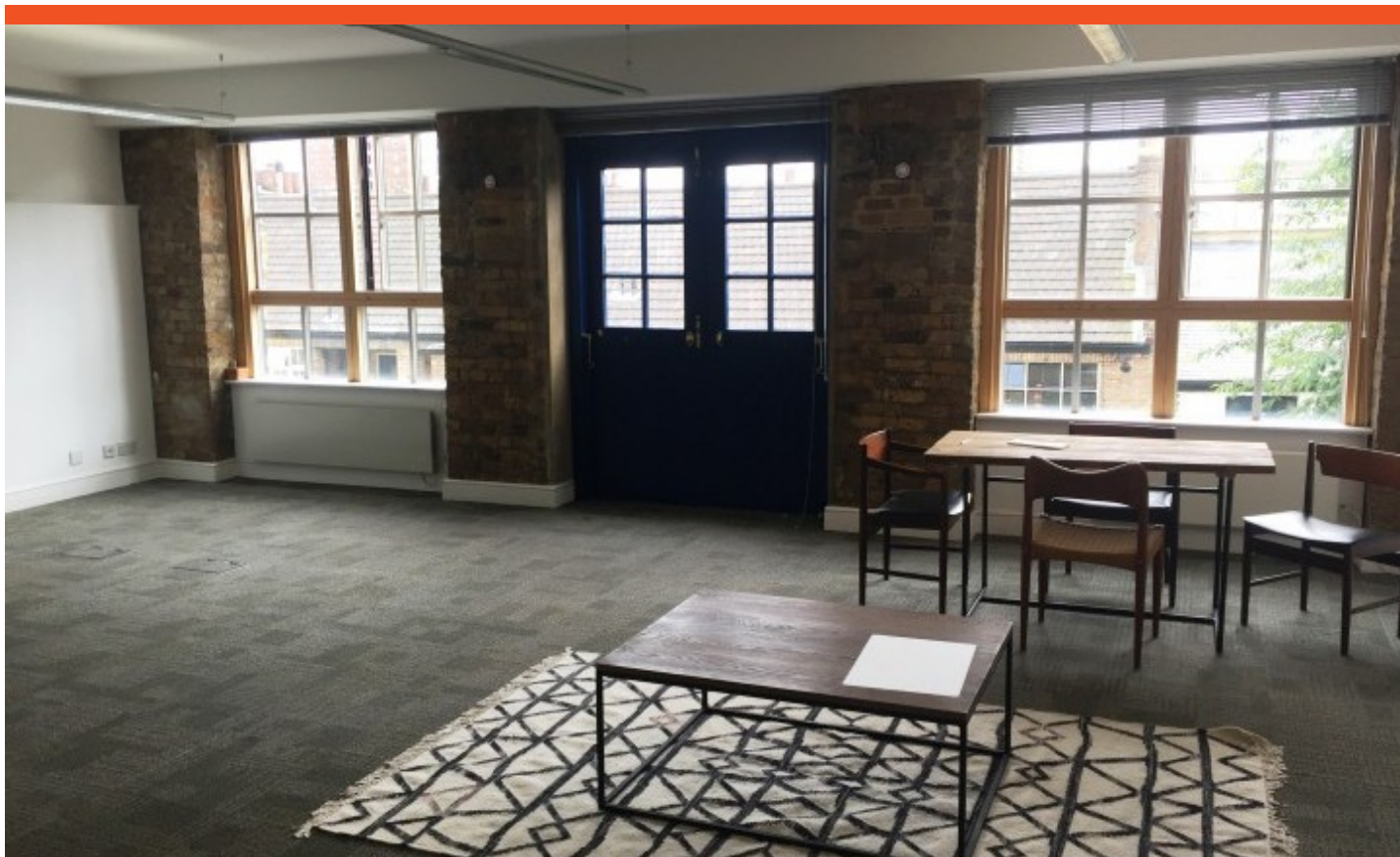


WATERLOO COURT, 10 THEED STREET, LONDON, SE1 8ST
Approx 3,000 sq ft
WAREHOUSE STYLE OFFICES TO LET



The accommodation available in Waterloo Court is comprised of an interlinking unit arranged over the 2nd and third floors, having an internal staircase.

ONE AMERICA STREET, LONDON, SE1 ONE | +44 (0)20 3575 7777 | @UNIONSTPARTNERS [UNIONSTREETPARTNERS.CO.UK](https://unionstreetpartners.co.uk)

Subject to Contract. USP for themselves and the vendor of this property give notice that these particulars do not form, or form part of, any offer or contract. They are intended to give fair description of the property and whilst every effort has been made to ensure their accuracy this cannot be guaranteed. Any intending purchaser must therefore satisfy themselves by inspection or otherwise. Neither Farebrother, nor any of its employees, has any authority to make or give any further representations or warranty whatsoever in relation to this property. All prices and rents quoted are net of VAT.

WATERLOO COURT, 10 THEED STREET, LONDON, SE1 8ST

Approx 3,000 sq ft

WAREHOUSE STYLE OFFICES TO LET



Location

The property is located in the heart of South Bank, three blocks immediately to the north of Waterloo East Station, on the north side of Theed Street which runs between Cornwall Road and Roupell Street. Waterloo main line and underground station is less than a five minute walk to the west. Southwark Underground and Blackfriars mainline stations are also within easy walking distance. The local area is thriving with a multitude of cafes, bars and restaurants.

Postcode

SE1

Borough

Southwark

Size

Approx 3,000 sq ft

Address

WATERLOO COURT, 10 THEED STREET, LONDON, SE1 8ST

Amenities

- Warehouse style accommodation
- Central heating
- Demised w/c's
- Underfloor trunking
- Kitchen area
- Internal staircase
- EPC – To be assessed

Lease

New lease direct from landlord

Rent (per sq ft)

£ 52.50 psf

Rates (per sq ft)

£ c.11.30 psf

Service charge (per sq ft)

£ c.4.50 psf

ONE AMERICA STREET, LONDON, SE1 ONE | +44 (0)20 3575 7777 | @UNIONSTPARTNERS [UNIONSTREETPARTNERS.CO.UK](https://unionstreetpartners.co.uk)

Subject to Contract. USP for themselves and the vendor of this property give notice that these particulars do not form, or form part of, any offer or contract. They are intended to give fair description of the property and whilst every effort has been made to ensure their accuracy this cannot be guaranteed. Any intending purchaser must therefore satisfy themselves by inspection or otherwise. Neither Farebrother, nor any of its employees, has any authority to make or give any further representations or warranty whatsoever in relation to this property. All prices and rents quoted are net of VAT.

WATERLOO COURT, 10 THEED STREET, LONDON, SE1 8ST

Approx 3,000 sq ft

WAREHOUSE STYLE OFFICES TO LET



Floor	Area (sq ft)	Availability
2nd Floor	Approx 3,000 sq ft	Available
Total	3,000 sq ft	

USP Contacts

SIMON SMITH

ss@unionstreetpartners.co.uk

Tel: 020 3757 8577 | Mobile: 07736 880 316

RUPERT COWLING

rc@unionstreetpartners.co.uk

Tel: 020 3757 8578 | Mobile: 07736 880 317

ONE AMERICA STREET, LONDON, SE1 ONE | +44 (0)20 3575 7777 | @UNIONSTPARTNERS UNIONSTREETPARTNERS.CO.UK

Subject to Contract. USP for themselves and the vendor of this property give notice that these particulars do not form, or form part of, any offer or contract. They are intended to give fair description of the property and whilst every effort has been made to ensure their accuracy this cannot be guaranteed. Any intending purchaser must therefore satisfy themselves by inspection or otherwise. Neither Farebrother, nor any of its employees, has any authority to make or give any further representations or warranty whatsoever in relation to this property. All prices and rents quoted are net of VAT.