

A MINI ATLAS OF

# NEWARK

METHODS IN SPATIAL RESEARCH • SPRING 2022 • ALL MAPS DESIGNED BY KELSEY JACKSON



3

**PROPOSED CANNABIS ZONING BUFFERS BY WARD**

5

**WHAT REMAINS? THE 1967 NEWARK COLLEGES EXPANSION PROJECT**

7

**POSTED UP**

9

**BORDERS OF NEWARK**



# PROPOSED CANNABIS ZONING BUFFERS BY WARD

The legalization of cannabis in the State of New Jersey has created the need to define and regulate its use through zoning ordinances. The city of Newark has proposed “Buffer Zones”, which define where cannabis businesses may or may not operate. These zones would require businesses to maintain a radial distance from places like daycares, schools, universities, parks, and prisons. The concentration of these zones leave limited space for businesses to open on commercial streets, which would force business owners to settle in residential and industrial areas.



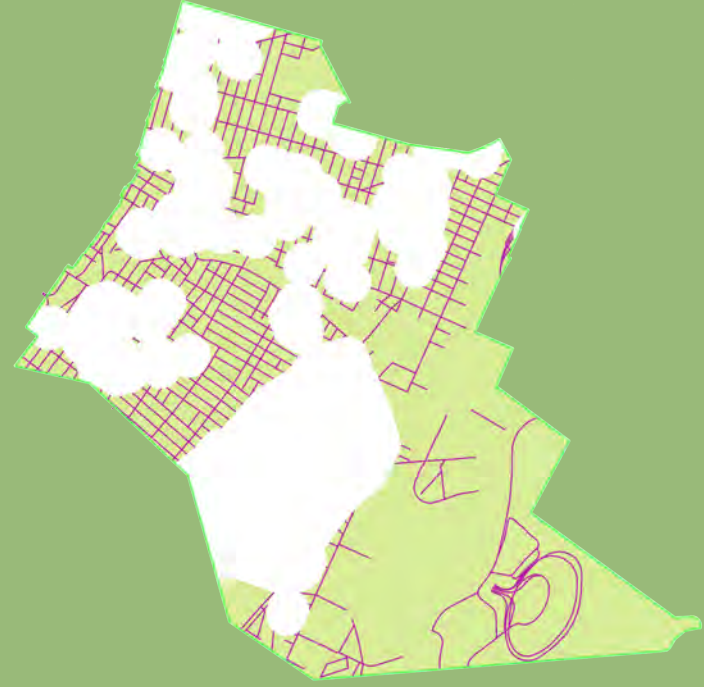
WEST WARD



NORTH WARD



CENTRAL WARD



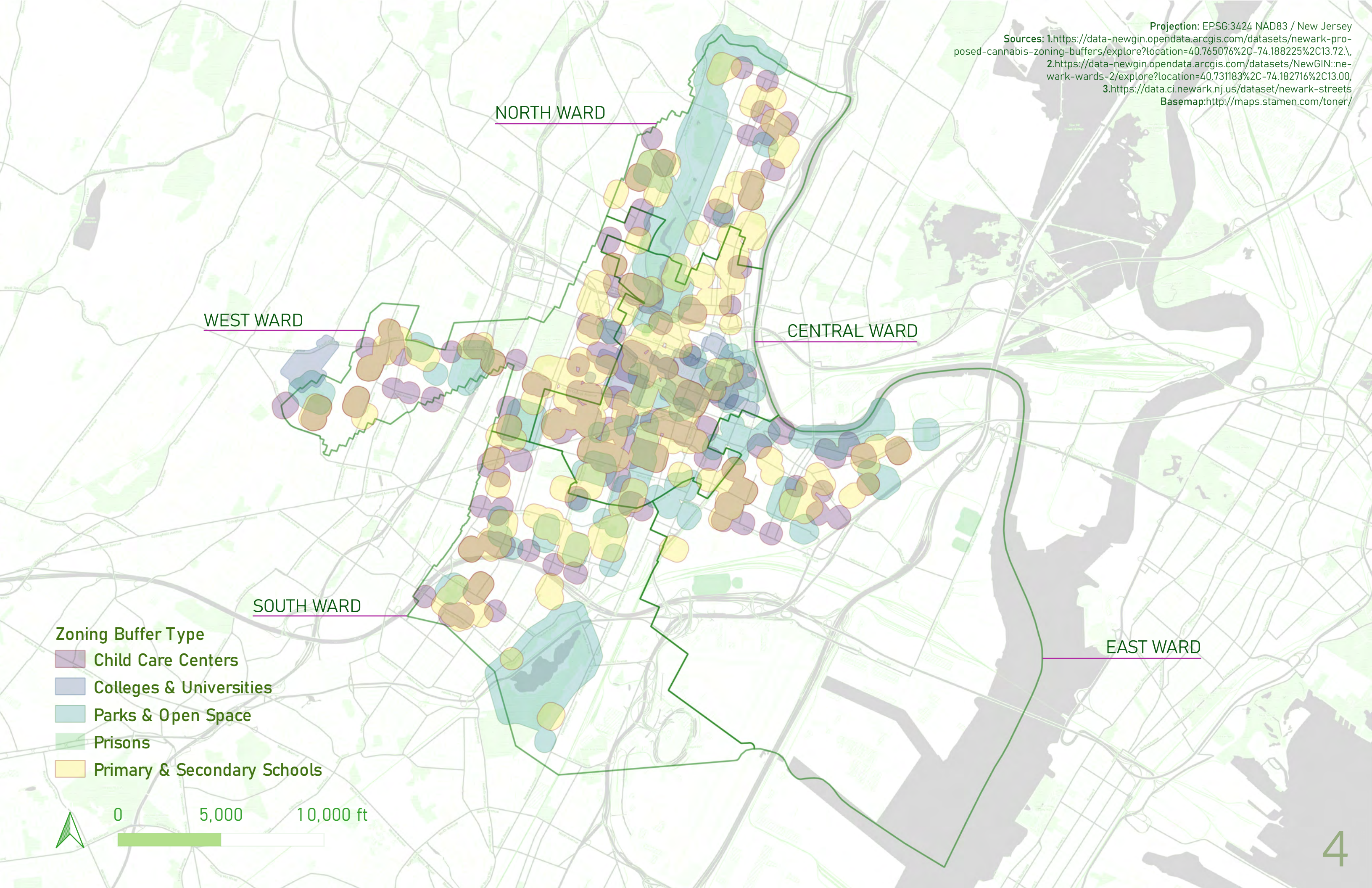
SOUTH WARD



EAST WARD

● Buffer Zones    — Streets Where Businesses May Operate





NORTH WARD

WEST WARD

CENTRAL WARD

SOUTH WARD

EAST WARD

- Zoning Buffer Type
- Child Care Centers
  - Colleges & Universities
  - Parks & Open Space
  - Prisons
  - Primary & Secondary Schools





# THE 1967 NEWARK COLLEGES EXPANSION PROJECT WHAT REMAINS?

This image shows a 1967 archival map overlaying 2022 satellite imagery of the portion of the city occupied by New Jersey Institute of Technology and Rutgers University - Newark. The map indicates property lines and buildings that were to be demolished for the expansion of the university campuses. The buildings that still remain are highlighted in blue, while the rest have been demolished. Today, these universities continue to expand well beyond the boundary delineated in the archival map.

What remains and why does has it been preserved?

Projection: WGS/Pseudo-Mercator EPSG:3857

Sources: <https://digital.npl.org/islandora/object/newarkmaps%3A2db8bfce-9711-42df-8146-b42570ffb9d3>





**LEGEND**

	RESIDENTIAL		
	COMMERCIAL		
	INDUSTRIAL		
	SEMI-PUBLIC		
	PUBLIC		
	VACANT LAND -		
	R = RESIDENTIAL		
	C = COMMERCIAL		
	P = PUBLIC		

BROKEN LINES INDICATE IMPROVEMENTS OTHER THAN BUILDINGS.

200 100 0 100 200  
GRAPHIC SCALE.

**RI05  
RI04  
RI21**

<b>EXISTING LAND USE</b>	
NEWARK COLLEGES EXPANSION PROJECT	4.1059
NEWARK - ESSEX COUNTY - NEW JERSEY	1:100
PLANNING AUTHORITY OF THE CITY OF	L.H.D.
<b>NEWARK</b>	<b>3</b>



# POSTED UP

This exercise focused on mapping people who I identified as being “posted up” along a path in Downtown Newark.

For data collection purposes, “posted up” was defined as individuals or groups who were stationed within a location or area for a particular reason. I further defined this group by whether or not there was indication that the person or individual would move from their “territory” after 15-20 minutes.

Based on people’s roles within their given “territory” and the temporality of their positioning, this map begins to question the volatility of different sites in Downtown Newark.







City Hall  
5:08 PM



Military Park  
4:50 PM



Washington Park  
4:20 PM


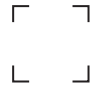







Essex County Courthouse  
4:01 PM

Dr. MLK Blvd.

Halsey St.  
Market St

If conflict were to occur within a particular person's "territory", how would they intervene and what would be the consequence of their intervention?

-  INDIVIDUAL       GROUP
-  POLICE OFFICER
-  SAFETY PARTOL / SECURITY GUARD
-  STREET CLEANER
-  BUSINESS OWNER / EMPLOYEE
-  COMMUNITY MEMBER

Thursday, Feb. 17th, 2022  
Newark, New Jersey  
4:01pm - 5:08pm



# BORDERS OF NEWARK

Thirteen cities share a border with the city of Newark.  
Some of these borders are heavily defined by...

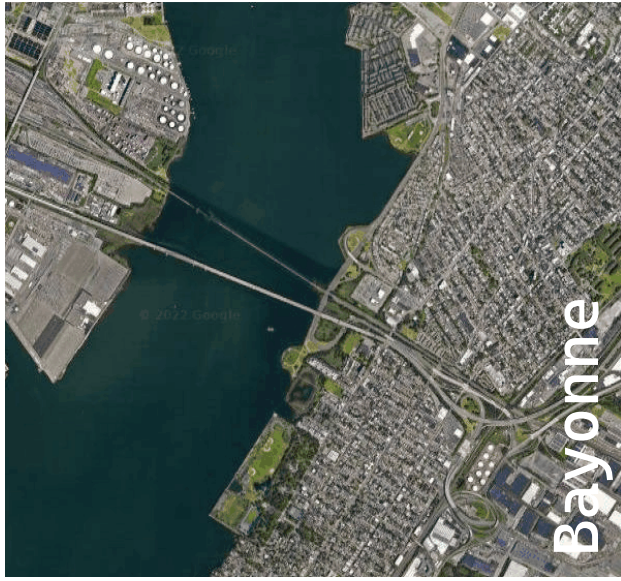
bodies of water

greenery

density

...while others offer a seamless transition.

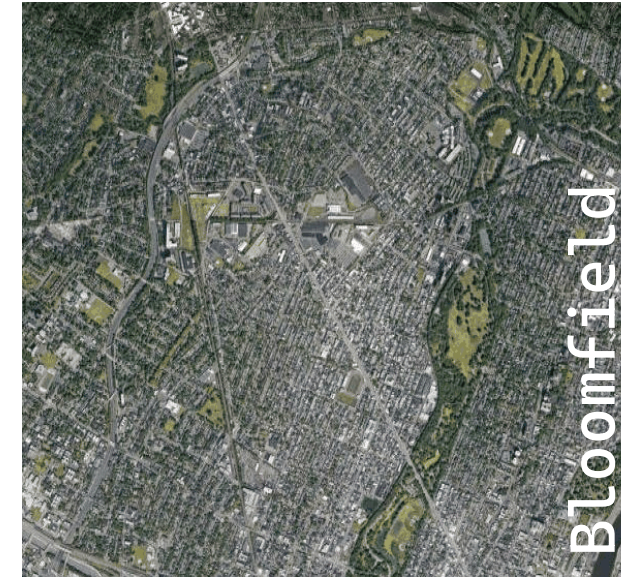




Bayonne



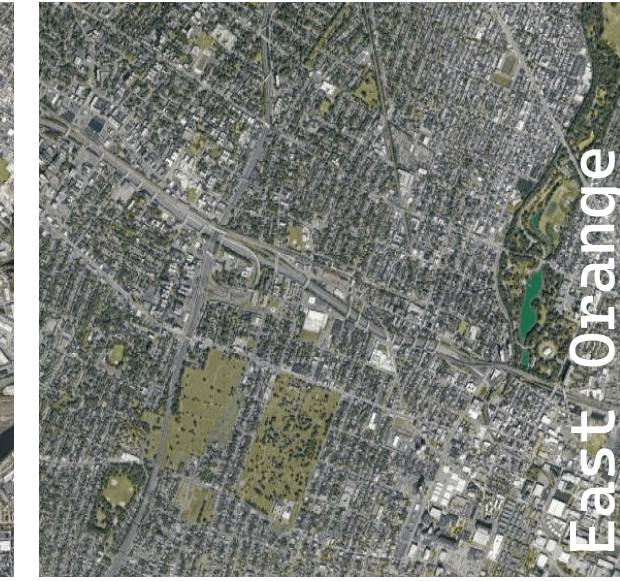
Belleville



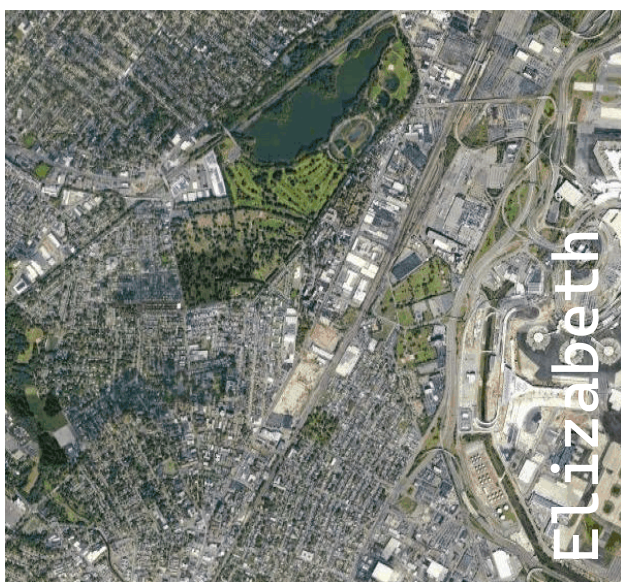
Bloomfield



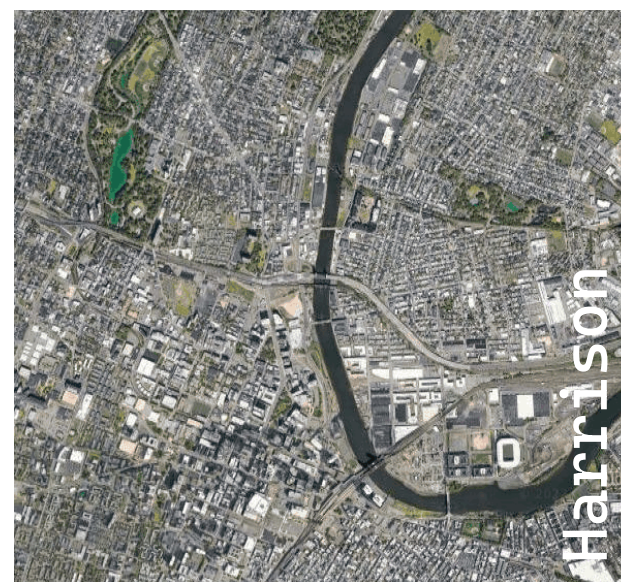
East Newark



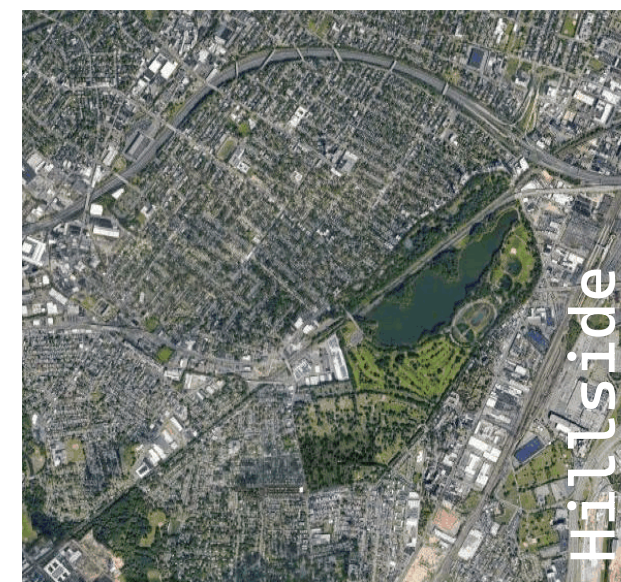
East Orange



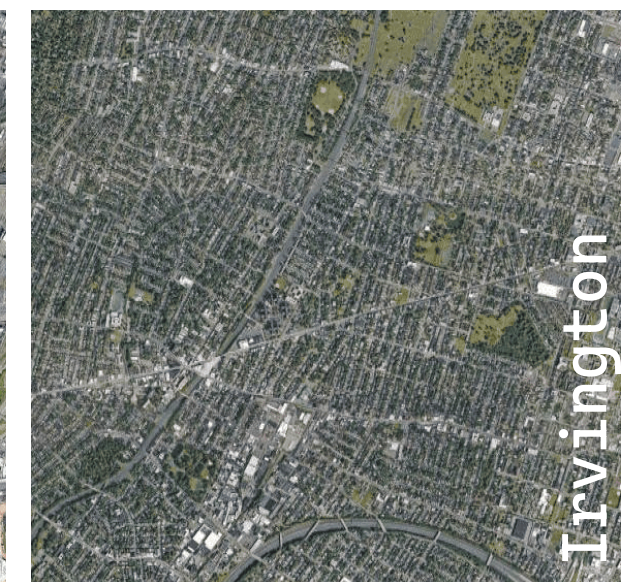
Elizabeth



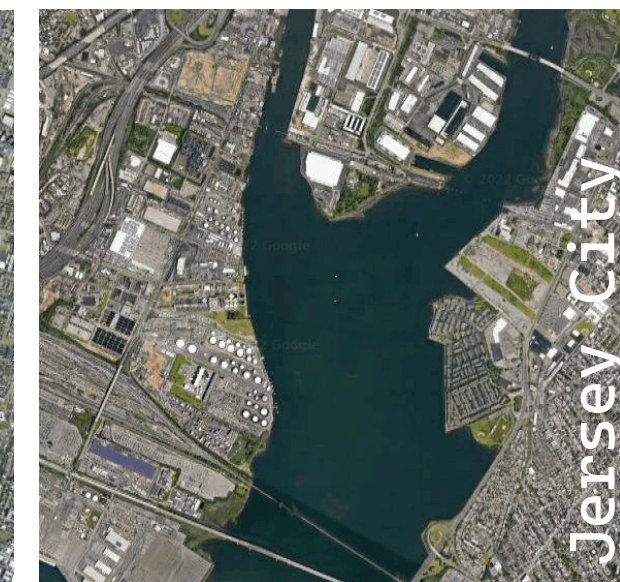
Harrison



Hillside



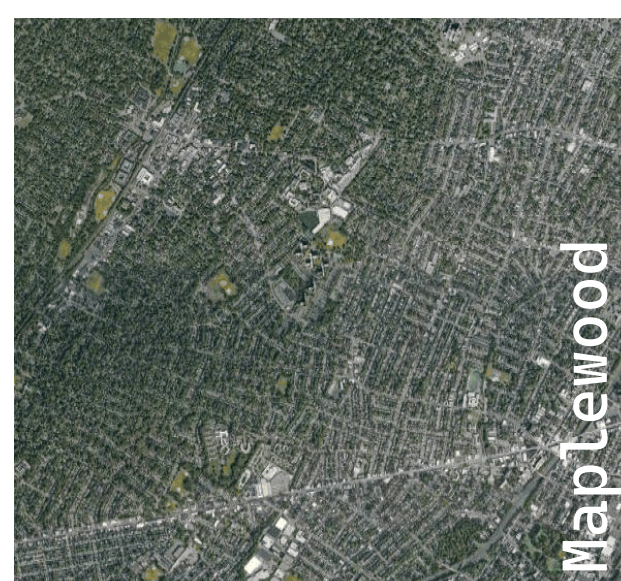
Irvington



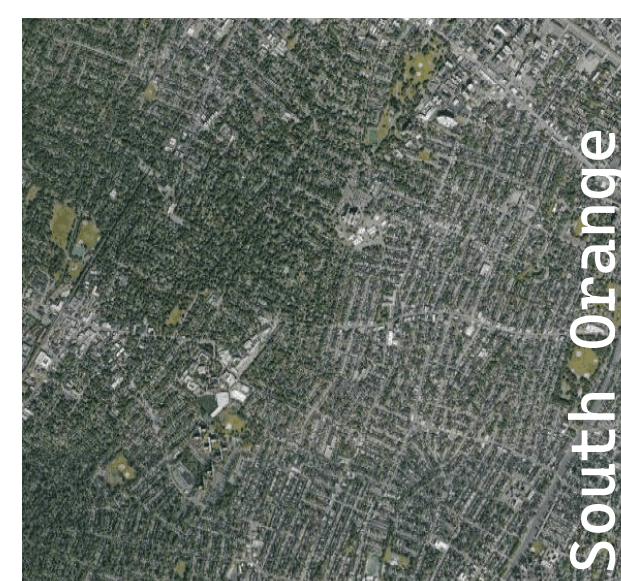
Jersey City



Kearny



Maplewood



South Orange

What do these borders look and feel like on the ground?