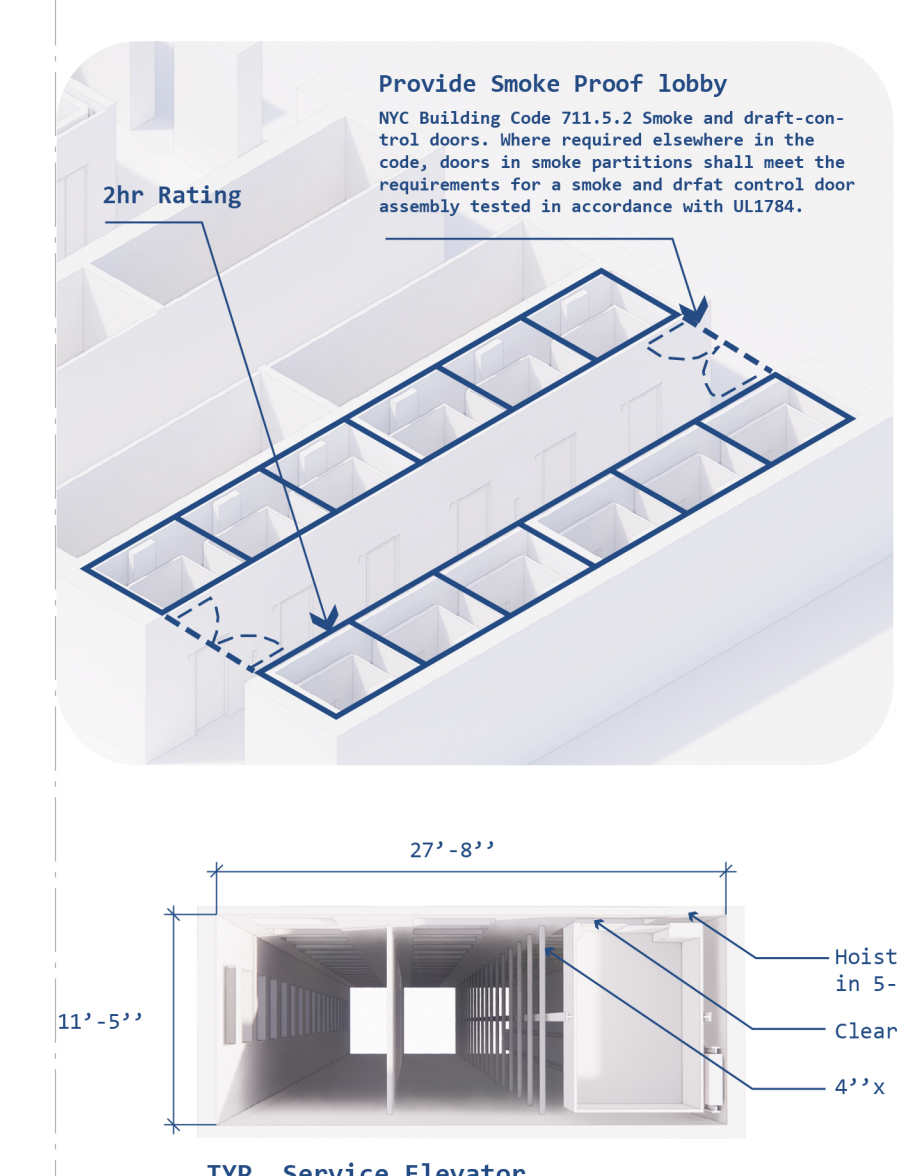
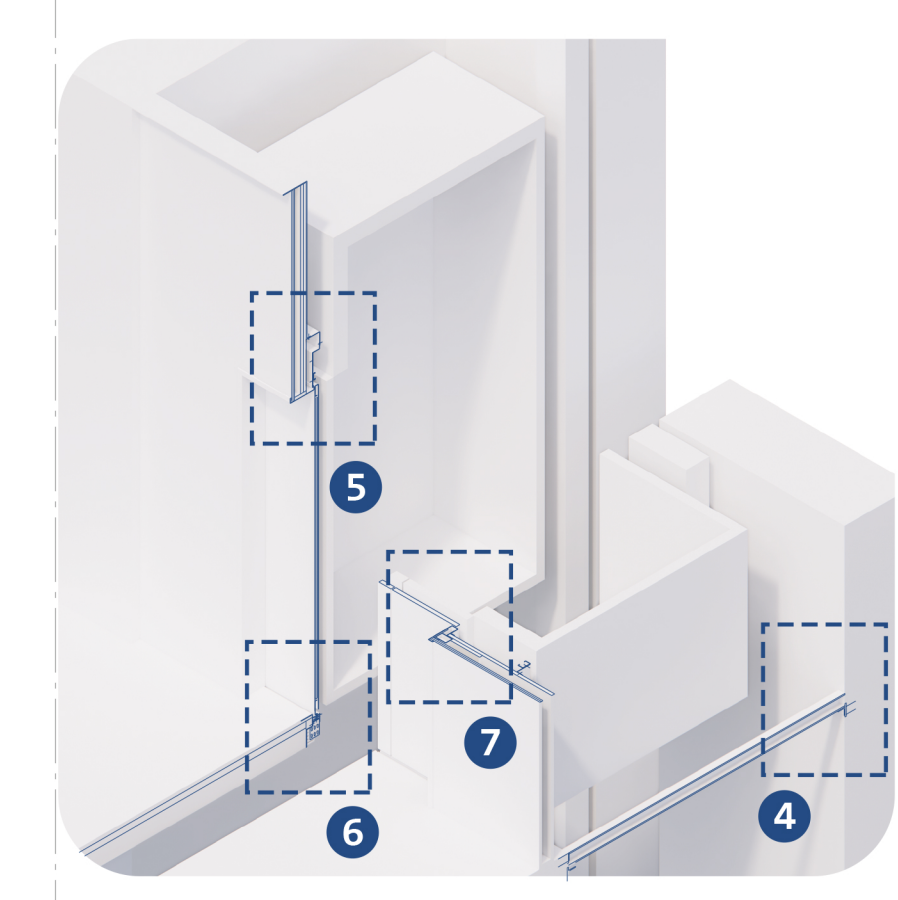
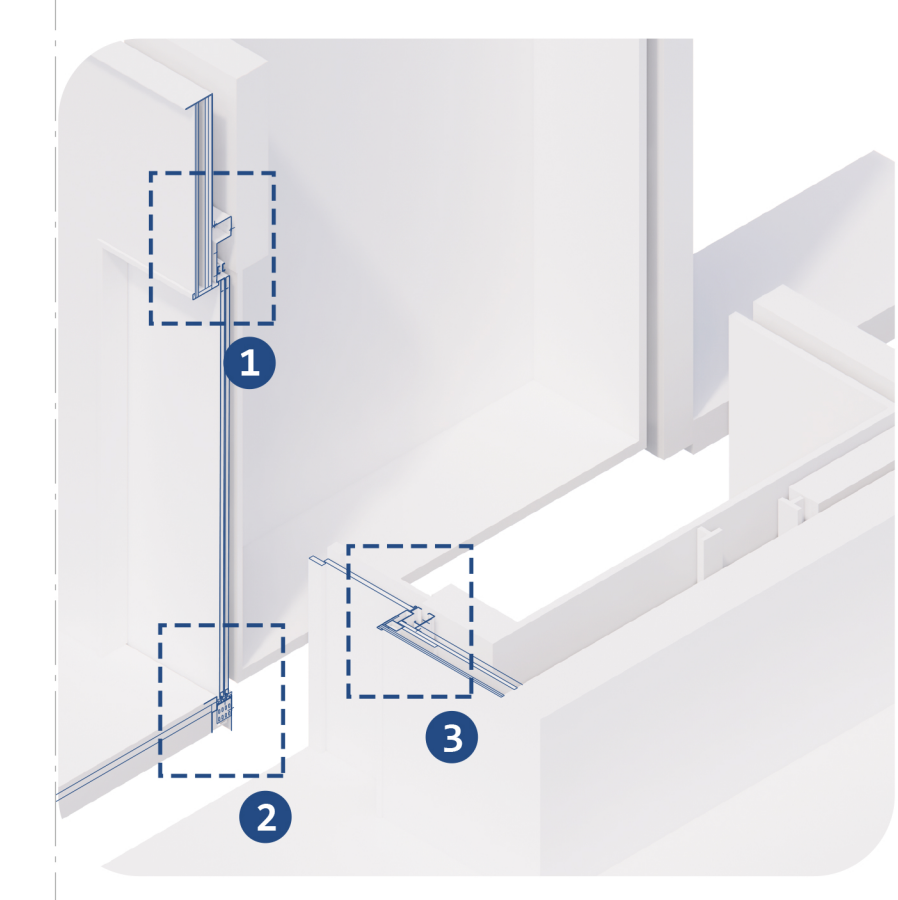
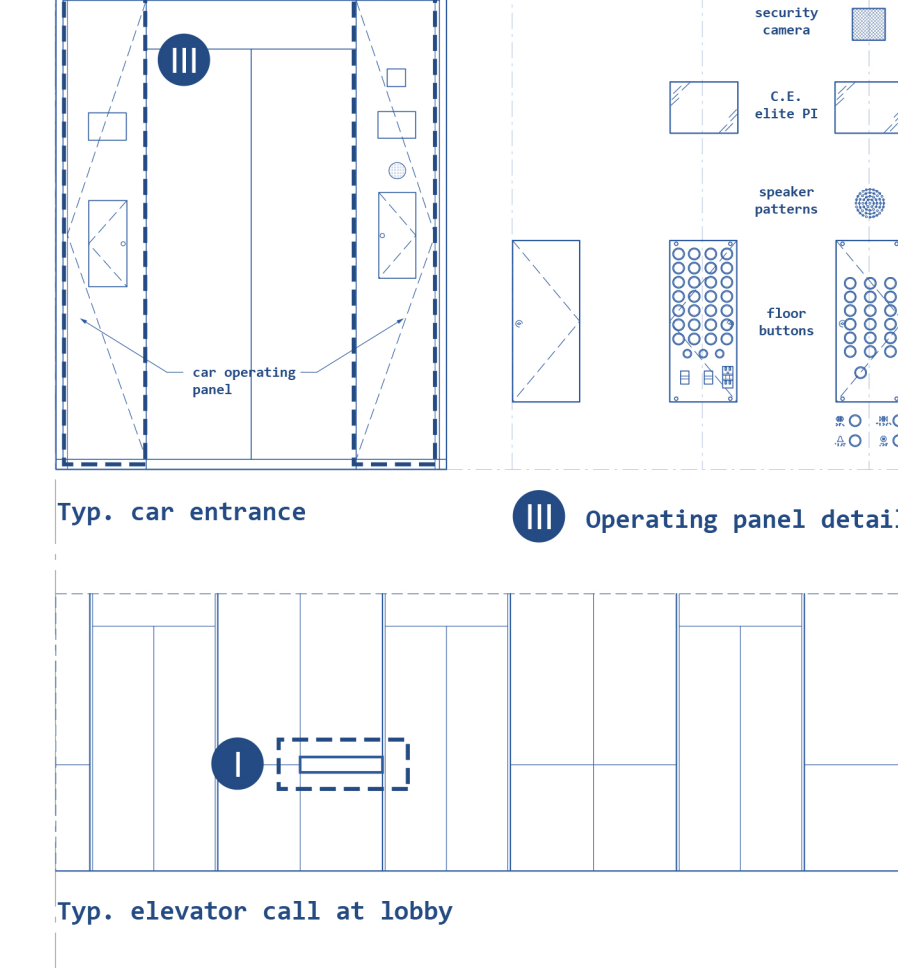
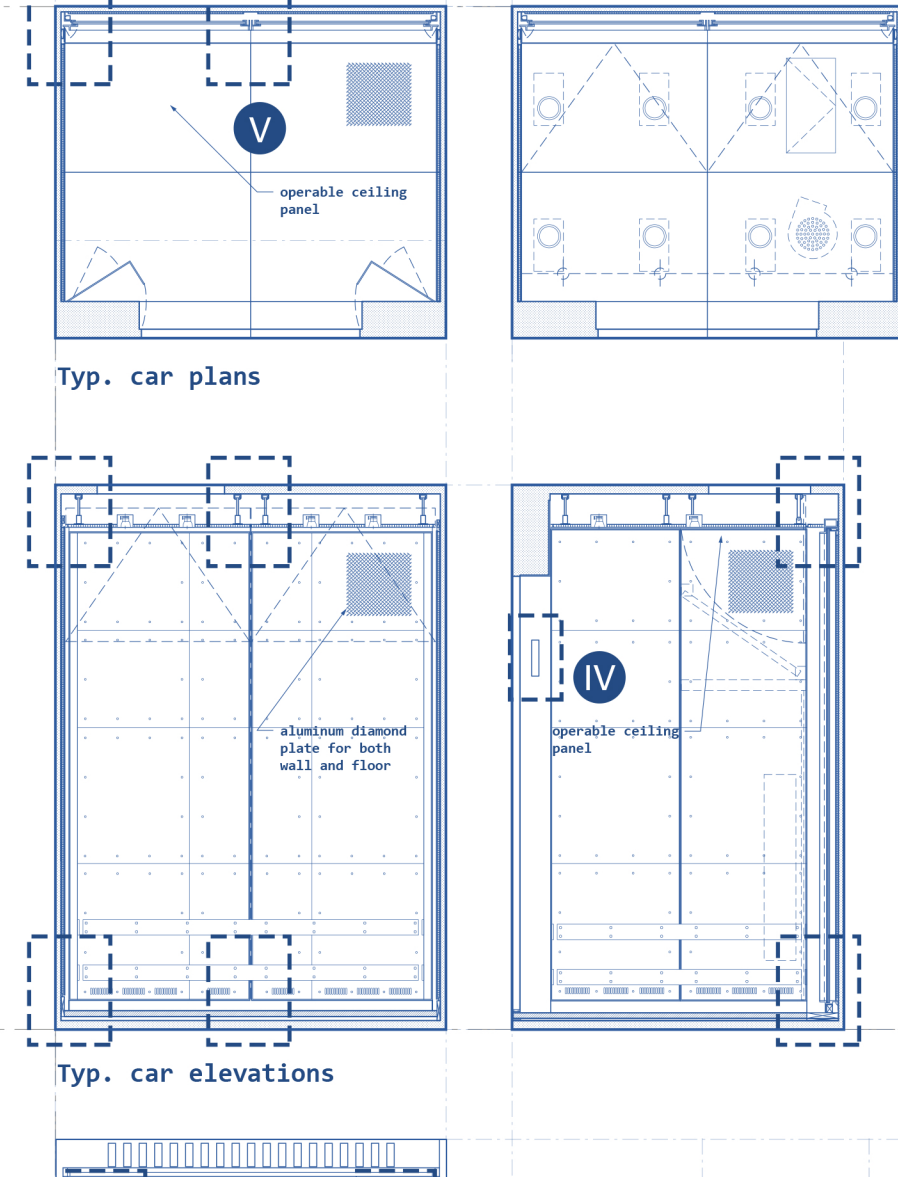
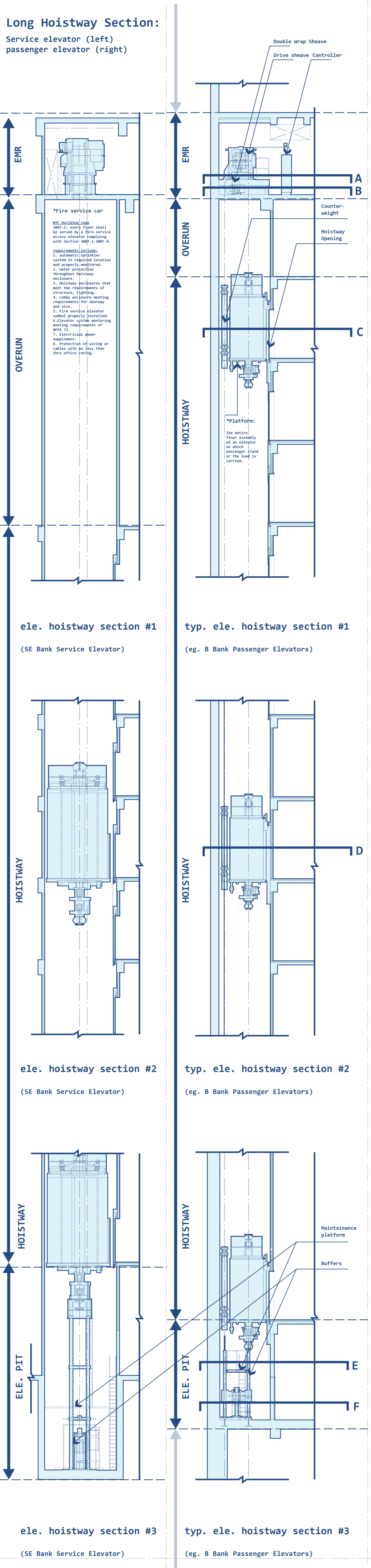
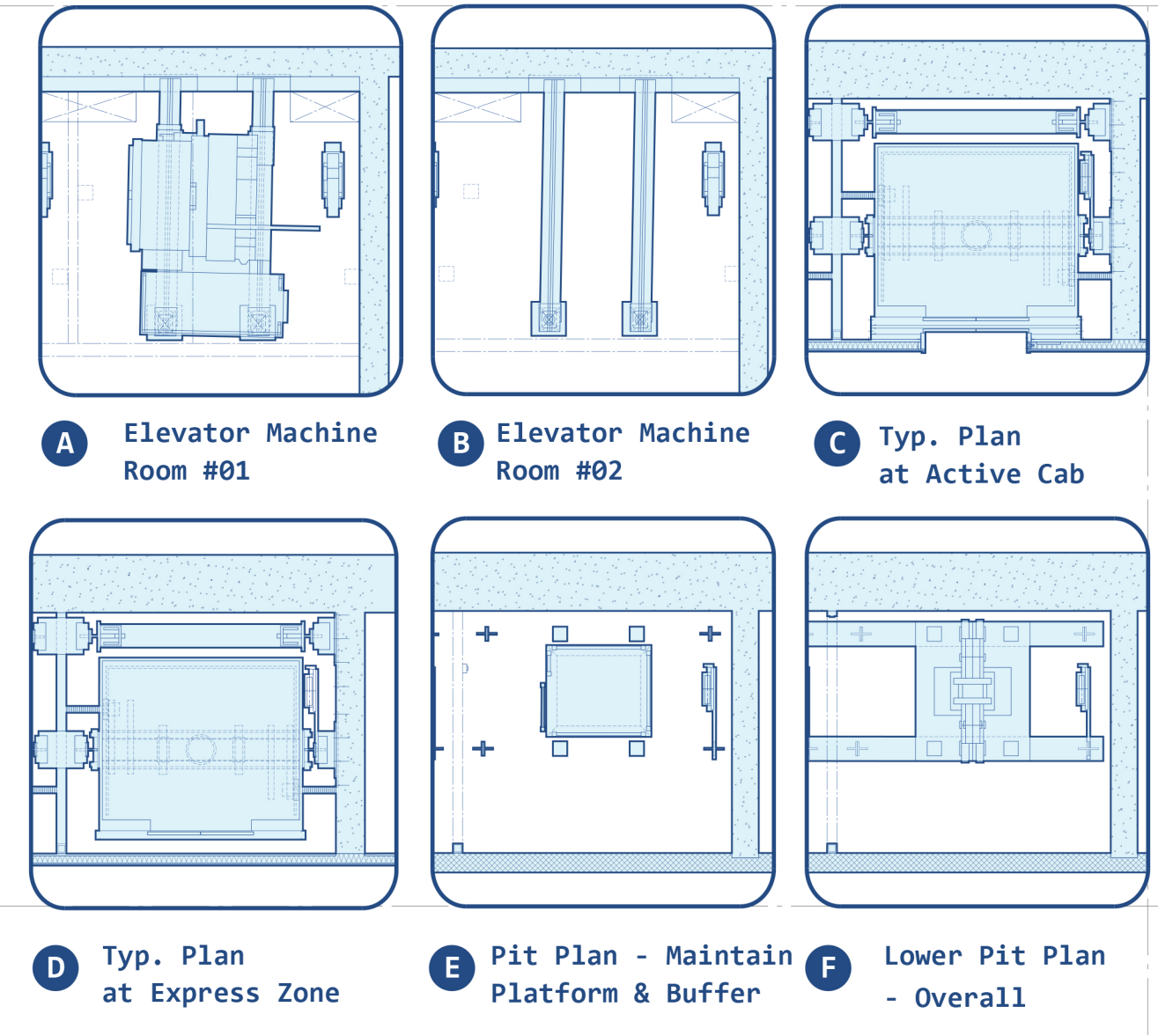


general core overview



<b>C Bank Passenger Elevators (C1-C6)</b>	Capacity: 3,500 Pounds Speed: 1,200 ft/min Floors Served: L,44-53 Stops/Opening: 13 Operation: Group Destination Dispatch
<b>D Bank Passenger Elevators (D1-D6)</b>	Capacity: 3,500 Pounds Speed: 1,000 ft/min Floors Served: L,53-61 Stops/Opening: 13 Operation: Group Destination Dispatch
<b>E Bank Passenger Elevators (E1-E6)</b> <b>F Bank Passenger Elevators (F1-F6)</b>	Capacity: 3,500 Pounds Speed: 1,500 ft/min Floors Served: L,24-34 (E); L,34-44 (F) Stops/Opening: 12 Operation: Group Destination Dispatch
<b>Service Elevators (SE1-SE3)</b>	Capacity: 6,000 Pounds Speed: 1,000 ft/min Floors Served: ALL Stops/Opening: 72 Operation: Group Automatic / Keypad
<b>A Bank Passenger Elevators (A1-A6)</b>	Capacity: 3,500 Pounds Speed: 500 ft/min Floors Served: L,3-14 Stops/Opening: 13 Operation: Group Destination Dispatch
<b>B Bank Passenger Elevators (B1-B6)</b>	Capacity: 3,500 Pounds Speed: 1000 ft/min Floors Served: L,14-24 Stops/Opening: 13 Operation: Group Destination Dispatch

