



Enzymes

- 1
- 2
- 3
- 4
- 5

1)

2)

3)

4)

5)



1)





Enzyme Activity...

1 2 3 4 5

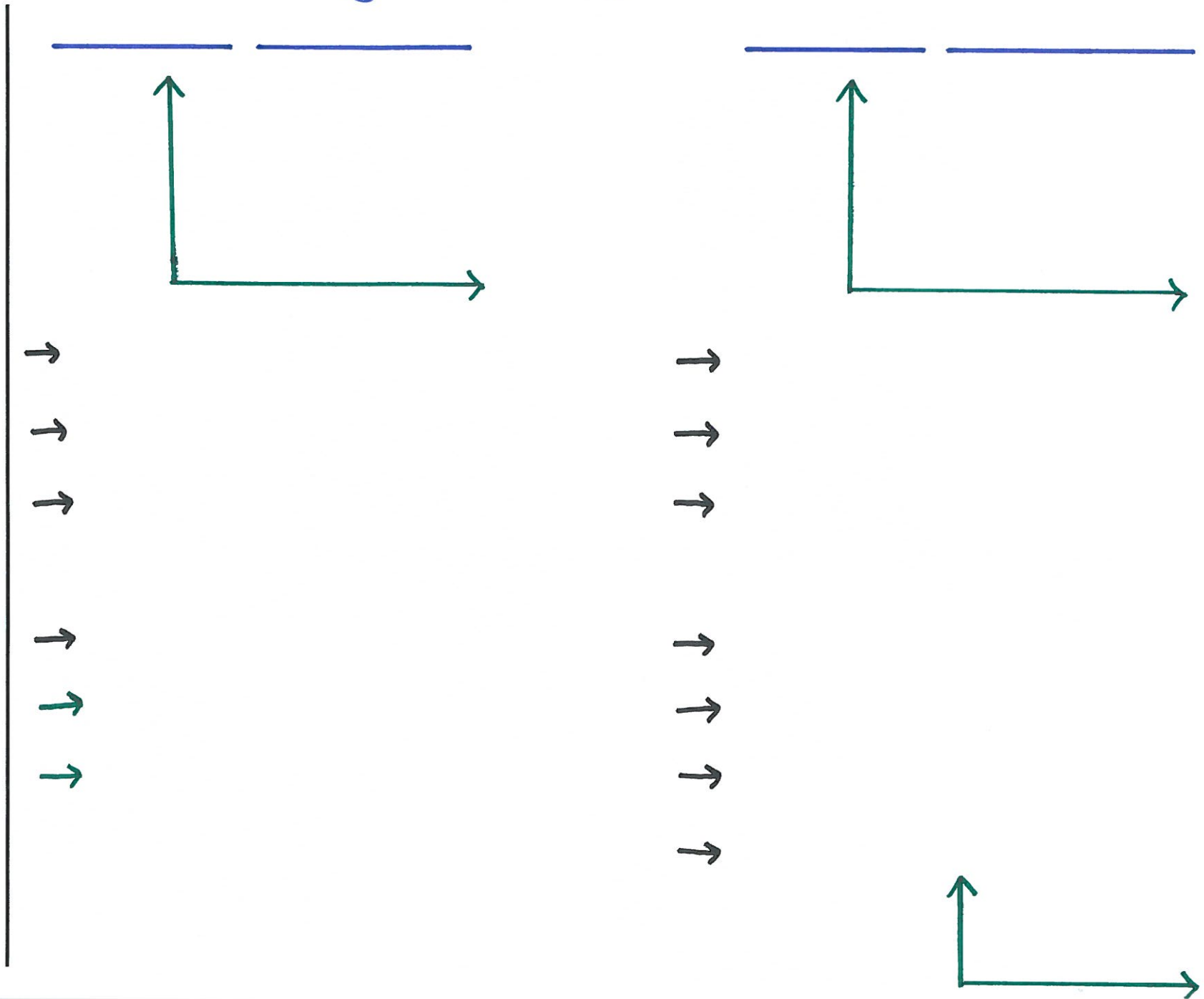
2) _____ (_____)





Enzyme Activity...

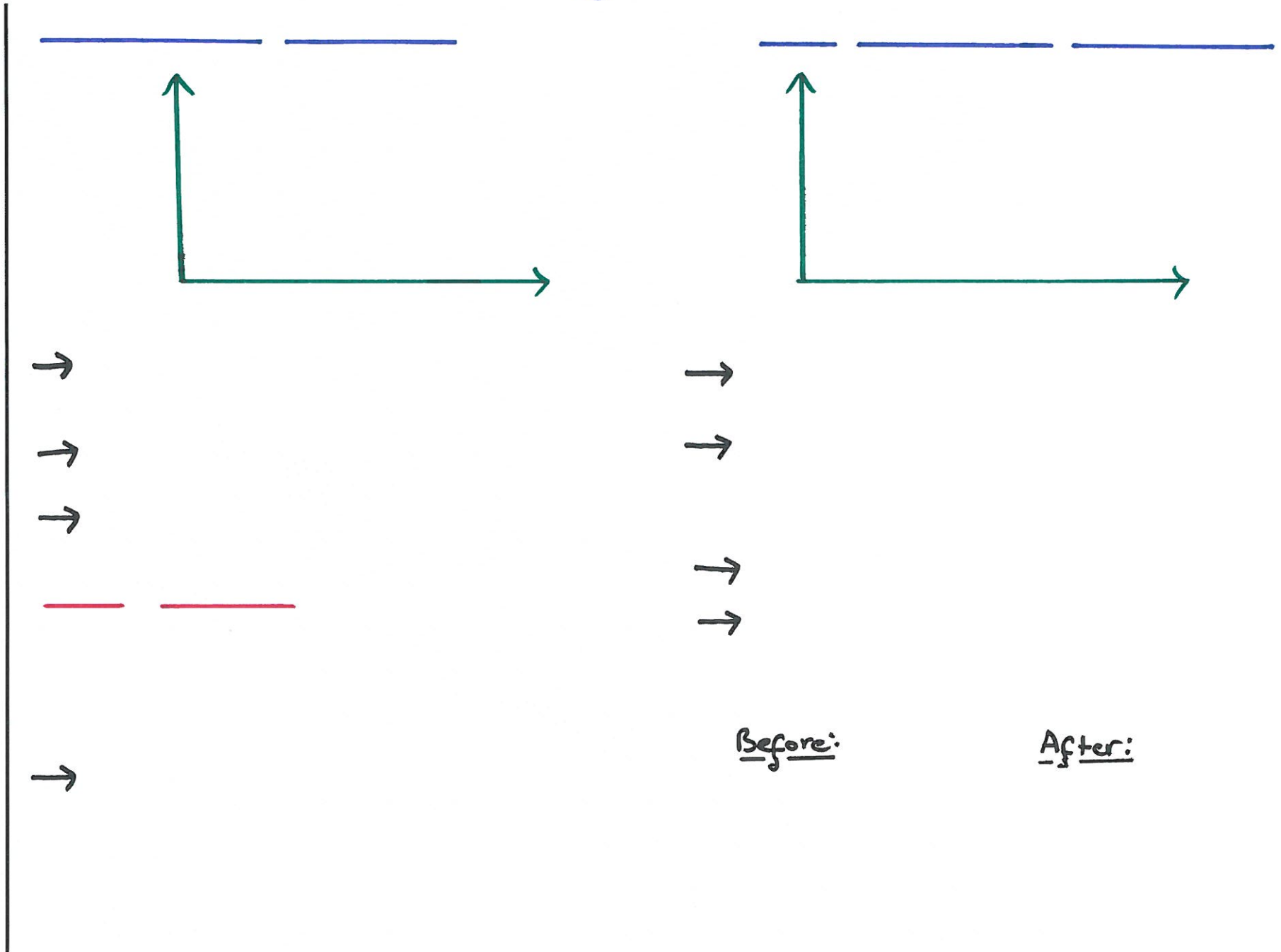
1 2 3 4 5





Enzyme Activity...

1 2 3 4 5





Intracellular & Extracellular Enzymes

Intracellular

Intracellular Enzymes

e.g.



Extracellular

Extracellular Enzymes



e.g.



e.g.



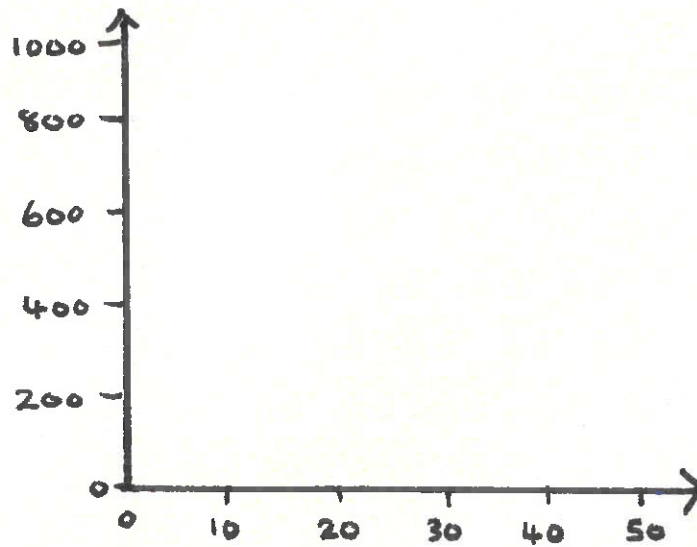


Temperature
Coefficient

The Temperature Coefficient Q_{10}

- 1
- 2
- 3
- 4
- 5

= _____



Rate of Reaction



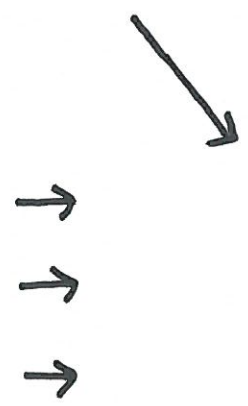
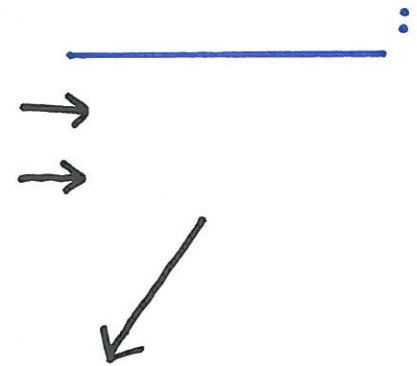


The Enzyme Question

The Protein Shape Question (/)

-
-
-
-

Non Functional Protein:





Coenzymes, Cofactors & Prosthetic Groups

1

2

3

4

5

Coenzymes

-
-
-
-
-
-

Cofactors

-
- e.g.
-
-
-

Prosthetic Groups

-
-
-
- e.g.

Enzyme Inhibition

-



Enzyme Inhibitors

Allosteric Site

Reversible Inhibitors

-
-
-
-
- ↔

Using Inhibitors

Metabolic Poisons:

-
-

Medicines

-
- e.g.

_____ :

Non-Reversible Inhibitors

-
-
-
- e.g.

Product Inhibition

-
-
- ↔
-