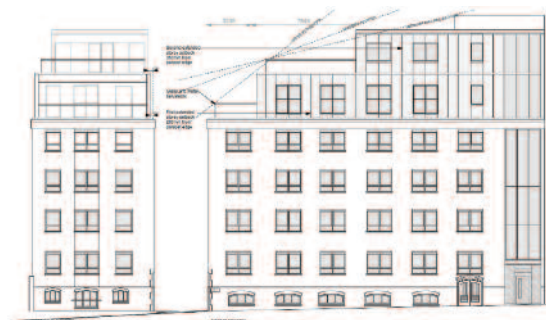
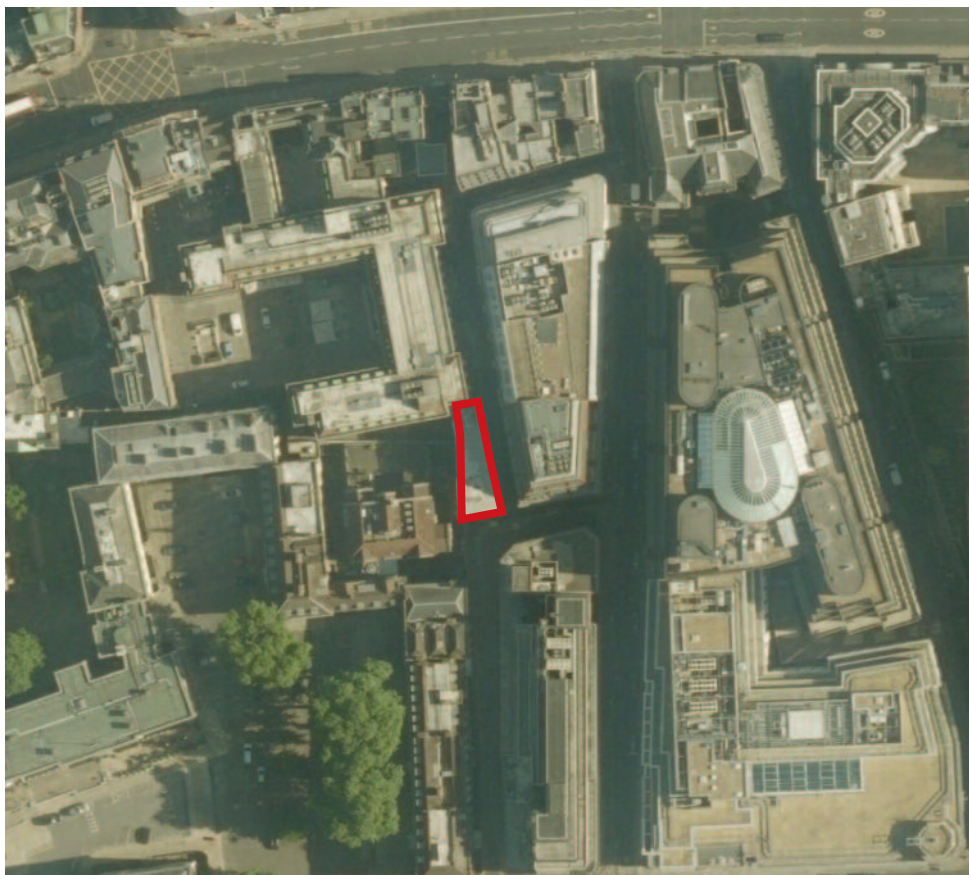


LOT
56

Roof Space, 4-7 Lombard Lane Temple, London EC4Y 8AD



Proposed Elevation



Proposed Floor Plan

A rooftop development opportunity, located in a popular and much sought after area of central London, with planning for two flats. **Vacant.**

Tenure

Leasehold. 999 years from 1st January 2000.

Location

- Situated to the south of Fleet Street
- Within easy reach of many iconic central London areas such as Covent Garden and St Paul's Cathedral
- A variety of popular and fashionable cafés, bars and restaurants can be found in the surrounding area
- Picturesque walks along the River Thames can be found just to the south

🚇 Temple (Circle and District Lines), Chancery Lane (Central Line)

🚆 City (Thameslink)

Description

- A roof covering and the airspace above
- Planning permission for construction of two flats across an additional two floors
- Plans for the fifth floor show a two bedroom flat of approximately 108 sq m with a terrace of 25 sq m
- Plans for the sixth floor show a one bedroom flat of approximately 56 sq m with a terrace of 46 sq m

Planning

Planning (ref 17/00292/FULL) was granted by City of London on 25th May 2017 for "Erection of a one and two storey roof extension to form two residential units (Use Class C3) (161 sq m GIA)."

Viewing

Please refer to our website [savills.co.uk/auctions](https://www.savills.co.uk/auctions)